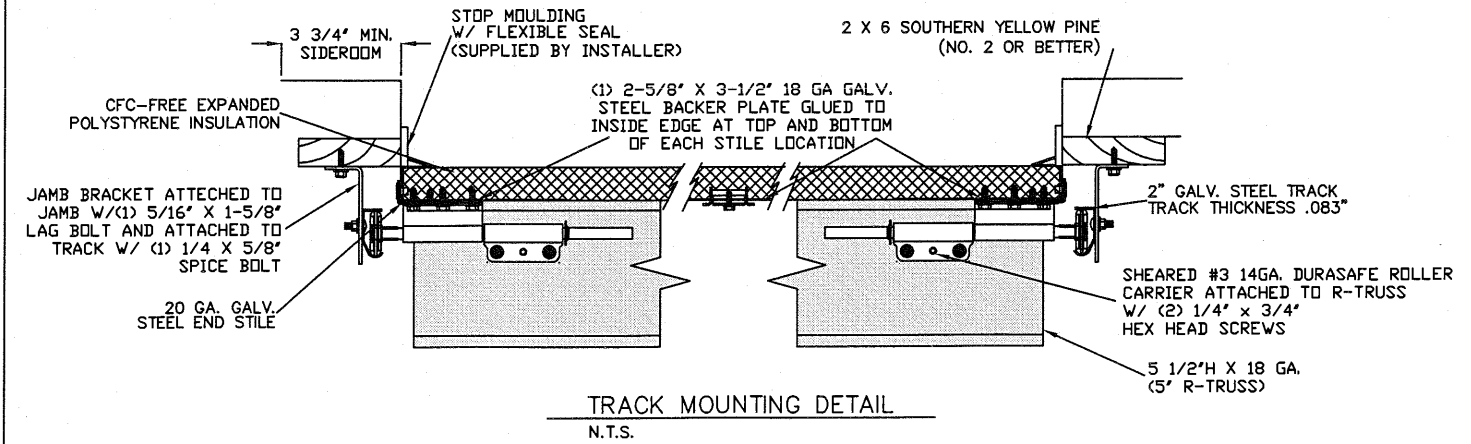
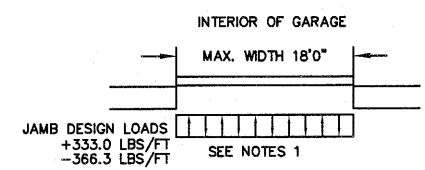


LARGE MISSILE IMPACT RESISTANT



- SPECIFICATIONS AND NOTES
- DOORS AND HARDWARE WILL BE DESIGNED, MANUFACTURED AND INSTALLED WITH STANDARDS AS SET FORTH BY DASMA. EACH VERTICAL JAMBS RECEIVES MAXIMUM DESIGN LOADS OF: +333.0 LBS/FT & -366.3 LBS/FT
  - DOOR SECTIONS SHALL BE 24 GA. MIN. (.0216") ROLLED FORMED LIGHT COMMERCIAL QUALITY
  - SUPPORTING STRUCTURAL ELEMENTS SHALL BE DESIGNED BY A REGISTERED PROFESSIONAL ENGINEER FOR WIND LOADS INDICATED ON THIS DRAWING IN ADDITION TO OTHER LOADINGS.

THE METHOD OF TESTING WAS IN SUBSTANTIAL CONFORMANCE WITH THE PROCEDURE DESCRIBED IN ASTM E330, E1886, E1996, & F588, ANSI/DASMA 108 & 115. THE PRESSURES SHOWN ON THE DRAWINGS WERE CALCULATED USING ASCE 7-98/02/05 WITH THE FOLLOWING PARAMETERS (5 FEET OF DOOR WIDTH IN THE END ZONE, ROOF AT ANY SLOPE, AND I=1.0):

WIND SPEED (MPH)	155	140	133	127	122
EXPOSURE LEVEL	B	C	C	D	D
MEAN ROOF HEIGHT	30'	15'	25'	15'	25'

REV	DESCRIPTION OF REVISIONS	DATE	BY

MAX SIZE 18' WIDTH 14' HEIGHT (DOOR HEIGHT SUBJECT TO WEIGHT LIMITATIONS)

DESIGN LOADS +37.0 PSF -40.7 PSF

TEST LOADS (1.5 x DESIGN LOADS) +55.5 PSF -61.1 PSF

LARGE MISSILE IMPACT RESISTANCE

Thomas L. Shelmerdine, PE (TX PE #85829) Structural Solutions, PA (TX Firm #F-004063)

STATE OF TEXAS  
THOMAS L. SHELMERDINE  
85829  
LICENSED PROFESSIONAL ENGINEER

TX

**Amarr**  
ENTREMATICS  
165 CARRIAGE COURT WINSTON-SALEM, N.C. 27105

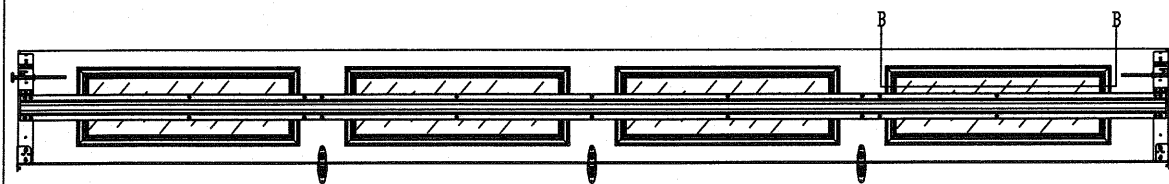
MODEL #1200 HERITAGE 3000  
MODEL #1200 OAK SUMMIT 3000  
SHORT, LONG, FLUSH & OAK SUMMIT PANELS

SIZE	DRAWN BY	RLR	DATE	06/12/14	DRAWING NUMBER
B	CHECKED BY		DATE		IRC-1218-155-26-1

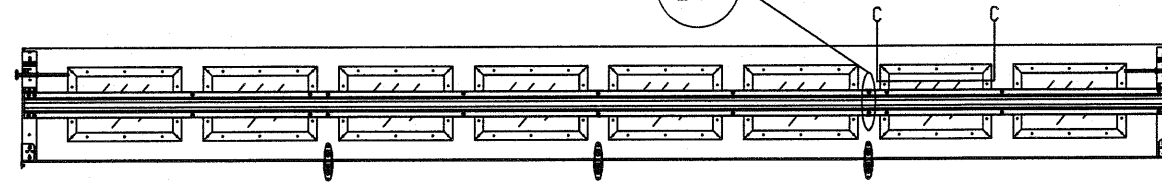
SHEET 1 OF 3

5921-G W. Friendly Ave., Greensboro, NC 27410

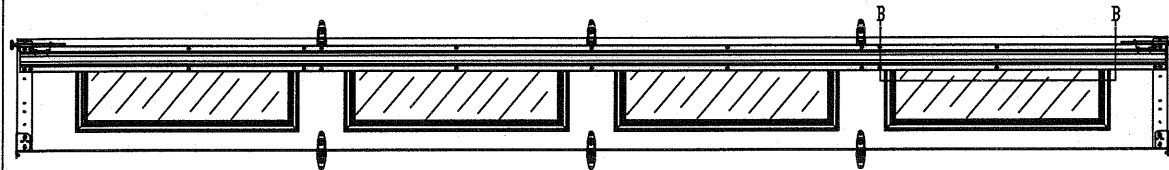
OPTIONAL SHORT AND LONG PANEL GLAZING LAYOUTS



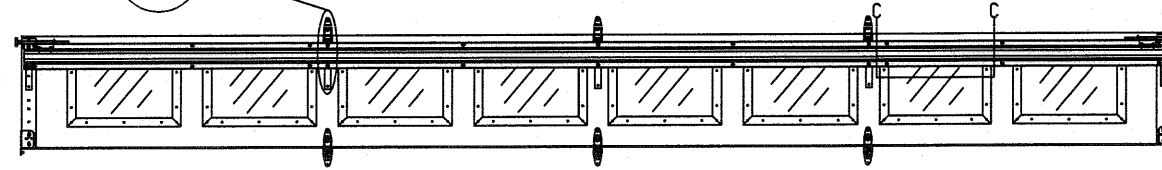
TOP SECTION



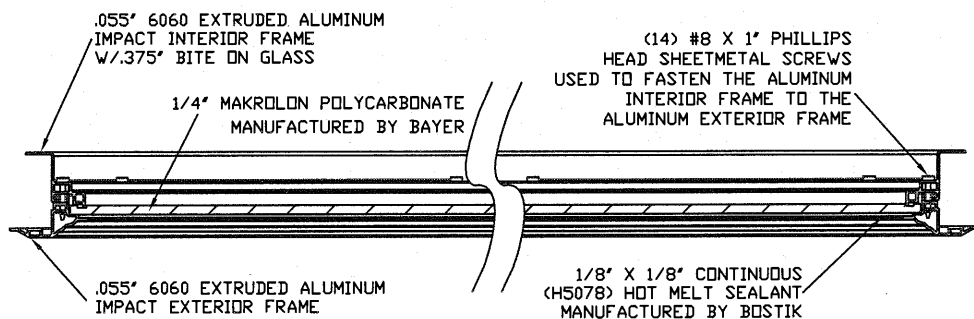
TOP SECTION



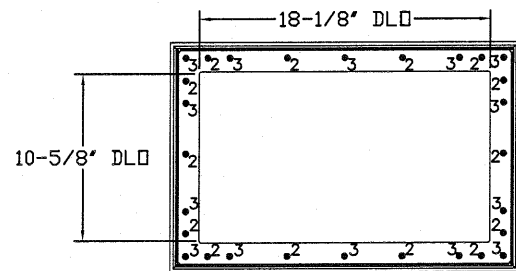
INTERMEDIATE SECTION



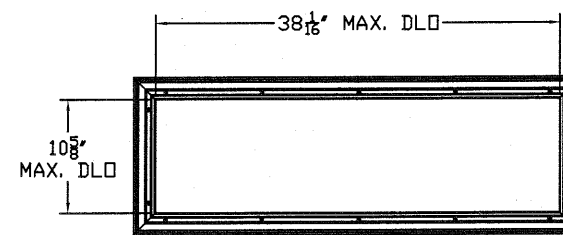
INTERMEDIATE SECTION



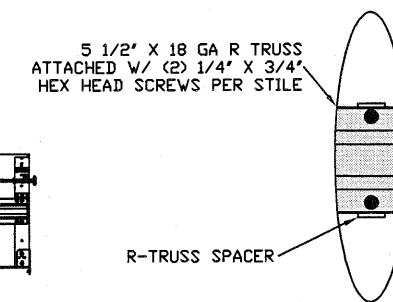
SECTION B-B IMPACT WINDOW DETAIL  
N.T.S.



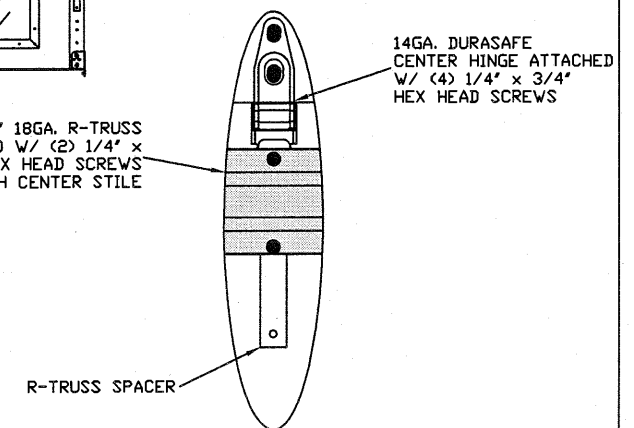
IMPACT GLAZING FASTENER DETAIL  
N.T.S.  
GLAZING MEETS ASTM E1300-04



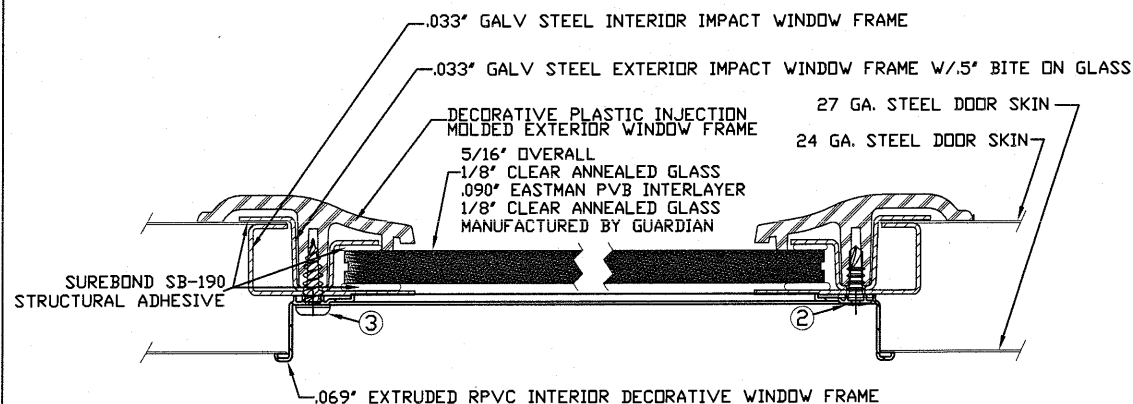
LONG PANEL IMPACT GLAZING FASTENER DETAIL  
N.T.S.



R-TRUSS SPACER  
N.T.S. 5A



R-TRUSS SPACER  
N.T.S. 5B

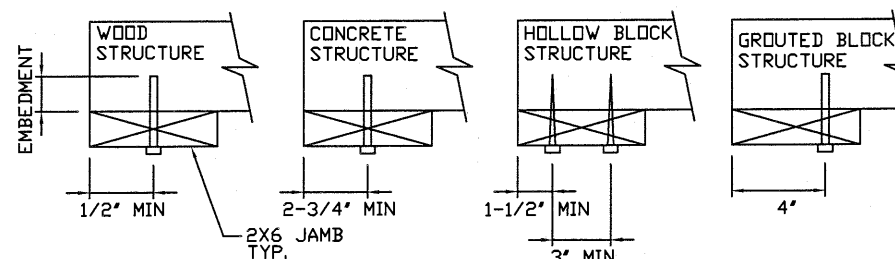


SECTION C-C IMPACT WINDOW DETAIL  
N.T.S.

WOOD JAMB ATTACHMENT TO STRUCTURE

**2 X 6 VERTICAL JAMB ATTACHMENT TO WOOD FRAME STRUCTURE**  
 5/16" X 3" LAG SCREWS STARTING 6" FROM ENDS THEN 14" O.C. (1 1/2" EMBEDMENT)  
**2 X 6 VERTICAL JAMB ATTACHMENT TO 2,000 PSI CONCRETE**  
 HILTI KWIK BOLT 3/8" X 4" STARTING 6" FROM ENDS THEN 24" O.C. (2 1/2" EMBEDMENT)  
 HILTI SLEEVE ANCHOR 3/8" X 2-3/4" STARTING 6" FROM ENDS THEN 12" O.C. (1 1/4" EMBEDMENT)  
 ITW/RAMSET REDHEAD (TRU-BOLT) 3/8" X 4" STARTING 6" FROM ENDS THEN 24" O.C. (2 1/2" EMBEDMENT)  
**2 X 6 VERTICAL JAMB ATTACHMENT TO HOLLOW C-90 BLOCK**  
 SIMPSON 1/4" X 3" TITEN SCREWS STARTING 6" FROM ENDS, USE PAIRS OF FASTENERS (3" APART) AT 8" O.C. (1 1/2" EMBEDMENT)  
 HILTI 1/4" X 2-3/4" KWIK-CON II+ SCREWS STARTING 6" FROM ENDS, USE PAIRS OF FASTENERS (3" APART) AT 8" O.C. (1 1/4" EMBEDMENT)  
**2 X 6 VERTICAL JAMB ATTACHMENT TO GROUTED C-90 BLOCK (2000 PSI GROUT)**  
 HILTI SLEEVE ANCHOR 3/8" X 2-3/4" STARTING 6" FROM ENDS THEN 14" O.C. (1 1/4" EMBEDMENT) (OR, USE FASTENERS FOR HOLLOW C-90 BLOCK)

\*LAGS AND BOLTS CAN BE COUNTERSUNK TO PROVIDE A FLUSH MOUNTING SURFACE.  
 \*PREPARATION OF WOOD JAMBS BY OTHERS



REV	DESCRIPTION OF REVISIONS	DATE	BY

MAX SIZE  
 18' WIDTH  
 14' HEIGHT  
 (DOOR HEIGHT SUBJECT TO WEIGHT LIMITATIONS)

DESIGN LOADS  
 +37.0 PSF  
 -40.7 PSF

TEST LOADS  
 (1.5 x DESIGN LOADS)  
 +55.5 PSF  
 -61.1 PSF

LARGE MISSILE IMPACT RESISTANCE

Thomas L. Shelmerdine, PE (TX PE #85829)  
 Structural Solutions, PA (TX Firm #004063)

STATE OF TEXAS  
 THOMAS L. SHELMERDINE  
 85829  
 LICENSED PROFESSIONAL ENGINEER  
 TX

**Amarr**  
 ENTREMATICS  
 165 CARRIAGE COURT WINSTON-SALEM, N.C. 27105

MODEL #1200 HERITAGE 3000  
 MODEL #1200 OAK SUMMIT 3000  
 SHORT, LONG, FLUSH & OAK SUMMIT PANELS

SIZE	DRAWN BY	RLR	DATE	06/12/14	DRAWING NUMBER
B	CHECKED BY		DATE		IRC-1218-155-26-1

SHEET 2 OF 3

TABLE 1

DOOR HEIGHT	SECTION HEIGHTS							
	Btm	#2	#3	#4	#5	#6	#7	#8
14' 0"	21"	21"	21"	21"	21"	21"	21"	21"
13' 6"	21"	21"	21"	21"	21"	18"	18"	21"
13' 0"	21"	21"	21"	18"	18"	18"	18"	21"
12' 6"	21"	18"	18"	18"	18"	18"	18"	21"
12' 0"	21"	21"	21"	21"	21"	18"	21"	
11' 6"	21"	21"	21"	18"	18"	18"	21"	
11' 0"	21"	18"	18"	18"	18"	18"	21"	
10' 6"	21"	21"	21"	21"	21"	21"		
10' 0"	21"	21"	21"	18"	18"	21"		
9' 6"	21"	18"	18"	18"	18"	21"		
9' 0"	18"	18"	18"	18"	18"	18"		
8' 6"	21"	21"	21"	18"	21"			
8' 0"	21"	18"	18"	18"	21"			
7' 6"	18"	18"	18"	18"	18"			
7' 0"	21"	21"	21"	21"				
6' 6"	21"	18"	18"	21"				

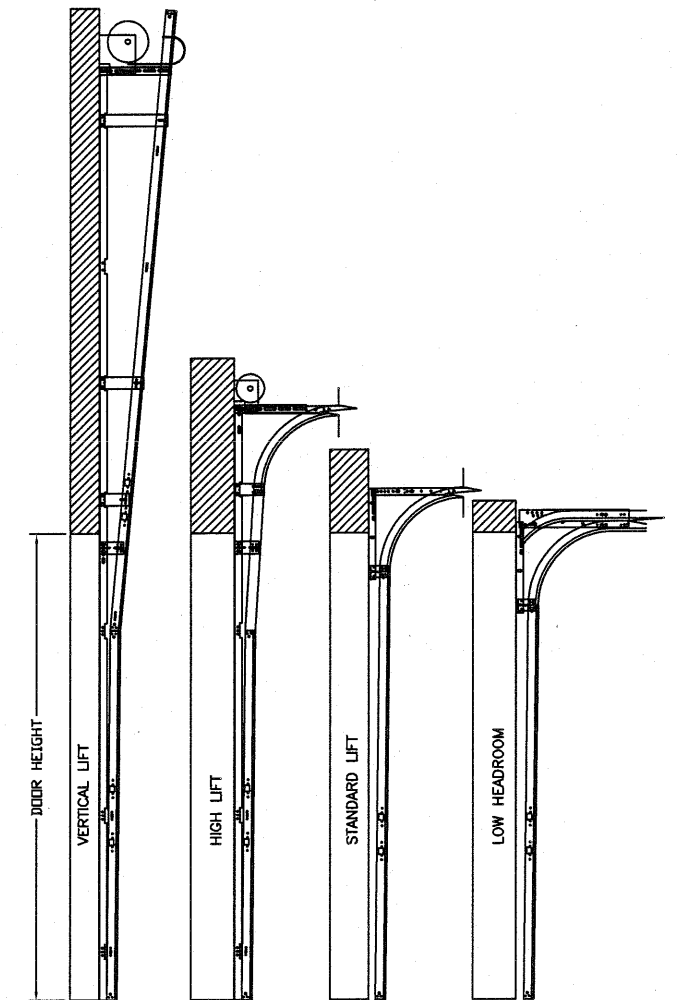
TABLE 2

DOOR HEIGHT	TRACK ATTACHMENT														SPLICE	
	A	B	C	D	E	F	G	H	I	J	K	L	M	N		S
6' 6"	3.5"	10"	22"	34"	46"	58"										70"
7'	3.5"	10"	22"	34"	46"	58"	70"									76"
7' 6"	3.5"	10"	22"	34"	46"	58"	70"									82"
8'	3.5"	10"	22"	34"	46"	58"	70"	82"								94"
8' 6"	3.5"	10"	22"	34"	46"	58"	70"	82"								94"
9'	3.5"	10"	22"	34"	46"	58"	70"	82"	94"							106"
9' 6"	3.5"	10"	22"	34"	46"	58"	70"	82"	94"							106"
10'	3.5"	10"	22"	34"	46"	58"	70"	82"	94"	106"						112"
10' 6"	3.5"	10"	22"	34"	46"	58"	70"	82"	94"	106"						118"
11'	3.5"	10"	22"	34"	46"	58"	70"	82"	94"	106"	118"					124"
11' 6"	3.5"	10"	22"	34"	46"	58"	70"	82"	94"	106"	118"					130"
12'	3.5"	10"	22"	34"	46"	58"	70"	82"	94"	106"	118"	130"				136"
12' 6"	3.5"	10"	22"	34"	46"	58"	70"	82"	94"	106"	118"	130"				142"
13'	3.5"	10"	22"	34"	46"	58"	70"	82"	94"	106"	118"	130"	142"			148"
13' 6"	3.5"	10"	22"	34"	46"	58"	70"	82"	94"	106"	118"	130"	142"			154"
14'	3.5"	10"	22"	34"	46"	58"	70"	82"	94"	106"	118"	130"	142"	154"		160"

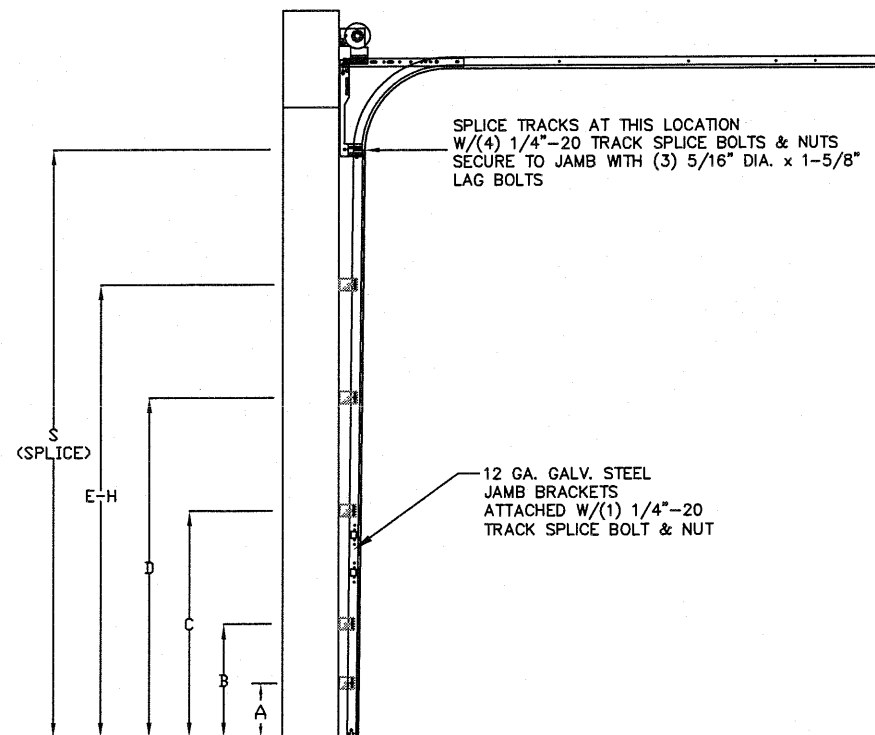
ALL TRACK ATTACHMENT SPACING +/-2" ALLOWED WITH SYP NO. 2 OR BETTER ONLY

TABLE 3

Section Width (ft)	Panel Type	Center Stile Locations (Measured from Left Edge)		
		1st (in)	3rd (in)	5th (in)
16' 2"	Short	50.27	97.00	143.73
16' 2"	Long	51.17	97.00	142.83
16' 2"	Oak Summit	48.75	97.00	145.25
16' 4"	Short	51.27	98.00	144.73
16' 4"	Long	52.17	98.00	143.83
16' 4"	Oak Summit	49.08	98.00	146.92
16' 6"	Short	52.27	99.00	145.73
16' 6"	Long	51.34	99.00	146.66
16' 6"	Oak Summit	49.42	99.00	148.59
16' 8"	Short	51.34	100.00	148.66
16' 8"	Long	52.20	100.00	147.80
16' 8"	Oak Summit	49.92	100.00	150.09
16' 10"	Short	51.50	101.00	150.50
16' 10"	Long	53.20	101.00	148.80
16' 10"	Oak Summit	50.15	101.00	151.59
17' 0"	Short	53.34	102.00	150.66
17' 0"	Long	54.20	102.00	149.80
17' 0"	Oak Summit	50.92	102.00	153.09
17' 2"	Short	53.00	103.00	153.00
17' 2"	Long	55.20	103.00	150.80
17' 2"	Oak Summit	51.42	103.00	154.59
17' 4"	Short	54.00	104.00	154.00
17' 4"	Long	56.20	104.00	151.80
17' 4"	Oak Summit	51.92	104.00	156.09
17' 6"	Short	55.00	105.00	155.00
17' 6"	Long	57.20	105.00	152.80
17' 6"	Oak Summit	52.42	105.00	157.59
17' 8"	Short	54.80	106.00	157.20
17' 8"	Long	55.80	106.00	156.20
17' 8"	Oak Summit	52.92	106.00	159.09
17' 10"	Short	55.80	107.00	158.20
17' 10"	Long	56.25	107.00	157.75
17' 10"	Oak Summit	53.42	107.00	160.59
18' 0"	Short	57.25	108.00	158.75
18' 0"	Long	57.80	108.00	158.20
18' 0"	Oak Summit	53.92	108.00	162.09



AVAILABLE TRACK CONFIGURATIONS  
N.T.S.



TRACK CONFIGURATION FOR 6'6" UP TO 14' TALL DOORS (SEE TABLE 2)  
N.T.S.

REV	DESCRIPTION OF REVISIONS	DATE	BY

MAX SIZE 18' WIDTH 14' HEIGHT (DOOR HEIGHT SUBJECT TO WEIGHT LIMITATIONS)

DESIGN LOADS +37.0 PSF -40.7 PSF

TEST LOADS (1.5 x DESIGN LOADS) +55.5 PSF -61.1 PSF

LARGE MISSILE IMPACT RESISTANCE

Thomas L. Shelmerdine, PE (TX PE #85829) Structural Solutions, PA (TX Firm #F-004063)

STATE OF TEXAS  
THOMAS L. SHELMERDINE  
85829  
LICENSED PROFESSIONAL ENGINEER

TX

**Amarr**  
ENTREMATIC  
165 CARRIAGE COURT WINSTON-SALEM, NC. 27105

MODEL #1200 HERITAGE 3000  
MODEL #1200 OAK SUMMIT 3000  
SHORT, LONG, FLUSH & OAK SUMMIT PANELS

SIZE	DRAWN BY	RLR	DATE	06/12/14	DRAWING NUMBER
B	CHECKED BY		DATE		IRC-1218-155-26-1

SHEET 3 OF 3

5921-G.W. Friendly Ave., Greensboro, NC 27410