

SECTION A-A (SIDE VIEW)
N.T.S.

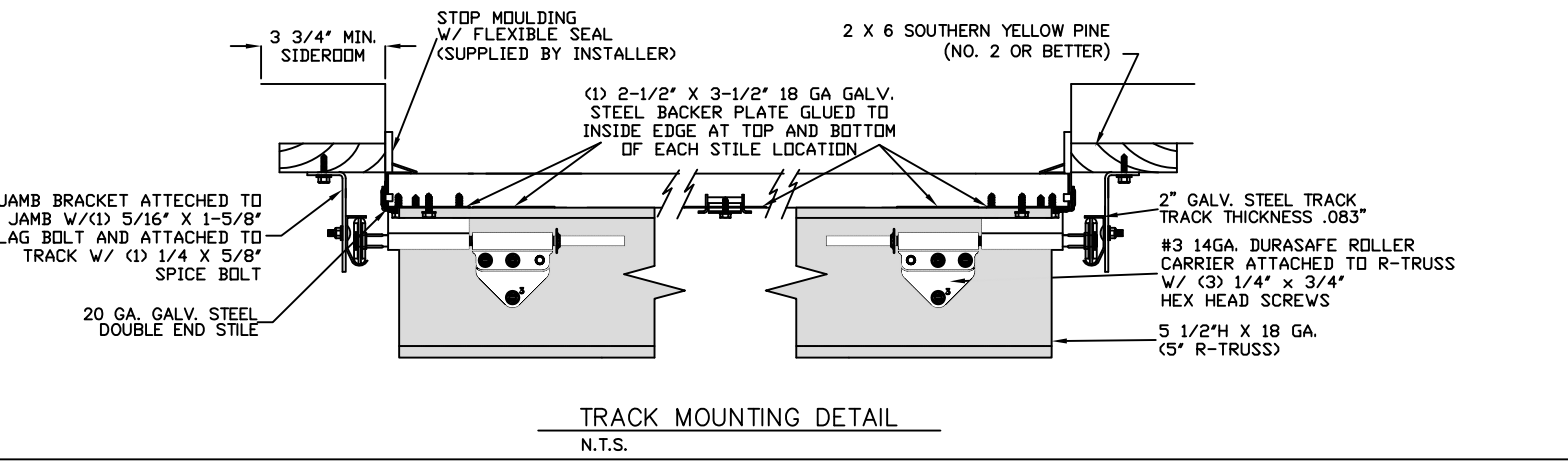
LARGE MISSILE IMPACT RESISTANT

THE METHOD OF TESTING WAS IN SUBSTANTIAL CONFORMANCE WITH THE PROCEDURE DESCRIBED IN ASTM E330, AND TAS 201, 201, 203. THE PRESSURES SHOWN ON THE DRAWINGS WERE CALCULATED USING ASCE 7-98/02/05 WITH THE FOLLOWING PARAMETERS (5 FEET OF DOOR WIDTH IN THE END ZONE, ROOF AT ANY SLOPE):

WIND SPEED (MPH)	174	158	150	143	137
EXPOSURE LEVEL	B	C	C	D	D
MEAN ROOF HEIGHT	30'	15'	25'	15'	25'

SPECIFICATIONS AND NOTES

- ALL THE LOAD FROM THE DOOR IS TRANSFERRED TO THE VERTICAL TRACK, FROM THE TRACK THE LOAD IS TRANSFERRED TO THE VERTICAL JAMBS. THE HORIZONTAL JAMB OR HEADER RECEIVES NO PORTION OF THE LOAD TRANSFERRED FROM THE DOOR.
- EACH VERTICAL JAMBS RECEIVES MAXIMUM DESIGN LOADS OF: +384.0 LBS/FT & -416.0 LBS/FT
- DOOR AND HARDWARE WILL BE DESIGNED, MANUFACTURED AND INSTALLED WITH STANDARDS AS SET FORTH BY DASMA.
- DOOR SECTIONS SHALL BE 24 GA. (.022) MIN. EXTERIOR SKIN ROLLED FORMED, W/ BAKED ON POLYESTER FINISH
- DOORS UPTO 7'0" HIGH CONSIST OF (4) SECTIONS AS SHOWN. USE (1) 5.5" R-TRUSS PER SECTION AND (1) 3" 20GA STRUT ON BTM. SECTION
- DOORS OVER (4) SECTIONS REFER TO TABLE 1
- SUPPORTING STRUCTURAL ELEMENTS SHALL BE DESIGNED BY A REGISTERED PROFESSIONAL ENGINEER FOR WIND LOADS INDICATED ON THIS DRAWING IN ADDITION TO OTHER LOADINGS.



REV	DESCRIPTION OF REVISIONS	DATE	BY
A	REVISED NOTE 8	1/7/09	CBT
B	UPDATED WJATS AND ADDED ASCE MPH DETAIL	12/5/11	RLR

MAX SIZE 16' x 14'
SIZES SUBJECT TO WEIGHT LIMITATIONS
DESIGN LOADS +48.0 PSF -52.0 PSF
LARGE MISSILE IMPACT RESISTANCE

Amarr
165 CARRIAGE COURT WINSTON-SALEM, N.C. 27105 WWW.AMARR.COM

MODEL #1200 HERITAGE 3000
MODEL #1550 OAK SUMMIT 3000
SHORT, LONG, FLUSH & OAK SUMMIT PANELS

SIZE	DRAWN BY SKW	DATE 5/08/07	DRAWING NUMBER
B	CHECKED BY BHG	DATE 5/08/07	IRC-1216-175-26-1

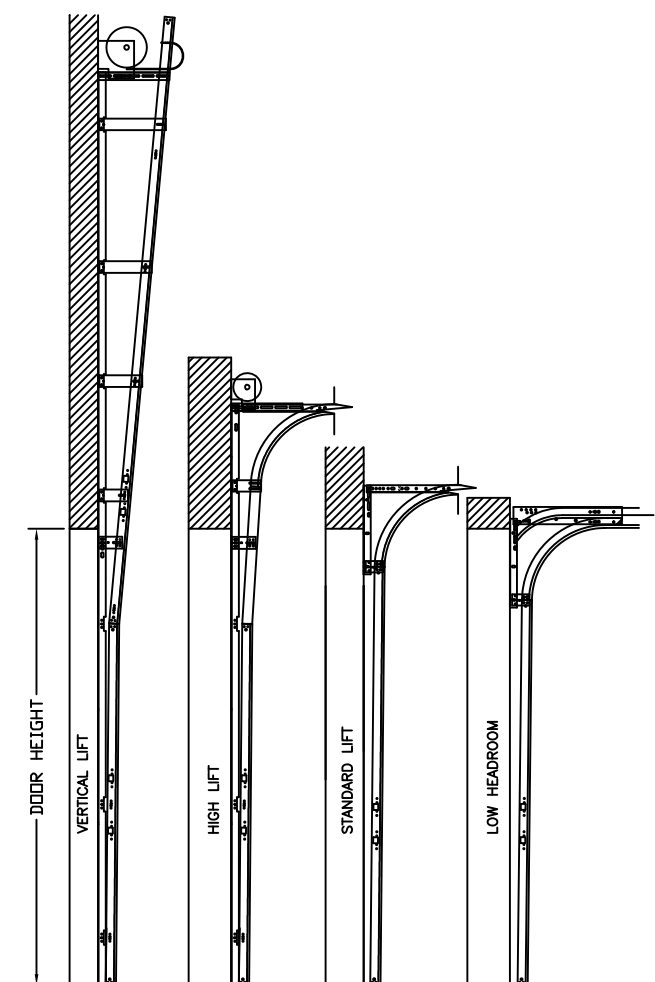
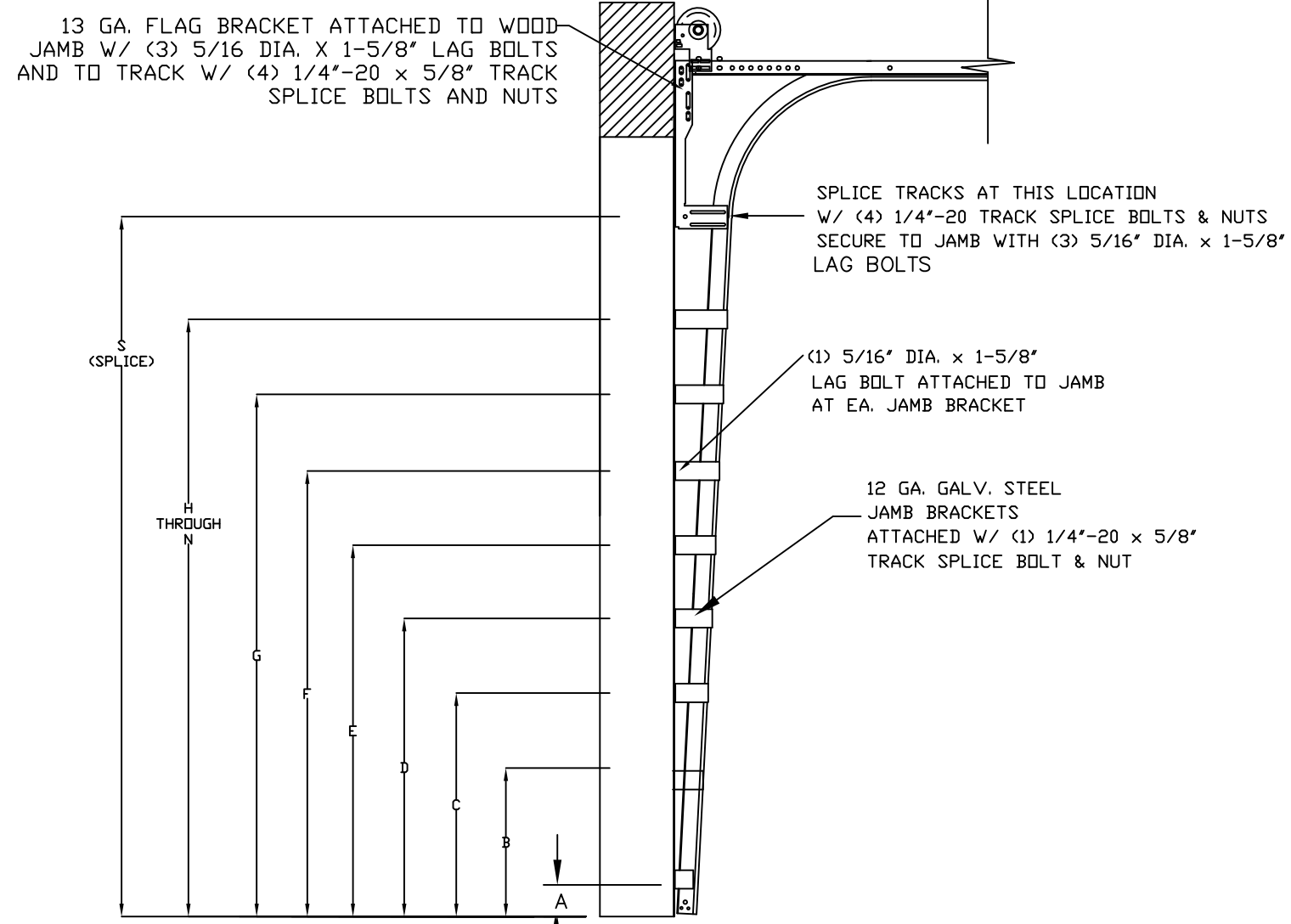
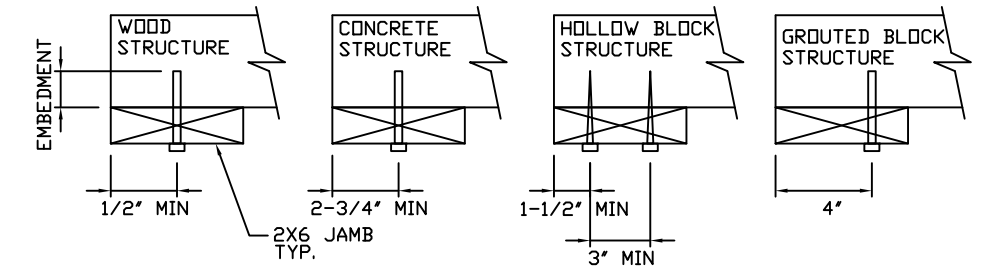
ENGINEER: THOMAS L. SHLME RDINE P.E. LIC. No. 0048579 SHEET 1 OF 3

WOOD JAMB ATTACHMENT TO STRUCTURE

2 X 6 VERTICAL JAMB ATTACHMENT TO WOOD FRAME STRUCTURE
 5/16" X 3" LAG SCREWS STARTING 6" FROM ENDS THEN 12" O.C. (1 1/2" EMBEDMENT)
2 X 6 VERTICAL JAMB ATTACHMENT TO 2,000 PSI CONCRETE
 HILTI KWIK BOLT 3/8" X 4" STARTING 6" FROM ENDS THEN 24" O.C. (2 1/2" EMBEDMENT)
 HILTI SLEEVE ANCHOR 3/8" X 2-3/4" STARTING 6" FROM ENDS THEN 10" O.C. (1 1/4" EMBEDMENT)
 ITW/RAMSET REDHEAD (TRU-BOLT) 3/8" X 4" STARTING 6" FROM ENDS THEN 20" O.C. (2 1/2" EMBEDMENT)
2 X 6 VERTICAL JAMB ATTACHMENT TO HOLLOW C-90 BLOCK
 SIMPSON 1/4" X 3" TITEN SCREWS STARTING 6" FROM ENDS, USE PAIRS OF FASTENERS (3" APART) AT 8" O.C. (1 1/2" EMBEDMENT)
 HILTI 1/4" X 2-3/4" KWIK-CON II+ SCREWS STARTING 6" FROM ENDS, USE PAIRS OF FASTENERS (3" APART) AT 8" O.C. (1 1/4" EMBEDMENT)

2 X 6 VERTICAL JAMB ATTACHMENT TO GROUTED C-90 BLOCK (2000 PSI GROUT)
 HILTI SLEEVE ANCHOR 3/8" X 2-3/4" STARTING 6" FROM ENDS THEN 12" O.C. (1 1/4" EMBEDMENT) (OR, USE FASTENERS FOR HOLLOW C-90 BLOCK)

*LAGS AND BOLTS CAN BE COUNTERSUNK TO PROVIDE A FLUSH MOUNTING SURFACE.
 *PREPARATION OF WOOD JAMBS BY OTHERS



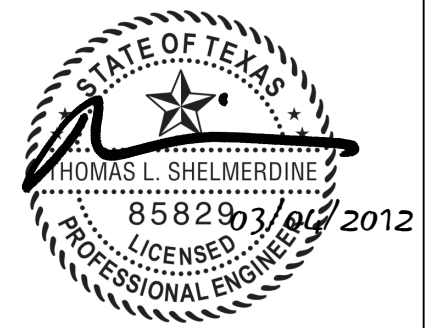
AVAILABLE TRACK CONFIGURATIONS
 N.T.S.

SEE (TABLE 2) FOR JAMB BRACKET SPACING

STANDARD TRACK CONFIGURATION FOR 6'6" UP TO 14' TALL DOORS
 N.T.S.

REV	DESCRIPTION OF REVISIONS	DATE	BY
A	REVISED NOTE 8	1/7/09	CBT
B	UPDATED WJATS AND ADDED ASCE MPH DETAIL	12/5/11	RLR

MAX SIZE
 16' x 14'
 SIZES SUBJECT TO WEIGHT LIMITATIONS
 DESIGN LOADS
 +48.0 PSF
 -52.0 PSF
 LARGE MISSILE
 IMPACT
 RESISTANCE



165 CARRIAGE COURT WINSTON-SALEM, N.C. 27105 WWW.AMARR.COM

MODEL #1200 HERITAGE 3000
 MODEL #1550 OAK SUMMIT 3000
 SHORT, LONG, FLUSH & OAK SUMMIT PANELS

SIZE	DRAWN BY	SKW	DATE	5/08/07	DRAWING NUMBER
B	CHECKED BY	BHG	DATE	5/08/07	IRC-1216-175-26-1
ENGINEER: THOMAS L. SHELMERDINE P.E. LIC. No. 0048579				SHEET 2 OF 3	

TABLE 3

Section	Panel Type	Center Stile Locations (Measured from Left Edge)	
		1st (in)	2st (in)
09'2	Short	55.00	
09'2	Long	55.00	
09'2	Oak Summit	55.00	
09'4	Short	56.00	
09'4	Long	56.00	
09'4	Oak Summit	56.00	
09'6	Short	57.00	
09'6	Long	57.00	
09'6	Oak Summit	57.00	
09'8	Short	58.00	
09'8	Long	58.00	
09'8	Oak Summit	58.00	
09'10	Short	59.00	
09'10	Long	59.00	
09'10	Oak Summit	59.00	
10'0	Short	48.41	71.59
10'0	Long	60.00	
10'0	Oak Summit	60.00	
10'2	Short	49.32	72.68
10'2	Long	61.00	
10'2	Oak Summit	61.00	
10'4	Short	50.32	73.68
10'4	Long	62.00	
10'4	Oak Summit	62.00	
10'6	Short	50.84	75.17
10'6	Long	63.00	
10'6	Oak Summit	63.00	
10'8	Short	51.84	76.17
10'8	Long	64.00	
10'8	Oak Summit	64.00	
10'10	Short	52.50	77.50
11'0	Short	53.50	78.50
11'0	Long	44.41	87.59
11'2	Short	54.20	79.80
11'2	Long	45.30	88.70
11'4	Short	55.20	80.80
11'4	Long	46.30	89.70
11'6	Short	56.20	81.80
11'6	Long	47.30	90.70
11'8	Short	57.20	82.80
11'8	Long	47.63	92.38
11'10	Short	47.81	94.19
11'10	Long	48.30	93.70
12'0	Short	48.81	95.19
12'0	Long	49.63	94.38
12'0	Oak Summit	48.31	95.69
12'2	Short	49.64	96.36
12'2	Long	50.08	95.92
12'2	Oak Summit	49.06	96.94
12'4	Short	50.64	97.36
12'4	Long	51.08	96.92
12'4	Oak Summit	49.81	98.19
12'6	Short	50.67	99.33
12'6	Long	51.17	98.83
12'6	Oak Summit	50.56	99.44

Section	Panel Type	Center Stile Locations			
		1st (in)	2st (in)	3rd (in)	4th (in)
12'8	Short	51.67	100.33		
12'8	Long	52.10	99.90		
12'8	Oak Summit	51.31	100.69		
12'10	Short	52.25	101.75		
12'10	Long	53.10	100.90		
12'10	Oak Summit	52.06	101.94		
13'0	Short	53.00	103.00		
13'0	Long	54.10	101.90		
13'0	Oak Summit	52.81	103.19		
13'2	Short	54.00	104.00		
13'2	Long	55.10	102.90		
13'2	Oak Summit	53.56	104.44		
13'4	Short	54.40	105.60		
13'4	Long	54.90	105.10		
13'4	Oak Summit	54.31	105.69		
13'6	Short	55.40	106.60		
13'6	Long	55.90	106.10		
13'6	Oak Summit	55.06	106.94		
13'8	Short	56.40	107.60		
13'8	Long	56.63	107.38		
13'8	Oak Summit	55.81	108.19		
13'10	Short	57.16	82.94	108.71	
13'10	Long	57.17	108.83		
13'10	Oak Summit	56.56	109.44		
14'0	Short	57.76	83.94	110.11	
14'0	Long	58.63	109.38		
14'0	Oak Summit	57.31	110.69		
14'2	Short	58.85	84.94	111.41	
14'2	Long	59.17	110.83		
14'2	Oak Summit	58.06	111.94		
14'4	Short	59.16	85.94	112.71	
14'4	Long	60.17	11.83		
14'4	Oak Summit	58.81	113.19		
14'6	Short	59.86	86.94	114.01	
14'6	Long	61.17	112.83		
14'6	Oak Summit	59.56	114.44		
14'8	Short	60.56	87.94	115.31	
14'8	Long	44.81	88.00	131.19	
14'10	Short	61.26	88.94	116.61	
14'10	Long	45.60	89.00	132.40	
15'0	Short	61.94	89.94	117.94	
15'0	Long	46.60	90.00	133.40	
15'2	Short	62.66	90.94	119.21	
15'2	Long	47.60	91.00	134.40	
15'4	Short	53.60	79.20	104.80	130.40
15'4	Long	47.25	92.00	136.75	
15'6	Short	46.62	93.00	139.38	
15'6	Long	47.60	93.00	138.40	
15'6	Oak Summit	47.42	93.00	138.58	
15'8	Short	47.62	94.00	140.38	
15'8	Long	48.60	94.00	139.40	
15'8	Oak Summit	48.02	94.00	139.98	
15'10	Short	48.62	95.00	141.38	
15'10	Long	49.17	95.00	140.83	
15'10	Oak Summit	48.62	95.00	141.38	
16'0	Short	49.62	96.00	142.38	
16'0	Long	50.60	96.00	141.40	
16'0	Oak Summit	48.42	96.00	143.58	

TABLE 1

DOOR HEIGHT	SECTION HEIGHTS							
	Btm	#2	#3	#4	#5	#6	#7	#8
14'0"	21"	21"	21"	21"	21"	21"	21"	21"
13'6"	21"	21"	21"	21"	21"	18"	18"	21"
13'0"	21"	21"	21"	18"	18"	18"	18"	21"
12'6"	21"	18"	18"	18"	18"	18"	18"	21"
12'0"	21"	21"	21"	21"	21"	18"	21"	
11'6"	21"	21"	21"	18"	18"	18"	21"	
11'0"	21"	18"	18"	18"	18"	18"	21"	
10'6"	21"	21"	21"	21"	21"	21"		
10'0"	21"	21"	21"	18"	18"	21"		
9'6"	21"	18"	18"	18"	18"	21"		
9'0"	18"	18"	18"	18"	18"	18"		
8'6"	21"	21"	21"	18"	21"			
8'0"	21"	18"	18"	18"	21"			
7'6"	18"	18"	18"	18"	18"			
7'0"	21"	21"	21"	21"				
6'6"	21"	18"	18"	21"				

TABLE 2

DOOR HEIGHT	TRACK ATTACHMENT														SPLICE	
	A	B	C	D	E	F	G	H	I	J	K	L	M	N		S
6'6"	3"	14"	27"	38"	46"	56"	64"									70"
7'	3"	14"	27"	38"	46"	56"	68"									76"
7'6"	3"	14"	27"	38"	46"	56"	68"	78"								82"
8'	3"	14"	27"	38"	46"	56"	68"	78"								88"
8'6"	3"	14"	27"	38"	46"	56"	68"	78"	88"							94"
9'	3"	14"	27"	38"	46"	56"	68"	78"	88"							100"
9'6"	3"	14"	27"	38"	46"	56"	68"	78"	88"	98"						106"
10'	3"	14"	27"	38"	46"	56"	68"	78"	88"	100"						112"
10'6"	3"	14"	27"	38"	46"	56"	68"	78"	88"	100"	110"					118"
11'	3"	14"	27"	38"	46"	56"	68"	78"	88"	100"	110"					124"
11'6"	3"	14"	27"	38"	46"	56"	68"	78"	88"	100"	110"	120"				130"
12'	3"	14"	27"	38"	46"	56"	68"	78"	88"	100"	110"	122"				136"
12'6"	3"	14"	27"	38"	46"	56"	68"	78"	88"	100"	109"	122"	132"			142"
13'	3"	14"	27"	38"	46"	56"	68"	78"	88"	100"	114"	122"	134"			148"
13'6"	3"	14"	27"	38"	46"	56"	68"	78"	88"	100"	109"	122"	134"	144"		154"
14'	3"	14"	27"	38"	46"	56"	68"	78"	88"	100"	114"	122"	134"	146"		160"

ALL TRACK ATTACHMENT SPACING +/-2" ALLOWED WITH SYP NO. 2 OR BETTER ONLY

REV	DESCRIPTION OF REVISIONS	DATE	BY
A	REVISED NOTE 8	1/7/09	CBT
B	UPDATED TO FBC 2010	12/5/11	RLR

MAX SIZE
16' x 14'
SIZES SUBJECT TO
WEIGHT LIMITATIONS
DESIGN LOADS
+48.0 PSF
-52.0 PSF
LARGE MISSILE
IMPACT
RESISTANCE



165 CARRIAGE COURT WINSTON-SALEM, N.C. 27105 WWW.AMARR.COM
MODEL #1200 HERITAGE 3000
MODEL #1200 OAK SUMMIT 3000
 SHORT, LONG, FLUSH & OAK SUMMIT PANELS

SIZE	DRAWN BY	SKW	DATE	5/08/07	DRAWING NUMBER
B	CHECKED BY	BHG	DATE	5/08/07	IRC-1216-175-26-1
ENGINEER: THOMAS L. SHELME RDINE P.E. LIC. No. 0048579					SHEET 3 OF 3