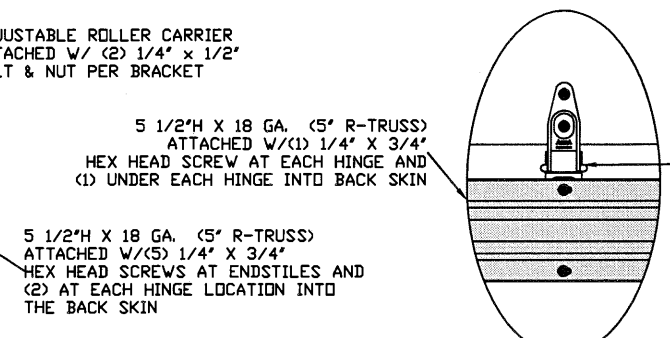
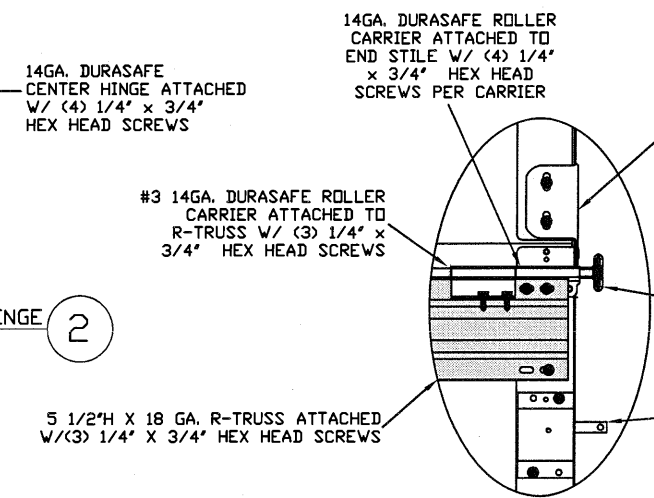


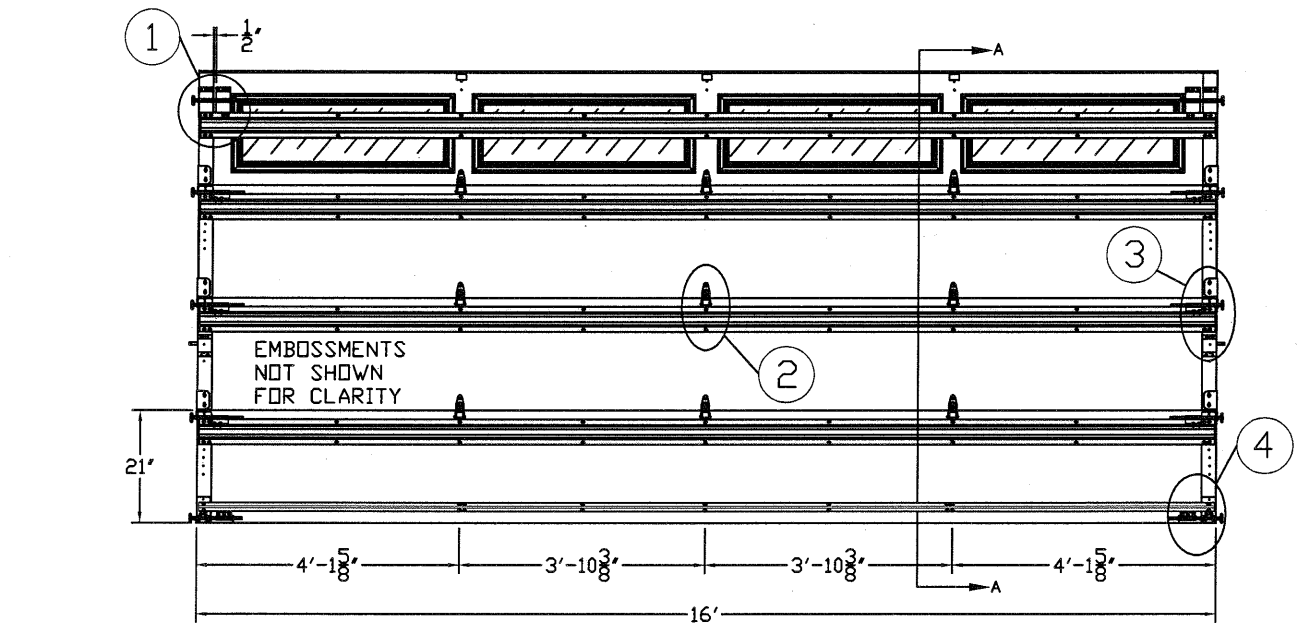
TYPICAL TOP FIXTURES
N.T.S.



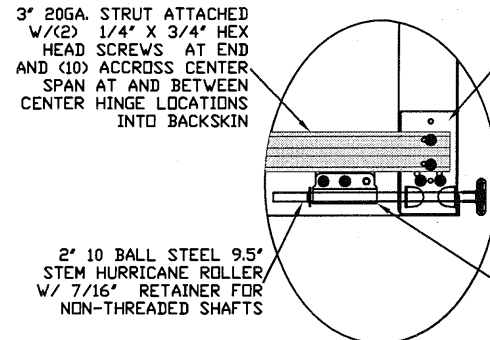
TYPICAL DURASAFE CENTER HINGE
N.T.S.



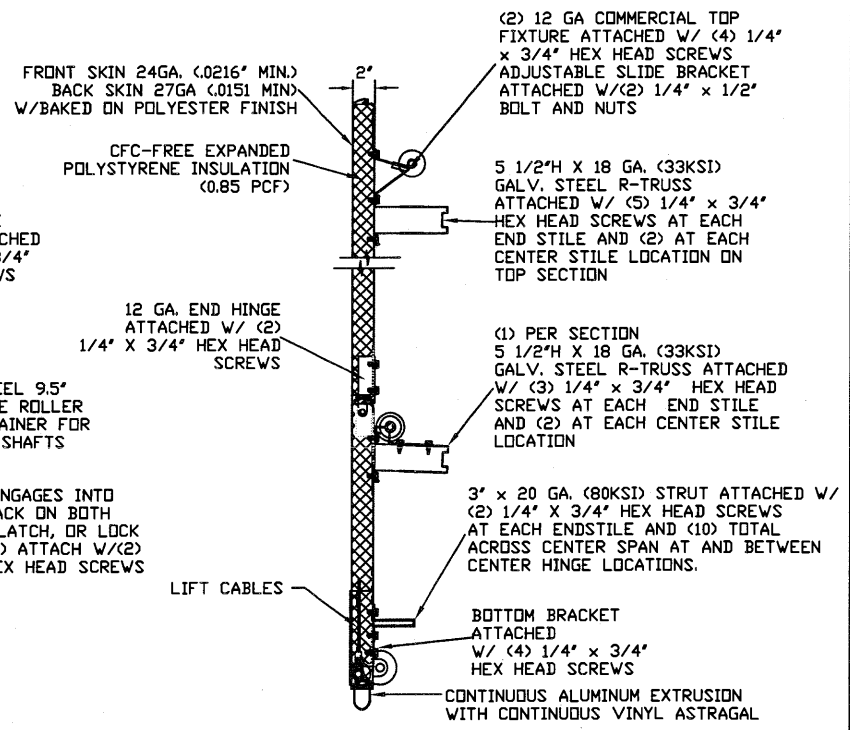
TYPICAL DURASAFE END HINGE
N.T.S.



INSIDE ELEVATION
N.T.S.

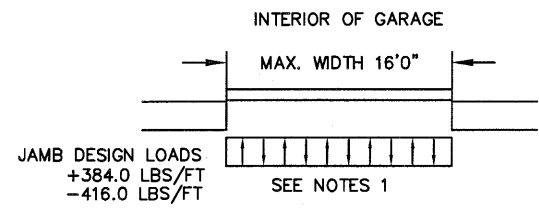


TYPICAL BOTTOM BRACKET
N.T.S.



SECTION A-A (SIDE VIEW)
N.T.S.

LARGE MISSILE IMPACT RESISTANT

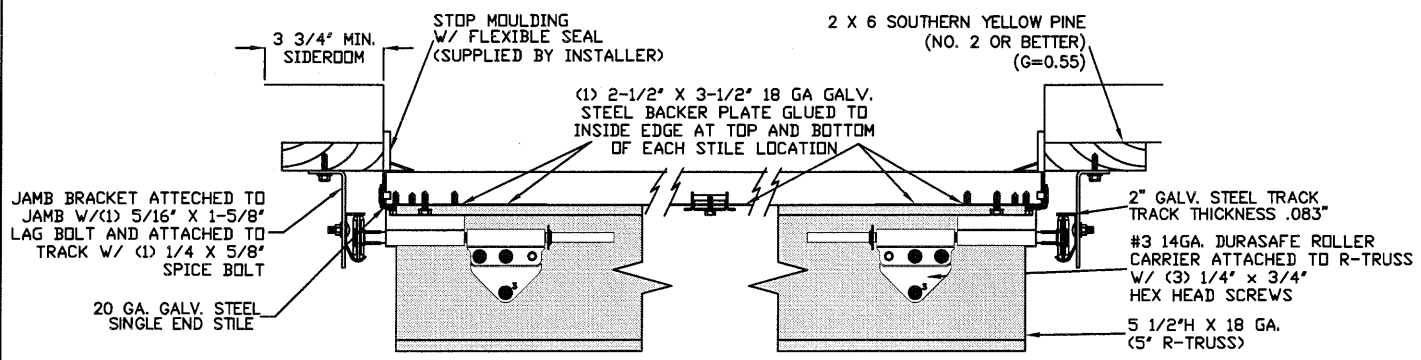


SPECIFICATIONS AND NOTES

1. ALL THE LOAD FROM THE DOOR IS TRANSFERRED TO THE VERTICAL TRACK, FROM THE TRACK THE LOAD IS TRANSFERRED TO THE VERTICAL JAMBS. THE HORIZONTAL JAMB OR HEADER RECEIVES NO PORTION OF THE LOAD TRANSFERRED FROM THE DOOR.
2. EACH VERTICAL JAMBS RECEIVES MAXIMUM DESIGN LOADS OF: +384.0 LBS/FT & -416.0 LBS/FT
3. DOOR AND HARDWARE WILL BE DESIGNED, MANUFACTURED AND INSTALLED WITH STANDARDS AS SET FORTH BY DASMA.
4. DOOR SECTIONS SHALL BE 24 GA. (.0216) MIN. EXTERIOR SKIN ROLLED FORMED, W/ BAKED ON POLYESTER FINISH
5. DOORS UP TO 7'0" HIGH CONSIST OF (4) SECTIONS AS SHOWN. USE (1) 5.5" R-TRUSS PER SECTION AND (1) 3" 20GA STRUT ON BTM. SECTION
6. DOORS OVER (4) SECTIONS REFER TO TABLE 1
7. SUPPORTING STRUCTURAL ELEMENTS SHALL BE DESIGNED BY A REGISTERED PROFESSIONAL ENGINEER FOR WIND LOADS INDICATED ON THIS DRAWING IN ADDITION TO OTHER LOADINGS.

THE METHOD OF TESTING WAS IN SUBSTANTIAL CONFORMANCE WITH THE PROCEDURE DESCRIBED IN ASTM E330, E1886, E1996, & F588, ANSI/DASMA 108 & 115, AND TAS 201, 201, 203. THE PRESSURES SHOWN ON THE DRAWINGS WERE CALCULATED USING ASCE 7-98/02/05 WITH THE FOLLOWING PARAMETERS (5 FEET OF DOOR WIDTH IN THE END ZONE, ROOF AT ANY SLOPE I=1.0):

WIND SPEED (MPH)	174	158	150	143	137
EXPOSURE LEVEL	B	C	C	D	D
MEAN ROOF HEIGHT	30'	15'	25'	15'	25'



TRACK MOUNTING DETAIL
N.T.S.

REV	DESCRIPTION OF REVISIONS	DATE	BY

MAX SIZE 16' x 14'
SIZES SUBJECT TO WEIGHT LIMITATIONS

DESIGN LOADS +48.0 PSF -52.0 PSF

LARGE MISSILE IMPACT RESISTANCE

Thomas L. Shelmerdine, PE (TX PE #85829) Structural Solutions, PA (TX Firm #F-004063)

TX

5921-G W. Friendly Ave., Greensboro, NC 27410

165 CARRIAGE COURT WINSTON-SALEM, N.C. 27105 WWW.AMARR.COM

MODEL #1200 HERITAGE 3000
MODEL #1200 OAK SUMMIT 3000
SHORT, LONG, FLUSH & OAK SUMMIT PANELS

SIZE	DRAWN BY	RLR	DATE	11/11/13	DRAWING NUMBER
B	CHECKED BY		DATE		IRC-1216-175-26-G

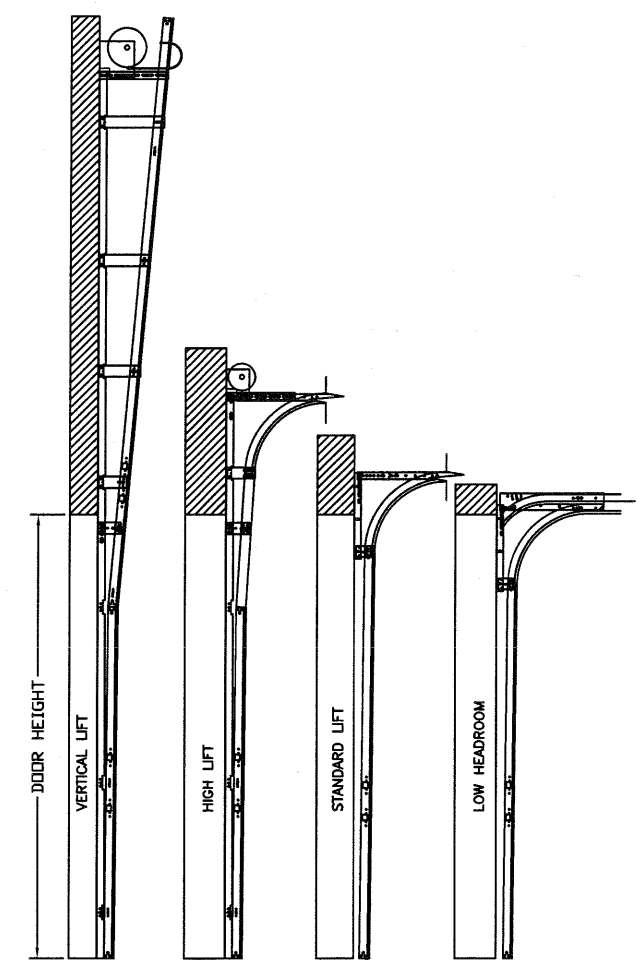
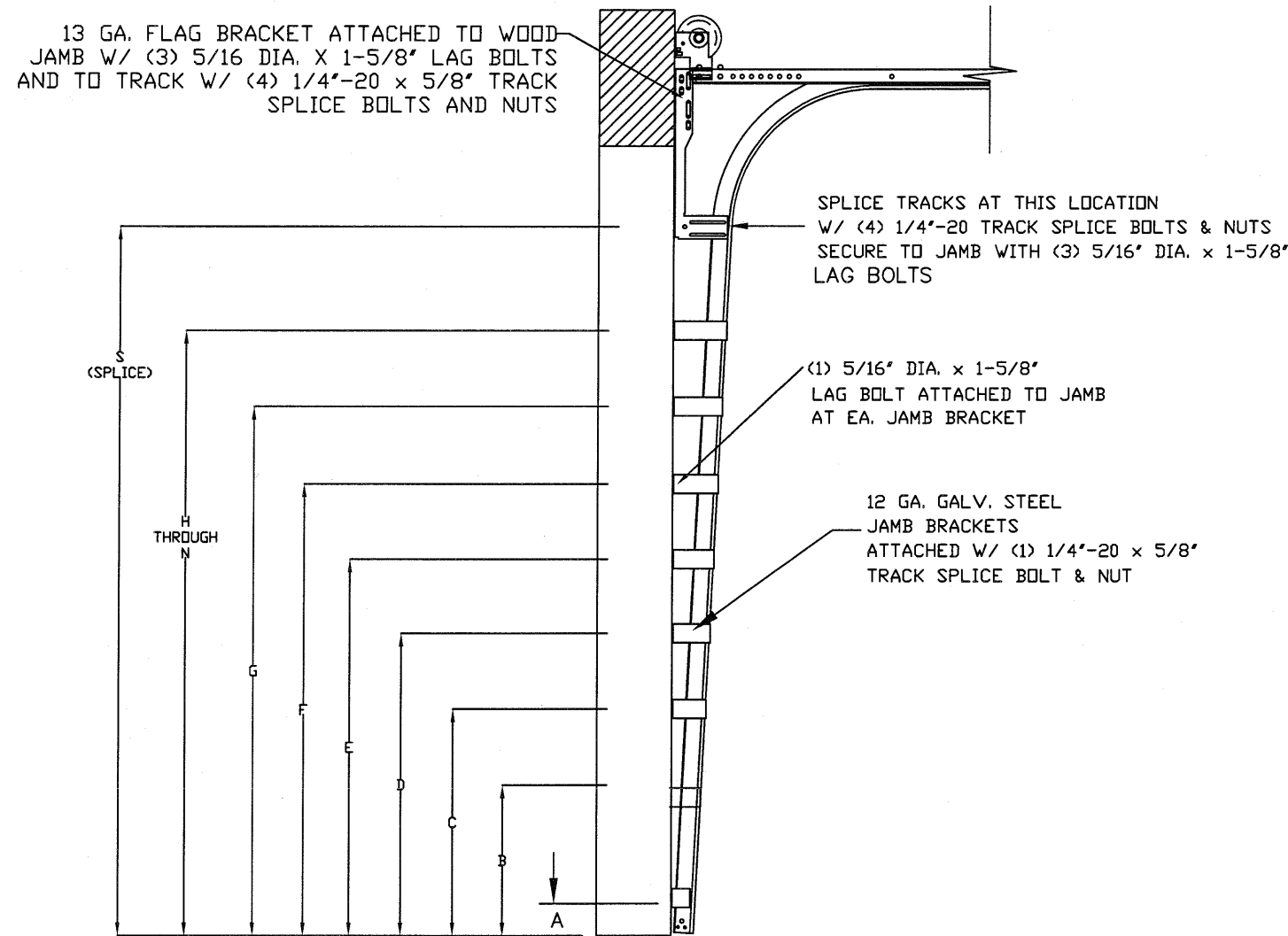
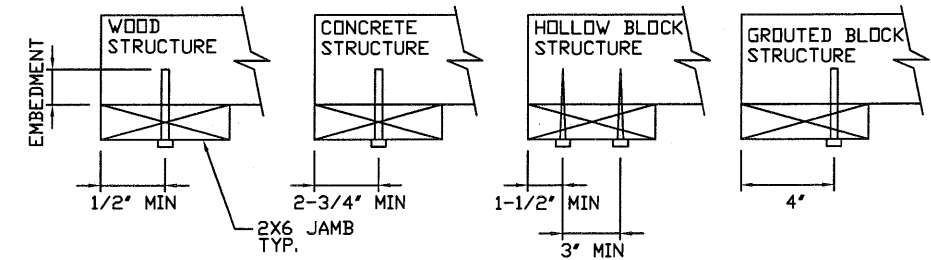
SHEET 1 OF 4

WOOD JAMB ATTACHMENT TO STRUCTURE

2 X 6 VERTICAL JAMB ATTACHMENT TO WOOD FRAME STRUCTURE
 5/16" X 3" LAG SCREWS STARTING 6" FROM ENDS THEN 12" O.C. (1 1/2" EMBEDMENT)
2 X 6 VERTICAL JAMB ATTACHMENT TO 2,000 PSI CONCRETE
 HILTI KWIK BOLT 3/8" X 4" STARTING 6" FROM ENDS THEN 24" O.C. (2 1/2" EMBEDMENT)
 HILTI SLEEVE ANCHOR 3/8" X 2-3/4" STARTING 6" FROM ENDS THEN 10" O.C. (1 1/4" EMBEDMENT)
 ITW/RAMSET REDHEAD (TRU-BOLT) 3/8" X 4" STARTING 6" FROM ENDS THEN 20" O.C. (2 1/2" EMBEDMENT)
2 X 6 VERTICAL JAMB ATTACHMENT TO HOLLOW C-90 BLOCK
 SIMPSON 1/4" X 3" TITEN SCREWS STARTING 6" FROM ENDS, USE PAIRS OF FASTENERS (3" APART) AT 8" O.C. (1 1/2" EMBEDMENT)
 HILTI 1/4" X 2-3/4" KWIK-CON II+ SCREWS STARTING 6" FROM ENDS, USE PAIRS OF FASTENERS (3" APART) AT 8" O.C. (1 1/4" EMBEDMENT)

2 X 6 VERTICAL JAMB ATTACHMENT TO GROUTED C-90 BLOCK (2000 PSI GROUT)
 HILTI SLEEVE ANCHOR 3/8" X 2-3/4" STARTING 6" FROM ENDS THEN 12" O.C. (1 1/4" EMBEDMENT) (OR, USE FASTENERS FOR HOLLOW C-90 BLOCK)

*LAGS AND BOLTS CAN BE COUNTERSUNK TO PROVIDE A FLUSH MOUNTING SURFACE.
 *PREPARATION OF WOOD JAMBS BY OTHERS



SEE (TABLE 2) FOR JAMB BRACKET SPACING

STANDARD TRACK CONFIGURATION FOR 6'6" UP TO 14' TALL DOORS
 N.T.S.

AVAILABLE TRACK CONFIGURATIONS
 N.T.S.

REV	DESCRIPTION OF REVISIONS	DATE	BY

MAX SIZE 16' x 14'
 SIZES SUBJECT TO WEIGHT LIMITATIONS
 DESIGN LOADS +48.0 PSF -52.0 PSF
 LARGE MISSILE IMPACT RESISTANCE

Thomas L. Shelmerdine, PE (TX PE #85829)
 Structural Solutions, PA (TX Firm #F-004063)

TX

5921-G W. Friendly Ave., Greensboro, NC 27410

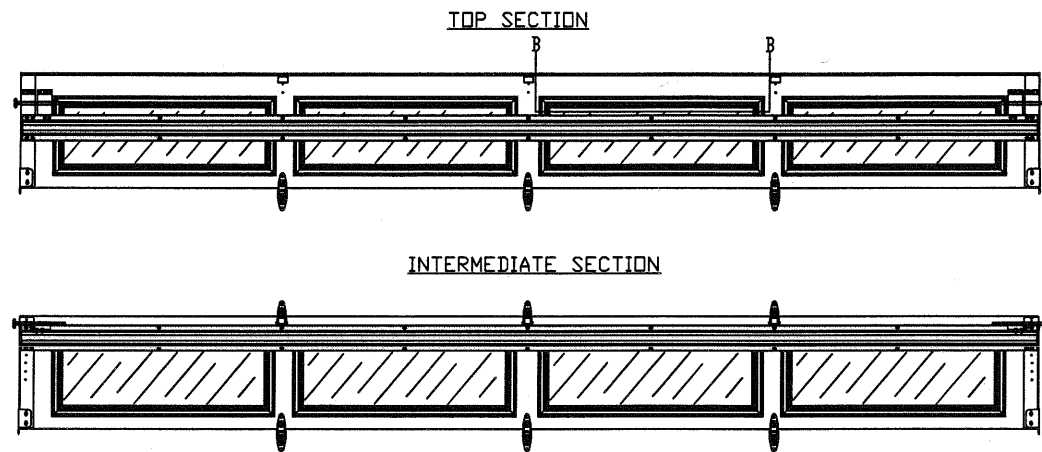
Amarr

165 CARRIAGE COURT WINSTON-SALEM, N.C. 27105 WWW.AMARR.COM

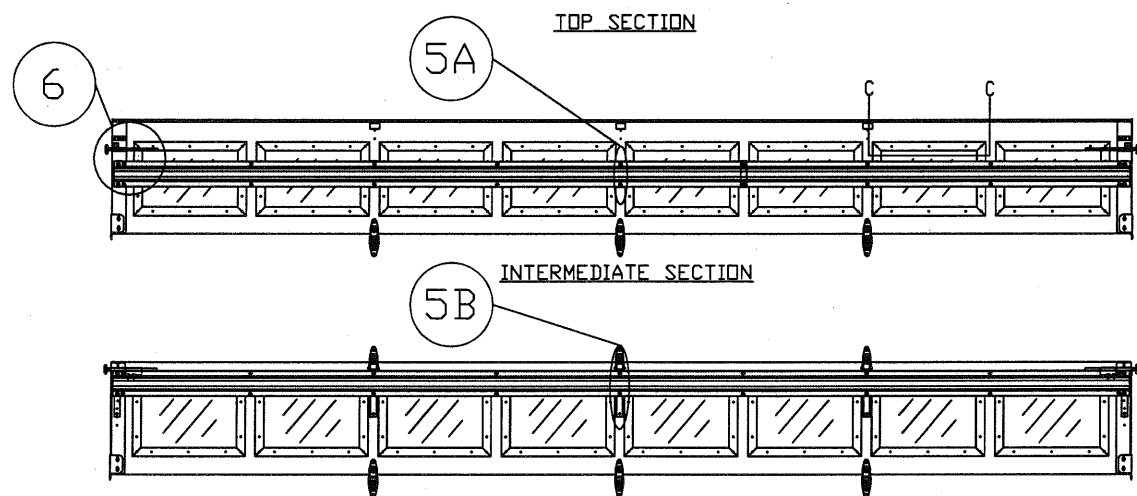
MODEL #1200 HERITAGE 3000
MODEL #1200 OAK SUMMIT 3000
 SHORT, LONG, FLUSH & OAK SUMMIT PANELS

SIZE	DRAWN BY	RLR	DATE	11/11/13	DRAWING NUMBER
B	CHECKED BY		DATE		IRC-1216-175-26-G

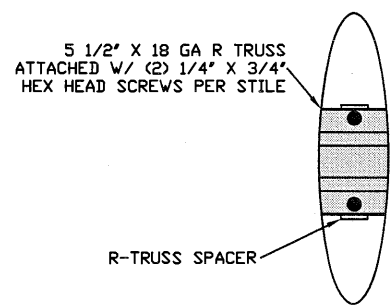
SHEET 2 OF 4



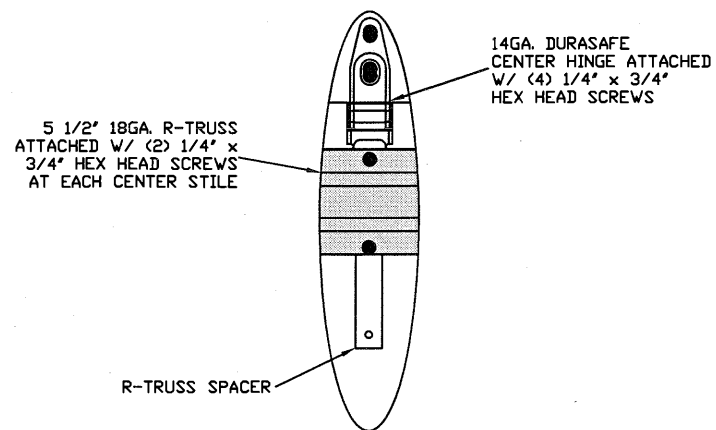
OPTIONAL LONG PANEL GLAZED SECTION R-TRUSS AND STILE LAYOUT
N.T.S.



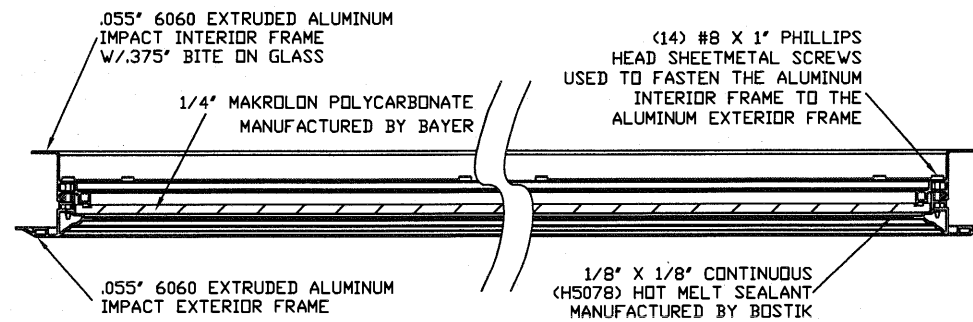
OPTIONAL SHORT PANEL GLAZED SECTION R-TRUSS AND STILE LAYOUT
N.T.S.



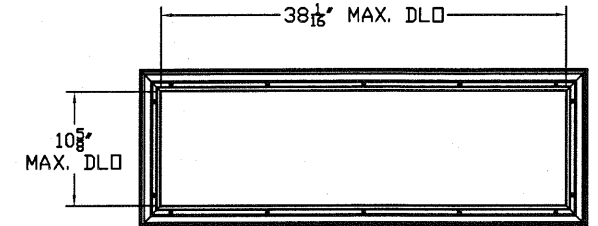
R-TRUSS SPACER
N.T.S. (5A)



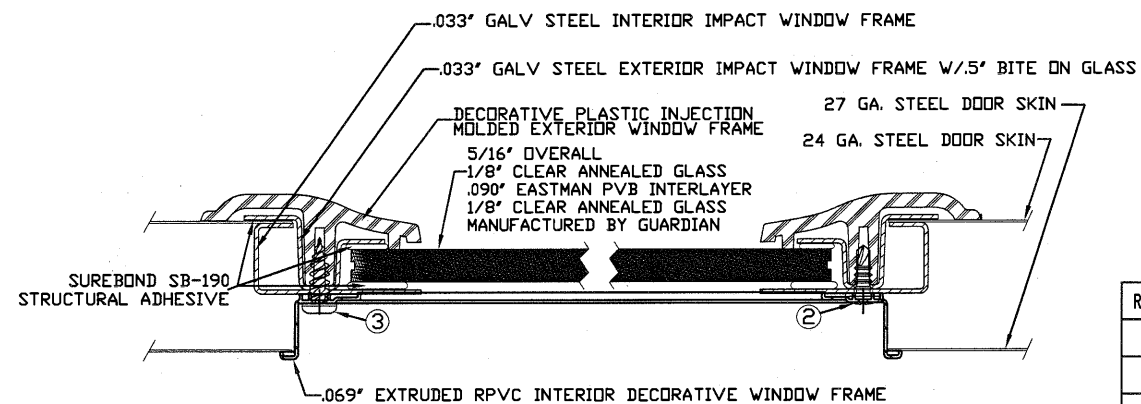
R-TRUSS SPACER
N.T.S. (5B)



SECTION B-B IMPACT WINDOW DETAIL
N.T.S.

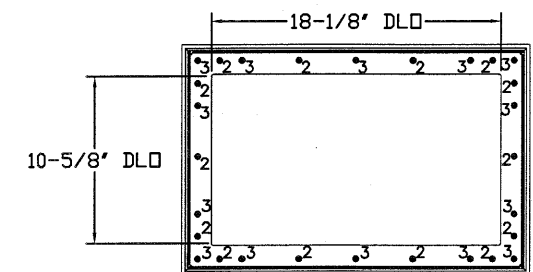


LONG PANEL IMPACT GLAZING FASTENER DETAIL
N.T.S.

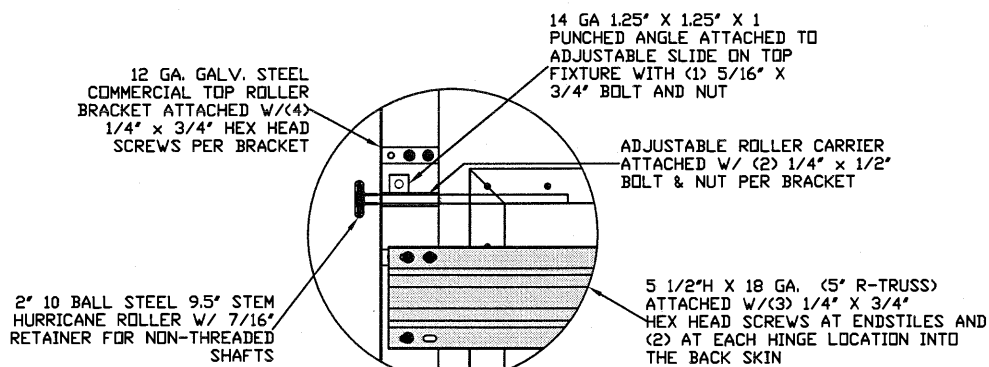


- 2 3/16" X 1/2" SCREW - USED TO FASTEN THE STEEL EXTERIOR IMPACT WINDOW FRAME TO THE STEEL INTERIOR IMPACT WINDOW FRAME.
- 11/64" X 1/2" SCREW - USED TO FASTEN DECORATIVE PLASTIC MOLDED WINDOW FRAME TO THE ASSEMBLY

SECTION C-C IMPACT WINDOW DETAIL
N.T.S.



IMPACT GLAZING FASTENER DETAIL
N.T.S.
GLAZING MEETS ASTM E1300-04



SHORT PANEL GLAZED TOP FIXTURE CONFIGURATION
N.T.S. (6)

REV	DESCRIPTION OF REVISIONS	DATE	BY

MAX SIZE
16' x 14'
SIZES SUBJECT
TO WEIGHT
LIMITATIONS

DESIGN LOADS
+48.0 PSF
-52.0 PSF

LARGE MISSILE
IMPACT
RESISTANCE

Thomas L. Shelmerdine, PE (TX PE #85829)
Structural Solutions, PA (TX Firm #F-004063)



TX

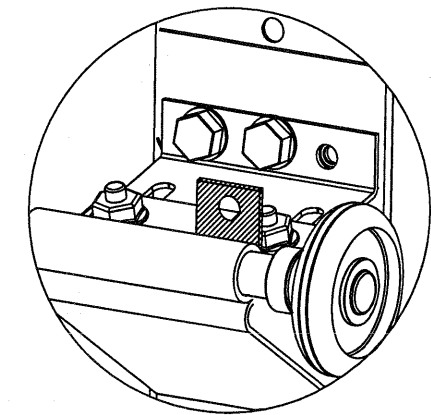
Amarr

165 CARRIAGE COURT WINSTON-SALEM, NC. 27105 WWW.AMARR.COM

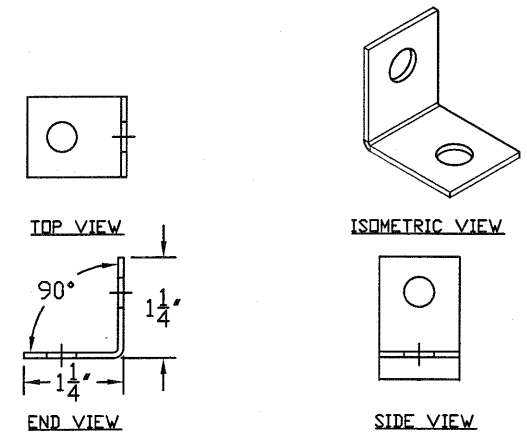
MODEL #1200 HERITAGE 3000
MODEL #1200 OAK SUMMIT 3000
SHORT, LONG, FLUSH & OAK SUMMIT PANELS

SIZE	DRAWN BY	RLR	DATE	11/11/13	DRAWING NUMBER
B	CHECKED BY		DATE		IRC-1216-175-26-G

TOP FIXTURE REINFORCEMENT ILLUSTRATION



TOP FIXTURE ADDER PIECE



REV	DESCRIPTION OF REVISIONS	DATE	BY

MAX SIZE 16' x 14'
SIZES SUBJECT TO WEIGHT LIMITATIONS
DESIGN LOADS +48.0 PSF -52.0 PSF
LARGE MISSILE IMPACT RESISTANCE

Thomas L. Shelmerdine, PE (TX PE #85829)
Structural Solutions, PA (TX Firm #F-004063)

TX

5921-G W. Friendly Ave., Greensboro, NC 27410

TABLE 1

DOOR HEIGHT	SECTION HEIGHTS							
	Btm	#2	#3	#4	#5	#6	#7	#8
14' 0"	21"	21"	21"	21"	21"	21"	21"	21"
13' 6"	21"	21"	21"	21"	21"	18"	18"	21"
13' 0"	21"	21"	21"	18"	18"	18"	18"	21"
12' 6"	21"	18"	18"	18"	18"	18"	18"	21"
12' 0"	21"	21"	21"	21"	21"	18"	21"	
11' 6"	21"	21"	21"	18"	18"	18"	21"	
11' 0"	21"	18"	18"	18"	18"	18"	21"	
10' 6"	21"	21"	21"	21"	21"	21"		
10' 0"	21"	21"	21"	18"	18"	21"		
9' 6"	21"	18"	18"	18"	18"	21"		
9' 0"	18"	18"	18"	18"	18"	18"		
8' 6"	21"	21"	21"	18"	21"			
8' 0"	21"	18"	18"	18"	21"			
7' 6"	18"	18"	18"	18"	18"			
7' 0"	21"	21"	21"	21"				
6' 6"	21"	18"	18"	21"				

TABLE 3

Section Width (ft)	Panel Type	Center Stile Locations (Measured from Left Edge)			
		1st (in)	2st (in)	3rd (in)	4th (in)
10' 0	Short	48.41	71.59		
10' 2	Short	49.32	72.68		
10' 4	Short	50.23	73.68		
10' 6	Short	50.84	75.17		
10' 8	Short	51.84	76.17		
10' 10	Short	52.50	77.50		
11' 0	Short	53.50	78.50		
11' 0	Long	44.41	87.59		
11' 2	Short	54.20	79.80		
11' 2	Long	45.30	88.70		
11' 4	Short	55.20	80.80		
11' 4	Long	46.30	89.70		
11' 6	Short	56.20	81.80		
11' 6	Long	47.30	90.70		
11' 8	Short	57.20	82.80		
11' 8	Long	47.63	92.38		
11' 10	Short	47.81	94.19		
11' 10	Long	48.30	93.70		
12' 0	Short	48.81	95.19		
12' 0	Long	49.63	94.38		
13' 10	Short	57.16	82.94	108.71	
14' 0	Short	57.76	83.94	110.11	
14' 2	Short	58.85	84.94	111.41	
14' 4	Short	59.16	85.94	112.71	
14' 6	Short	59.86	86.94	114.01	
14' 8	Short	60.56	87.94	115.31	
14' 10	Short	61.26	88.94	116.61	
14' 10	Long	45.60	89.00	132.40	
15' 0	Short	61.94	89.94	117.94	
15' 0	Long	46.60	90.00	133.40	
15' 2	Short	62.66	90.94	119.21	
15' 2	Long	47.60	91.00	134.40	
15' 4	Short	53.60	79.20	104.80	130.40
15' 4	Long	47.25	92.00	136.75	
15' 6	Short	46.62	93.00	139.38	
15' 6	Long	47.60	93.00	138.40	
15' 6	Oak Summit	47.42	93.00	138.58	
15' 8	Short	47.62	94.00	140.38	
15' 8	Long	48.60	94.00	139.40	
15' 8	Oak Summit	48.02	94.00	139.98	
15' 10	Short	48.62	95.00	141.38	
15' 10	Long	49.17	95.00	140.83	
15' 10	Oak Summit	48.62	95.00	141.38	
16' 0	Short	49.62	96.00	142.38	
16' 0	Long	50.60	96.00	141.40	
16' 0	Oak Summit	48.42	96.00	143.58	

*CONTACT ENGINEERING FOR SIZES NOT LISTED

TABLE 2

DOOR HEIGHT	TRACK ATTACHMENT														SPLICE	
	A	B	C	D	E	F	G	H	I	J	K	L	M	N		
6' 6"	3"	14"	27"	38"	46"	56"	64"									70"
7'	3"	14"	27"	38"	46"	56"	68"									76"
7' 6"	3"	14"	27"	38"	46"	56"	68"	78"								82"
8'	3"	14"	27"	38"	46"	56"	68"	78"								88"
8' 6"	3"	14"	27"	38"	46"	56"	68"	78"	88"							94"
9'	3"	14"	27"	38"	46"	56"	68"	78"	88"							100"
9' 6"	3"	14"	27"	38"	46"	56"	68"	78"	88"	98"						106"
10'	3"	14"	27"	38"	46"	56"	68"	78"	88"	100"						112"
10' 6"	3"	14"	27"	38"	46"	56"	68"	78"	88"	100"	110"					118"
11'	3"	14"	27"	38"	46"	56"	68"	78"	88"	100"	110"					124"
11' 6"	3"	14"	27"	38"	46"	56"	68"	78"	88"	100"	110"	120"				130"
12'	3"	14"	27"	38"	46"	56"	68"	78"	88"	100"	110"	122"				136"
12' 6"	3"	14"	27"	38"	46"	56"	68"	78"	88"	100"	109"	122"	132"			142"
13'	3"	14"	27"	38"	46"	56"	68"	78"	88"	100"	114"	122"	134"			148"
13' 6"	3"	14"	27"	38"	46"	56"	68"	78"	88"	100"	109"	122"	134"	144"		154"
14'	3"	14"	27"	38"	46"	56"	68"	78"	88"	100"	114"	122"	134"	146"		160"

ALL TRACK ATTACHMENT SPACING +/-2" ALLOWED WITH SYP NO. 2 OR BETTER ONLY

Amarr

165 CARRIAGE COURT WINSTON-SALEM, N.C. 27105 WWW.AMARR.COM

MODEL #1200 HERITAGE 3000
MODEL #1200 OAK SUMMIT 3000
SHORT, LONG, FLUSH & OAK SUMMIT PANELS

SIZE	DRAWN BY	RLR	DATE	11/11/13	DRAWING NUMBER
B	CHECKED BY		DATE		IRC-1216-175-26-G

SHEET 4 OF 4