

(1) 20 GA STRUT AT THE TOP OF TOP SECTION ATTACHED W/ (2) 1/4" X 3/4" HEX HEAD SCREWS AT EACH END STILE AND CENTER STILE LOCATIONS

3-1/4" X 20 GA CONTINUOUS BACKER PLATE BEHIND BACK SKIN AT TOP AND BOTTOM OF EACH SECTION

(1) 20 GA STRUT STACKED ON THE HINGES OF EACH INTERMEDIATE SECTION ATTACHED W/ (2) 1/4" X 3/4" HEX HEAD SCREWS AT EACH END STILE, AND CENTER STILE

14GA. (MIN.) CENTER HINGE ATTACHED W/ A TOTAL OF (5) 1/4" X 3/4" HEX HEAD SCREWS

3-1/4" X 20 GA CONTINUOUS BACKER PLATE BEHIND BACK SKIN AT TOP AND BOTTOM OF EACH SECTION

12 GA. (MIN.) GALV. COMMERCIAL TOP ROLLER BRACKET ATTACHED W/(4) 1/4" X 3/4" HEX HEAD SCREWS

ADJUSTABLE SLIDE BRACKET ATTACHED W/ (2) 5/16" X 3/4" CARRIAGE BOLTS AND NUT

2"-10 BALL STEEL 7" STEM ROLLERS (MIN) W/ 7/16" RETAINERS FOR NON-THREADED SHAFTS

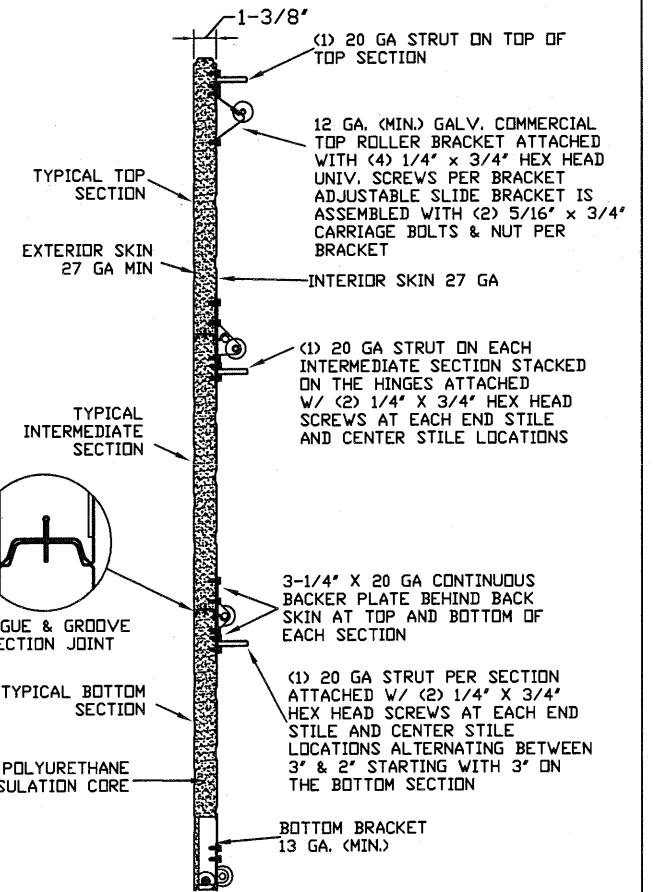
TYPICAL TOP FIXTURES
N.T.S.

1

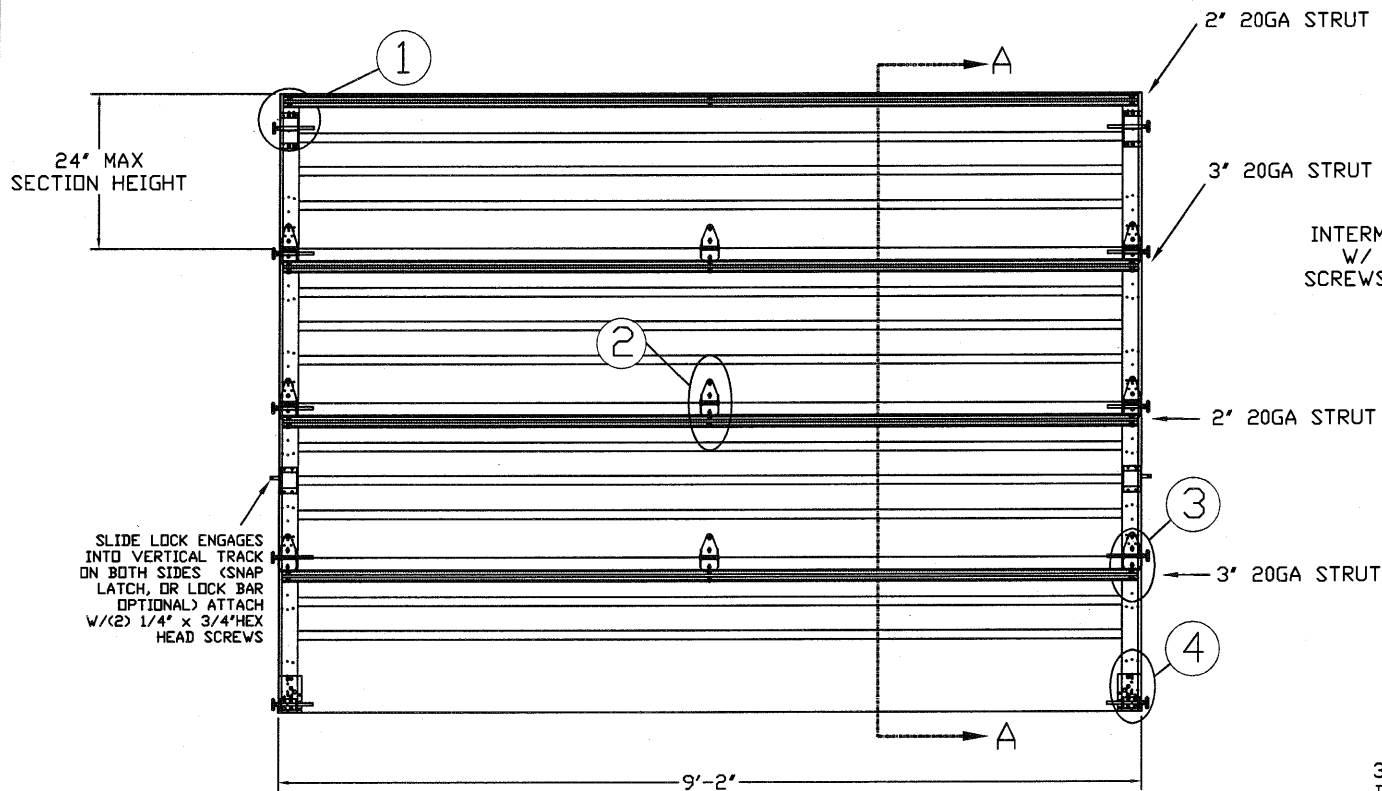
TYPICAL CENTER HINGE
N.T.S.

2

LARGE MISSILE IMPACT RESISTANCE



SECTION A-A (SIDE VIEW)
N.T.S.



INSIDE ELEVATION
N.T.S.

2"-10 BALL STEEL 7" STEM ROLLERS (MIN) W/ 7/16" RETAINERS FOR NON-THREADED SHAFTS

(1) 20 GA STRUT ON EACH INTERMEDIATE SECTION ATTACHED W/ (2) 1/4" X 3/4" HEX HEAD SCREWS AT EACH END STILE, AND CENTER STILE LOCATIONS

14 GA. (MIN.) END HINGE ROLLER CARRIER ATTACHED W/ (5) 1/4" X 3/4" HEX HEAD SCREWS

3-1/4" X 20 GA CONTINUOUS BACKER PLATE BEHIND BACK SKIN AT TOP AND BOTTOM OF EACH SECTION

TYPICAL END HINGE
N.T.S.

3

3-1/4" X 20 GA CONTINUOUS BACKER PLATE BEHIND BACK SKIN AT TOP AND BOTTOM OF EACH SECTION

BB-4 BOTTOM BRACKET 13 GA. (MIN.) ATTACHED W/ A TOTAL OF (7) 1/4" X 3/4" HEX HEAD SCREWS

2"-10 BALL STEEL 7" STEM ROLLERS (MIN) W/ 7/16" RETAINERS FOR NON-THREADED SHAFTS

TYPICAL BOTTOM BRACKET
N.T.S.

4

19 GA. GALV. STEEL END STILE ATTACHED TO DOORS SKIN WITH (2) #8 X 1/2" SCREWS PER STILE

JAMB SEAL OPTIONAL

5/16" X 1 5/8" LAG SCREW (1) PER JAMB BRACKET

(1) 1/4"-20 X 5/8" TRACK SPLICE BOLT AND NUT PER JAMB BRACKET

INTERMEDIATE HINGES 14GA. (MIN.)

2"-10 BALL STEEL 7" STEM ROLLERS (MIN) W/ 7/16" RETAINER CLIPS FOR NON-THREADED SHAFTS

2" GALV. STEEL TRACK THICKNESS .063" (MIN.)

TRACK MOUNTING DETAIL
N.T.S.

EDGE OF DOOR 1" OVERLAP ON EACH SIDE

THE METHOD OF TESTING WAS IN SUBSTANTIAL CONFORMANCE WITH THE PROCEDURES DESCRIBED IN ANSI/DASMA 115, ASTM E1886, ASTM E1996 AND ASTM F588. THE PRESSURES SHOWN ON THE DRAWINGS WERE CALCULATED USING ASCE 7-98/02/05 WITH THE FOLLOWING PARAMETERS (5 FEET OF DOOR WIDTH IN END ZONE, ROOF SLOPE 10° OR LESS, I=1.0):

WIND SPEED (MPH)	150	137	130	124	119
EXPOSURE LEVEL	B	C	C	D	D
MEAN ROOF HEIGHT	30'	15'	25'	15'	25'

REV	DESCRIPTION OF REVISIONS	DATE	BY
A	CHANGED STRUT CONFIGURATION CHANGE COMPANY NAME TO ENTREMATIC PRESSURE CHANGE	03/03/15	RWS

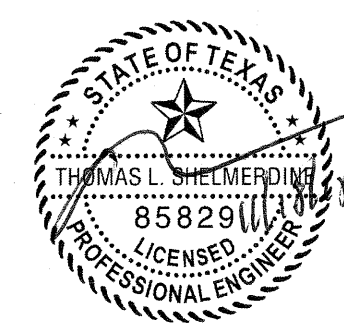
MAX SIZE
9'2" x 14'

DESIGN LOADS
+32.6 PSF
-38.3 PSF

TEST LOADS
+48.9 PSF
-57.45 PSF

LARGE MISSILE
IMPACT
RESISTANCE

Thomas L. Shelmerdine, PE (TX PE #85829)
Structural Solutions, PA (TX Firm #F-004063)



5921-G W. Friendly Ave., Greensboro, NC 27410

ENTREMATIC

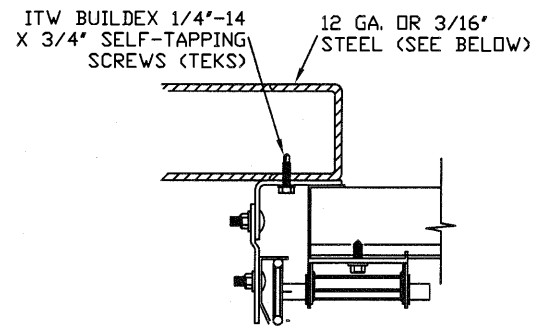
165 CARRIAGE COURT WINSTON-SALEM, N.C. 27105

AMARR MODEL 1350 (27GA)
AMARR MODEL 2700 (27GA)

SIZE	DRAWN BY	RS	DATE	03/03/15	DRAWING NUMBER
B	CHECKED BY	RLR	DATE	03/03/15	IBC-1309-150-15-1

SHEET 1 OF 3

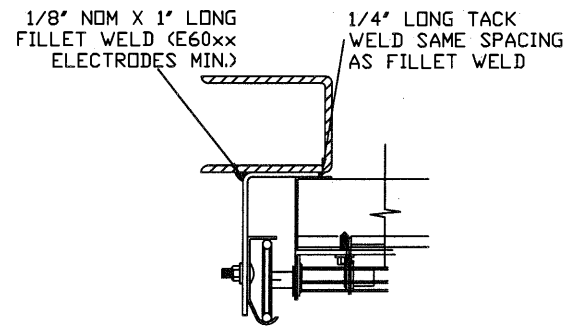
TRACK CONNECTION DIRECTLY TO STRUCTURE OPTIONS



CLIP STYLE REVERSE ANGLE MOUNT SHOWN
BRACKET, CONTINUOUS AND TAPERED ANGLE
MOUNT AVAILABLE

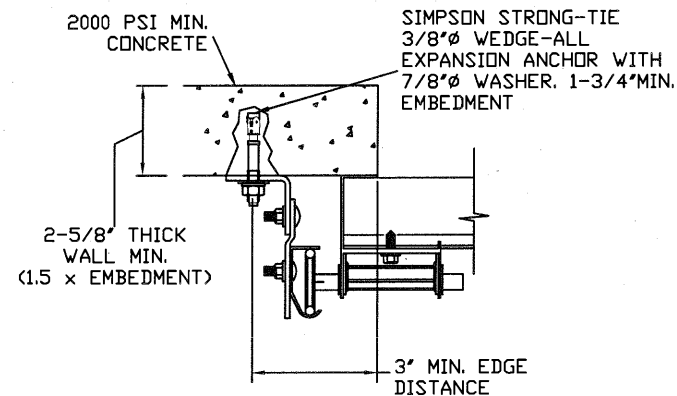
12 GA. STEEL FRAMING
232 LBS./SCREW ALLOWABLE LOAD - 6'
FROM ENDS AND 18" O.C.
REFER TO NOTES: 1, 2 AND 5

3/16" STEEL FRAMING
569 LBS./SCREW ALLOWABLE LOAD - 6'
FROM ENDS AND 24" O.C.
REFER TO NOTES: 1, 2 AND 5



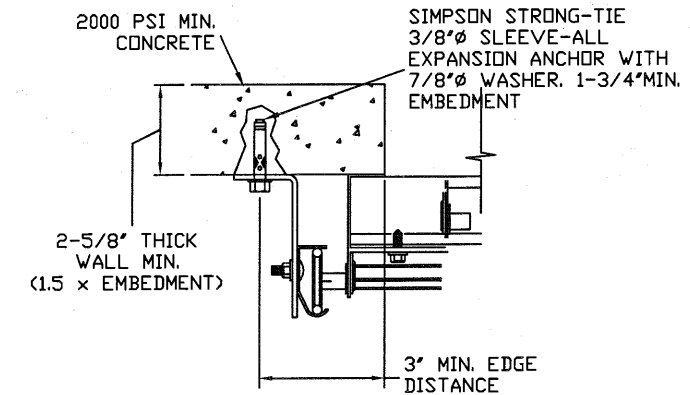
REVERSE ANGLE MOUNT SHOWN
BRACKET, CONTINUOUS AND
TAPERED ANGLE MOUNT AVAILABLE

STEEL FRAMING 12GA OR BETTER
1590 LBS./IN. ALLOWABLE LOAD -
6' FROM ENDS AND 24" O.C.
REFER TO NOTES: 1, 2, 5, 6, 7, 8
AND 9



CLIP STYLE CONTINUOUS ANGLE MOUNT SHOWN
BRACKET, REVERSE AND TAPERED ANGLE MOUNT
AVAILABLE

2000 PSI CONCRETE OR GREATER
351 LBS./EXPANSION ANCHOR ALLOWABLE LOAD -
6' FROM ENDS AND 24" O.C.
REFER TO NOTES: 1, 2, 3, 4 AND 5



CONTINUOUS ANGLE MOUNT SHOWN
BRACKET, CONTINUOUS AND TAPERED ANGLE
MOUNT AVAILABLE

2000 PSI CONCRETE OR GREATER
336 LBS./EXPANSION ANCHOR ALLOWABLE
LOAD - 6' FROM ENDS AND 24" O.C.
REFER TO NOTES: 1, 2, 3, 4 AND 5

SPECIFICATIONS AND NOTES

1. ALL THE LOAD FROM THE DOOR IS TRANSFERRED TO THE VERTICAL TRACK, FROM THE TRACK THE LOAD IS TRANSFERRED TO THE VERTICAL JAMBS. THE HORIZONTAL JAMB OR HEADER RECEIVES NO PORTION OF THE LOAD TRANSFERRED FROM THE DOOR.
2. EACH VERTICAL JAMBS RECEIVES MAXIMUM DESIGN LOADS OF: +149.4 LBS/FT & -175.5 LBS/FT
3. DOOR AND HARDWARE WILL BE DESIGNED, MANUFACTURED AND INSTALLED WITH STANDARDS AS SET FORTH BY DASMA.
4. DOOR SECTIONS SHALL BE 27 GA. MIN. EXTERIOR SKIN ROLLED FORMED, W/ BAKED ON POLYESTER FINISH
5. DOORS UP TO 14'0" HIGH HAVE (1) 3" 20GA STRUT ON BOTTOM SECTION AND ALTERNATING (1) 2" 20GA STRUT AND (1) 3" 20GA STRUT ON EACH INTERMEDIATE SECTION AFTER THAT.
6. SUPPORTING STRUCTURAL ELEMENTS SHALL BE DESIGNED BY A REGISTERED PROFESSIONAL ENGINEER FOR WIND LOADS INDICATED ON THIS DRAWING IN ADDITION TO OTHER LOADINGS.

WOOD JAMB ATTACHMENT TO STRUCTURE (OPTIONAL)

2 X 6 VERTICAL JAMB ATTACHMENT TO WOOD FRAME STRUCTURE

5/16" X 3" LAG SCREWS STARTING 6" FROM ENDS
THEN 24" O.C. (1 1/2" EMBEDMENT)

2 X 6 VERTICAL JAMB ATTACHMENT TO 2,000 PSI CONCRETE

HILTI KWIK BOLT 3/8" X 4" STARTING 6" FROM ENDS
THEN 24" O.C. (2 1/2" EMBEDMENT)
HILTI SLEEVE ANCHOR 3/8" X 2-3/4" STARTING 6" FROM ENDS
THEN 24" O.C. (1 1/4" EMBEDMENT)
ITW/RAMSET REDHEAD (TRU-BOLT) 3/8" X 4" STARTING 6" FROM ENDS
THEN 24" O.C. (2 1/2" EMBEDMENT)

2 X 6 VERTICAL JAMB ATTACHMENT TO HOLLOW C-90 BLOCK

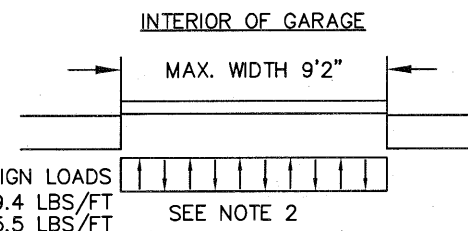
SIMPSON 1/4" X 3" TITEN SCREWS STARTING 6" FROM ENDS,
USE PAIRS OF FASTENERS (3" APART)
AT 24" O.C. (1 1/2" EMBEDMENT)
HILTI 1/4" X 2-3/4" KWIK-CON II+ SCREWS STARTING 6" FROM ENDS,
USE PAIRS OF FASTENERS (3" APART) AT 24" O.C. (1 1/4" EMBEDMENT)

2 X 6 VERTICAL JAMB ATTACHMENT TO GROUTED C-90 BLOCK (2000 PSI GROUT)

HILTI SLEEVE ANCHOR 3/8" X 2-3/4" STARTING 6" FROM ENDS
THEN 24" O.C. (1 1/4" EMBEDMENT)
(OR, USE FASTENERS FOR HOLLOW C-90 BLOCK)
*LAGS AND BOLTS CAN BE COUNTERSUNK TO PROVIDE A FLUSH MOUNTING SURFACE.
*PREPARATION OF WOOD JAMBS BY OTHERS

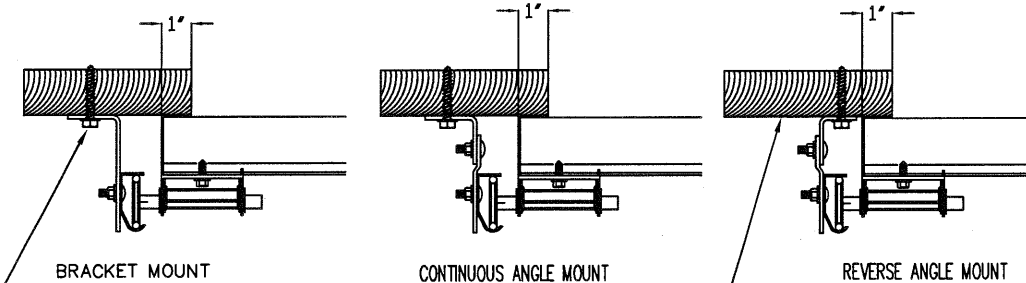
NOTES:

1. ANCHORS TO BE EVENLY SPACED BETWEEN THE HEADER AND FLOOR.
2. FIRST (BOTTOM) ANCHOR STARTING AT NO MORE THAN HALF OF THE MAXIMUM ON-CENTER DISTANCE. HIGHEST ANCHOR INSTALLED AT LEAST AS HIGH AS THE DOOR OPENING.
3. MIN. EDGE DISTANCE OF 3" REQUIRED.
4. USE WASHERS PROVIDED BY THE ANCHOR MANUFACTURER.
5. SUPPORTING STRUCTURAL ELEMENTS SHALL BE DESIGNED BY A REGISTERED PROFESSIONAL ENGINEER FOR WIND LOADS IN ADDITION TO OTHER LOADS.
6. MOST GARAGE DOOR TRACK IS GALVANIZED STEEL. USE ALL NECESSARY PRECAUTIONS WHEN WELDING GALVANIZED STEEL.
7. ALL WELDS SHOULD BE PERFORMED BY A CERTIFIED WELDER OR INSPECTED BY A CERTIFIED WELDING INSPECTOR TO VERIFY THE INTEGRITY OF THE WELD.
8. FILLET WELDS TO HAVE A STRAIGHT OR CONVEX FACE SURFACE.
9. TACK WELD TOE OF ANGLE AT SAME SPACING TO PREVENT ROTATION OF TRACK ANGLE.



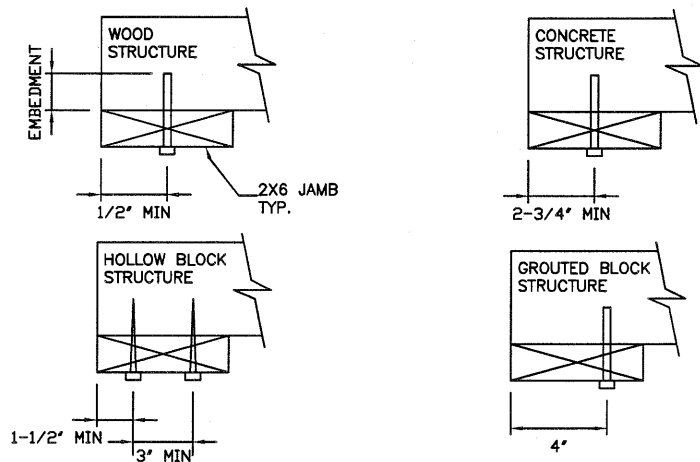
TRACK CONNECTION TO WOOD JAMB OPTIONS

FOR LAG SCREWS & BRACKET SPACING SEE PAGE 4 FOR TRACK CONFIGURATION DETAIL



5/16" x 1 5/8" LAG SCREW (1)
PER JAMB BRACKET (1-1/2"
EMBEDMENT MINIMUM) (TYP.)

2x6 WOOD JAMB SYP OR SPF
(NO.2) OR BETTER (TYP.)



REV	DESCRIPTION OF REVISIONS	DATE	BY
A	CHANGED STRUT CONFIGURATION CHANGE COMPANY NAME TO ENTRE/MATIC PRESSURE CHANGE	03/03/15	RWS

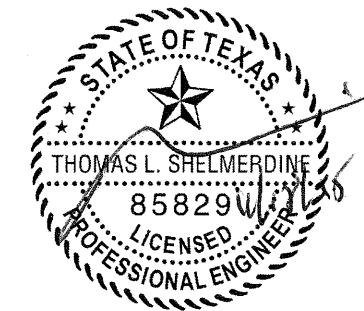
MAX SIZE
9'2" x 14'

DESIGN LOADS
+32.6 PSF
-38.3 PSF

TEST LOADS
+48.9 PSF
-57.45 PSF

LARGE MISSILE
IMPACT
RESISTANCE

Thomas L. Shelmerdine, PE (TX PE #85829)
Structural Solutions, PA (TX Firm #004063)



TX

5921-G.W. Friendly Ave., Greensboro, NC 27410

ENTRE/MATIC

165 CARRIAGE COURT WINSTON-SALEM, N.C. 27105

AMARR MODEL 1350 (27GA)
AMARR MODEL 2700 (27GA)

SIZE	DRAWN BY	RS	DATE	03/03/15	DRAWING NUMBER
B	CHECKED BY	RLR	DATE	03/03/15	IBC-1309-150-15-1

SHEET 2 OF 3

TABLE 1

Section Width (ft)	Center Stile Locations	
	1st (in)	
6' 0"	36.000	
7' 0"	42.000	
7' 2"	43.000	
7' 4"	44.000	
7' 6"	45.000	
7' 8"	46.000	
7' 10"	47.000	
8' 0"	48.000	
8' 2"	49.000	
8' 4"	50.000	
8' 6"	51.000	
8' 8"	52.000	
8' 10"	53.000	
9' 0"	54.000	
9' 2"	55.000	

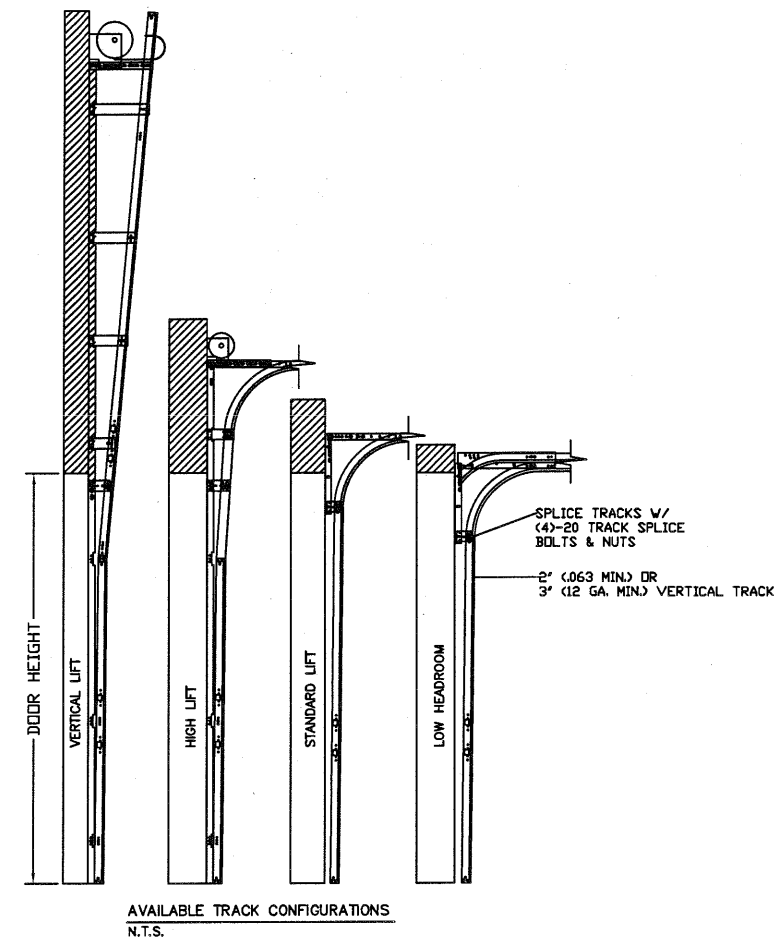
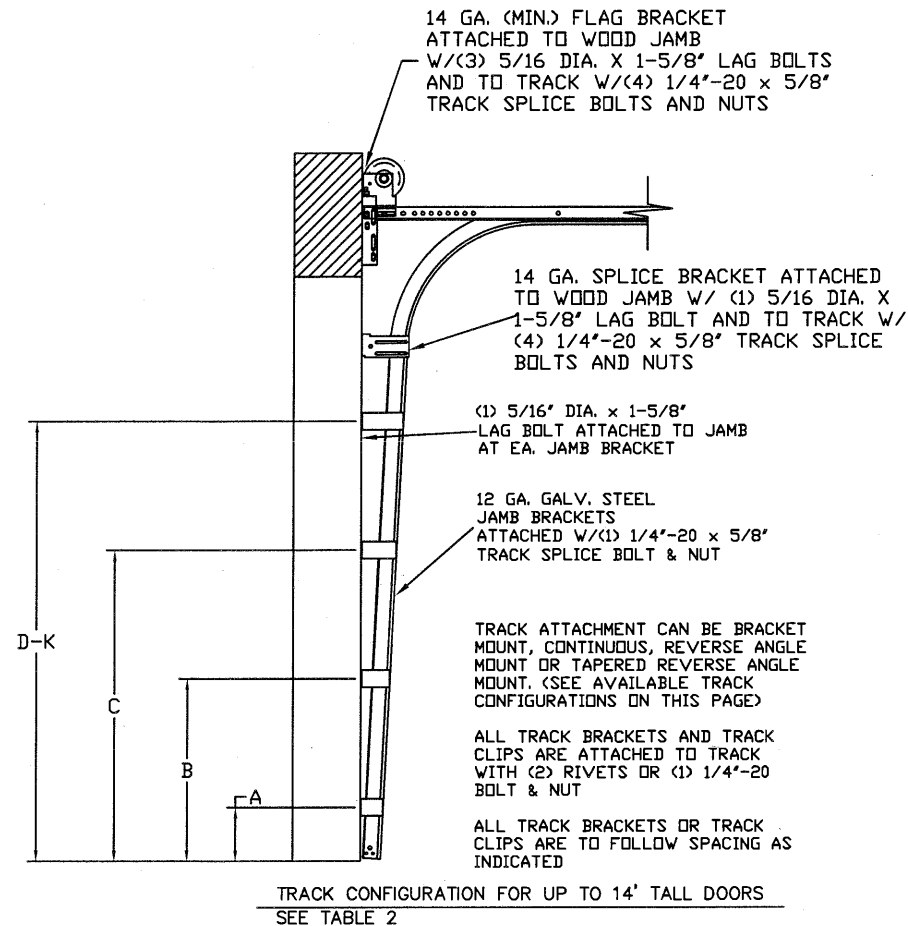


TABLE 2

DOOR HEIGHT	TRACK ATTACHMENT											TYPICAL SPLICE
	A	B	C	D	E	F	G	H	I	J	K	
7' 0"	10.0"	34"	58"									76"
7' 6"	10.0"	34"	58"									82"
8' 0"	10.0"	34"	58"									88"
8' 6"	10.0"	34"	58"	82"								94"
9' 0"	10.0"	34"	58"	82"								100"
9' 6"	10.0"	34"	58"	82"								106"
10' 0"	10.0"	34"	58"	82"								112"
11' 0"	10.0"	34"	58"	82"	106"							124"
12' 0"	10.0"	34"	58"	82"	106"							136"
13' 0"	10.0"	34"	58"	82"	106"	130"						148"
14' 0"	10.0"	34"	58"	82"	106"	130"						160"

ALL TRACK ATTACHMENTS +/- 2" ALLOWED USING SYP OR SPF NO.2 OR BETTER ONLY.

REV	DESCRIPTION OF REVISIONS	DATE	BY
A	CHANGED STRUT CONFIGURATION CHANGE COMPANY NAME TO ENTREMATI PRESSURE CHANGE	03/03/15	RWS

MAX SIZE
9'2" x 14'

DESIGN LOADS
+32.6 PSF
-38.3 PSF

TEST LOADS
+48.9 PSF
-57.45 PSF

LARGE MISSILE
IMPACT
RESISTANCE

Thomas L. Shelmerdine, PE (TX PE #85829)
Structural Solutions, PA (TX Firm #F-004063)

TX

5921-G W. Friendly Ave., Greensboro, NC 27410

ENTREMATI

165 CARRIAGE COURT WINSTON-SALEM, NC. 27105

AMARR MODEL 1350 (27GA)
AMARR MODEL 2700 (27GA)

SIZE	DRAWN BY	RS	DATE	03/03/15	DRAWING NUMBER
B	CHECKED BY	RLR	DATE	03/03/15	IBC-1309-150-15-1

SHEET 3 OF 3