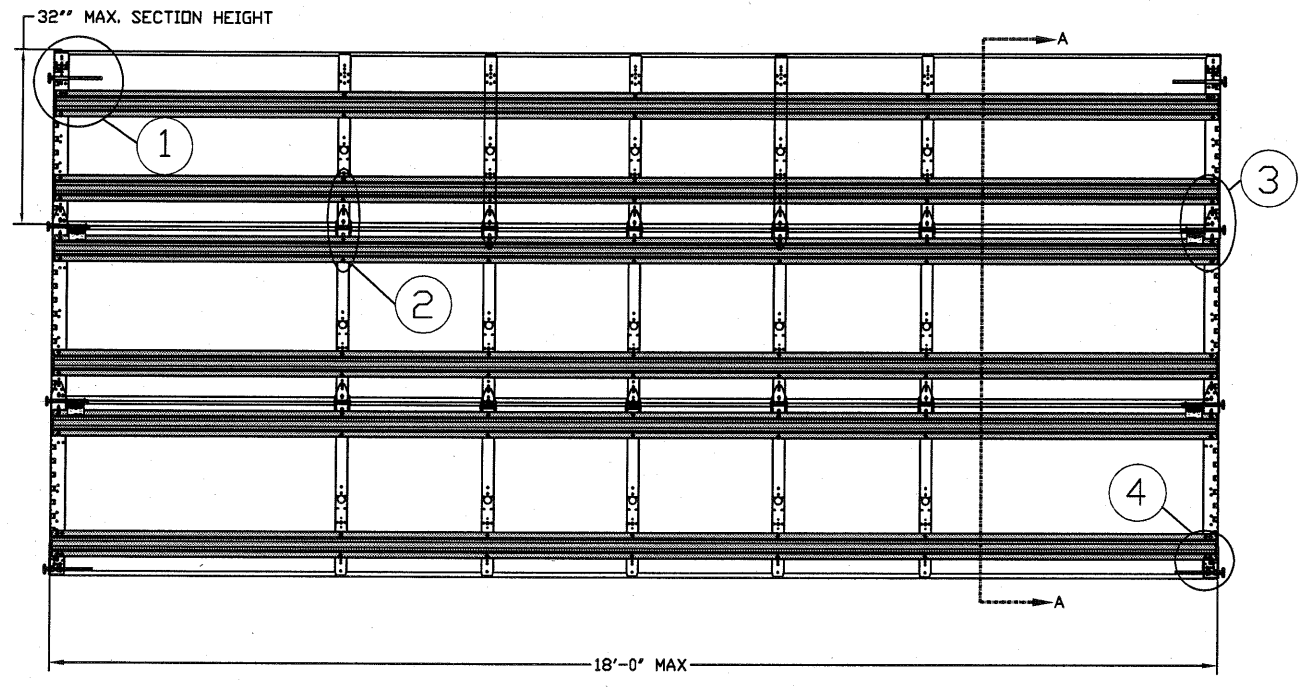
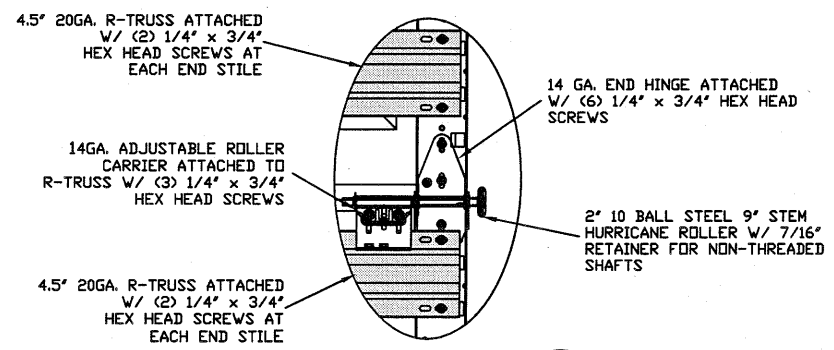


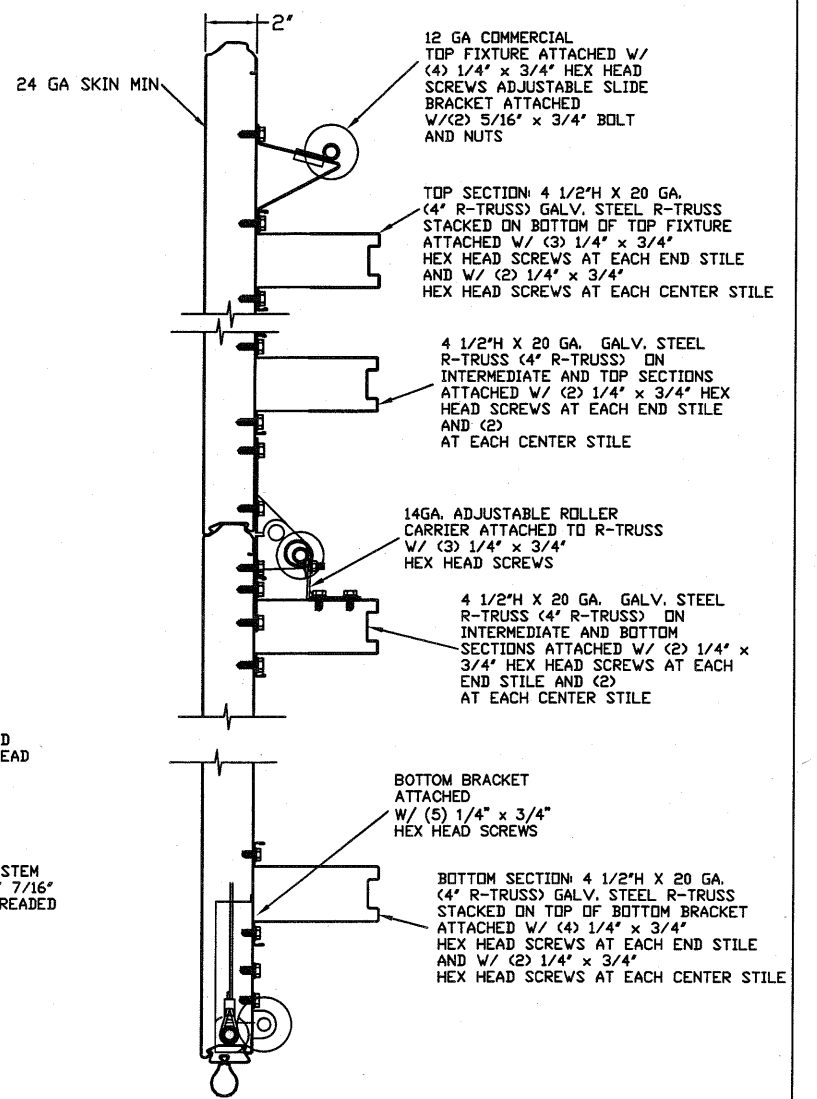
TYPICAL TOP FIXTURES
N.T.S.



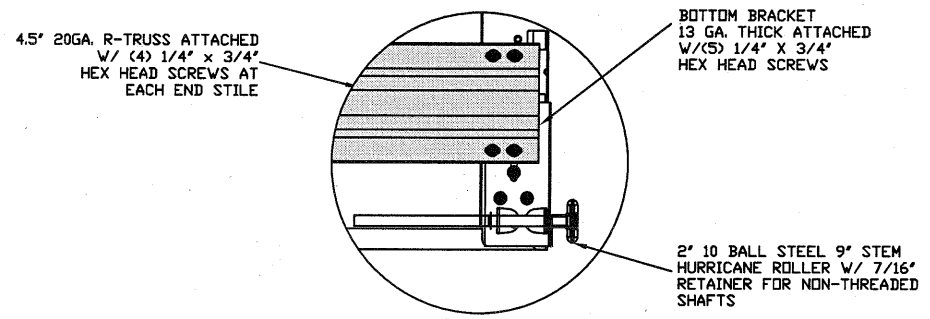
TYPICAL CENTER HINGE
N.T.S.



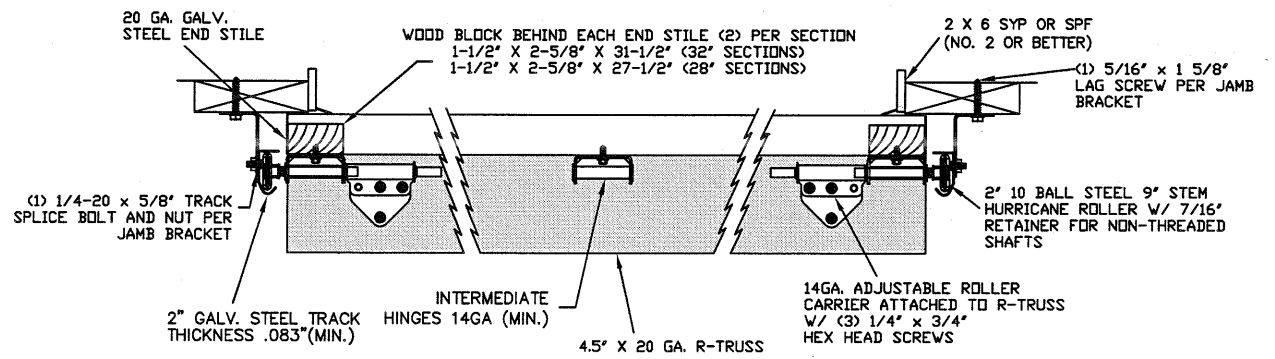
TYPICAL END HINGE
N.T.S.



SECTION A-A (SIDE VIEW)
N.T.S.



TYPICAL BOTTOM BRACKET
N.T.S.



TRACK MOUNTING DETAIL
N.T.S.

THE METHOD OF TESTING WAS IN SUBSTANTIAL CONFORMANCE WITH THE PROCEDURE DESCRIBED IN ASTM E1886, E1996, F588 AND DASMA 108, 115. THE PRESSURES SHOWN ON THE DRAWINGS WERE CALCULATED USING ASCE 7-16 WITH THE FOLLOWING PARAMETERS (5 FEET OF DOOR WIDTH IN THE END ZONE, ROOF AT ANY SLOPE):

WIND SPEED (MPH)	168	152	145	138	133
EXPOSURE LEVEL	B	C	C	D	D
MEAN ROOF HEIGHT	30'	15'	25'	15'	25'

REV	DESCRIPTION OF REVISIONS	DATE	BY

MAX SIZE
18' x 8'
DESIGN LOADS
+25.1 PSF
-28.4 PSF
TEST LOADS
(1.5 x DESIGN LOADS)
+37.7 PSF
-42.6 PSF

Thomas L. Shelmerdine, PE (TX PE #85829)
Structural Solutions, PA (TX Firm #F-004063)

TX
5921-G W. Friendly Ave., Greensboro, NC 27410

MODEL #500 AMARR CLASSICA 1000, 2000

SIZE	DRAWN BY	DLJ	DATE	11/20/2020	DRAWING NUMBER
B	CHECKED BY	DRC	DATE	12/02/2020	IRC-5318-130-24-1

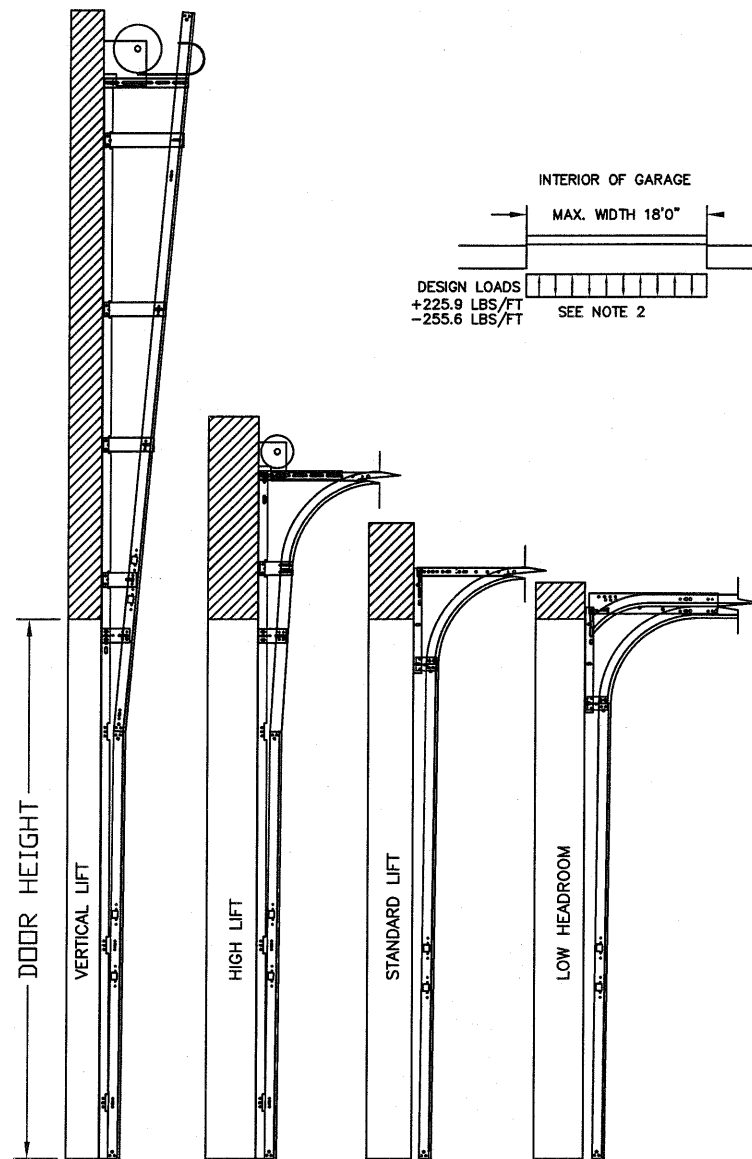
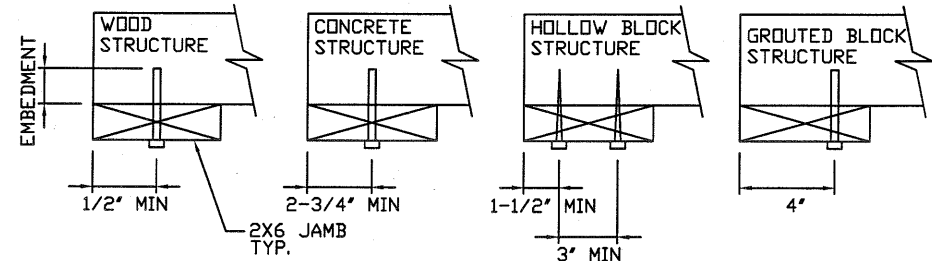
AMARR COMPANY
165 CARRIAGE COURT WINSTON-SALEM, N.C. 27105

SHEET 1 OF 2

WOOD JAMB ATTACHMENT TO STRUCTURE

- 2 X 6 VERTICAL JAMB ATTACHMENT TO WOOD FRAME STRUCTURE**
 5/16" X 3" LAG SCREWS STARTING 6" FROM ENDS THEN 20" O.C. (1 1/2" EMBEDMENT)
- 2 X 6 VERTICAL JAMB ATTACHMENT TO 2,000 PSI CONCRETE**
 HILTI KWIK BOLT 3/8" X 4" STARTING 6" FROM ENDS THEN 24" O.C. (2 1/2" EMBEDMENT)
 HILTI SLEEVE ANCHOR 3/8" X 2-3/4" STARTING 6" FROM ENDS THEN 18" O.C. (1 1/4" EMBEDMENT)
 ITW/RAMSET REDHEAD (TRU-BOLT) 3/8" X 4" STARTING 6" FROM ENDS THEN 24" O.C. (2 1/2" EMBEDMENT)
- 2 X 6 VERTICAL JAMB ATTACHMENT TO HOLLOW C-90 BLOCK**
 SIMPSON 1/4" X 3" TITEN SCREWS STARTING 6" FROM ENDS, USE PAIRS OF FASTENERS (3" APART) AT 8" O.C. (1 1/2" EMBEDMENT)
- 2 X 6 VERTICAL JAMB ATTACHMENT TO GROUTED C-90 BLOCK (2000 PSI GROUT)**
 HILTI SLEEVE ANCHOR 3/8" X 2-3/4" STARTING 6" FROM ENDS THEN 22" O.C. (1 1/4" EMBEDMENT) (OR, USE FASTENERS FOR HOLLOW C-90 BLOCK)

*LAGS AND BOLTS CAN BE COUNTERSUNK TO PROVIDE A FLUSH MOUNTING SURFACE.
 *PREPARATION OF WOOD JAMBS BY OTHERS

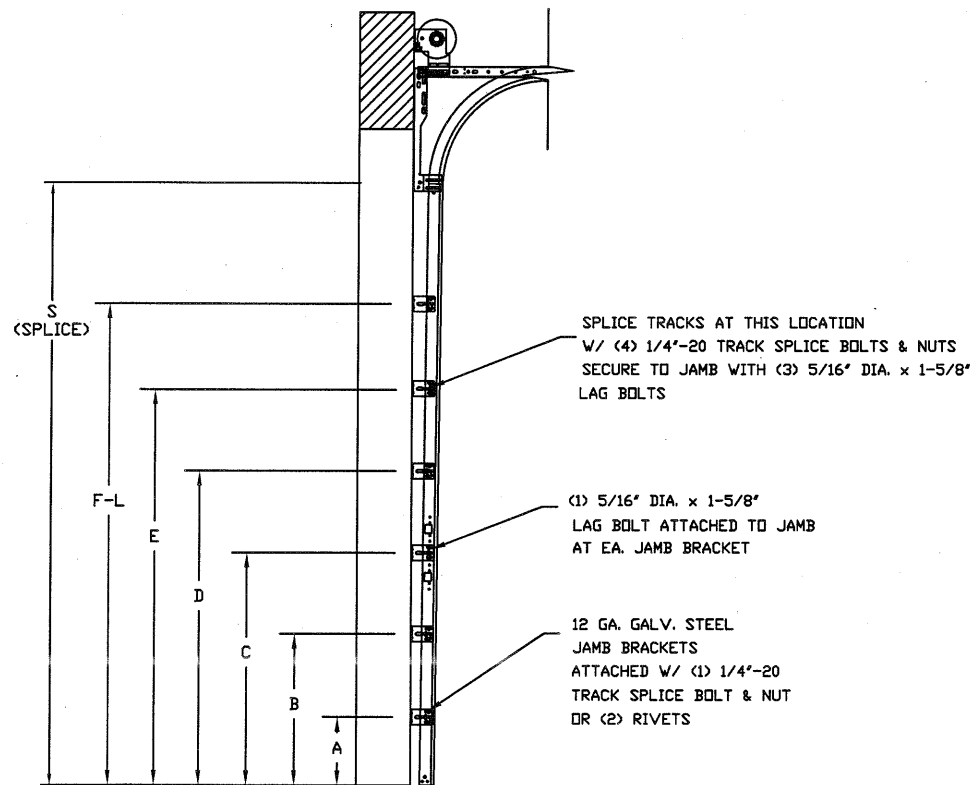


AVAILABLE TRACK CONFIGURATIONS
 N.T.S.

- SPECIFICATIONS AND NOTES**
- ALL THE LOAD FROM THE DOOR IS TRANSFERRED TO THE VERTICAL TRACK, FROM THE TRACK THE LOAD IS TRANSFERRED TO THE VERTICAL JAMBS. THE HORIZONTAL JAMB OR HEADER RECEIVES NO PORTION OF THE LOAD TRANSFERRED FROM THE DOOR.
 - EACH VERTICAL JAMBS RECEIVES MAXIMUM DESIGN LOADS OF: +225.9 LBS/FT & -255.6 LBS/FT
 - DOORS AND HARDWARE WILL BE DESIGNED, MANUFACTURED AND INSTALLED WITH STANDARDS AS SET FORTH BY DASHA.
 - DOOR SECTIONS SHALL BE 24 GA. MIN. (.022") ROLLED FORMED LIGHT COMMERCIAL QUALITY
 - SUPPORTING STRUCTURAL ELEMENTS SHALL BE DESIGNED BY A REGISTERED PROFESSIONAL ENGINEER FOR WIND LOADS INDICATED ON THIS DRAWING IN ADDITION TO OTHER LOADINGS.
 - DOOR IS MANUFACTURED AND TESTED IN ACCORDANCE WITH THE 2018 IRC/IBC

TABLE 2

Section	Center Stile Locations (Measured from Left Edge)						
	Width (ft)	1st (in)	2st (in)	3rd (in)	4th (in)	5th (in)	6th (in)
16' 2	24.63	48.75	72.880	97.00	121.13	145.25	169.38
16' 4	24.63	49.08	73.540	98.00	122.46	146.92	171.38
16' 6	24.63	49.42	74.210	99.00	123.79	148.59	173.38
16' 8	24.88	49.92	74.960	100.00	125.04	150.09	175.13
16' 10	25.13	50.42	75.710	101.00	126.29	151.59	176.88
17' 0	25.38	50.92	76.460	102.00	127.54	153.09	178.63
17' 2	25.63	51.42	77.210	103.00	128.79	154.59	180.38
17' 4	25.88	51.92	77.960	104.00	130.04	156.09	182.13
17' 6	26.13	52.42	78.710	105.00	131.29	157.59	183.88
17' 8	26.38	52.92	79.460	106.00	132.54	159.09	185.63
17' 10	26.63	53.42	80.210	107.00	133.79	160.59	187.38
18' 0	26.88	53.92	80.960	108.00	135.04	162.09	189.13



TRACK CONFIGURATION FOR 8' TALL DOORS
 N.T.S. SEE TABLE 1 FOR LOCATIONS

TABLE 1

DOOR HEIGHT	TRACK ATTACHMENT												TYPICAL SPLICE	
	A	B	C	D	E	F	G	H	I	J	K	L		
7' 0"	10"	22"	34"	46"	58"									76"
7' 6"	10"	22"	34"	46"	58"	70"								82"
8' 0"	10"	22"	34"	46"	58"	70"								88"
8' 6"	10"	22"	34"	46"	58"	70"	82"							94"
9' 0"	10"	22"	34"	46"	58"	70"	82"							100"
9' 6"	10"	22"	34"	46"	58"	70"	82"	94"						106"
10' 0"	10"	22"	34"	46"	58"	70"	82"	94"						112"
11' 0"	10"	22"	34"	46"	58"	70"	82"	94"	106"					124"
12' 0"	10"	22"	34"	46"	58"	70"	82"	94"	106"	118"				136"
13' 0"	10"	22"	34"	46"	58"	70"	82"	94"	106"	118"	130"			148"
14' 0"	10"	22"	34"	46"	58"	70"	82"	94"	106"	118"	130"	142"		160"

ALL TRACK AND ATTACHMENT SPACING +/- 2" ALLOWED WITH SYP OR SPF NO. 2 OR BETTER ONLY

TABLE 3

SECTION	STRUT SIZE
TOP	4.5"
	4.5"
5TH	4.5"
	4.5"
4TH	4.5"
	4.5"
3RD	4.5"
	4.5"
2ND	4.5"
	4.5"
BOTTOM	4.5"
	4.5"

REV	DESCRIPTION OF REVISIONS	DATE	BY

MAX SIZE 18' x 8'
 DESIGN LOADS +25.1 PSF -28.4 PSF
 TEST LOADS (1.5 x DESIGN LOADS) +37.7 PSF -42.6 PSF

Thomas L. Shelmerdine, PE (TX #85829)
 Structural Solutions, PA (TX Firm #04063)

STATE OF TEXAS
 THOMAS L. SHELMERDINE
 85829
 LICENSED PROFESSIONAL ENGINEER
 TX

5921-G W. Friendly Ave., Greensboro, NC 27410

Amarr

MODEL #500 AMARR CLASSICA 1000, 2000

SIZE B	DRAWN BY DLJ	DATE 11/20/2020	DRAWING NUMBER IRC-5318-130-24
	CHECKED BY DRC	DATE 12/02/2020	

AMARR COMPANY
 165 CARRIAGE COURT WINSTON-SALEM, N.C. 27105

SHEET 2 OF 2