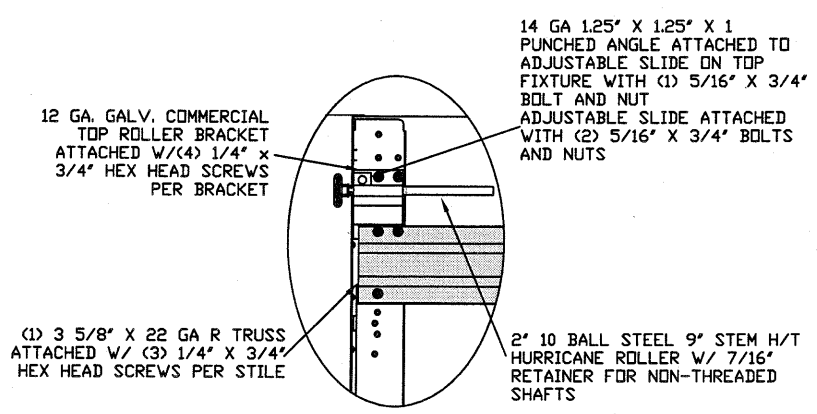
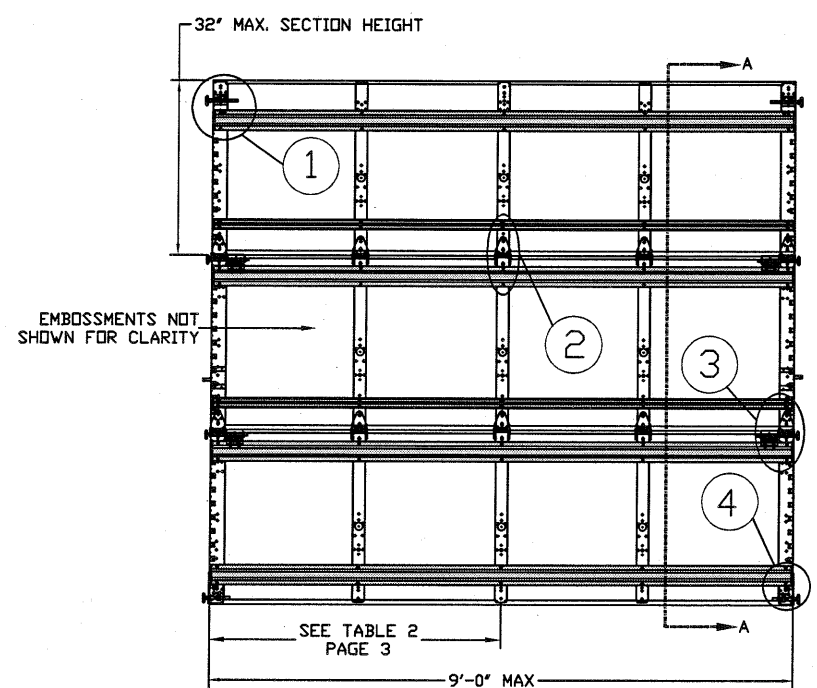


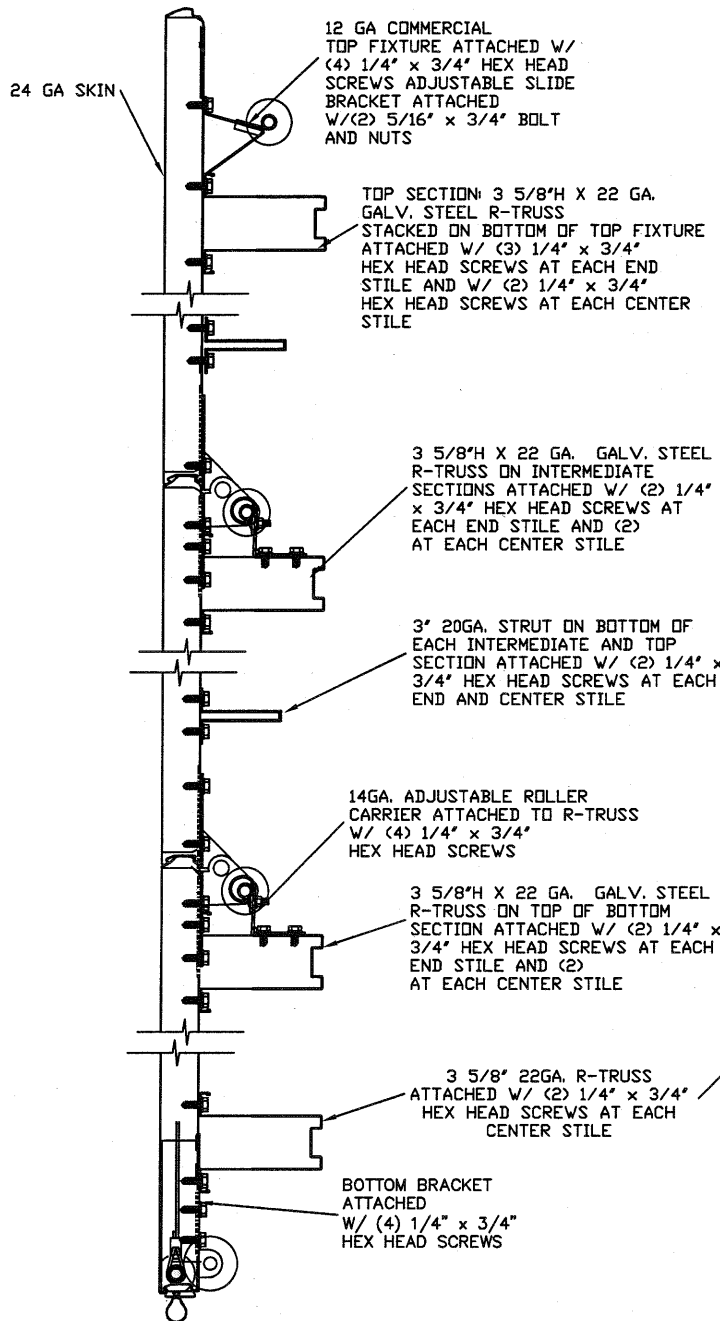
# LARGE MISSILE IMPACT RESISTANT



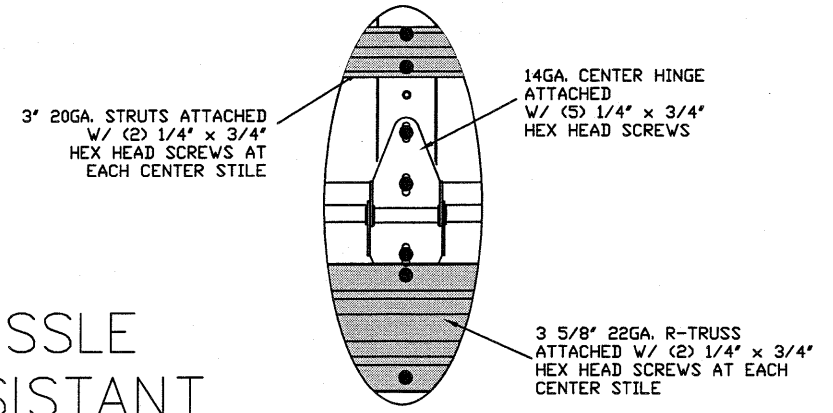
TYPICAL TOP FIXTURES 1  
N.T.S.



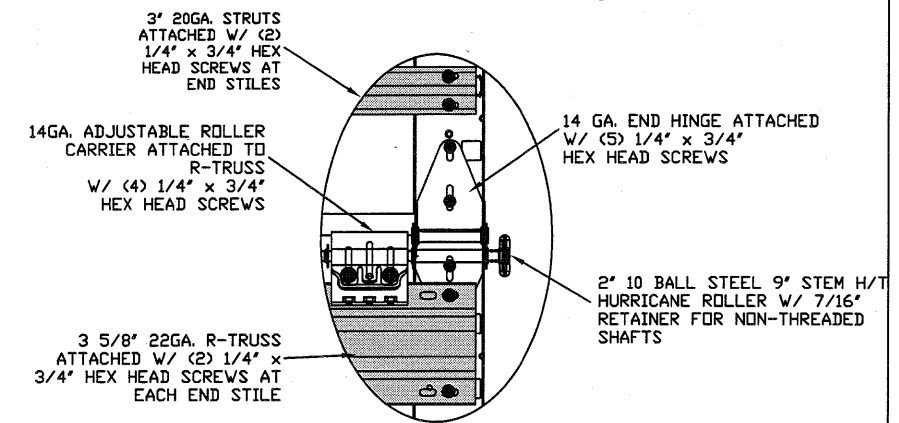
INSIDE ELEVATION  
N.T.S.



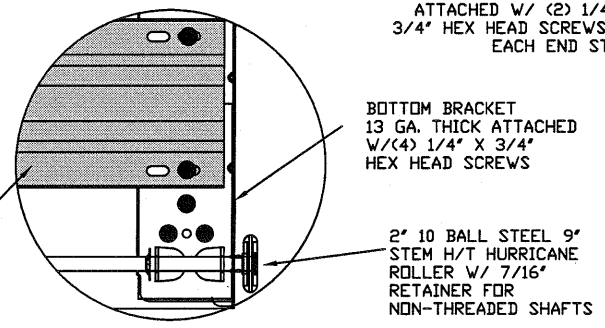
SECTION A-A (SIDE VIEW)  
N.T.S.



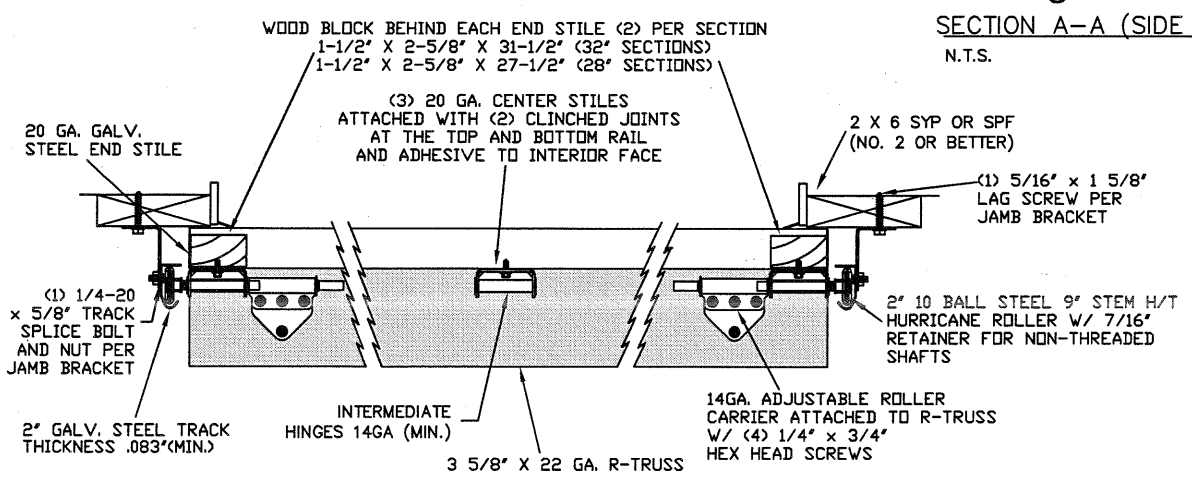
TYPICAL CENTER HINGE 2  
N.T.S.



TYPICAL END HINGE 3  
N.T.S.



TYPICAL BOTTOM BRACKET 4  
N.T.S.



TRACK MOUNTING DETAIL  
N.T.S.

REV	DESCRIPTION OF REVISIONS	DATE	BY

MAX SIZE 9' x 14'

DESIGN LOADS +54.4 PSF -62.0 PSF

TEST LOADS +81.6 PSF -93.0 PSF

LARGE MISSILE IMPACT RESISTANCE

Thomas L. Shelmerdine, PE (TX PE #85829) Structural Solutions, PA (TX Firm #F-004063)

STATE OF TEXAS  
THOMAS L. SHELMERDINE  
85829  
LICENSED PROFESSIONAL ENGINEER

TX

5921-G W. Friendly Ave., Greensboro, NC 27410

THE METHOD OF TESTING WAS IN SUBSTANTIAL CONFORMANCE WITH THE PROCEDURE DESCRIBED IN TAS 201, 202, and 203, ASTM E330, E1886, E1996, F588, AND ANSI/DASMA 108, 115. THE PRESSURES SHOWN ON THE DRAWINGS WERE CALCULATED USING ASCE 7-16 WITH THE FOLLOWING PARAMETERS (5 FEET OF DOOR WIDTH IN THE END ZONE, ROOF AT ANY SLOPE):

WIND SPEED (MPH)	237	215	204	195	187
EXPOSURE LEVEL	B	C	C	D	D
MEAN ROOF HEIGHT	30'	15'	25'	15'	25'

**Amarr**

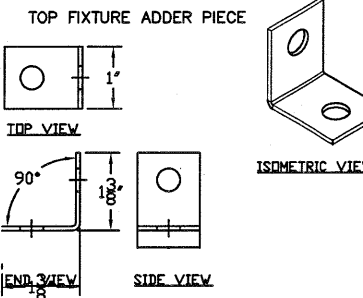
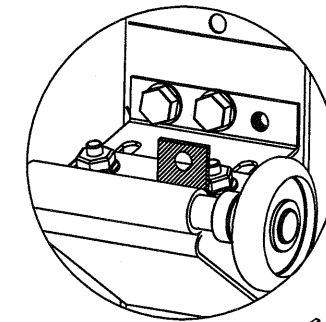
MODEL #500  
CLASSICA 1000, 2000

SIZE	DRAWN BY	DRC	DATE	DRAWING NUMBER
B	DLJ	DLJ	1/18/21	IRC-5309-185-21-1
	CHECKED BY		DATE	
			1/21/21	

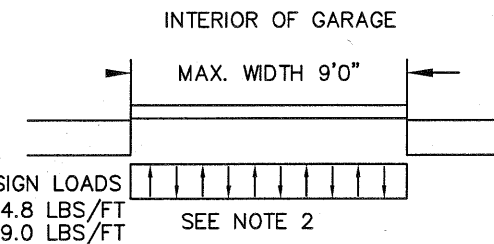
AMARR COMPANY  
165 CARRIAGE COURT WINSTON-SALEM, N.C. 27105

SHEET 1 OF 3

TOP FIXTURE REINFORCEMENT ILLUSTRATION

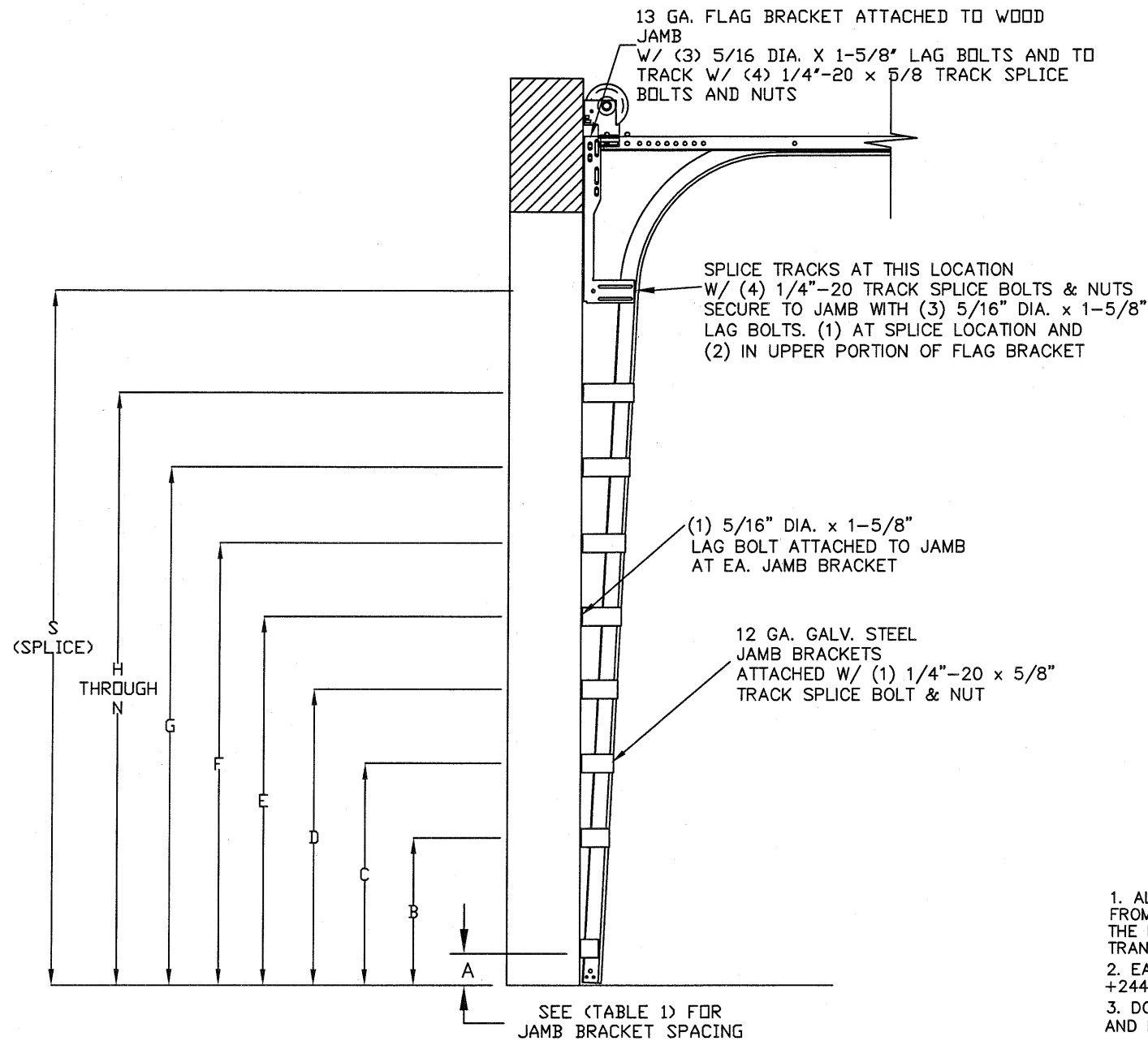


- NOTES:
1. ZINC COATING
  2. MATERIAL YIELD STRENGTH: 35-49 KSI.
  3. MATERIAL HARDNESS: 50-60 ROCKWELL B.
  4. 1.25" X 1.25" X 1" X 14 GA PUNCHED ANGLE MAY BE USED



SPECIFICATIONS AND NOTES

1. ALL THE LOAD FROM THE DOOR IS TRANSFERRED TO THE VERTICAL TRACK, FROM THE TRACK THE LOAD IS TRANSFERRED TO THE VERTICAL JAMBS. THE HORIZONTAL JAMB OR HEADER RECEIVES NO PORTION OF THE LOAD TRANSFERRED FROM THE DOOR.
2. EACH VERTICAL JAMBS RECEIVES MAXIMUM DESIGN LOADS OF: +244.8 LBS/FT & -279.0 LBS/FT
3. DOOR AND HARDWARE WILL BE DESIGNED, MANUFACTURED AND INSTALLED WITH STANDARDS AS SET FORTH BY DASMA.
4. DOOR SECTIONS SHALL BE 24 GA. MIN. EXTERIOR SKIN ROLLED FORMED, W/ BAKED ON POLYESTER FINISH
5. SUPPORTING STRUCTURAL ELEMENTS SHALL BE DESIGNED BY A REGISTERED PROFESSIONAL ENGINEER FOR WIND LOADS INDICATED ON THIS DRAWING IN ADDITION TO OTHER LOADINGS.
6. DOOR IS MANUFACTURED AND TESTED IN ACCORDANCE WITH THE 2018 IRC/IBC



TRACK CONFIGURATION FOR 6'6" UP TO 14' TALL DOORS

SEE TABLE 1 ON PAGE 3 FOR ADDITIONAL DOOR HEIGHTS AND THEIR TRACK SPACING REQUIREMENTS.

REV	DESCRIPTION OF REVISIONS	DATE	BY

MAX SIZE  
9' x 14'

DESIGN LOADS  
+54.4 PSF  
-62.0 PSF

TEST LOADS  
+81.6 PSF  
-93.0 PSF

LARGE MISSILE  
IMPACT  
RESISTANCE

Thomas L. Shelmerdine, PE (TX PE #85829)  
Structural Solutions, PA (TX Firm #004063)

TX

5921-G W. Friendly Ave., Greensboro, NC 27410

**Amarr**

MODEL #500  
CLASSICA 1000, 2000

SIZE	DRAWN BY	DRC	DATE	1/18/21	DRAWING NUMBER
B	CHECKED BY	DLJ	DATE	1/21/21	IRC-5309-185-21-1
AMARR COMPANY 165 CARRIAGE COURT WINSTON-SALEM, N.C. 27105					SHEET 2 OF 3

TABLE 1

DOOR HEIGHT	TRACK ATTACHMENT														TYPICAL SPLICE
	A	B	C	D	E	F	G	H	I	J	K	L	M	N	
7' 0"	3.5"	10.0"	22.0"	34"	46"	58"	70"								76"
7' 6"	3.5"	10.0"	22.0"	34"	46"	58"	70"								82"
8' 0"	3.5"	10.0"	22.0"	34"	46"	58"	70"	82"							88"
8' 6"	3.5"	10.0"	22.0"	34"	46"	58"	70"	82"							94"
9' 0"	3.5"	10.0"	22.0"	34"	46"	58"	70"	82"	94"						100"
9' 6"	3.5"	10.0"	22.0"	34"	46"	58"	70"	82"	94"						106"
10' 0"	3.5"	10.0"	22.0"	34"	46"	58"	70"	82"	94"	106"					112"
11' 0"	3.5"	10.0"	22.0"	34"	46"	58"	70"	82"	94"	106"	118"				124"
12' 0"	3.5"	10.0"	22.0"	34"	46"	58"	70"	82"	94"	106"	118"	130"			136"
13' 0"	3.5"	10.0"	22.0"	34"	46"	58"	70"	82"	94"	106"	118"	130"	142"		148"
14' 0"	3.5"	10.0"	22.0"	34"	46"	58"	70"	82"	94"	106"	118"	130"	142"	154"	160"

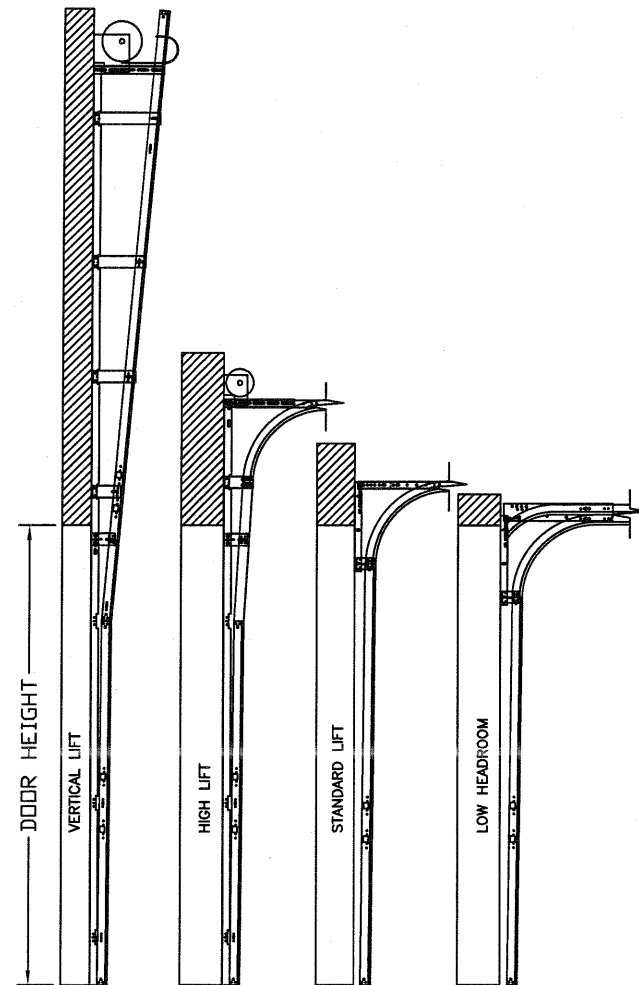
ALL TRACK AND ATTACHMENT SPACING +/-2" ALLOWED WITH SYP OR SPF NO. 2 OR BETTER ONLY

TABLE 2

Section Width (ft)	Panel Type	Center Stile Location (Measured from Left)	
		1st (in)	2st (in)
6' 0"	Short	24.6	47.4
7' 0"	Short	29.1	54.9
7' 2"	Short	29.9	56.1
7' 4"	Short	30.6	57.4
7' 6"	Long/Short	45.0	
7' 8"	Long/Short	46.0	
7' 10"	Long/Short	47.0	
8' 0"	Long/Short	48.0	
8' 2"	Long/Short	49.0	
8' 4"	Long/Short	50.0	
8' 6"	Long/Short	51.0	
8' 8"	Long/Short	52.0	
8' 10"	Long/Short	53.0	
9' 0"	Long/Short	54.0	

TABLE 3

SECTION	STRUT SIZE
TOP	3 5/8" TRUSS
	3" STRUT
5TH	3 5/8" TRUSS
	3" STRUT
4TH	3 5/8" TRUSS
	3" STRUT
3RD	3 5/8" TRUSS
	3" STRUT
2ND	3 5/8" TRUSS
	3" STRUT
BOTTOM	3 5/8" TRUSS
	3 5/8" TRUSS



AVAILABLE TRACK CONFIGURATIONS N.T.S.

WOOD JAMB ATTACHMENT TO STRUCTURE

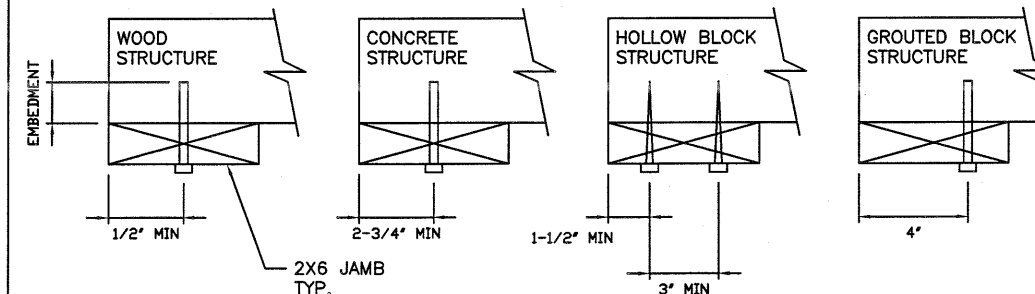
**2 X 6 VERTICAL JAMB ATTACHMENT TO WOOD FRAME STRUCTURE**  
 5/16" X 3" LAG SCREWS STARTING 6" FROM ENDS THEN 20" O.C. (1 1/2" EMBEDMENT)

**2 X 6 VERTICAL JAMB ATTACHMENT TO 2,000 PSI CONCRETE**  
 HILTI KWIK BOLT 3/8" X 4" STARTING 6" FROM ENDS THEN 24" O.C. (2 1/2" EMBEDMENT)  
 HILTI SLEEVE ANCHOR 3/8" X 2-3/4" STARTING 6" FROM ENDS THEN 18" O.C. (1 1/4" EMBEDMENT)  
 ITW/RAMSET REDHEAD (TRU-BOLT) 3/8" X 4" STARTING 6" FROM ENDS THEN 24" O.C. (2 1/2" EMBEDMENT)

**2 X 6 VERTICAL JAMB ATTACHMENT TO HOLLOW C-90 BLOCK**  
 SIMPSON 1/4" X 3" TITEN SCREWS STARTING 6" FROM ENDS, USE PAIRS OF FASTENERS (3" APART) AT 8" O.C. (1 1/2" EMBEDMENT)  
 HILTI 1/4" X 2-3/4" KWIK-CON II+ SCREWS STARTING 6" FROM ENDS, USE PAIRS OF FASTENERS (3" APART) AT 8" O.C. (1 1/4" EMBEDMENT)

**2 X 6 VERTICAL JAMB ATTACHMENT TO GROUTED C-90 BLOCK (2000 PSI GROUT)**  
 HILTI SLEEVE ANCHOR 3/8" X 2-3/4" STARTING 6" FROM ENDS THEN 20" O.C. (1 1/4" EMBEDMENT)  
 (OR, USE FASTENERS FOR HOLLOW C-90 BLOCK)

\*LAGS AND BOLTS CAN BE COUNTERSUNK TO PROVIDE A FLUSH MOUNTING SURFACE.  
 \*PREPARATION OF WOOD JAMBS BY OTHERS



REV	DESCRIPTION OF REVISIONS	DATE	BY

MAX SIZE 9' x 14'

DESIGN LOADS +54.4 PSF -62.0 PSF

TEST LOADS +81.6 PSF -93.0 PSF

LARGE MISSILE IMPACT RESISTANCE

Thomas L. Shelmerdine, PE (TX PE #85829)  
 Structural Solutions, PA (TX Firm #004063)

TX

5921-G.W. Friendly Ave., Greensboro, NC 27410



MODEL #500  
 CLASSICA 1000, 2000

SIZE	DRAWN BY	DRC	DATE	1/18/21	DRAWING NUMBER
B	CHECKED BY	DLJ	DATE	1/21/21	IRC-5309-185-21-1

AMARR COMPANY  
 165 CARRIAGE COURT WINSTON-SALEM, N.C. 27105

SHEET 3 OF 3