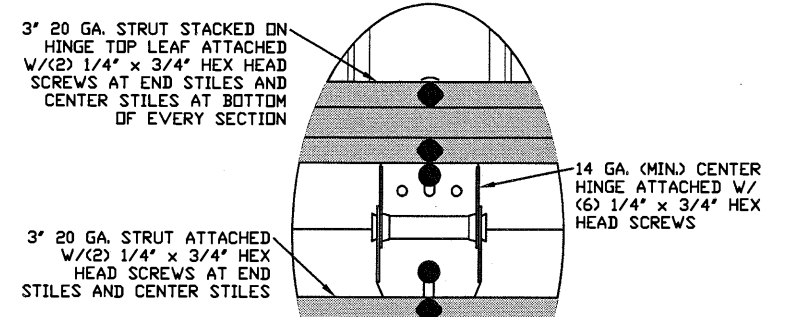
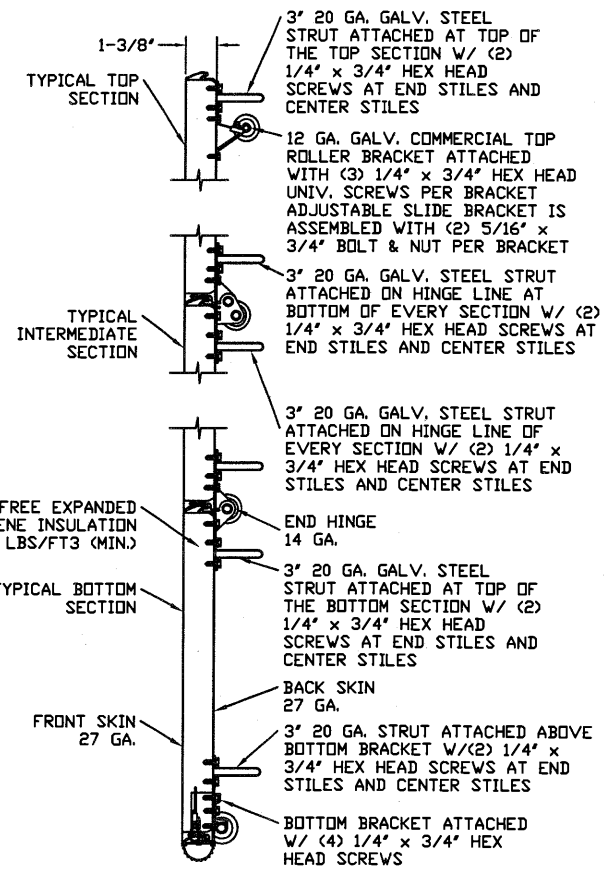


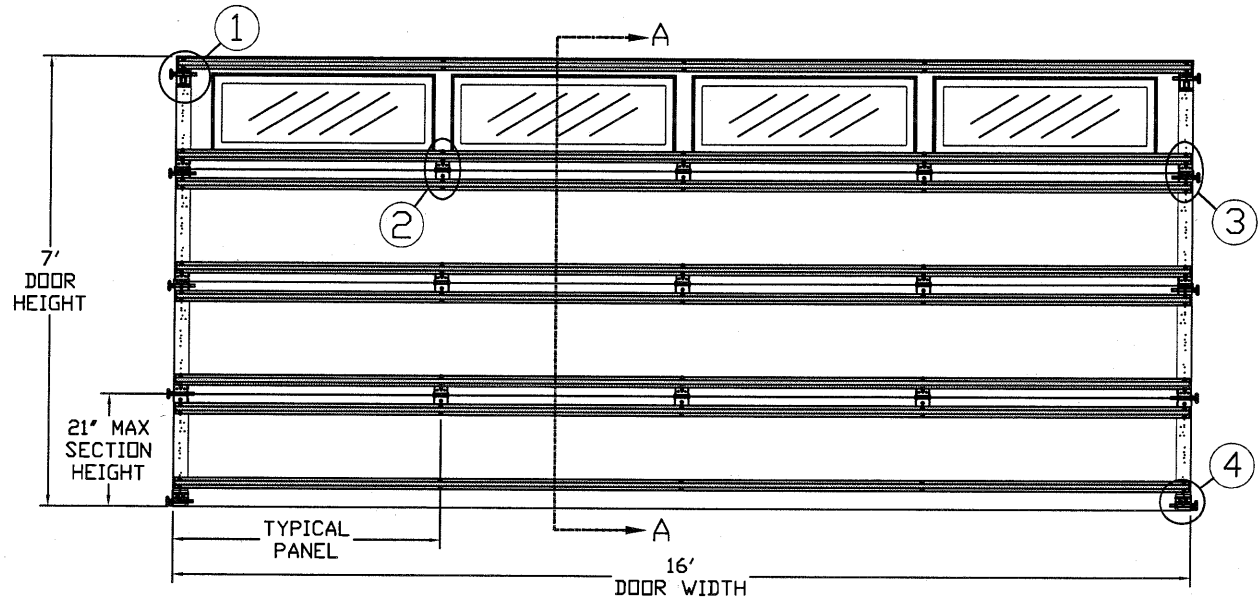
TYPICAL TOP FIXTURES
N.T.S. ①



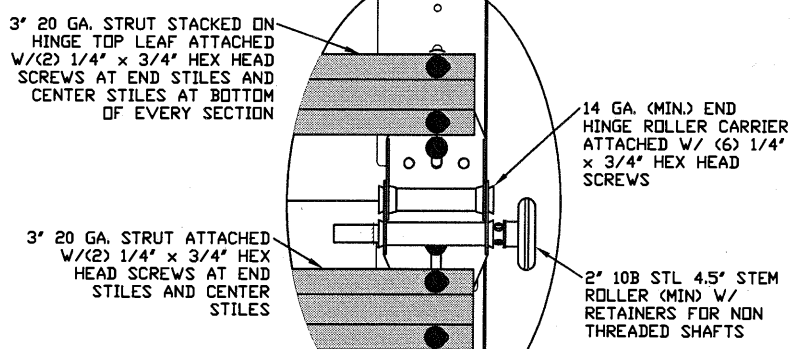
TYPICAL CENTER HINGE
N.T.S. ②



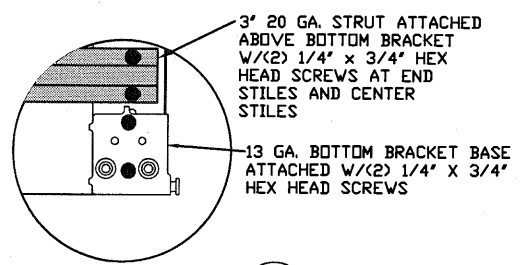
SECTION A-A (SIDE VIEW)
N.T.S.



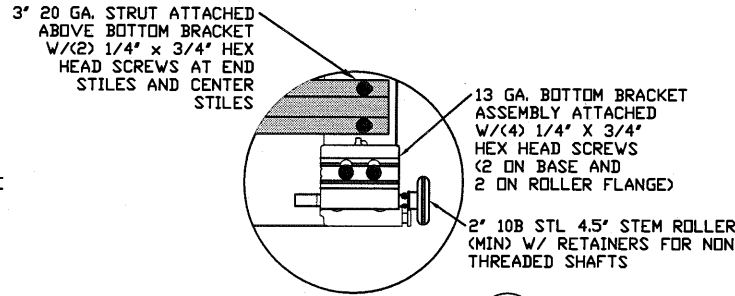
INSIDE ELEVATION
N.T.S.



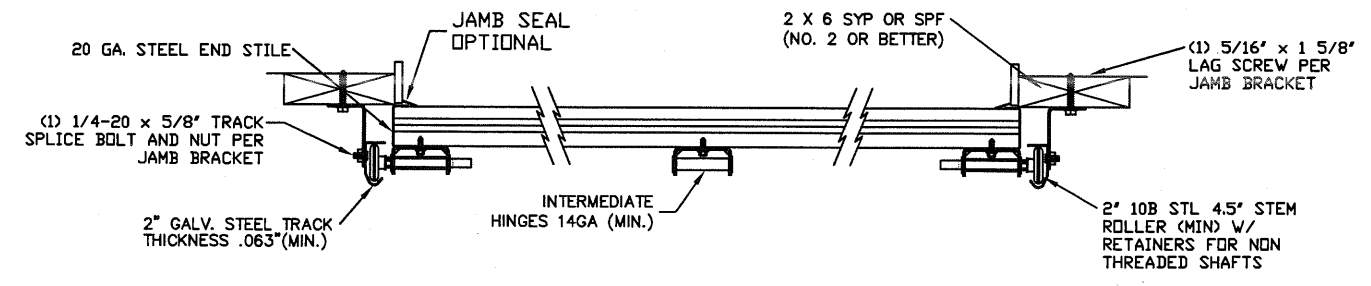
TYPICAL END HINGE
N.T.S. ③



TRBB-375 BOTTOM BRACKET
N.T.S. ④A



TRBB-375 BOTTOM BRACKET
N.T.S. ④B



TRACK MOUNTING DETAIL
N.T.S.

LARGE MISSILE IMPACT RESISTANT

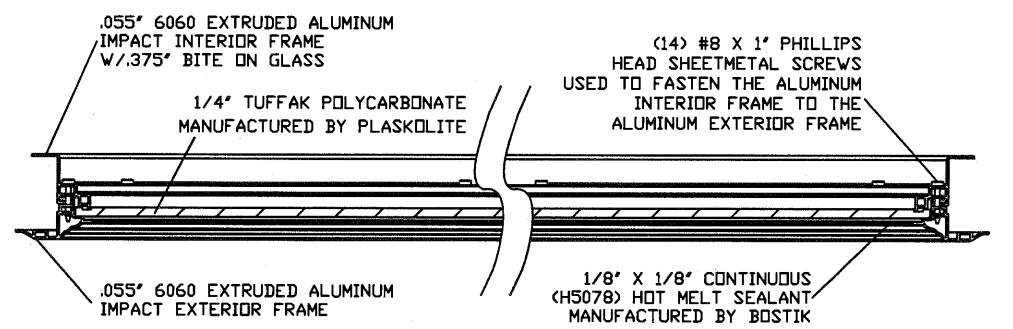
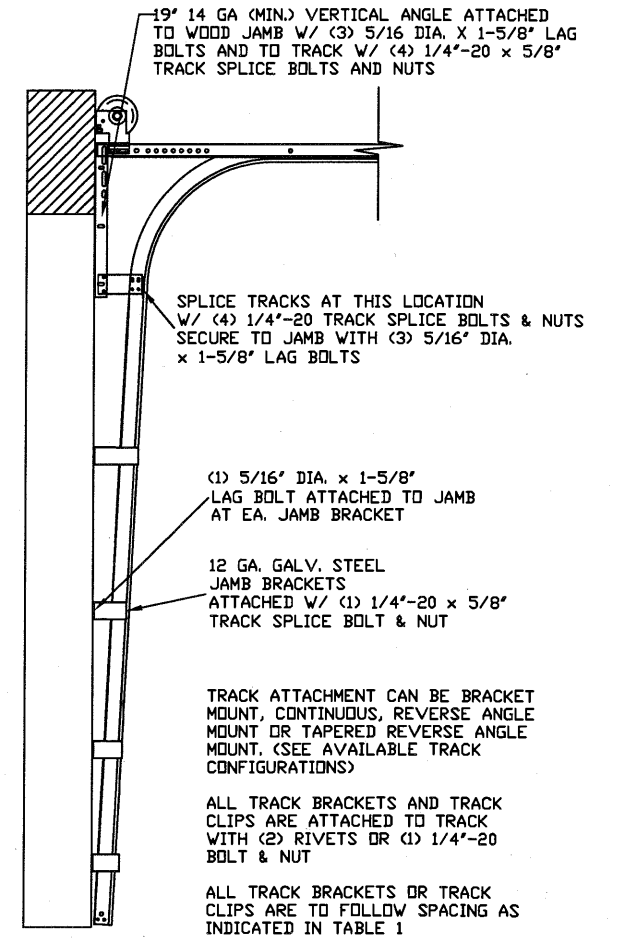
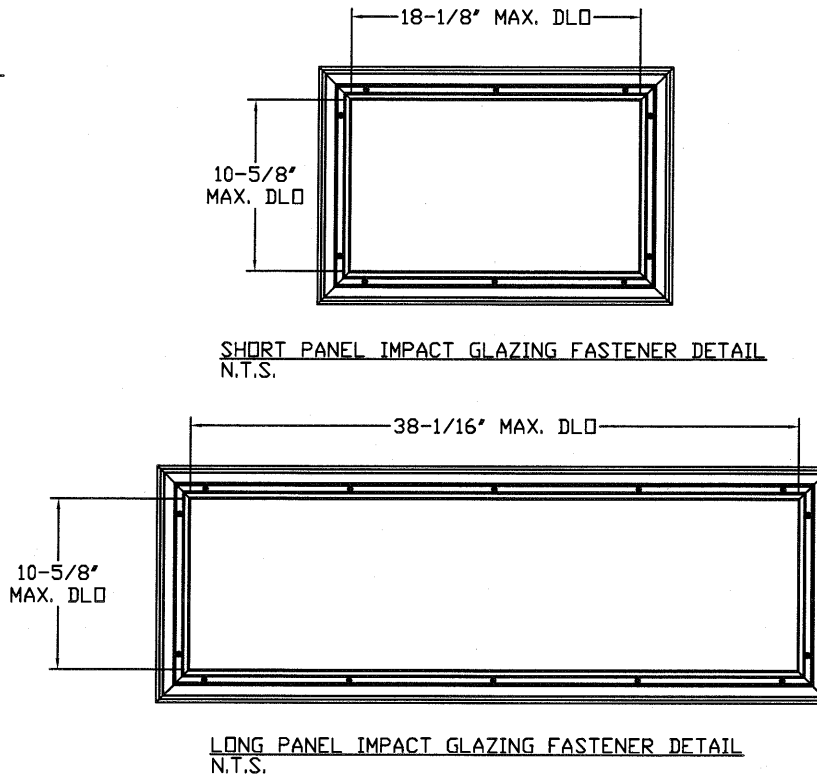
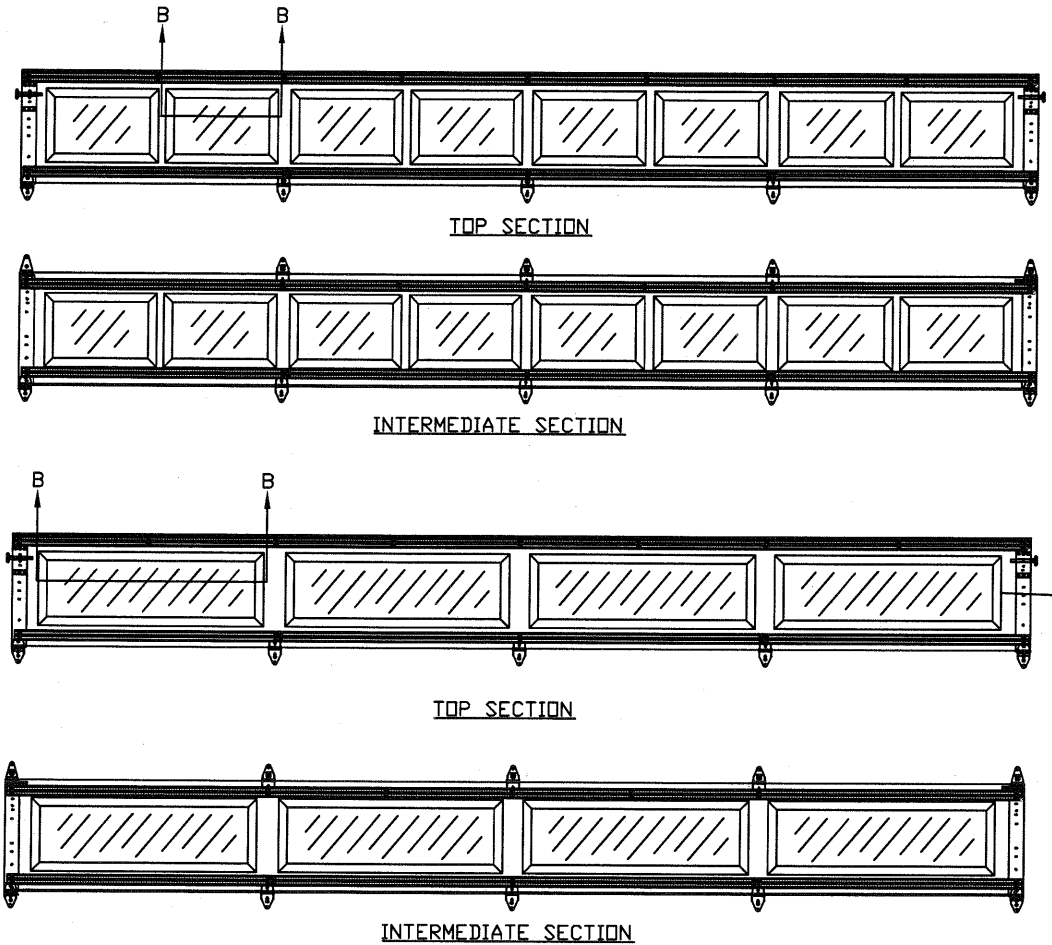
THE METHOD OF TESTING WAS IN SUBSTANTIAL CONFORMANCE WITH THE PROCEDURE DESCRIBED IN DASMA 108 & 115, AND ASTM E330, E1886, E1996, & F588. THE PRESSURES SHOWN ON THE DRAWINGS WERE CALCULATED USING ASCE 7-05 WITH THE FOLLOWING PARAMETERS (5 FEET OF DOOR WIDTH IN THE END ZONE, ROOF AT ANY SLOPE I=1.0):

WIND SPEED (MPH)	130	118	112	107	103
EXPOSURE LEVEL	B	C	C	D	D
MEAN ROOF HEIGHT	30'	15'	25'	15'	25'

REV	DESCRIPTION OF REVISIONS	DATE	BY
	MAX SIZE 16' x 14'		
	DESIGN LOADS +25.6 PSF -29.1 PSF		
	TEST LOADS +38.4 PSF -43.6 PSF		
	LARGE MISSILE IMPACT RESISTANT		
	Thomas L. Shelmerdine, PE (TX PE #85829) Structural Solutions, PA (TX Firm #004063)		
	STATE OF TEXAS THOMAS L. SHELMERDINE 85829 LICENSED PROFESSIONAL ENGINEER		
	TX		
	Amarr ENTREMATIC		
	MODEL #3100 AMARR LINCOLN 3138 MODEL #3150 AMARR HILLCREST 3138 MODEL #1600 AMARR LINCOLN 3000 MODEL #1650 AMARR HILLCREST 3000		
	SIZE DRAWN BY DRD DATE 12/20/18 DRAWING NUMBER		
	B CHECKED BY RLR DATE 03/19/19 IRC-3116-130-15-1		
	ENTREMATIC 165 CARRIAGE COURT WINSTON-SALEM, NC. 27105		
	SHEET 1 OF 3		

5921-G W. Friendly Ave., Greensboro, NC 27410

OPTIONAL SHORT AND LONG PANEL GLAZING LAYOUTS



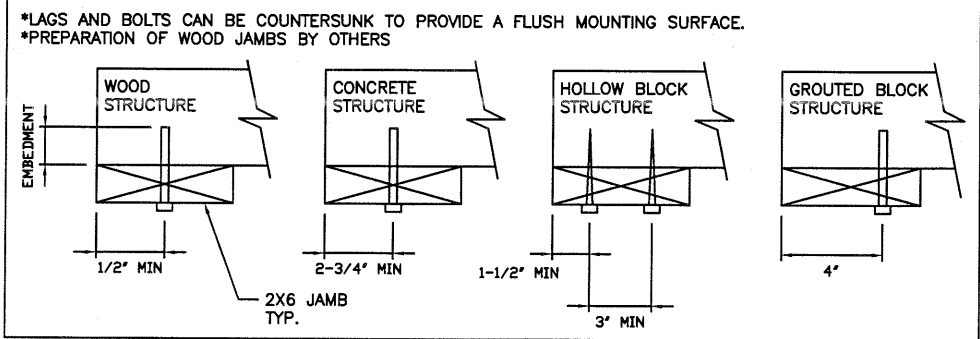
WOOD JAMB ATTACHMENT TO STRUCTURE

2 X 6 VERTICAL JAMB ATTACHMENT TO WOOD FRAME STRUCTURE
 5/16" X 3" LAG SCREWS STARTING 6" FROM ENDS THEN 24" O.C. (1 1/2" EMBEDMENT)

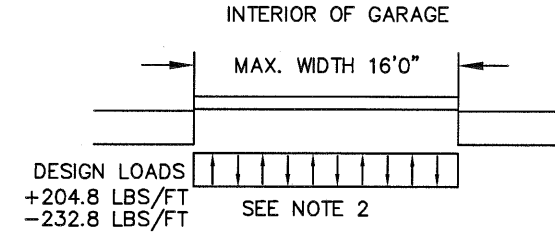
2 X 6 VERTICAL JAMB ATTACHMENT TO 2,000 PSI CONCRETE
 HILTI KWIK BOLT 3/8" X 4" STARTING 6" FROM ENDS THEN 24" O.C. (2 1/2" EMBEDMENT)
 HILTI SLEEVE ANCHOR 3/8" X 2-3/4" STARTING 6" FROM ENDS THEN 20" O.C. (1 1/4" EMBEDMENT)
 ITW/RAMSET REDHEAD (TRU-BOLT) 3/8" X 4" STARTING 6" FROM ENDS THEN 24" O.C. (2 1/2" EMBEDMENT)

2 X 6 VERTICAL JAMB ATTACHMENT TO HOLLOW C-90 BLOCK
 SIMPSON 1/4" X 3" TITEN SCREWS STARTING 6" FROM ENDS, USE PAIRS OF FASTENERS (3" APART) AT 16" O.C. (1 1/2" EMBEDMENT)
 HILTI 1/4" X 2-3/4" KWIK-CON II+ SCREWS STARTING 6" FROM ENDS, USE PAIRS OF FASTENERS (3" APART) AT 16" O.C. (1 1/4" EMBEDMENT)

2 X 6 VERTICAL JAMB ATTACHMENT TO GROUTED C-90 BLOCK (2000 PSI GROUT)
 HILTI SLEEVE ANCHOR 3/8" X 2-3/4" STARTING 6" FROM ENDS THEN 24" O.C. (1 1/4" EMBEDMENT) (OR, USE FASTENERS FOR HOLLOW C-90 BLOCK)



SECTION B-B IMPACT WINDOW DETAIL
 N.T.S.



SPECIFICATIONS AND NOTES

1. ALL THE LOAD FROM THE DOOR IS TRANSFERRED TO THE VERTICAL TRACK, FROM THE TRACK THE LOAD IS TRANSFERRED TO THE VERTICAL JAMBS. THE HORIZONTAL JAMB OR HEADER RECEIVES NO PORTION OF THE LOAD TRANSFERRED FROM THE DOOR.
2. EACH VERTICAL JAMBS RECEIVES MAXIMUM DESIGN LOADS OF: +204.8 LBS/FT & -232.8 LBS/FT.
3. DOOR AND HARDWARE WILL BE DESIGNED, MANUFACTURED AND INSTALLED WITH STANDARDS AS SET FORTH BY DASMA.
4. DOOR SECTIONS SHALL BE 27GA MIN. INTERIOR AND 27GA MIN. EXTERIOR SKIN ROLLED FORMED, W/ BAKED ON POLYESTER FINISH.
5. SUPPORTING STRUCTURAL ELEMENTS SHALL BE DESIGNED BY A REGISTERED PROFESSIONAL ENGINEER FOR WIND LOADS INDICATED ON THIS DRAWING IN ADDITION TO OTHER LOADINGS.
6. PANEL STAMP DOES NOT AFFECT WINDLOAD CAPABILITIES.

TRACK CONFIGURATION FOR UP TO 14' TALL DOORS
 N.T.S.

REV	DESCRIPTION OF REVISIONS	DATE	BY

MAX SIZE 16' x 14'
 DESIGN LOADS +25.6 PSF -29.1 PSF
 TEST LOADS +38.4 PSF -43.6 PSF
 LARGE MISSILE IMPACT RESISTANT

Thomas L. Shelmerdine, PE (TX PE #85829)
 Structural Solutions, PA (TX Firm #F-004063)

STATE OF TEXAS
 THOMAS L. SHELMERDINE
 85829
 LICENSED PROFESSIONAL ENGINEER

TX
Amarr
 ENTREMATIC

MODEL #3100 AMARR LINCOLN 3138
 MODEL #3150 AMARR HILLCREST 3138
 MODEL #1600 AMARR LINCOLN 3000
 MODEL #1650 AMARR HILLCREST 3000

SIZE	DRAWN BY DRD	DATE 12/20/18	DRAWING NUMBER
B	CHECKED BY DLJ	DATE 03/19/19	IRC-3116-130-15-1

ENTREMATIC
 165 CARRIAGE COURT WINSTON-SALEM, N.C. 27105
 SHEET 2 OF 3

5921-G W. Friendly Ave., Greensboro, NC 27410

TABLE 1

DOOR HEIGHT	TRACK ATTACHMENT								SPLICE S
	A	B	C	D	E	F	G	H	
6' 6"	3.5"	10"	21"	42"	63"				70"
7'	3.5"	10"	21"	42"	63"				76"
7' 6"	3.5"	10"	21"	42"	63"				82"
8'	3.5"	10"	21"	42"	63"				88"
8' 6"	3.5"	10"	21"	42"	63"	84"			94"
9'	3.5"	10"	21"	42"	63"	84"			100"
9' 6"	3.5"	10"	21"	42"	63"	84"			106"
10'	3.5"	10"	21"	42"	63"	84"	105"		112"
10' 6"	3.5"	10"	21"	42"	63"	84"	105"		118"
11'	3.5"	10"	21"	42"	63"	84"	105"		124"
11' 6"	3.5"	10"	21"	42"	63"	84"	105"		130"
12'	3.5"	10"	21"	42"	63"	84"	105"	126"	136"
12' 6"	3.5"	10"	21"	42"	63"	84"	105"	126"	142"
13'	3.5"	10"	21"	42"	63"	84"	105"	126"	148"
13' 6"	3.5"	10"	21"	42"	63"	84"	105"	126"	154"
14'	3.5"	10"	21"	42"	63"	84"	105"	126"	160"

ALL TRACK ATTACHMENT SPACING +/- 2" ALLOWED WITH SYP OR SPF NO. 2 OR BETTER ONLY

TABLE 2

DOOR HEIGHT	SECTION HEIGHTS							
	Btm	#2	#3	#4	#5	#6	#7	#8
6' 0"	18"	18"	18"	18"				
6' 6"	21"	18"	18"	21"				
7' 0"	21"	21"	21"	21"				
7' 6"	18"	18"	18"	18"	18"			
8' 0"	21"	18"	18"	18"	21"			
8' 6"	21"	21"	21"	18"	21"			
9' 0"	18"	18"	18"	18"	18"	18"		
9' 6"	21"	18"	18"	18"	18"	21"		
10' 0"	21"	21"	21"	18"	18"	21"		
10' 6"	21"	21"	21"	21"	21"	21"		
11' 0"	21"	18"	18"	18"	18"	18"	21"	
11' 6"	21"	21"	21"	18"	18"	18"	21"	
12' 0"	21"	21"	21"	21"	21"	18"	21"	
12' 6"	21"	18"	18"	18"	18"	18"	18"	21"
13' 0"	21"	21"	21"	18"	18"	18"	18"	21"
13' 6"	21"	21"	21"	21"	21"	18"	18"	21"
14' 0"	21"	21"	21"	21"	21"	21"	21"	21"

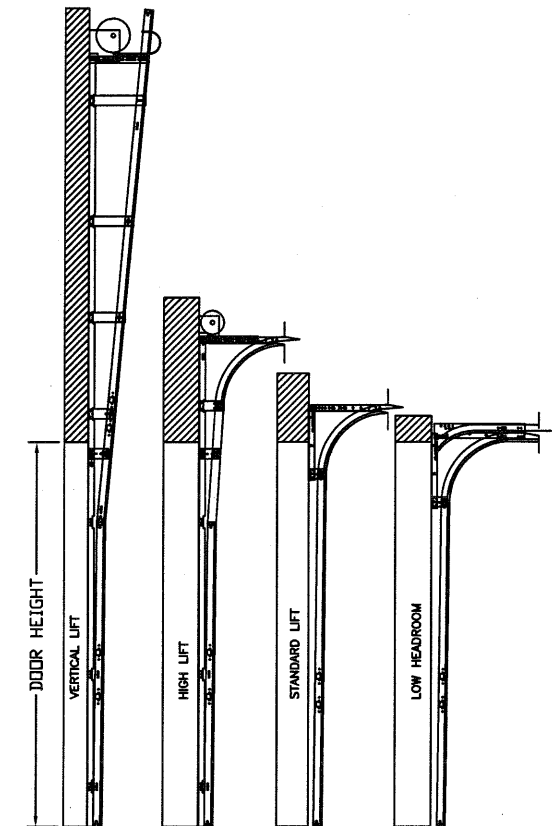
TABLE 4

SECTION	STRUT SIZE
TOP	3"
	3"
7TH	3"
	3"
6TH	3"
	3"
5TH	3"
	3"
4TH	3"
	3"
3RD	3"
	3"
2ND	3"
	3"
BOTTOM	3"
	3"

TABLE 3

Section Width (ft)	Panel Type	Center Stile Locations (Measured from Left Edge)			
		1st (in)	2st (in)	3rd (in)	4th (in)
14' 0"	Short	57.76	84.00	110.11	
14' 0"	Long	58.63	84.00	109.38	
14' 2"	Short	58.85	85.00	111.41	
14' 2"	Long	59.17	85.00	110.83	
14' 4"	Short	59.16	86.00	112.71	
14' 4"	Long	60.17	86.00	111.83	
14' 6"	Short	59.86	87.00	114.01	
14' 6"	Long	61.17	87.00	112.83	
14' 8"	Short	60.56	88.00	115.31	
14' 8"	Long	44.81	88.00	131.19	
14' 10"	Short	61.26	89.00	116.61	
14' 10"	Long	45.60	89.00	132.40	
15' 0"	Short	61.94	90.00	117.94	
15' 0"	Long	46.60	90.00	133.40	
15' 2"	Short	62.66	91.00	119.21	
15' 2"	Long	47.60	91.00	134.40	
15' 4"	Short	53.60	79.20	104.80	130.40
15' 4"	Long	47.25	92.00	136.75	
15' 6"	Short	46.62	93.00	139.38	
15' 6"	Long	47.60	93.00	138.40	
15' 6"	Hillcrest	47.42	93.00	138.58	
15' 8"	Short	47.62	94.00	140.38	
15' 8"	Long	48.60	94.00	139.40	
15' 8"	Hillcrest	48.02	94.00	139.98	
15' 10"	Short	48.62	95.00	141.38	
15' 10"	Long	49.17	95.00	140.83	
15' 10"	Hillcrest	48.62	95.00	141.38	
16' 0"	Short	49.62	96.00	142.38	
16' 0"	Long	50.60	96.00	141.40	
16' 0"	Hillcrest	48.42	96.00	143.58	

CONTACT ENGINEERING REGARDING SIZES NOT LISTED



AVAILABLE TRACK CONFIGURATIONS N.T.S.

REV	DESCRIPTION OF REVISIONS	DATE	BY

MAX SIZE 16' x 14'

DESIGN LOADS
+25.6 PSF
-29.1 PSF

TEST LOADS
+38.4 PSF
-43.6 PSF

LARGE MISSILE IMPACT RESISTANT

Thomas L. Shelmerdine, PE (TX PE #85829)
Structural Solutions, PA (TX Firm #F-004063)

STATE OF TEXAS
THOMAS L. SHELMERDINE
85829
LICENSED PROFESSIONAL ENGINEER

TX

Amarr
ENTREMATIC

MODEL #3100 AMARR LINCOLN 3138
MODEL #3150 AMARR HILLCREST 3138
MODEL #1600 AMARR LINCOLN 3000
MODEL #1650 AMARR HILLCREST 3000

SIZE	DRAWN BY DRD	DATE 12/20/18	DRAWING NUMBER
B	CHECKED BY DLJ	DATE 03/19/19	IRC-3116-130-15-1

ENTREMATIC
165 CARRIAGE COURT WINSTON-SALEM, N.C. 27105

SHEET 3 OF 3

5921-G W. Friendly Ave., Greensboro, NC 27410