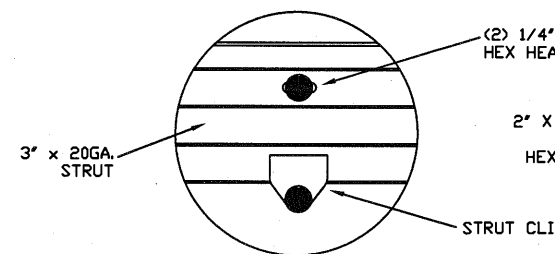
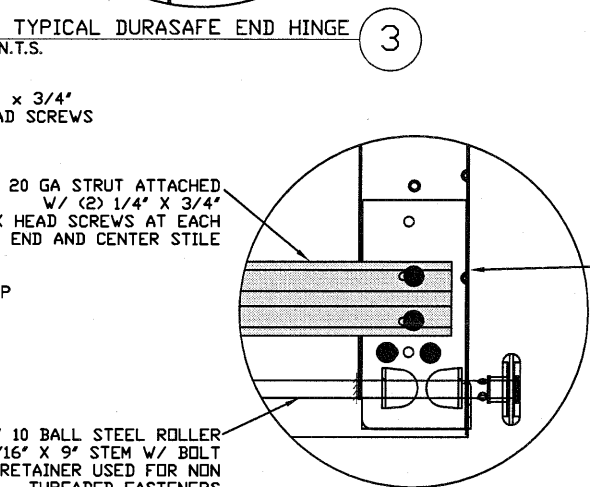


INSIDE ELEVATION
N.T.S.

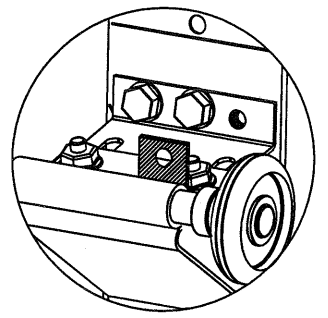


TYPICAL TOP STRUT ATTACHMENT
N.T.S.

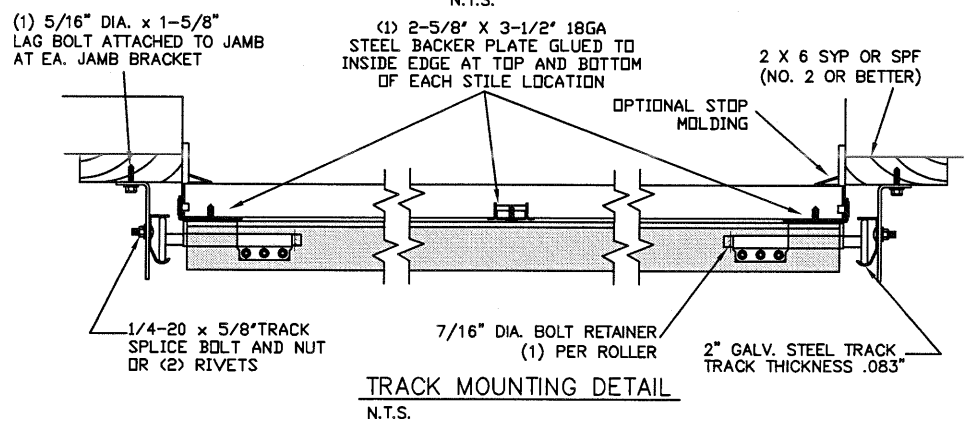
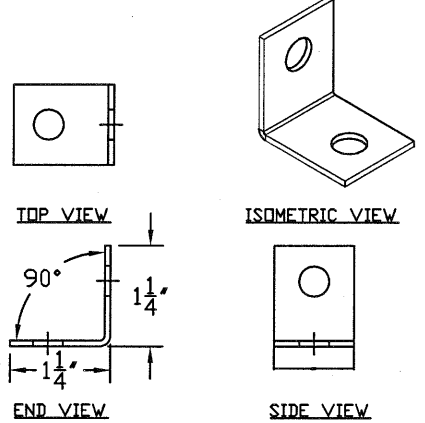


TYPICAL BOTTOM BRACKET
N.T.S.

TOP FIXTURE REINFORCEMENT ILLUSTRATION



TOP FIXTURE ADDER PIECE



TRACK MOUNTING DETAIL
N.T.S.

THE METHOD OF TESTING WAS IN SUBSTANTIAL CONFORMANCE WITH THE PROCEDURE DESCRIBED IN DASMA 108 & 115, ASTM E330, E1886, E1996, & F588. THE PRESSURES SHOWN ON THE DRAWINGS WERE CALCULATED USING ASCE 7-98/02/05 WITH THE FOLLOWING PARAMETERS (5 FEET OF DOOR WIDTH IN THE END ZONE, ROOF AT ANY SLOPE I=1.0):

WIND SPEED (MPH)	190	172	164	156	150
EXPOSURE LEVEL	B	C	C	D	D
MEAN ROOF HEIGHT	30'	15'	25'	15'	25'

LARGE MISSILE IMPACT RESISTANT

REV	DESCRIPTION OF REVISIONS	DATE	BY

MAX SIZE
9' WIDTH
14' HEIGHT

DESIGN LOADS
+57.0 PSF
-67.5 PSF

TEST LOADS
(1.5 x DESIGN LOADS)
+85.5 PSF
-101.3 PSF

LARGE MISSILE IMPACT RESISTANCE

Thomas L. Shelmerdine, PE (TX PE #85829)
Structural Solutions, PA (TX Firm #004063)

STATE OF TEXAS
THOMAS L. SHELMERDINE
85829
LICENSED PROFESSIONAL ENGINEER

TX

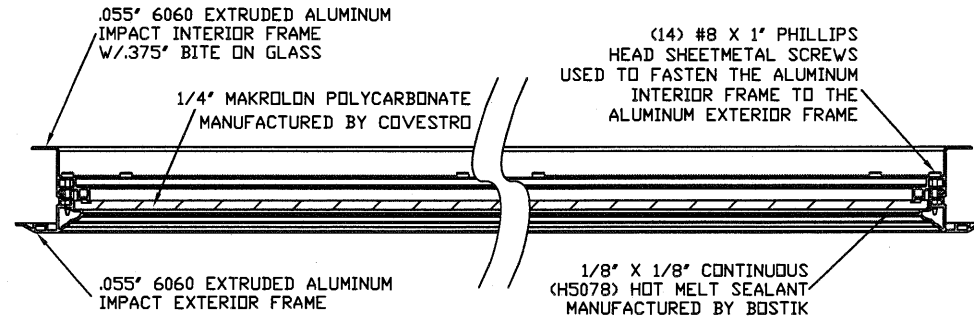
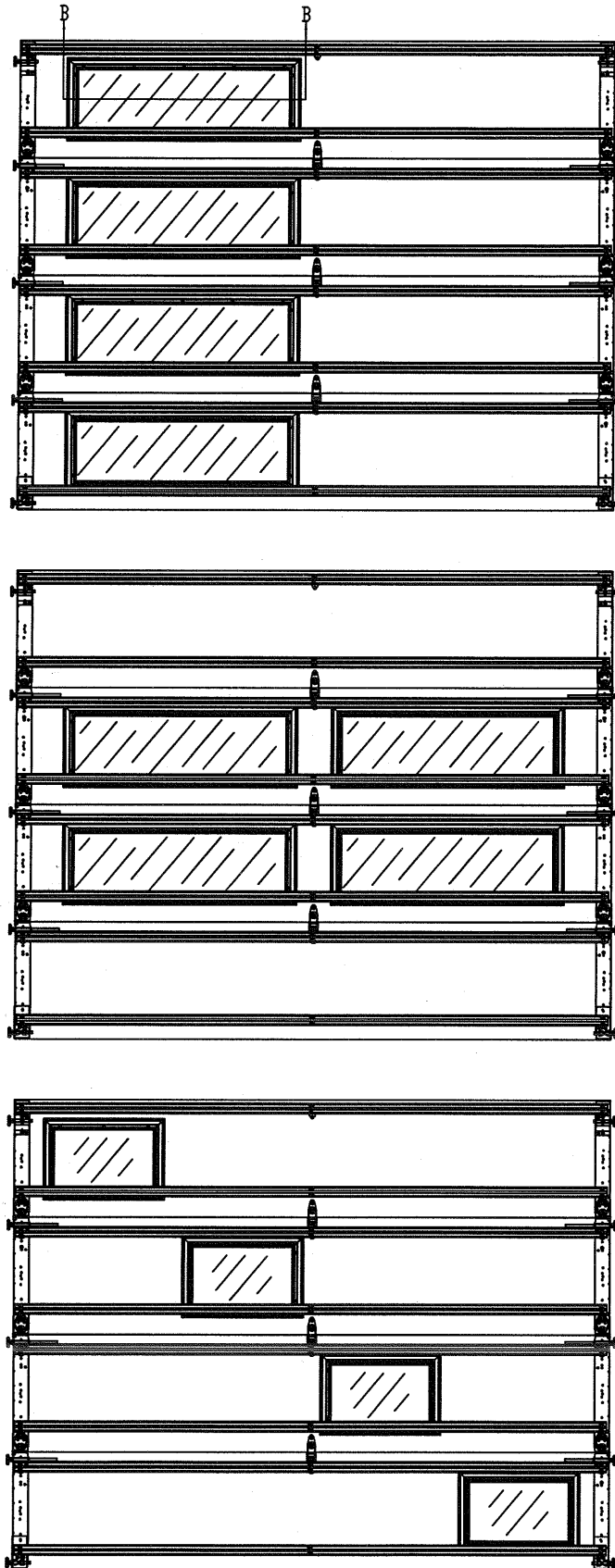
5921-G W. Friendly Ave., Greensboro, NC 27410



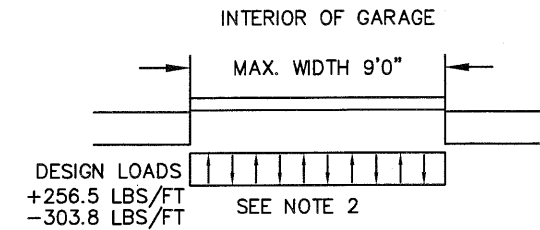
MODEL #1200 AMARR HERITAGE 3000
MODEL #1200 AMARR OAK SUMMIT 3000
SHORT, LONG, FLUSH & OAK SUMMIT PANELS

SIZE	DRAWN BY	RLR	DATE	8/1/18	DRAWING NUMBER
B	CHECKED BY	RLR	DATE	8/1/18	RC-1209-190-15-F
ENTRE/MATIC 165 CARRIAGE COURT WINSTON-SALEM, N.C. 27105					SHEET 1 OF 3

EXAMPLES OF OPTIONAL SHORT AND LONG PANEL GLAZING LAYOUTS
GLAZING AVAILABLE IN ANY COMBINATION



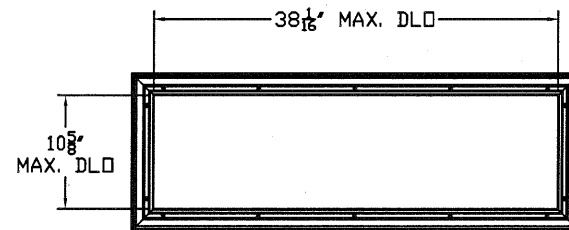
SECTION B-B IMPACT WINDOW DETAIL
N.T.S.



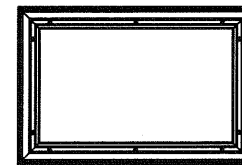
DESIGN LOADS
+256.5 LBS/FT
-303.8 LBS/FT
SEE NOTE 2

SPECIFICATIONS AND NOTES

1. ALL THE LOAD FROM THE DOOR IS TRANSFERRED TO THE VERTICAL TRACK, FROM THE TRACK THE LOAD IS TRANSFERRED TO THE VERTICAL JAMBS. THE HORIZONTAL JAMB OR HEADER RECEIVES NO PORTION OF THE LOAD TRANSFERRED FROM THE DOOR.
2. EACH VERTICAL JAMBS RECEIVES MAXIMUM DESIGN LOADS OF: +256.5 LBS/FT & -303.8 LBS/FT
3. DOOR AND HARDWARE WILL BE DESIGNED, MANUFACTURED AND INSTALLED WITH STANDARDS AS SET FORTH BY DASMA.
4. DOOR SECTIONS SHALL BE 24 GA. (.0216) MIN. EXTERIOR SKIN ROLLED FORMED, W/ BAKED ON POLYESTER FINISH
5. DOORS OVER (4) SECTIONS REFER TO TABLES 1 AND 2
6. SUPPORTING STRUCTURAL ELEMENTS SHALL BE DESIGNED BY A REGISTERED PROFESSIONAL ENGINEER FOR WIND LOADS



LONG PANEL IMPACT GLAZING FASTENER DETAIL
N.T.S.



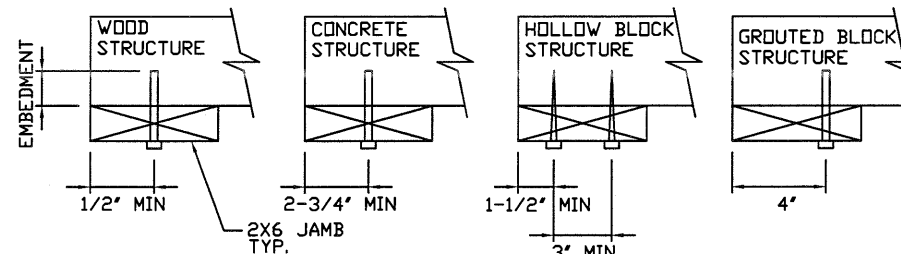
SHORT PANEL IMPACT GLAZING FASTENER DETAIL
N.T.S.

WOOD JAMB ATTACHMENT TO STRUCTURE

2 X 6 VERTICAL JAMB ATTACHMENT TO WOOD FRAME STRUCTURE
5/16" X 3" LAG SCREWS STARTING 6" FROM ENDS THEN 18" O.C. (1 1/2" EMBEDMENT)
2 X 6 VERTICAL JAMB ATTACHMENT TO 2,000 PSI CONCRETE
HILTI KWIK BOLT 3/8" X 4" STARTING 6" FROM ENDS THEN 24" O.C. (2 1/2" EMBEDMENT)
HILTI SLEEVE ANCHOR 3/8" X 2-3/4" STARTING 6" FROM ENDS THEN 16" O.C. (1 1/4" EMBEDMENT)
ITW/RAMSET REDHEAD (TRU-BOLT) 3/8" X 4" STARTING 6" FROM ENDS THEN 24" O.C. (2 1/2" EMBEDMENT)
2 X 6 VERTICAL JAMB ATTACHMENT TO HOLLOW C-90 BLOCK (1900 PSI MIN)
SIMPSON 1/4" X 3" TITEN SCREWS STARTING 6" FROM ENDS, USE PAIRS OF FASTENERS (3" APART) AT 8" O.C. (1 1/2" EMBEDMENT)
HILTI 1/4" X 2-3/4" KWIK-CDN II+ SCREWS STARTING 6" FROM ENDS, USE PAIRS OF FASTENERS (3" APART) AT 8" O.C. (1 1/4" EMBEDMENT)

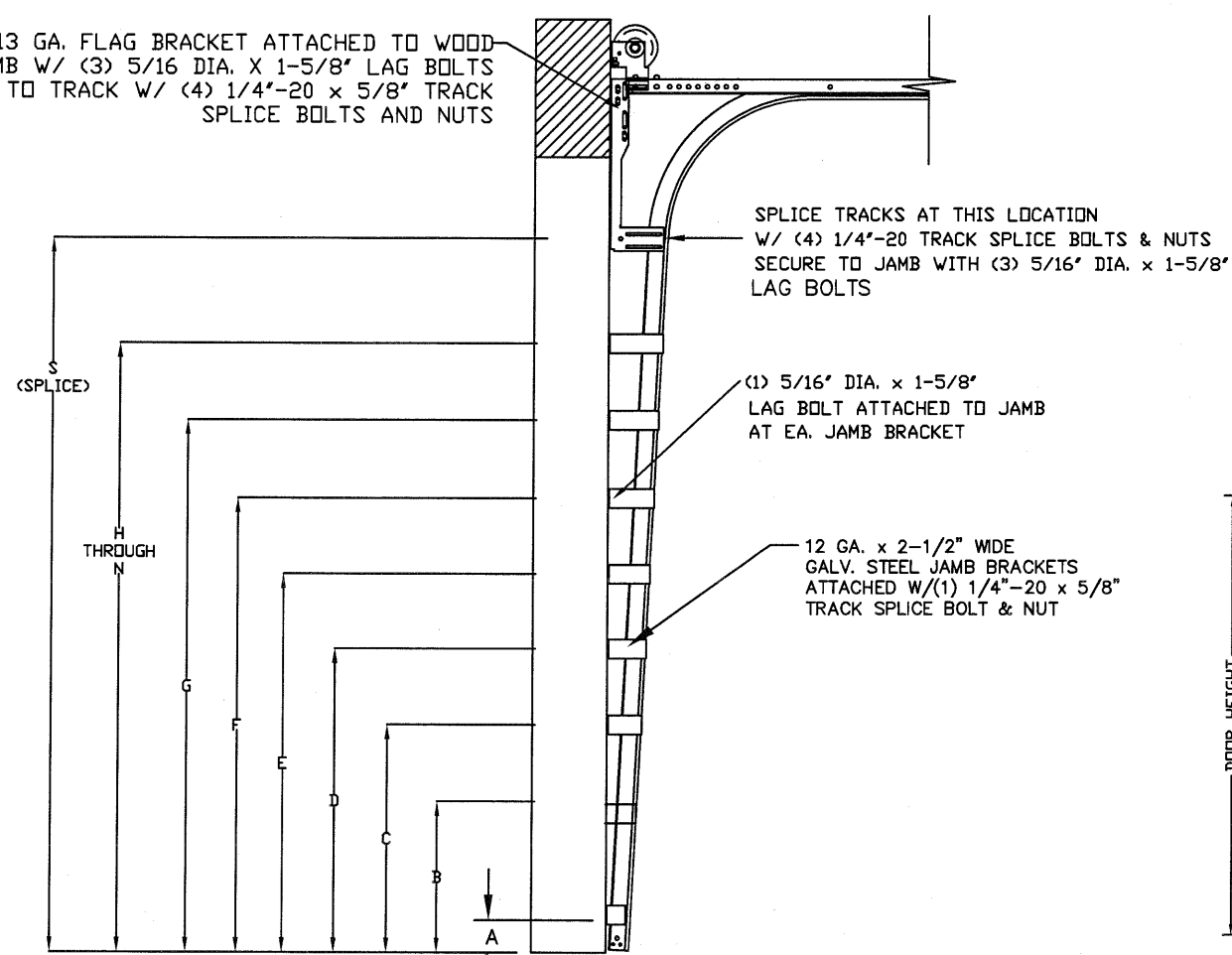
2 X 6 VERTICAL JAMB ATTACHMENT TO GROUTED C-90 BLOCK (2000 PSI GROUT)
HILTI SLEEVE ANCHOR 3/8" X 2-3/4" STARTING 6" FROM ENDS THEN 20" O.C. (1 1/4" EMBEDMENT) (OR, USE FASTENERS FOR HOLLOW C-90 BLOCK)

*LAGS AND BOLTS CAN BE COUNTERSUNK TO PROVIDE A FLUSH MOUNTING SURFACE.
*PREPARATION OF WOOD JAMBS BY OTHERS



REV	DESCRIPTION OF REVISIONS	DATE	BY
	MAX SIZE 9" WIDTH 14" HEIGHT		
	DESIGN LOADS +57.0 PSF -67.5 PSF		
	TEST LOADS (1.5 x DESIGN LOADS) +85.5 PSF -101.3 PSF		
	LARGE MISSILE IMPACT RESISTANCE		
	<div style="display: flex; align-items: center;"> <div style="writing-mode: vertical-rl; transform: rotate(180deg); font-size: 8px; margin-right: 5px;"> Thomas L. Shelmerdine, PE (TX PE #85829) Structural Solutions, PA (TX Firm #F-004063) </div> <div style="text-align: center;"> </div> <div style="writing-mode: vertical-rl; font-size: 8px; margin-left: 5px;"> 5921-G.W. Friendly Ave., Greensboro, NC 27410 </div> </div>		
	MODEL #1200 AMARR HERITAGE 3000 MODEL #1200 AMARR OAK SUMMIT 3000 SHORT, LONG, FLUSH & OAK SUMMIT PANELS		
SIZE	DRAWN BY RLR	DATE 8/1/18	DRAWING NUMBER
B	CHECKED BY RLR	DATE 8/1/18	RC-1209-190-15-F
ENTREMATIC 165 CARRIAGE COURT WINSTON-SALEM, N.C. 27105			SHEET 2 OF 3

13 GA. FLAG BRACKET ATTACHED TO WOOD JAMB W/ (3) 5/16 DIA. X 1-5/8" LAG BOLTS AND TO TRACK W/ (4) 1/4"-20 X 5/8" TRACK SPLICE BOLTS AND NUTS



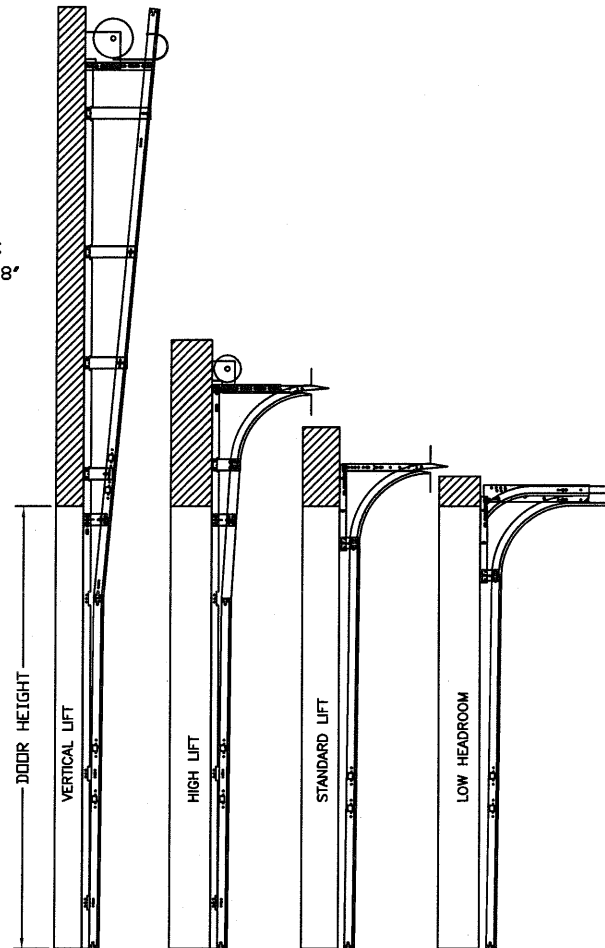
SPLICE TRACKS AT THIS LOCATION W/ (4) 1/4"-20 TRACK SPLICE BOLTS & NUTS SECURE TO JAMB WITH (3) 5/16" DIA. X 1-5/8" LAG BOLTS

(1) 5/16" DIA. X 1-5/8" LAG BOLT ATTACHED TO JAMB AT EA. JAMB BRACKET

12 GA. X 2-1/2" WIDE GALV. STEEL JAMB BRACKETS ATTACHED W/(1) 1/4"-20 X 5/8" TRACK SPLICE BOLT & NUT

SEE (TABLE 1) FOR JAMB BRACKET SPACING

TRACK CONFIGURATION FOR 6'6" UP TO 14' TALL DOORS
N.T.S.



AVAILABLE TRACK CONFIGURATIONS
N.T.S.

Section Width (ft)	Panel Type	Center Stile Location (Measured from Left Edge)
8'0"	Short	48.000
8'0"	Long	48.000
8'2"	Short	49.000
8'2"	Long	49.000
8'4"	Short	50.000
8'4"	Long	50.000
8'6"	Short	51.000
8'6"	Long	51.000
8'8"	Short	52.000
8'8"	Long	52.000
8'10"	Short	53.000
8'10"	Long	53.000
9'0"	Short	54.000
9'0"	Long	54.000

TABLE 1

DOOR HEIGHT	TRACK ATTACHMENT														SPLICE	
	A	B	C	D	E	F	G	H	I	J	K	L	M	N		
6'6"	3"	14"	27"	38"	46"	56"	64"									70"
7'	3"	14"	27"	38"	46"	56"	68"									76"
7'6"	3"	14"	27"	38"	46"	56"	68"	78"								82"
8'	3"	14"	27"	38"	46"	56"	68"	78"								88"
8'6"	3"	14"	27"	38"	46"	56"	68"	78"	88"							94"
9'	3"	14"	27"	38"	46"	56"	68"	78"	88"							100"
9'6"	3"	14"	27"	38"	46"	56"	68"	78"	88"	98"						106"
10'	3"	14"	27"	38"	46"	56"	68"	78"	88"	100"						112"
10'6"	3"	14"	27"	38"	46"	56"	68"	78"	88"	100"	110"					118"
11'	3"	14"	27"	38"	46"	56"	68"	78"	88"	100"	110"					124"
11'6"	3"	14"	27"	38"	46"	56"	68"	78"	88"	100"	110"	120"				130"
12'	3"	14"	27"	38"	46"	56"	68"	78"	88"	100"	110"	122"				136"
12'6"	3"	14"	27"	38"	46"	56"	68"	78"	88"	100"	109"	122"	132"			142"
13'	3"	14"	27"	38"	46"	56"	68"	78"	88"	100"	114"	122"	134"			148"
13'6"	3"	14"	27"	38"	46"	56"	68"	78"	88"	100"	109"	122"	134"	144"		154"
14'	3"	14"	27"	38"	46"	56"	68"	78"	88"	100"	114"	122"	134"	146"		160"

TABLE 2

DOOR HEIGHT	SECTION HEIGHTS							
	Btm	#2	#3	#4	#5	#6	#7	#8
14'0"	21"	21"	21"	21"	21"	21"	21"	21"
13'6"	21"	21"	21"	21"	21"	18"	18"	21"
13'0"	21"	21"	21"	18"	18"	18"	18"	21"
12'6"	21"	18"	18"	18"	18"	18"	18"	21"
12'0"	21"	21"	21"	21"	21"	18"	21"	
11'6"	21"	21"	21"	18"	18"	18"	21"	
11'0"	21"	18"	18"	18"	18"	18"	21"	
10'6"	21"	21"	21"	21"	21"	21"		
10'0"	21"	21"	21"	18"	18"	21"		
9'6"	21"	18"	18"	18"	18"	21"		
9'0"	18"	18"	18"	18"	18"	18"		
8'6"	21"	21"	21"	18"	21"			
8'0"	21"	18"	18"	18"	21"			
7'6"	18"	18"	18"	18"	18"			
7'0"	21"	21"	21"	21"				
6'6"	21"	18"	18"	21"				

ALL TRACK ATTACHMENT SPACING +/-2" ALLOWED WITH SYP OR SPF NO. 2 OR BETTER ONLY

REV	DESCRIPTION OF REVISIONS	DATE	BY

MAX SIZE
9' WIDTH
14' HEIGHT

DESIGN LOADS
+57.0 PSF
-67.5 PSF

TEST LOADS
(1.5 x DESIGN LOADS)
+85.5 PSF
-101.3 PSF

LARGE MISSILE
IMPACT
RESISTANCE

TX

Amarr
ENTRE/MATIC

MODEL #1200 AMARR HERITAGE 3000
MODEL #1200 AMARR OAK SUMMIT 3000
SHORT, LONG, FLUSH & OAK SUMMIT PANELS

Thomas L. Shelmerdine, PE (TX PE #85829)
Structural Solutions, PA (TX Firm #F-004063)

5921-G W. Friendly Ave., Greensboro, NC 27410

SIZE	DRAWN BY RLR	DATE 8/1/18	DRAWING NUMBER
B	CHECKED BY RLR	DATE 8/1/18	RC-1209-190-15-F
ENTRE/MATIC 165 CARRIAGE COURT WINSTON-SALEM, NC. 27105			SHEET 3 OF 3