

THE METHOD OF TESTING WAS IN SUBSTANTIAL CONFORMANCE WITH THE PROCEDURE DESCRIBED IN DASTMA 108 & 115, AND ASTM E330, E1886, E1996, & F588. THE PRESSURES SHOWN ON THE DRAWINGS WERE CALCULATED USING ASCE 7-16 WITH THE FOLLOWING PARAMETERS (5 FEET OF DOOR WIDTH IN THE END ZONE, ROOF AT ANY SLOPE):

WIND SPEED (MPH)	202	183	174	166	159
EXPOSURE LEVEL	B	C	C	D	D
MEAN ROOF HEIGHT	30'	15'	25'	15'	25'

REV	DESCRIPTION OF REVISIONS	DATE	BY
A	ADDED HERITAGE MODEL/DRAWING UPDATES	3/1/22	RLR

MAX SIZE 16' x 14'

DESIGN LOADS
+38.0 PSF
-42.0 PSF

TEST LOADS (1.5 x DESIGN LOADS)
+57.0 PSF
-63.1 PSF

LARGE MISSILE IMPACT RESISTANCE

Thomas L. Shelmerdine, PE (TX PE #85829)
Structural Solutions, PA (TX Firm #F-004063)
5921-G W. Friendly Ave., Greensboro, NC 27410 TX



This document has been digitally signed & sealed by Thomas L. Shelmerdine, PE on the date shown. Printed copies of this document are not considered signed & sealed, and the signature must be verified on any electronic copies.

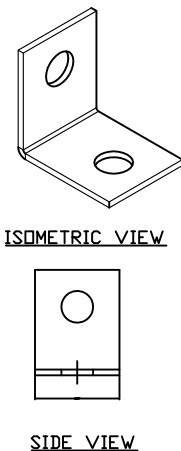
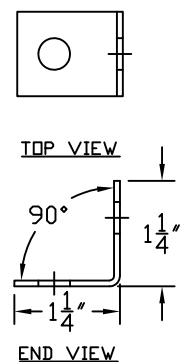
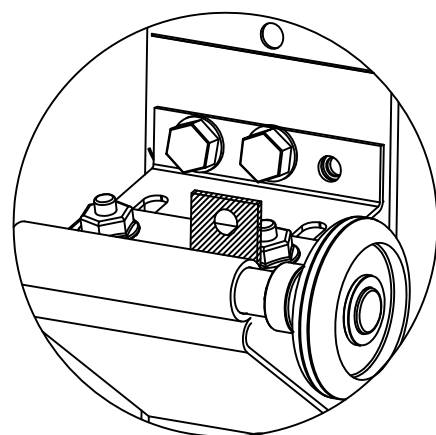
Amarr

MODEL #625 AMARR LINCOLN 1000, 2000
MODEL #675 AMARR HILLCREST 1000, 2000
MODEL #950 AMARR HERITAGE 1000, 2000

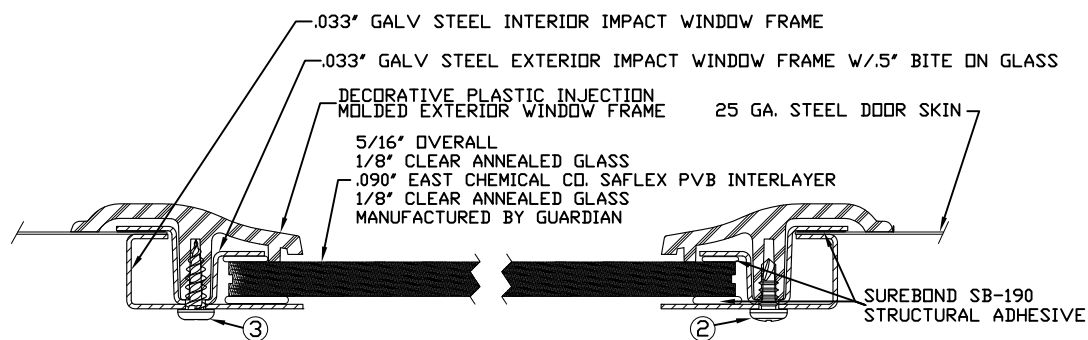
SIZE	DRAWN BY RLR	DATE 5/21/20	DRAWING NUMBER
B	CHECKED BY RLR	DATE 5/21/20	IRC-6216-156-26-1

AMARR COMPANY
165 CARRIAGE COURT WINSTON-SALEM, N.C. 27105 SHEET 1 OF 3

TOP FIXTURE ADDER PIECE

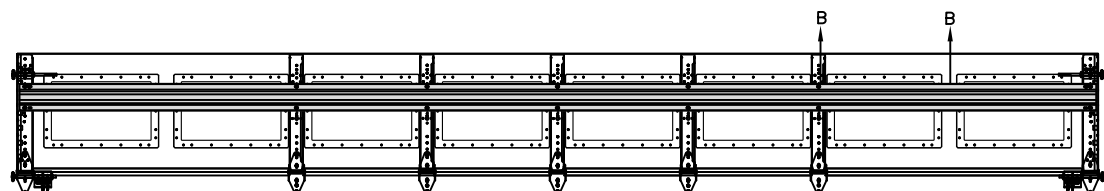


TOP FIXTURE REINFORCEMENT ILLUSTRATION

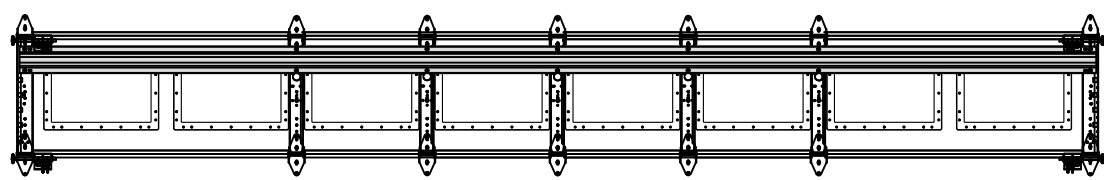


- 3/16" X 1/2" SCREW - USED TO FASTEN THE STEEL EXTERIOR IMPACT WINDOW FRAME TO THE STEEL INTERIOR IMPACT WINDOW FRAME.
- 11/64" X 1/2" SCREW - USED TO FASTEN DECORATIVE PLASTIC MOLDED WINDOW FRAME TO THE ASSEMBLY

SECTION B-B IMPACT WINDOW DETAIL
N.T.S.



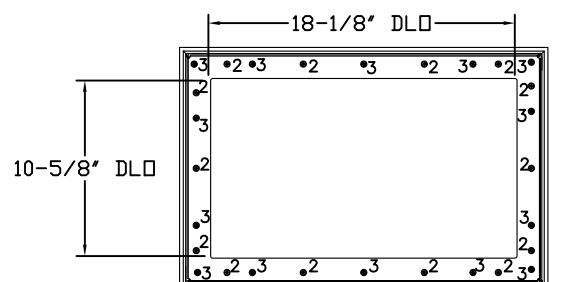
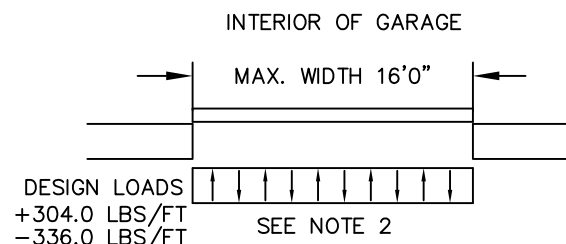
OPTIONAL SHORT PANEL TOP GLAZED SECTION (STRUT AND STILE LAYOUT)



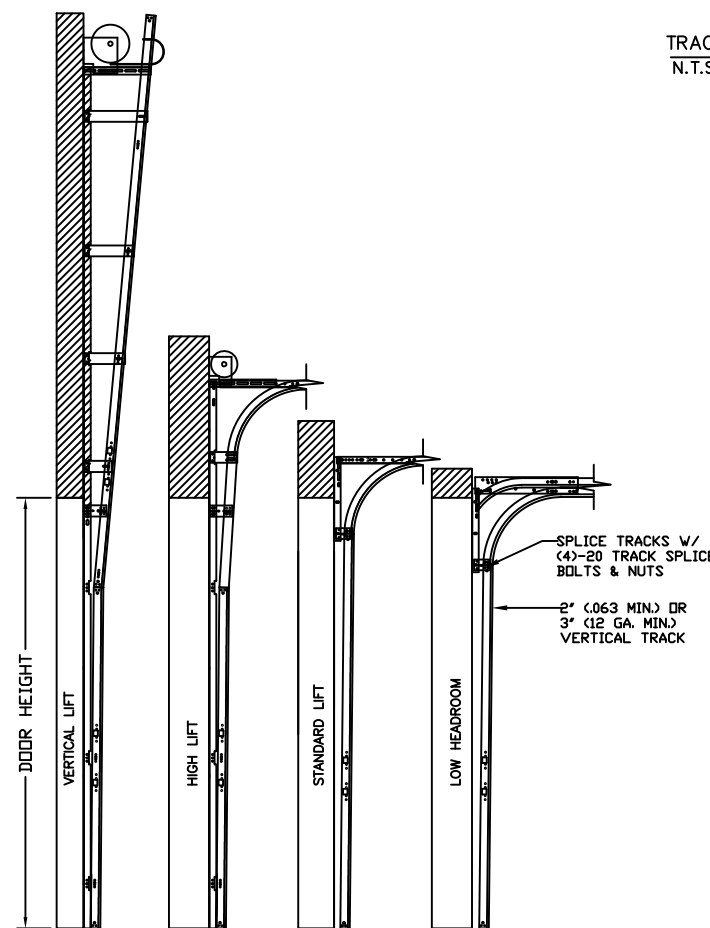
OPTIONAL SHORT PANEL INTERMEDIATE GLAZED SECTION (STRUT AND STILE LAYOUT)

SPECIFICATIONS AND NOTES

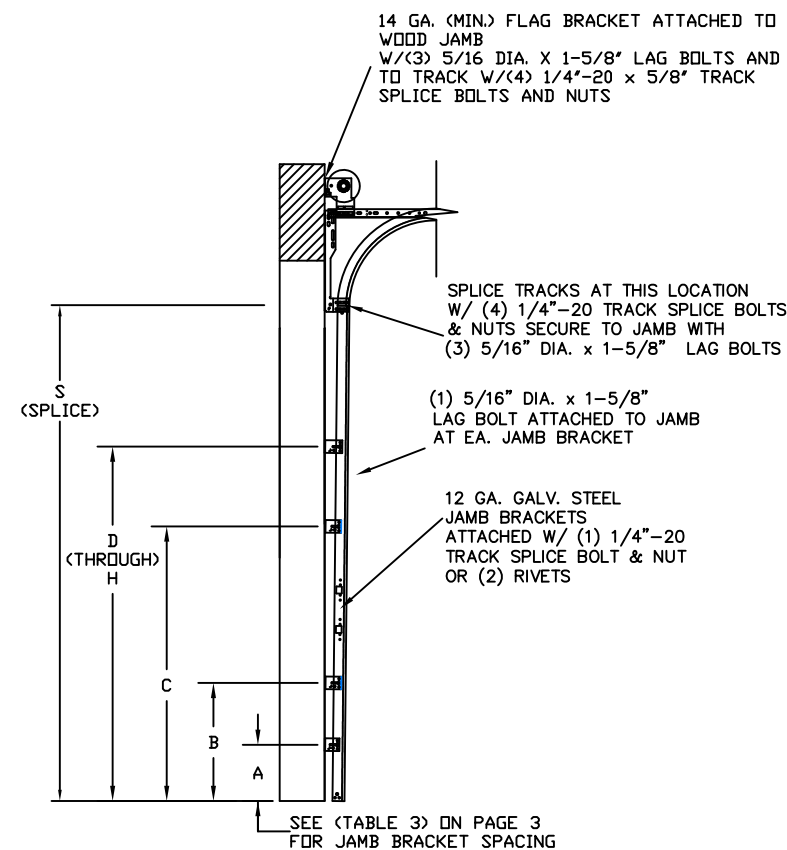
- ALL THE LOAD FROM THE DOOR IS TRANSFERRED TO THE VERTICAL TRACK, FROM THE TRACK THE LOAD IS TRANSFERRED TO THE VERTICAL JAMBS. THE HORIZONTAL JAMB OR HEADER RECEIVES NO PORTION OF THE LOAD TRANSFERRED FROM THE DOOR.
- EACH VERTICAL JAMBS RECEIVES MAXIMUM DESIGN LOADS OF: +304.0 LBS/FT & -336.0 LBS/FT
- DOOR AND HARDWARE WILL BE DESIGNED, MANUFACTURED AND INSTALLED WITH STANDARDS AS SET FORTH BY DASMA.
- DOOR SECTIONS SHALL BE 25 GA. (.019) MIN. ROLLED FORMED LIGHT COMMERCIAL QUALITY
- SEE TABLE 2 ON PAGE 3 FOR REINFORCEMENT SCHEDULE
- SUPPORTING STRUCTURAL ELEMENTS SHALL BE DESIGNED BY A REGISTERED PROFESSIONAL ENGINEER FOR WIND LOADS INDICATED ON THIS DRAWING IN ADDITION TO OTHER LOADINGS.
- REFER TO TABLES ON PAGE 3 FOR ADDITIONAL DOOR WIDTHS AND THEIR DESIGN PRESSURES
- DOOR IS MANUFACTURED AND TESTED IN ACCORDANCE WITH THE 2018 IRC/IBC



IMPACT GLAZING FASTENER DETAIL
N.T.S.



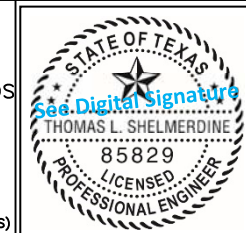
AVAILABLE TRACK CONFIGURATIONS
N.T.S.



TRACK CONFIGURATION FOR 6' UP TO 14' TALL DOORS
N.T.S.

REV	DESCRIPTION OF REVISIONS	DATE	BY
A	ADDED HERITAGE MODEL/DRAWING UPDATES	3/1/22	RLR

MAX SIZE
16' x 14'
 DESIGN LOADS
+38.0 PSF
-42.0 PSF
 TEST LOADS
(1.5 x DESIGN LOADS)
+57.0 PSF
-63.1 PSF
 LARGE MISSILE
IMPACT
RESISTANCE



This document has been digitally signed & sealed by Thomas L. Shelmerdine, PE on the date shown. Printed copies of this document are not considered signed & sealed, and the signature must be verified on any electronic copies.

Thomas L. Shelmerdine, PE (TX PE #85829)
Structural Solutions, PA (TX Firm #F-004063)
5921-G W. Friendly Ave., Greensboro, NC 27410 TX



MODEL #625 AMARR LINCOLN 1000, 2000
 MODEL #675 AMARR HILLCREST 1000, 2000
 MODEL #950 AMARR HERITAGE 1000, 2000

SIZE	DRAWN BY	RLR	DATE	5/21/20	DRAWING NUMBER
B	CHECKED BY	RLR	DATE	5/21/20	IRC-6216-156-26-1

AMARR COMPANY
165 CARRIAGE COURT WINSTON-SALEM, N.C. 27105 SHEET 2 OF 3

TABLE 1

DOOR HEIGHT	SECTION HEIGHTS							
	Btm	#2	#3	#4	#5	#6	#7	#8
14' 0"	21"	21"	21"	21"	21"	21"	21"	21"
13' 6"	21"	21"	21"	21"	21"	18"	18"	21"
13' 0"	21"	21"	21"	18"	18"	18"	18"	21"
12' 6"	21"	18"	18"	18"	18"	18"	18"	21"
12' 0"	21"	21"	21"	21"	21"	18"	21"	
11' 6"	21"	21"	21"	18"	18"	18"	21"	
11' 0"	21"	18"	18"	18"	18"	18"	21"	
10' 6"	21"	21"	21"	21"	21"	21"		
10' 0"	21"	21"	21"	18"	18"	21"		
9' 6"	21"	18"	18"	18"	18"	21"		
9' 0"	18"	18"	18"	18"	18"	18"		
8' 6"	21"	21"	21"	18"	21"			
8' 0"	21"	18"	18"	18"	21"			
7' 6"	18"	18"	18"	18"	18"			
7' 0"	21"	21"	21"	21"				
6' 6"	21"	18"	18"	21"				

TABLE 2

SECTION	STRUT SIZE
TOP	5.5"
7TH	5.5"
6TH	5.5"
5TH	5.5"
4TH	5.5"
3RD	5.5"
2ND	5.5"
BOTTOM	5.5"
	3"

WOOD JAMB ATTACHMENT TO STRUCTURE (OPTIONAL)

2 X 6 VERTICAL JAMB ATTACHMENT TO WOOD FRAME STRUCTURE
 5/16" X 3" LAG SCREWS STARTING 6" FROM ENDS
 THEN 16" O.C. (1 1/2" EMBEDMENT)

2 X 6 VERTICAL JAMB ATTACHMENT TO 2,000 PSI CONCRETE
 HILTI KWIK BOLT 3/8" X 4" STARTING 6" FROM ENDS
 THEN 24" O.C. (2 1/2" EMBEDMENT)
 HILTI SLEEVE ANCHOR 3/8" X 2-3/4" STARTING 6" FROM ENDS
 THEN 14" O.C. (1 1/4" EMBEDMENT)
 ITW/RAMSET REDHEAD (TRU-BOLT) 3/8" X 4" STARTING 6" FROM ENDS
 THEN 24" O.C. (2 1/2" EMBEDMENT)

2 X 6 VERTICAL JAMB ATTACHMENT TO HOLLOW C-90 BLOCK
 SIMPSON 1/4" X 3" TITEN SCREWS STARTING 6" FROM ENDS,
 USE PAIRS OF FASTENERS (3" APART)
 AT 8" O.C. (1 1/2" EMBEDMENT)
 HILTI 1/4" X 2-3/4" KWIK-CON II+ SCREWS STARTING 6" FROM ENDS,
 USE PAIRS OF FASTENERS (3" APART) AT 8" O.C. (1 1/4" EMBEDMENT)

2 X 6 VERTICAL JAMB ATTACHMENT TO GROUTED C-90 BLOCK (2000 PSI GROUT)
 HILTI SLEEVE ANCHOR 3/8" X 2-3/4" STARTING 6" FROM ENDS
 THEN 16" O.C. (1 1/4" EMBEDMENT)
 (OR, USE FASTENERS FOR HOLLOW C-90 BLOCK)

*LAGS AND BOLTS CAN BE COUNTERSUNK TO PROVIDE A FLUSH MOUNTING SURFACE.
 *PREPARATION OF WOOD JAMBS BY OTHERS

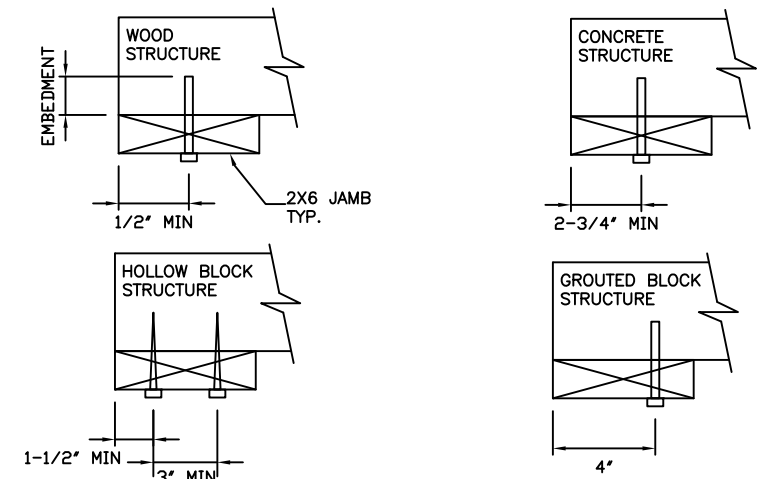


TABLE 3

DOOR HEIGHT	TRACK ATTACHMENT									
	A	B	C	D	E	F	G	H	I	
6' 6"	3.5"	10"	21"	39"	57"					
7'	3.5"	10"	21"	42"	63"					
7' 6"	3.5"	10"	18"	36"	54"	72"				
8'	3.5"	10"	21"	39"	57"	75"				
8' 6"	3.5"	10"	21"	42"	63"	81"				
9'	3.5"	10"	18"	36"	54"	72"	90"			
9' 6"	3.5"	10"	21"	39"	57"	75"	93"			
10'	3.5"	10"	21"	42"	63"	81"	99"			
10' 6"	3.5"	10"	21"	42"	63"	84"	105"			
11'	3.5"	10"	21"	39"	57"	75"	93"	111"		
11' 6"	3.5"	10"	21"	42"	63"	81"	99"	117"		
12'	3.5"	10"	21"	42"	63"	84"	105"	123"		
12' 6"	3.5"	10"	21"	39"	57"	75"	93"	111"	129"	
13'	3.5"	10"	21"	42"	63"	81"	99"	117"	135"	
13' 6"	3.5"	10"	21"	42"	63"	84"	105"	123"	141"	
14'	3.5"	10"	21"	42"	63"	84"	105"	126"	147"	

ALL TRACK AND ATTACHMENT SPACING +/- 2" ALLOWED WITH SYP OR SPF NO. 2 OR BETTER ONLY

TABLE 4

Section Width (ft)	Panel Type	Center Stile Locations (Measured from Left Edge)					
		1st (in)	2st (in)	3rd (in)	4th (in)	5th (in)	6th (in)
10' 0"	Short	25.22	48.41	71.59	94.78		
10' 0"	Long	30.00	60.00	90.00			
10' 0"	Bead Board	30.63	60.00	89.38			
12' 0"	Short	25.62	48.81	72.00	95.19	118.38	
12' 0"	Long	27.25	49.63	72.00	94.38	116.75	
12' 0"	Bead Board	24.63	48.31	72.00	95.69	119.38	
12' 2"	Short	26.27	49.64	73.00	96.36	119.73	
12' 2"	Long	27.17	50.08	73.00	95.92	118.83	
12' 2"	Bead Board	25.13	49.06	73.00	96.94	120.88	
12' 4"	Short	27.27	50.64	74.00	97.36	120.73	
12' 4"	Long	28.17	51.08	74.00	96.92	119.83	
12' 4"	Bead Board	25.63	49.81	74.00	98.19	122.38	
12' 6"	Short	26.34	50.67	75.00	99.33	123.66	
12' 6"	Long	27.34	51.17	75.00	98.83	122.66	
12' 6"	Bead Board	26.13	50.56	75.00	99.44	123.88	
12' 8"	Short	27.34	51.67	76.00	100.33	124.66	
12' 8"	Long	28.20	52.10	76.00	99.90	123.80	
12' 8"	Bead Board	26.63	51.31	76.00	100.69	125.38	
12' 10"	Short	27.50	52.25	77.00	101.75	126.50	
12' 10"	Long	29.20	53.10	77.00	100.90	124.80	
12' 10"	Bead Board	27.13	52.06	77.00	101.94	126.88	
13' 0"	Short	28.00	53.00	78.00	103.00	128.00	
13' 0"	Long	30.20	54.10	78.00	101.90	125.80	
13' 0"	Bead Board	27.63	52.81	78.00	103.19	128.38	
13' 2"	Short	29.00	54.00	79.00	104.00	129.00	
13' 2"	Long	31.20	55.10	79.00	102.90	126.80	
13' 2"	Bead Board	28.13	53.56	79.00	104.44	129.88	
13' 4"	Short	28.80	54.40	80.00	105.60	131.20	
13' 4"	Long	29.80	54.90	80.00	105.10	130.20	
13' 4"	Bead Board	28.63	54.31	80.00	105.69	131.38	
13' 6"	Short	29.80	55.40	81.00	106.60	132.20	
13' 6"	Long	30.80	55.90	81.00	106.10	131.20	
13' 6"	Bead Board	29.13	55.06	81.00	106.94	132.88	
13' 8"	Short	30.80	56.40	82.00	107.60	133.20	
13' 8"	Long	31.25	56.63	82.00	107.38	132.75	
13' 8"	Bead Board	29.63	55.81	82.00	108.19	134.38	
13' 10"	Short	31.39	57.16	82.94	108.71	134.49	
13' 10"	Long	31.34	57.17	83.00	108.83	134.66	
13' 10"	Bead Board	30.13	56.56	83.00	109.44	135.88	
14' 0"	Short	31.59	57.76	83.94	110.11	136.29	
14' 0"	Long	33.25	58.63	84.00	109.38	134.75	
14' 0"	Bead Board	30.63	57.31	84.00	110.69	137.38	
14' 2"	Short	32.75	58.85	84.94	111.41	137.89	
14' 2"	Long	33.34	59.17	85.00	110.83	136.66	
14' 2"	Bead Board	31.13	58.06	85.00	111.94	138.88	
14' 4"	Short	32.39	59.16	85.94	112.71	139.49	
14' 4"	Long	34.34	60.17	86.00	111.83	137.66	
14' 4"	Bead Board	31.63	58.81	86.00	113.19	140.38	
14' 6"	Short	32.79	59.86	86.94	114.01	141.09	
14' 6"	Long	35.34	61.17	87.00	112.83	138.66	
14' 6"	Bead Board	32.13	59.56	87.00	114.44	141.88	
14' 8"	Short	33.19	60.56	87.94	115.31	142.69	
14' 8"	Long	44.81	66.41	88.00	109.59	131.19	
14' 8"	Bead Board	32.63	60.31	88.00	115.69	143.38	
14' 10"	Short	33.59	61.26	88.94	116.61	144.29	
14' 10"	Long	45.60	67.30	89.00	110.70	132.40	
14' 10"	Bead Board	33.13	61.06	89.00	116.94	144.88	
15' 0"	Short	46.60	68.30	90.00	111.70	133.40	
15' 0"	Bead Board	33.63	61.81	90.00	118.19	146.38	
15' 2"	Short	62.66	76.80	90.94	105.08	119.21	
15' 2"	Long	47.60	69.30	91.00	112.70	134.40	
15' 2"	Bead Board	34.13	62.56	91.00	119.44	147.88	
15' 4"	Short	28.00	53.60	79.20	104.80	130.40	156.00
15' 4"	Long	47.25	69.63	92.00	114.38	136.75	
15' 4"	Bead Board	34.63	63.31	92.00	120.69	149.38	
15' 6"	Short	46.62	69.81	93.00	116.19	139.38	
15' 6"	Long	47.60	70.30	93.00	115.70	138.40	
15' 6"	Bead Board	47.42	70.21	93.00	115.79	138.58	
15' 8"	Short	47.62	70.81	94.00	117.19	140.38	
15' 8"	Long	48.60	71.30	94.00	116.70	139.40	
15' 8"	Bead Board	48.02	71.01	94.00	116.99	139.98	
15' 10"	Short	48.62	71.81	95.00	118.19	141.38	
15' 10"	Long	49.17	72.08	95.00	117.92	140.83	
15' 10"	Bead Board	48.62	71.81	95.00	118.19	141.38	
16' 0"	Short	49.62	72.81	96.00	119.19	142.38	
16' 0"	Long	50.60	73.30	96.00	118.70	141.40	
16' 0"	Bead Board	48.42	72.21	96.00	119.79	143.58	

TABLE 4 (CONTINUED)

Section Width (ft)	Panel Type	Center Stile Locations (Measured from Left Edge)					
		1st (in)	2st (in)	3rd (in)	4th (in)	5th (in)	6th (in)
14' 0"	Short	31.59	57.76	83.94	110.11	136.29	
14' 0"	Long	33.25	58.63	84.00	109.38	134.75	
14' 0"	Bead Board	30.63	57.31	84.00	110.69	137.38	
14' 2"	Short	32.75	58.85	84.94	111.41	137.89	
14' 2"	Long	33.34	59.17	85.00	110.83	136.66	
14' 2"	Bead Board	31.13	58.06	85.00	111.94	138.88	
14' 4"	Short	32.39	59.16	85.94	112.71	139.49	
14' 4"	Long	34.34	60.17	86.00	111.83	137.66	
14' 4"	Bead Board	31.63	58.81	86.00	113.19	140.38	
14' 6"	Short	32.79	59.86	86.94	114.01	141.09	
14' 6"	Long	35.34	61.17	87.00	112.83	138.66	
14' 6"	Bead Board	32.13	59.56	87.00	114.44	141.88	
14' 8"	Short	33.19	60.56	87.94	115.31	142.69	
14' 8"	Long	44.81	66.41	88.00	109.59	131.19	
14' 8"	Bead Board	32.63	60.31	88.00	115.69	143.38	
14' 10"	Short	33.59	61.26	88.94	116.61	144.29	
14' 10"	Long	45.60	67.30	89.00	110.70	132.40	
14' 10"	Bead Board	33.13	61.06	89.00	116.94	144.88	
15' 0"	Short	46.60	68.30	90.00	111.70	133.40	
15' 0"	Bead Board	33.63	61.81	90.00	118.19	146.38	
15' 2"	Short	62.66	76.80	90.94	105.08	119.21	
15' 2"	Long	47.60	69.30	91.00	112.70	134.40	
15' 2"	Bead Board	34.13	62.56	91.00	119.44	147.88	
15' 4"	Short	28.00	53.60	79.20	104.80	130.40	156.00
15' 4"	Long	47.25	69.63	92.00	114.38	136.75	
15' 4"	Bead Board	34.63	63.31	92.00	120.69	149.38	
15' 6"	Short	46.62	69.81	93.00	116.19	139.38	
15' 6"	Long	47.60	70.30	93.00	115.70	138.40	
15' 6"	Bead Board	47.42	70.21	93.00	115.79	138.58	
15' 8"	Short	47					