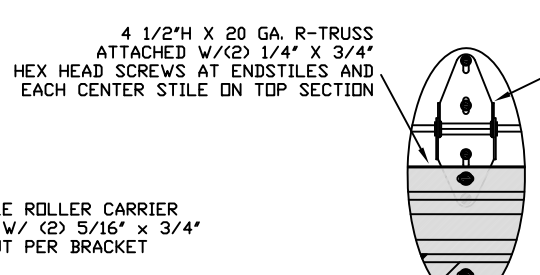


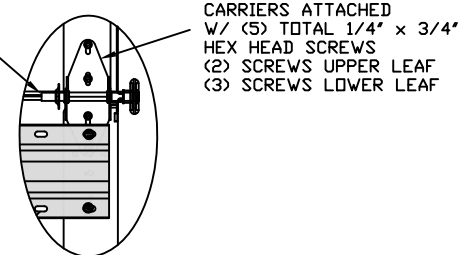
TYPICAL TOP FIXTURES  
N.T.S. 1



TYPICAL CENTER HINGE  
N.T.S. 2

14GA. (MIN.) CENTER HINGE ATTACHED W/ A TOTAL OF (5) 1/4\"/>

2\"/>



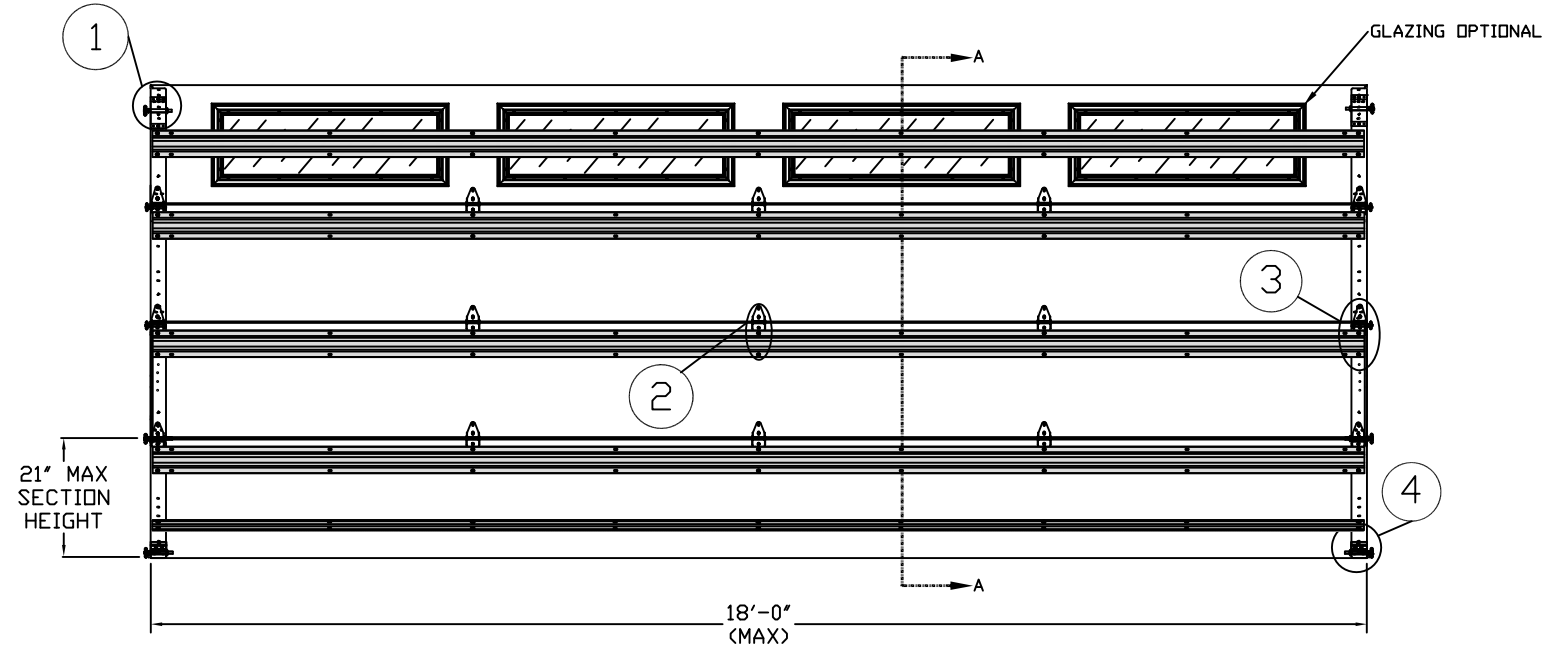
TYPICAL END HINGE  
N.T.S. 3

THE METHOD OF TESTING WAS IN SUBSTANTIAL CONFORMANCE WITH THE PROCEDURE DESCRIBED IN DASMA 108 & 115, ASTM E330, E1886, E1996, & F588. THE PRESSURES SHOWN ON THE DRAWINGS WERE CALCULATED USING ASCE 7-16 WITH THE FOLLOWING PARAMETERS (5 FEET OF DOOR WIDTH IN THE END ZONE, ROOF AT ANY SLOPE):

WIND SPEED (MPH)	168	152	145	138	133
EXPOSURE LEVEL	B	C	C	D	D
MEAN ROOF HEIGHT	30'	15'	25'	15'	25'

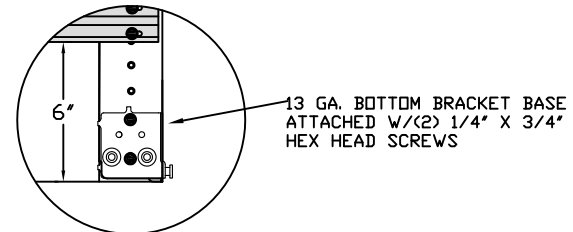
**SPECIFICATIONS AND NOTES**

- DOORS AND HARDWARE WILL BE DESIGNED, MANUFACTURED AND INSTALLED WITH STANDARDS AS SET FORTH BY DASMA. EACH VERTICAL JAMBS RECEIVES MAXIMUM DESIGN LOADS OF: +228.6 LBS/FT & -258.3 LBS/FT
- DOOR SECTIONS SHALL BE 27 GA. MIN. (.0151") ROLLED FORMED LIGHT COMMERCIAL QUALITY
- SUPPORTING STRUCTURAL ELEMENTS SHALL BE DESIGNED BY A REGISTERED PROFESSIONAL ENGINEER FOR WIND LOADS INDICATED ON THIS DRAWING IN ADDITION TO OTHER LOADINGS.
- DOOR IS MANUFACTURED AND TESTED IN ACCORDANCE WITH THE 2018 IRC/IBC.

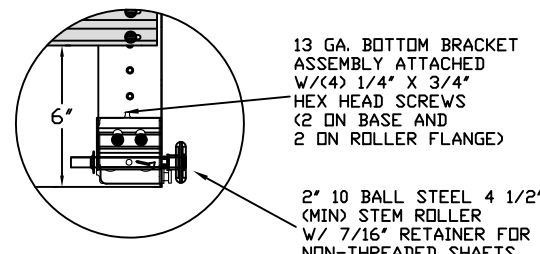


INSIDE ELEVATION  
N.T.S.

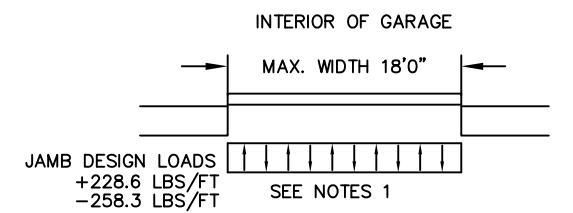
**LARGE MISSILE IMPACT RESISTANT**



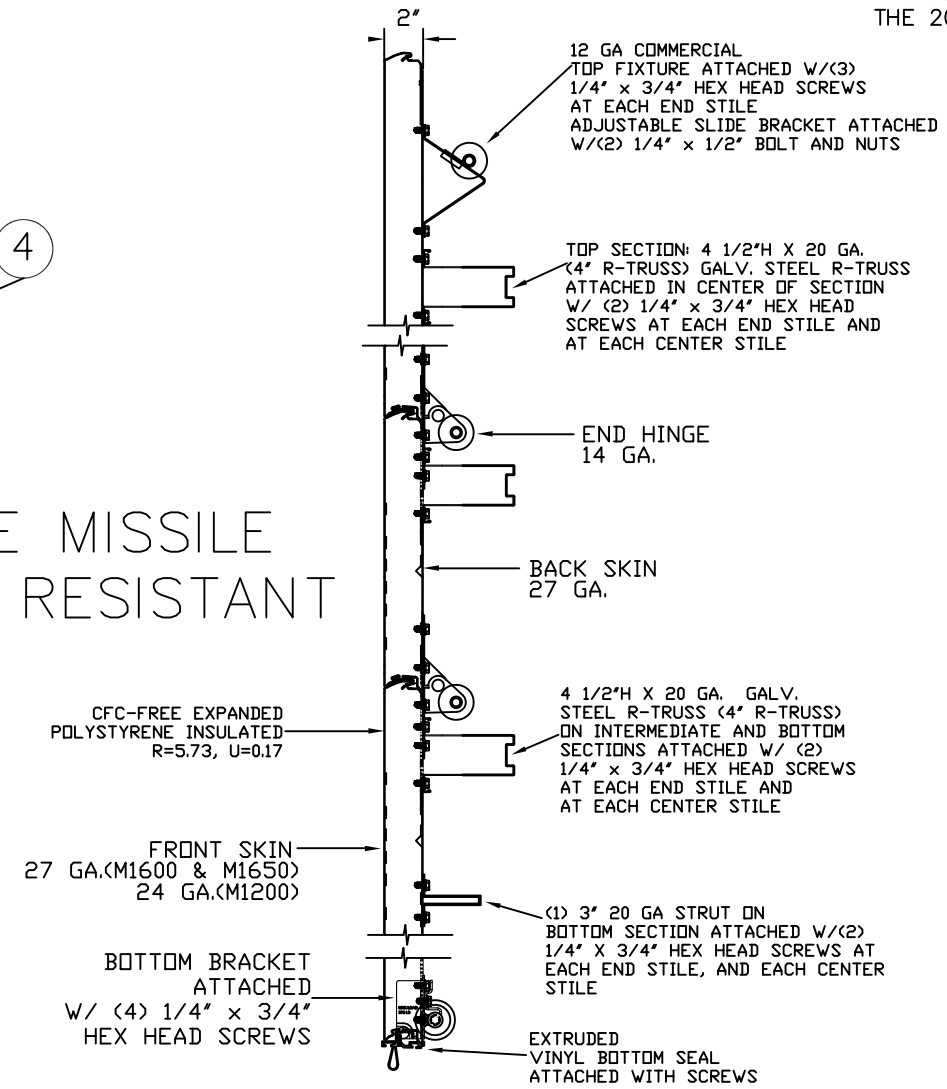
TRBB-375 BOTTOM BRACKET  
N.T.S. 4A



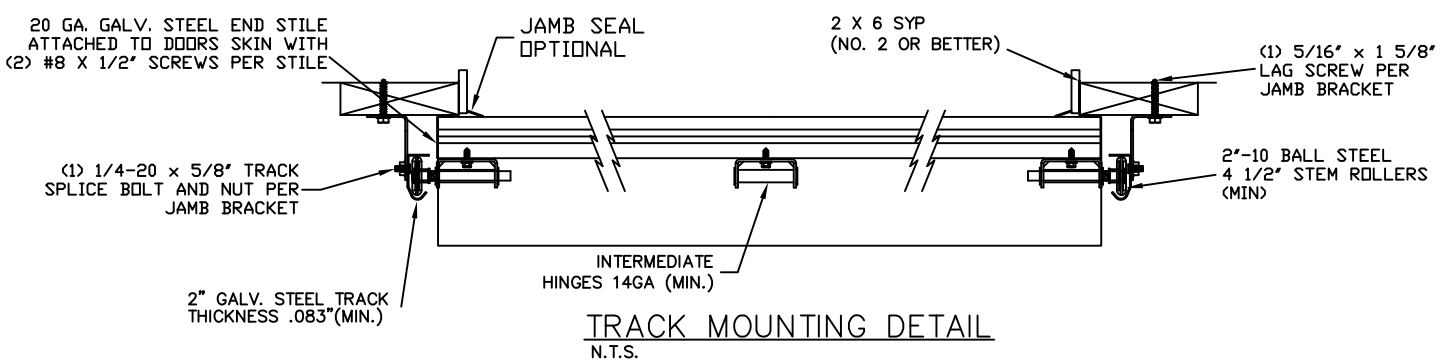
TRBB-375 BOTTOM BRACKET  
N.T.S. 4B



JAMB DESIGN LOADS  
+228.6 LBS/FT  
-258.3 LBS/FT  
SEE NOTES 1



SECTION A-A (SIDE VIEW)  
N.T.S.



TRACK MOUNTING DETAIL  
N.T.S.

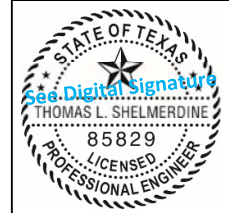
REV	DESCRIPTION OF REVISIONS	DATE	BY
A	ADDED GLAZING OPTIONS	10/21/13	RLR
B	ADDED HERITAGE MODEL/DRAWING UPDATES	2/28/22	RLR

MAX SIZE  
18' WIDTH  
14' HEIGHT

DESIGN LOADS  
+25.4 PSF  
-28.7 PSF

TEST LOADS  
+38.1 PSF  
-43.05 PSF

LARGE MISSILE IMPACT RESISTANT



This document has been digitally signed & sealed by Thomas L. Shelmerdine, PE on the date shown. Printed copies of this document are not considered signed & sealed, and the signature must be verified on any electronic copies.

Thomas L. Shelmerdine, PE (TX PE #85829)  
Structural Solutions, PA (TX Firm #F-004063)  
5921-G W. Friendly Ave., Greensboro, NC 27410 TX



MODEL #1600 AMARR LINCOLN 3000  
MODEL #1650 AMARR HILLCREST 3000  
MODEL #1200 AMARR HERITAGE 3000

SIZE	DRAWN BY	DATE	DRAWING NUMBER
B	RLR	12/15/11	IRC-1618-130-24-1

AMARR COMPANY  
165 CARRIAGE COURT WINSTON-SALEM, N.C. 27105 SHEET 1 OF 3

TABLE 1

DOOR HEIGHT	TRACK ATTACHMENT								SPLICE
	A	B	C	D	E	F	G	H	
6' 6"	3.5"	21"	39"	57"					70"
7'	3.5"	21"	42"	63"					76"
7' 6"	3.5"	18"	36"	54"	72"				82"
8'	3.5"	21"	39"	57"	75"				88"
8' 6"	3.5"	21"	42"	63"	81"				94"
9'	3.5"	18"	36"	54"	72"	90"			100"
9' 6"	3.5"	21"	39"	57"	75"	93"			106"
10'	3.5"	21"	42"	63"	81"	99"			112"
10' 6"	3.5"	21"	42"	63"	84"	105"			118"
11'	3.5"	21"	39"	57"	75"	93"	111"		124"
11' 6"	3.5"	21"	42"	63"	81"	99"	117"		130"
12'	3.5"	21"	42"	63"	84"	105"	123"		136"
12' 6"	3.5"	21"	39"	57"	75"	93"	111"	129"	142"
13'	3.5"	21"	42"	63"	81"	99"	117"	135"	148"
13' 6"	3.5"	21"	42"	63"	84"	105"	123"	141"	154"
14'	3.5"	21"	42"	63"	84"	105"	126"	147"	160"

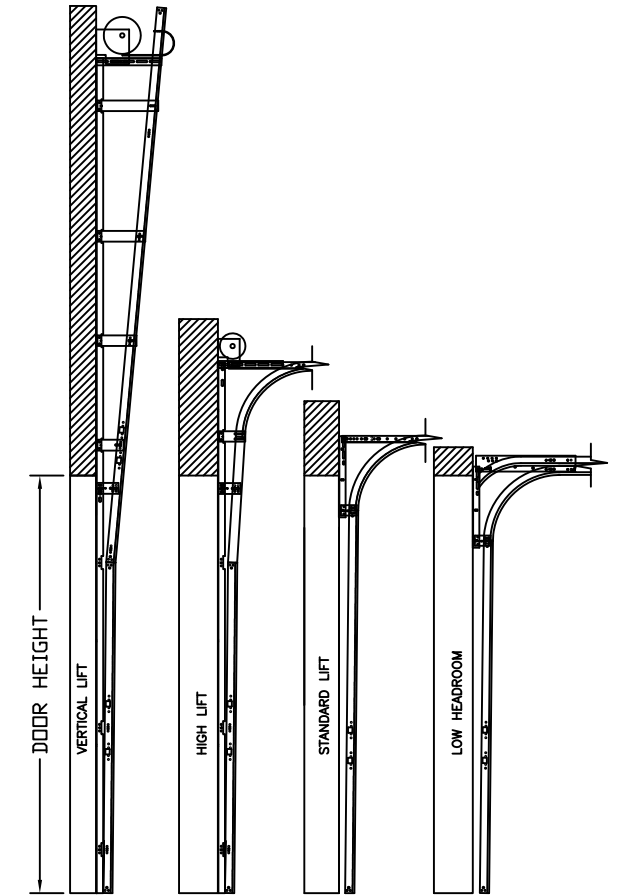
ALL TRACK ATTACHMENT SPACING +/-2" WITH SYP NO. 2 OR BETTER ONLY

TABLE 2

DOOR HEIGHT	SECTION HEIGHTS							
	Btm	#2	#3	#4	#5	#6	#7	#8
14' 0"	21"	21"	21"	21"	21"	21"	21"	21"
13' 6"	21"	21"	21"	21"	21"	18"	18"	21"
13' 0"	21"	21"	21"	18"	18"	18"	18"	21"
12' 6"	21"	18"	18"	18"	18"	18"	18"	21"
12' 0"	21"	21"	21"	21"	21"	18"	21"	
11' 6"	21"	21"	21"	18"	18"	18"	21"	
11' 0"	21"	18"	18"	18"	18"	18"	21"	
10' 6"	21"	21"	21"	21"	21"	21"		
10' 0"	21"	21"	21"	18"	18"	21"		
9' 6"	21"	18"	18"	18"	18"	21"		
9' 0"	18"	18"	18"	18"	18"	18"		
8' 6"	21"	21"	21"	18"	21"			
8' 0"	21"	18"	18"	18"	21"			
7' 6"	21"	21"	21"	21"				
7' 0"	21"	21"	21"	21"				
6' 6"	21"	18"	18"	21"				

TABLE 3

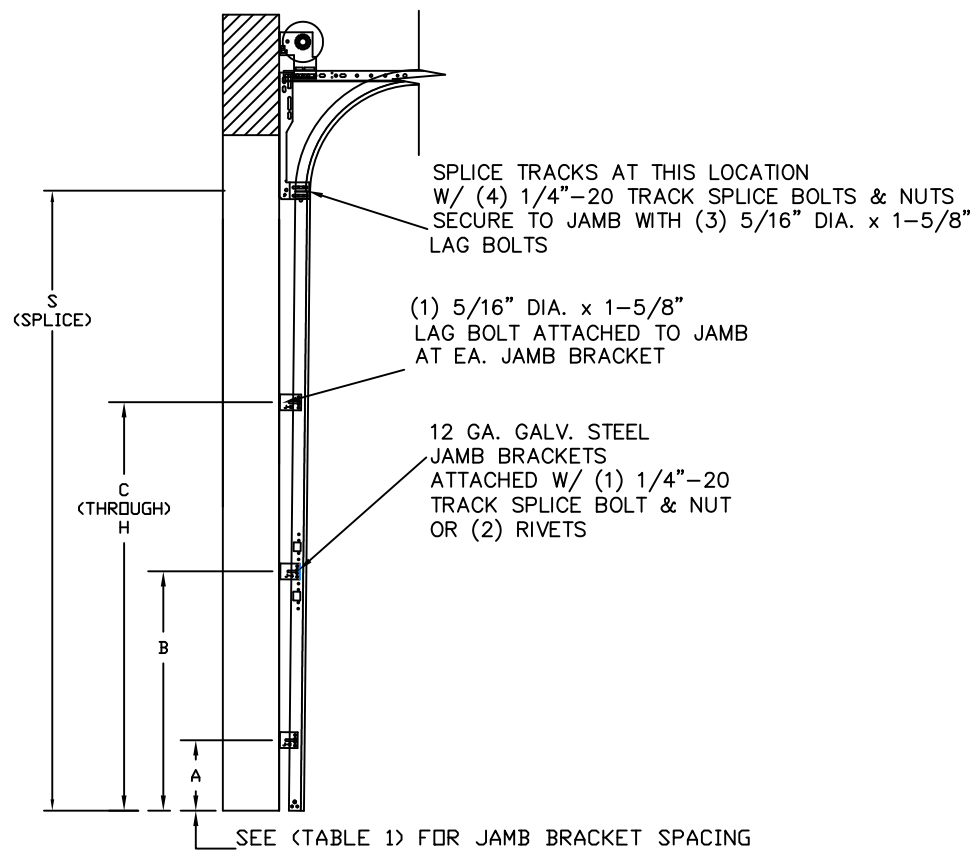
Section Width (ft)	Panel Type	Center Stile Locations (Measured from Left Edge)		
		1st (in)	3rd (in)	5th (in)
16' 2"	Short	50.27	97.00	143.73
16' 2"	Long	51.17	97.00	142.83
16' 2"	Bead Board	48.75	97.00	145.25
16' 4"	Short	51.27	98.00	144.73
16' 4"	Long	52.17	98.00	143.83
16' 4"	Bead Board	49.08	98.00	146.92
16' 6"	Short	52.27	99.00	145.73
16' 6"	Long	51.34	99.00	146.66
16' 6"	Bead Board	49.42	99.00	148.59
16' 8"	Short	51.34	100.00	148.66
16' 8"	Long	52.20	100.00	147.80
16' 8"	Bead Board	49.92	100.00	150.09
16' 10"	Short	51.50	101.00	150.50
16' 10"	Long	53.20	101.00	148.80
16' 10"	Bead Board	50.15	101.00	151.59
17' 0"	Short	53.34	102.00	150.66
17' 0"	Long	54.20	102.00	149.80
17' 0"	Bead Board	50.92	102.00	153.09
17' 2"	Short	53.00	103.00	153.00
17' 2"	Long	55.20	103.00	150.80
17' 2"	Bead Board	51.42	103.00	154.59
17' 4"	Short	54.00	104.00	154.00
17' 4"	Long	56.20	104.00	151.80
17' 4"	Bead Board	51.92	104.00	156.09
17' 6"	Short	55.00	105.00	155.00
17' 6"	Long	57.20	105.00	152.80
17' 6"	Bead Board	52.42	105.00	157.59
17' 8"	Short	54.80	106.00	157.20
17' 8"	Long	55.80	106.00	156.20
17' 8"	Bead Board	52.92	106.00	159.09
17' 10"	Short	55.80	107.00	158.20
17' 10"	Long	56.25	107.00	157.75
17' 10"	Bead Board	53.42	107.00	160.59
18' 0"	Short	57.25	108.00	158.75
18' 0"	Long	57.80	108.00	158.20
18' 0"	Bead Board	53.92	108.00	162.09



AVAILABLE TRACK CONFIGURATIONS  
N.T.S.

TABLE 4

SECTION	STRUT SIZE
TOP	4.5"
7TH	4.5"
6TH	4.5"
5TH	4.5"
4TH	4.5"
3RD	4.5"
2ND	4.5"
BOTTOM	4.5" 3"



TRACK CONFIGURATION FOR 6'6" UP TO 14' TALL DOORS  
N.T.S.

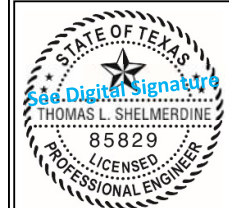
REV	DESCRIPTION OF REVISIONS	DATE	BY
A	ADDED GLAZING OPTIONS	10/21/13	RLR
B	ADDED HERITAGE MODEL/DRAWING UPDATES	2/28/22	RLR

MAX SIZE  
18' WIDTH  
14' HEIGHT

DESIGN LOADS  
+25.4 PSF  
-28.7 PSF

TEST LOADS  
+38.1 PSF  
-43.05 PSF

LARGE MISSILE  
IMPACT  
RESISTANT



This document has been digitally signed & sealed by Thomas L. Shelmerdine, PE on the date shown. Printed copies of this document are not considered signed & sealed, and the signature must be verified on any electronic copies.

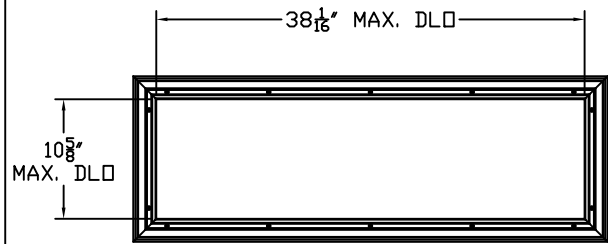
Thomas L. Shelmerdine, PE (TX PE #85829)  
Structural Solutions, PA (TX Firm #F-004063)  
5921-G W. Friendly Ave., Greensboro, NC 27410 TX

**Amarr**

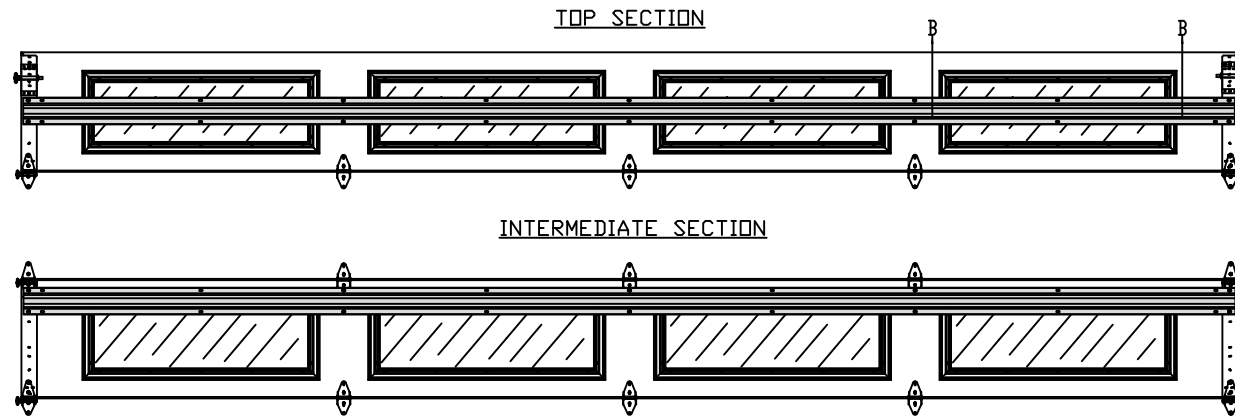
MODEL #1600 AMARR LINCOLN 3000  
MODEL #1650 AMARR HILLCREST 3000  
MODEL #1200 AMARR HERITAGE 3000

SIZE	DRAWN BY	RLR	DATE	12/15/11	DRAWING NUMBER
B	CHECKED BY	RLR	DATE	12/15/11	IRC-1618-130-24-1

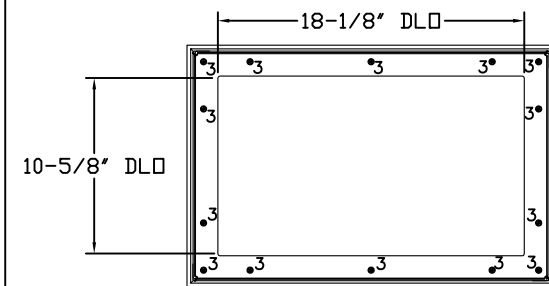
AMARR COMPANY  
165 CARRIAGE COURT WINSTON-SALEM, N.C. 27105 SHEET 2 OF 3



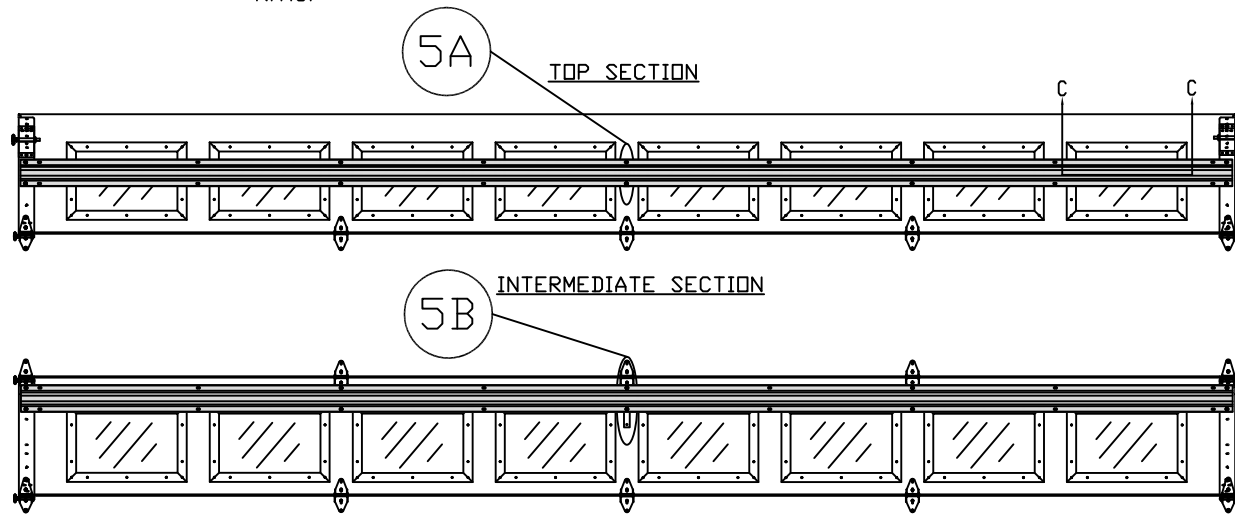
LONG PANEL GLAZING FASTENER DETAIL  
N.T.S.



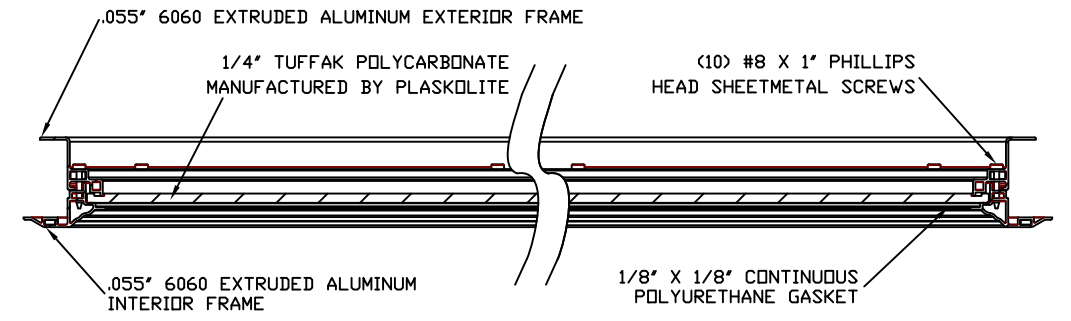
OPTIONAL LONG PANEL GLAZED SECTION R-TRUSS AND STILE LAYOUT  
N.T.S.



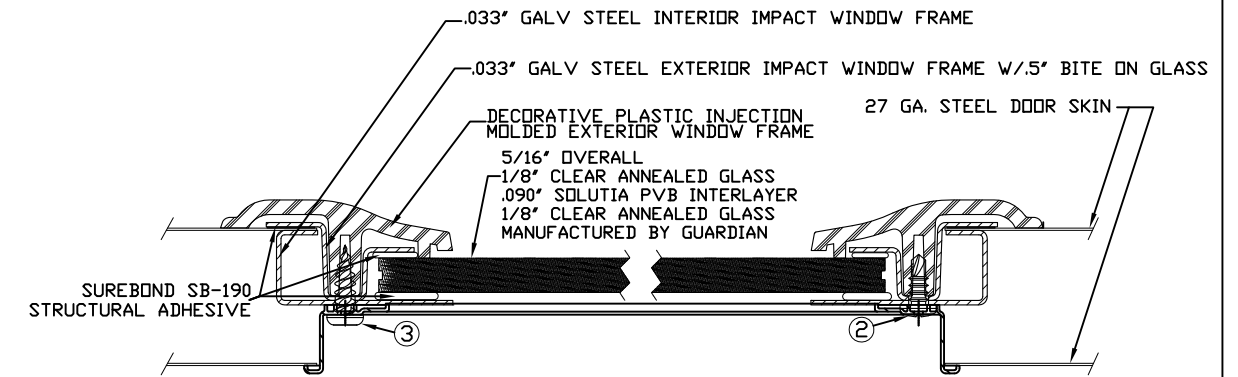
IMPACT GLAZING FASTENER DETAIL  
N.T.S.  
GLAZING MEETS ASTM E1300-04



OPTIONAL SHORT PANEL GLAZED SECTION R-TRUSS AND STILE LAYOUT  
N.T.S.



SECTION B-B IMPACT WINDOW DETAIL  
N.T.S.



2. 3/16" X 1/2" SCREW - USED TO FASTEN THE STEEL EXTERIOR IMPACT WINDOW FRAME TO THE STEEL INTERIOR IMPACT WINDOW FRAME.
3. 11/64" X 1/2" SCREW - USED TO FASTEN DECORATIVE PLASTIC MOLDED WINDOW FRAME TO THE ASSEMBLY

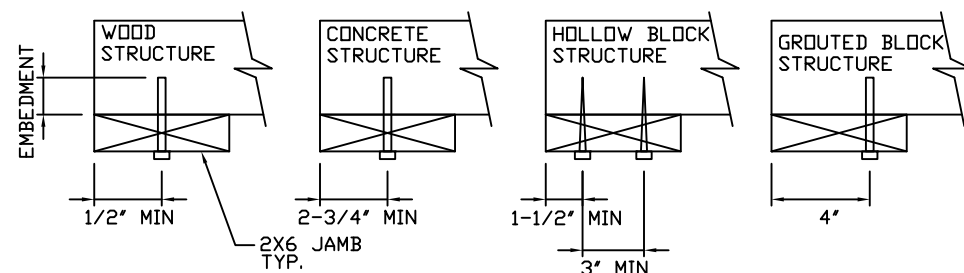
SECTION C-C IMPACT WINDOW DETAIL  
N.T.S.

### WOOD JAMB ATTACHMENT TO STRUCTURE

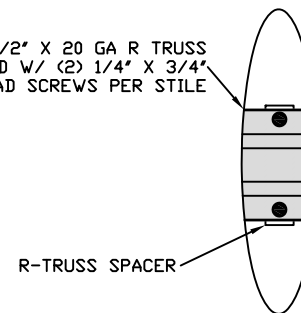
- 2 X 6 VERTICAL JAMB ATTACHMENT TO WOOD FRAME STRUCTURE  
5/16" X 3" LAG SCREWS STARTING 6" FROM ENDS THEN 20" O.C. (1 1/2" EMBEDMENT)
- 2 X 6 VERTICAL JAMB ATTACHMENT TO 2,000 PSI CONCRETE  
HILTI KWIK BOLT 3/8" X 4" STARTING 6" FROM ENDS THEN 24" O.C. (2 1/2" EMBEDMENT)
- HILTI SLEEVE ANCHOR 3/8" X 2-3/4" STARTING 6" FROM ENDS THEN 18" O.C. (1 1/4" EMBEDMENT)
- ITW/RAMSET REDHEAD (TRU-BOLT) 3/8" X 4" STARTING 6" FROM ENDS THEN 24" O.C. (2 1/2" EMBEDMENT)
- 2 X 6 VERTICAL JAMB ATTACHMENT TO HOLLOW C-90 BLOCK  
SIMPSON 1/4" X 3" TITEN SCREWS STARTING 6" FROM ENDS, USE PAIRS OF FASTENERS (3" APART) AT 8" O.C. (1 1/2" EMBEDMENT)
- HILTI 1/4" X 2-3/4" KWIK-CON II+ SCREWS STARTING 6" FROM ENDS, USE PAIRS OF FASTENERS (3" APART) AT 8" O.C. (1 1/4" EMBEDMENT)

- 2 X 6 VERTICAL JAMB ATTACHMENT TO GROUTED C-90 BLOCK (2000 PSI GROUT)  
HILTI SLEEVE ANCHOR 3/8" X 2-3/4" STARTING 6" FROM ENDS THEN 22" O.C. (1 1/4" EMBEDMENT) (OR, USE FASTENERS FOR HOLLOW C-90 BLOCK)

- \*LAGS AND BOLTS CAN BE COUNTERSUNK TO PROVIDE A FLUSH MOUNTING SURFACE.
- \*PREPARATION OF WOOD JAMBS BY OTHERS

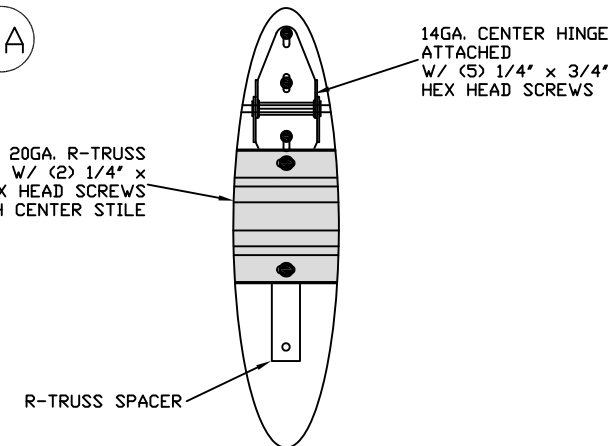


4 1/2" X 20 GA R TRUSS ATTACHED W/ (2) 1/4" X 3/4" HEX HEAD SCREWS PER STILE



R-TRUSS SPACER  
N.T.S. 5A

4 1/2" 20GA. R-TRUSS ATTACHED W/ (2) 1/4" X 3/4" HEX HEAD SCREWS AT EACH CENTER STILE



R-TRUSS SPACER  
N.T.S. 5B

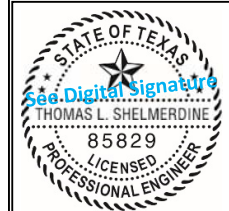
REV	DESCRIPTION OF REVISIONS	DATE	BY
A	ADDED GLAZING OPTIONS	10/21/13	RLR
B	ADDED HERITAGE MODEL/DRAWING UPDATES	2/28/22	RLR

MAX SIZE  
18" WIDTH  
14" HEIGHT

DESIGN LOADS  
+25.4 PSF  
-28.7 PSF

TEST LOADS  
+38.1 PSF  
-43.05 PSF

LARGE MISSILE IMPACT RESISTANT



This document has been digitally signed & sealed by Thomas L. Shelmerdine, PE on the date shown. Printed copies of this document are not considered signed & sealed, and the signature must be verified on any electronic copies.

Thomas L. Shelmerdine, PE (TX PE #85829)  
Structural Solutions, PA (TX Firm #F-004063)  
5921-G W. Friendly Ave., Greensboro, NC 27410 TX

# Amarr

MODEL #1600 AMARR LINCOLN 3000  
MODEL #1650 AMARR HILLCREST 3000  
MODEL #1200 AMARR HERITAGE 3000

SIZE	DRAWN BY	RLR	DATE	12/15/11	DRAWING NUMBER
B	CHECKED BY	RLR	DATE	12/15/11	IRC-1618-130-24-1

AMARR COMPANY  
165 CARRIAGE COURT WINSTON-SALEM, N.C. 27105 SHEET 3 OF 3