

8

7

6

5

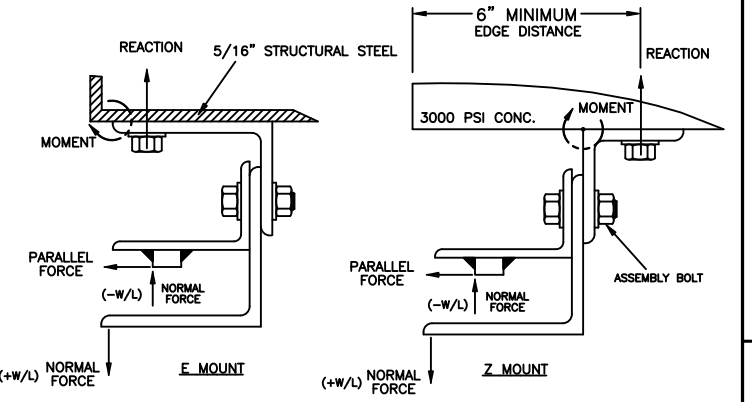
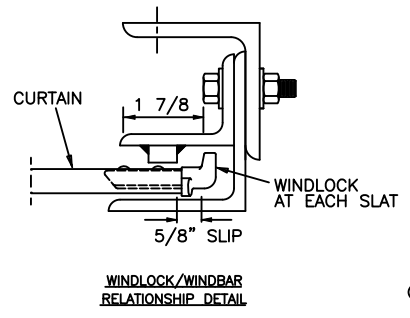
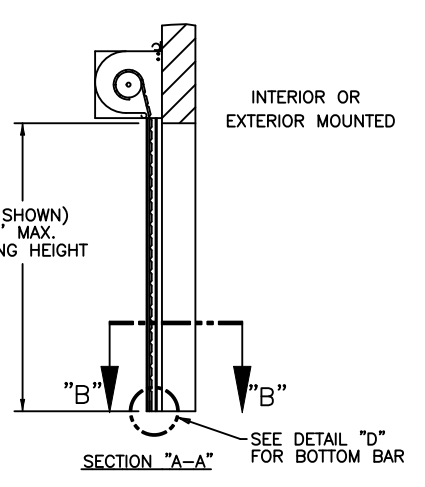
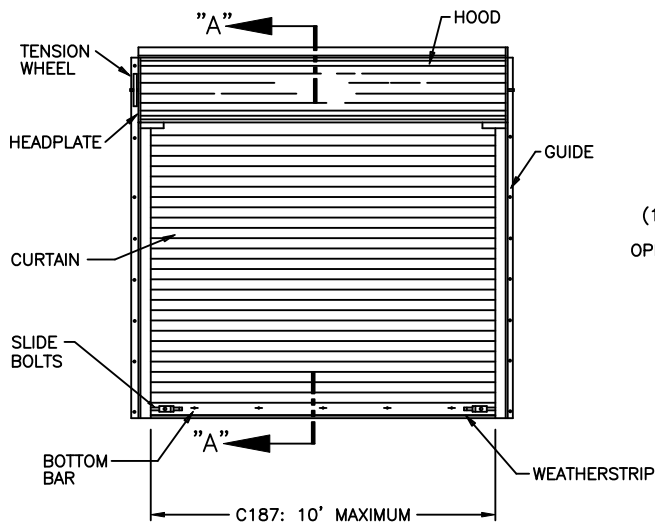
4

3

2

1

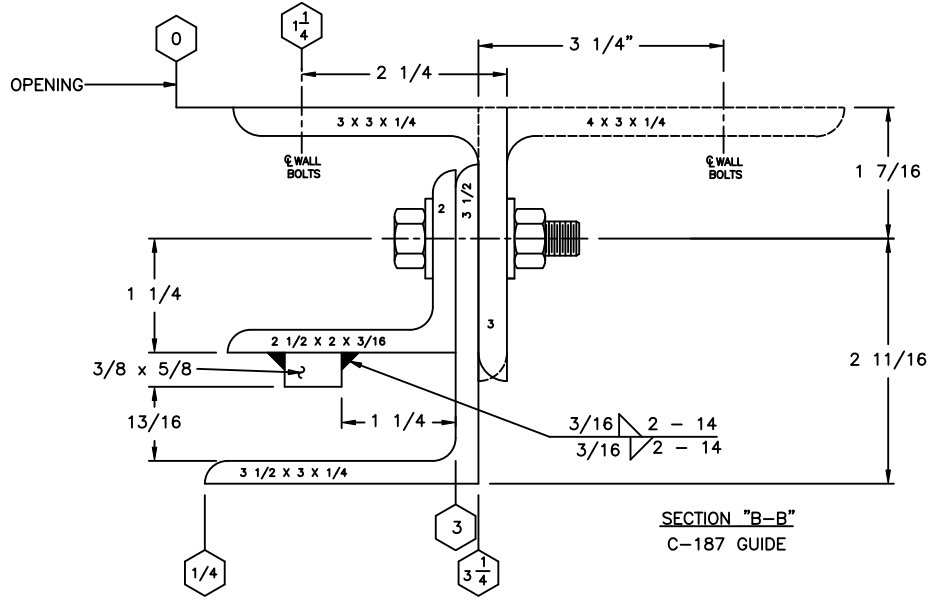
- NOTES
- (-W/L) = NEGATIVE WINDLOAD
(+W/L) = POSITIVE WINDLOAD
 - WALL ANGLES MAY BE WELDED TO STEEL JAMB.
SEE SHEET 2 FOR DOOR WELD DETAIL
 - RATED DESIGN LOAD ±65 PSF. LARGE MISSILE IMPACT TESTED
AT 50 FT/SECOND IMPACT SPEED.
 - CURTAIN MATERIAL: ASTM A-653, CS TYPE B.
GUIDE MATERIAL: ASTM A-36
 - ALTERNATE CURTAIN MATERIAL: AISI-304 SS.
MINIMUM YIELD 40,000 PSI.
 - CURTAIN MATERIAL SHALL BE GALVANIZED ACCORDING
TO ASTM A-525 TO G40 MINIMUM.
 - THE DOOR MUST BE INSTALLED WITH THE TENSION WHEEL
FACING THE INSIDE OF THE BUILDING.
 - SLIDE BOLTS MUST BE ENGAGED AND CHAIN MUST BE
HOOKED WHEN HURRICANE WINDS ARE ANNOUNCED.
 - WINDLOCK MATERIAL: LOW CARBON CAST STEEL, GRADE 70-46
(485-250) PER ASTM A27. MIN TENSILE 70-KSI MIN YIELD
36-KSI. MIN ELONG 22%.
 - WINDLOCKS ATTACHED TO EACH SLAT (CONTINUOUS).
 - RIVET SPECIFICATIONS:
1/4" DIAMETER RIVET, MINIMUM 1006 LOW-CARBON STEEL.
 - COMPLIES WITH IBC/IRC 2018.



REVISIONS				
REV	DESCRIPTION	DATE	APPROVAL	
502140 H	REV PER ER	5/3/13	MS	
502686 J	REV PER ER	3/6/14	MS	
32787 K	REV PER PCR	5/31/22	DG	

C-187 - DOOR SIZE REF. SUMMARY

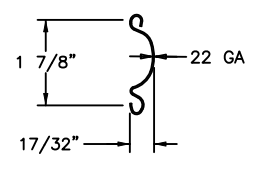
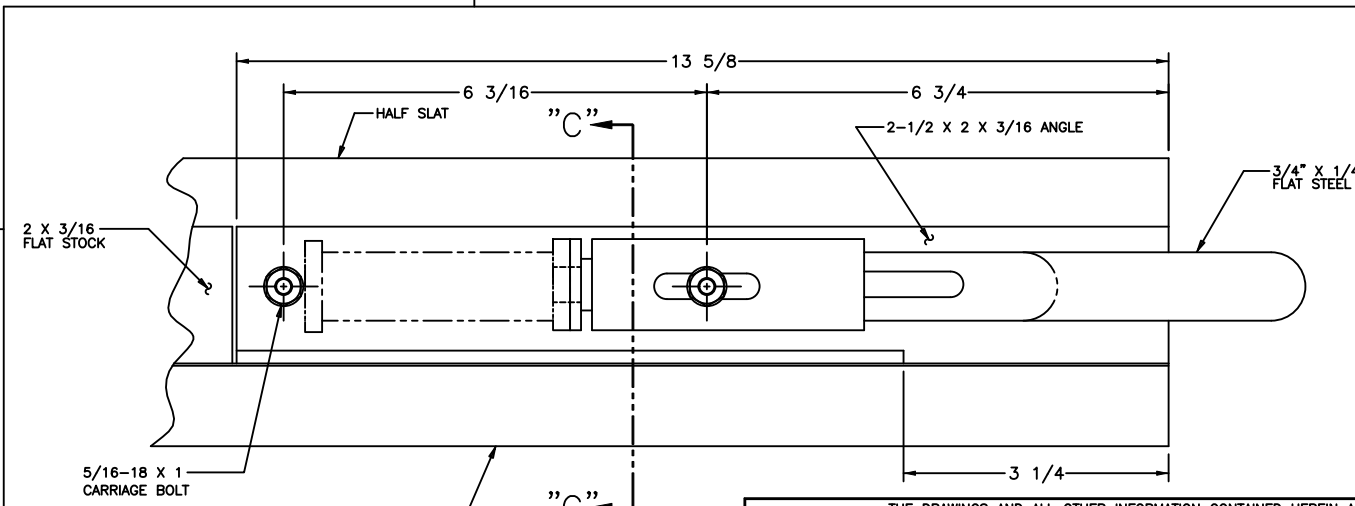
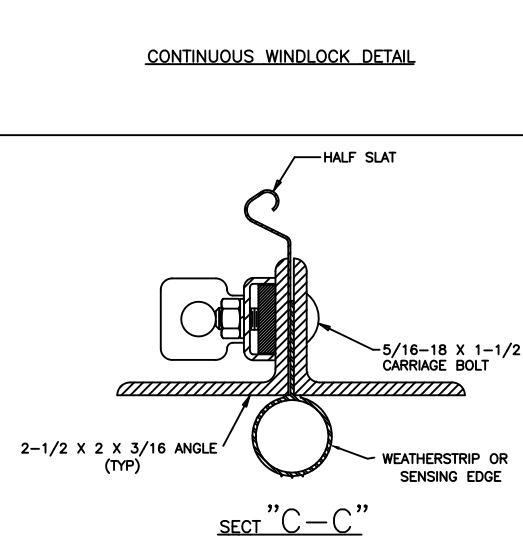
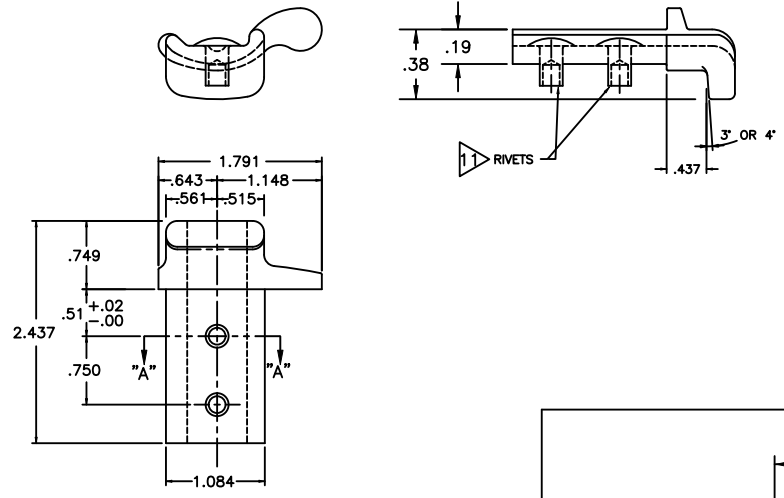
PER FT DOOR HEIGHT	(E-MOUNT) LOADS			(Z-MOUNT) LOADS *		
	22 GA **	20 GA	18 GA	22 GA **	20 GA	18 GA
REACTION (LBS)	3789	3551	3120	1112	1057	957
NORMAL (LBS)	325	325	325	325	325	325
PARALLEL (LBS)	954	896	791	954	896	791
MOMENT (INLBS)	3695	3516	3193	3613	3435	3112



	ASSEMBLY BOLT	WALL BOLT STEEL JAMB	WALL BOLT * CONCRETE JAMB
C-187	3/8" GRADE 5, 11" O.C.	3/8" GRADE 5, 11" O.C.	1/2", 4" EFF. EMBED HILTI KBT22 OR EQUIVALENT 11" O.C.

* 3000 PSI MINIMUM & 6" MINIMUM EDGE DISTANCE FOR ANCHORS
MINIMUM 6" CONCRETE THICKNESS

NOTE: FOR DETAILS ON WELDING GUIDES TO STEEL JAMBS SEE SHEET 2.



C-187 SLAT
GAUGE OPTIONS: 22**, 20, 18
**TESTED IN ACCORDANCE WITH DADE COUNTY
PROTOCOLS TAS 201-94, TAS 202-94, AND TAS 203-94

SERIES 611 IS EQUIVALENT CONSTRUCTION

JOHN E. SCATES, PE
2560 KING ARTHUR BLVD, STE 124-54
LEWISVILLE, TX 75056
FL PE 51737 / TX PE 56308/F-2203

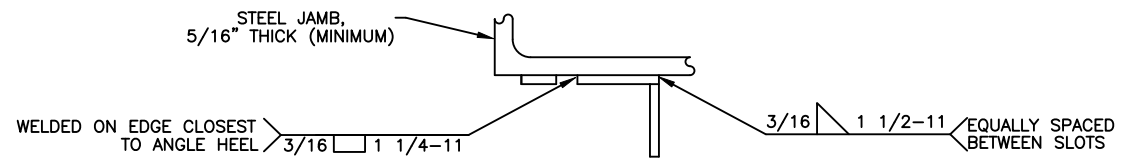
THE DRAWINGS AND ALL OTHER INFORMATION CONTAINED HEREIN ARE THE CONFIDENTIAL AND PROPRIETARY PROPERTY OF OVERHEAD DOOR CORPORATION AND ITS AFFILIATED COMPANIES. THIS DRAWING AND INFORMATION, IN WHOLE OR IN PART, MAY NOT BE COPIED IN ANY MANNER OR DISCLOSED TO ANYONE WITHOUT THE PRIOR WRITTEN CONSENT OF OVERHEAD DOOR CORPORATION. NO DISCLOSURE OF ANY OF THIS DRAWING OR INFORMATION IS INTENDED TO OPERATE AS A LICENSE OR AUTHORIZATION TO USE IT FOR ANY PURPOSE WITHOUT THE SPECIFIC WRITTEN CONSENT OF OVERHEAD DOOR CORPORATION.

REF DWG	USED ON	HOLE DIAMETER UNDER .251 +.004/-0.003 .251 TO .500 +.006/-0.003 OVER .500 +.008/-0.003	WHOLE NUMBERS: ±.25 .X ±.1 .XX ±.03 .XXX ±.010 ANGLES: ±.5°	FINISH 5	UNIT OF MEASURE N/A	DATE 8/8/03	NAME K WILSON	DRAWING TITLE SERIES 610, ROLLING SERVICE DOOR 10' DADE COUNTY
		FRACTIONS ± 1/16				DATE 9/5/03	CHECKED BY: L KRUPKE	DRAWING NUMBER D- 308123
						DATE 9/5/03	APPROVED BY: JD FAW	SCALE: NONE SHEET 1 OF 2

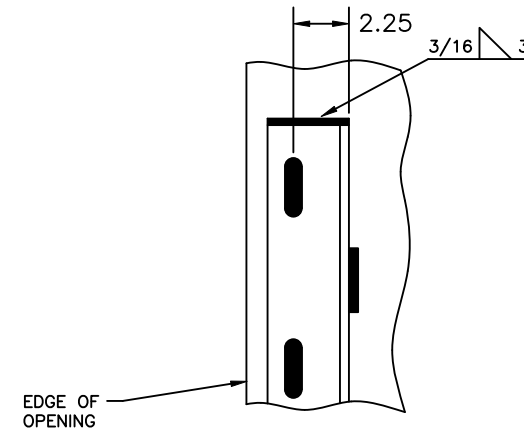
8 | 7 | 6 | 5 | 4 | 3 | 2 | 1

NOTES

- 1. REFER TO DRAWING 308666.0001 FOR TAG DETAILS
- 2. FASTENER FOR TAG IS P/N 080276-1004(STEEL DRIVE SCREW). TAG WILL BE MOUNTED IN THE MIDDLE OF THE BOTTOM BAR.

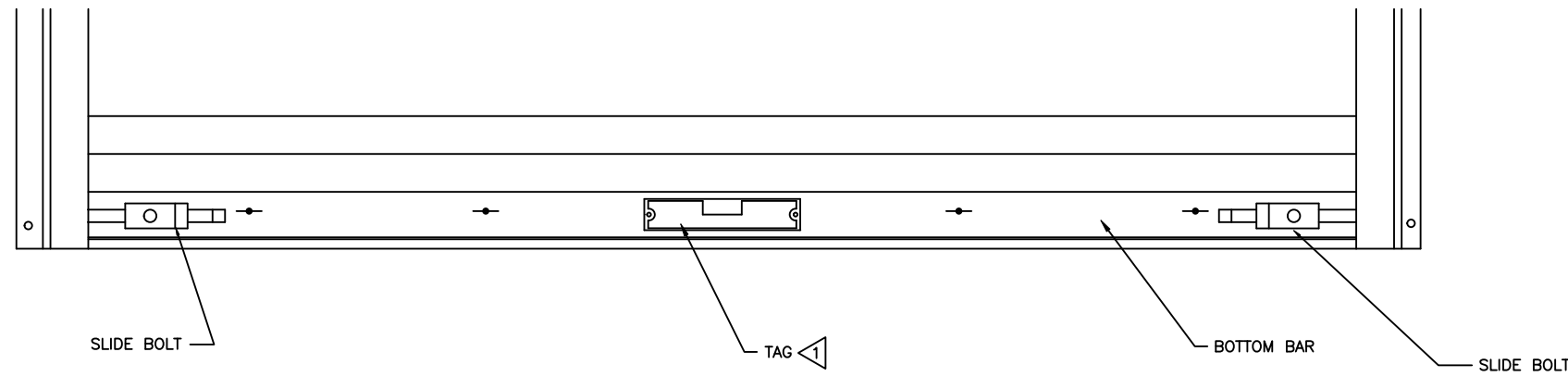


TOP VIEW



FRONT VIEW OF WALL ANGLE

DETAILS FOR WELDING "E" GUIDES TO STEEL JAMBS



DETAIL "E" SCALE: 4/1

JOHN E. SCATES, PE
2560 KING ARTHUR BLVD, STE 124-54
LEWISVILLE, TX 75056
FL PE 51737 / TX PE 56308/F-2203

THE DRAWINGS AND ALL OTHER INFORMATION CONTAINED HEREIN ARE THE CONFIDENTIAL AND PROPRIETARY PROPERTY OF OVERHEAD DOOR CORPORATION AND ITS AFFILIATED COMPANIES. THIS DRAWING AND INFORMATION, IN WHOLE OR IN PART, MAY NOT BE COPIED IN ANY MANNER OR DISCLOSED TO ANYONE WITHOUT THE PRIOR WRITTEN CONSENT OF OVERHEAD DOOR CORPORATION. NO DISCLOSURE OF ANY OF THIS DRAWING OR INFORMATION IS INTENDED TO OPERATE AS A LICENSE OR AUTHORIZATION TO USE IT FOR ANY PURPOSE WITHOUT THE SPECIFIC WRITTEN CONSENT OF OVERHEAD DOOR CORPORATION.									
REF DWG	USED ON	THIRD ANGLE PROJECTION	TOLERANCES UNLESS OTHERWISE SPECIFIED		FINISH	The Genuine. The Original. OVERHEAD DOOR LEWISVILLE, TEXAS	NAME	DATE	DRAWING TITLE
			HOLE DIAMETER	WHOLE NUMBERS:					
			UNDER .251 +.004/- .003	± .25					
			.251 TO .500 +.006/- .003	.X ± .1					
			OVER .500 +.008/- .003	.XX ± .03					
			FRACTIONS	.XXX ± .010	UNIT OF MEASURE				
			± 1/16	ANGLES: ± .5°	N/A				
						MATERIAL:			
						N/A			
							CHECKED BY:		
							JD FAW	10/10/03	DRAWING NUMBER
							APPROVED BY:		D- 308123
							L KRUPKE	10/10/03	SCALE: NONE
									SHEET 2 OF 2

8 | 7 | 6 | 5 | 4 | 3 | 2 | 1