

**NOTES:**

1. STANDARD GLAZING OPTION - .125" MINIMUM DSB GLAZING MEETS UNIFORM STATIC DESIGN PRESSURES SHOWN ON THIS DRAWING. GLAZING SHALL HAVE A MAXIMUM HEIGHT OF 6.70" AND A MAXIMUM LENGTH OF 24.00". GLAZING IS NOT IMPACT RESISTANT AND DOES NOT MEET THE REQUIREMENTS FOR WIND-BORNE DEBRIS REGIONS.

2. ALUMINUM FULL VIEW OPTION - ALUMINUM FULL VIEW SECTION MAY REPLACE ANY SECTION EXCEPT TOP AND BOTTOM PANELS. ALUMINUM FULL VIEW SECTION SHALL HAVE RAILS AND STILES OF EXTRUDED ALUMINUM ALLOY 6063-T6 WITH A 2-1/4" INTRAGRAL FIN AND .125" MINIMUM DSB GLAZING INSTALLED WITH ALUMINUM RETAINERS IN ORDER TO MEET UNIFORM STATIC DESIGN PRESSURES SHOWN ON THIS DRAWING. AFV PANEL SIZE IS 45.5"x21.9" (MAX). GLAZING IS NOT IMPACT RESISTANT AND DOES NOT MEET THE REQUIREMENTS FOR WIND-BORNE DEBRIS REGIONS.

3. MINIMUM OF 1" OVERLAP ON BOTH JAMBS REQUIRED TO MEET NEGATIVE DESIGN PRESSURES.

4. SLIDE LOCK OR OPERATOR REQUIRED.

5. SECTION STEEL TO HAVE THE FOLLOWING MINIMUM THICKNESS:

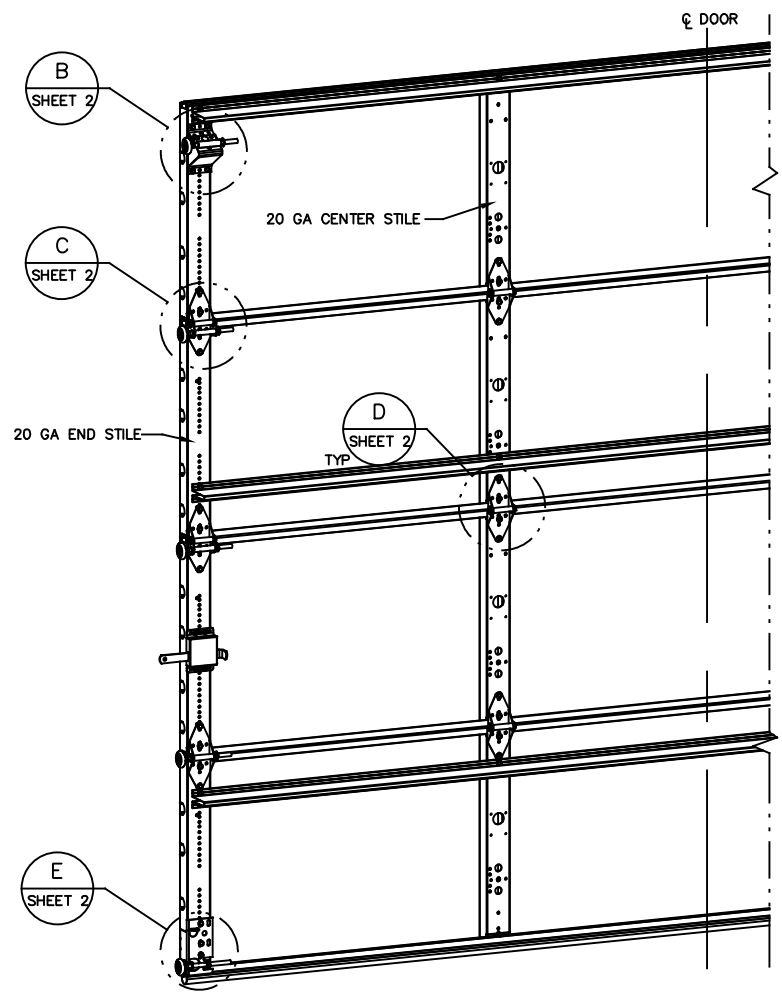
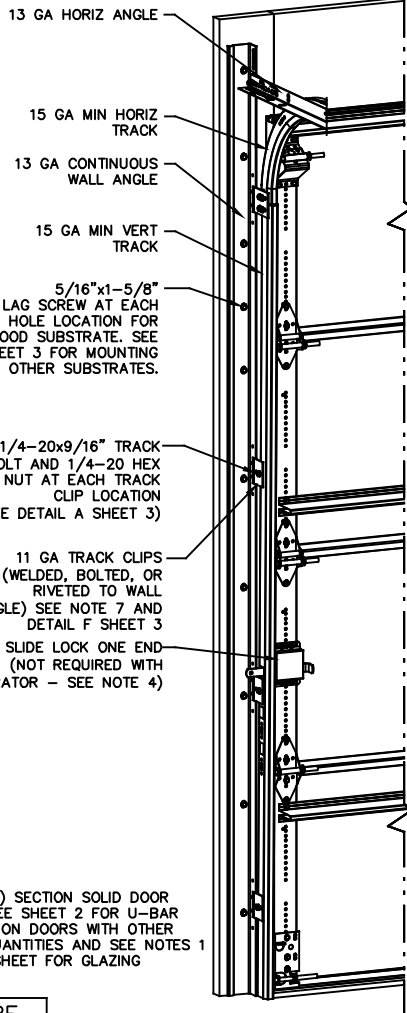
- C20 - 20 GA
- C24 - 24 GA
- C2400 - 25 GA

6. THE DESIGN OF THE SUPPORTING STRUCTURAL ELEMENTS SHALL BE THE RESPONSIBILITY OF THE PROFESSIONAL OF RECORD FOR THE BUILDING OR STRUCTURE AND IN ACCORDANCE WITH CURRENT BUILDING CODES FOR THE LOADS LISTED ON THIS DRAWING.

7. TRACK CLIPS SHALL BE LOCATED WITH CENTERLINE OF BOTTOM CLIP SPACED 10" MAX FROM BOTTOM OF TRACK AND REMAINING TRACK CLIPS SPACED AT 24" O.C. MAX. SPACING BETWEEN TOP TRACK CLIP AND SPLICE PLATE SHALL BE 30" O.C. MAX.

8. WHEN MOUNTING TO WOOD, DOOR JAMB TO BE MINIMUM 2x6 STRUCTURAL GRADE LUMBER. REFER TO JAMB CONNECTION SUPPLEMENT FOR ATTACHMENT TO SUPPORTING STRUCTURE.

NOTE: (4) SECTION SOLID DOOR SHOWN. SEE SHEET 2 FOR U-BAR LOCATIONS ON DOORS WITH OTHER SECTION QUANTITIES AND SEE NOTES 1 & 2 THIS SHEET FOR GLAZING OPTIONS.



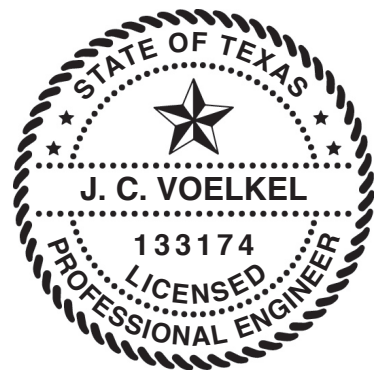
**REVISIONS**

REV - INITIAL DRAWING  
TLC 12/28/2020

REV A - ADDED SIZE OF AFV PANEL  
TLC 4/28/21

**SUPERIMPOSED DESIGN PRESSURE LOADS ON SUPPORTING STRUCTURE**

MAX DOOR WIDTH	DOOR HEIGHT	MAX UNIFORM LOAD EACH JAMB (PLF)
10'-4"	ALL	+107.6/-121.5



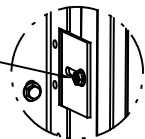
J. CHRISTIAN VOELKEL, PE  
312 N. NEW WARRINGTON ROAD, UNIT 1A  
PENSACOLA, FL  
FL PE 82229  
TX PE 133174

PROFESSIONAL ENGINEER'S SEAL PROVIDED ONLY FOR VERIFICATION OF WINDLOAD CONSTRUCTION DETAILS.

THE DOORS ARE DESIGNED AND MANUFACTURED TO COMPLY WITH THE 2018 IRC AND THE 2018 IBC.

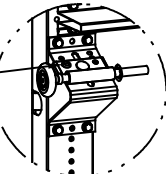
<p><b>Wayne Dalton</b> GARAGE DOORS</p> <p>A DIVISION OF OVERHEAD DOOR CORP 3395 ADDISON DRIVE PENSACOLA, FLORIDA 32514 (850) 474-9890</p>	<p>STATIC PRESSURE RATINGS</p> <p>DESIGN (PSF): +20.90/-23.60</p> <p>TEST (PSF): +31.35/-35.40</p> <p>IMPACT/CYCLIC RATED (YES/NO): NO</p>	<p>APPROVED SIZES</p> <p>MAX WIDTH: 10'-4"</p> <p>MAX HEIGHT: 24'-1"</p> <p>MAX SECTION HEIGHT: 24"</p>	<p>SCALE: N.T.S.</p> <p>DATE: 12/28/20</p> <p>CHECKED: 4/28/21</p>	<p>SIZE: A</p> <p>NAME: TLC</p> <p>TLC</p>
	<p>MODELS C20/C24/C2400</p>			<p>SHEET 1 OF 3</p>
	<p>WINDLOAD SPECIFICATION OPTION CODE 2073</p>			<p>DRAWING PART NO. 365600</p> <p>REV. A</p>

1/4-20x9/16" TRACK BOLT AND 1/4-20 HEX NUT THROUGH THE SLOT IN THE TRACK AND TRACK CLIP



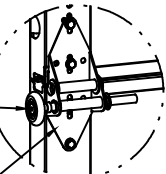
DETAIL A

12 GA COMMERCIAL 'A' FRAME BRACKET ASSEMBLY WITH 13 GA ROLLER CARRIER ATTACHED WITH (4) 1/4-14x7/8" SELF DRILLING CRIMPITITE SCREWS



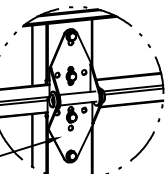
DETAIL B

2" STEEL ROLLER WITH 5-1/8" STEM AND 7/16" PUSHNUT AT EACH ROLLER LOCATION. 1/4" MAX BETWEEN PUSHNUT AND BRACKET OR HINGE

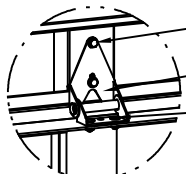


DETAIL C

13 GA WIDE BODY END HINGES EACH ATTACHED WITH (4) 1/4-14x7/8" SELF DRILLING CRIMPITITE SCREWS



SOLID SECTION



AFV SECTION

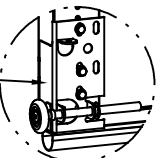
(2) 1/4-14x7/8" SELF DRILLING CRIMPITITE SCREWS

HALF HINGE

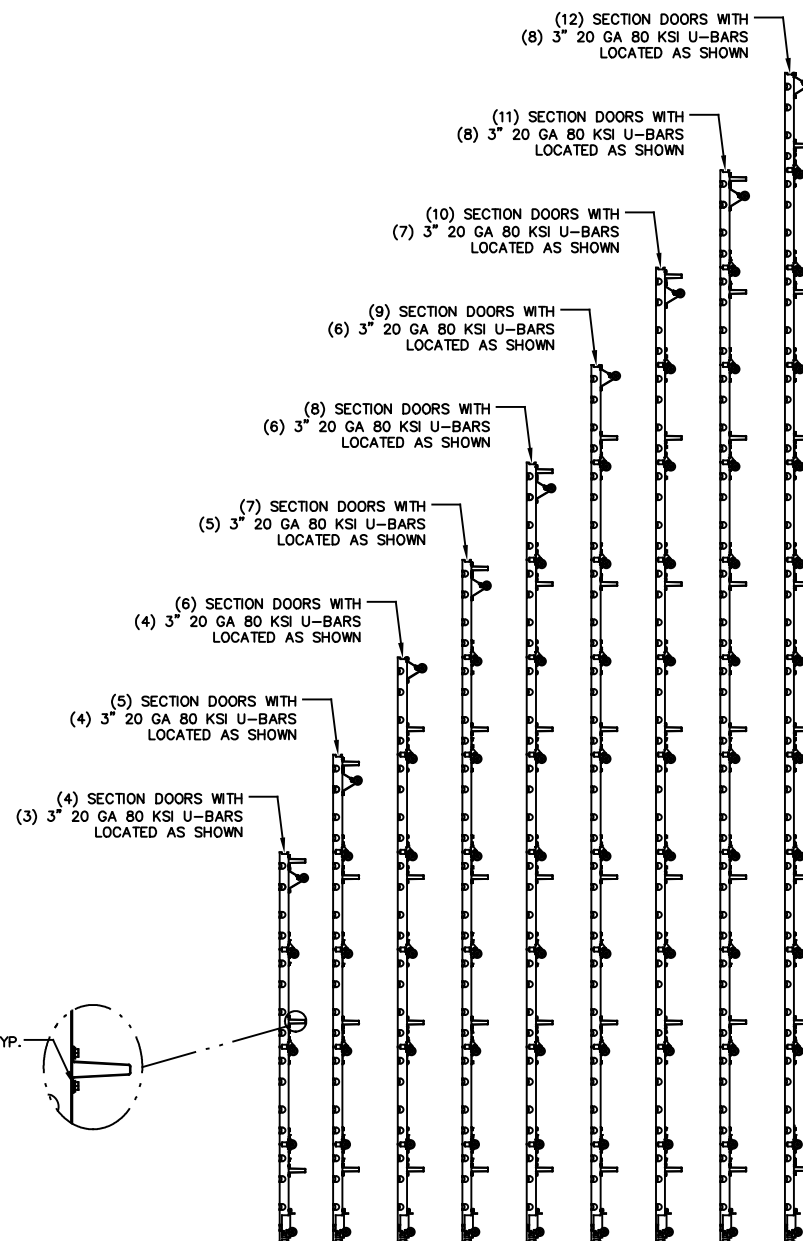
(2) 1/4 x 1/2" CARRIAGE BOLTS AND 1/4" FLANGE NUTS

DETAIL D

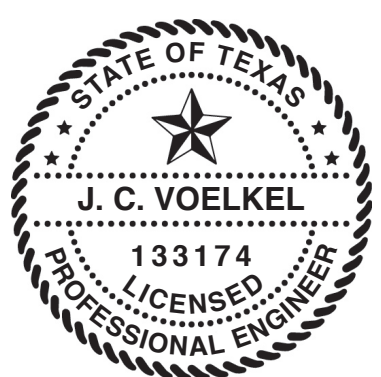
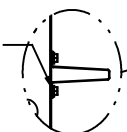
12 GA BOTTOM BRACKET ATTACHED WITH (3) 1/4-14x7/8" SELF DRILLING CRIMPITITE SCREWS



DETAIL E

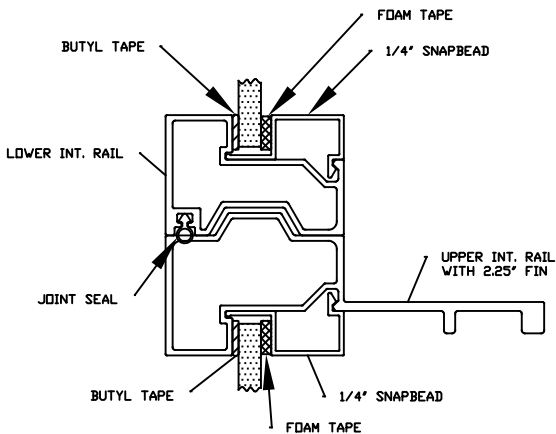


ATTACH U-BARS WITH (2) 1/4-14x7/8" SELF DRILLING CRIMPITITE SCREWS AT ALL STILE LOCATIONS, TYP.



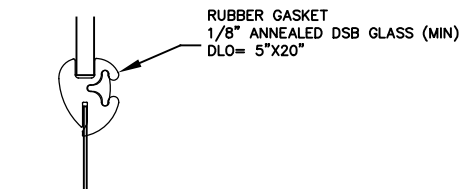
J. CHRISTIAN VOELKEL, PE  
 312 N. NEW WARRINGTON ROAD, UNIT 1A  
 PENSACOLA, FL  
 FL PE 82229  
 TX PE 133174  
 PROFESSIONAL ENGINEER'S SEAL PROVIDED ONLY FOR VERIFICATION OF WINDLOAD CONSTRUCTION DETAILS.

<b>Wayne Dalton</b> GARAGE DOORS A DIVISION OF OVERHEAD DOOR CORP. 3395 ADDISON DRIVE PENSACOLA, FLORIDA 32514 (850) 474-9890	STATIC PRESSURE RATINGS DESIGN (PSF): +20.90/-23.60 TEST (PSF): +31.35/-35.40 IMPACT/CYCLIC RATED (YES/NO): NO	APPROVED SIZES MAX WIDTH: 10'-4" MAX HEIGHT: 24'-1" MAX SECTION HEIGHT: 24"	SCALE: N.T.S. DATE: 12/28/20 DRAWN: 4/28/21 CHECKED:	SIZE: A NAME: TLC TLC SHEET 2 OF 3 DRAWING PART NO. 365600 REV. A
	MODELS C20/C24/C2400			WINDLOAD SPECIFICATION OPTION CODE 2073
	WINDLOAD SPECIFICATION OPTION CODE 2073			

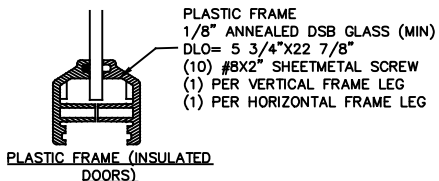


ALUMINUM FULL VIEW FRAME

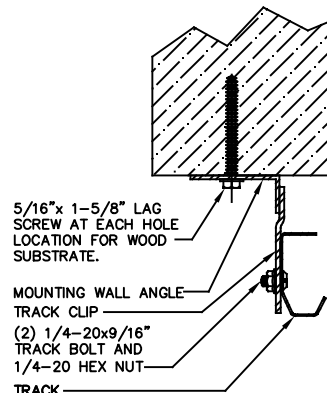
ALUMINUM FULL VIEW FRAME



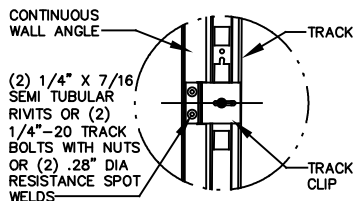
RUBBER FRAME GASKET  
(NON-INSULATED DOORS)



PLASTIC FRAME (INSULATED DOORS)

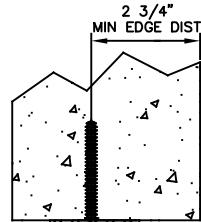


WOOD MOUNTING DETAIL - ANGLE OUT

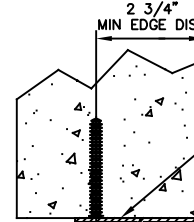


DETAIL F

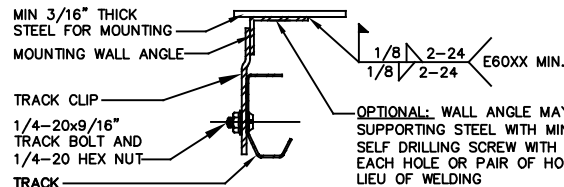
EXTERIOR FRAME



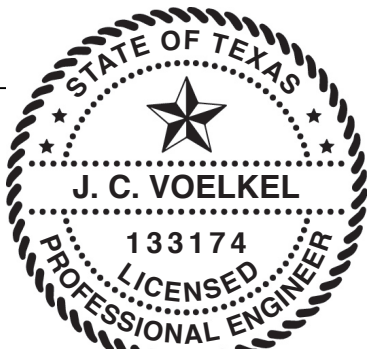
CONCRETE MOUNTING DETAIL - ANGLE OUT



CONCRETE MOUNTING DETAIL - ANGLE IN



MOUNTING TO STEEL DETAIL



J. CHRISTIAN VOELKEL, PE  
312 N. NEW WARRINGTON ROAD, UNIT 1A  
PENSACOLA, FL  
FL PE 82229  
TX PE 133174

PROFESSIONAL ENGINEER'S SEAL PROVIDED ONLY FOR VERIFICATION OF WINDLOAD CONSTRUCTION DETAILS.



A DIVISION OF OVERHEAD DOOR CORP.  
3395 ADDISON DRIVE  
PENSACOLA, FLORIDA 32514  
(850) 474-9890

STATIC PRESSURE RATINGS		APPROVED SIZES		SCALE: N.T.S.	SIZE: A
DESIGN (PSF):	+20.90/-23.60	MAX WIDTH:	10'-4"	DATE	NAME
TEST (PSF):	+31.35/-35.40	MAX HEIGHT:	24'-1"	DRAWN	12/28/20
IMPACT/CYCLIC RATED (YES/NO):	NO	MAX SECTION HEIGHT:	24"	CHECKED	4/28/21
MODELS C20/C24/C2400				SHEET 3 OF 3	
WINDLOAD SPECIFICATION OPTION CODE 2073				DRAWING PART NO.	REV.
				365600	A