

NOTES:

1. NON-IMPACT RESISTANT OPTION - .125" MINIMUM DSB GLAZING MEETS UNIFORM STATIC DESIGN PRESSURES SHOWN ON THIS DRAWING. GLAZING SHALL HAVE A MAXIMUM HEIGHT OF 6.70" AND A MAXIMUM LENGTH OF 24.00". GLAZING IS NOT IMPACT RESISTANT AND DOES NOT MEET THE REQUIREMENTS FOR WIND-BORNE DEBRIS REGIONS.

2. IMPACT RESISTANT GLAZING OPTION - IMPACT RESISTANT GLAZING SYSTEM MAY BE INSTALLED IN INTERMEDIATE SECTIONS (WITH OR WITHOUT DECORATIVE INSERTS). GLAZING SHALL BE 1/4" POLYCARBONATE. MAXIMUM GLAZING DIMENSIONS SHALL BE 11" x 17", FASTENED WITH A MINIMUM #8 X 1" SMS: 3X ALONG THE HORIZONTAL AND 2X ALONG THE VERTICAL.

3. ALUMINUM FULL VIEW OPTION - ALUMINUM FULL VIEW SECTION MAY REPLACE ANY SECTION EXCEPT TOP AND BOTTOM PANELS. ALUMINUM FULL VIEW SECTION SHALL HAVE RAILS AND STILES OF EXTRUDED ALUMINUM ALLOY 6063-T6 AND .125" MINIMUM DSB GLAZING INSTALLED WITH ALUMINUM RETAINERS IN ORDER TO MEET UNIFORM STATIC DESIGN PRESSURES SHOWN ON THIS DRAWING. AFV PANEL SIZE IS 51.5"x21.9" (MAX). GLAZING IS NOT IMPACT RESISTANT AND DOES NOT MEET THE REQUIREMENTS FOR WIND-BORNE DEBRIS REGIONS.

4. MINIMUM OF 1" OVERLAP ON BOTH JAMBS REQUIRED TO MEET NEGATIVE DESIGN PRESSURES.

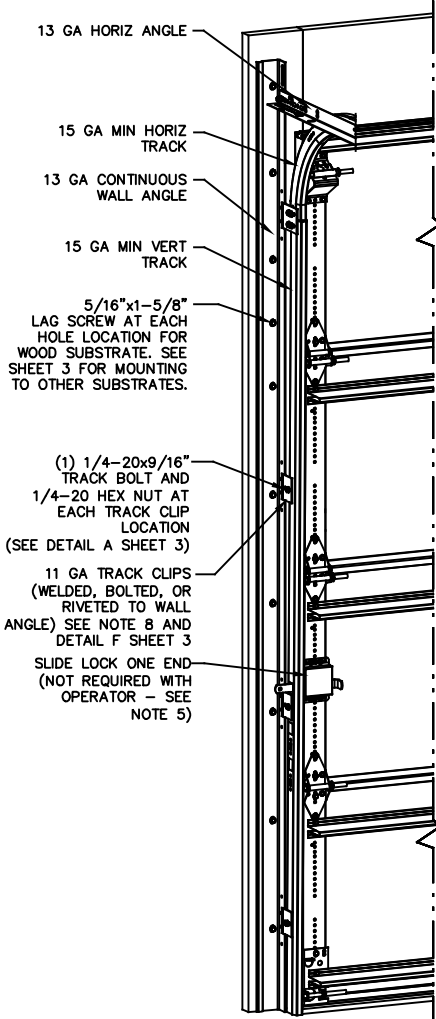
5. SLIDE LOCK OR OPERATOR REQUIRED.

6. SECTION STEEL TO HAVE THE FOLLOWING MINIMUM THICKNESS:
 C20 - 20 GA
 C24 - 24 GA
 C2400 - 25 GA

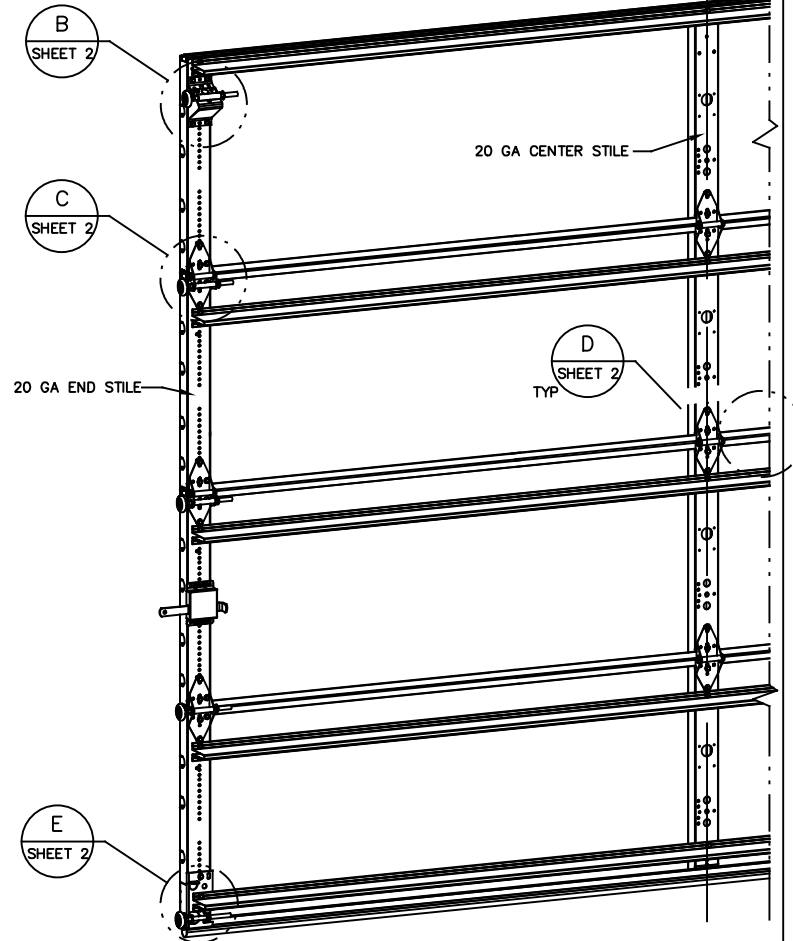
7. THE DESIGN OF THE SUPPORTING STRUCTURAL ELEMENTS SHALL BE THE RESPONSIBILITY OF THE PROFESSIONAL OF RECORD FOR THE BUILDING OR STRUCTURE AND IN ACCORDANCE WITH CURRENT BUILDING CODES FOR THE LOADS LISTED ON THIS DRAWING.

8. TRACK CLIPS SHALL BE LOCATED WITH CENTERLINE OF BOTTOM CLIP SPACED 10" MAX FROM BOTTOM OF TRACK AND REMAINING TRACK CLIPS SPACED AT 24" O.C. MAX. SPACING BETWEEN TOP TRACK CLIP AND SPLICE PLATE SHALL BE 30" O.C. MAX.

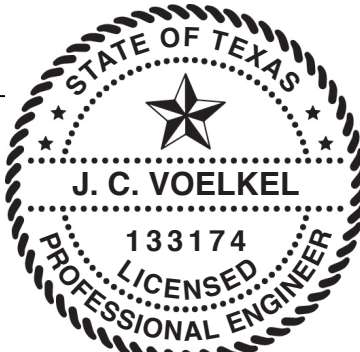
9. WHEN MOUNTING TO WOOD, DOOR JAMB TO BE MINIMUM 2x6 STRUCTURAL GRADE LUMBER. REFER TO JAMB CONNECTION SUPPLEMENT FOR ATTACHMENT TO SUPPORTING STRUCTURE.



NOTE: (4) SECTION SOLID DOOR SHOWN. SEE SHEET 2 FOR U-BAR LOCATIONS ON DOORS WITH OTHER SECTION QUANTITIES AND SEE NOTES 1, 2, & 3 THIS SHEET FOR GLAZING OPTIONS.



REVISIONS
 REV - INITIAL DRAWING WLO05 08/12/20 TLC
 REV A - ADDED SIZE OF AFV PANEL TLC 4/28/21



SUPERIMPOSED DESIGN PRESSURE LOADS ON SUPPORTING STRUCTURE

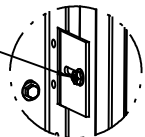
MAX DOOR WIDTH	DOOR HEIGHT	MAX UNIFORM LOAD EACH JAMB (PLF)
9'-4"	ALL	+132.1/-151.3

THE DOORS ARE DESIGNED AND MANUFACTURED TO COMPLY WITH THE 2018 IRC AND THE 2018 IBC.

<p>Wayne Dalton GARAGE DOORS</p> <p>A DIVISION OF OVERHEAD DOOR CORP 3395 ADDISON DRIVE PENSACOLA, FLORIDA 32514 (850) 474-9890</p>	STATIC PRESSURE RATINGS		APPROVED SIZES	SCALE: N.T.S.	SIZE: A		
	DESIGN (PSF):	+28.40/-32.20	MAX WIDTH:	9'-4"	DATE	NAME	
	TEST (PSF):	+42.60/-48.30	MAX HEIGHT:	24'-1"	DRAWN	8/17/20	TLC
	IMPACT/CYCLIC RATED (YES/NO):	YES	MAX SECTION HEIGHT:	24"	CHECKED	4/28/21	TLC
MODELS C20/C24/C2400				SHEET 1 OF 3			
WINDLOAD SPECIFICATION OPTION CODE 2064				DRAWING PART NO.	REV.		
				365567	A		

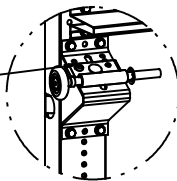
PROFESSIONAL ENGINEER'S SEAL PROVIDED ONLY FOR VERIFICATION OF WINDLOAD CONSTRUCTION DETAILS.

1/4-20x9/16" TRACK BOLT AND 1/4-20 HEX NUT THROUGH THE SLOT IN THE TRACK AND TRACK CLIP



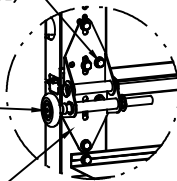
DETAIL A

12 GA COMMERCIAL 'A' FRAME BRACKET ASSEMBLY WITH 13 GA ROLLER CARRIER ATTACHED WITH (4) 1/4-14x7/8" SELF DRILLING CRIMPTITE SCREWS



DETAIL B

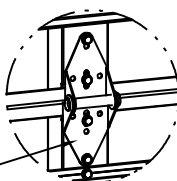
ADD (2) 1/4-14x7/8" SELF DRILLING CRIMPTITE SCREWS (INSIDE OF EACH INSIDE END HINGE)



DETAIL C

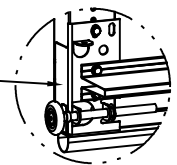
2" STEEL ROLLER WITH 5-1/8" STEM AND 7/16" PUSHNUT AT EACH ROLLER LOCATION. 1/4" MAX BETWEEN PUSHNUT AND BRACKET OR HINGE

14 GA WIDE BODY END HINGE TO ATTACH SECTIONS ONE AND TWO. 13 GA WIDE BODY END HINGE TO ATTACH REMAINING SECTIONS. FOR ALL, ATTACH WITH (4) 1/4-14x7/8" SELF DRILLING CRIMPTITE SCREWS



DETAIL D

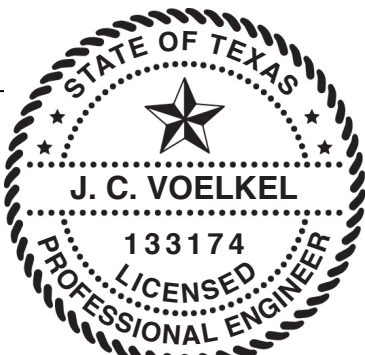
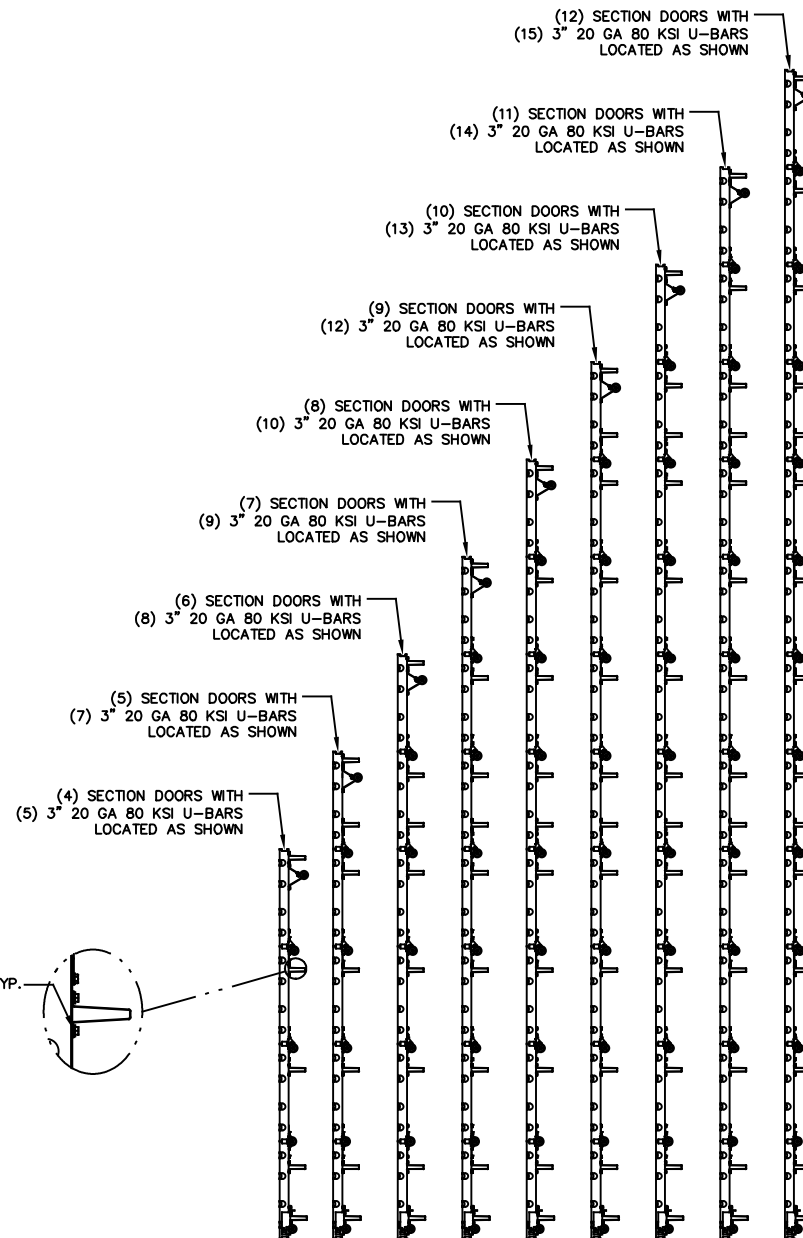
14 GA WIDE BODY INTERMEDIATE HINGE ATTACHED WITH (4) 1/4-14x7/8" SELF DRILLING CRIMPTITE SCREWS



DETAIL E

12 GA BOTTOM BRACKET ATTACHED WITH (3) 1/4-14x7/8" SELF DRILLING CRIMPTITE SCREWS

ATTACH U-BARS WITH (2) 1/4-14x7/8" SELF DRILLING CRIMPTITE SCREWS AT ALL STILE LOCATIONS, TYP.



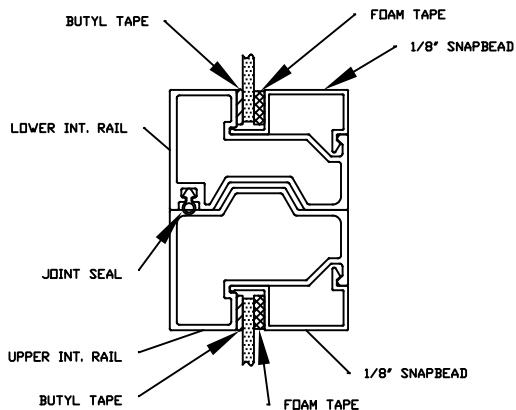
J. CHRISTIAN VOELKEL, PE
312 N. NEW WARRINGTON ROAD, UNIT 1A
PENSACOLA, FL
FL PE 82229
TX PE 133174

PROFESSIONAL ENGINEER'S SEAL PROVIDED ONLY FOR VERIFICATION OF WINDLOAD CONSTRUCTION DETAILS.

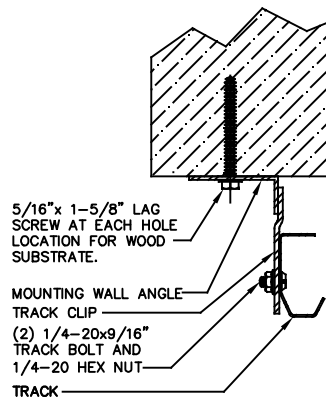
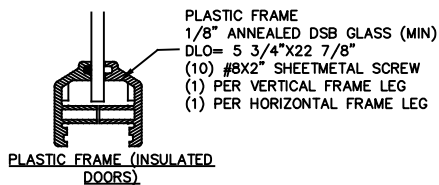
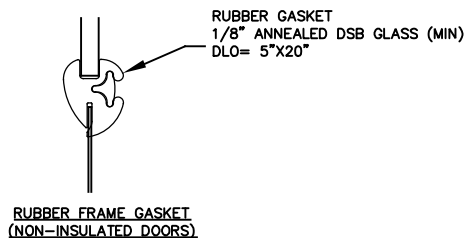


A DIVISION OF OVERHEAD DOOR CORP.
3395 ADDISON DRIVE
PENSACOLA, FLORIDA 32514
(850) 474-9890

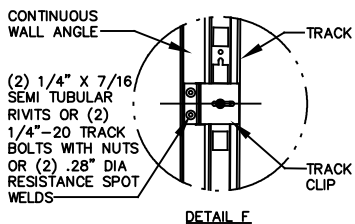
STATIC PRESSURE RATINGS		APPROVED SIZES		SCALE: N.T.S.	SIZE: A
DESIGN (PSF):	+28.40/-32.20	MAX WIDTH:	9'-4"	DATE	NAME
TEST (PSF):	+42.60/-48.30	MAX HEIGHT:	24'-1"	DRAWN	08/17/20
IMPACT/CYCLIC RATED (YES/NO):	YES	MAX SECTION HEIGHT:	24"	CHECKED	4/28/21
MODELS C20/C24/C2400				SHEET 2 OF 3	
WINDLOAD SPECIFICATION OPTION CODE 2064				DRAWING PART NO.	REV.
				365567	A



ALUMINUM FULL VIEW
1/8" GLAZING OPTION

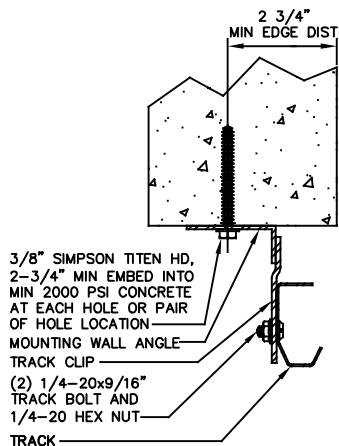


WOOD MOUNTING DETAIL - ANGLE OUT

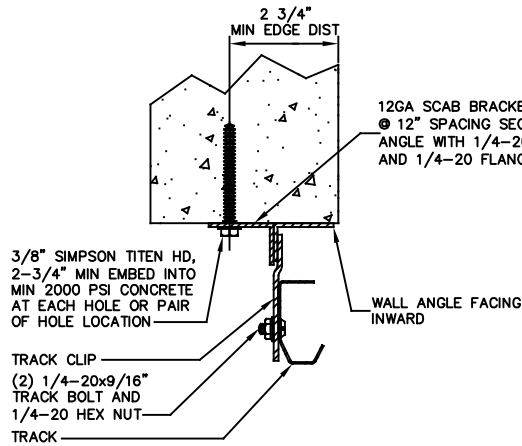


DETAIL F

EXTERIOR FRAME



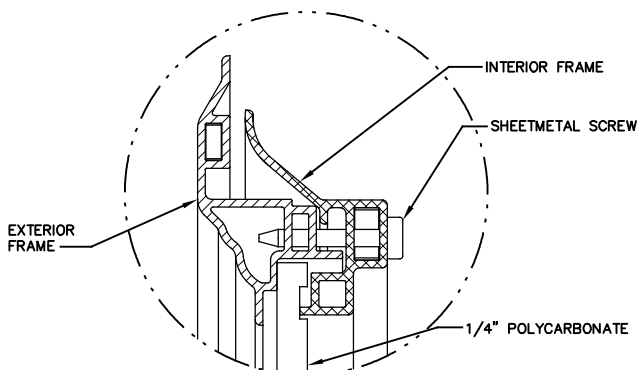
CONCRETE MOUNTING DETAIL - ANGLE OUT



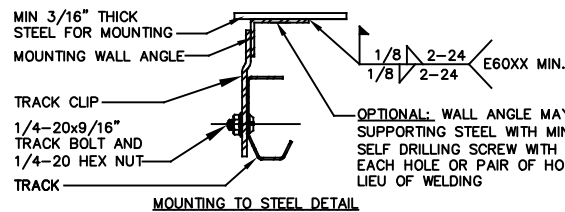
CONCRETE MOUNTING DETAIL - ANGLE IN

12GA SCAB BRACKETS (OPTIONAL)
@ 12" SPACING SECURED TO WALL
ANGLE WITH 1/4"-20 TRACK BOLT
AND 1/4"-20 FLANGE NUT

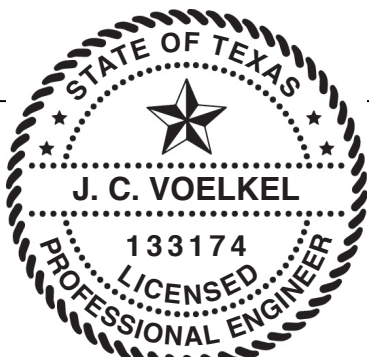
WALL ANGLE FACING
INWARD



IMPACT WINDOW / ALUMINUM FRAME WITH GROOVED POLYCARBONATE



MOUNTING TO STEEL DETAIL



J. CHRISTIAN VOELKEL, PE
312 N. NEW WARRINGTON ROAD, UNIT 1A
PENSACOLA, FL
FL PE 82229
TX PE 133174

PROFESSIONAL ENGINEER'S SEAL PROVIDED ONLY FOR
VERIFICATION OF WINDLOAD CONSTRUCTION DETAILS.

Wayne Dalton
GARAGE DOORS

A DIVISION OF OVERHEAD DOOR CORP.
3395 ADDISON DRIVE
PENSACOLA, FLORIDA 32514
(850) 474-9890

STATIC PRESSURE RATINGS		APPROVED SIZES		SCALE: N.T.S.	SIZE: A
DESIGN (PSF):	+28.40/-32.20	MAX WIDTH:	9'-4"	DATE	NAME
TEST (PSF):	+42.60/-48.30	MAX HEIGHT:	24'-1"	DRAWN	08/17/20
IMPACT/CYCLIC RATED (YES/NO):	YES	MAX SECTION HEIGHT:	24"	CHECKED	4/28/21
MODELS C20/C24/C2400				SHEET 3 OF 3	
WINDLOAD SPECIFICATION OPTION CODE 2064				DRAWING PART NO.	REV.
				365567	A