

**NOTES:**

1. STANDARD GLAZING OPTION - .125" MINIMUM DSB GLAZING MEETS UNIFORM STATIC DESIGN PRESSURES SHOWN ON THIS DRAWING. GLAZING SHALL HAVE A MAXIMUM HEIGHT OF 6.70" AND A MAXIMUM LENGTH OF 24.00". GLAZING IS NOT IMPACT RESISTANT AND DOES NOT MEET THE REQUIREMENTS FOR WIND-BORNE DEBRIS REGIONS.

2. ALUMINUM FULL VIEW OPTION - ALUMINUM FULL VIEW SECTION MAY REPLACE ANY SECTION EXCEPT TOP AND BOTTOM PANELS. ALUMINUM FULL VIEW SECTION SHALL HAVE RAILS AND STILES OF EXTRUDED ALUMINUM ALLOY 6063-T6 WITH A 2-1/4" INTEGRAL FIN AND .125" MINIMUM DSB GLAZING INSTALLED WITH ALUMINUM RETAINERS IN ORDER TO MEET UNIFORM STATIC DESIGN PRESSURES SHOWN ON THIS DRAWING. AFV PANEL SIZE IS 51.5"x21.9" (MAX). GLAZING IS NOT IMPACT RESISTANT AND DOES NOT MEET THE REQUIREMENTS FOR WIND-BORNE DEBRIS REGIONS.

3. MINIMUM OF 1" OVERLAP ON BOTH JAMBS REQUIRED TO MEET NEGATIVE DESIGN PRESSURES.

4. SLIDE LOCK OR OPERATOR REQUIRED.

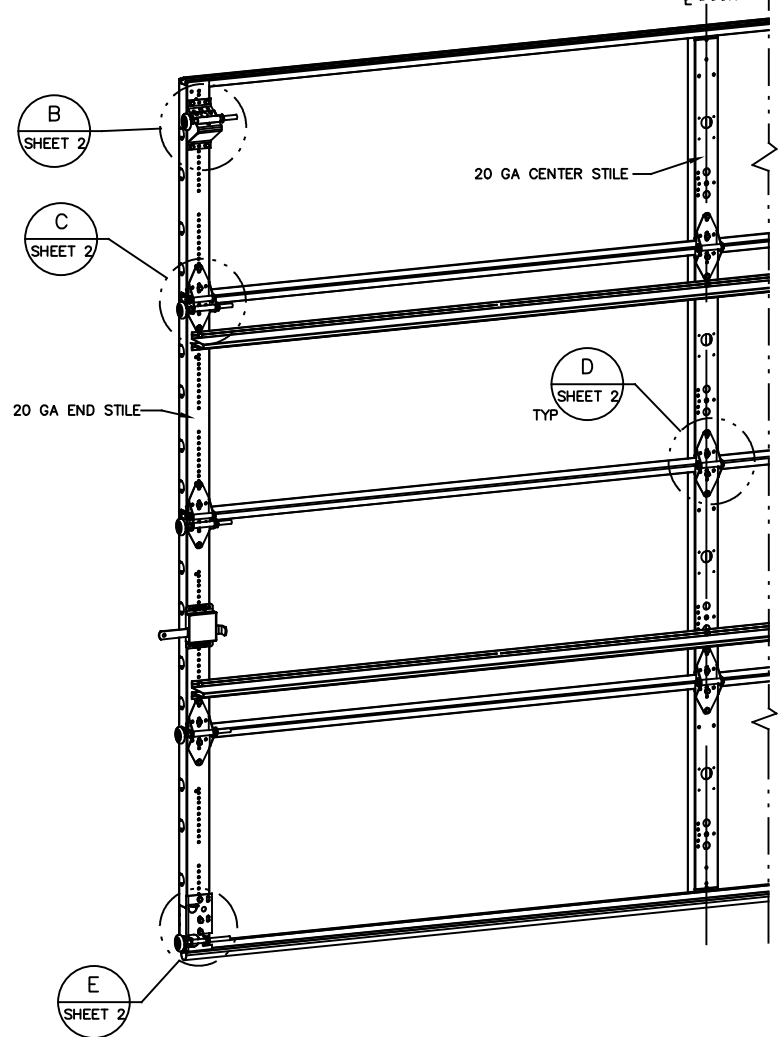
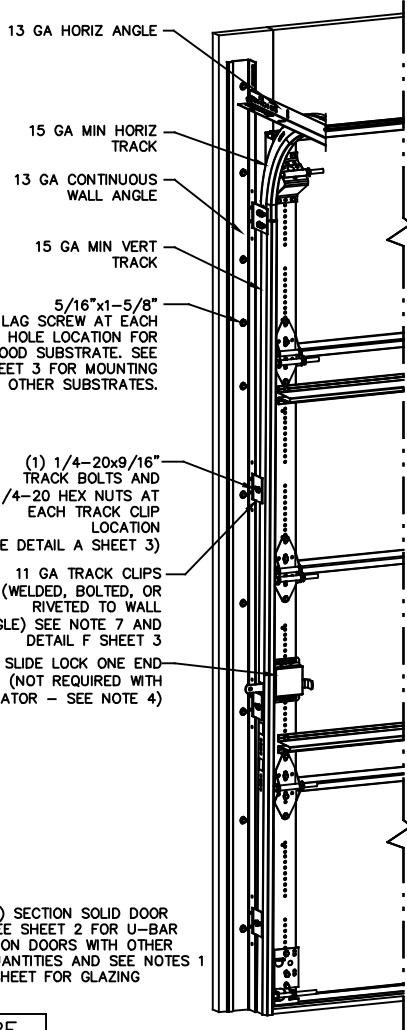
5. SECTION STEEL TO HAVE THE FOLLOWING MINIMUM THICKNESS:  
 C20 - 20 GA  
 C24 - 24 GA  
 C2400 - 25 GA

6. THE DESIGN OF THE SUPPORTING STRUCTURAL ELEMENTS SHALL BE THE RESPONSIBILITY OF THE PROFESSIONAL OF RECORD FOR THE BUILDING OR STRUCTURE AND IN ACCORDANCE WITH CURRENT BUILDING CODES FOR THE LOADS LISTED ON THIS DRAWING.

7. TRACK CLIPS SHALL BE LOCATED WITH CENTERLINE OF BOTTOM CLIP SPACED 10" MAX FROM BOTTOM OF TRACK AND REMAINING TRACK CLIPS SPACED AT 24" O.C. MAX. SPACING BETWEEN TOP TRACK CLIP AND SPLICE PLATE SHALL BE 30" O.C. MAX.

8. WHEN MOUNTING TO WOOD, DOOR JAMB TO BE MINIMUM 2x6 STRUCTURAL GRADE LUMBER. REFER TO JAMB CONNECTION SUPPLEMENT FOR ATTACHMENT TO SUPPORTING STRUCTURE.

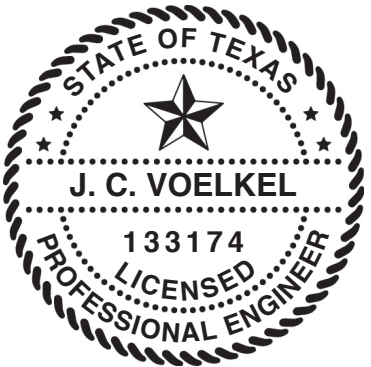
NOTE: (4) SECTION SOLID DOOR SHOWN. SEE SHEET 2 FOR U-BAR LOCATIONS ON DOORS WITH OTHER SECTION QUANTITIES AND SEE NOTES 1 & 2 THIS SHEET FOR GLAZING OPTIONS.



**REVISIONS**

REV - INITIAL DRAWING	WLO05
08/12/20	TLC
REV A - ADDED SIZE OF AFV PANEL	TLC 4/28/21

SUPERIMPOSED DESIGN PRESSURE LOADS ON SUPPORTING STRUCTURE		
MAX DOOR WIDTH	DOOR HEIGHT	MAX UNIFORM LOAD EACH JAMB (PLF)
9'-4"	ALL	+79.1/-90.2

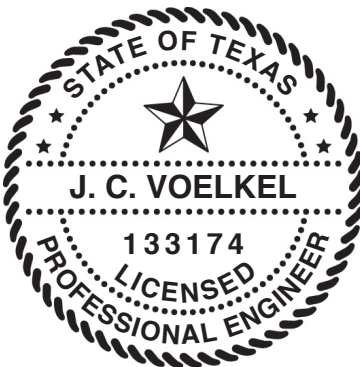
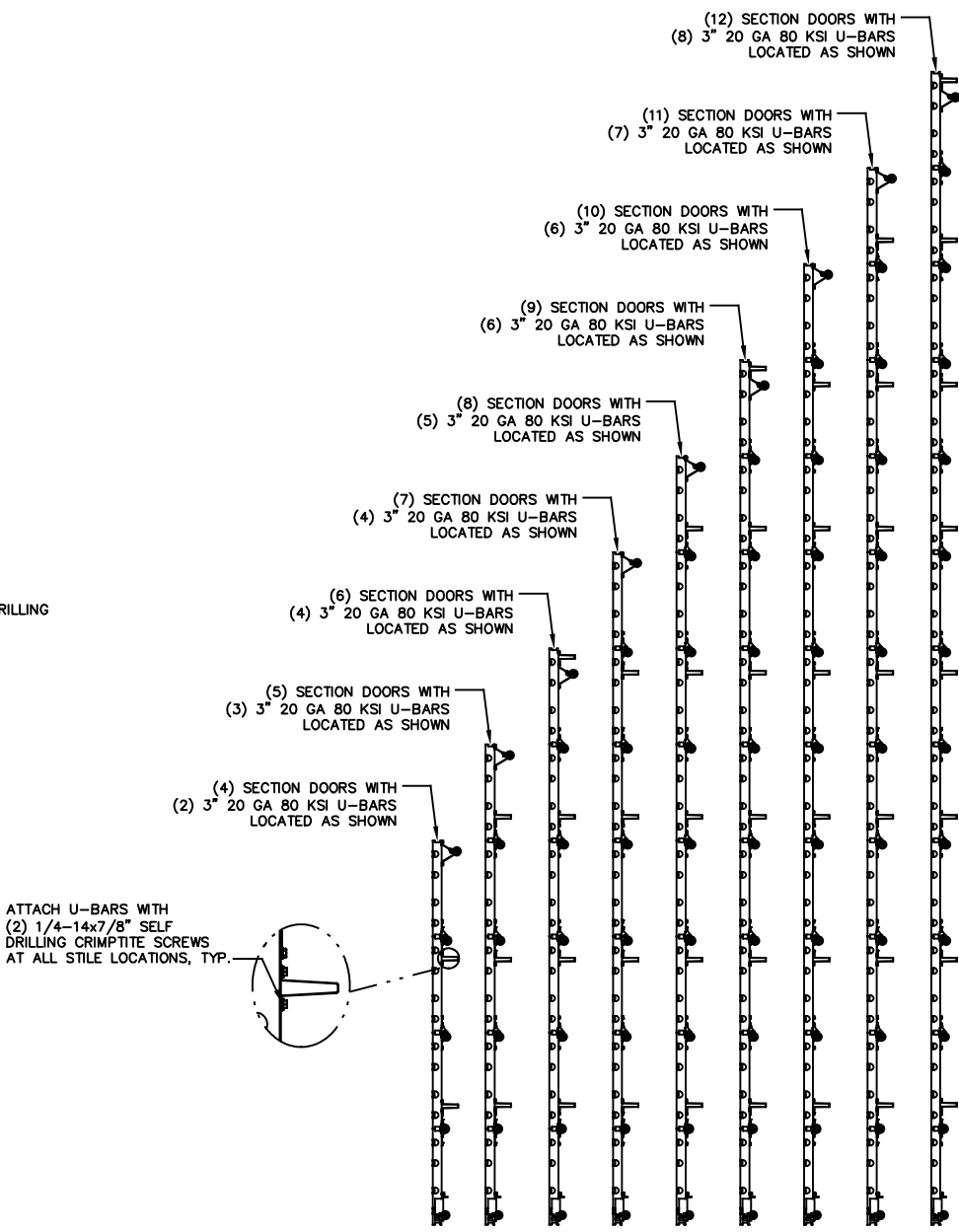
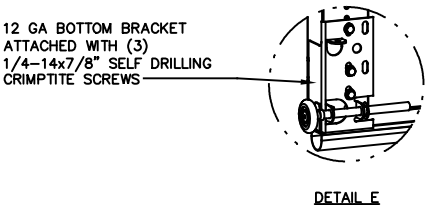
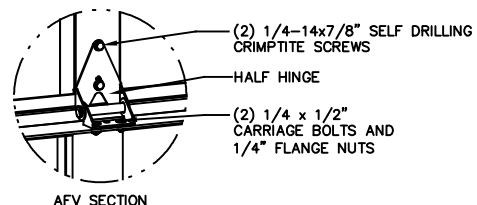
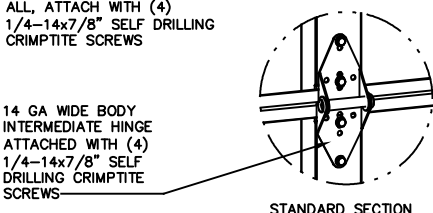
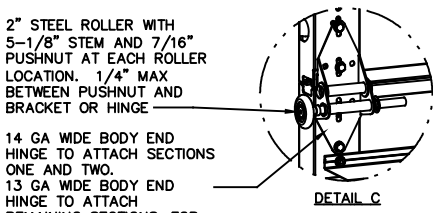
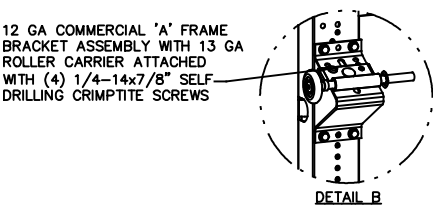
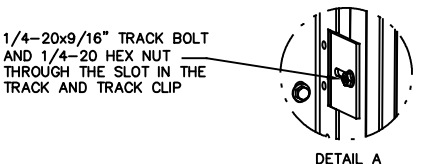


THE DOORS ARE DESIGNED AND MANUFACTURED TO COMPLY WITH THE 2018 IRC AND THE 2018 IBC.

<p><b>Wayne Dalton</b> GARAGE DOORS™</p> <p>A DIVISION OF OVERHEAD DOOR CORP.          3395 ADDISON DRIVE          PENSACOLA, FLORIDA 32514          (850) 474-9890</p>	STATIC PRESSURE RATINGS DESIGN (PSF): +17.00/-19.40 TEST (PSF): +25.50/-29.10 IMPACT/CYCLIC RATED (YES/NO): NO	APPROVED SIZES MAX WIDTH: 9'-4" MAX HEIGHT: 24'-1" MAX SECTION HEIGHT: 24"	SCALE: N.T.S. DATE: 8/12/2020 CHECKED: 4/28/21	SIZE: A NAME: TLC TLC
	MODELS C20/C24/C2400			SHEET 1 OF 3
	WINDLOAD SPECIFICATION OPTION CODE 2062			DRAWING PART NO. 365565
				REV. A

J. CHRISTIAN VOELKEL, PE  
 312 N. NEW WARRINGTON ROAD, UNIT 1A  
 PENSACOLA, FL  
 FL PE 82229  
 TX PE 133174

PROFESSIONAL ENGINEER'S SEAL PROVIDED ONLY FOR VERIFICATION OF WINDLOAD CONSTRUCTION DETAILS.



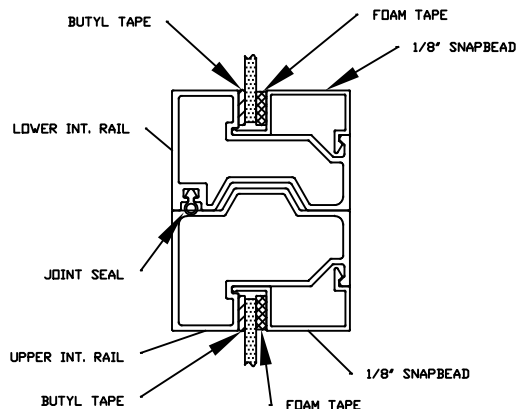
J. CHRISTIAN VOELKEL, PE  
312 N. NEW WARRINGTON ROAD, UNIT 1A  
PENSACOLA, FL  
FL PE 82229  
TX PE 133174

PROFESSIONAL ENGINEER'S SEAL PROVIDED ONLY FOR VERIFICATION OF WINDLOAD CONSTRUCTION DETAILS.

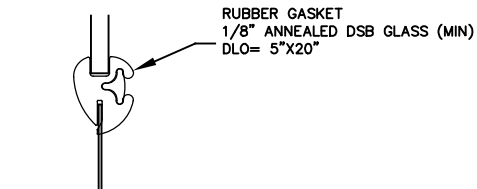
**Wayne Dalton**  
GARAGE DOORS™

A DIVISION OF OVERHEAD DOOR CORP.  
3395 ADDISON DRIVE  
PENSACOLA, FLORIDA 32514  
(850) 474-9890

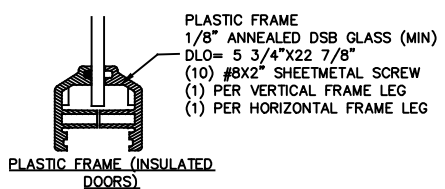
STATIC PRESSURE RATINGS		APPROVED SIZES		SCALE: N.T.S.	SIZE: A
DESIGN (PSF):	+17.00/-19.40	MAX WIDTH:	9'-4"	DATE	NAME
TEST (PSF):	+25.50/-29.10	MAX HEIGHT:	24'-1"	DRAWN	TLC
IMPACT/CYCLIC RATED (YES/NO):	NO	MAX SECTION HEIGHT:	24"	CHECKED	TLC
MODELS C20/C24/C2400				SHEET 2 OF 3	
WINDLOAD SPECIFICATION OPTION CODE 2062				DRAWING PART NO.	REV.
				365565	A



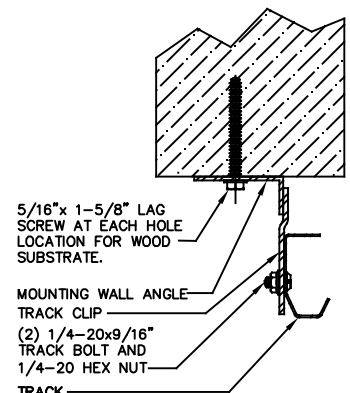
ALUMINUM FULL VIEW  
1/8" GLAZING OPTION



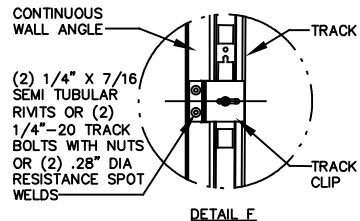
RUBBER FRAME GASKET  
(NON-INSULATED DOORS)



PLASTIC FRAME (INSULATED DOORS)

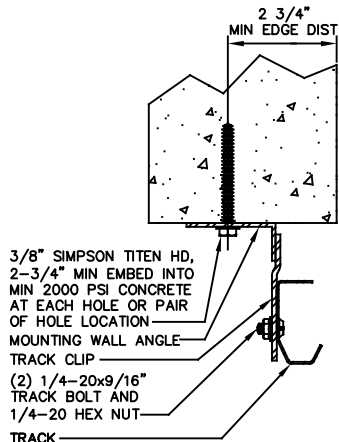


WOOD MOUNTING DETAIL - ANGLE OUT

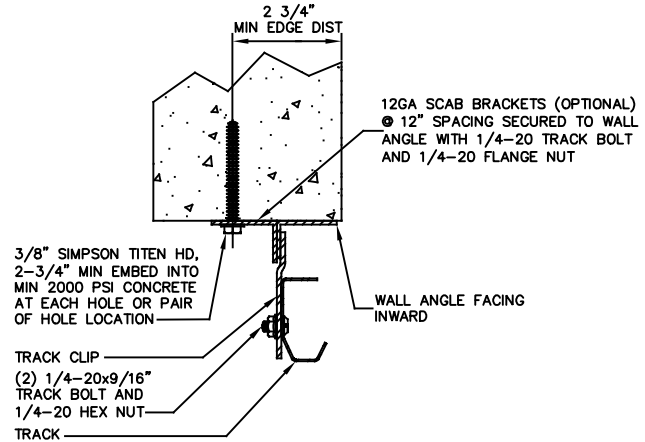


DETAIL F

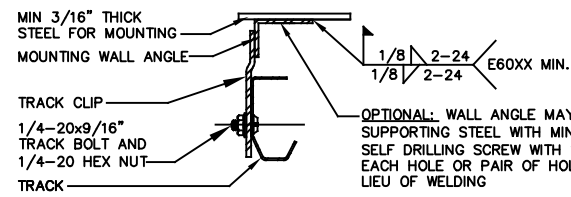
EXTERIOR FRAME



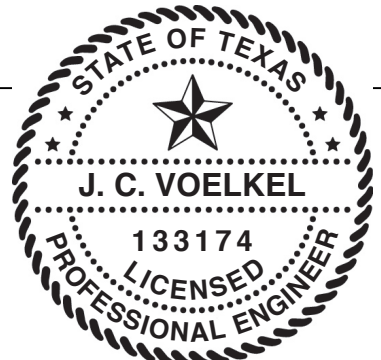
CONCRETE MOUNTING DETAIL - ANGLE OUT



CONCRETE MOUNTING DETAIL - ANGLE IN



MOUNTING TO STEEL DETAIL



J. CHRISTIAN VOELKEL, PE  
312 N. NEW WARRINGTON ROAD, UNIT 1A  
PENSACOLA, FL  
FL PE 82229  
TX PE 133174  
PROFESSIONAL ENGINEER'S SEAL PROVIDED ONLY FOR VERIFICATION OF WINDLOAD CONSTRUCTION DETAILS.

**Wayne Dalton**  
GARAGE DOORS™  
A DIVISION OF OVERHEAD DOOR CORP.  
3395 ADDISON DRIVE  
PENSACOLA, FLORIDA 32514  
(850) 474-9890

STATIC PRESSURE RATINGS		APPROVED SIZES	SCALE: N.T.S.	SIZE: A
DESIGN (PSF):	+17.00/-19.40	MAX WIDTH: 9'-4"	DATE	NAME
TEST (PSF):	+25.50/-29.10	MAX HEIGHT: 24'-1"	DRAWN	TLC
IMPACT/CYCLIC RATED (YES/NO):	NO	MAX SECTION HEIGHT: 24"	CHECKED	TLC
MODELS C20/C24/C2400			SHEET 3 OF 3	
WINDLOAD SPECIFICATION OPTION CODE 2062			DRAWING PART NO.	REV.
			365565	A