

NOTES:

1. NON-IMPACT RESISTANT GLAZING OPTION - .125" MINIMUM DSB GLAZING MEETS UNIFORM STATIC DESIGN PRESSURES SHOWN ON THIS DRAWING. GLAZING SHALL HAVE A MAXIMUM HEIGHT OF 6.70" AND A MAXIMUM LENGTH OF 24.00". GLAZING IS NOT IMPACT RESISTANT AND DOES NOT MEET THE REQUIREMENTS FOR WIND-BORNE DEBRIS REGIONS.

2. IMPACT RESISTANT GLAZING OPTION - IMPACT RESISTANT GLAZING SYSTEM MAY BE INSTALLED IN INTERMEDIATE SECTIONS (WITH OR WITHOUT DECORATIVE INSERTS). GLAZING SHALL BE 1/4" POLYCARBONATE. MAXIMUM GLAZING DIMENSIONS SHALL BE 11" x 17", FASTENED WITH A MINIMUM #8 X 1" SMS; 3X ALONG THE HORIZONTAL AND 2X ALONG THE VERTICAL.

3. MINIMUM OF 1" OVERLAP ON BOTH JAMBS REQUIRED TO MEET NEGATIVE DESIGN PRESSURES.

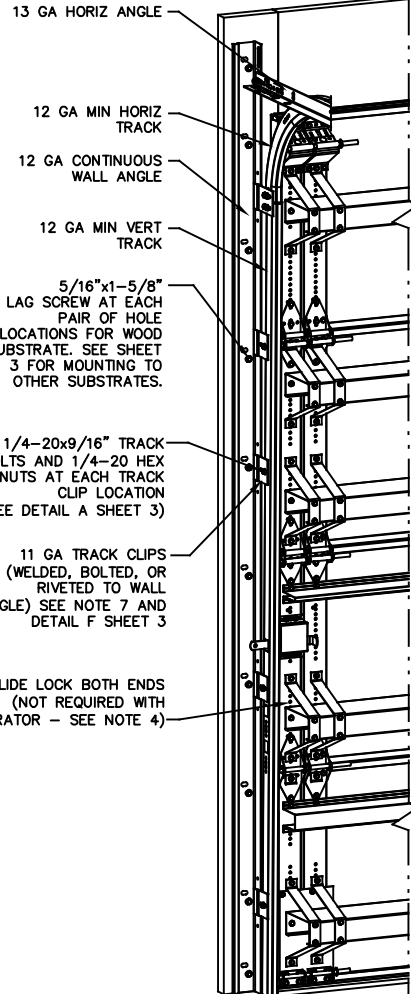
4. SLIDE LOCKS OR OPERATOR REQUIRED.

5. SECTION STEEL TO HAVE THE FOLLOWING MINIMUM THICKNESS:
 C20 - 20 GA
 C24 - 24 GA
 C2400 - 25 GA

6. THE DESIGN OF THE SUPPORTING STRUCTURAL ELEMENTS SHALL BE THE RESPONSIBILITY OF THE PROFESSIONAL OF RECORD FOR THE BUILDING OR STRUCTURE AND IN ACCORDANCE WITH CURRENT BUILDING CODES FOR THE LOADS LISTED ON THIS DRAWING.

7. TRACK CLIPS SHALL BE LOCATED WITH CENTERLINE OF BOTTOM CLIP SPACED 10" MAX FROM BOTTOM OF TRACK AND REMAINING TRACK CLIPS SPACED AT 24" O.C. MAX. SPACING BETWEEN TOP TRACK CLIP AND SPLICE PLATE SHALL BE 30" O.C. MAX.

8. WHEN MOUNTING TO WOOD, DOOR JAMB TO BE MINIMUM 2x6 STRUCTURAL GRADE LUMBER. REFER TO JAMB CONNECTION SUPPLEMENT FOR ATTACHMENT TO SUPPORTING STRUCTURE.

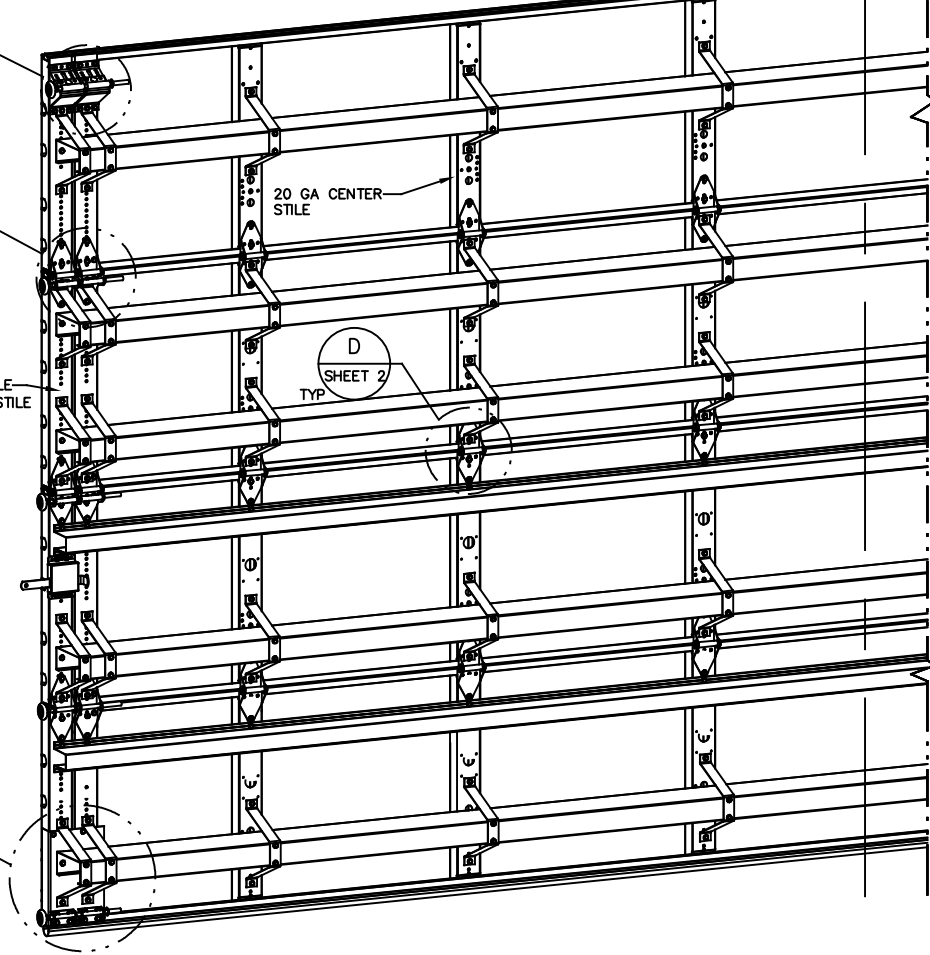


NOTE: (4) SECTION SOLID DOOR SHOWN. SEE SHEET 2 FOR C-CHANNEL LOCATIONS ON DOORS WITH OTHER SECTION QUANTITIES AND SEE NOTE 1 & 2 THIS SHEET FOR GLAZING OPTION.

B
SHEET 2

C
SHEET 2

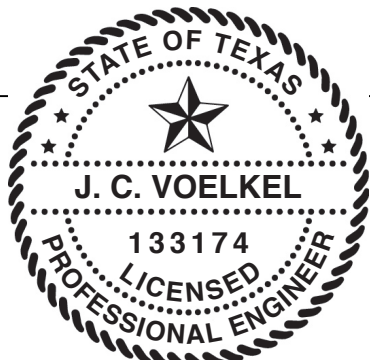
E
SHEET 2



Ø DOOR

REVISIONS

- P1 MODIFIED MOUNTING TO STEEL DETAIL. ADDED DETAIL F ON SHEET 2 FOR TRACK CLIPS. GRT 4/20/08
- P2 DECREASED WALL ANGLE THICKNESS. UPDATED TITLE BLOCK GRT 3/22/12
- P3 UPDATED TITLE BLOCK ESC 10/13/17
- REV D - DRAWING UPDATES. TLC 10/16/20
- REV E - DRAWING UPDATES. TLC 5/25/21



J. CHRISTIAN VOELKEL, PE
 312 N. NEW WARRINGTON ROAD, UNIT 1A
 PENSACOLA, FL
 FL PE 82229
 TX PE 133174

PROFESSIONAL ENGINEER'S SEAL PROVIDED ONLY FOR VERIFICATION OF WINDLOAD CONSTRUCTION DETAILS.

SUPERIMPOSED DESIGN PRESSURE LOADS ON SUPPORTING STRUCTURE

MAX DOOR WIDTH	DOOR HEIGHT	MAX UNIFORM LOAD EACH JAMB (PLF)
24'-2"	ALL	+381.8/-427.8

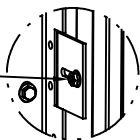
THE DOORS ARE DESIGNED AND MANUFACTURED TO COMPLY WITH THE 2018 IRC AND THE 2018 IBC.



A DIVISION OF OVERHEAD DOOR CORP.
 3395 ADDISON DRIVE
 PENSACOLA, FLORIDA 32514
 (850) 474-9890

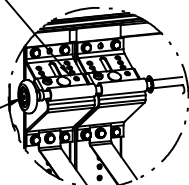
STATIC PRESSURE RATINGS		APPROVED SIZES	SCALE: N.T.S.	SIZE: A
DESIGN (PSF):	+31.60/-35.40	MAX WIDTH: 24'-2"	DATE	NAME
TEST (PSF):	+47.40/-53.10	MAX HEIGHT: 24'-1"	DRAWN	TLC
IMPACT/CYCLIC RATED (YES/NO):	YES	MAX SECTION HEIGHT: 24"	CHECKED	TLC
MODELS C20/C24/C2400			SHEET 1 OF 3	
WINDLOAD SPECIFICATION OPTION CODE 2052			DRAWING PART NO.	REV.
			365577	E

1/4-20x9/16" TRACK BOLT AND 1/4-20 HEX NUT THROUGH THE SLOT IN THE TRACK AND TRACK CLIP



DETAIL A

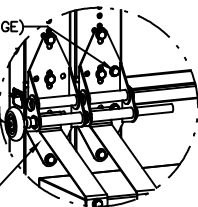
(2) 12 GA COMMERCIAL 'A' FRAME BRACKET ASSEMBLIES WITH 13 GA ROLLER CARRIER EACH ATTACHED WITH (4) 1/4-14x7/8" SELF DRILLING CRIMP TITE SCREWS



DETAIL B

3" STEEL ROLLER WITH 7/16" DIA. x 9" LONG STEM AND 7/16" PUSH NUT AT TOP ROLLER LOCATION. 1/4" MAX BETWEEN PUSH NUT AND BRACKET.

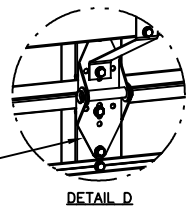
ADD (2) 1/4-14x7/8" SELF DRILLING CRIMP TITE SCREWS (INSIDE OF EACH INSIDE END HINGE)



DETAIL C

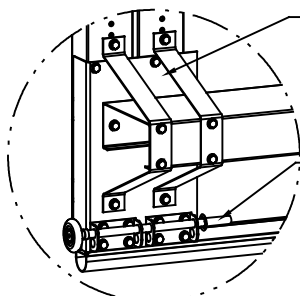
3" STEEL ROLLER WITH 9/16" DIA. x 9" LONG STEM AT ALL ROLLER LOCATIONS EXCEPT TOP AND BOTTOM ROLLERS

11 GA MODIFIED WIDE BODY END HINGE ATTACHED WITH (4) 1/4-14x7/8" SELF DRILLING CRIMP TITE SCREWS



DETAIL D

14 GA WIDE BODY INTERMEDIATE HINGE ATTACHED WITH (4) 1/4-14x7/8" SELF DRILLING CRIMP TITE SCREWS



DETAIL E

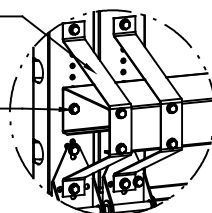
11 GA DOUBLE BOTTOM BRACKET ATTACHED WITH (14) 1/4-14x7/8" SELF DRILLING CRIMP TITE SCREWS (4 OF WHICH ARE USED IN ATTACHMENT OF CHANNEL AND STRAPS AND 8 OF WHICH ARE USED TO ATTACH 12 GA ROLLER CARRIERS)

3" STEEL ROLLER WITH 7/16" DIA. x 9" LONG STEM AND 7/16" PUSH NUT. 1/4" MAX BETWEEN PUSH NUT AND BRACKET.

ATTACH U-BARS WITH (2) 1/4-14x7/8" SELF DRILLING CRIMP TITE SCREWS AT ALL STILE LOCATIONS, TYP.

ATTACH EACH 6" STRAP WITH (4) 1/4-14x7/8" SELF DRILLING CRIMP TITE SCREWS AT EACH STILE LOCATION AS SHOWN

ATTACH EACH 6" C-CHANNEL WITH (1) 1/4-14x7/8" SELF DRILLING CRIMP TITE SCREW AT EACH STILE LOCATION AS SHOWN



(12) SECTION DOORS WITH (15) 6" 16 GA 50 KSI C-CHANNELS AND (6) 4" 16 GA 80 KSI U-BARS LOCATED AS SHOWN

(11) SECTION DOORS WITH (13) 6" 16 GA 50 KSI C-CHANNELS AND (7) 4" 16 GA 80 KSI U-BARS LOCATED AS SHOWN

(10) SECTION DOORS WITH (12) 6" 16 GA 50 KSI C-CHANNELS AND (6) 4" 16 GA 80 KSI U-BARS LOCATED AS SHOWN

(9) SECTION DOORS WITH (11) 6" 16 GA 50 KSI C-CHANNELS AND (5) 4" 16 GA 80 KSI U-BARS LOCATED AS SHOWN

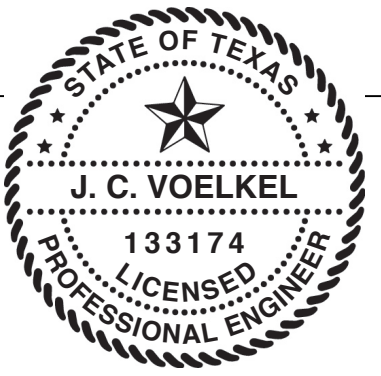
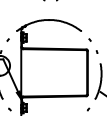
(8) SECTION DOORS WITH (10) 6" 16 GA 50 KSI C-CHANNELS AND (4) 4" 16 GA 80 KSI U-BARS LOCATED AS SHOWN

(7) SECTION DOORS WITH (8) 6" 16 GA 50 KSI C-CHANNELS AND (5) 4" 16 GA 80 KSI U-BARS LOCATED AS SHOWN

(6) SECTION DOORS WITH (7) 6" 16 GA 50 KSI C-CHANNELS AND (4) 4" 16 GA 80 KSI U-BARS LOCATED AS SHOWN

(5) SECTION DOORS WITH (6) 6" 16 GA 50 KSI C-CHANNELS AND (3) 4" 16 GA 80 KSI U-BARS LOCATED AS SHOWN

(4) SECTION DOORS WITH (5) 6" 16 GA 50 KSI C-CHANNELS AND (2) 4" 16 GA 80 KSI U-BARS LOCATED AS SHOWN



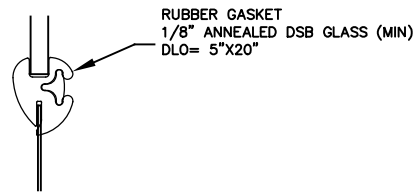
J. CHRISTIAN VOELKEL, PE
312 N. NEW WARRINGTON ROAD, UNIT 1A
PENSACOLA, FL
FL PE 82229
TX PE 133174

PROFESSIONAL ENGINEER'S SEAL PROVIDED ONLY FOR VERIFICATION OF WINDLOAD CONSTRUCTION DETAILS.

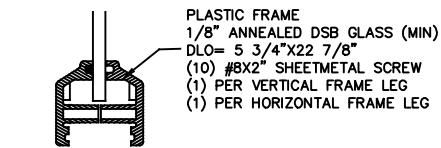


A DIVISION OF OVERHEAD DOOR CORP.
3395 ADDISON DRIVE
PENSACOLA, FLORIDA 32514
(850) 474-9890

STATIC PRESSURE RATINGS		APPROVED SIZES		SCALE: N.T.S.	SIZE: A
DESIGN (PSF):	+31.60/-35.40	MAX WIDTH:	24'-2"	DATE	NAME
TEST (PSF):	+47.40/-53.10	MAX HEIGHT:	24'-1"	DRAWN	7/30/20
IMPACT/CYCLIC RATED (YES/NO):	YES	MAX SECTION HEIGHT:	24'	CHECKED	5/25/21
MODELS C20/C24/C2400				SHEET 2 OF 3	
WINDLOAD SPECIFICATION OPTION CODE 2052				DRAWING PART NO.	REV.
				332577	E



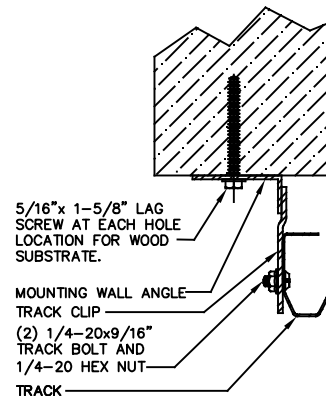
RUBBER GASKET
1/8" ANNEALED DSB GLASS (MIN)
DLO= 5"X20"



RUBBER FRAME GASKET
(NON-INSULATED DOORS)

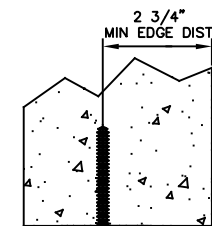
PLASTIC FRAME
1/8" ANNEALED DSB GLASS (MIN)
DLO= 5 3/4"X22 7/8"
(10) #8X2" SHEETMETAL SCREW
(1) PER VERTICAL FRAME LEG
(1) PER HORIZONTAL FRAME LEG

PLASTIC FRAME (INSULATED DOORS)



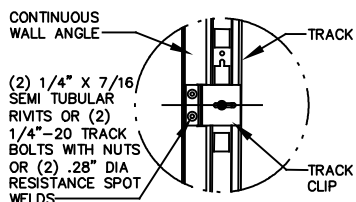
5/16"x 1-5/8" LAG SCREW AT EACH HOLE LOCATION FOR WOOD SUBSTRATE.
MOUNTING WALL ANGLE
TRACK CLIP
(2) 1/4-20x9/16" TRACK BOLT AND 1/4-20 HEX NUT
TRACK

WOOD MOUNTING DETAIL - ANGLE OUT



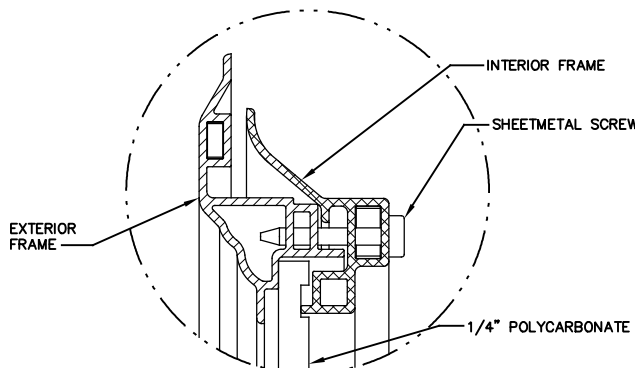
2 3/4" MIN EDGE DIST
3/8" SIMPSON TITEN HD, 2-3/4" MIN EMBED INTO MIN 2000 PSI CONCRETE AT EACH HOLE OR PAIR OF HOLE LOCATION
MOUNTING WALL ANGLE
TRACK CLIP
(2) 1/4-20x9/16" TRACK BOLT AND 1/4-20 HEX NUT
TRACK

CONCRETE MOUNTING DETAIL - ANGLE OUT

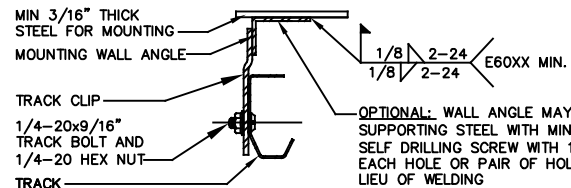


CONTINUOUS WALL ANGLE
TRACK
(2) 1/4" X 7/16" SEMI TUBULAR RIVETS OR (2) 1/4"-20 TRACK BOLTS WITH NUTS OR (2) .28" DIA RESISTANCE SPOT WELDS
TRACK CLIP
EXTERIOR FRAME

DETAIL F

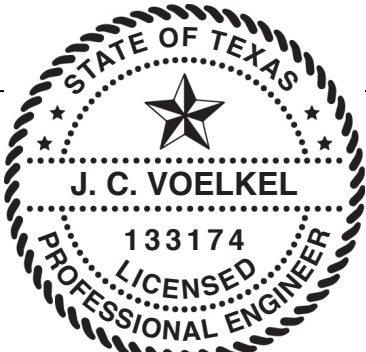


IMPACT WINDOW / ALUMINUM FRAME WITH GROOVED POLYCARBONATE



MIN 3/16" THICK STEEL FOR MOUNTING
MOUNTING WALL ANGLE
TRACK CLIP
1/4-20x9/16" TRACK BOLT AND 1/4-20 HEX NUT
TRACK
OPTIONAL: WALL ANGLE MAY BE ATTACHED TO SUPPORTING STEEL WITH MIN. (1) 1/4-20x7/8" SELF DRILLING SCREW WITH 1" O.D. WASHER AT EACH HOLE OR PAIR OF HOLE LOCATIONS IN LIEU OF WELDING
1/8" 2-24 E60XX MIN.
1/8" 2-24

MOUNTING TO STEEL DETAIL



J. CHRISTIAN VOELKEL, PE
312 N. NEW WARRINGTON ROAD, UNIT 1A
PENSACOLA, FL
FL PE 82229
TX PE 133174

PROFESSIONAL ENGINEER'S SEAL PROVIDED ONLY FOR VERIFICATION OF WINDLOAD CONSTRUCTION DETAILS.



A DIVISION OF OVERHEAD DOOR CORP.
3395 ADDISON DRIVE
PENSACOLA, FLORIDA 32514
(850) 474-9890

STATIC PRESSURE RATINGS		APPROVED SIZES		SCALE: N.T.S.	SIZE: A
DESIGN (PSF):	+31.60/-35.40	MAX WIDTH:	24'-2"	DATE	NAME
TEST (PSF):	+47.40/-53.10	MAX HEIGHT:	24'-1"	DRAWN	TLC
IMPACT/CYCLIC RATED (YES/NO):	YES	MAX SECTION HEIGHT:	24"	CHECKED	TLC
MODELS C20/C24/C2400				SHEET 3 OF 3	
WINDLOAD SPECIFICATION OPTION CODE 2052				DRAWING PART NO.	REV.
				332577	E