

NOTES:

1. GLAZING OPTION - .125" MINIMUM DSB ANNEALED GLAZING MEETS UNIFORM STATIC DESIGN PRESSURES SHOWN ON THIS DRAWING. GLAZING SHALL HAVE A MAXIMUM HEIGHT OF 6.70" AND A MAXIMUM LENGTH OF 24.00". GLAZING IS NOT IMPACT RESISTANT AND DOES NOT MEET THE REQUIREMENTS FOR WIND-BORNE DEBRIS REGIONS. GLAZING CAN BE LOCATED IN ANY SECTION EXCEPT THE BOTTOM, AND ONLY ONE GLAZED SECTION PER DOOR.

2. ALUMINUM FULL VIEW OPTION - ALUMINUM FULL VIEW SECTION MAY REPLACE ANY SECTION EXCEPT TOP AND BOTTOM PANELS. ALUMINUM FULL VIEW SECTION SHALL HAVE RAILS AND STILES OF EXTRUDED ALUMINUM ALLOY 6063-T6 WITH .125" MINIMUM DSB ANNEALED GLAZING INSTALLED WITH ALUMINUM RETAINERS IN ORDER TO MEET UNIFORM STATIC DESIGN PRESSURES SHOWN ON THIS DRAWING. GLAZING IS NOT IMPACT RESISTANT AND DOES NOT MEET THE REQUIREMENTS FOR WIND-BORNE DEBRIS REGIONS.

3. MINIMUM OF 1" OVERLAP ON BOTH JAMBS REQUIRED TO MEET NEGATIVE DESIGN PRESSURES.

4. SLIDE LOCK OR OPERATOR REQUIRED.

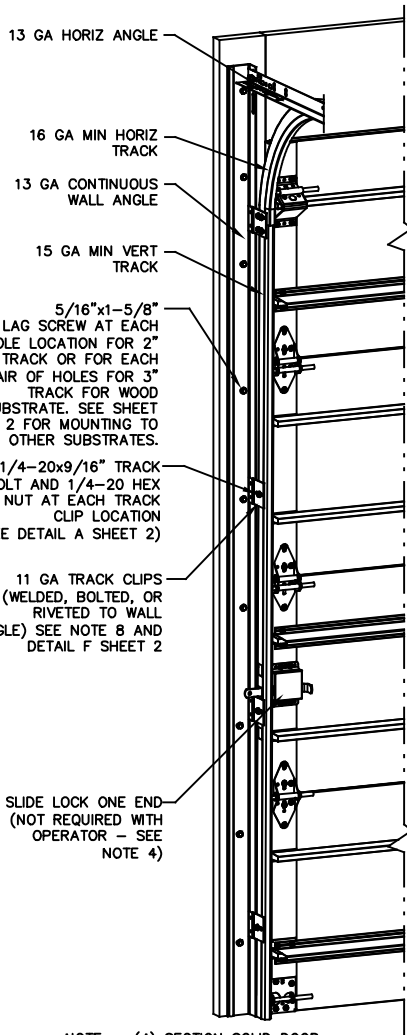
5. SECTION STEEL TO HAVE THE FOLLOWING MINIMUM THICKNESS:
 TS 150 - 29 GA EXTERIOR, 29 GA INTERIOR
 TS 200 - 26 GA EXTERIOR, 26 GA INTERIOR
 TS 200-20 - 20 GA EXTERIOR, 27 GA INTERIOR

6. A 22 GA X 2-1/4" X 3-3/4" BACKUP PLATE SHALL BE LOCATED AT EACH INTERMEDIATE HINGE LOCATION.

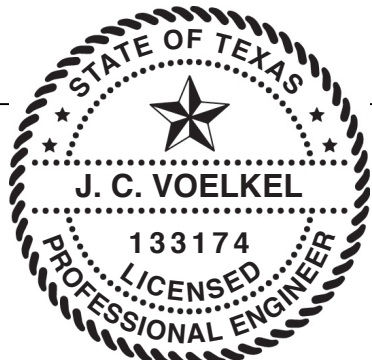
7. THE DESIGN OF THE SUPPORTING STRUCTURAL ELEMENTS SHALL BE THE RESPONSIBILITY OF THE PROFESSIONAL OF RECORD FOR THE BUILDING OR STRUCTURE AND IN ACCORDANCE WITH CURRENT BUILDING CODES FOR THE LOADS LISTED ON THIS DRAWING.

8. TRACK CLIPS SHALL BE LOCATED WITH CENTERLINE OF BOTTOM CLIP SPACED 10" MAX FROM BOTTOM OF TRACK AND REMAINING TRACK CLIPS SPACED AT 24" O.C. MAX. SPACING BETWEEN TOP TRACK CLIP AND SPLICE PLATE SHALL BE 30" O.C. MAX.

9. WHEN MOUNTING TO WOOD, DOOR JAMB TO BE MINIMUM 2x6 NO. 2 SPF LUMBER OR BETTER. REFER TO JAMB CONNECTION SUPPLEMENT FOR ATTACHMENT TO SUPPORTING STRUCTURE.



NOTE: (4) SECTION SOLID DOOR SHOWN. SEE SHEET 2 FOR U-BAR LOCATIONS ON DOORS WITH OTHER SECTION QUANTITIES AND SEE NOTES 1 AND 2 THIS SHEET FOR GLAZING OPTIONS.

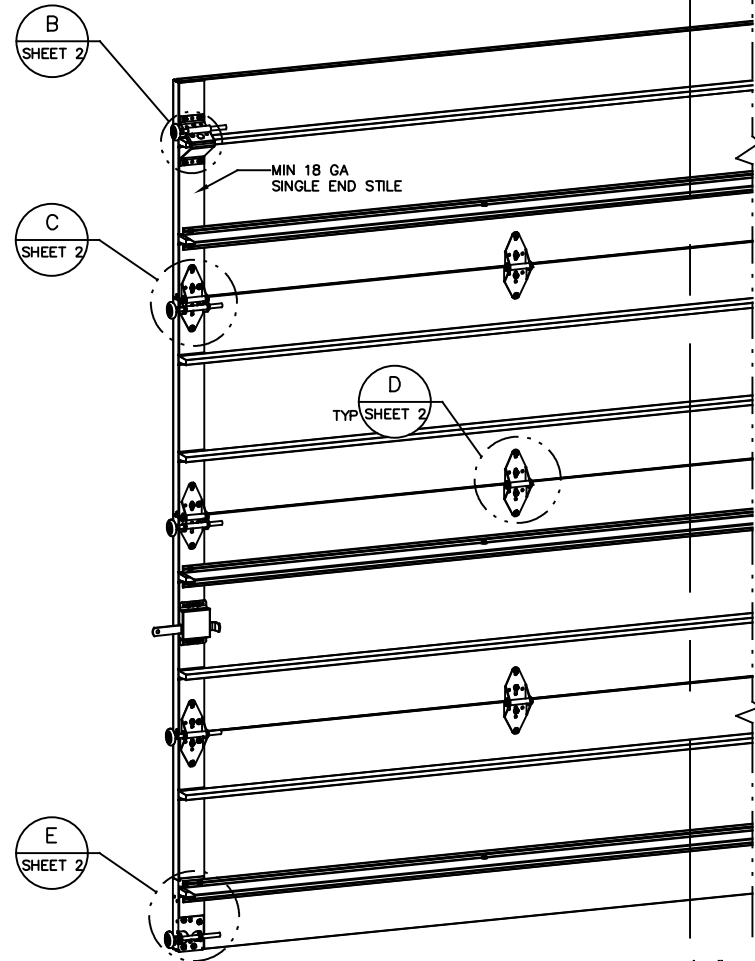


J. CHRISTIAN VOELKEL, PE
 312 N. WARRINGTON RD. UNIT 1A
 PENSACOLA, FL
 FL PE 77945
 TX PE 133174

PROFESSIONAL ENGINEER'S SEAL PROVIDED ONLY FOR VERIFICATION OF WINDLOAD CONSTRUCTION DETAILS.

SUPERIMPOSED DESIGN PRESSURE LOADS ON SUPPORTING STRUCTURE

MAX DOOR WIDTH	DOOR HEIGHT	MAX UNIFORM LOAD EACH JAMB (PLF)
10'-2"	ALL	+144.4/-163.7



NOTE: DOORS ≤ 9'-2" IN WIDTH ONLY REQUIRE ONE CENTER HINGE.

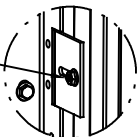
REVISIONS

- P1 REMOVED SECTION LIMITATION FOR STANDARD GLAZING GRT 5/9/08
- P2 UPDATED TITLE BLOCK. GRT 3/26/12
- P3 UPDATED TITLE BLOCK ESC 10/18/17
- REV D UPDATED PRINT TO MATCH RECERT TESTING TLC 04/07/20
- REV E ADDED IRC/IBC NOTE TLC 9/15/20
- REV F ADDED THIRD PAGE FOR GLAZING INFO TLC 3/11/21

THE DOORS ARE DESIGNED AND MANUFACTURED TO COMPLY WITH THE 2018 IRC AND THE 2018 IBC.

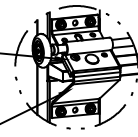
<p>WAYNE DALTON GARAGE DOORS</p> <p>A DIVISION OF OVERHEAD DOOR CORP 3395 ADDISON DRIVE PENSACOLA, FLORIDA 32514 (850) 474-9890</p>	STATIC PRESSURE RATINGS		APPROVED SIZES	SCALE: N.T.S.	SIZE: A	
	DESIGN (PSF):	+28.40/-32.20	MAX WIDTH:	10'-2"	DATE	NAME
	TEST (PSF):	+42.60/-48.30	MAX HEIGHT:	24'-1"	DRAWN	GRT
	IMPACT/CYCLIC RATED (YES/NO):	YES	MAX SECTION HEIGHT:	24"	CHECKED	TLC
MODEL TS 150/200/200-20				SHEET 1 OF 3		
WINDLOAD SPECIFICATION OPTION CODE 2112				DRAWING PART NO.	REV.	
				332625	F	

1/4-20x9/16" TRACK BOLT AND 1/4-20 HEX NUT THROUGH THE SLOT IN THE TRACK AND TRACK CLIP



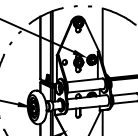
DETAIL A

12 GA ROLLER SLIDE ATTACHED TO BRACKET WITH 5/16-18 BOLT & NUT IN CENTER SLOT AND 1/4-20x9/16" TRACK BOLT & 1/4-20 HEX NUT THROUGH ANY TWO ALIGNING HOLES



DETAIL B

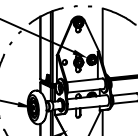
12 GA COMMERCIAL 'A' FRAME TOP BRACKET ATTACHED WITH (4) 1/4-20x11/16" SELF DRILLING SCREWS



DETAIL C

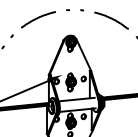
ADD (2) 1/4-20x11/16" SELF DRILLING SCREWS (INSIDE OF ALL END HINGES)

2" STEEL ROLLER WITH 5-1/8" STEM



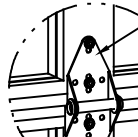
DETAIL C

14 GA WIDE BODY END HINGE TO ATTACH SECTIONS ONE AND TWO.
13 GA WIDE BODY END HINGE TO ATTACH REMAINING SECTIONS.
FOR ALL, ATTACH WITH (4) 1/4-20x11/16" SELF DRILLING SCREWS



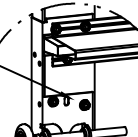
SOLID SECTION

14 GA WIDE BODY HINGE ATTACHED WITH (4) 1/4-20x11/16" SELF DRILLING SCREWS

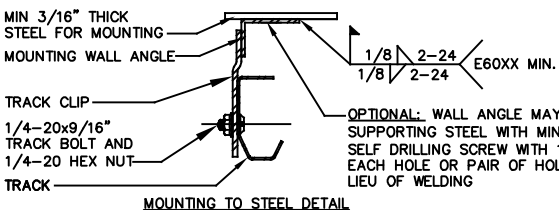


AFV SECTION

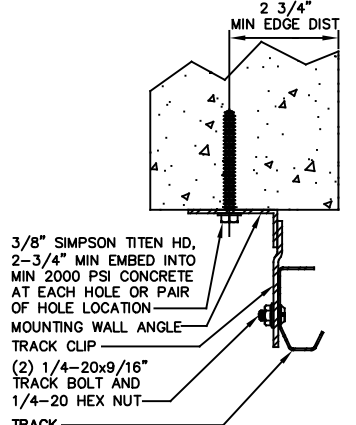
12 GA BOTTOM BRACKET ATTACHED WITH (6) 1/4-20x11/16" SELF DRILLING SCREWS



DETAIL E

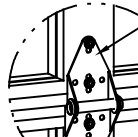


MOUNTING TO STEEL DETAIL

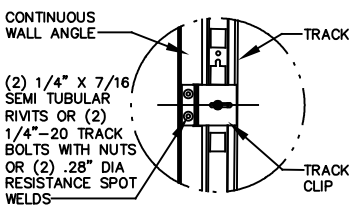


CONCRETE MOUNTING DETAIL

14 GA WIDE BODY HALF HINGE ATTACHED WITH (4) 1/4-20x11/16" SELF DRILLING SCREWS

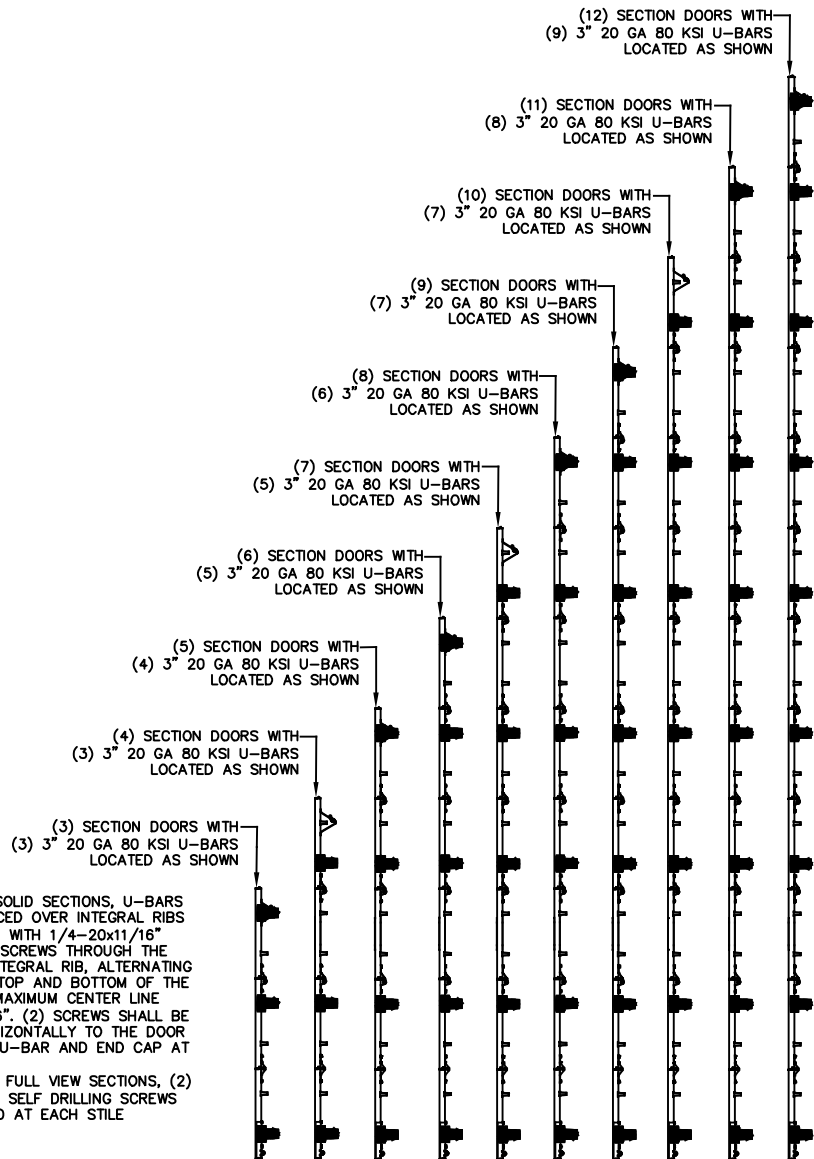


AFV SECTION

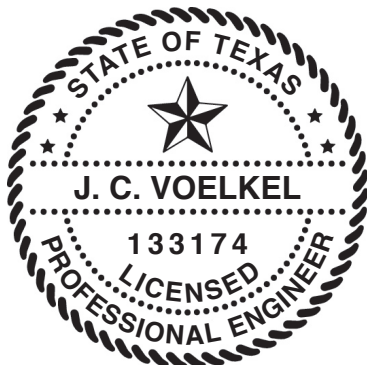


DETAIL F

U-BAR LOCATIONS



NOTE: FOR SOLID SECTIONS, U-BARS SHALL BE PLACED OVER INTEGRAL RIBS AND ATTACHED WITH 1/4-20x11/16" SELF DRILLING SCREWS THROUGH THE U-BAR AND INTEGRAL RIB, ALTERNATING BETWEEN THE TOP AND BOTTOM OF THE U-BAR AT A MAXIMUM CENTER LINE SPACING OF 36". (2) SCREWS SHALL BE INSTALLED HORIZONTALLY TO THE DOOR THROUGH THE U-BAR AND END CAP AT EACH END.
FOR ALUMINUM FULL VIEW SECTIONS, (2) 1/4-20x11/16" SELF DRILLING SCREWS SHALL BE USED AT EACH STILE LOCATION.



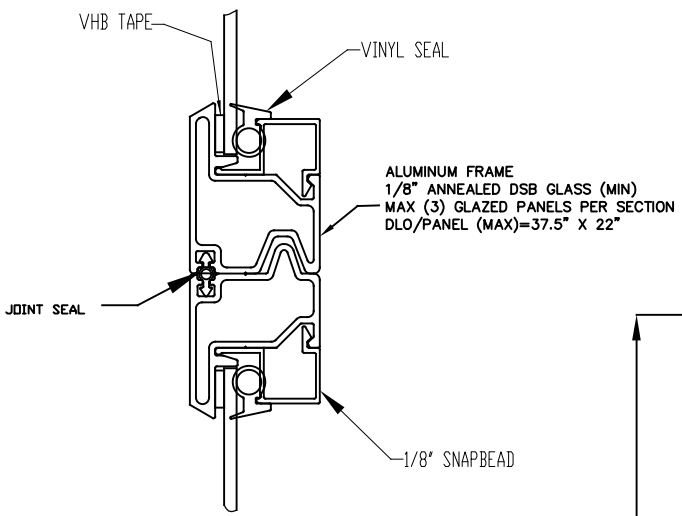
J. CHRISTIAN VOELKEL, PE
312 N. WARRINGTON RD. UNIT 1A
PENSACOLA, FL
FL PE 77945
TX PE 133174

PROFESSIONAL ENGINEER'S SEAL PROVIDED ONLY FOR VERIFICATION OF WINDLOAD CONSTRUCTION DETAILS.

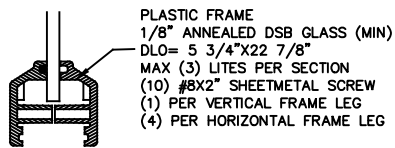
Wayne Dalton GARAGE DOORS

A DIVISION OF OVERHEAD DOOR CORP.
3395 ADDISON DRIVE
PENSACOLA, FLORIDA 32514
(850) 474-9890

STATIC PRESSURE RATINGS		APPROVED SIZES		SCALE: N.T.S.		SIZE: A	
DESIGN (PSF):	+28.40/-32.20	MAX WIDTH:	10'-2"	DATE	NAME		
TEST (PSF):	+42.60/-48.30	MAX HEIGHT:	24'-1"	DRAWN	GRT		
IMPACT/CYCLIC RATED (YES/NO):	YES	MAX SECTION HEIGHT:	24"	CHECKED	TLC		
MODEL TS 150/200/200-20				SHEET 2 OF 3			
WINDLOAD SPECIFICATION OPTION CODE 2112				DRAWING PART NO.		REV.	
				332625		F	



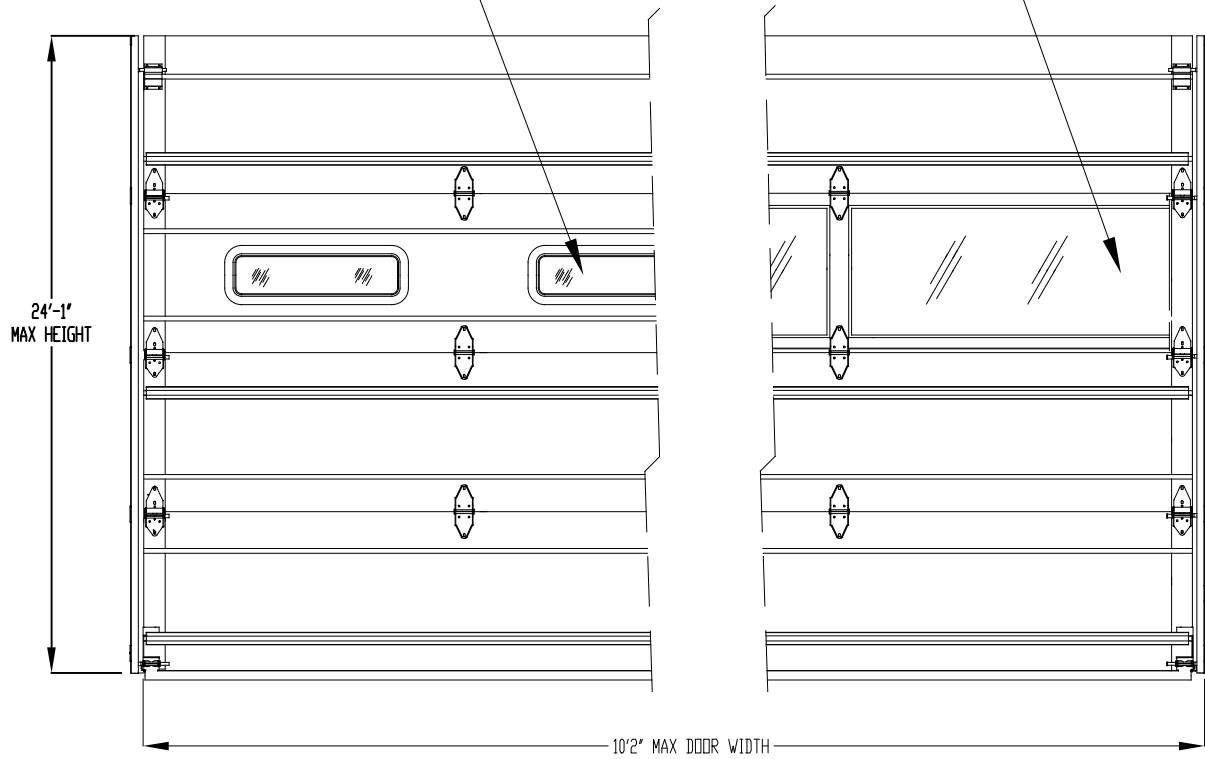
ALUMINUM FULL VIEW 1/8" GLAZING OPTION
PLACEMENT RESTRICTIONS: SEE NOTE 2



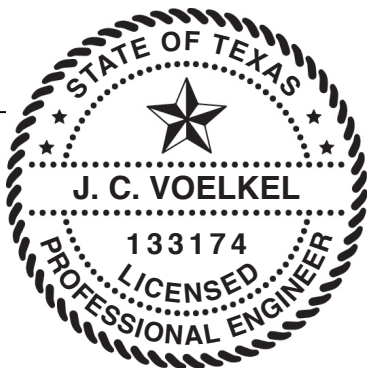
NON-IMPACT RESISTANT GLAZING OPTION
LOCATION RESTRICTIONS: SEE NOTE 1

1 OPTIONAL
NON-IMPACT RESISTANT
GLAZING OPTION

2 OPTIONAL
NON-IMPACT RESISTANT
FULL VIEW SECTION



INTERIOR DOOR ELEVATION DEPICTION
TO DEMONSTRATE GLAZING PLACEMENT
(4) SECTION DOOR SHOWN



J. CHRISTIAN VOELKEL, PE
312 N. WARRINGTON RD. UNIT 1A
PENSACOLA, FL
FL PE 77945
TX PE 133174

PROFESSIONAL ENGINEER'S SEAL PROVIDED ONLY FOR
VERIFICATION OF WINDLOAD CONSTRUCTION DETAILS.



A DIVISION OF OVERHEAD DOOR CORP.
3395 ADDISON DRIVE
PENSACOLA, FLORIDA 32514
(850) 474-9890

STATIC PRESSURE RATINGS		APPROVED SIZES	SCALE: N.T.S.	SIZE: A
DESIGN (PSF):	+28.40/-32.20	MAX WIDTH: 10'-2"	DATE	NAME
TEST (PSF):	+42.60/-48.30	MAX HEIGHT: 24'-1"	DRAWN	GRT
IMPACT/CYCLIC RATED (YES/NO):	YES	MAX SECTION HEIGHT: 24"	CHECKED	TLC
MODEL TS 150/200/200-20			SHEET 3 OF 3	
WINDLOAD SPECIFICATION OPTION CODE 2112			DRAWING PART NO.	REV.
			332625	F