

SECTION B-B

NOTE: ALL NON-DESCRIPTIVE FASTENERS SHOWN TO BE 1/4"-20 X 5/8" HEX BOLTS & NUTS OR 1/4" X 3/4" LONG HEX HEAD SHEET METAL SCREWS.

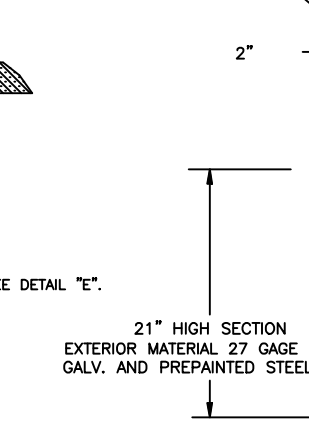
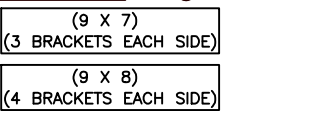
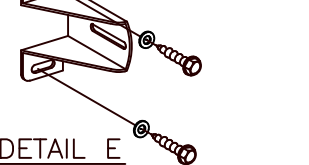
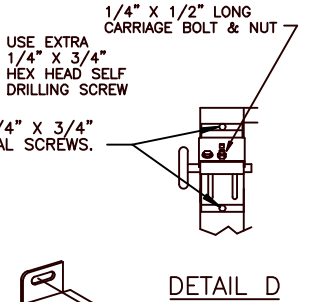
P.S.F. TABLE					
DOOR SIZE	DESIGN PRESSURE	TEST PRESSURE			
		POSITIVE	NEGATIVE	POSITIVE	NEGATIVE
9'-0" W	7'-0" H	+31.2	-35.8	+46.8	-53.7
9'-0" W	8'-0" H	+31.2	-35.8	+46.8	-53.7

DOORS SHOWN ON THIS DRAWING HAVE BEEN DEMONSTRATED TO WITHSTAND THE PRESSURES LISTED IN THE TABLE ABOVE VIA TESTING TO ANSI/DASMA 108-05/12/17.

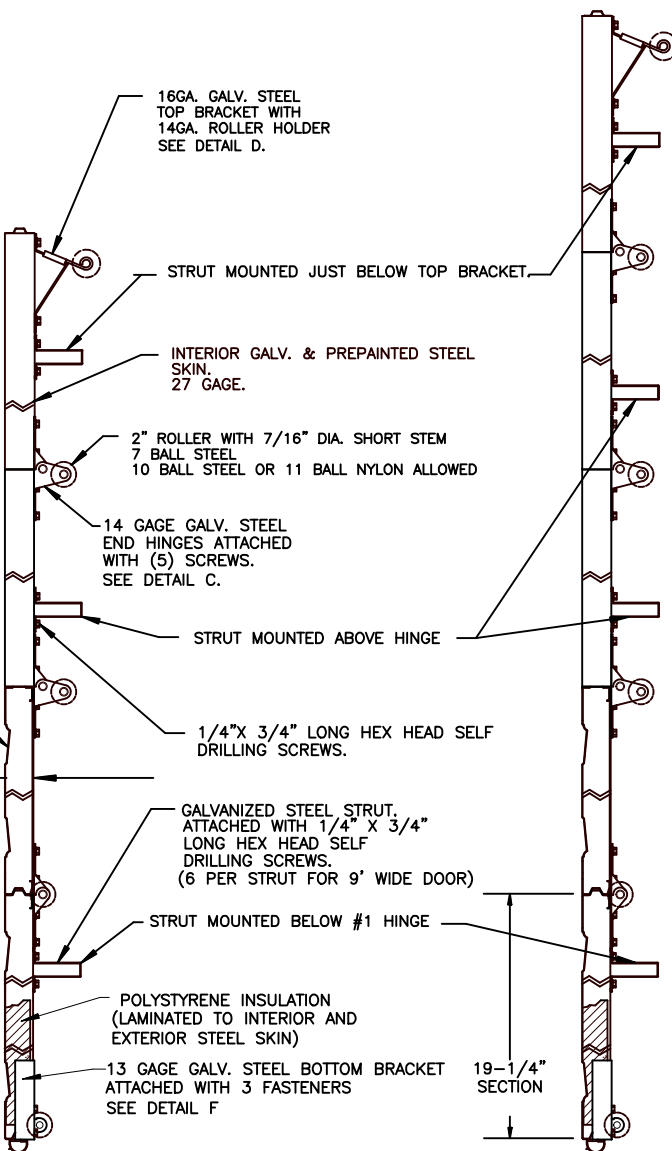
DETERMINATION OF SUITABILITY FOR SPECIFIC SITES IS THE RESPONSIBILITY OF OTHERS. COMPLIES WITH THE WINDLOAD REQUIREMENTS OF THE IBC/IRC 2018.

John E. Scates PE
2560 King Arthur Blvd #124-54
Lewisville, TX 75056
TX-PE 56308, F-2203
FL-PE-51737

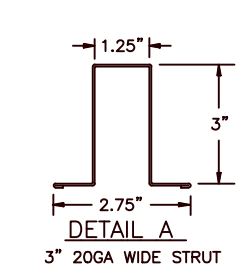
Professional Engineer's seal provided only for verification of windload construction details.



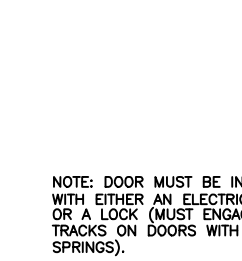
SECTION A-A



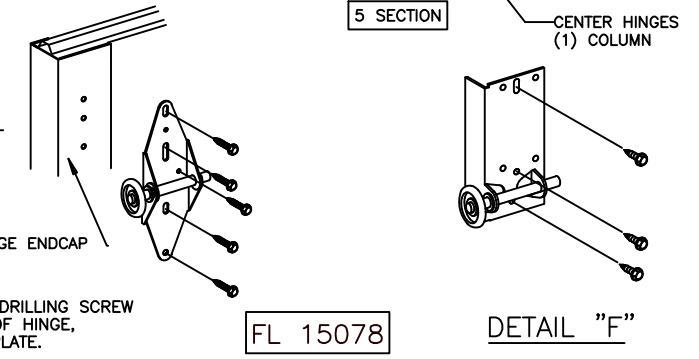
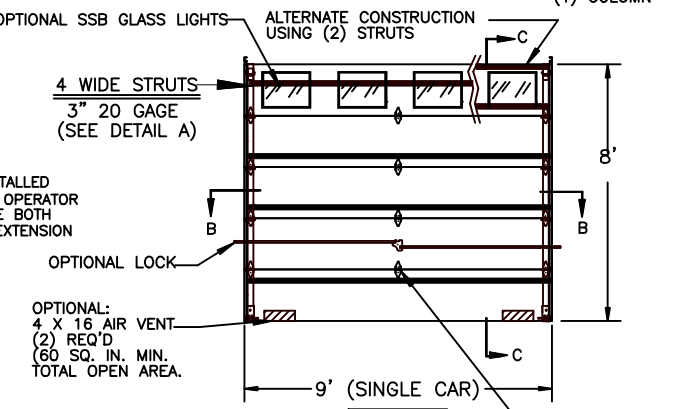
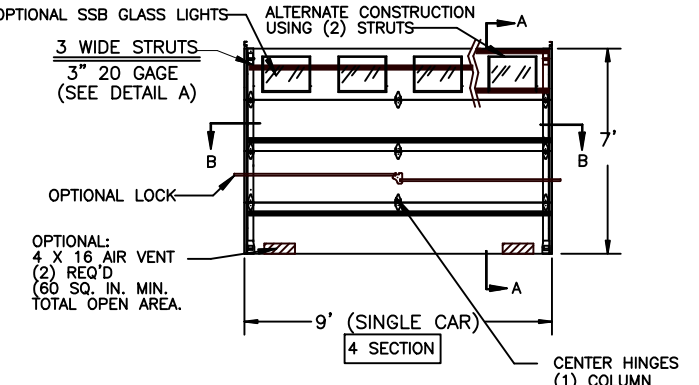
SECTION C-C



DETAIL A



DETAIL C



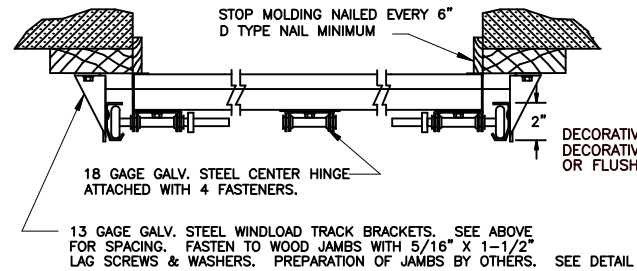
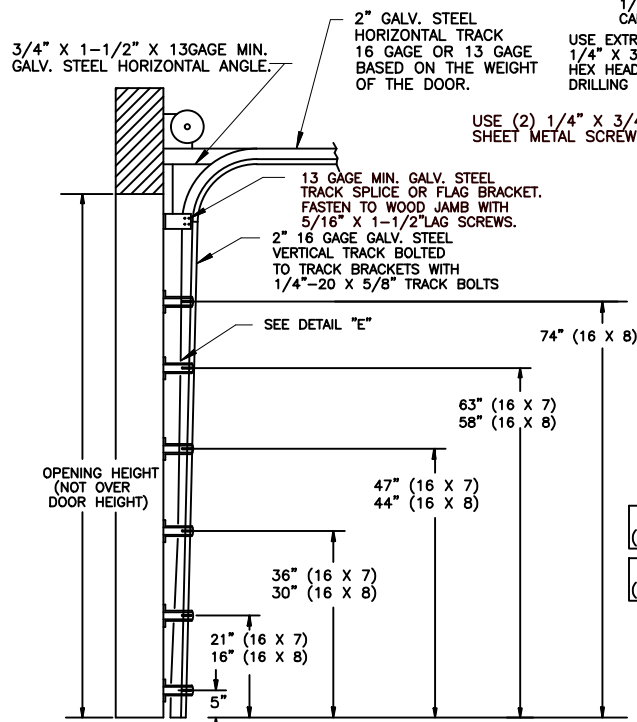
NOTE: GLAZING DOES NOT SATISFY IMPACT DEBRIS REQUIREMENTS IN FBC

REV.	E.C.N.	DATE	APPROV.
D		5/29/20	
C		1/28/13	
B		12/15/11	RLB
A	2866	3/10/08	RLB
	2851	11/1/07	RLB

W WINDSOR DOOR

5800 SCOTT HAMILTON DR. LITTLE ROCK, AR 72209 (501) 562-1872

MODELS: 790		PART NAME: WINDLOAD RESIDENTIAL SANDWICH DOOR W4 B	
TOLERANCE	FRAC. ± 1/64" DEC. ± .015 ANG. ± 1°	NEXT LEVEL	DATE: 11/1/07
SCALE	PLOT SCALE	DRN. BY BH	DWG. NO. 99-B-088
			SHT 1 OF 3



SECTION B-B

NOTE: ALL NON-DESCRIPTIVE FASTENERS SHOWN TO BE 1/4"-20 X 5/8" HEX BOLTS & NUTS OR 1/4" X 3/4" LONG HEX HEAD SELF DRILLING METAL SCREWS.

P.S.F. TABLE					
DOOR SIZE		DESIGN PRESSURE		TEST PRESSURE	
WIDTH	HEIGHT	POSITIVE	NEGATIVE	POSITIVE	NEGATIVE
16'-0"	7'-0"	+35.3	-38.9	+53.0	-58.4
16'-0"	8'-0"	+35.3	-38.9	+53.0	-58.4

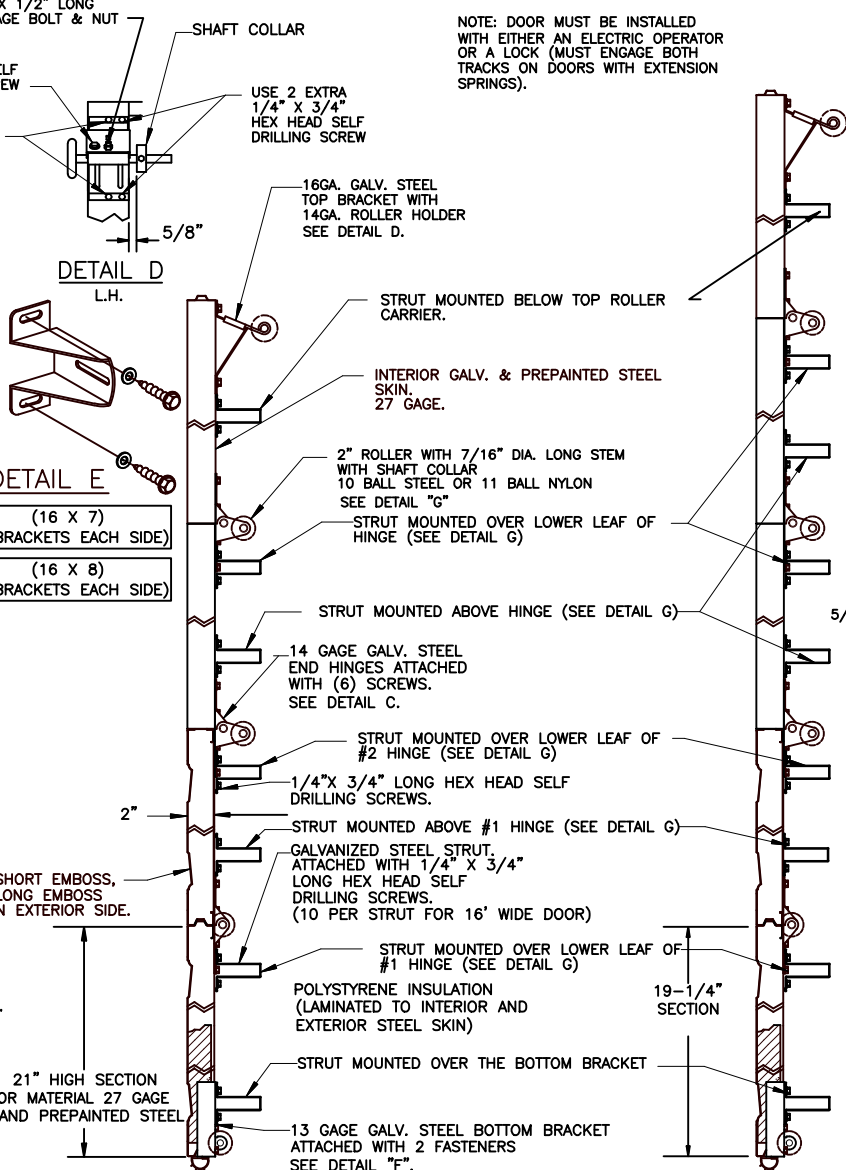
DOORS SHOWN ON THIS DRAWING HAVE BEEN DEMONSTRATED TO WITHSTAND THE PRESSURES LISTED IN THE TABLE ABOVE VIA TESTING TO ANSI/DASMA 108-05/12/17.

DETERMINATION OF SUITABILITY FOR SPECIFIC SITES IS THE RESPONSIBILITY OF OTHERS.

COMPLIES WITH THE WINDLOAD REQUIREMENTS OF THE IBC/IRC 2018.

John E. Scates PE
2560 King Arthur Blvd #124-54
Lewisville, TX 75056
TX-PE 56308, F-2203
FL-PE-51737

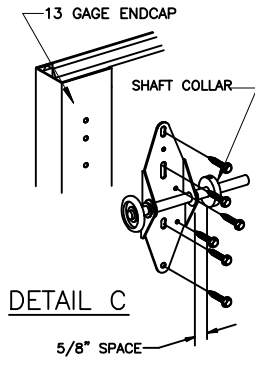
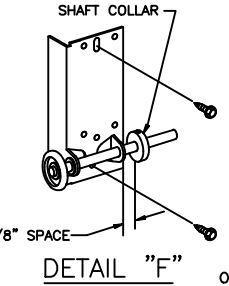
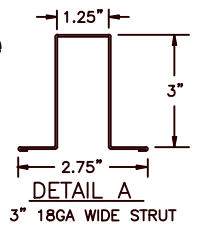
Professional Engineer's seal provided only for verification of windload construction details.



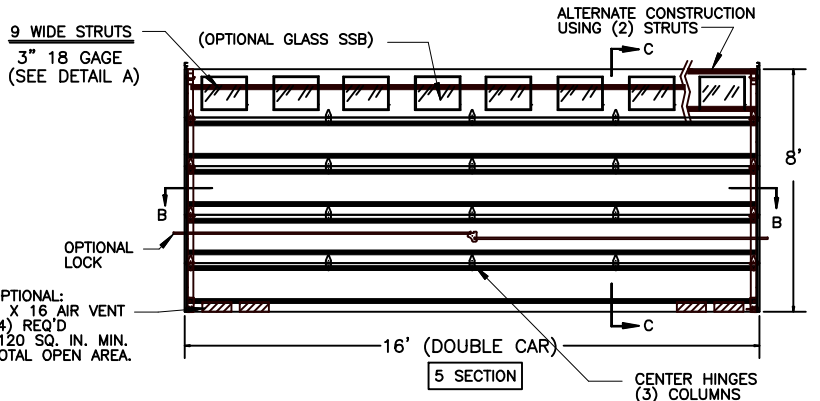
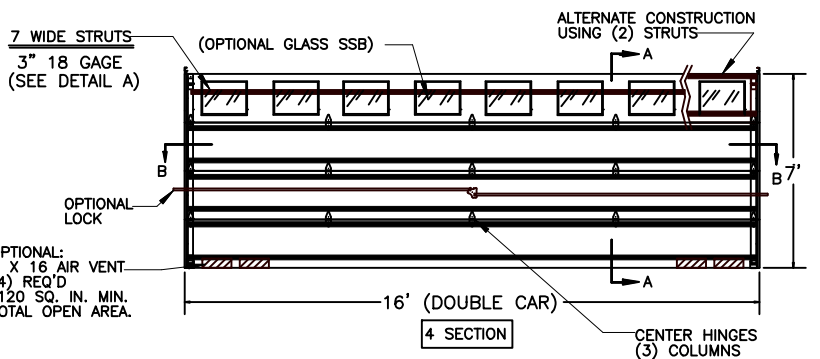
SECTION A-A

SECTION C-C

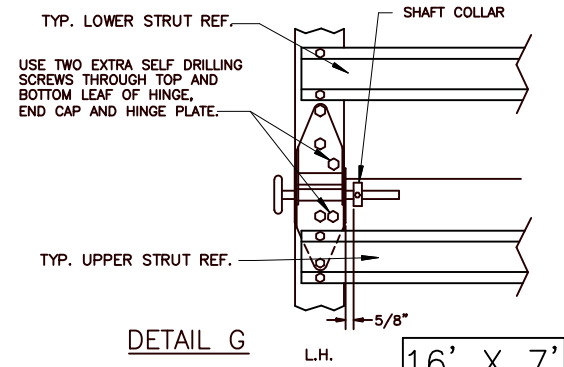
NOTE: DOOR MUST BE INSTALLED WITH EITHER AN ELECTRIC OPERATOR OR A LOCK (MUST ENGAGE BOTH TRACKS ON DOORS WITH EXTENSION SPRINGS).



DETAIL C



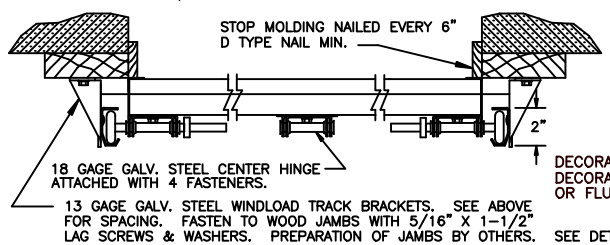
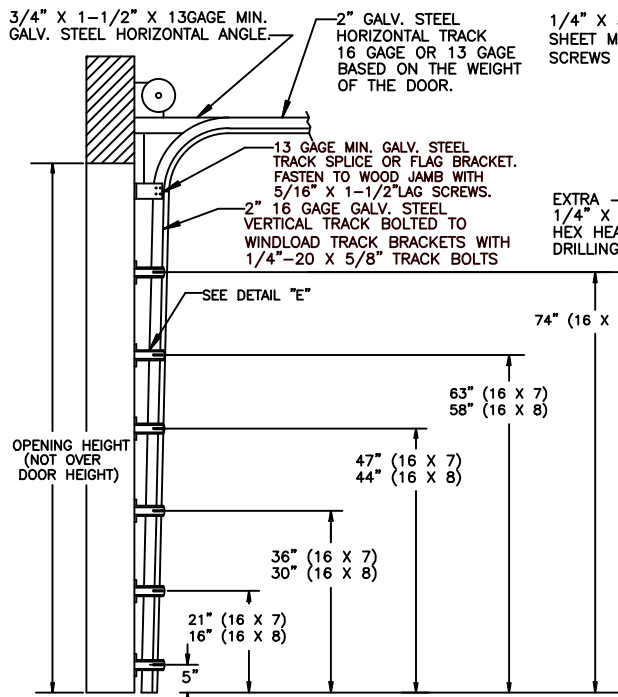
NOTE: GLAZING DOES NOT SATISFY IMPACT DEBRIS REQUIREMENTS IN FBC



DETAIL G

16' X 7'
16' X 8'
FL 15078

WINDSOR DOOR				5800 SCOTT HAMILTON DR. LITTLE ROCK, AR 72209 (501) 562-1872	
MODELS: 790				PART NAME: WINDLOAD RESIDENTIAL SANDWICH DOOR W4 B	
D	ROLLER NOTES, PE ADDRESS	5/29/20	TOLERANCE		
C	REV LOGO & ADDRESS	1/28/13	FRAC. ± 1/64"	DATE: 11/1/07	DWG. NO. 99-B-088
B	12/15/11	RLB	DEC. ± .015	DRN. BY BH	SHT 2 OF 3
A	2866	3/10/08	ANG. ± 1'	SCALE	
REV.	E.C.N.	DATE:	APPROV.	PLOT SCALE	



NOTE: ALL NON-DESCRIPTIVE FASTENERS SHOWN TO BE 1/4"-20 X 5/8" HEX BOLTS & NUTS OR 1/4" X 3/4" LONG HEX HEAD SHEET METAL SCREWS.

DOOR SIZE	P.S.F. TABLE			
	DESIGN PRESSURE	TEST PRESSURE	DESIGN PRESSURE	TEST PRESSURE
WIDTH HEIGHT	POSITIVE	NEGATIVE	POSITIVE	NEGATIVE
18'-0" 7'-0"	+31.2	-34.0	+46.8	-51.0
18'-0" 8'-0"	+31.2	-34.0	+46.8	-51.0

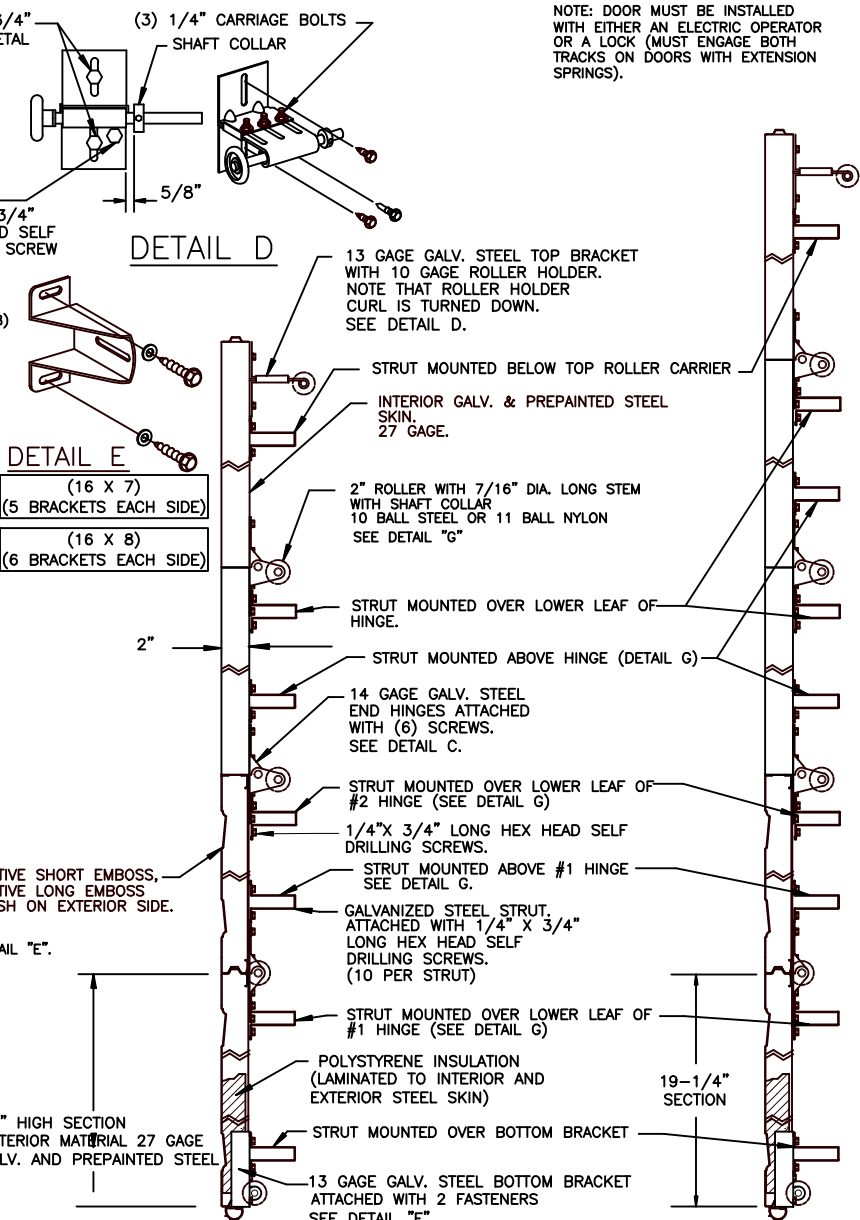
DOORS SHOWN ON THIS DRAWING HAVE BEEN DEMONSTRATED TO WITHSTAND THE PRESSURES LISTED IN THE TABLE ABOVE VIA TESTING TO ANSI/DASMA 108-05/12/17.

DETERMINATION OF SUITABILITY FOR SPECIFIC SITES IS THE RESPONSIBILITY OF OTHERS.

COMPLIES WITH THE WINDLOAD REQUIREMENTS OF THE IBC/IRC 2018.

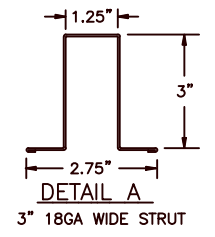
John E. Scates PE
2560 King Arthur Blvd #124-54
Lewisville, TX 75056
TX-PE 56308, F-2203
FL-PE-51737

Professional Engineer's seal provided only for verification of windload construction details.

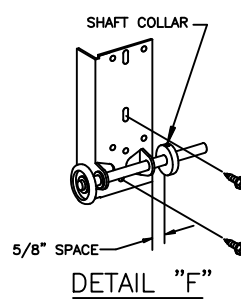
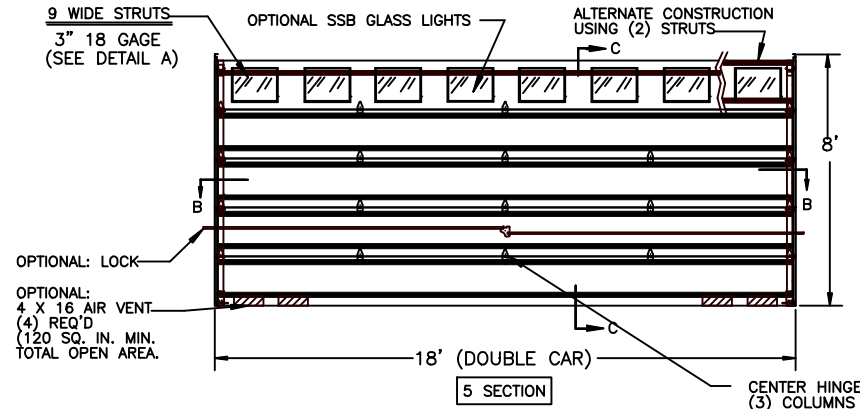
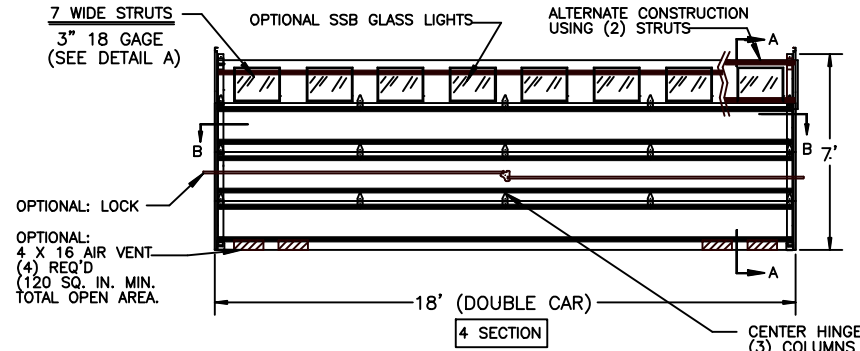


SECTION A-A 4 SECTION
SECTION C-C 5 SECTION

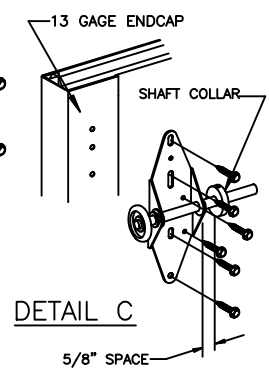
NOTE: DOOR MUST BE INSTALLED WITH EITHER AN ELECTRIC OPERATOR OR A LOCK (MUST ENGAGE BOTH TRACKS ON DOORS WITH EXTENSION SPRINGS).



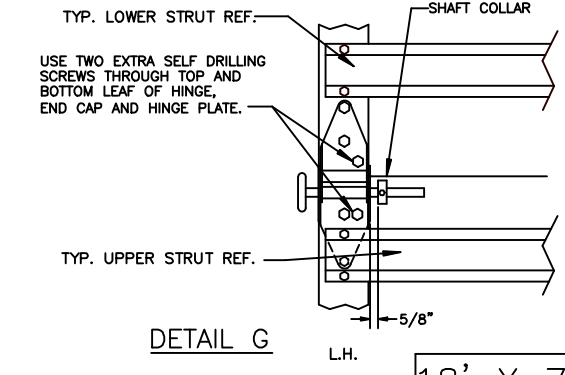
DETAIL A
3" 18GA WIDE STRUT



DETAIL F



DETAIL C



DETAIL G

NOTE: GLAZING DOES NOT SATISFY IMPACT DEBRIS REQUIREMENTS IN FBC

FL 15078
18' X 7'
18' X 8'

REV.	E.C.N.	DATE:	APPROV.
D	ROLLER NOTES, PE ADDRESS	5/29/20	
C	REV LOGO & ADDRESS	1/28/13	
B		12/15/11	RLB
A	2866	3/10/08	RLB
	2851	11/1/07	RLB

W WINDSOR DOOR

5800 SCOTT HAMILTON DR.
LITTLE ROCK, AR 72209
(501) 562-1872

MODELS: 790

PART NAME: WINDLOAD RESIDENTIAL SANDWICH DOOR W4 B

DATE: 11/1/07

DWG. NO. 99-B-088

SHT 3 OF 3