

SECTION B-B

P.S.F. TABLE					
DOOR SIZE		DESIGN PRESSURE		TEST PRESSURE	
WIDTH	HEIGHT	POSITIVE	NEGATIVE	POSITIVE	NEGATIVE
9'-0"	7'-0"	+22.9	-26.4	+34.4	-39.6

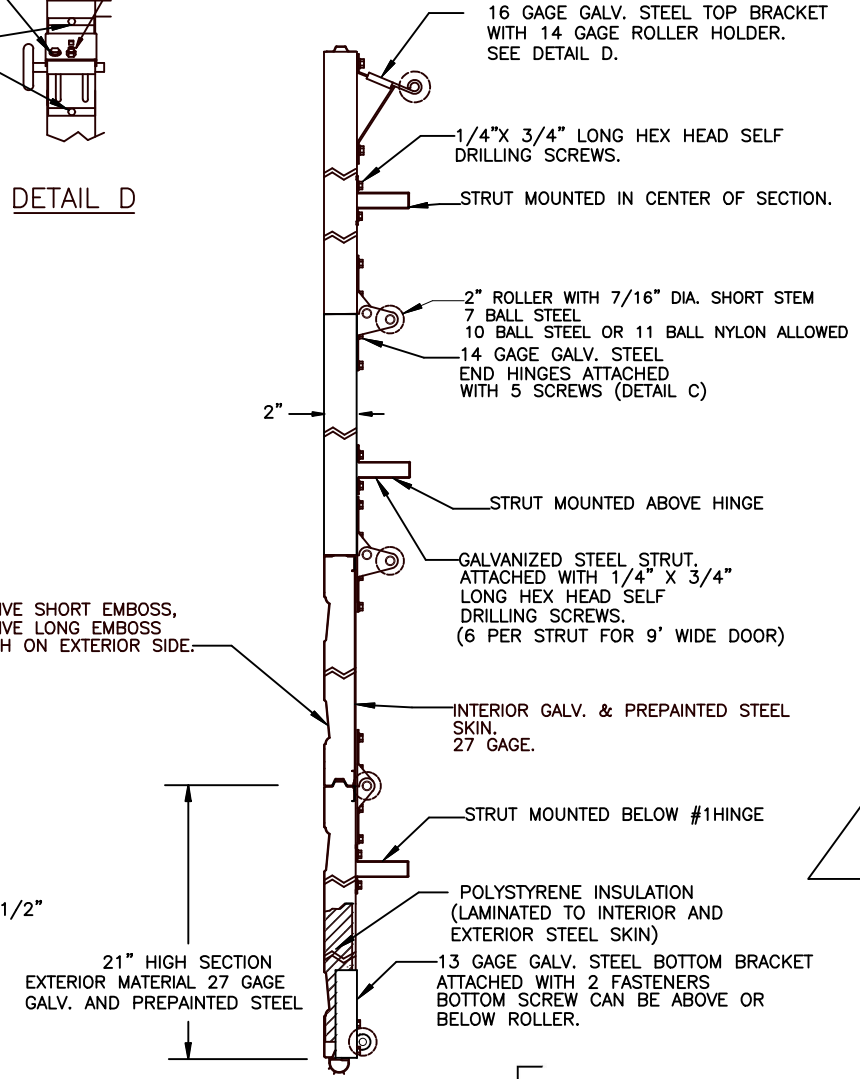
DOORS SHOWN ON THIS DRAWING HAVE BEEN DEMONSTRATED TO WITHSTAND THE PRESSURES LISTED IN THE TABLE ABOVE VIA TESTING TO ANSI/DASMA 108-05/12/17.

DETERMINATION OF SUITABILITY FOR SPECIFIC SITES IS THE RESPONSIBILITY OF OTHERS.

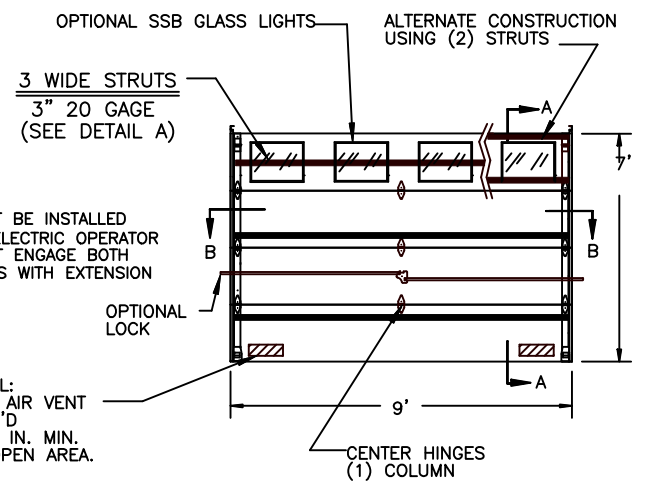
John E Scates PE  
2560 King Arthur Blvd #124-54  
Lewisville, TX 75056  
TX-PE 56308, F-2203  
FL-PE-51737

Professional Engineer's seal provided only for verification of windload construction details.

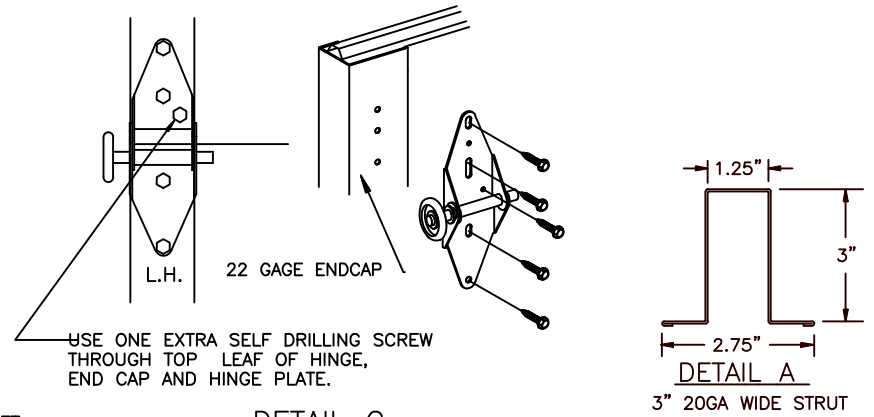
COMPLIES WITH THE WINDLOAD REQUIREMENTS OF THE IBC/IRC 2018.



SECTION A-A



NOTE: ALL NON-DESCRIPTIVE FASTENERS SHOWN TO BE 1/4"-20 X 5/8" HEX BOLTS & NUTS OR 1/4" X 3/4" LONG HEX HEAD SHEET METAL SCREWS.



DETAIL C

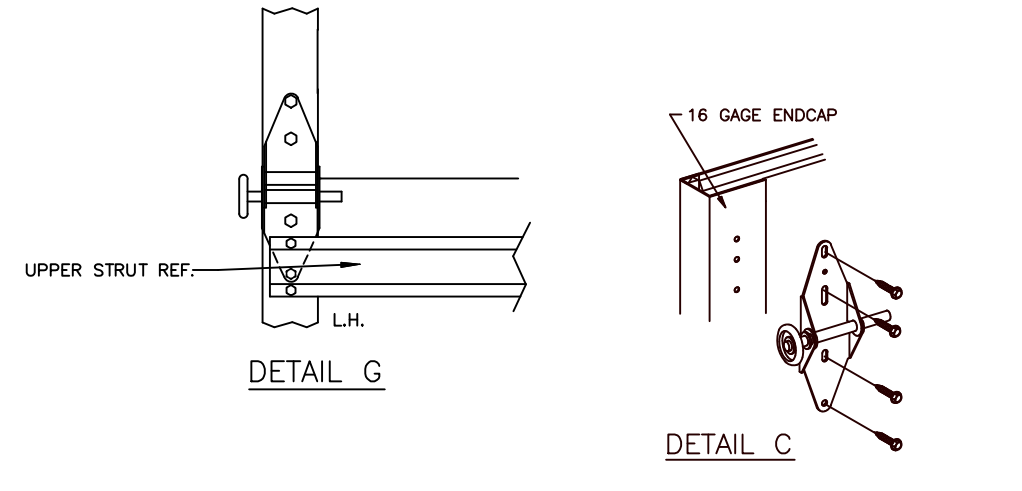
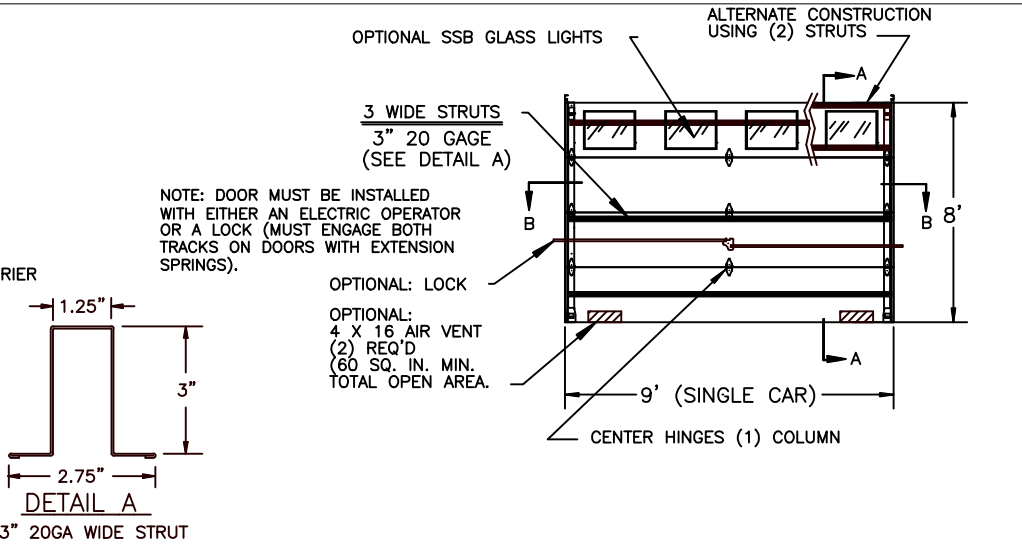
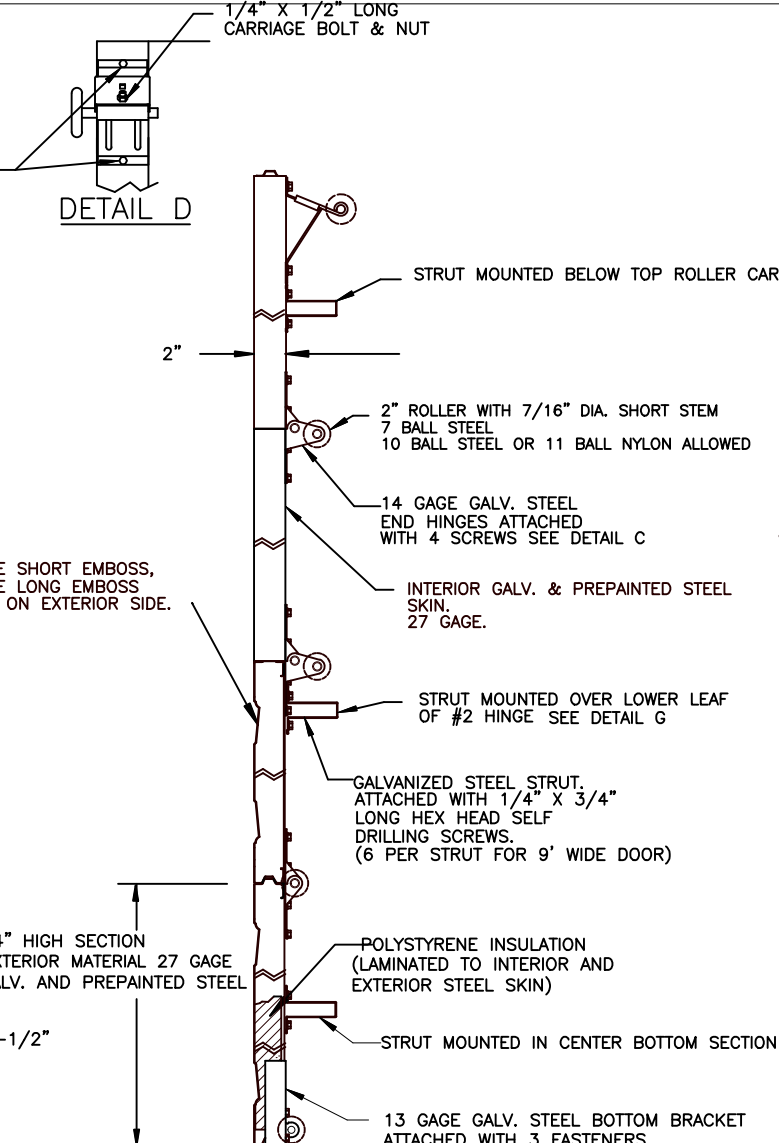
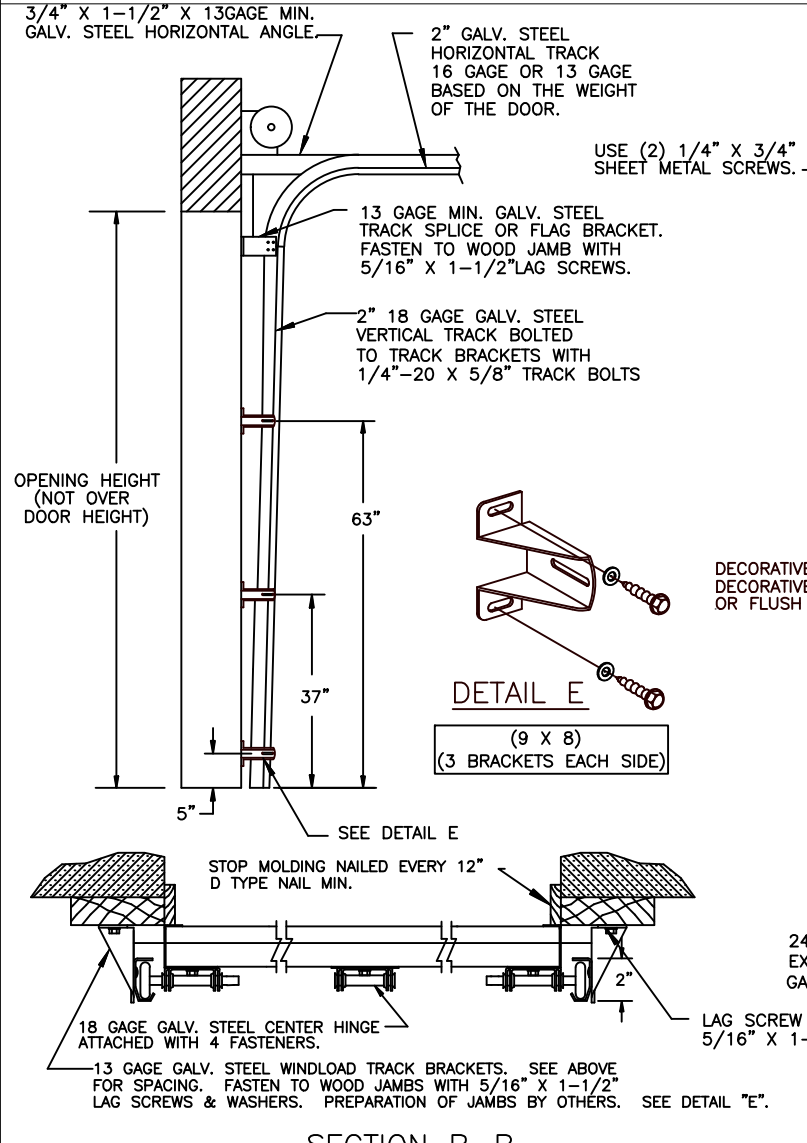
NOTE: GLAZING DOES NOT SATISFY IMPACT DEBRIS REQUIREMENTS IN FBC

FL 15078

9 X 7

D	ROLLER NOTES, PE ADDRESS	5/29/20	
C	REV LOGO & ADDRESS	1/28/13	
B		12/15/11	RLB
A	2866	3/10/08	RLB
	2851	11/1/07	RLB
REV.	E.C.N.	DATE:	APPROV.

<b>W WINDSOR DOOR</b>		5800 SCOTT HAMILTON DR. LITTLE ROCK, AR 72209 (501) 562-1872	
MODELS: 790		PART NAME: WINDLOAD RESIDENTIAL SANDWICH DOOR W2 B	
TOLERANCE	FRAC. ± 1/64" DEC. ± .015 ANG. ± 1°	NEXT LEVEL	DATE: 10/11/07
SCALE	PLOT SCALE	DRN. BY BH	DWG. NO. 99-B-086
SHT 1 OF 4			



**SECTION B-B**

DOOR SIZE		P.S.F. TABLE			
WIDTH	HEIGHT	DESIGN PRESSURE	TEST PRESSURE	POSITIVE	NEGATIVE
9'-0"	8'-0"	+27.0	-30.4	+40.5	-45.6

NOTE: ALL NON-DESCRIPTIVE FASTENERS SHOWN TO BE 1/4"-20 X 5/8" HEX BOLTS & NUTS OR 1/4" X 3/4" LONG HEX HEAD SHEET METAL SCREWS.

DOORS SHOWN ON THIS DRAWING HAVE BEEN DEMONSTRATED TO WITHSTAND THE PRESSURES LISTED IN THE TABLE ABOVE VIA TESTING TO ANSI/DASMA 108-05/12/17.

DETERMINATION OF SUITABILITY FOR SPECIFIC SITES IS THE RESPONSIBILITY OF OTHERS.

John E. Scates PE  
2560 King Arthur Blvd #124-54  
Lewisville, TX 75058  
TX-PE 56308, F-2203  
FL-PE-51737

Professional Engineer's seal provided only for verification of windload construction details.

COMPLIES WITH THE WINDLOAD REQUIREMENTS OF THE IBC/IRC 2018.

NOTE: GLAZING DOES NOT SATISFY IMPACT DEBRIS REQUIREMENTS IN FBC

FL 15078 9 X 8

REV.		E.C.N.	DATE:	APPROV.	SCALE	TOLERANCE		PART NAME:	
D	ROLLER NOTES, PE ADDRESS		5/29/20		NONE	FRAC. ± 1/64" DEC. ± .015 ANG. ± 1'		WINDLOAD RESIDENTIAL SANDWICH DOOR W2 B	
C	REV LOGO & ADDRESS		1/28/13			NEXT LEVEL		DATE: 11/1/07	
B			12/15/11	RLB		PLOT SCALE		DRN. BY BH	
A	2866		3/10/08	RLB		DWG. NO.		99-B-086	
	2851		11/1/07	RLB		SHT 2 OF 4			

**W WINDSOR DOOR**  
5800 SCOTT HAMILTON DR.  
LITTLE ROCK, AR 72209  
(501) 562-1872

MODELS: 790

DATE:	11/1/07
DRN. BY	BH

3/4" X 1-1/2" X 13GAGE MIN. GALV. STEEL HORIZONTAL ANGLE.

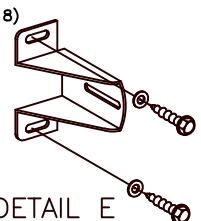
2" GALV. STEEL HORIZONTAL TRACK 16 GAGE OR 13 GAGE BASED ON THE WEIGHT OF THE DOOR.

1/4" X 1/2" LONG CARRIAGE BOLT & NUT  
USE EXTRA 1/4" X 3/4" HEX HEAD SELF DRILLING SCREW  
USE (2) 1/4" X 3/4" SHEET METAL SCREWS.

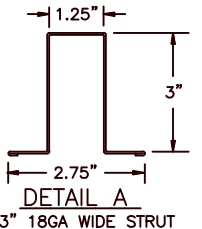
13 GAGE MIN. GALV. STEEL TRACK SPLICE OR FLAG BRACKET. FASTEN TO WOOD JAMB WITH 5/16" X 1-1/2" LAG SCREWS.

2" 16 GAGE GALV. STEEL VERTICAL TRACK BOLTED TO TRACK BRACKETS WITH 1/4"-20 X 5/8" TRACK BOLTS

DETAIL D



74" (16 X 8)  
SEE DETAIL E  
54" (16 X 7)  
50" (16 X 8)  
36" (16 X 7)  
24" (16 X 8)  
16 X 7  
3 BRACKETS EACH SIDE  
16 X 8  
4 BRACKETS EACH SIDE



DETAIL A  
3" 18GA WIDE STRUT

NOTE: DOOR MUST BE INSTALLED WITH EITHER AN ELECTRIC OPERATOR OR A LOCK (MUST ENGAGE BOTH TRACKS ON DOORS WITH EXTENSION SPRINGS).

16 GAGE GALV. STEEL TOP BRACKET WITH 14 GAGE ROLLER HOLDER (SEE DETAIL D)

STRUT MOUNTED BELOW TOP ROLLER CARRIER

INTERIOR GALV. & PREPAINTED STEEL SKIN. 27 GAGE.

1/4" X 3/4" LONG HEX HEAD SELF DRILLING SCREWS.

STRUT ON UPPER PART OF SECTION OVER HINGE LEAF. (SEE DETAIL B).

2" ROLLER WITH 7/16" DIA. SHORT STEM  
7 BALL STEEL  
10 BALL STEEL OR 11 BALL NYLON ALLOWED

14 GAGE GALV. STEEL END HINGES ATTACHED WITH (5) SCREWS. SEE DETAIL B & C.

STRUT ON UPPER PART OF SECTION OVER HINGE LEAF. (SEE DETAIL B).

GALVANIZED STEEL STRUT. ATTACHED WITH 1/4" X 3/4" LONG HEX HEAD SELF DRILLING SCREWS. (10 PER STRUT FOR 16' WIDE DOOR)

STRUT ON UPPER PART OF SECTION OVER HINGE LEAF. (SEE DETAIL B).

POLYSTYRENE INSULATION (LAMINATED TO INTERIOR AND EXTERIOR STEEL SKIN)

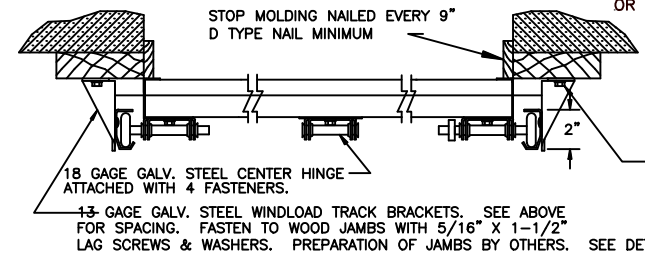
STRUT MOUNTED OVER TOP OF BOTTOM BRACKET  
13 GAGE GALV. STEEL BOTTOM BRACKET ATTACHED WITH 2 FASTENERS  
BOTTOM SCREW CAN BE ABOVE OR BELOW ROLLER.

SECTION A-A

(4) SECTIONS

21" HIGH SECTION EXTERIOR MATERIAL 27 GAGE GALV. AND PREPAINTED STEEL

OPENING HEIGHT (NOT OVER DOOR HEIGHT)



SECTION B-B

NOTE: ALL NON-DESCRIPTIVE FASTENERS SHOWN TO BE 1/4"-20 X 5/8" HEX BOLTS & NUTS OR 1/4" X 3/4" LONG HEX HEAD SHEET METAL SCREWS.

P.S.F. TABLE					
DOOR SIZE		DESIGN PRESSURE		TEST PRESSURE	
WIDTH	HEIGHT	POSITIVE	NEGATIVE	POSITIVE	NEGATIVE
16'-0"	7'-0"	+22.2	-25.0	+33.3	-37.5
16'-0"	8'-0"	+22.2	-25.0	+33.3	-37.5

DOORS SHOWN ON THIS DRAWING HAVE BEEN DEMONSTRATED TO WITHSTAND THE PRESSURES LISTED IN THE TABLE ABOVE VIA TESTING TO ANSI/DASMA 108-05/12/17.

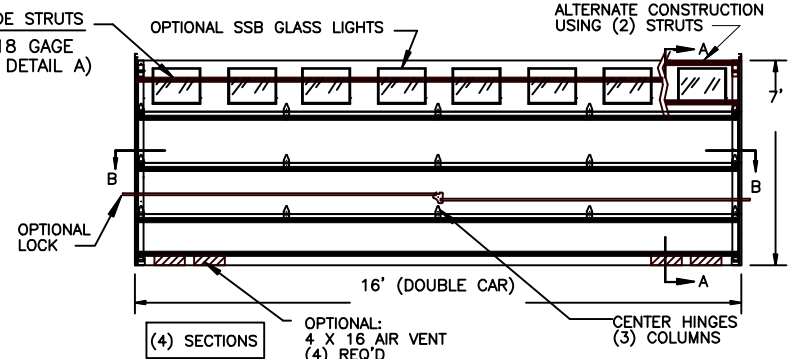
DETERMINATION OF SUITABILITY FOR SPECIFIC SITES IS THE RESPONSIBILITY OF OTHERS.

John E. Scates PE  
2560 King Arthur Blvd #124-54  
Lewisville, TX 75056  
TX-PE 56308, F-2203  
FL-PE-51737

Professional Engineer's seal provided only for verification of windload construction details.

COMPLIES WITH THE WINDLOAD REQUIREMENTS OF THE IBC/IRC 2018.

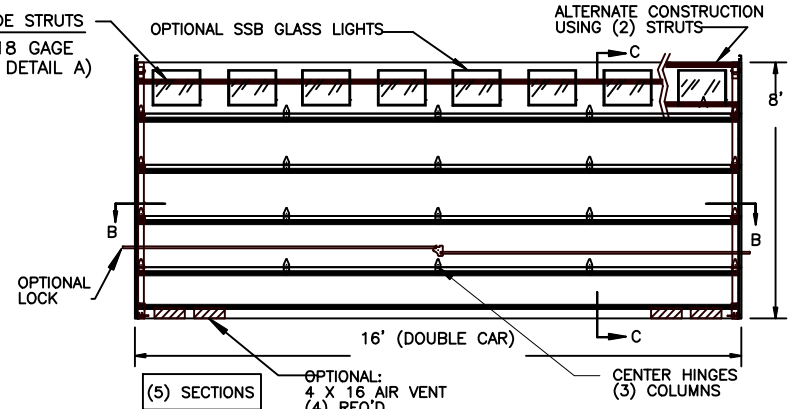
5 WIDE STRUTS  
3" 18 GAGE (SEE DETAIL A)



(4) SECTIONS

OPTIONAL: 4 X 16 AIR VENT (4) REQ'D (120 SQ. IN. MIN. TOTAL OPEN AREA)

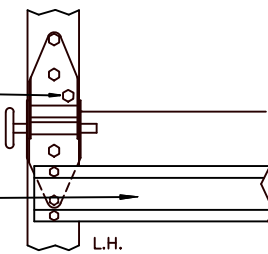
6 WIDE STRUTS  
3" 18 GAGE (SEE DETAIL A)



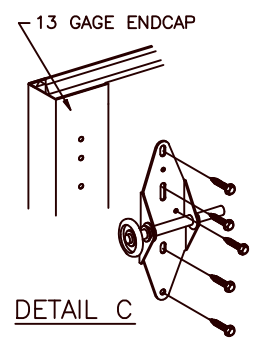
(5) SECTIONS

OPTIONAL: 4 X 16 AIR VENT (4) REQ'D (120 SQ. IN. MIN. TOTAL OPEN AREA)

USE ONE EXTRA SELF DRILLING SCREW THROUGH TOP LEAF OF HINGE, END CAP & HINGE PLATE. TYPICAL PER EACH END HINGE.



DETAIL B



DETAIL C

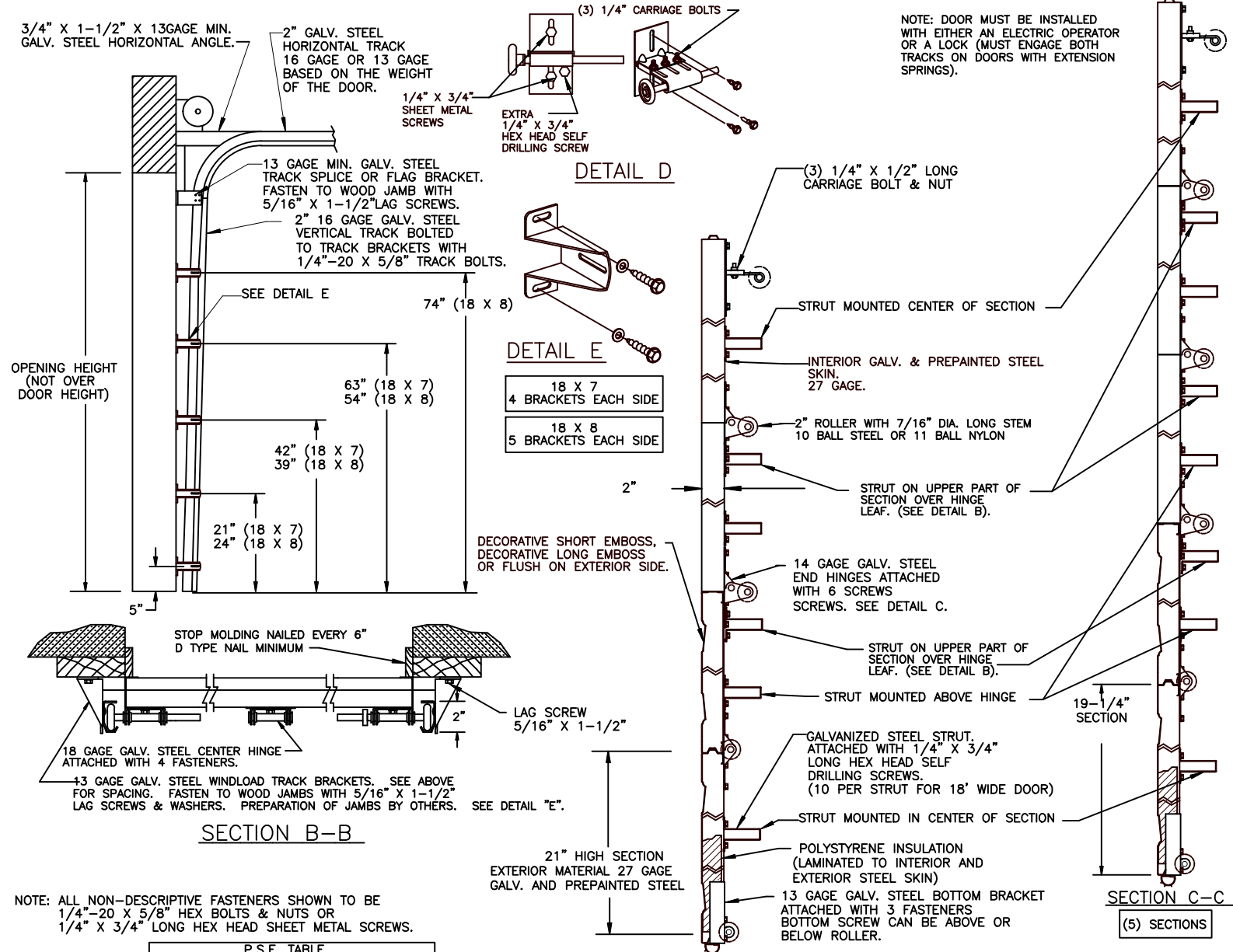
NOTE: GLAZING DOES NOT SATISFY IMPACT DEBRIS REQUIREMENTS IN FBC

FL 15078 16 X 7 16 X 8

REV.	E.C.N.	DATE:	APPROV.
D	ROLLER NOTES, PE ADDRESS	5/29/20	
C	REV LOGO & ADDRESS	1/28/13	
B		12/15/11	RLB
A	2866	3/10/08	RLB
	2851	11/1/07	RLB

**W WINDSOR DOOR**  
5800 SCOTT HAMILTON DR. LITTLE ROCK, AR 72209 (501) 562-1872

MODELS: 790		PART NAME: WINDLOAD RESIDENTIAL SANDWICH DOOR W2 B	
SCALE	PLOT SCALE	DRN. BY BH	DWG. NO. 99-B-086
FRAC. ± 1/64" DEC. ± .015 ANG. ± 1°	NEXT LEVEL	DATE: 10/11/07	SHT 3 OF 4



NOTE: DOOR MUST BE INSTALLED WITH EITHER AN ELECTRIC OPERATOR OR A LOCK (MUST ENGAGE BOTH TRACKS ON DOORS WITH EXTENSION SPRINGS).

NOTE: ALL NON-DESCRIPTIVE FASTENERS SHOWN TO BE 1/4"-20 X 5/8" HEX BOLTS & NUTS OR 1/4" X 3/4" LONG HEX HEAD SHEET METAL SCREWS.

P.S.F. TABLE					
DOOR SIZE	DESIGN PRESSURE	TEST PRESSURE		TEST PRESSURE	
		POSITIVE	NEGATIVE	POSITIVE	NEGATIVE
18'-0" X 7'-0"	+22.2	-25.0	+33.3	-37.5	
18'-0" X 8'-0"	+22.2	-25.0	+33.3	-37.5	

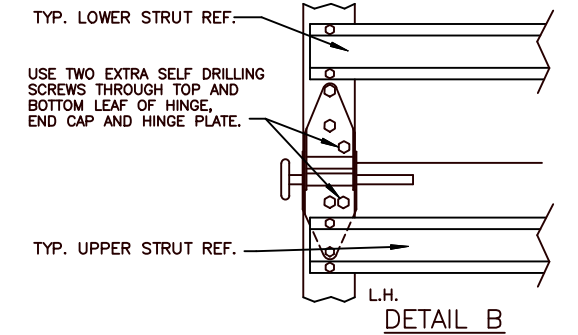
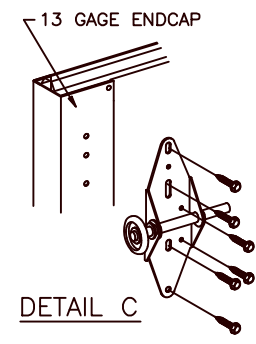
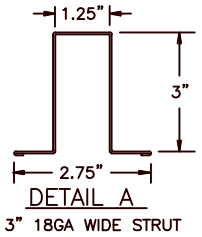
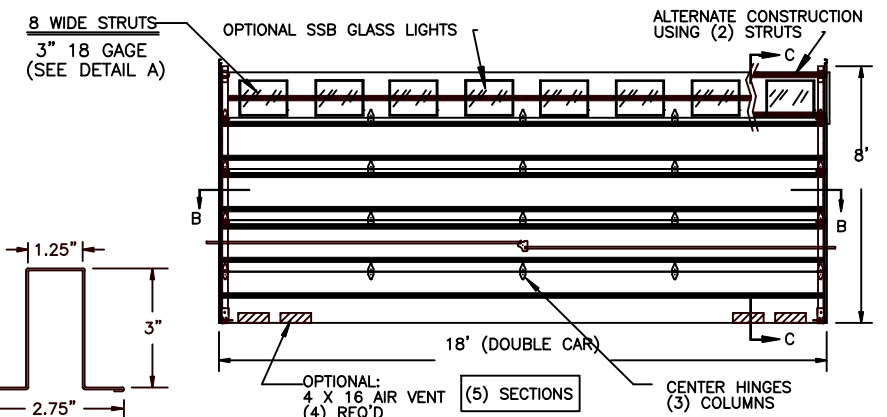
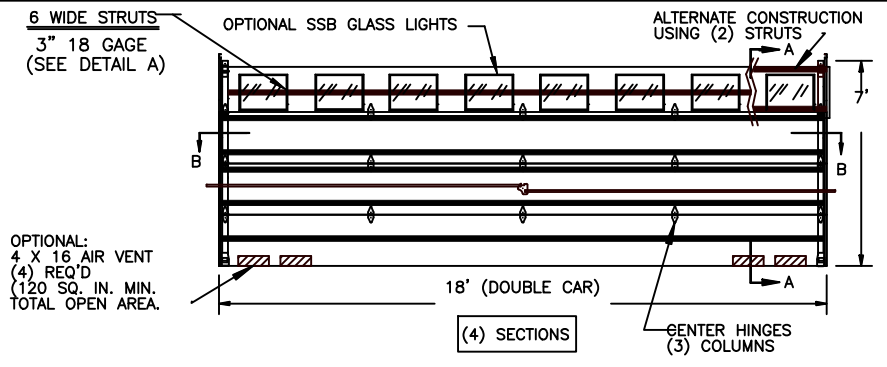
DOORS SHOWN ON THIS DRAWING HAVE BEEN DEMONSTRATED TO WITHSTAND THE PRESSURES LISTED IN THE TABLE ABOVE VIA TESTING TO ANSI/DASMA 108-05/12/17.

DETERMINATION OF SUITABILITY FOR SPECIFIC SITES IS THE RESPONSIBILITY OF OTHERS.

John E. Scates PE  
2560 King Arthur Blvd #124-54  
Lewisville, TX 75056  
TX-PE 56308, F-2203  
FL-PE-51737

Professional Engineer's seal provided only for verification of windload construction details.

COMPLIES WITH THE WINDLOAD REQUIREMENTS OF THE IBC/IRC 2018.



FL 15078 18' X 7' 18' X 8'

NOTE: GLAZING DOES NOT SATISFY IMPACT DEBRIS REQUIREMENTS IN FBC

REV.	E.C.N.	DATE:	APPROV.
D	ROLLER NOTES, PE ADDRESS	5/29/20	
C	REV LOGO & ADDRESS	1/28/13	
B		12/15/11	RLB
A	2866	3/10/08	RLB
	2851	11/1/07	RLB

**W WINDSOR DOOR**

5800 SCOTT HAMILTON DR. LITTLE ROCK, AR 72209 (501) 562-1872

MODELS: 790

PART NAME: WINDLOAD RESIDENTIAL SANDWICH DOOR W2 B

TOLERANCE: FRAC. ± 1/64" DEC. ± .015 ANG. ± 1'

SCALE: PLOT SCALE

DATE: 11/1/07

DRN. BY: BH

DWG. NO. 99-B-086

SHT 4 OF 4