

3/4" X 1-1/2" X 13GAGE MIN. GALV. STEEL HORIZONTAL ANGLE.

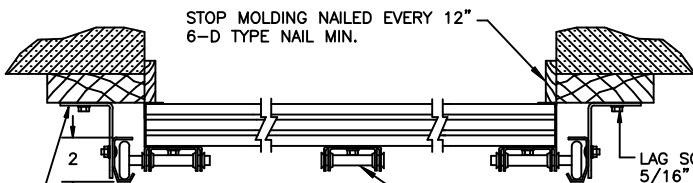
2" GALV. STEEL HORIZONTAL TRACK 16 GAGE OR 13 GAGE BASED ON THE WEIGHT OF THE DOOR.

USE (2) 1/4" X 3/4" SHEET METAL SCREWS.

13 GAGE MIN. GALV. STEEL TRACK SPLICE OR FLAG BRACKET. FASTEN TO WOOD JAMB WITH 5/16" X 1-1/2" LAG SCREWS.

2" 18 GAGE GALV. STEEL VERTICAL TRACK BOLTED TO TRACK BRACKETS WITH 1/4"-20 X 5/8" TRACK BOLTS.

OPENING HEIGHT (NOT OVER DOOR HEIGHT)



10 GAGE GALV. STEEL TRACK BRACKETS. SEE ABOVE FOR SPACING. FASTEN TO WOOD JAMBS WITH 5/16" X 1 1/2" LAG SCREWS. PREPARATION OF JAMBS BY OTHER.

SECTION B-B

P.S.F. TABLE					
DOOR SIZE		DESIGN PRESSURE		TEST PRESSURE	
WIDTH	HEIGHT	POSITIVE	NEGATIVE	POSITIVE	NEGATIVE
9'-0"	7'-0"	+19.8	-22.2	+29.7	-33.3
9'-0"	8'-0"	+19.8	-22.2	+29.7	-33.3

NOTE: ALL NON-DESCRIPTIVE FASTENERS SHOWN TO BE 1/4"-20 X 5/8" HEX BOLTS & NUTS OR 1/4" X 3/4" LONG HEX HEAD SHEET METAL SCREWS.

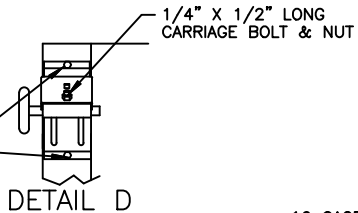
DOORS SHOWN ON THIS DRAWING HAVE BEEN DEMONSTRATED TO WITHSTAND THE PRESSURES LISTED IN THE TABLE ABOVE VIA TESTING TO ANSI/DASMA 108-05/112/17.

DETERMINATION OF SUITABILITY FOR SPECIFIC SITES IS THE RESPONSIBILITY OF OTHERS.

John E. Scates PE
2560 King Arthur Blvd #124-54
Lewisville, TX 75056
TX-PE 56308, F-2203
FL-PE-51737

Professional Engineer's seal provided only for verification of windload construction details.

COMPLIES WITH THE WINDLOAD REQUIREMENTS OF THE IBC/IRC 2018.



DETAIL D

16 GAGE GALV. STEEL TOP BRACKET WITH 14 GAGE ROLLER HOLDER SEE DETAIL D.

STRUT MOUNTED BELOW TOP ROLLER CARRIER

INTERIOR GALV. & PREPAINTED STEEL SKIN, 27" GAGE.

2" ROLLER WITH 7/16" DIA. SHORT STEM 7 BALL STEEL 10 BALL STEEL OR 11 BALL NYLON ALLOWED

1/4" X 3/4" LONG HEX HEAD SELF DRILLING SCREWS.

STRUT MOUNTED IN CENTER OF SECTION

GALVANIZED STEEL STRUT, ATTACHED WITH 1/4" X 3/4" LONG HEX HEAD SELF DRILLING SCREWS. (6 PER STRUT FOR 9' WIDE DOOR)

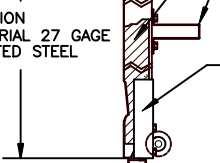
STRUT MOUNTED BELOW #2 HINGE

14 GAGE GALV. STEEL END HINGES ATTACHED WITH (4) SCREWS SEE DETAIL C.

POLYSTYRENE INSULATION (LAMINATED TO INTERIOR AND EXTERIOR STEEL SKIN)

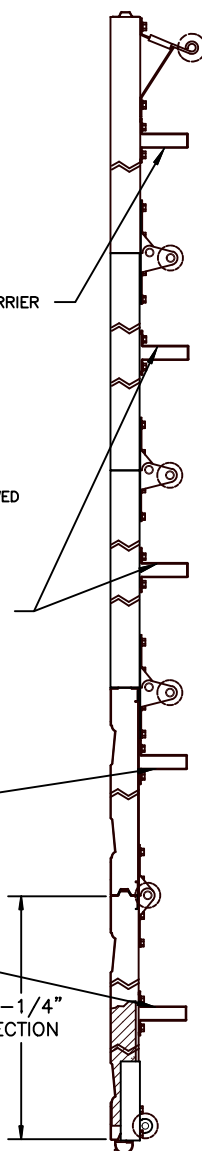
STRUT MOUNTED IN CENTER OF SECTION

13 GAGE GALV. STEEL BOTTOM BRACKET ATTACHED WITH 2 FASTENERS BOTTOM SCREW CAN BE ABOVE OR BELOW ROLLER.



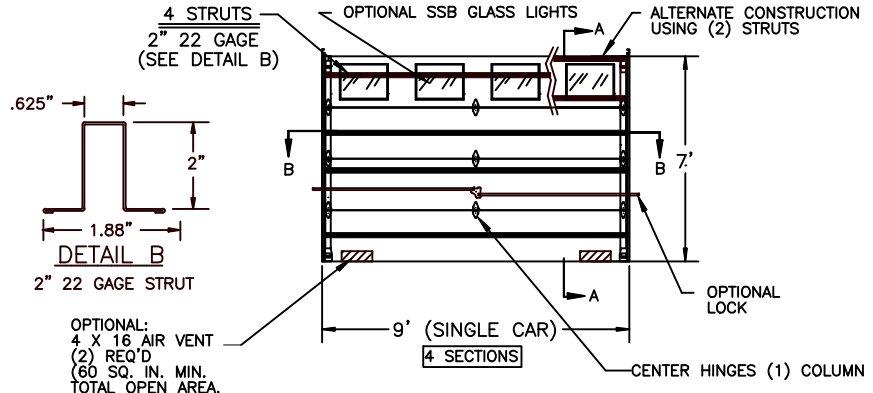
SECTION A-A

4 SECTIONS



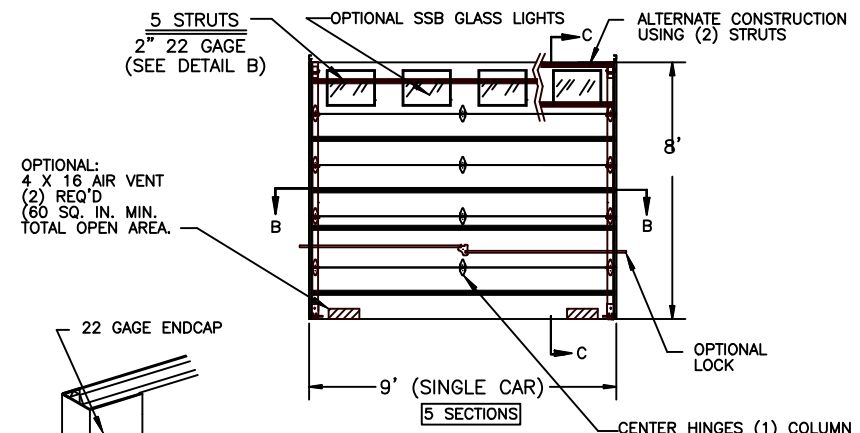
SECTION C-C

5 SECTIONS

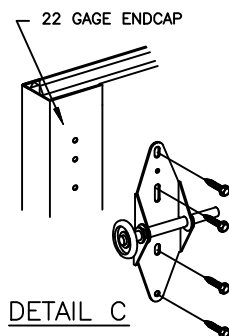


DETAIL B

OPTIONAL: 4 X 16 AIR VENT (2) REQ'D (60 SQ. IN. MIN. TOTAL OPEN AREA.)



OPTIONAL: 4 X 16 AIR VENT (2) REQ'D (60 SQ. IN. MIN. TOTAL OPEN AREA.)



DETAIL C

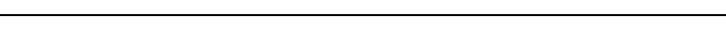
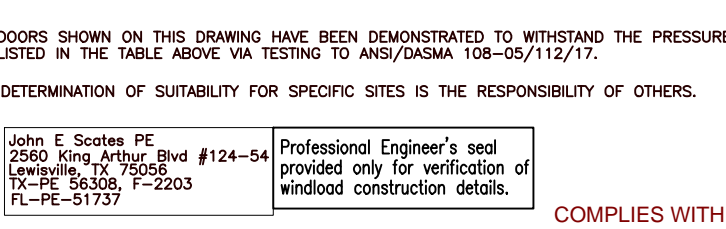
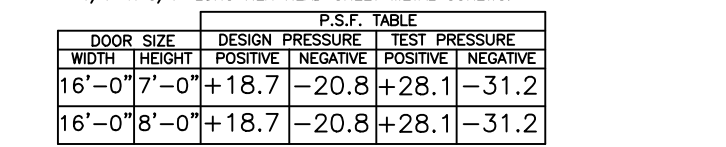
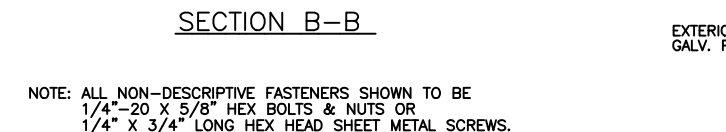
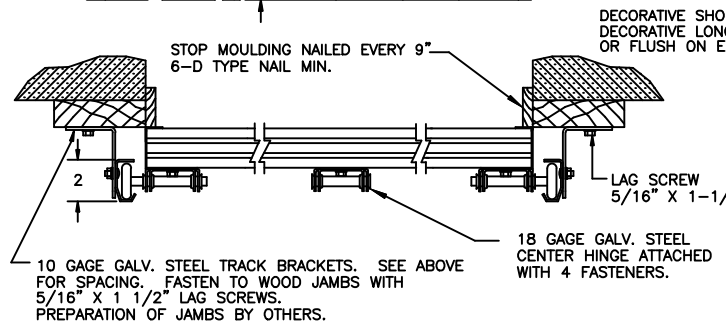
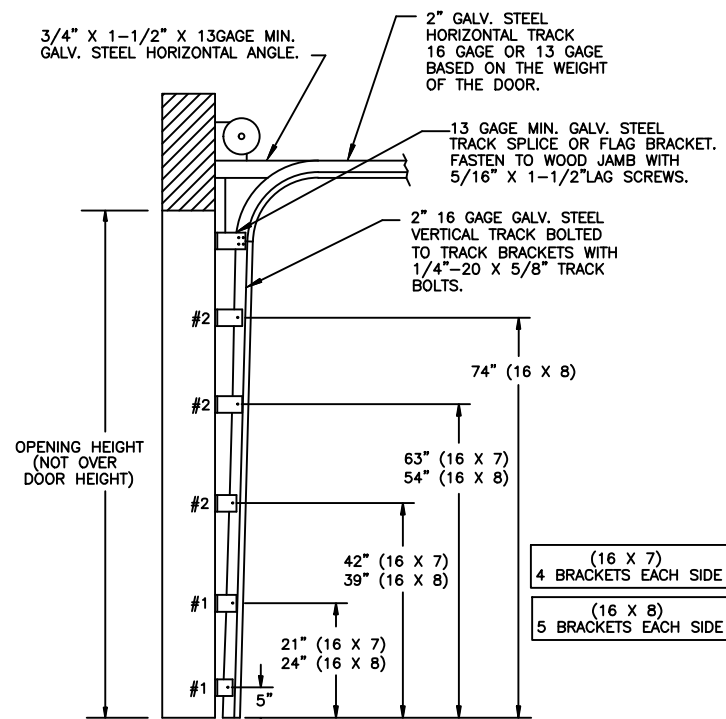
NOTE: GLAZING DOES NOT SATISFY IMPACT DEBRIS REQUIREMENTS IN FBC

FL 15078
9 X 7 9 X 8

D	ROLLER NOTES, PE ADDRESS	5/29/20
C	REV LOGO & ADDRESS	1/28/13
B		12/15/11 RLB
A	2866	3/10/08 RLB
	2851	11/1/07 RLB
REV.	E.C.N.	DATE: APPROV.

W WINDSOR DOOR
5800 SCOTT HAMILTON DR. LITTLE ROCK, AR 72209 (501) 562-1872

MODELS: 790	
DWG. WAS	PART NAME: WINDLOAD RESIDENTIAL SANDWICH DOOR W1 B
TOLERANCE	NEXT LEVEL
FRAC. ± 1/64 DEC. ± .015 ANG. ± 1'	DATE: 11/1/07
SCALE NONE	DRN. BY BH
PLOT SCALE	DWG. NO. 99-B-085
	1 of 3



NOTE: ALL NON-DESCRIPTIVE FASTENERS SHOWN TO BE 1/4" x 20 x 5/8" HEX BOLTS & NUTS OR 1/4" x 3/4" LONG HEX HEAD SHEET METAL SCREWS.

P.S.F. TABLE					
DOOR SIZE		DESIGN PRESSURE		TEST PRESSURE	
WIDTH	HEIGHT	POSITIVE	NEGATIVE	POSITIVE	NEGATIVE
16'-0"	7'-0"	+18.7	-20.8	+28.1	-31.2
16'-0"	8'-0"	+18.7	-20.8	+28.1	-31.2

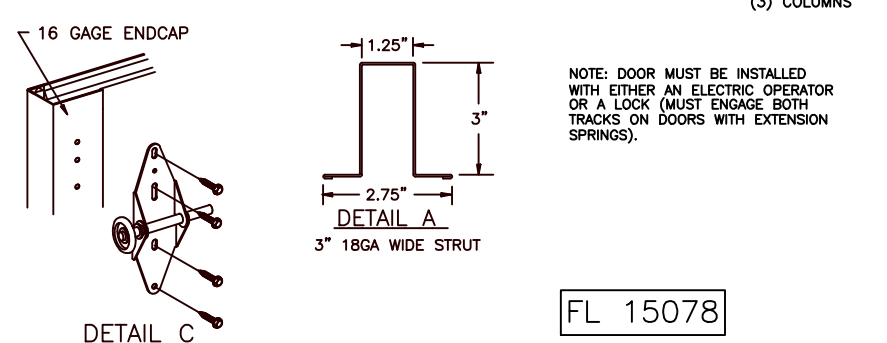
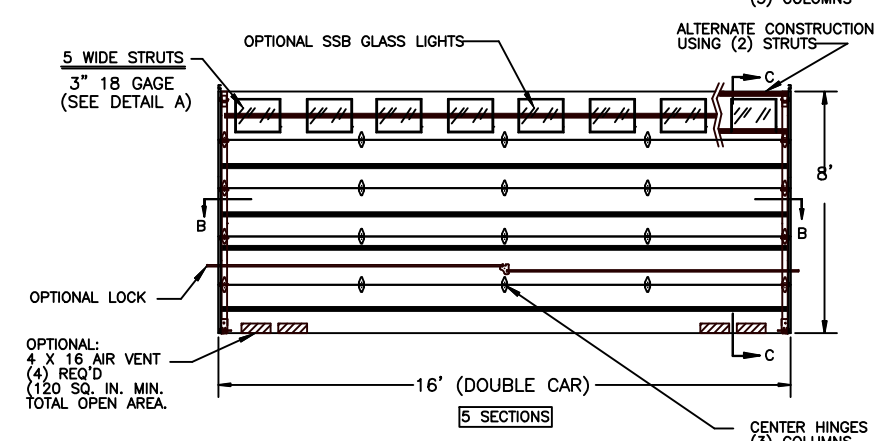
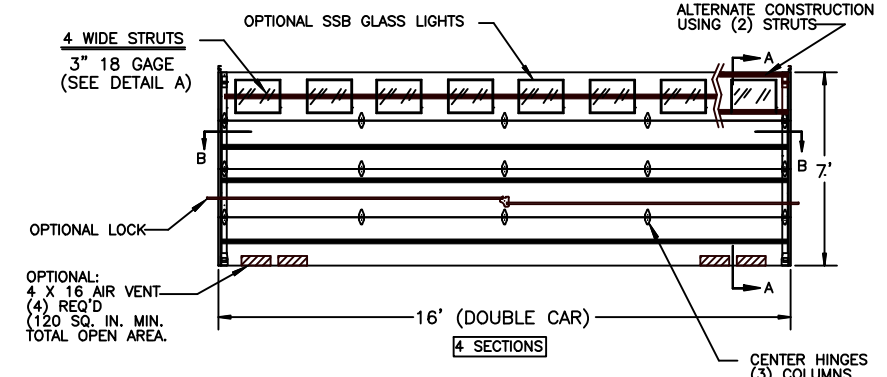
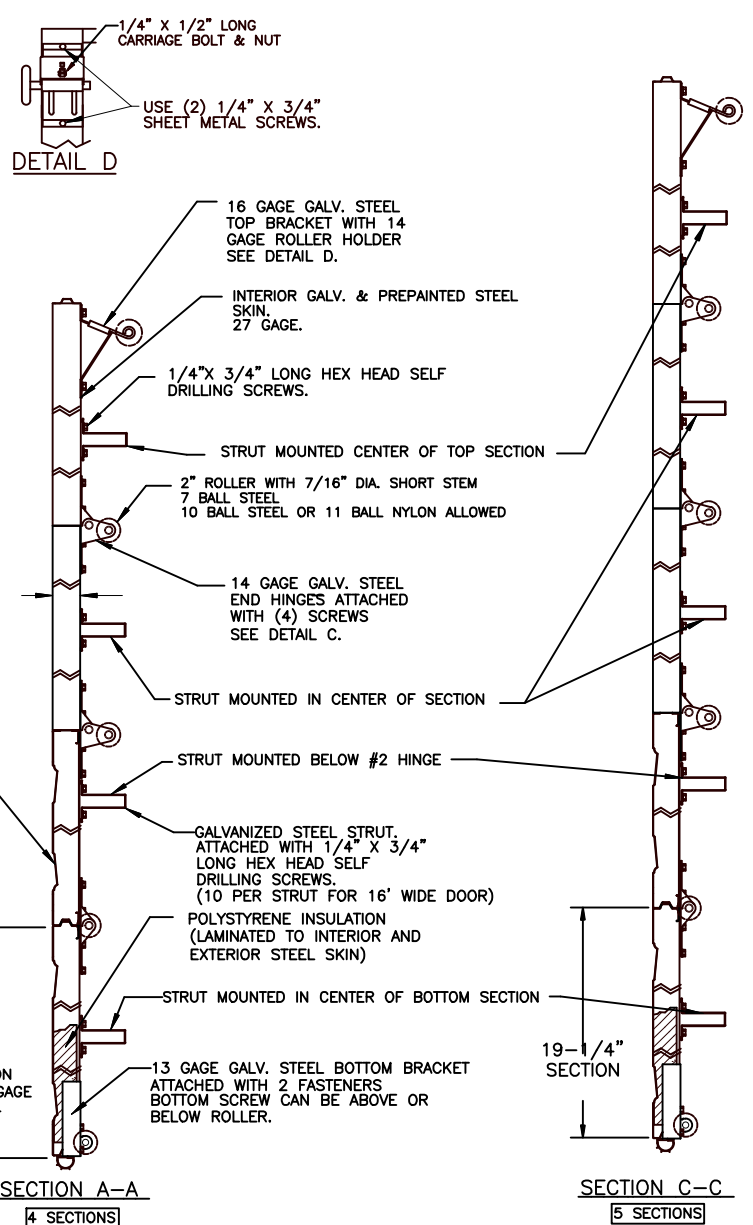
DOORS SHOWN ON THIS DRAWING HAVE BEEN DEMONSTRATED TO WITHSTAND THE PRESSURES LISTED IN THE TABLE ABOVE VIA TESTING TO ANSI/DASMA 108-05/112/17.

DETERMINATION OF SUITABILITY FOR SPECIFIC SITES IS THE RESPONSIBILITY OF OTHERS.

John E. Scates PE
2560 King Arthur Blvd #124-54
Lewisville, TX 75056
TX-PE 56308, F-2203
FL-PE-51737

Professional Engineer's seal provided only for verification of windload construction details.

COMPLIES WITH THE WINDLOAD REQUIREMENTS OF THE IBC/IRC 2018.



NOTE: DOOR MUST BE INSTALLED WITH EITHER AN ELECTRIC OPERATOR OR A LOCK (MUST ENGAGE BOTH TRACKS ON DOORS WITH EXTENSION SPRINGS).

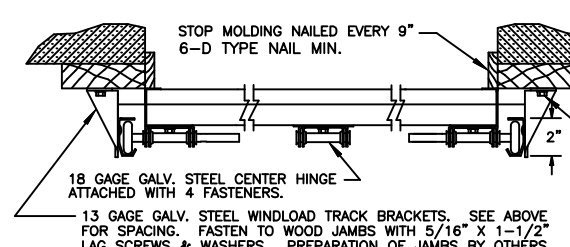
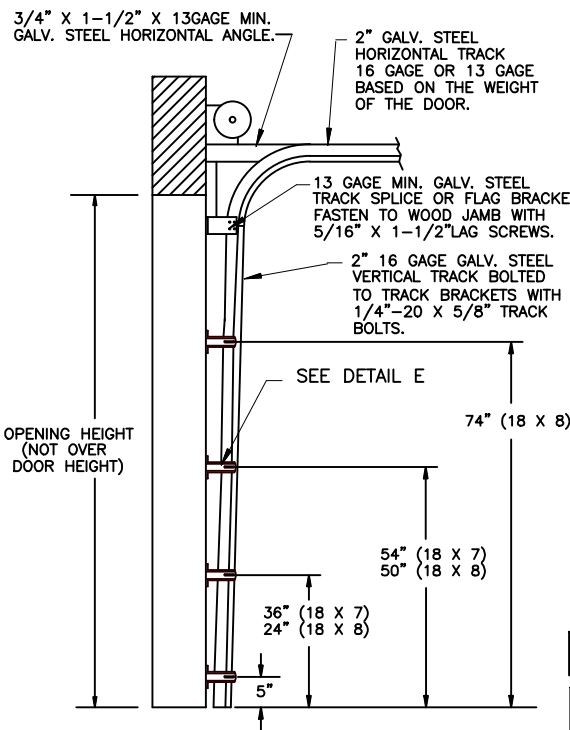
NOTE: GLAZING DOES NOT SATISFY IMPACT DEBRIS REQUIREMENTS IN FBC

REV.		E.C.N.	DATE:	APPROV.	SCALE	PLOT SCALE	DRN. BY	DWG. NO.
					NONE		BH	99-B-085
								2 of 3

W WINDSOR DOOR

5800 SCOTT HAMILTON DR.
LITTLE ROCK, AR
72209
(501) 562-1872

MODELS:		790	
D	ROLLER NOTES, PE ADDRESS	5/29/20	DWG. WAS
C	REV LOGO & ADDRESS	1/28/13	PART NAME:
B		12/15/11	WINDLOAD RESIDENTIAL SANDWICH DOOR
A	2866	3/10/08	W1 B
	2851	11/1/07	
REV.	E.C.N.	DATE:	APPROV.



SECTION B-B

NOTE: ALL NON-DESCRIPTIVE FASTENERS SHOWN TO BE 1/4"-20 X 5/8" HEX BOLTS & NUTS OR 1/4" X 3/4" LONG HEX HEAD SHEET METAL SCREWS.

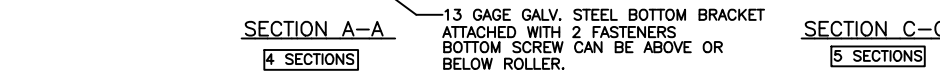
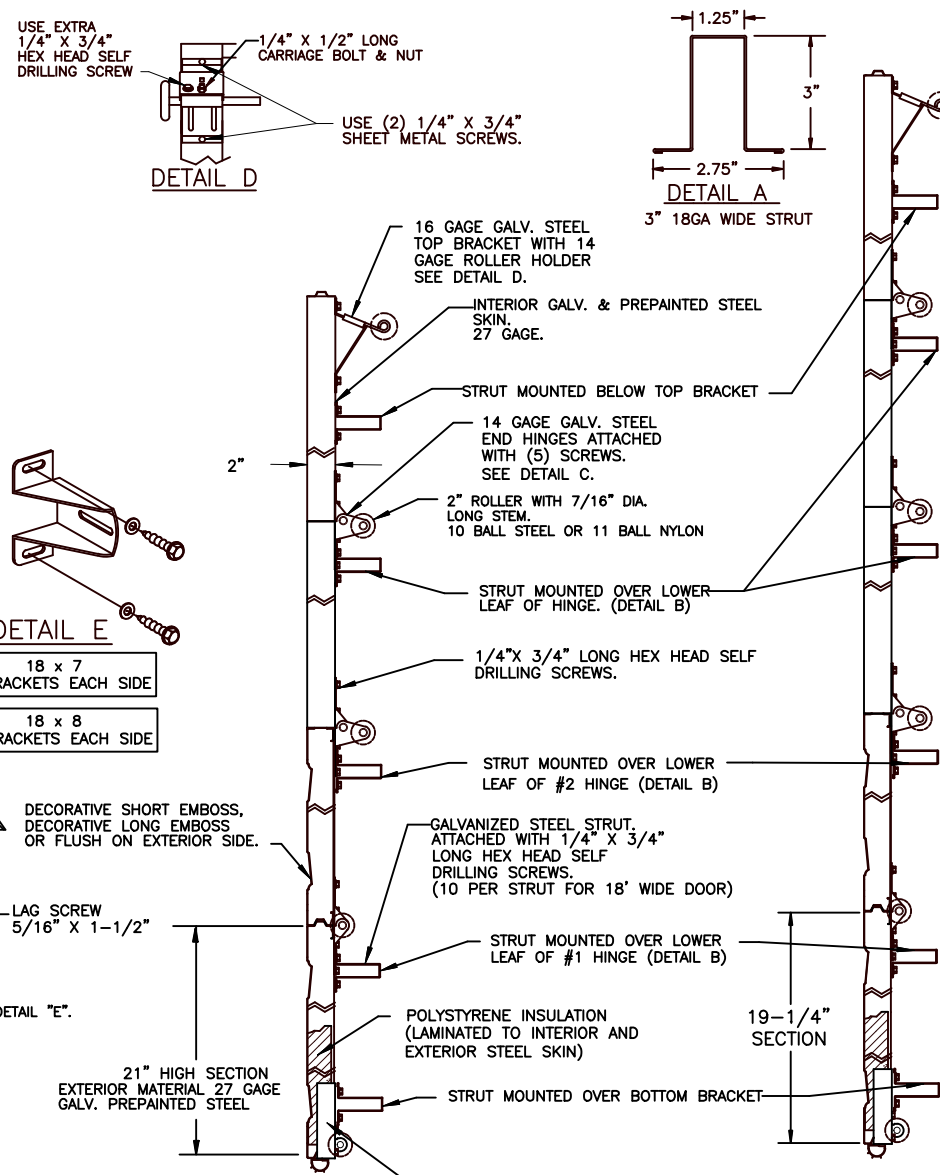
DOOR SIZE	P.S.F. TABLE			
	DESIGN PRESSURE	TEST PRESSURE	DESIGN PRESSURE	TEST PRESSURE
WIDTH HEIGHT	POSITIVE	NEGATIVE	POSITIVE	NEGATIVE
18'-0" 7'-0"	+18.7	-20.8	+28.1	-31.2
18'-0" 8'-0"	+18.7	-20.8	+28.1	-31.2

DOORS SHOWN ON THIS DRAWING HAVE BEEN DEMONSTRATED TO WITHSTAND THE PRESSURES LISTED IN THE TABLE ABOVE VIA TESTING TO ANSI/DASMA 108-05/112/17.

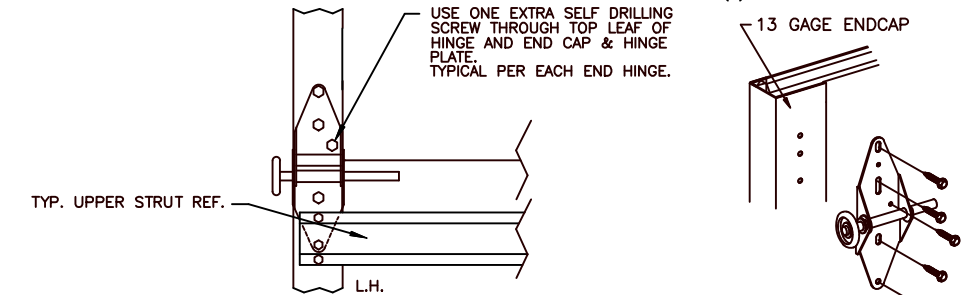
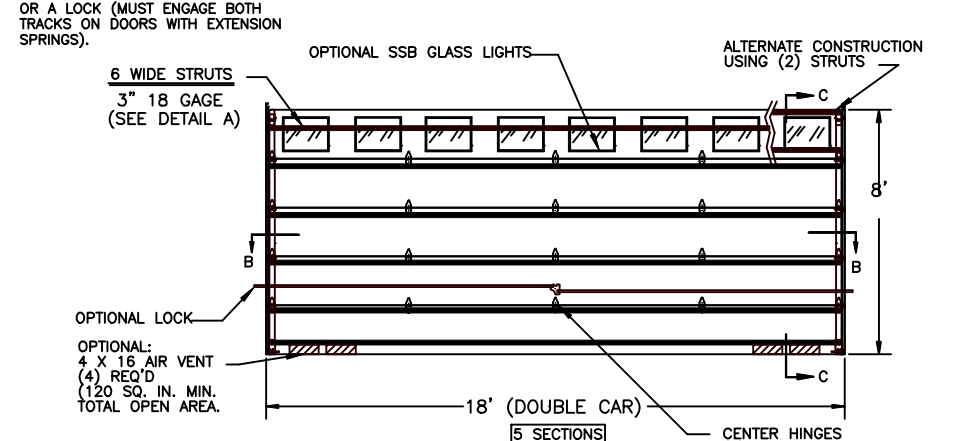
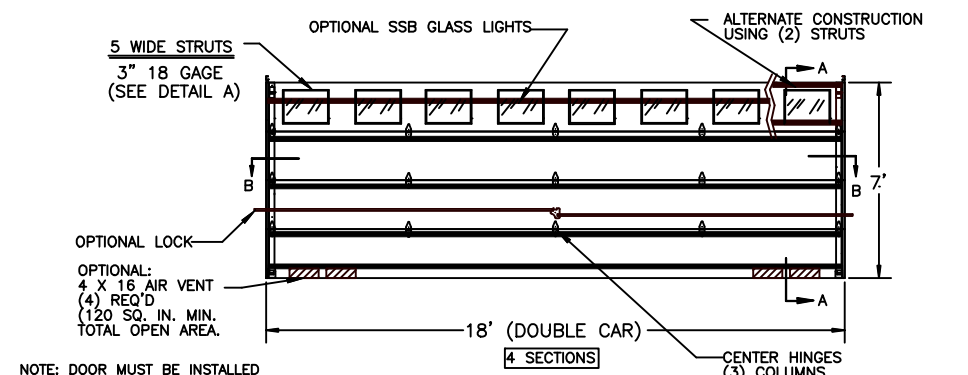
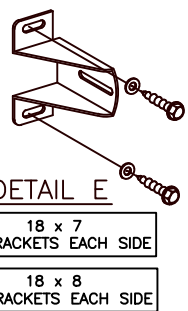
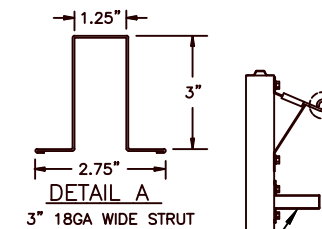
DETERMINATION OF SUITABILITY FOR SPECIFIC SITES IS THE RESPONSIBILITY OF OTHERS.

John E. Scates PE
2560 King Arthur Blvd #124-54
Lewisville, TX 75056
TX-PE 56308, F-2203
FL-PE-51737

Professional Engineer's seal provided only for verification of windload construction details.



COMPLIES WITH THE WINDLOAD REQUIREMENTS OF THE IBC/IRC 2018.



NOTE: GLAZING DOES NOT SATISFY IMPACT DEBRIS REQUIREMENTS IN FBC

FL 15078
18 X 7 18 X 8
DETAIL C

W WINDSOR DOOR		5800 SCOTT HAMILTON DR. LITTLE ROCK, AR 72209 (501) 562-1872	
MODELS: 790		DWG. WAS PART NAME: WINDLOAD RESIDENTIAL SANDWICH DOOR W1 B	
D ROLLER NOTES, PE ADDRESS 5/29/20	C REV LOGO & ADDRESS 1/28/13	TOLERANCE	
B 12/15/11 RLB	A 2866 3/10/08 RLB	FRAC. ± 1/84" DEC. ± .015 ANG. ± 1'	NEXT LEVEL DATE: 11/1/07 DWG. NO. 99-B-085
REV. E.C.N. DATE: APPROV.	SCALE NONE	PLOT SCALE DRN. BY BH	3 of 3