

SECTION B-B

DOOR SIZE		P.S.F. TABLE			
WIDTH	HEIGHT	DESIGN PRESSURE POSITIVE	DESIGN PRESSURE NEGATIVE	TEST PRESSURE POSITIVE	TEST PRESSURE NEGATIVE
9'-0"	7'-0"	+31.2	-35.8	+46.8	-53.7
9'-0"	8'-0"	+31.2	-35.4	+46.8	-53.1

NOTE: UNLESS SPECIFIED OTHERWISE, ALL FASTENERS ARE 1/4"-14 X 3/4" HEX HEAD SHEET METAL SCREWS OR 1/4"-20 X 5/8" HEX BOLTS AND NUTS.

John E. Scates PE
2560 King Arthur Blvd #124-54
Lewisville, TX 75056
TX-PE 56308, F-2203
FL-PE-51737

Professional Engineer's seal provided only for verification of windload construction details.

COMPLIES WITH THE WINDLOAD REQUIREMENTS OF THE IBC/IRC 2018.

NOTE: GLAZING DOES NOT SATISFY IMPACT DEBRIS REQUIREMENTS IN FBC

REV.	E.C.N.	DATE	APPROV.	SCALE	NONE
E	ROLLER NOTES, PE ADDRESS	5/27/20			
D	REV LOGO & ADDRESS	1/28/13			
C		12/15/11	RLB		
B	2866	3-10-08	RLB		
A	2848	11-1-07	RLB		
	2810	3-8-07	RLB		

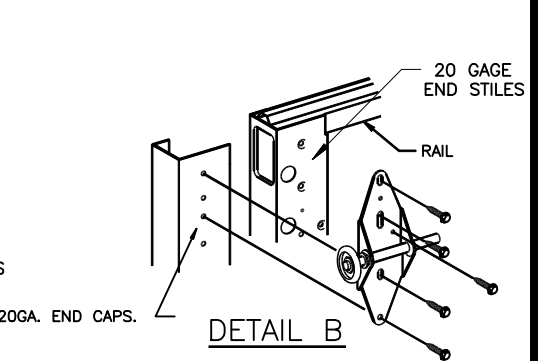
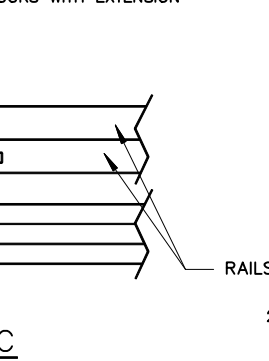
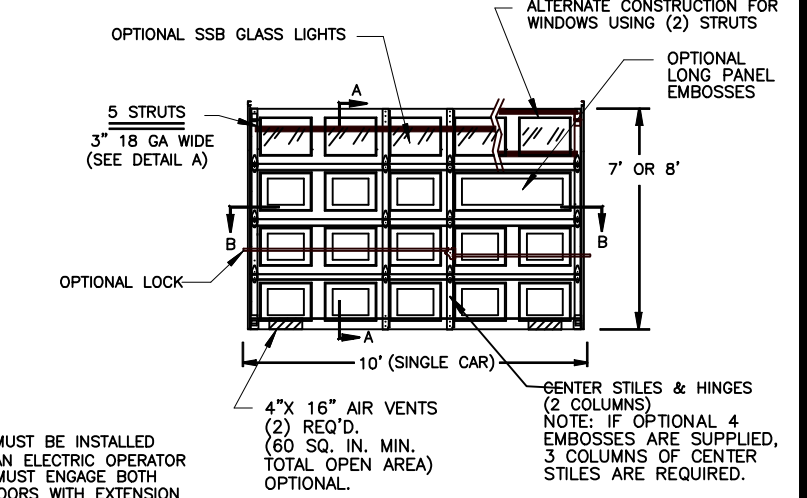
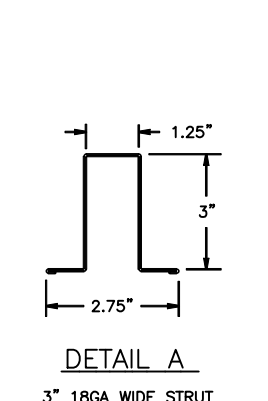
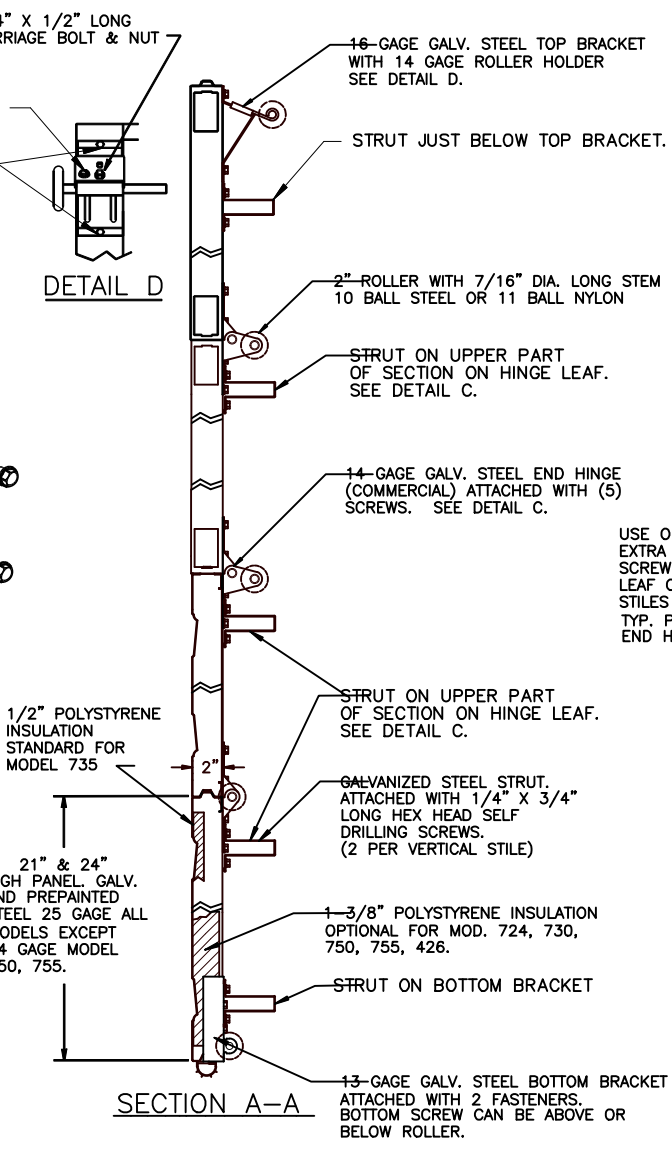
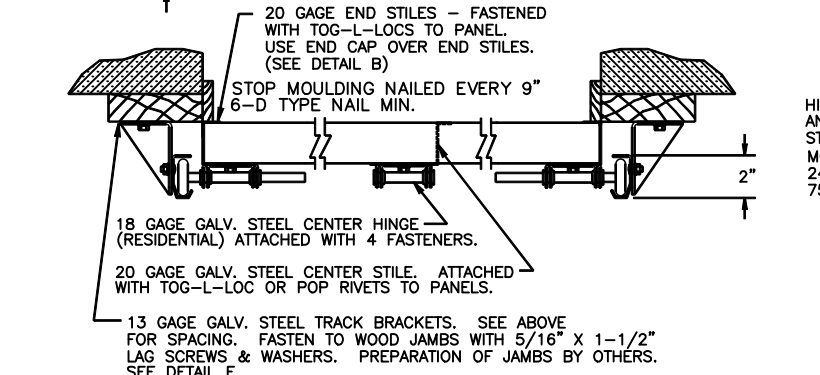
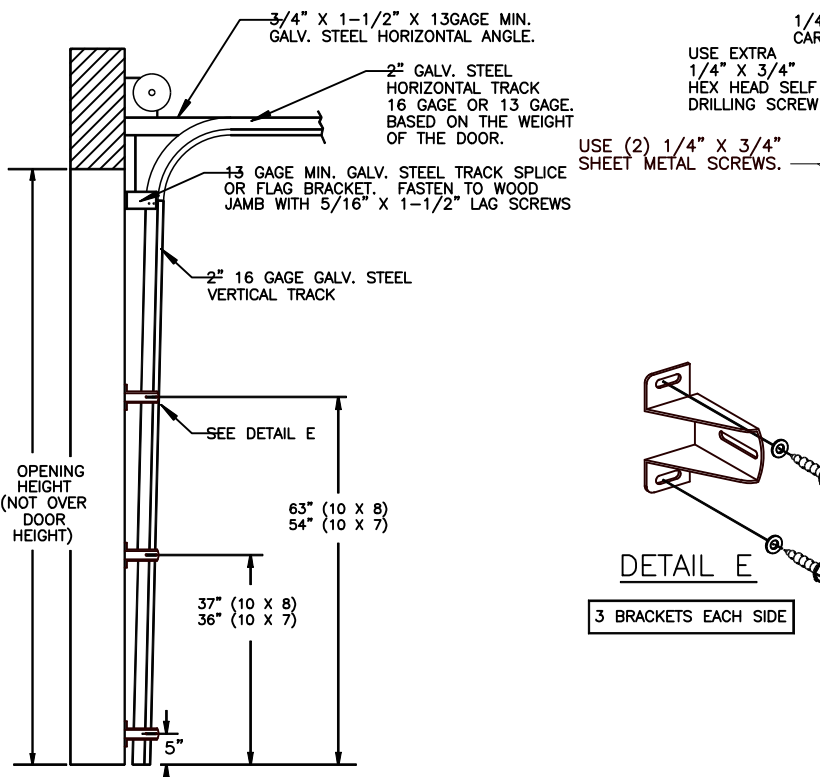
W WINDSOR DOOR

5800 SCOTT HAMILTON DR. LITTLE ROCK, AR 72209 (501) 562-1872

MODELS: 724, 426, 730, 735, 750, 755

PART NAME: WINDLOAD RESIDENTIAL PAN DOORS W2 C & W4 B

FRAC. ± 1/64"	DEC. ± .015	ANG. ± 1°	NEXT LEVEL	DATE: 2/27/07	DWG. NO. 99-B-082
			PLOT SCALE	DRN. BY BH	SHEET 1 OF 6



P.S.F. TABLE

DOOR SIZE	DESIGN PRESSURE	TEST PRESSURE			
		POSITIVE	NEGATIVE	POSITIVE	NEGATIVE
10'-0" x 7'-0"	+31.2	-35.4	+46.8	-53.1	
10'-0" x 8'-0"	+31.2	-35.4	+46.8	-53.1	

NOTE: ALL NON-DESCRIPTIVE FASTENERS SHOWN TO BE 1/4"-20 X 5/8" HEX BOLTS & NUTS OR 1/4" X 3/4" LONG HEX HEAD SHEET METAL SCREWS.

DOORS SHOWN ON THIS DRAWING HAVE BEEN DEMONSTRATED TO WITHSTAND THE PRESSURES LISTED IN THE TABLE ABOVE VIA TESTING TO ANSI/DASMA 108-05/12/17.

DETERMINATION OF SUITABILITY FOR SPECIFIC SITES IS THE RESPONSIBILITY OF OTHERS.

John E. Scates PE
2560 King Arthur Blvd #124-54
Lewisville, TX 75056
TX-PE 56308, F-2203
FL-PE-51737

Professional Engineer's seal provided only for verification of windload construction details.

COMPLIES WITH THE WINDLOAD REQUIREMENTS OF THE IBC/IRC 2018.

NOTE: GLAZING DOES NOT SATISFY IMPACT DEBRIS REQUIREMENTS IN FBC

FL 15080

10 X 7

10 X 8

REV.	E.C.N.	DATE	APPROV.
E	ROLLER NOTES, PE ADDRESS	5/27/20	
D	REV LOGO & ADDRESS	1/28/13	
C		12/15/11	RLB
B	2866	3-10-08	RLB
A	2848	11-1-07	RLB
		2810	3-8-07

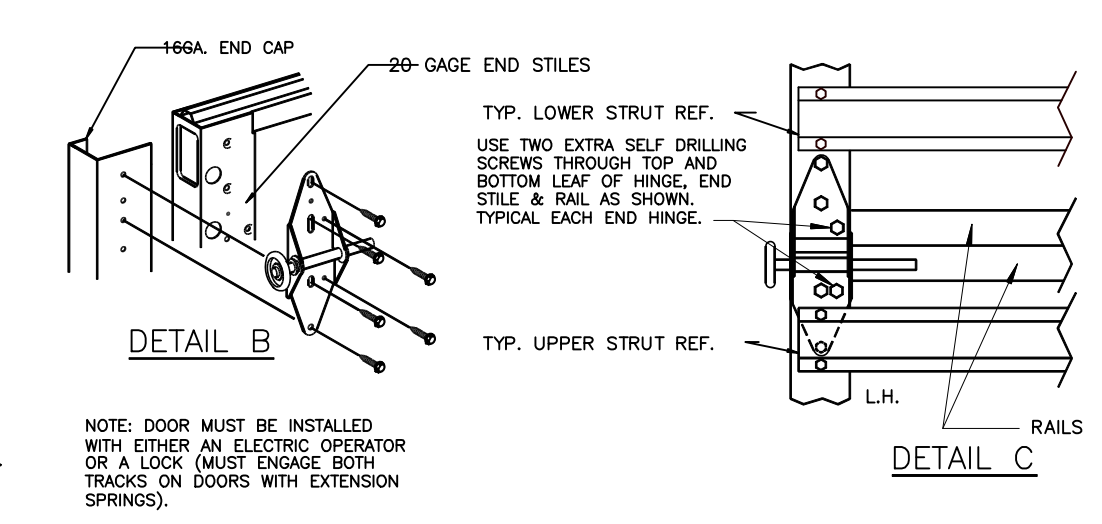
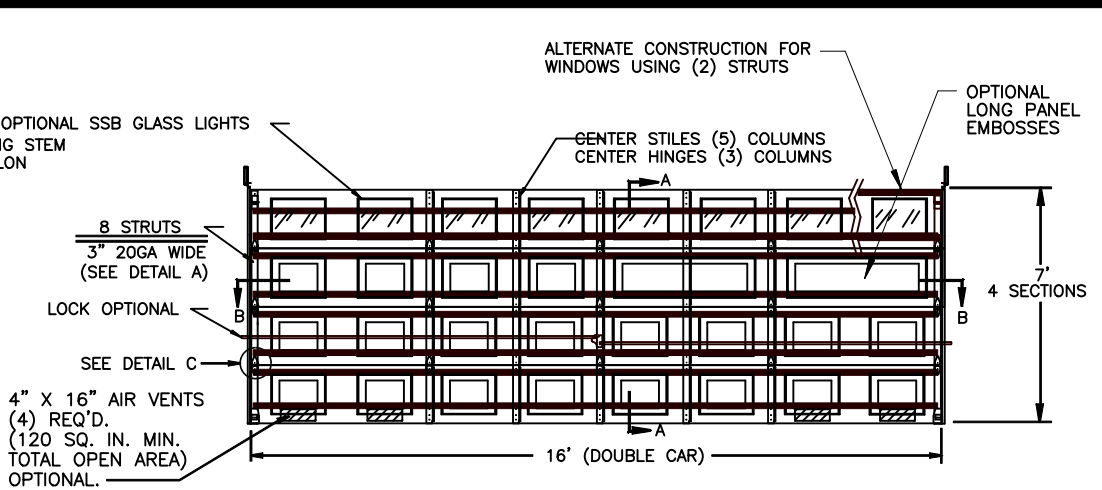
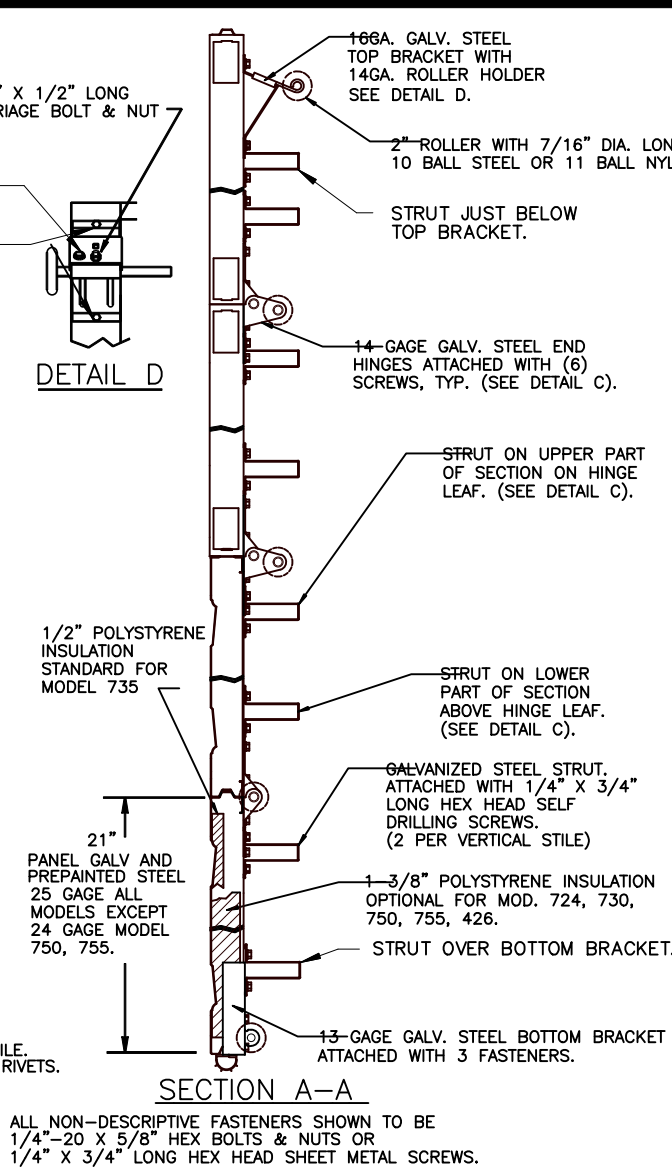
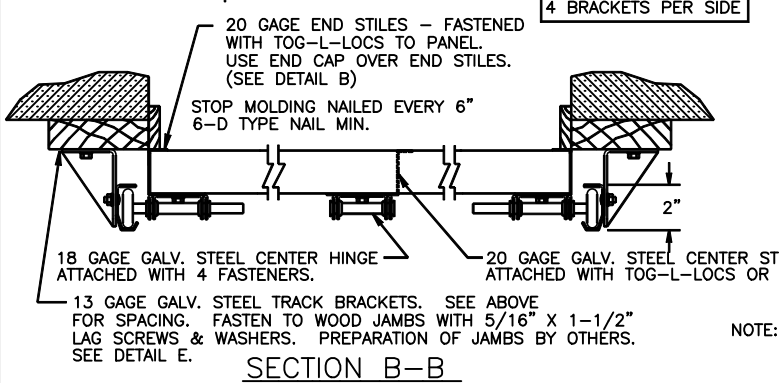
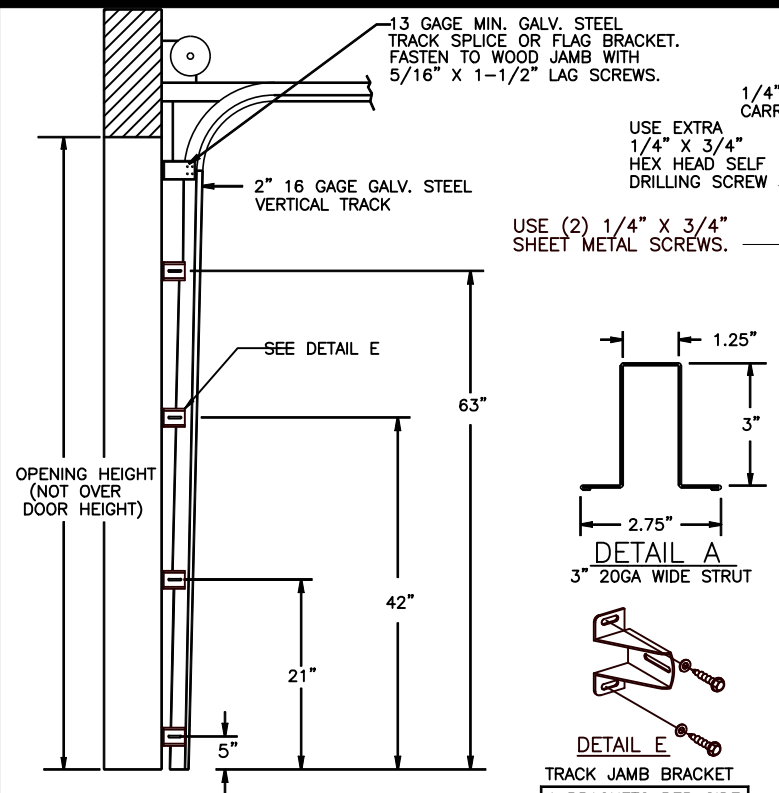
WINDSOR DOOR

5800 SCOTT HAMILTON DR.
LITTLE ROCK, AR 72209
(501) 562-1872

MODELS:
724, 426, 730, 735, 750, 755

PART NAME:
WINDLOAD RESIDENTIAL PAN DOORS
W2 C & W4 B

SCALE NONE	PLOT SCALE	DATE: 2/27/07	DWG. NO. 99-B-082
		DRN. BY BH	SHEET 2 OF 6



NOTE: DOOR MUST BE INSTALLED WITH EITHER AN ELECTRIC OPERATOR OR A LOCK (MUST ENGAGE BOTH TRACKS ON DOORS WITH EXTENSION SPRINGS).

NOTE: GLAZING DOES NOT SATISFY IMPACT DEBRIS REQUIREMENTS IN FBC

FL 15080

16 X 7

NOTE: ALL NON-DESCRIPTIVE FASTENERS SHOWN TO BE 1/4"-20 X 5/8" HEX BOLTS & NUTS OR 1/4" X 3/4" LONG HEX HEAD SHEET METAL SCREWS.

P.S.F. TABLE					
DOOR SIZE		DESIGN PRESSURE		TEST PRESSURE	
WIDTH	HEIGHT	POSITIVE	NEGATIVE	POSITIVE	NEGATIVE
16'-0"	7'-0"	+31.2	-34.0	+46.8	-51.0

DOORS SHOWN ON THIS DRAWING HAVE BEEN DEMONSTRATED TO WITHSTAND THE PRESSURES LISTED IN THE TABLE ABOVE VIA TESTING TO ANSI/DASMA 108-05/12/17.

DETERMINATION OF SUITABILITY FOR SPECIFIC SITES IS THE RESPONSIBILITY OF OTHERS.

John E. Scates PE
2560 King Arthur Blvd #124-54
Lewisville, TX 75056
TX-PE 56308, F-2203
FL-PE-51737

Professional Engineer's seal provided only for verification of windload construction details.

COMPLIES WITH THE WINDLOAD REQUIREMENTS OF THE IBC/IRC 2018.

E	ROLLER NOTES, PE ADDRESS	5/27/20
D	REV LOGO & ADDRESS	1/28/13
C		12/15/11 RLB
B	2866	3-10-08 RLB
A	2848	11-1-07 RLB
	2810	3-8-07 RLB
REV.	E.C.N.	DATE
		APPROV.

W WINDSOR DOOR

5800 SCOTT HAMILTON DR. LITTLE ROCK, AR 72209 (501) 562-1872

MODELS: 724, 426, 730, 735, 750, 755

PART NAME: WINDLOAD RESIDENTIAL PAN DOORS W2 C & W4 B

TOLERANCE: FRAC. ± 1/64" DEC. ± .015 ANG. ± 1'

SCALE: NONE

PLOT SCALE: NEXT LEVEL

DATE: 2/27/07

DRN. BY: BH

DWG. NO. 99-B-082

SHEET 3 OF 6

3/4" X 1-1/2" X 13GAGE MIN. GALV. STEEL HORIZONTAL ANGLE.

2" GALV. STEEL HORIZONTAL TRACK 16 GAGE OR 13 GAGE BASED ON THE WEIGHT OF THE DOOR.

1/4" X 3/4" SHEET METAL SCREWS

13 GAGE MIN. GALV. STEEL TRACK SPLICE OR FLAG BRACKET. FASTEN TO WOOD JAMB WITH 5/16" X 1-1/2" LAG SCREWS.
2" 13 GAGE GALV. STEEL VERTICAL TRACK BOLTED TO TRACK BRACKETS WITH 1/4"-20 X 5/8" TRACK BOLTS.

SEE DETAIL E

74"

OPENING HEIGHT (NOT OVER DOOR HEIGHT)

53"

39"

24"

5"

DETAIL E

TRACK JAMB BRACKETS

5 BRACKETS EACH SIDE

20GA. END STILES FASTENED TO PANEL WITH TOG-L-LOCS. USE END CAP OVER END STILES. (SEE DETAIL B)

STOP MOULDING NAILED EVERY 6" 6-D TYPE NAIL MIN.

18 GAGE GALV. STEEL CENTER HINGE ATTACHED WITH 4 FASTENERS

20 GAGE GALV. STEEL CENTER STILE ATTACHED WITH TOG-L-LOCS OR RIVETS

13 GAGE GALV. STEEL TRACK BRACKETS, SEE ABOVE FOR QUANTITY AND SPACING, FASTENED TO WOOD JAMBS WITH 5/16" X 1-1/2" LAG SCREWS & WASHERS. PREPARATION OF JAMBS BY OTHERS. SEE DETAIL E.

SECTION B-B

P.S.F. TABLE					
DOOR SIZE		DESIGN PRESSURE		TEST PRESSURE	
WIDTH	HEIGHT	POSITIVE	NEGATIVE	POSITIVE	NEGATIVE
16'-0"	8'-0"	+31.2	-34.0	+46.8	-51.0

NOTE: UNLESS SPECIFIED OTHERWISE, ALL FASTENERS ARE 1/4"-14 X 3/4" HEX HEAD SHEET METAL SCREWS OR 1/4"-20 X 5/8" HEX BOLTS AND NUTS.

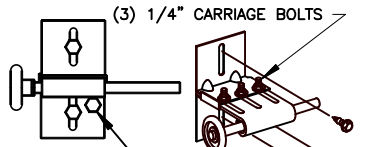
DOORS SHOWN ON THIS DRAWING HAVE BEEN DEMONSTRATED TO WITHSTAND THE PRESSURES LISTED IN THE TABLE ABOVE VIA TESTING TO ANSI/DASMA 108-05/12/17.

DETERMINATION OF SUITABILITY FOR SPECIFIC SITES IS THE RESPONSIBILITY OF OTHERS.

John E Scates PE
2560 King Arthur Blvd #124-54
Lewisville, TX 75056
TX-PE 56308, F-2203
FL-PE-51737

Professional Engineer's seal provided only for verification of windload construction details.

COMPLIES WITH THE WINDLOAD REQUIREMENTS OF THE IBC/IRC 2018.



DETAIL D

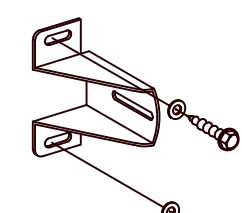
1.25"

3"

2.75"

3" 18GA WIDE STRUT

DETAIL A



DETAIL E

TRACK JAMB BRACKETS

5 BRACKETS EACH SIDE

1/2" POLYSTYRENE INSULATION STANDARD FOR MODEL 735

24" PANELS GALV. AND PREPAINTED STEEL 25 GAGE ALL MODELS EXCEPT 24 GAGE MODEL 750, 755.

13 GAGE GALV. STEEL TOP BRACKET WITH 10 GAGE ROLLER HOLDER. NOTE THAT ROLLER HOLDER CURL IS TURNED DOWN. SEE DETAIL D.

STRUT JUST BELOW TOP BRACKET.

2" HIGH STRENGTH ROLLER WITH 7/16" DIA. LONG STEM. 10 BALL STEEL

14 GAGE GALV. STEEL END HINGES (COMMERCIAL) ATTACHED WITH (6) SCREWS, TYP. (SEE DETAIL C.)

STRUT ON UPPER PART OF SECTION ON HINGE LEAF. (SEE DETAIL C.)

STRUT ON LOWER PART OF SECTION ABOVE HINGE LEAF. (SEE DETAIL C.)

STRUT ON UPPER PART OF SECTION ON HINGE LEAF. (SEE DETAIL C.)

STRUT ON LOWER PART OF SECTION ABOVE HINGE LEAF. (SEE DETAIL C.)

GALVANIZED STEEL STRUT. ATTACHED WITH 1/4" X 3/4" LONG HEX HEAD SELF DRILLING SCREWS. (2 PER VERTICAL STILE) STRUT ON UPPER PART OF SECTION ON HINGE LEAF. (SEE DETAIL C.)

1-3/8" POLYSTYRENE INSULATION OPTIONAL FOR MOD. 724, 730, 750, 755, 426.

STRUT ON BOTTOM BRACKET

13 GAGE GALV. STEEL BOTTOM BRACKET ATTACHED WITH 2 SCREWS.

SECTION A-A

OPTIONAL SSB GLASS LIGHTS

ALTERNATE CONSTRUCTION FOR WINDOWS USING (2) STRUTS

OPTIONAL LONG PANEL EMBOSSES

8 STRUTS 3" 18GA WIDE (SEE DETAIL A) LOCK OPTIONAL

SEE DETAIL C

CENTER STILES (5 COLUMNS) CENTER HINGES (3 COLUMNS)

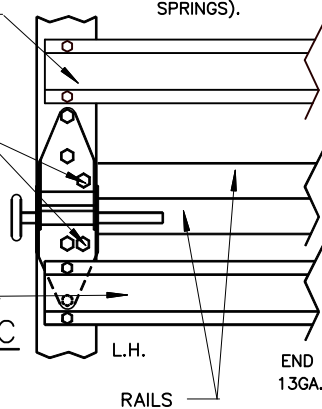
NOTE: DOOR MUST BE INSTALLED WITH EITHER AN ELECTRIC OPERATOR OR A LOCK (MUST ENGAGE BOTH TRACKS ON DOORS WITH EXTENSION SPRINGS).

4" X 16" AIR VENTS (4) REQ'D. (120 SQ. IN. MIN. TOTAL OPEN AREA) OPTIONAL.

TYP. LOWER STRUT REF. USE TWO EXTRA SELF DRILLING SCREWS THROUGH TOP AND BOTTOM LEAF OF HINGE, END STILE & RAIL AS SHOWN. TYPICAL EACH END HINGE.

TYP. UPPER STRUT REF.

DETAIL C

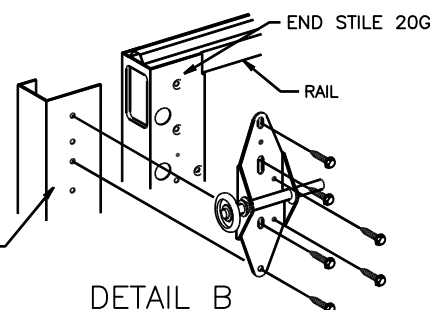


L.H.

END CAP 13GA.

RAILS

DETAIL B



END STILE 20GA.

RAIL

NOTE: GLAZING DOES NOT SATISFY IMPACT DEBRIS REQUIREMENTS IN FBC

FL 15080

16 X 8

E	ROLLER NOTES, PE ADDRESS	5/27/20
D	REV LOGO & ADDRESS	1/28/13
C		12/15/11 RLB
B	2866	3-10-08 RLB
A	2848	11-1-07 RLB
	2810	3-8-07 RLB
REV.	E.C.N.	DATE APPROV.

W

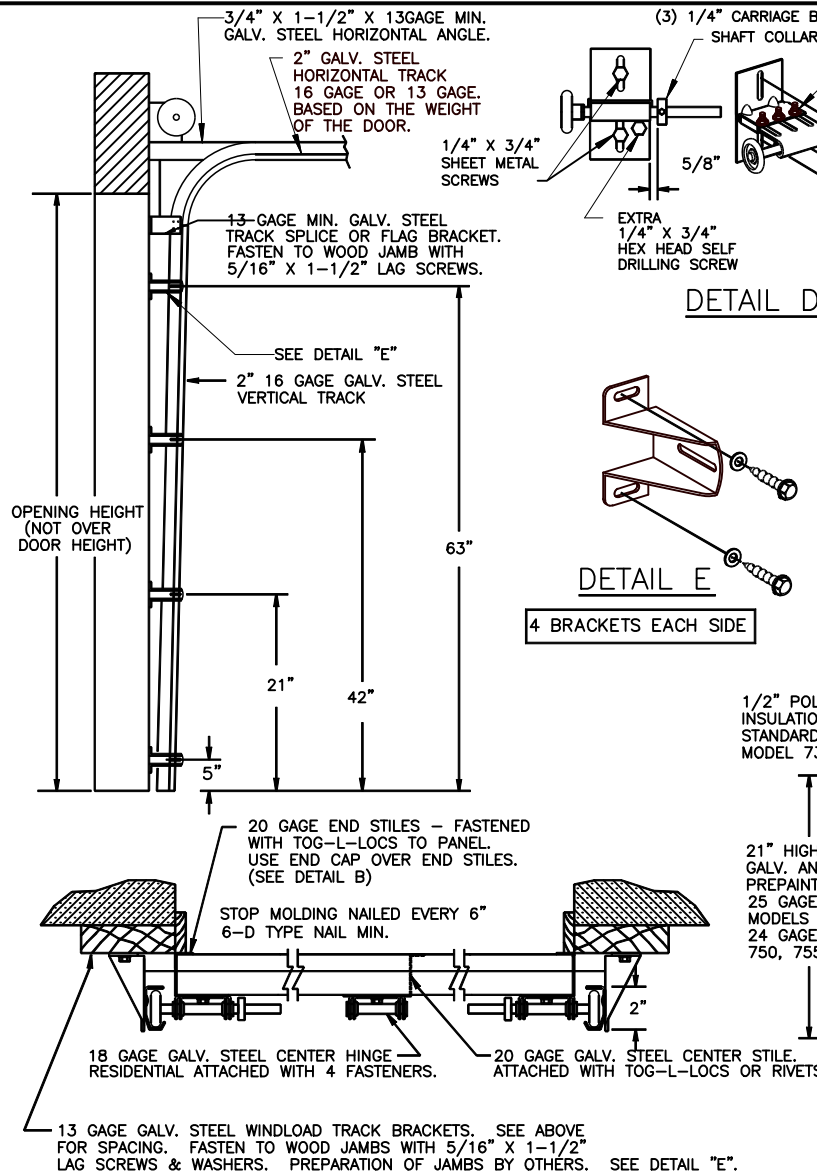
WINDSOR DOOR

5800 SCOTT HAMILTON DR. LITTLE ROCK, AR 72209 (501) 562-1872

MODELS: 724, 426, 730, 735, 750, 755

PART NAME: WINDLOAD RESIDENTIAL PAN DOORS W2 C & W4 B

TOLERANCE	FRAC. ± 1/64" DEC. ± .015 ANG. ± 1°
NEXT LEVEL	DATE: 2/27/07
DRN. BY	BH
DWG. NO.	99-B-082
SHEET	4 OF 6



SECTION B-B

NOTE: ALL NON-DESCRIPTIVE FASTENERS SHOWN TO BE 1/4"-20 X 5/8" HEX BOLTS & NUTS OR 1/4" X 3/4" LONG HEX HEAD SHEET METAL SCREWS.

P.S.F. TABLE					
DOOR SIZE		DESIGN PRESSURE		TEST PRESSURE	
WIDTH	HEIGHT	POSITIVE	NEGATIVE	POSITIVE	NEGATIVE
18'-0"	7'-0"	+31.2	-34.0	+46.8	-51.0

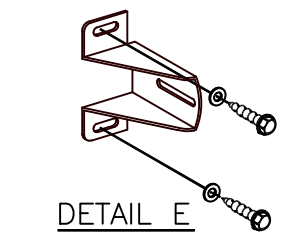
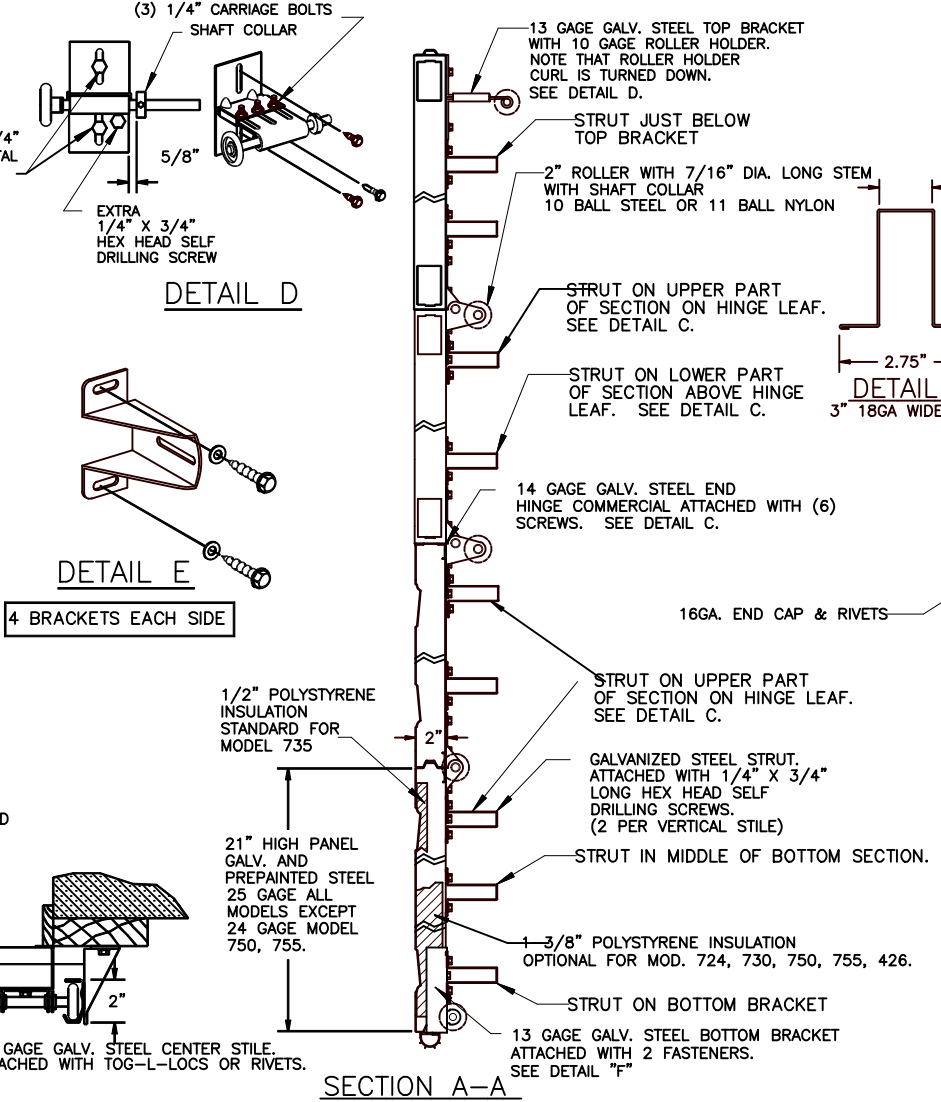
DOORS SHOWN ON THIS DRAWING HAVE BEEN DEMONSTRATED TO WITHSTAND THE PRESSURES LISTED IN THE TABLE ABOVE VIA TESTING TO ANSI/DASMA 108-05/12/17.

DETERMINATION OF SUITABILITY FOR SPECIFIC SITES IS THE RESPONSIBILITY OF OTHERS.

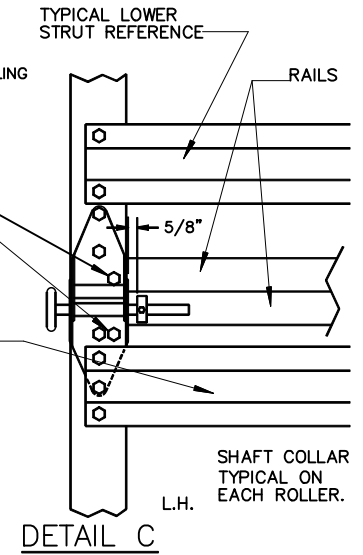
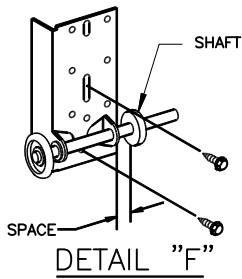
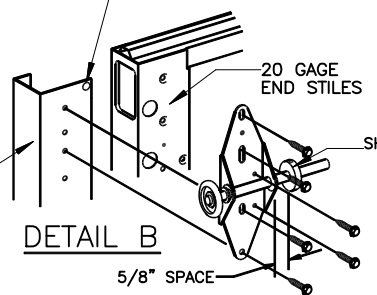
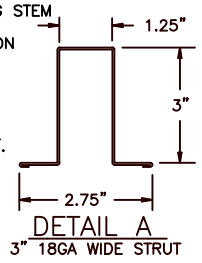
John E Scates PE
2560 King Arthur Blvd #124-54
Lewisville, TX 75056
TX-PE 56308, F-2203
FL-PE-51737

Professional Engineer's seal provided only for verification of windload construction details.

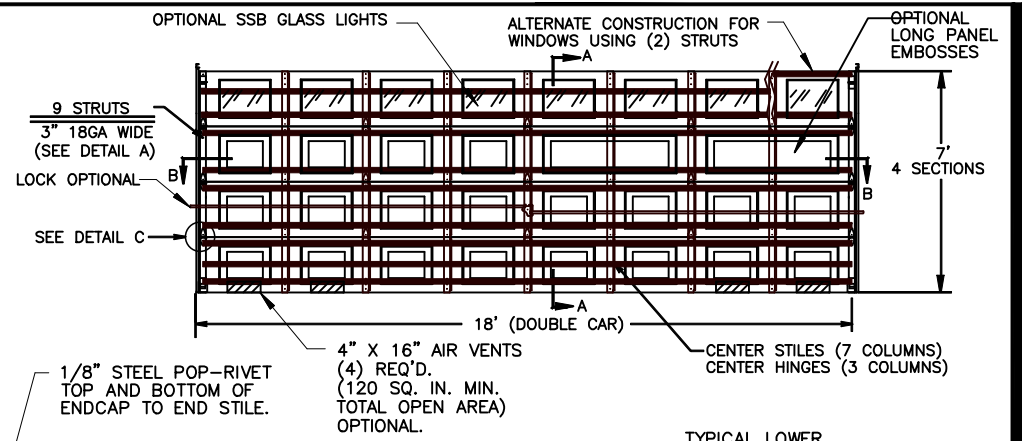
COMPLIES WITH THE WINDLOAD REQUIREMENTS OF THE IBC/IRC 2018.



4 BRACKETS EACH SIDE



NOTE: DOOR MUST BE INSTALLED WITH EITHER AN ELECTRIC OPERATOR OR A LOCK (MUST ENGAGE BOTH TRACKS ON DOORS WITH EXTENSION SPRINGS).



NOTE: GLAZING DOES NOT SATISFY IMPACT DEBRIS REQUIREMENTS IN FBC

FL 15080

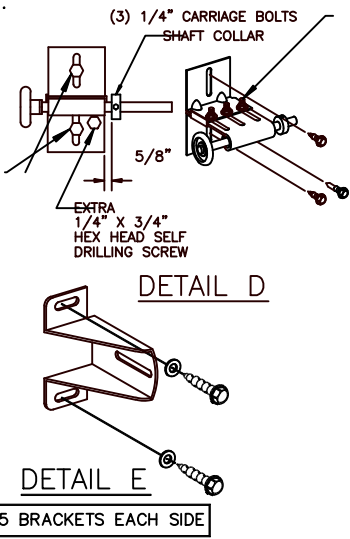
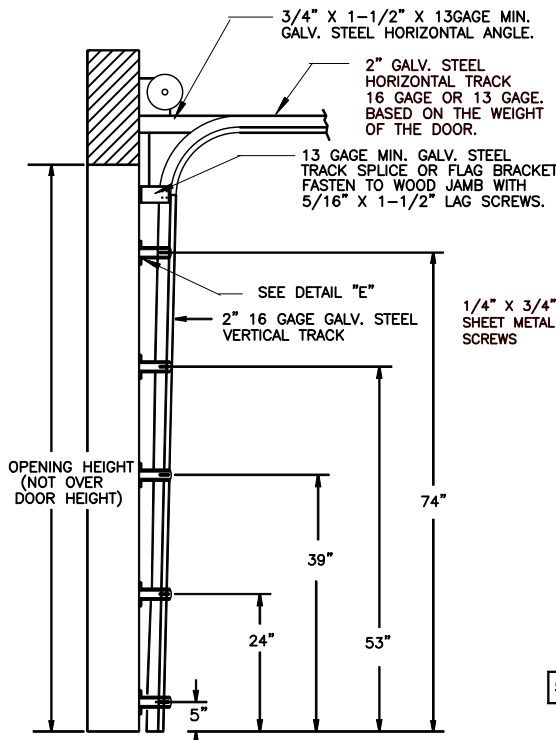
18 X 7

E	ROLLER NOTES, PE ADDRESS	5/27/20
D	REV LOGO & ADDRESS	1/28/13
C		12/15/11 RLB
B	2866	3-10-08 RLB
A	2848	11-1-07 RLB
		2810 3-8-07 RLB
REV.	E.C.N.	DATE
		APPROV.

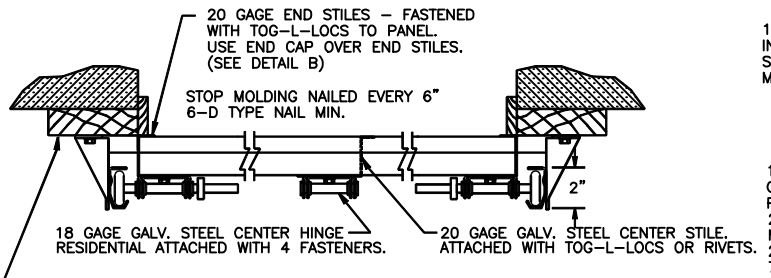


5800 SCOTT HAMILTON DR.
LITTLE ROCK, AR 72209
(501) 562-1872

MODELS: 724, 426, 730, 735, 750, 755			
PART NAME: WINDLOAD RESIDENTIAL PAN DOORS W2 C & W4 B		TOLERANCE	
FRAC. ± 1/64"	DEC. ± .015	ANG. ± 1"	
NEXT LEVEL	DATE: 2/27/07	DWG. NO. 99-B-082	
PLOT SCALE	DRN. BY BH	SHEET 5 OF 6	



NOTE: ALL NON-DESCRIPTIVE FASTENERS SHOWN TO BE 1/4"-20 X 5/8" HEX BOLTS & NUTS OR 1/4" X 3/4" LONG HEX HEAD SHEET METAL SCREWS.



SECTION B-B

P.S.F. TABLE					
DOOR SIZE		DESIGN PRESSURE		TEST PRESSURE	
WIDTH	HEIGHT	POSITIVE	NEGATIVE	POSITIVE	NEGATIVE
18'-0"	8'-0"	+31.2	-34.0	+46.8	-51.0

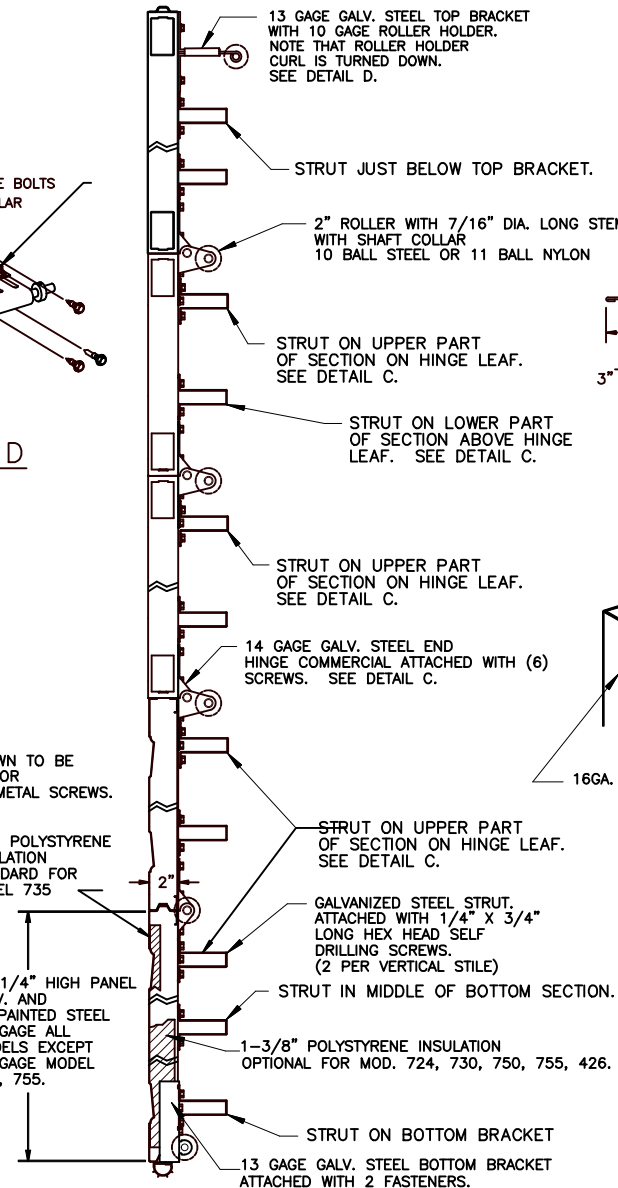
DOORS SHOWN ON THIS DRAWING HAVE BEEN DEMONSTRATED TO WITHSTAND THE PRESSURES LISTED IN THE TABLE ABOVE VIA TESTING TO ANSI/DASMA 108-05/12/17.

DETERMINATION OF SUITABILITY FOR SPECIFIC SITES IS THE RESPONSIBILITY OF OTHERS.

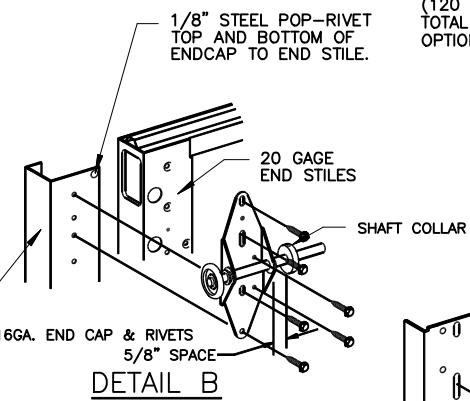
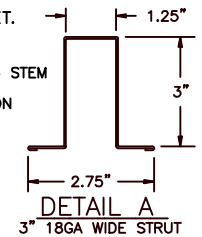
John E. Scates PE
2560 King Arthur Blvd #124-54
Lewisville, TX 75056
TX-PE 56308, F-2203
FL-PE-51737

Professional Engineer's seal provided only for verification of windload construction details.

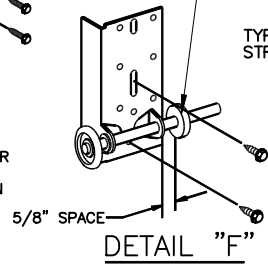
COMPLIES WITH THE WINDLOAD REQUIREMENTS OF THE IBC/IRC 2018.



SECTION A-A



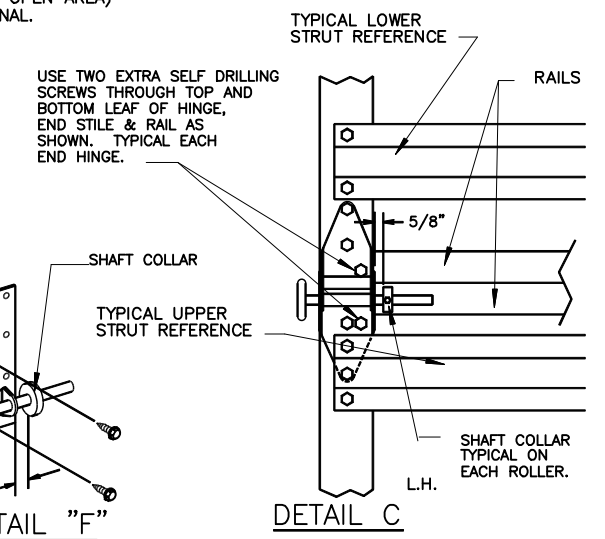
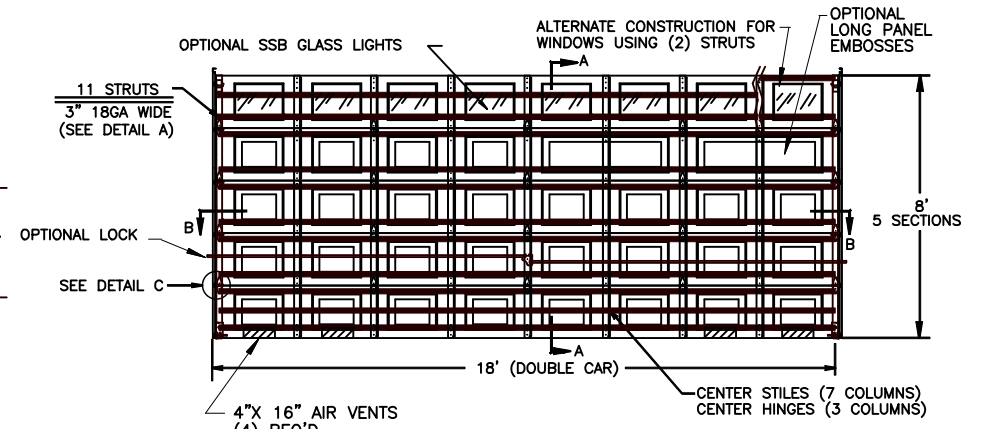
NOTE: DOOR MUST BE INSTALLED WITH EITHER AN ELECTRIC OPERATOR OR A LOCK (MUST ENGAGE BOTH TRACKS ON DOORS WITH EXTENSION SPRINGS).



NOTE: GLAZING DOES NOT SATISFY IMPACT DEBRIS REQUIREMENTS IN FBC

FL 15080

18 X 8



E		ROLLER NOTES, PE ADDRESS	5/27/20	TOLERANCE		FRAC. ± 1/64" DEC. ± .015 ANG. ± 1'		NEXT LEVEL		DATE: 2/27/07		DWG. NO. 99-B-082	
D		REV LOGO & ADDRESS	1/28/13	TOLERANCE		FRAC. ± 1/64" DEC. ± .015 ANG. ± 1'		PLOT SCALE		DRN. BY BH		SHEET 6 OF 6	
C			12/15/11	TOLERANCE		FRAC. ± 1/64" DEC. ± .015 ANG. ± 1'		PLOT SCALE		DRN. BY BH		SHEET 6 OF 6	
B		2866	3-10-08	TOLERANCE		FRAC. ± 1/64" DEC. ± .015 ANG. ± 1'		PLOT SCALE		DRN. BY BH		SHEET 6 OF 6	
A		2848	11-1-07	TOLERANCE		FRAC. ± 1/64" DEC. ± .015 ANG. ± 1'		PLOT SCALE		DRN. BY BH		SHEET 6 OF 6	
		2810	3-8-07	TOLERANCE		FRAC. ± 1/64" DEC. ± .015 ANG. ± 1'		PLOT SCALE		DRN. BY BH		SHEET 6 OF 6	
REV.		E.C.N.	DATE	APPROV.		SCALE NONE		PLOT SCALE		DRN. BY BH		SHEET 6 OF 6	



5800 SCOTT HAMILTON DR. LITTLE ROCK, AR 72209 (501) 562-1872

MODELS: 724, 426, 730, 735, 750, 755

PART NAME: WINDLOAD RESIDENTIAL PAN DOORS W2 C & W4 B