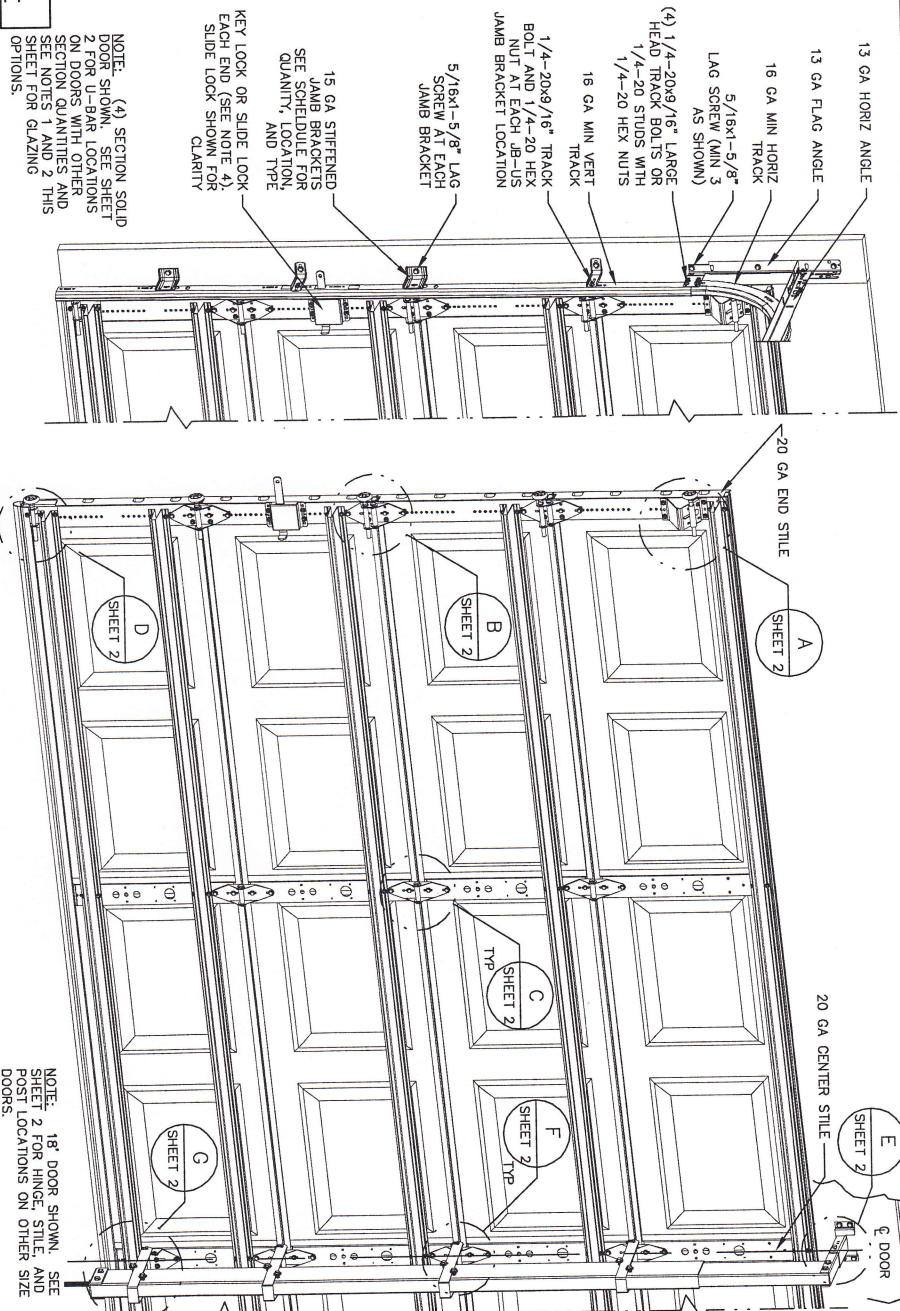


- NOTES:**
- IMPACT RESISTANT GLAZING SYSTEM MAY BE INSTALLED IN TOP OR INTERMEDIATE SECTION (WITH OR WITHOUT DECORATIVE INSERTS). GLAZING SHALL BE 1/4" POLYCARBONATE. MAXIMUM GLAZING DIMENSIONS SHALL BE 11' x 17' CUTOUT FASTENED WITH #8 x 3/8" STAINLESS STEEL BOLTS AND 2x4 ALUMINUM ANGLE. SEE DETAIL J ON SHEET 2 FOR ASSEMBLY DETAILS.
 - NON-IMPACT RESISTANT GLAZING OPTION - .090" MINIMUM SSB GLAZING IN MOLDED FRAMES SCREWED TOGETHER WITH A MINIMUM OF (10) #8x1" SCREWS INSTALLED IN TOP OR INTERMEDIATE SECTION (WITH OR WITHOUT DECORATIVE INSERTS). MEETS UNIFORM STATIC WIND PRESSURES SHOWN ON THIS DRAWING. GLAZING SHALL HAVE A MAXIMUM HEIGHT OF 10.68' AND A MAXIMUM LENGTH OF 16.94'. GLAZING IS NOT IMPACT RESISTANT AND DOES NOT MEET THE REQUIREMENTS FOR WIND-BORNE DEBRIS REGIONS.
 - WIND OR WOOD DOOR STOP NAILED A MAXIMUM OF 6" O.C. MUST OVERLAP TOP AND BOTH ENDS OF PANELS MINIMUM 7/16".
 - KEY LOCK OR SLIDE LOCKS REQUIRED.
 - LOUVER OPTION - .040" MINIMUM LOUVERS IN MOLDED FRAMES SCREWED TOGETHER WITH A MINIMUM OF (10) #8x1" SCREWS INSTALLED IN THE BOTTOM AND DO NOT MEET THE REQUIREMENTS FOR WIND-BORNE DEBRIS REGIONS.
 - SECTION STEEL TO HAVE A MINIMUM 26 GA THICKNESS.
 - THE DESIGN OF THE SUPPORTING STRUCTURAL ELEMENTS SHALL BE THE RESPONSIBILITY OF THE PROFESSIONAL OF RECORD FOR THE BUILDING AND STRUCTURE AND IN ACCORDANCE WITH CURRENT BUILDING CODES FOR THE LOADS LISTED ON THIS DRAWING.
 - DOOR JAMB TO BE MINIMUM 2x4 STRUCTURAL GRADE LUMBER. REFER TO JAMB CONNECTION SUPPLEMENT FOR ATTACHMENT TO SUPPORTING STRUCTURE.
 - FOR LOW HEAD ROOM LEFT CONDITIONS, TOP BRACKET SHALL BE A 13 GA LHR 7/4 TOP BRACKET WITH A MINIMUM OF (3) 1/4-14x7/8" SELF DRILLING CHIP-TITE SCREWS IN LIEU OF THE BRACKET SHOWN ON THIS DRAWING. U-BAR ON TOP SECTION SHALL BE INSTALLED ON TOP OF LHR TOP BRACKETS.



NOTE: (4) SECTION SOLID DOOR SHOWN. SEE SHEET 2 FOR U-BAR LOCATIONS ON DOORS WITH OTHER SECTION QUANTITIES AND SEE NOTES 1 AND 2 THIS SHEET FOR GLAZING OPTIONS.

NOTE: 18" DOOR SHOWN. SEE SHEET 2 FOR HINGE, STILE AND POS LOCATIONS ON OTHER SIZES DOORS.

- REVISIONS**
- | | | |
|----|---|--------------|
| P1 | MODIFIED NOTES TO STATE THAT LOUVERS ARE NOT IMPACT RESISTANT. | GRT 6/29/07 |
| P2 | MODIFIED JAMB BRACKET SCHEDULE ALLOWING REPLACEMENT OF Q1 WITH J8-US. REMOVED CONCRETE SPECIFICATION FROM NOTES AND ADDED SPECIFICATION FROM CONCRETE SPECIFICATION. ADDED INFO TO DOOR. ADDED MAX GLAZING DIMENSION TO NOTES. SHEET 1 ADDED TRACK TO FLAG CONNECTION NOTE. MODIFIED SUPERIMPOSED DESIGN PRESSURE LOAD CHART. | GRT 11/10/07 |
| P3 | MODIFIED LOUVER OPTION. ADDED TEXAS LICENSE NUMBERED IMPACT RESISTANT GLAZING. | GRT 9/19/08 |
| P4 | UPDATED TITLE BLOCK AND IMPACT GLAZING. | GRT 4/16/12 |

LOADS ON SUPPORTING STRUCTURE

MAX DOOR WIDTH	MAX DOOR HEIGHT	UNIFORM LOAD (LBS/FT)	POINT LOAD AT HEADER AND SLAB AT EACH POST LOCATION (LBS)
15'-0"	7'-0"	+147.7/-164.4	+933.6/-1039.4
16'-0"	7'-0"	+147.7/-164.4	+1060.9/-1181.2
16'-0"	8'-0"	+135.0/-150.3	+1028.4/-1145.0
17'-0"	7'-0"	+138.7/-154.4	+1127.3/-1255.1
17'-0"	8'-0"	+138.7/-154.4	+1281.0/-1426.2
18'-0"	7'-0"	+142.7/-158.8	+1224.2/-1363.0
18'-0"	8'-0"	+142.7/-158.8	+1391.1/-1548.8

JAMB BRACKET SCHEDULE

DOOR HEIGHT	NO. OF SECTIONS	NO. OF JAMB BRACKETS (EACH JAMB)	TRACK TYPE	LOCATION OF CENTERLINE OF JAMB BRACKETS MEASURED FROM BOTTOM OF TRACK (ALL DIMENSIONS ± 2")
6'-6"	4	4	Q1	1/4" (Q1), 3/4" (J8-US), 4/4" (Q1), 5/6" (J8-US)
6'-6"	4	4	FAT	1/4" (Q1), 2/8-3/4" (J8-US), 3/8" (J8-US), 5/7-1/4" (J8-US)
7'-0"	4	4	Q1	1/4" (Q1), 2/8-1/2" (J8-US), 4/4" (Q1), 6/3-1/4" (J8-US)
7'-0"	4	4	FAT	1/4" (Q1), 2/8-3/4" (J8-US), 4/2" (J8-US), 6/3-1/4" (J8-US)
7'-6"	5	5	Q1	1/4" (Q1), 2/8-1/2" (J8-US), 4/3" (Q1), 6/2-1/2" (Q1), 7/2" (J8-US)
7'-6"	5	5	FAT	1/4" (Q1), 2/8-3/4" (J8-US), 4/5" (J8-US), 6/3" (J8-US), 7/4-1/2" (J8-US)
8'-0"	5	5	Q1	1/4" (Q1), 3/4" (J8-US), 4/6" (Q1), 5/8" (J8-US), 6/6-1/2" (Q1)
8'-0"	5	5	FAT	1/4" (Q1), 3/4" (J8-US), 2/8-3/4" (J8-US), 4/8" (J8-US), 6/7-1/2" (J8-US), 7/7-1/2" (J8-US)

NOTE: (J8-US) FOLLOWING DIMENSION DENOTES SLOTTED JAMB BRACKET ATTACHED TO TRACK WITH 1/4-20x9/16" TRACK BOLT AND NUT. (Q1) FOLLOWING DIMENSION DENOTES QUICK INSTALL JAMB BRACKET INSTALLED IN BUTTERFLY SLOT. NO ADDITIONAL HARDWARE NEEDED TO ATTACH TO TRACK. ALL DOORS GREATER THAN 8' IN HEIGHT REQUIRE USE OF CONTINUOUS WALL ANGLE. SEE SUPPLEMENT TRACK CHART FOR DETAILS.

PROFESSIONAL ENGINEER'S SEAL PROVIDED ONLY FOR VERIFICATION OF WINDLOAD CONSTRUCTION DETAILS.

MARK A. SANCHEZ, PE
 2561 S. SAMUEL TX 77813
 TEL: 771-3308
 FAX: 1069291

MARK A. SANCHEZ, PE
 2561 S. SAMUEL TX 77813
 TEL: 771-3308
 FAX: 1069291

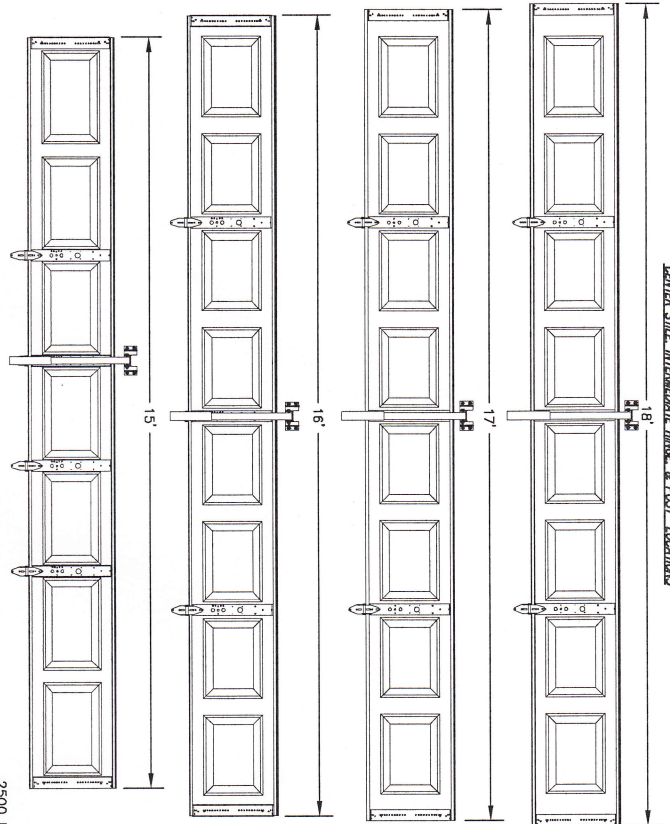
13 GA HORIZ ANGLE
 13 GA FLAG ANGLE
 16 GA MIN HORIZ TRACK
 5/16x1-5/8" LAG SCREW (MIN 3 AS SHOWN)
 (4) 1/4-20x9/16" LARGE HEAD TRACK BOLTS OR 1/4-20 STUDS WITH 1/4-20 HEX NUTS
 16 GA MIN VERT TRACK
 1/4-20x9/16" TRACK BOLT AND 1/4-20 HEX NUT AT EACH J8-US JAMB BRACKET LOCATION
 15 GA STIFFENED JAMB BRACKETS SEE SCHEDULE FOR QUANTITY, LOCATION, AND TYPE
 KEY LOCK OR SLIDE LOCK EACH END (SEE NOTE 4). SLIDE LOCK SHOWN FOR CLARITY

Wayne Dalton

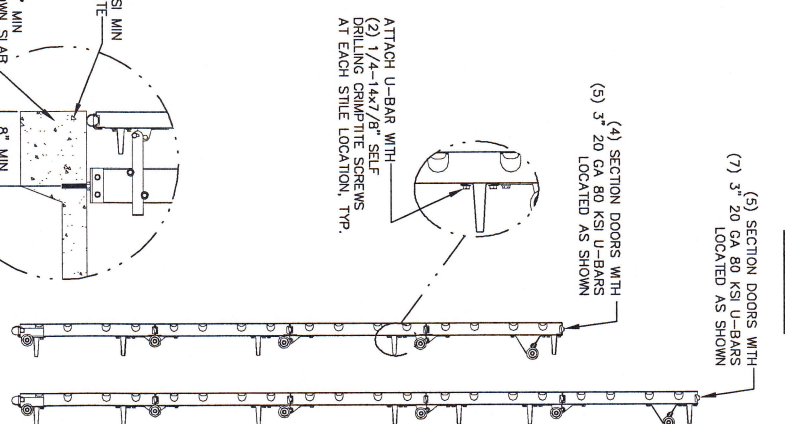
A DIVISION OF OVERHEAD DOOR CORP.
 3395 ADDISON DRIVE
 PENSACOLA, FLORIDA 32514
 (850) 474-9890

STATIC PRESSURE RATINGS	APPROVED SIZES	SCALE: N.T.S.	SIZE: A
DESIGN (PSF): +34.40/-36.30	MAX WIDTH: 18'-0"	DATE	NAME
TEST (PSF): +51.60/-57.45	MAX HEIGHT: 8'-0"	5/23/06	GRT
IMPACT/CYCLIC RATED (YES/NO): YES	MAX SECTION HEIGHT: 21" CHECKED	1/22/07	MRB
MODELS 8000/8100		SHEET 1 OF 2	
WINDLOAD SPECIFICATION OPTION CODE 1143		DRAWING PART NO.	REV.
		327023	P4

CENTER STILE INTERMEDIATE HINGE & POST LOCATIONS



U-BAR LOCATIONS



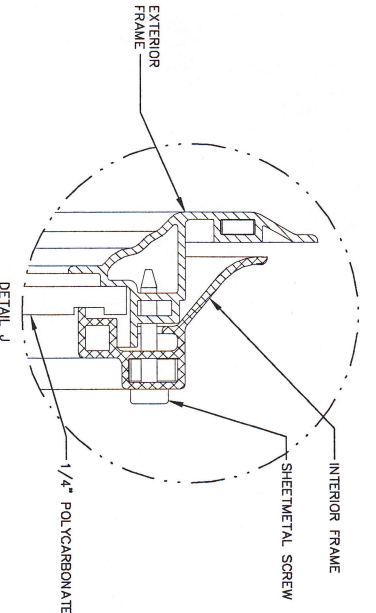
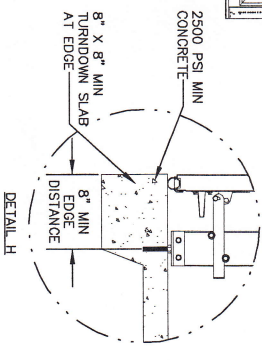
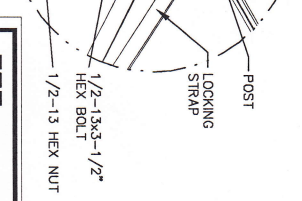
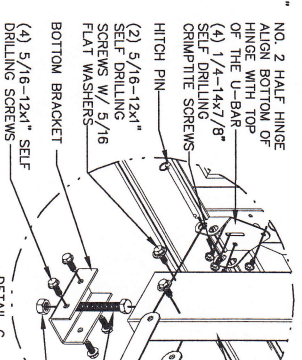
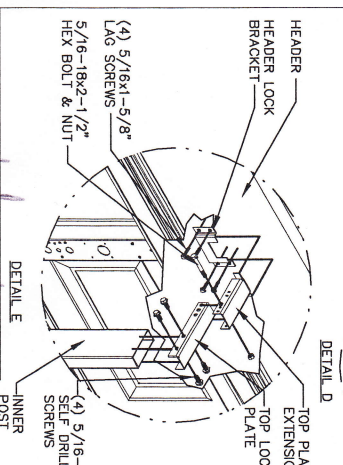
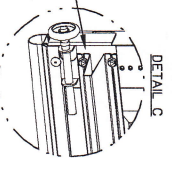
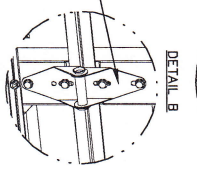
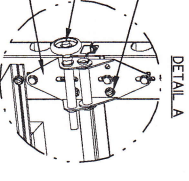
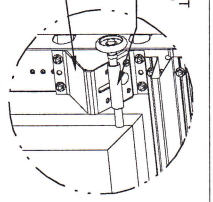
13 GA ROLLER SLIDE ATTACHED TO BRACKET WITH 5/16-18 BOLT & NUT IN CENTER SLOT AND 1/4-20x9/16" TRACK BOLT & 1/4-20 HEX NUT THROUGH ANY TWO ALIGNING HOLES
(4) 1/4-14x7/8 SELF DRILLING GRIMPTITE SCREWS

ADD (2) 1/4-14x7/8" SELF DRILLING GRIMPTITE SCREWS (INSIDE OF EACH END HINGE)

2" NYLON STORMGARD ROLLER WITH 4-1/2" STEM
14 GA WIDE BODY END HINGE ATTACHED WITH (4) 1/4-14x5/8" SELF TAPPING SCREWS

18 GA NARROW BODY INTERMEDIATE HINGE ATTACHED WITH (4) 1/4-14x5/8" SELF TAPPING SCREWS

14 GA BOTTOM BRACKET ATTACHED WITH (2) 1/4-14x7/8" SELF DRILLING GRIMPTITE SCREWS THROUGH STILE AND (1) 1/4-14x5/8" SELF DRILLING TAMPER RESISTANT SCREW



(5) SECTION DOORS WITH 3" 20 GA 80 KSI U-BARS LOCATED AS SHOWN

(4) SECTION DOORS WITH 3" 20 GA 80 KSI U-BARS LOCATED AS SHOWN

ATTACH U-BAR WITH (2) 1/4-14x7/8" SELF DRILLING GRIMPTITE SCREWS AT EACH STILE LOCATION, TYP.

- REVISIONS**
- P1 MODIFIED NOTES TO STATE THAT LOUVERS ARE NOT IMPACT RESISTANT. GRT 6/29/07
 - P2 MODIFIED JAMB BRACKET SCHEDULE ALLOWING REPLACEMENT OF Q1 WITH JB-US. REMOVED CONCRETE SPECIFICATION FROM DETAIL H. SHEET 2 FOR CONCRETE SPECIFICATION. GRT 9/19/08
 - P3 MODIFIED LOUVER OPTION. ADDED TEXAS LICENSE NUMBER TO TITLE BLOCK. ADDED IMPACT RESISTANT GLAZING. GRT 9/19/08
 - P4 UPDATED TITLE BLOCK AND IMPACT GLAZING GRT 4/16/12

MARK A. SEAKOLF, PE
2501 S. STATE HWY 121, SUITE 200
LEWISVILLE, TX 75067
TEL: 972-981-7283
FAX: 972-981-7281

Wayne Dalton
A DIVISION OF OVERHEAD DOOR CORP.
3395 ADDISON DRIVE
PENSACOLA, FLORIDA 32514
(850) 474-9890

STATIC PRESSURE RATINGS	APPROVED SIZES	SCALE: N.T.S.	SIZE: A
DESIGN (PSF): +34.40/-38.30	MAX WIDTH: 18'-0"	DATE	NAME
TEST (PSF): +51.60/-57.45	MAX HEIGHT: 8'-0"	5/23/08	GRT
IMPACT/CYCLIC RATED (YES/NO): YES	MAX SECTION HEIGHT: 21" (CHECKED)	1/22/07	MRB
MODELS 8000/8100		SHEET 2 OF 2	REV.
WINDLOAD SPECIFICATION OPTION CODE 1143		DRAWING PART NO. 327023	P4