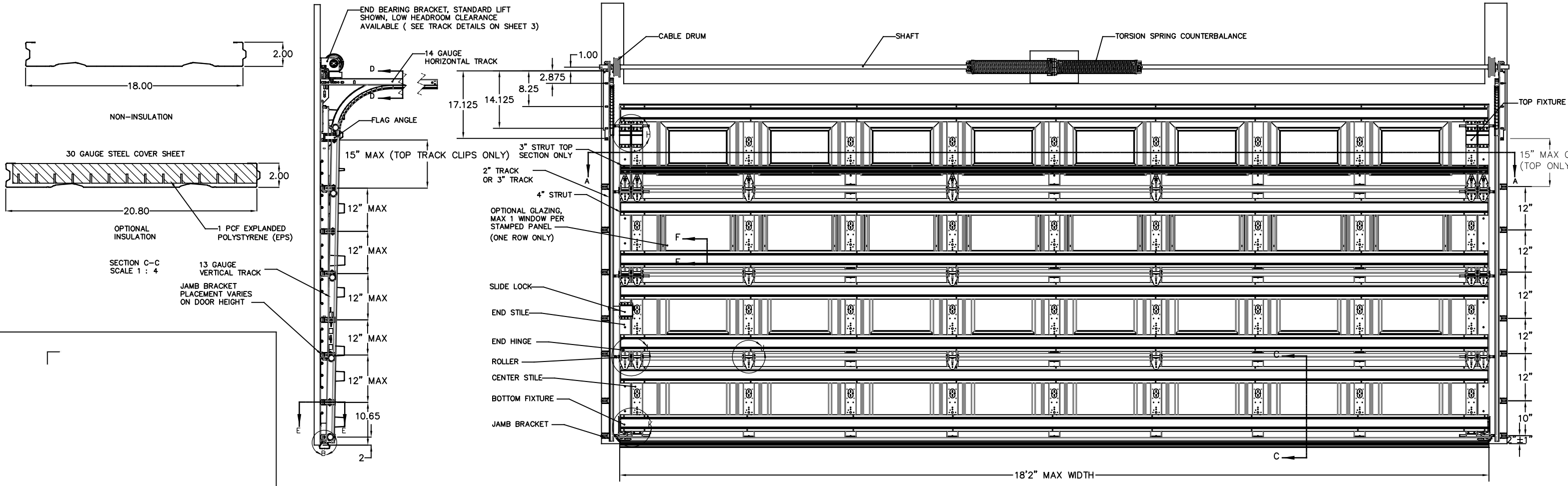
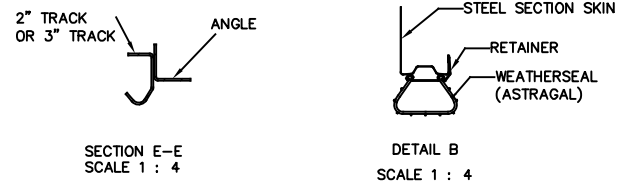
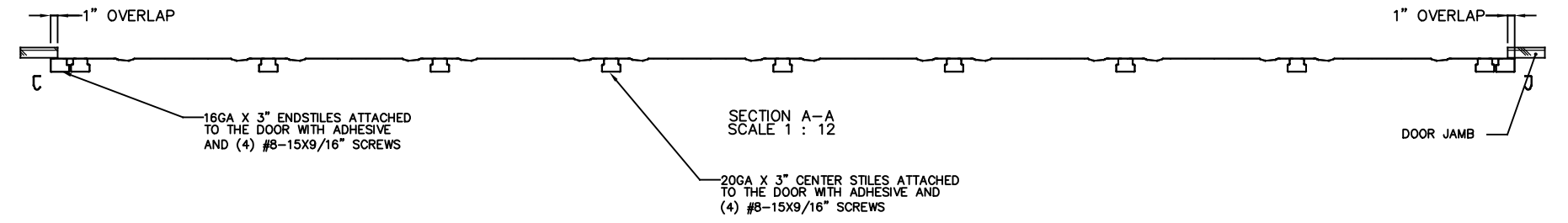


NOTES: (UNLESS OTHERWISE SPECIFIED)

1. RATED DESIGN LOAD +46/-52 PSF.
2. SECTION HEIGHTS MAY VARY TO CREATE VARIOUS DOOR HEIGHTS, 20.8" MAXIMUM SECTION HEIGHT.
3. MINIMUM 1" OVERLAP ON BOTH JAMBS REQUIRED TO MEET NEGATIVE DESIGN PRESSURES.
4. TESTED IN ACCORDANCE WITH DADE COUNTY PROTOCOLS TAS 201-94, TAS 202-94, & TAS 203-94.
5. DOOR SKIN MUST BE 33,000 PSI MIN. YIELD STRENGTH.
6. JAMB LOAD CALCULATIONS:
 $(1/2 \text{ DOOR WIDTH})(1 \text{ FT OF HEIGHT})(\text{DESIGN PRESSURE})$
 $(9.067)(1 \text{ FOOT})(46.00 \text{ AND } -52.00)(417.1/-471.5) \text{ LB.}$
7. JAMB FASTENER REQUIREMENTS:
 $F_x = (1/2 \text{ DOOR WIDTH})(1 \text{ FT OF HEIGHT})(\text{DESIGN PRESSURE})$
 $F_x = 417.1 \text{ LBS.}$
8. DOOR SKIN MATERIAL SHALL BE GALVANIZED ACCORDING TO ASTM A-525 TO G90 MIN, WITH BAKED-ON PRIMER, AND BAKED-ON POLYESTER PAINT TOP COAT.
9. FOR ANCHORING INTO WOOD, USE ONE 5/16" LAG SCREW PER JAMB BRACKET WITH 1-1/2" EMBEDMENT INTO SOUTHERN PINE (G=0.55) OR BETTER.
10. APPROVED INSULATED AND NON-INSULATED: 8000 (25GA), 8100 (25GA), 8200 (25GA), 0.0209" MIN STEEL.
11. WELD SLOT ON ANGLE AND 3/32" X 1" LONG ON 12" CENTERS. "IF WELDING MOUNTING OPTION IS CHOSEN."
12. LIFT UP MECHANISM-MANUAL, CHAIN LIFT, OR OPERATOR IS NOT PART OF THIS APPROVAL.
13. STANDARD LIFT, HIGH LIFT, VERTICAL LIFT, AND LOW HEADROOM TRACK IS AVAILABLE. FOR LOW HEADROOM LIFT CONDITIONS TOP BRACKET SHALL BE 13 GA LHR 7/4 TOP BRACKET WITH A MIN OF (3) 1/4 - 14 X 7/8" SELF DRILLING CRIMPTITE SCREWS IN LIEU OF THE BRACKET SHOWN ON DRAWING. U-BAR ON TOP SECTION SHALL BE INSTALLED ON TOP OF LHR TOP BRACKETS.
14. ATTACH STRUTS WITH (2) 1/4-14x7/8" SELF DRILLING CRIMPTITE SCREWS AT ALL STILE LOCATIONS, TYP. LOCATED WITHIN 6" , +/- 3" FROM TOP AND BOTTOM OF SECTION.
15. KEY LOCK, SLIDE LOCK, OR DRAWBAR OPERATOR REQUIRED.
16. IMPACT RESISTANT GLAZING OPTION- IMPACT RESISTANT GLAZING SYSTEM MAY BE INSTALLED INTERMEDIATE SECTION OR TOP SECTION. GLAZING SHALL BE 1/4" POLYCARBONATE. 13-3/4" X 20-1/8" MAXIMUM SIZE, FASTENED WITH # 8 X 1" SMS: 3X MIN ALONG THE HORIZONTAL AND 2X MIN ALONG THE VERTICAL. SEE DETAIL F-F ON SHEET 2 FOR ASSEMBLY DETAILS.
17. THE DESIGN OF THE SUPPORTING STRUCTURAL ELEMENTS SHALL BE THE RESPONSIBILITY OF THE PROFESSIONAL OF RECORD FOR THE BUILDING OR STRUCTURE AND IN ACCORDANCE WITH CURRENT BUILDING CODES FOR THE LOADS LISTED ON THIS DRAWING.
18. DOORS ARE DESIGNED AND MANUFACTURED TO COMPLY WITH REGULATIONS PER BUILDING CODES: 2018 IRC AND 2018 IBC.

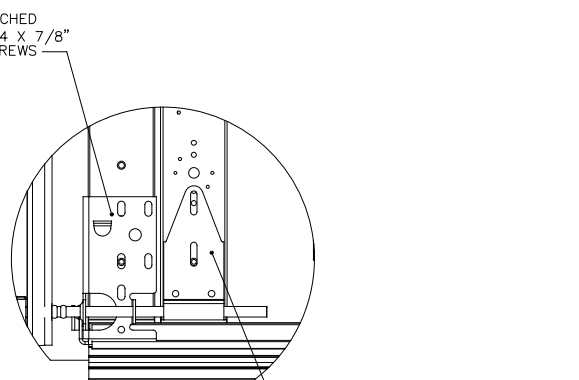
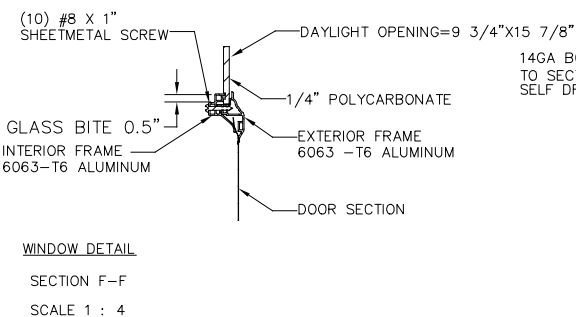
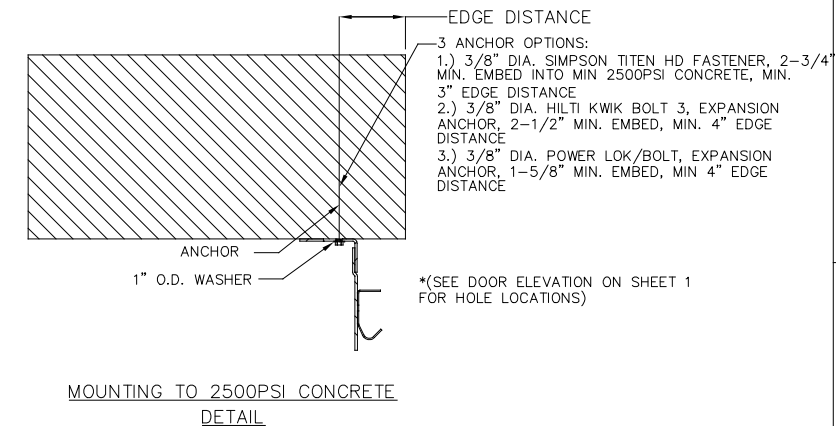
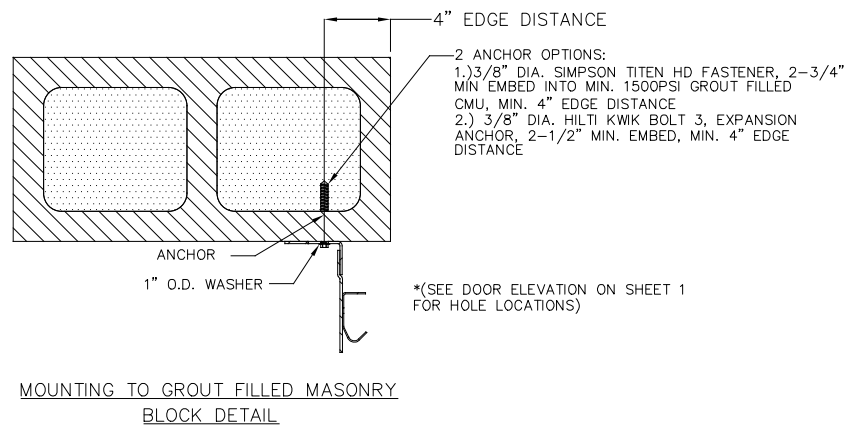
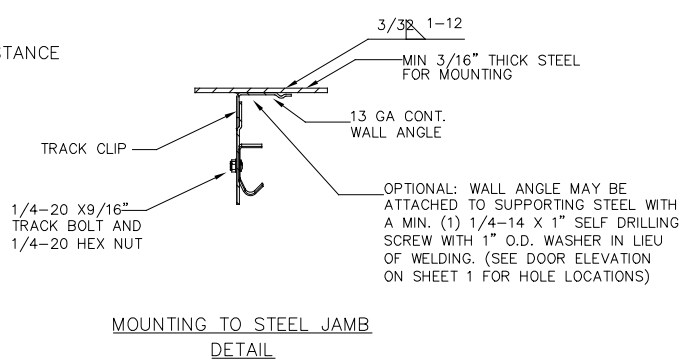
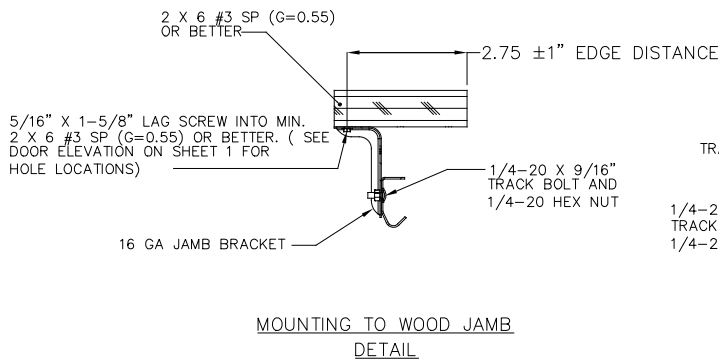
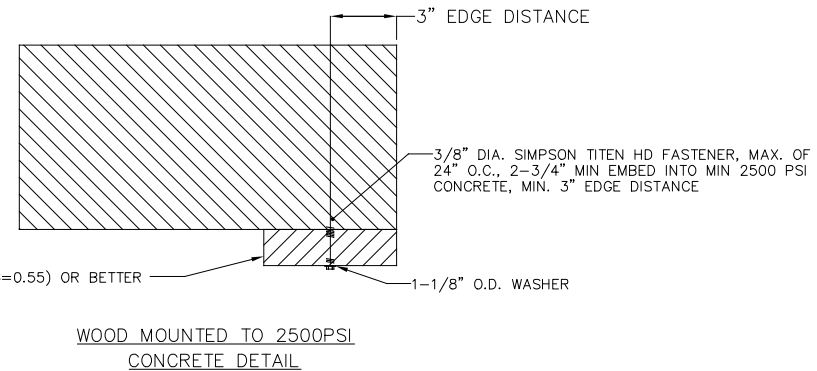
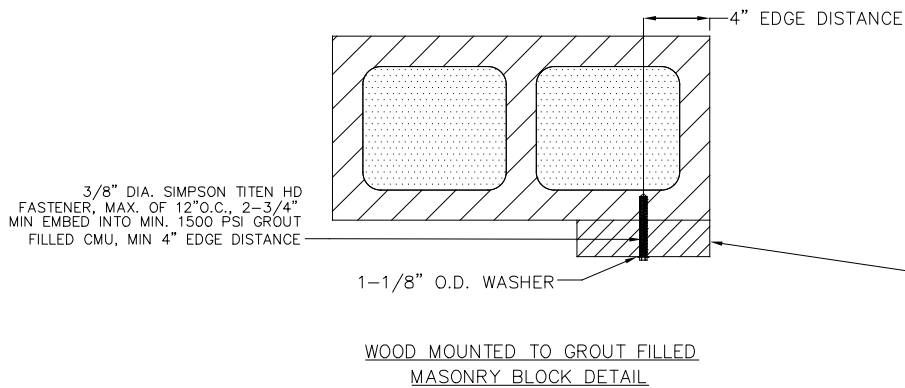
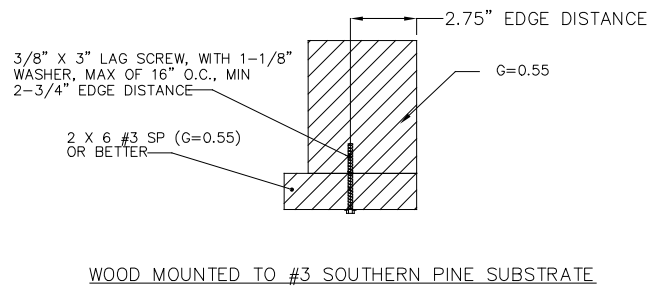
REVISIONS				
ER	REV	DESCRIPTION	DATE	APVL
32537	A	ADD NOTE 18: IBC/IRC	11/30/20	JQ



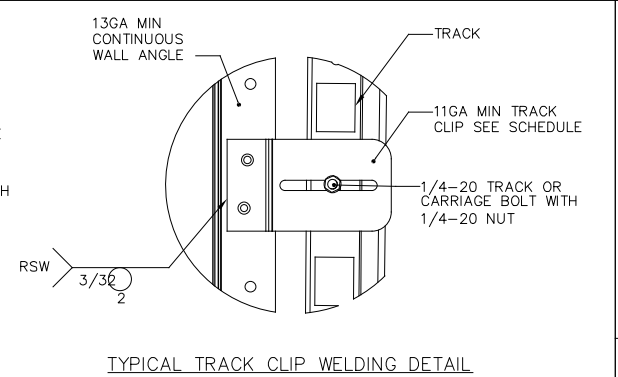
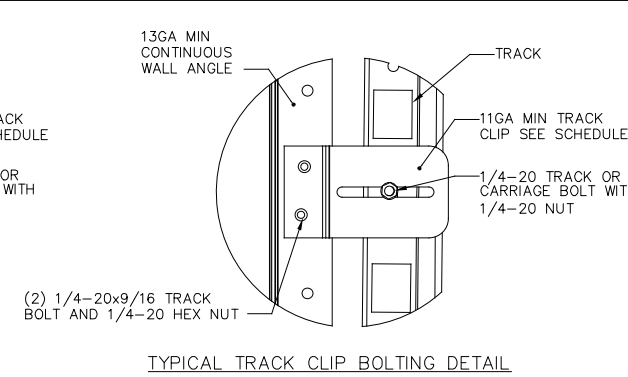
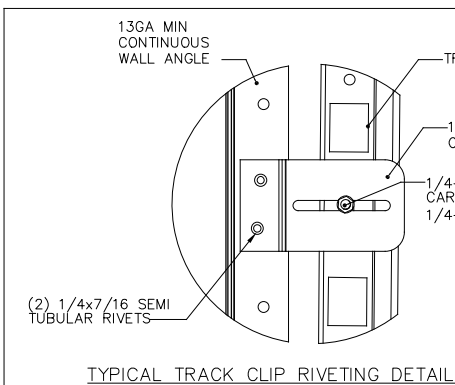
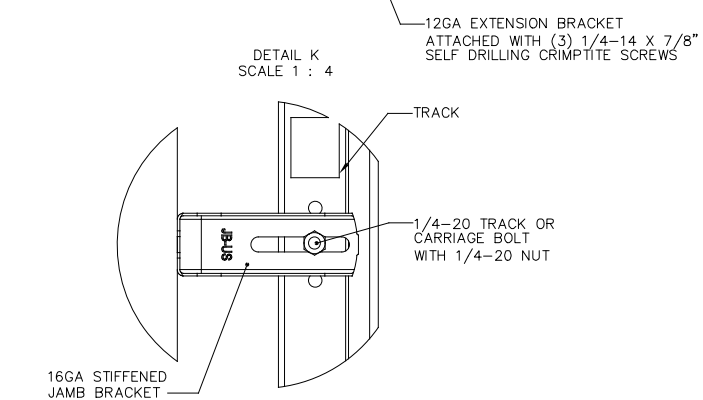
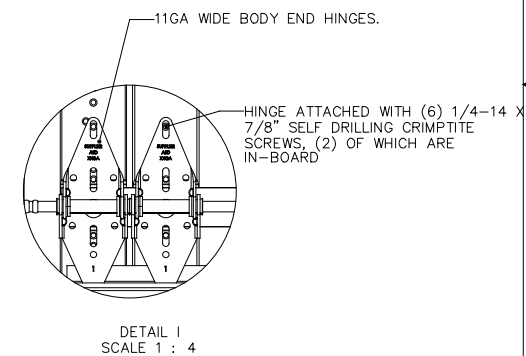
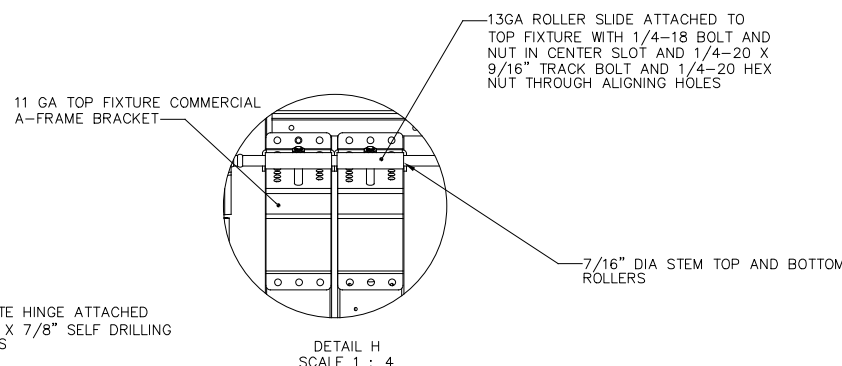
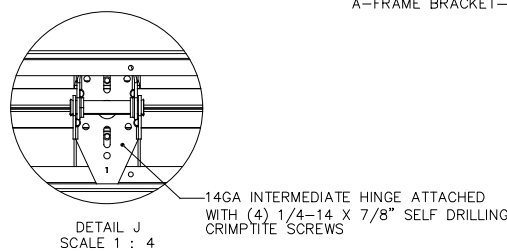
JOHN E. SCATES, PE
 2560 KING ARTHUR BLVD #124-54
 LEWISVILLE, TX 75056
 FL PE 51737 TX PE 56308/F2203
 PROFESSIONAL ENGINEER'S SEAL PROVIDED ONLY FOR VERIFICATION OF WINDLOAD CONSTRUCTION DETAILS.

THIRD ANGLE PROJECTION 	UNLESS OTHERWISE SPECIFIED INTERPRET DIMS & TOLS PER ASME Y14.5M ALL DIMS ARE IN INCHES DO NOT SCALE DIMS CIRCLED WITH SYMBOL ARE CRITICAL TO QUALITY DESIGN FEATURES & MUST MEET APPLICABLE IN-PROCESS INSPECTION STANDARDS.	TOLERANCES: .X = ±.1 .XX = ±.03 .XXX = ±.010 ANGULAR = ±.5° HOLES: < Ø.251 = +.004/-0.003 Ø.251-Ø.500 = +.006/-0.003 > Ø.500 = +.008/-0.003	APPROVALS DATE DRAWN G.CLARK 4-11-19 CHECKED D.KORNISH 2-18-20 APPROVED - - MATERIAL - - FINISH - -		Wayne Dalton GARAGE DOORS PENSACOLA, FLORIDA DESCRIPTION 8000/8100/8200 18'2" MAX WIDTH
			WINDLOAD SPECIFICATION OPTION CODE 1148		
ALL GEOMETRY GOVERNED BY 3D CAD DATABASE:			SCALE 1:12	UOM = EA	SHEET 1 OF 4

NOTES: (UNLESS OTHERWISE SPECIFIED)

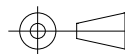


SECTION E - E
SCALE 1 : 4



TYPICAL TRACK AND JAMB FASTENERS DETAIL

THIRD ANGLE PROJECTION



A DIVISION OF OVERHEAD DOOR CORP
3395 ADDISON DRIVE
PENSACOLA, FLORIDA 32514
(850)-474-9890

UNLESS OTHERWISE SPECIFIED
INTERPRET DIMS & TOLS PER ASME Y14.5M
ALL DIMS ARE IN INCHES
DO NOT SCALE
DIMS CIRCLED WITH SYMBOL ARE CRITICAL TO QUALITY DESIGN FEATURES & MUST MEET APPLICABLE IN-PROCESS INSPECTION STANDARDS.

TOLERANCES:
.X = ±.1
.XX = ±.03
.XXX = ±.010
ANGULAR = ±.5°
HOLES:
< Ø.251 = +.004/-0.003
Ø.251-Ø.500 = +.006/-0.003
> Ø.500 = +.008/-0.003

APPROVALS DATE
DRAWN G.CLARK 4-11-19
CHECKED D.KORNISH 2-18-20
APPROVED - -
MATERIAL - -
FINISH - -
WINDLOAD SPECIFICATION OPTION CODE 1148

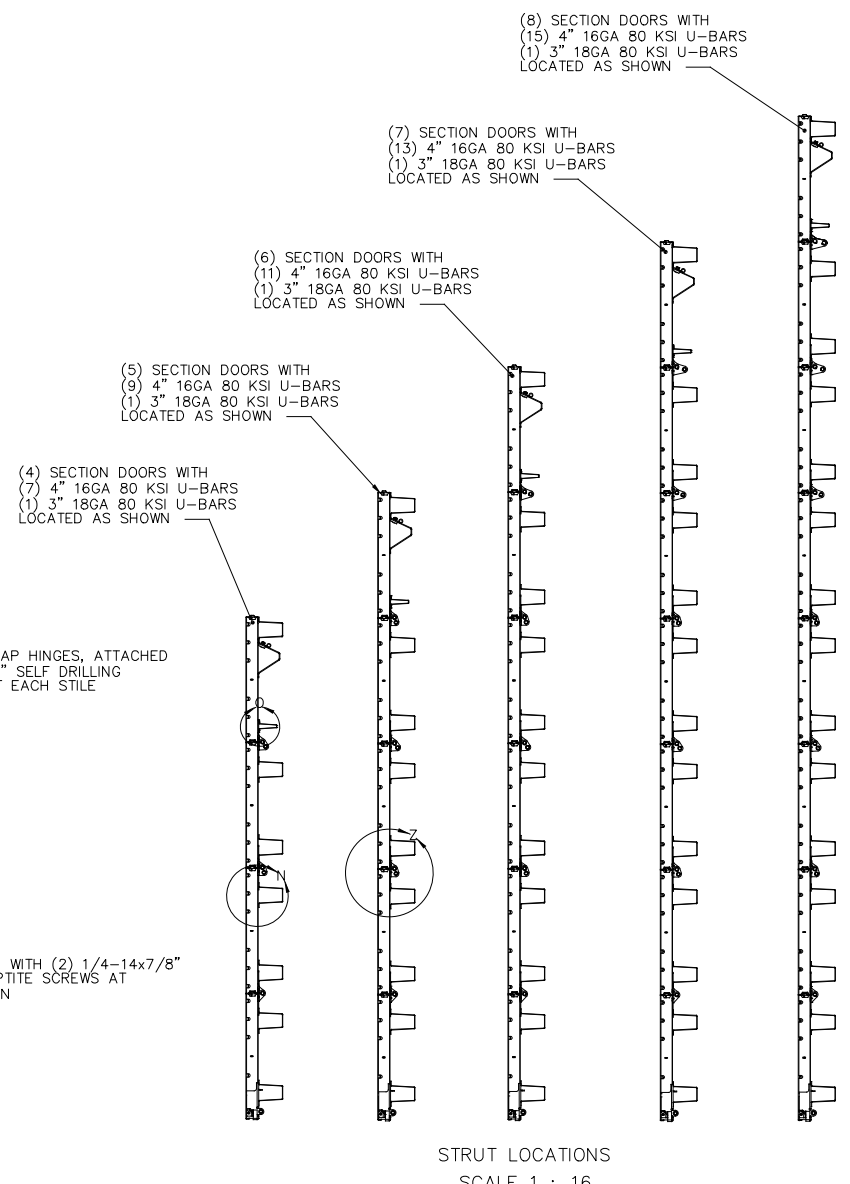
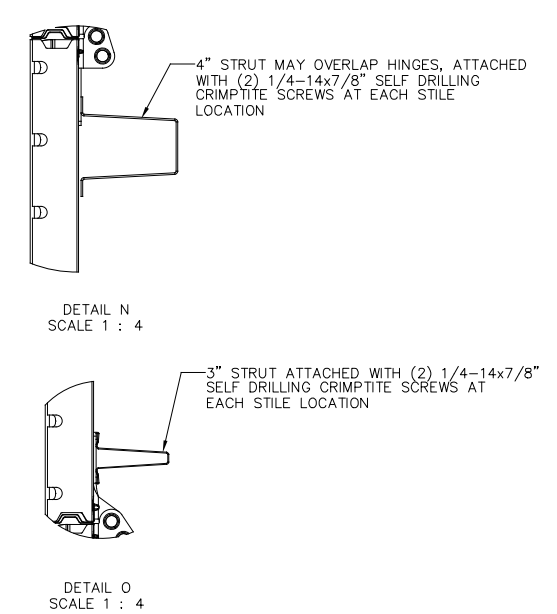
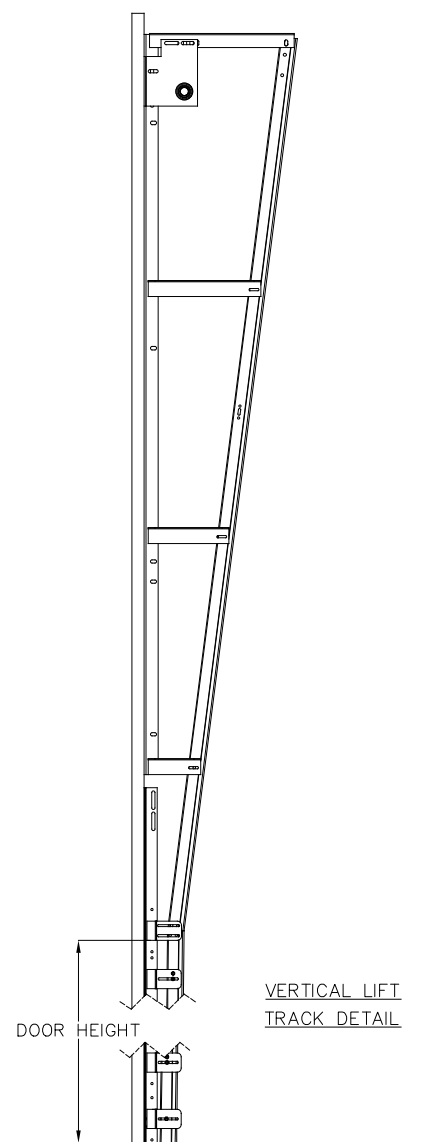
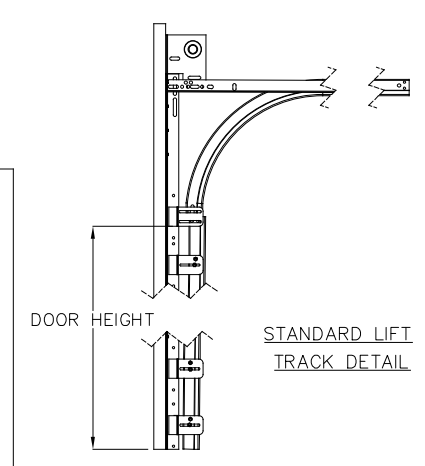
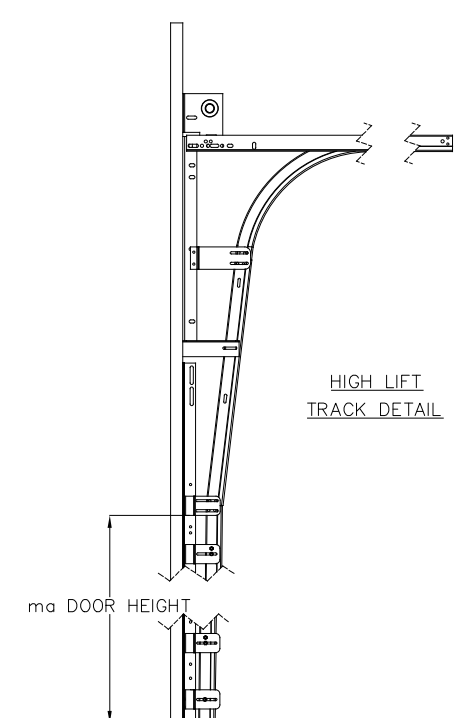
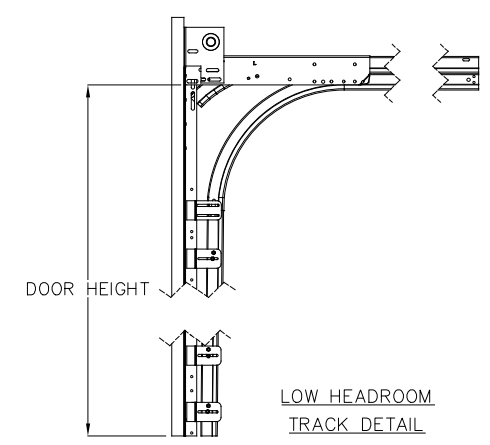
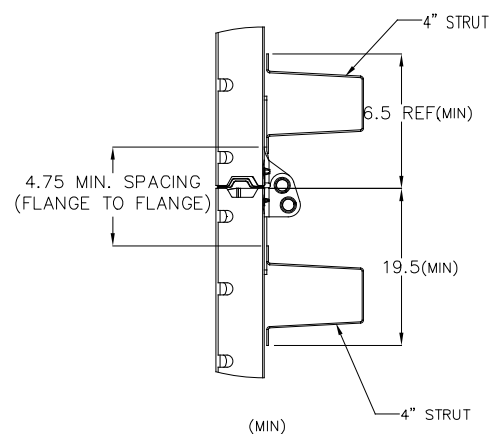
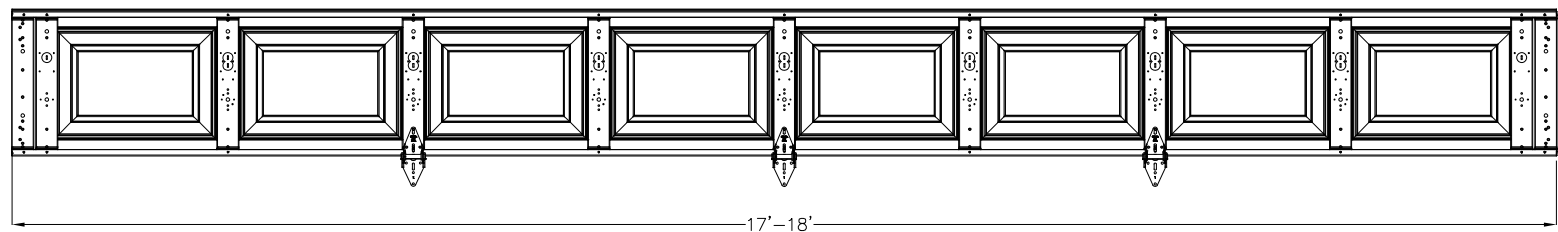
Wayne Dalton GARAGE DOORS PENSACOLA, FLORIDA
DESCRIPTION
8000/8100/8200 18'2" MAX WIDTH
SIZE DWG NO. REV
D D-365184 A

ALL GEOMETRY GOVERNED BY 3D CAD DATABASE:

SCALE 1:12 UOM = EA SHEET 2 OF 4

NOTES: (UNLESS OTHERWISE SPECIFIED)

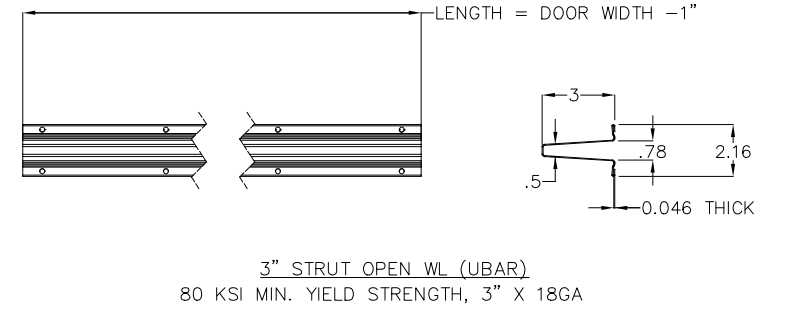
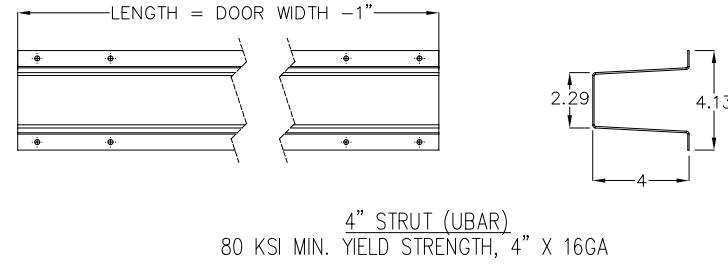
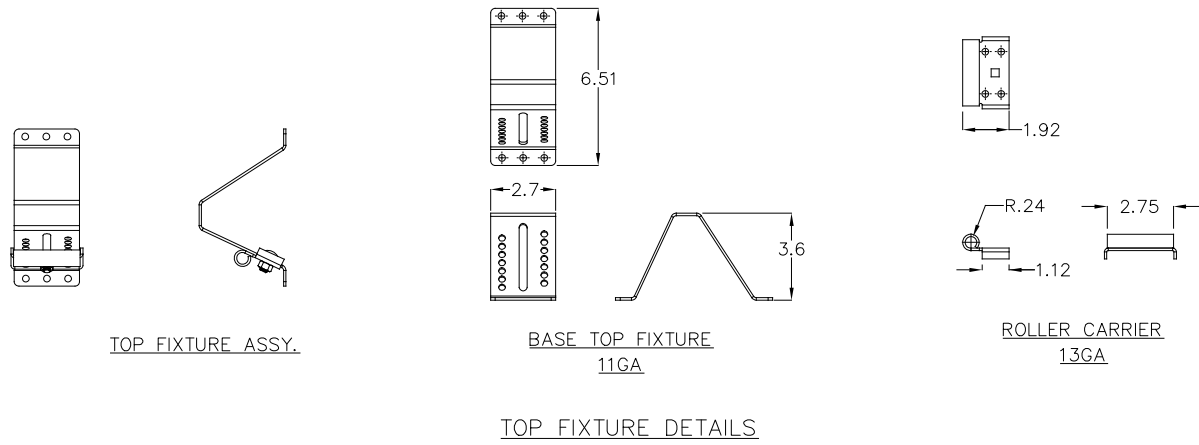
CENTER STILE AND INTERMEDIATE HINGE LOCATIONS



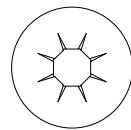
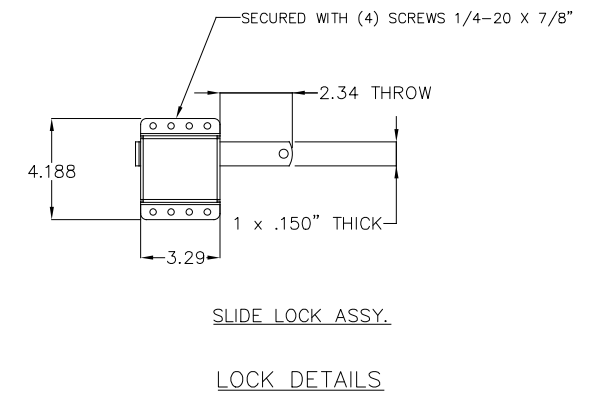
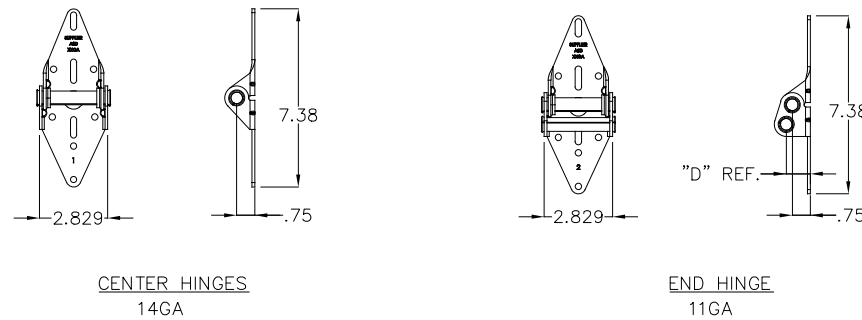
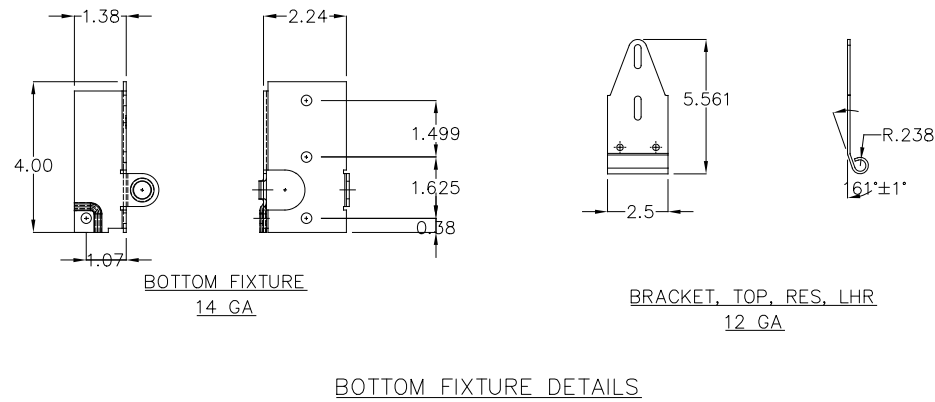
JOHN E. SCATES, PE
 2560 KING ARTHUR BLVD #124-54
 LEWISVILLE, TX 75056
 FL PE 51737 TX PE 56308/F2203
 PROFESSIONAL ENGINEER'S SEAL PROVIDED ONLY FOR
 VERIFICATION OF WINDLOAD CONSTRUCTION DETAILS.

THIRD ANGLE PROJECTION 	UNLESS OTHERWISE SPECIFIED INTERPRET DIMS & TOLS PER ASME Y14.5M ALL DIMS ARE IN INCHES DO NOT SCALE DIMS CIRCLED WITH SYMBOL ARE CRITICAL TO QUALITY DESIGN FEATURES & MUST MEET APPLICABLE IN-PROCESS INSPECTION STANDARDS.		APPROVALS DATE DRAWN G.CLARK 4-11-19 CHECKED D.KORNISH 2-18-20 APPROVED - - MATERIAL - - FINISH - -		WAYNE DALTON GARAGE DOORS PENSACOLA, FLORIDA DESCRIPTION 8000/8100/8200 18'2" MAX WIDTH			
	TOLERANCES: .X = ±.1 .XX = ±.03 .XXX = ±.010 ANGULAR = ±.5 ° HOLES: $\varnothing.251$ = +.004/-0.003 $\varnothing.251-\varnothing.500$ = +.006/-0.003 > $\varnothing.500$ = +.008/-0.003		WINDLOAD SPECIFICATION OPTION CODE 1148		SIZE D	DWG NO. D-365184	REV A	
ALL GEOMETRY GOVERNED BY 3D CAD DATABASE:			SCALE 1:12		UOM = EA		SHEET 3 OF 4	

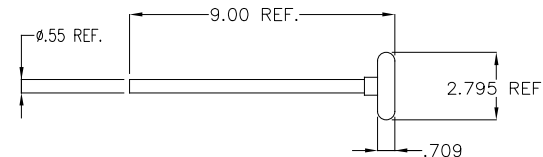
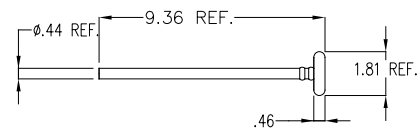
NOTES: (UNLESS OTHERWISE SPECIFIED)
 1. FOR DIMENSIONS AND NOTE REFERENCES, REFER TO INDIVIDUAL DRAWINGS.



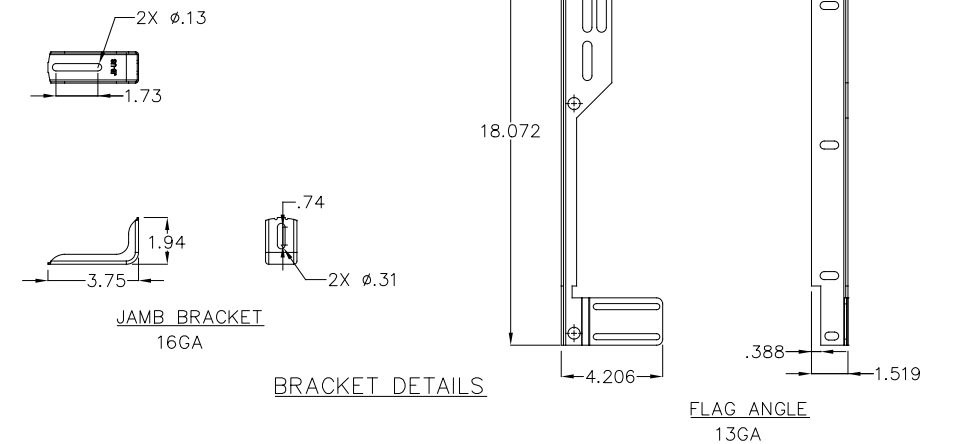
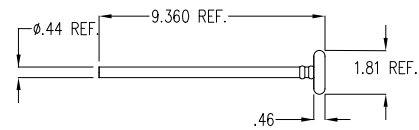
STRUT DETAILS



7/16" STEEL PUSHNUTS



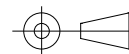
ROLLER STEM ASSY DETAILS (WITH PUSH NUTS)



JOHN E. SCATES, PE
 2560 KING ARTHUR BLVD #124-54
 LEWISVILLE, TX 75056
 FL PE 51737 TX PE 56308/F2203

PROFESSIONAL ENGINEER'S SEAL PROVIDED ONLY FOR
 VERIFICATION OF WINDLOAD CONSTRUCTION DETAILS.

THIRD ANGLE PROJECTION



A DIVISION OF OVERHEAD
 DOOR CORP
 3395 ADDISON DRIVE
 PENSACOLA, FLORIDA 32514
 (850)-474-9890

UNLESS OTHERWISE SPECIFIED

INTERPRET DIMS & TOLS
 PER ASME Y14.5M
 ALL DIMS ARE IN
 INCHES
 DO NOT SCALE

DIMS CIRCLED WITH SYMBOL ARE CRITICAL TO QUALITY DESIGN
 FEATURES & MUST MEET APPLICABLE
 IN-PROCESS INSPECTION STANDARDS.

TOLERANCES:

.X = ±.1
 .XX = ±.03
 .XXX = ±.010
 ANGULAR = ±.5°

HOLES:

< Ø.251 = +.004/-0.003
 Ø.251-Ø.500 = +.006/-0.003
 > Ø.500 = +.008/-0.003

ALL GEOMETRY GOVERNED BY 3D CAD DATABASE:

APPROVALS DATE

DRAWN G.CLARK 4-11-19
 CHECKED D.KORNISH 2-18-20
 APPROVED - -
 MATERIAL - -
 FINISH - -

WINDLOAD SPECIFICATION
 OPTION CODE 1148

Wayne Dalton GARAGE DOORS PENSACOLA, FLORIDA

DESCRIPTION
 8000/8100/8200 18'2" MAX WIDTH

SIZE DWG NO. REV
 D D-365184 A

SCALE 1:12 UOM = EA SHEET 4 OF 4