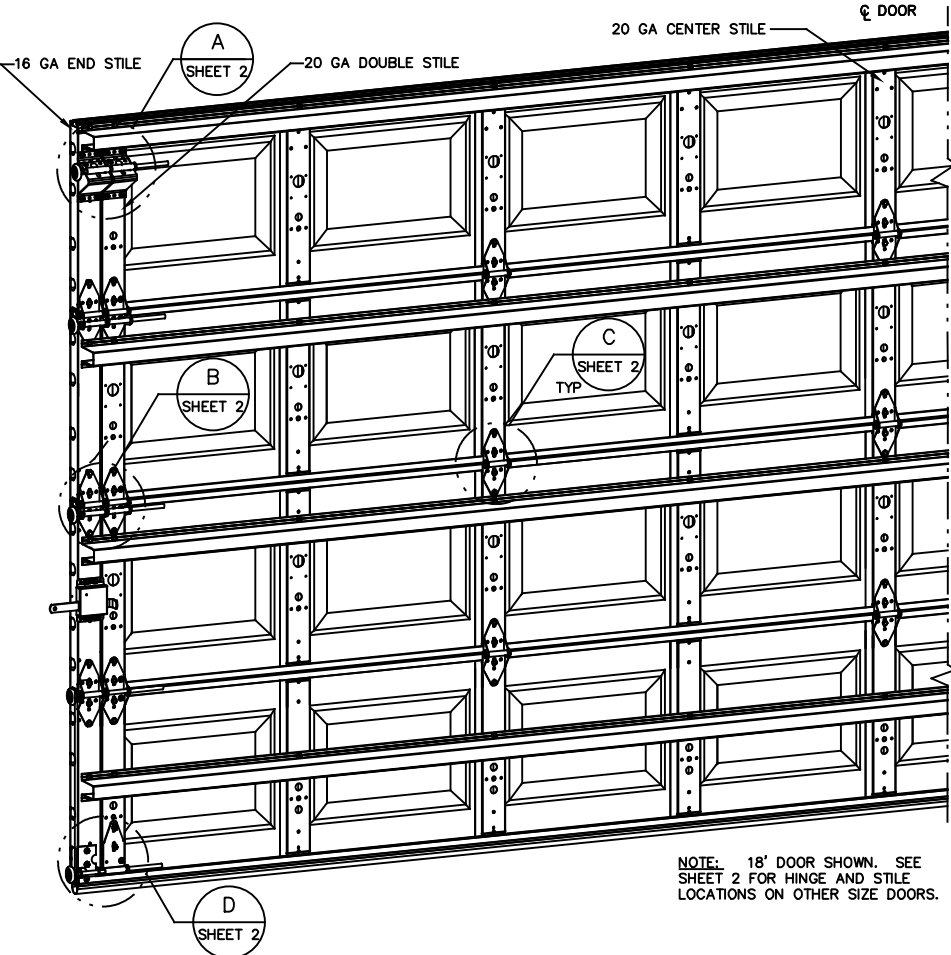
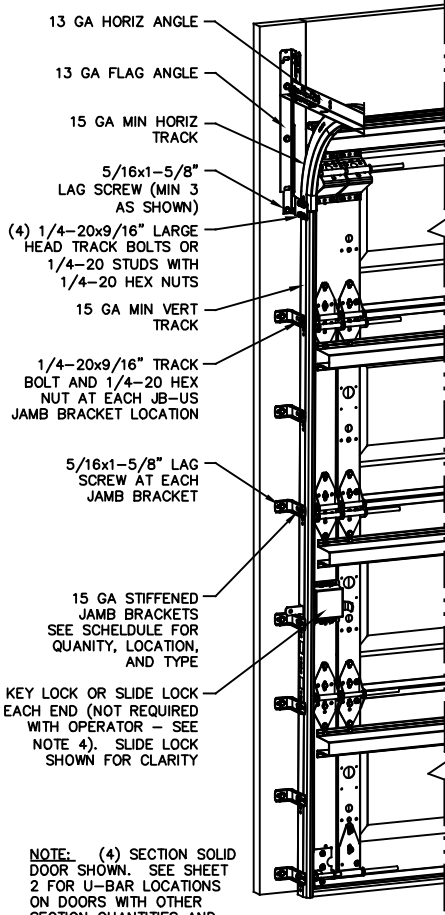


NOTES:

- NON IMPACT GLAZING OPTIONS:
16 X 9.75 CLEAR OPENING
36.75 X 9.75 CLEAR OPENING
GLAZING SSB (0.090") MINIMUM. 36.75 X 9.75
OPENING REQUIRES EXTRA 3" X 18 GA U BAR. MAY
INCLUDE DECORATIVE INSERTS INSTALLED IN TOP OR
INTERMEDIATE SECTION. NOT AVAILABLE IN MORE
THAN ONE SECTION. DOES NOT SATISFY
WINDBORNE-DEBRIS.
- IMPACT RESISTANT GLAZING OPTION- IMPACT
RESISTANT GLAZING SYSTEM MAY BE INSTALLED IN
TOP OR INTERMEDIATE SECTION (WITH OR WITHOUT
DECORATIVE INSERTS). GLAZING SHALL BE 1/4"
POLYCARBONATE. MAXIMUM GLAZING DIMENSIONS
SHALL BE 11" X 17" CUTOUT, FASTENED WITH #8 X
1" SMS: 3X ALONG THE HORIZONTAL AND 2X ALONG
THE VERTICAL. SEE DETAIL E ON SHEET 2 FOR
ASSEMBLY DETAILS.
- VINYL OR WOOD DOOR STOP NAILED A MAXIMUM
OF 6" O.C. MUST OVERLAP TOP AND BOTH ENDS OF
PANELS MINIMUM 7/16" TO MEET NEGATIVE
PRESSURES.
- KEY LOCK, SLIDE LOCKS, OR OPERATOR REQUIRED.
- LOUVER OPTION - .032" MINIMUM LOUVERS IN
MOLDED FRAMES SCREWED TOGETHER WITH A
MINIMUM OF (10) #8x1" SCREWS INSTALLED IN THE
BOTTOM SECTION. LOUVERS ARE NOT IMPACT
RESISTANT AND DO NOT MEET THE REQUIREMENTS
FOR WIND-BORNE DEBRIS REGIONS.
- SECTION STEEL TO HAVE A MINIMUM 25 GA
THICKNESS.
- THE DESIGN OF THE SUPPORTING STRUCTURAL
ELEMENTS SHALL BE THE RESPONSIBILITY OF THE
PROFESSIONAL OF RECORD FOR THE BUILDING OR
STRUCTURE AND IN ACCORDANCE WITH CURRENT
BUILDING CODES FOR THE LOADS LISTED ON THIS
DRAWING.
- DOOR JAMB TO BE MINIMUM 2x6, STRUCTURAL
GRADE SOUTHERN PINE. REFER TO JAMB CONNECTION
SUPPLEMENT FOR ATTACHMENT TO SUPPORTING
STRUCTURE.
- FOR LOW HEAD ROOM LIFT CONDITIONS, TOP
BRACKET SHALL BE (2) 13 GA LHR 7/4 TOP
BRACKET WITH A MINIMUM OF (3) 1/4-14x7/8" SELF
DRILLING CRIMPITE SCREWS IN LIEU OF THE
BRACKET SHOWN ON THIS DRAWING. U-BAR ON TOP
SECTION SHALL BE INSTALLED ON TOP OF LHR TOP
BRACKETS.



REVISIONS
PO NEW DRAWING, PER ER 31052 ESC 10/16/18
P1 ADDED 4" STRUTS INSTEAD OF 3" U-BARS ESC 11/12/18

NOTE: (4) SECTION SOLID DOOR SHOWN. SEE SHEET 2 FOR U-BAR LOCATIONS ON DOORS WITH OTHER SECTION QUANTITIES AND SEE NOTES 1 AND 2 THIS SHEET FOR GLAZING OPTIONS.

NOTE: 18" DOOR SHOWN. SEE SHEET 2 FOR HINGE AND STILE LOCATIONS ON OTHER SIZE DOORS.

SUPERIMPOSED DESIGN PRESSURE LOADS ON SUPPORTING STRUCTURE

DOOR WIDTH	DOOR HEIGHT	UNIFORM LOAD EACH JAMB (PLF)
17'-0"	ALL	+223.6/-250.0
18'-0"	ALL	+236.7/-263.7

JAMB BRACKET SCHEDULE

DOOR HEIGHT	NO. OF SECTIONS	NO. OF JAMB BRACKETS (EACH JAMB)	LOCATION OF CENTERLINE OF JAMB BRACKETS MEASURED FROM BOTTOM OF TRACK (ALL DIMENSIONS ± 2")
6'-6"	4	7	2" (JB-US), 10" (JB-US), 21-3/4" (JB-US), 30-1/2" (JB-US), 39" (JB-US), 48" (JB-US), 57-1/4" (JB-US)
7'-0"	4	7	2" (JB-US), 10" (JB-US), 21-3/4" (JB-US), 30-1/2" (JB-US), 42" (JB-US), 52-1/2" (JB-US), 63-1/4" (JB-US)
7'-6"	5	9	2" (JB-US), 10" (JB-US), 18-3/4" (JB-US), 30-1/2" (JB-US), 36" (JB-US), 45" (JB-US), 54-1/4" (JB-US), 63" (JB-US), 74-1/2" (JB-US)
8'-0"	5	9	2" (JB-US), 10" (JB-US), 21-3/4" (JB-US), 30-1/2" (JB-US), 39" (JB-US), 48" (JB-US), 57-1/2" (JB-US), 66" (JB-US), 75-1/2" (JB-US)
> 8'-0"			SEE NOTE BELOW

NOTE: (JB-US) FOLLOWING DIMENSION DENOTES SLOTTED JAMB BRACKET ATTACHED TO TRACK WITH 1/4-20x9/16" TRACK BOLT AND NUT AS SHOWN ABOVE.
ALL DOORS GREATER THAN 8' IN HEIGHT REQUIRE USE OF CONTINUOUS WALL ANGLE. SEE SUPPLEMENT TRACK CHART FOR DETAILS.



A DIVISION OF OVERHEAD DOOR CORP
3395 ADDISON DRIVE
PENSACOLA, FLORIDA 32514
(850) 474-9890

STATIC PRESSURE RATINGS	APPROVED SIZES	SCALE: N.T.S.	SIZE: A
DESIGN (PSF): +26.30/-29.30	MAX WIDTH: 18'-0"	DATE	NAME
TEST (PSF): +39.45/-43.95	MAX HEIGHT: 14'-0"	DRAWN	ESC
IMPACT/CYCLIC RATED (YES/NO): YES	MAX SECTION HEIGHT: 21"	CHECKED	DJK
MODELS 8000/8100/8200		SHEET 1 OF 2	
WINDLOAD SPECIFICATION OPTION CODE 1145		DRAWING PART NO.	REV.
		364240	P1

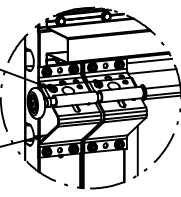
JOHN E. SCATES, PE
2560 KING ARTHUR BLVD #124-54
LEWISVILLE, TX 75056
FL PE 51737
TX PE 56308/F2203

PROFESSIONAL ENGINEER'S SEAL PROVIDED ONLY FOR VERIFICATION OF WINDLOAD CONSTRUCTION DETAILS.

REVISIONS

PO NEW DRAWING, PER ER 31052 ESC 10/16/18
 P1 ADDED 4" STRUTS INSTEAD OF 3" U-BARS ESC 11/12/18

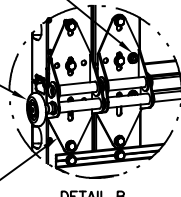
13 GA ROLLER SLIDE ATTACHED TO BRACKET WITH 5/16-18 BOLT & NUT IN CENTER SLOT AND 1/4-20x9/16" TRACK BOLT & 1/4-20 HEX NUT THROUGH ANY TWO ALIGNING HOLES



(2) 13 GA COMMERCIAL 'A' FRAME TOP BRACKETS EACH ATTACHED WITH (4) 1/4-14x7/8" SELF DRILLING CRIMPTITE SCREWS

DETAIL A

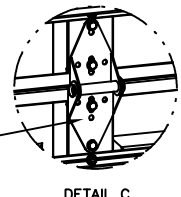
ADD (2) 1/4-14x7/8" SELF DRILLING CRIMPTITE SCREWS (INSIDE OF EACH INSIDE END HINGE)



DETAIL B

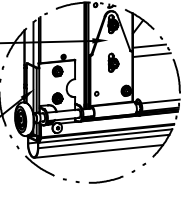
2" STEEL ROLLER WITH 9" GRADE 1144 OR EQUIVALENT STEM AND 7/16" PUSHNUT AT EACH ROLLER LOCATION. 1/4" MAX BETWEEN PUSHNUT AND BRACKET OR HINGE.

#1 HINGE IS 14 GA
 #2 HINGE IS 13 GA
 #3 HINGE (AND ALL ABOVE) ARE 13 GA WIDE BODY END HINGE ATTACHED WITH (4) 1/4-14x5/8" SELF TAPPING SCREWS



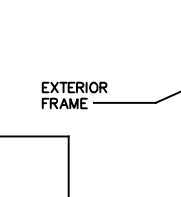
DETAIL C

14 GA WIDE BODY INTERMEDIATE HINGE ATTACHED WITH (4) 1/4-14x5/8" SELF TAPPING SCREWS



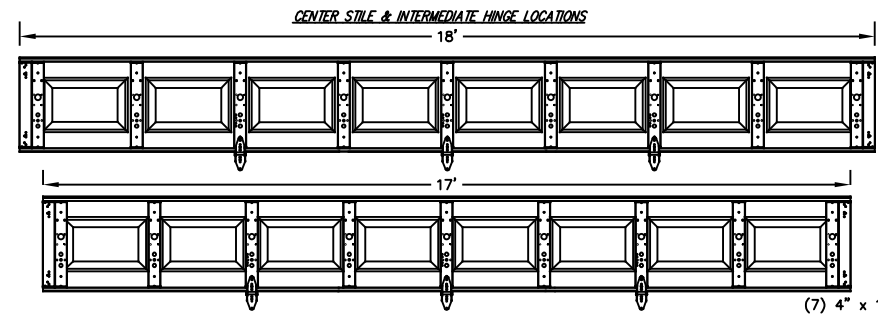
DETAIL D

12 GA EXTENSION BRACKET ATTACHED WITH (3) 1/4-14x7/8" SELF DRILLING CRIMPTITE SCREWS THROUGH STRUT AND BOTTOM BRACKET AND (1) 1/4-14x5/8" SELF DRILLING RED SCREW



DETAIL E

14 GA BOTTOM BRACKET ATTACHED WITH (2) 1/4-14x7/8" SELF DRILLING CRIMPTITE SCREWS THROUGH STRUT AND BOTTOM BRACKET AND (1) 1/4-14x5/8" SELF DRILLING RED SCREW

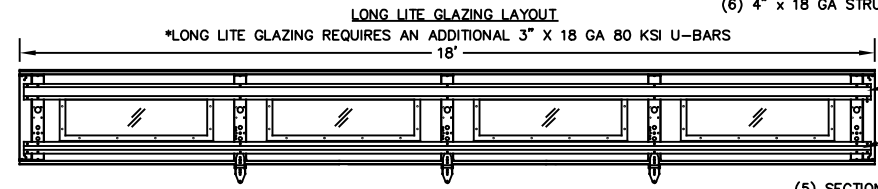


U-BAR LOCATIONS

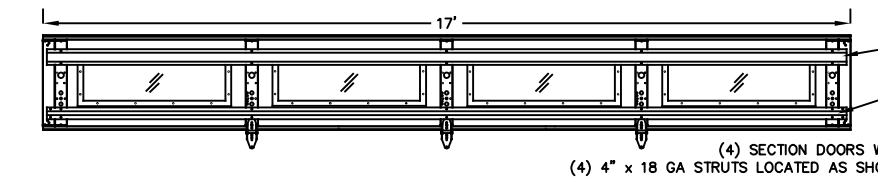
(8) SECTION DOORS WITH (8) 4" x 18 GA STRUTS LOCATED AS SHOWN

(7) SECTION DOORS WITH (7) 4" x 18 GA STRUTS LOCATED AS SHOWN

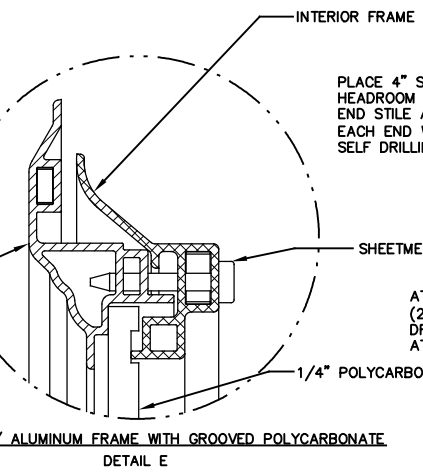
(6) SECTION DOORS WITH (6) 4" x 18 GA STRUTS LOCATED AS SHOWN



(5) SECTION DOORS WITH (5) 4" x 18 GA STRUTS LOCATED AS SHOWN

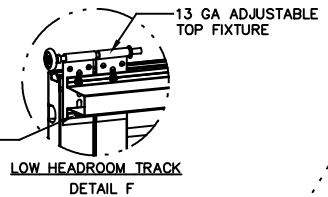


(4) SECTION DOORS WITH (4) 4" x 18 GA STRUTS LOCATED AS SHOWN



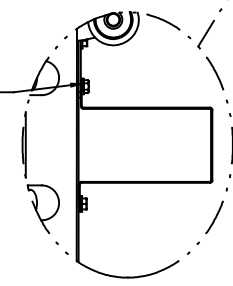
IMPACT WINDOW / ALUMINUM FRAME WITH GROOVED POLYCARBONATE
 DETAIL E

PLACE 4" STRUT OVER LOW HEADROOM TRACK ATTACH THRU END STILE AND CENTER STILE AT EACH END WITH (4) 1/4-14x7/8" SELF DRILLING CRIMPTITE SCREWS.

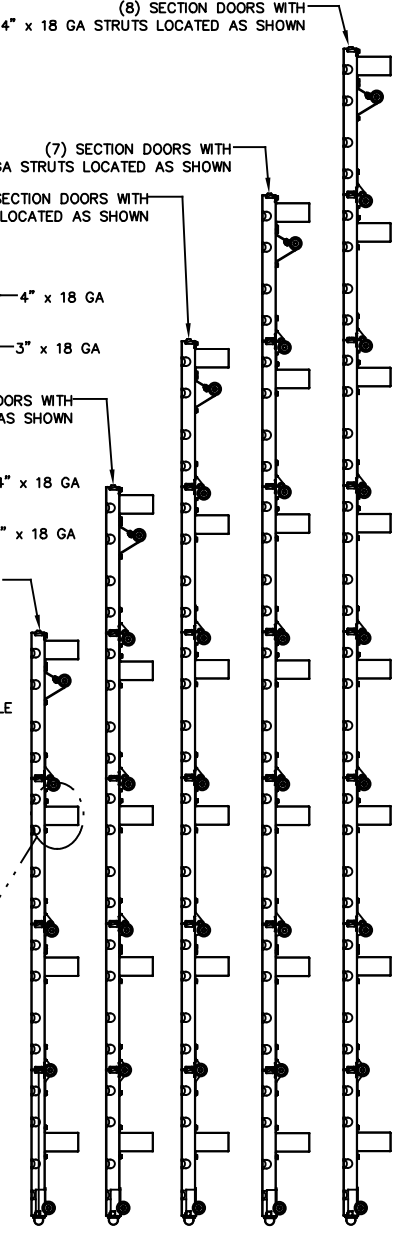


LOW HEADROOM TRACK
 DETAIL F

ATTACH U-BAR WITH (2) 1/4-14x7/8" SELF DRILLING CRIMPTITE SCREWS AT EACH STILE LOCATION, TYP.



DETAIL G



Wayne Dalton
 GARAGE DOORS™

A DIVISION OF OVERHEAD DOOR CORP.
 3395 ADDISON DRIVE
 PENSACOLA, FLORIDA 32514
 (850) 474-9890

STATIC PRESSURE RATINGS		APPROVED SIZES		SCALE: N.T.S.		SIZE: A	
DESIGN (PSF):	+26.30/-29.30	MAX WIDTH:	18'-0"	DATE		NAME	
TEST (PSF):	+39.45/-43.95	MAX HEIGHT:	14'-0"	DRAWN	10/16/18	ESC	
IMPACT/CYCLIC RATED (YES/NO):	YES	MAX SECTION HEIGHT:	21"	CHECKED	10/16/18	DJK	
MODELS 8000/8100/8200				SHEET 2 OF 2			
WINDLOAD SPECIFICATION OPTION CODE 1145				DRAWING PART NO.		REV.	
				364240		P1	

JOHN E. SCATES, PE
 2560 KING ARTHUR BLVD #124-54
 LEWISVILLE, TX 75056
 FL PE 51737
 TX PE 56308/F2203

PROFESSIONAL ENGINEER'S SEAL PROVIDED ONLY FOR VERIFICATION OF WINDLOAD CONSTRUCTION DETAILS.