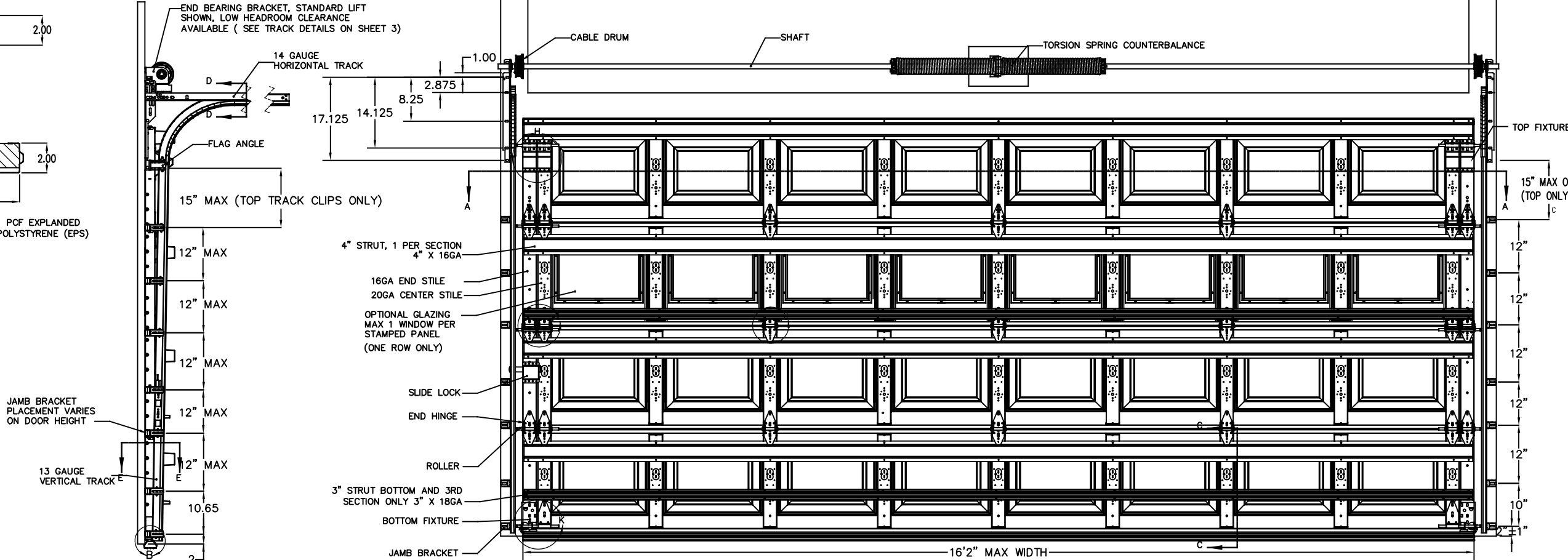
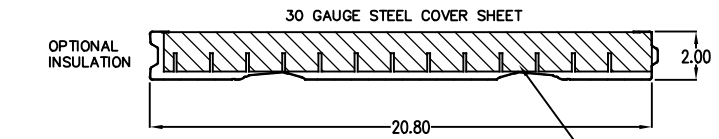
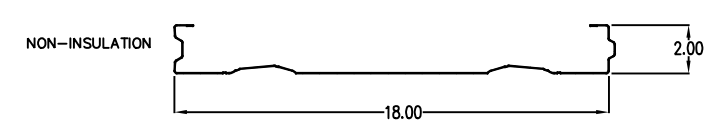
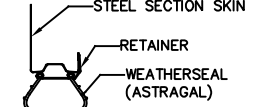
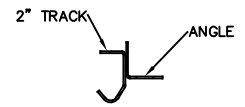
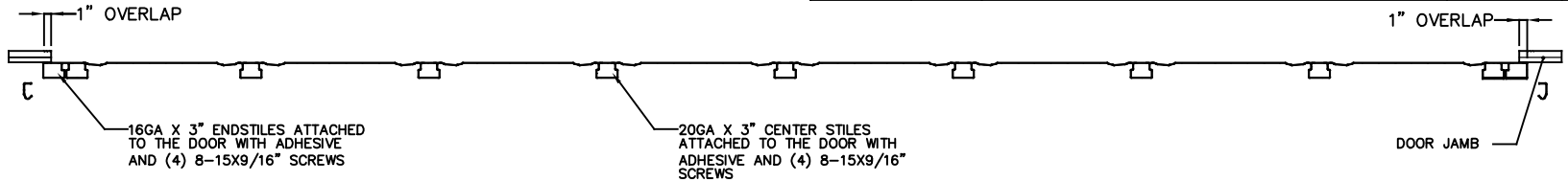


NOTES: (UNLESS OTHERWISE SPECIFIED)

- RATED DESIGN LOAD +46/-52 PSF.
- SECTION HEIGHTS MAY VARY TO CREATE VARIOUS DOOR HEIGHTS, 20.8" MAXIMUM SECTION HEIGHT.
- MINIMUM 1" OVERLAP ON BOTH JAMBS REQUIRED TO MEET NEGATIVE DESIGN PRESSURES.
- TESTED IN ACCORDANCE WITH DADE COUNTY PROTOCOLS TAS 201-94, TAS 202-94, & TAS 203-94.
- DOOR SKIN MATERIAL MUST BE 25,000 PSI MIN. YIELD STRENGTH.
- JAMB LOAD CALCULATIONS:
 $(1/2 \text{ DOOR WIDTH})(1 \text{ FT OF HEIGHT})(\text{DESIGN PRESSURE})$
 $(8.067)(1 \text{ FOOT})(46.00 \text{ AND } -52.00)(371.1/-419.5) \text{ LB.}$
- JAMB FASTENER REQUIREMENTS:
 $F_x = (1/2 \text{ DOOR WIDTH})(1 \text{ FT OF HEIGHT})(\text{DESIGN PRESSURE})$
 $F_x = 371 \text{ LBS.}$
- DOOR SKIN MATERIAL SHALL BE GALVANIZED ACCORDING TO ASTM A-525 TO G90 MIN, WITH BAKED-ON PRIMER, AND BAKED-ON POLYESTER PAINT TOP COAT.
- FOR ANCHORING INTO WOOD, USE ONE 5/16" LAG SCREW PER JAMB BRACKET WITH 1-1/2" EMBEDMENT INTO SOUTHERN PINE (G=0.55) OR BETTER.
- APPROVED INSULATED AND NON-INSULATED: 8000 (25GA), 8100 (25GA), 8200 (25GA), 0.0209" MIN STEEL.
- WELD SLOT ON ANGLE AND 3/32" X 1" LONG ON 12" CENTERS. "IF WELDING MOUNTING OPTION IS CHOSEN."
- LIFT UP MECHANISM—MANUAL, CHAIN LIFT, OR OPERATOR IS NOT PART OF THIS APPROVAL.
- STANDARD LIFT, HIGH LIFT, VERTICAL LIFT, AND LOW HEADROOM TRACK IS AVAILABLE. FOR LOW HEADROOM LIFT CONDITIONS TOP BRACKET SHALL BE 13 GA LHR 7/4 TOP BRACKET WITH A MIN OF (3) 1/4 - 14 X 7/8" SELF DRILLING CRIMPITTE SCREWS IN LIEU OF THE BRACKET SHOWN ON DRAWING. U-BAR ON TOP SECTION SHALL BE INSTALLED ON TOP OF LHR TOP BRACKETS.
- ATTACH STRUTS WITH (2) 1/4-14x7/8" SELF DRILLING CRIMPITTE SCREWS AT ALL STILE LOCATIONS, TYP. LOCATED WITHIN 6" , +/- 3" FROM TOP OF SECTION.
- KEY LOCK, SLIDE LOCK, OR DRAWBAR OPERATOR REQUIRED.
- IMPACT RESISTANT GLAZING SYSTEM MAY BE INSTALLED INTERMEDIATE SECTION OR TOP SECTION. GLAZING SHALL BE 1/4" POLYCARBONATE. 13-3/4" X 20-1/8" MAXIMUM SIZE, FASTENED WITH # 8 X 1" SMS: 3X MIN ALONG THE HORIZONTAL AND 2X MIN ALONG THE VERTICAL. SEE DETAIL F-F ON SHEET 2 FOR ASSEMBLY DETAILS.
- THE DESIGN OF THE SUPPORTING STRUCTURAL ELEMENTS SHALL BE THE RESPONSIBILITY OF THE PROFESSIONAL OF RECORD FOR THE BUILDING OR STRUCTURE AND IN ACCORDANCE WITH CURRENT BUILDING CODES FOR THE LOADS LISTED ON THIS DRAWING.
- DOORS ARE DESIGNED AND MANUFACTURED TO COMPLY WITH REGULATIONS PER BUILDING CODES: 2018 IRC AND 2018 IBC.

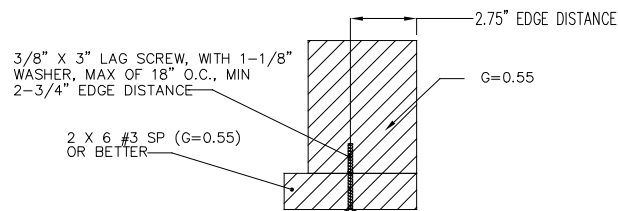
REVISIONS				
ER	REV	DESCRIPTION	DATE	APVL
32537	A	ADD NOTE 18: IBC/IRC	11/30/20	JQ



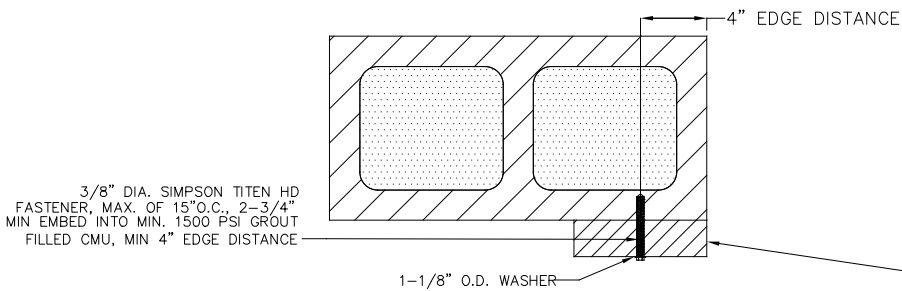
JOHN E. SCATES, PE
 2560 KING ARTHUR BLVD #124-54
 LEWISVILLE, TX 75056
 FL PE 51737 TX PE 56308/F2203
 PROFESSIONAL ENGINEER'S SEAL PROVIDED ONLY FOR
 VERIFICATION OF WINDLOAD CONSTRUCTION DETAILS.

THIRD ANGLE PROJECTION 	UNLESS OTHERWISE SPECIFIED INTERPRET DIMS & TOLS PER ASME Y14.5M ALL DIMS ARE IN INCHES DO NOT SCALE DIMS CIRCLED WITH SYMBOL 'D' ARE CRITICAL TO QUALITY DESIGN FEATURES & MUST MEET APPLICABLE IN-PROCESS INSPECTION STANDARDS.	TOLERANCES: .X = ±.1 .XX = ±.03 .XXX = ±.010 ANGULAR = ±.5° HOLES: $\phi .251 = +.004 / -.003$ $\phi .251 - \phi .500 = +.006 / -.003$ $> \phi .500 = +.008 / -.003$	APPROVALS DRAWN G. CLARK 4-11-19 CHECKED D. KORNISH 2-18-20 APPROVED - - MATERIAL - - FINISH - -	DATE 4-11-19 2-18-20 - - -	Wayne Dalton GARAGE DOORS PENSACOLA, FLORIDA DESCRIPTION 8000/8100/8200 16'2" MAX WIDTH SIZE DWG NO. D-365183 REV A
			WINDLOAD SPECIFICATION OPTION CODE 1128	SCALE 1:12 UOM = EA SHEET 1 OF 4	

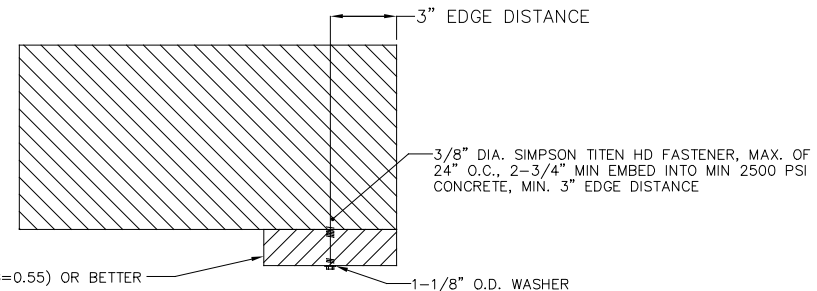
NOTES: (UNLESS OTHERWISE SPECIFIED)



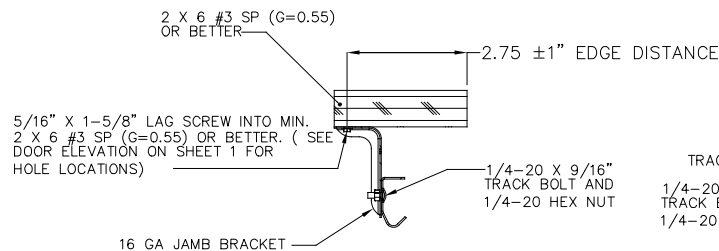
WOOD MOUNTED TO #3 SOUTHERN PINE SUBSTRATE



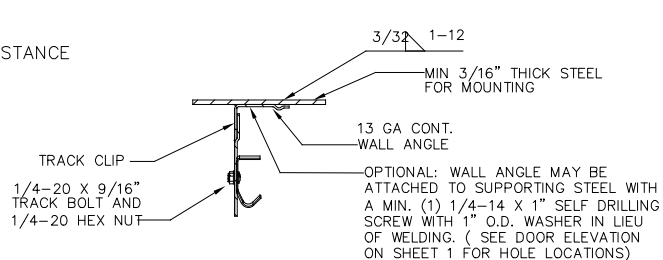
WOOD MOUNTED TO GROUT FILLED MASONRY BLOCK DETAIL



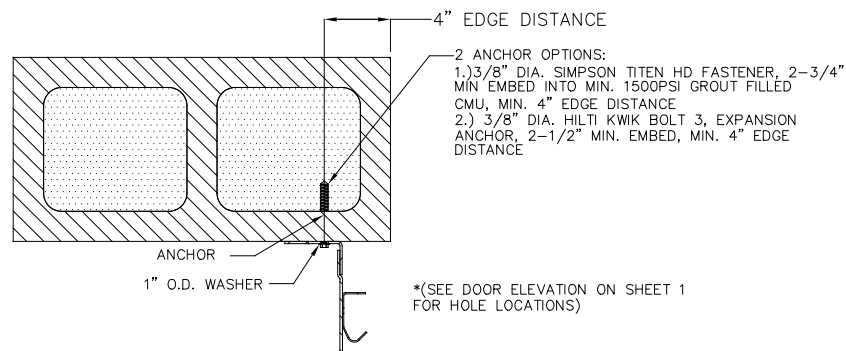
WOOD MOUNTED TO 2500PSI CONCRETE DETAIL



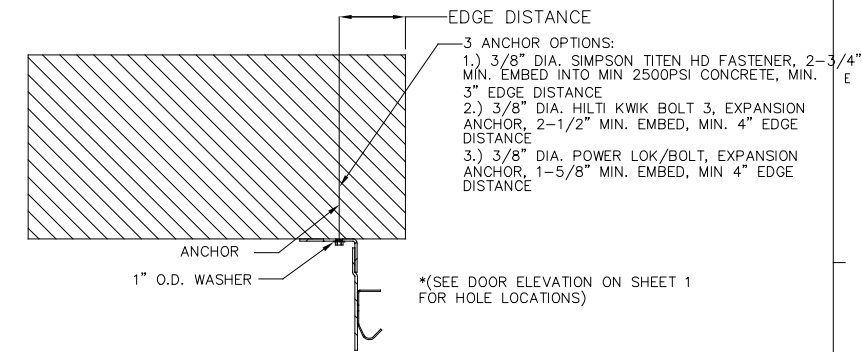
MOUNTING TO WOOD JAMB DETAIL



MOUNTING TO STEEL JAMB DETAIL

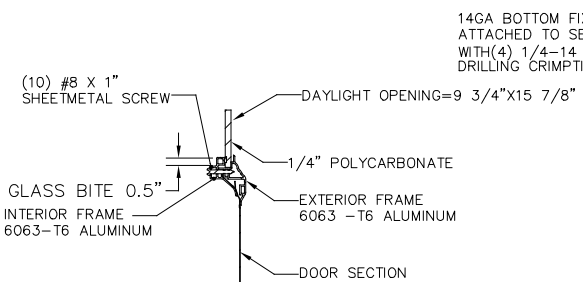


MOUNTING TO GROUT FILLED MASONRY BLOCK DETAIL



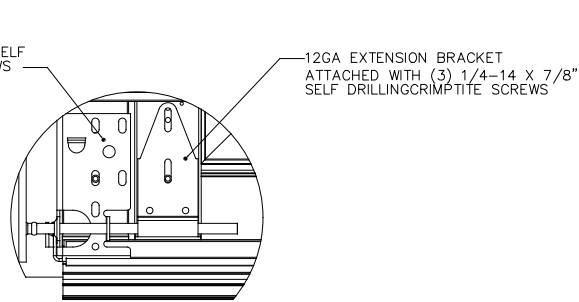
MOUNTING TO 2500PSI CONCRETE DETAIL

SECTION E - E
SCALE 1 : 4

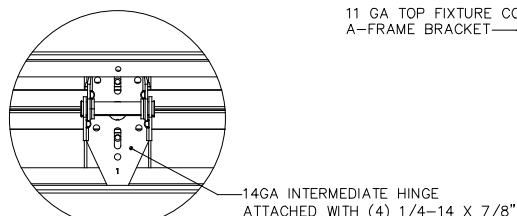


WINDOW DETAIL

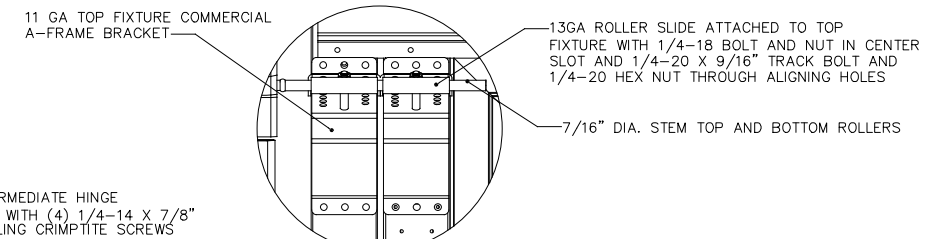
SECTION F - F
SCALE 1 : 4



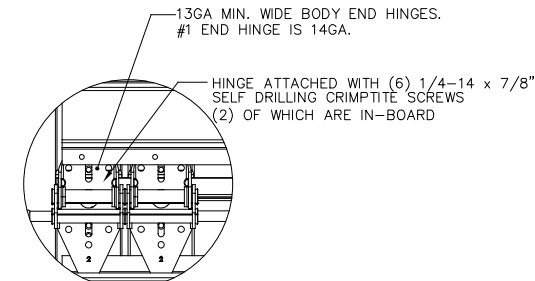
DETAIL K
SCALE 1 : 4



DETAIL J
SCALE 1 : 4

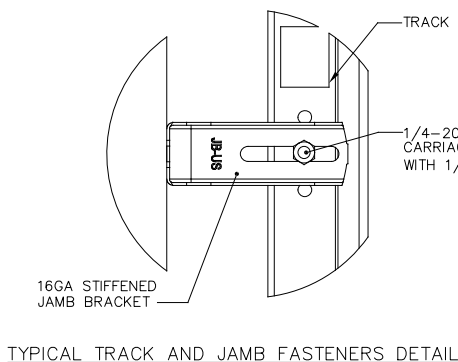


DETAIL H
SCALE 1 : 4

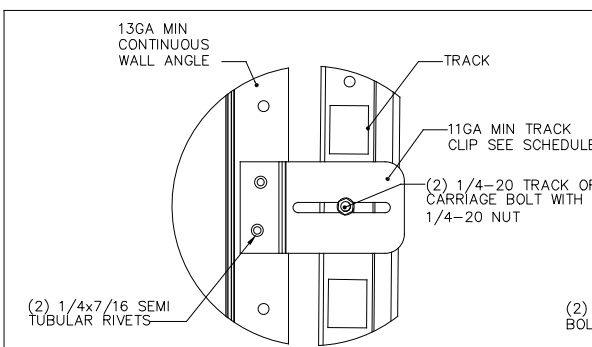


DETAIL K
SCALE 1 : 4

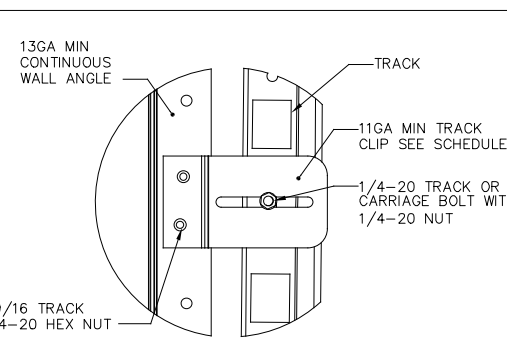
OPTIONAL WALL ANGLE TRACK



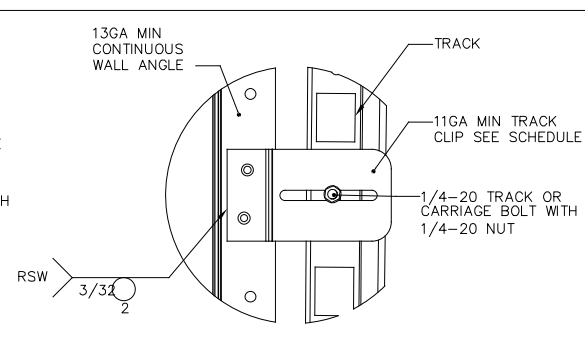
TYPICAL TRACK AND JAMB FASTENERS DETAIL



TYPICAL TRACK CLIP RIVETING DETAIL

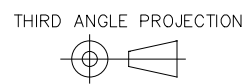


TYPICAL TRACK CLIP BOLTING DETAIL



TYPICAL TRACK CLIP WELDING DETAIL

JOHN E. SCATES, PE
2560 KING ARTHUR BLVD #124-54
LEWISVILLE, TX 75056
FL PE 51737 TX PE 56308/F2203
PROFESSIONAL ENGINEER'S SEAL PROVIDED ONLY FOR VERIFICATION OF WINDLOAD CONSTRUCTION DETAILS.



A DIVISION OF OVERHEAD DOOR CORP
3395 ADDISON DRIVE
PENSACOLA, FLORIDA 32514
(850)-474-9890

UNLESS OTHERWISE SPECIFIED
INTERPRET DIMS & TOLS PER ASME Y14.5M
ALL DIMS ARE IN INCHES
DO NOT SCALE
DIMS CIRCLED WITH SYMBOL ARE CRITICAL TO QUALITY DESIGN FEATURES & MUST MEET APPLICABLE IN-PROCESS INSPECTION STANDARDS.

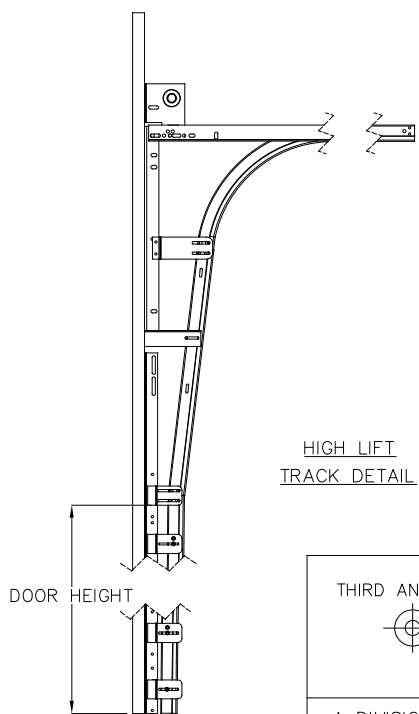
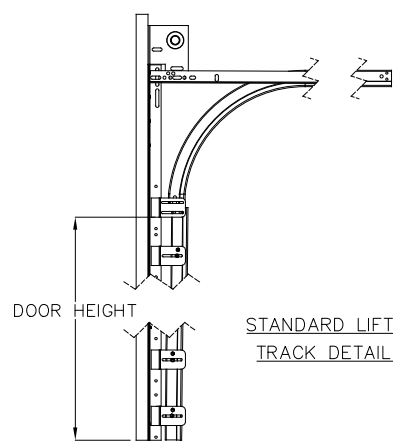
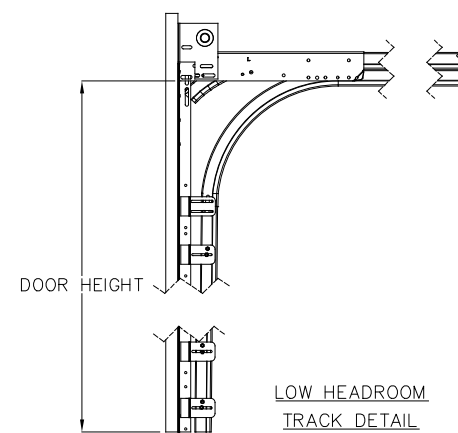
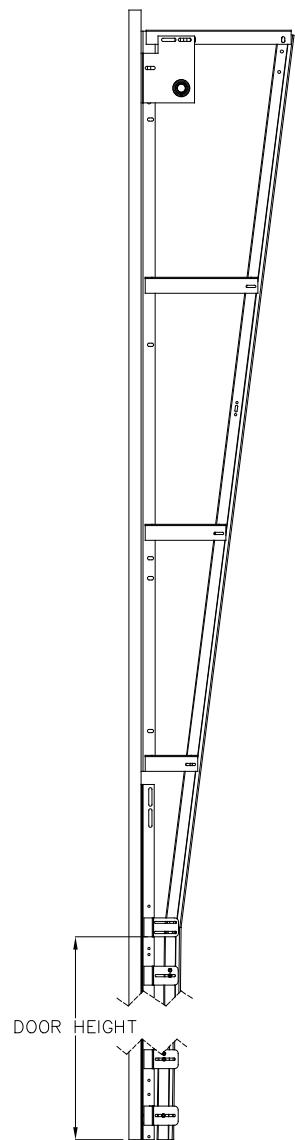
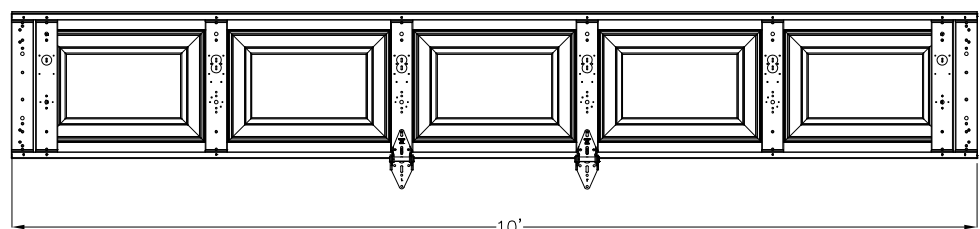
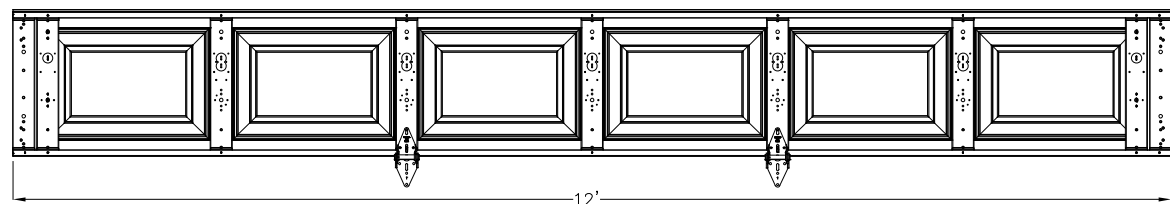
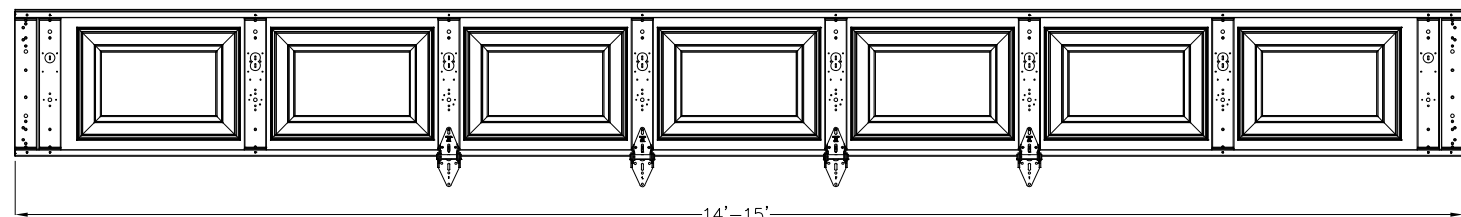
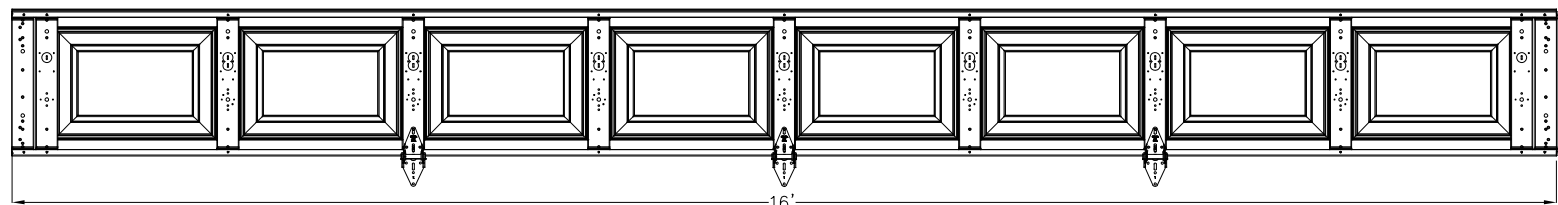
TOLERANCES:
.X = ± .1
.XX = ± .03
.XXX = ± .010
ANGULAR = ± .5 °
HOLES:
< Ø.251 = +.004/- .003
Ø.251-Ø.500 = +.006/- .003
> Ø.500 = +.008/- .003
ALL GEOMETRY GOVERNED BY 3D CAD DATABASE:

APPROVALS	DATE
DRAWN G.CLARK	4-11-19
CHECKED D. KORNISH	2-18-20
APPROVED	-
MATERIAL	-
FINISH	-
WINDLOAD SPECIFICATION OPTION CODE 1128	

Wayne Dalton GARAGE DOORS		PENSACOLA, FLORIDA	
DESCRIPTION 8000/8100/8200 16'2" MAX WIDTH			
SIZE	DWG NO.	REV	
D	D-365183	A	
SCALE 1:12	UOM = EA	SHEET 2 OF 4	

NOTES: (UNLESS OTHERWISE SPECIFIED)

CENTER STILE AND INTERMEDIATE HINGE LOCATIONS



VERTICAL LIFT TRACK DETAIL

LOW HEADROOM TRACK DETAIL

STANDARD LIFT TRACK DETAIL

HIGH LIFT TRACK DETAIL

(8) SECTION DOORS WITH
(8) 4" 16GA 80 KSI U-BARS
(4) 3" 18GA 80 KSI U-BARS
LOCATED AS SHOWN

(7) SECTION DOORS WITH
(7) 4" 16GA 80 KSI U-BARS
(4) 3" 18GA 80 KSI U-BARS
LOCATED AS SHOWN

(6) SECTION DOORS WITH
(6) 4" 16GA 80 KSI U-BARS
(3) 3" 18GA 80 KSI U-BARS
LOCATED AS SHOWN

(5) SECTION DOORS WITH
(5) 4" 16GA 80 KSI U-BARS
(3) 3" 18GA 80 KSI U-BARS
LOCATED AS SHOWN

(4) SECTION DOORS WITH
(4) 4" 16GA 80 KSI U-BARS
(2) 3" 18GA 80 KSI U-BARS
LOCATED AS SHOWN

4" STRUT MAY OVERLAP HINGES, ATTACHED WITH (2) 1/4-14x7/8" SELF DRILLING CRIMPITITE SCREWS AT EACH STILE LOCATION

DETAIL N SCALE 1 : 4

3" STRUT ATTACHED WITH (2) 1/4-14x7/8" SELF DRILLING CRIMPITITE SCREWS AT EACH STILE LOCATION

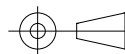
DETAIL O SCALE 1 : 4

STRUT LOCATIONS SCALE 1 : 16

JOHN E. SCATES, PE
2560 KING ARTHUR BLVD #124-54
LEWISVILLE, TX 75056
FL PE 51737 TX PE 56308/F2203

PROFESSIONAL ENGINEER'S SEAL PROVIDED ONLY FOR VERIFICATION OF WINDLOAD CONSTRUCTION DETAILS.

THIRD ANGLE PROJECTION



A DIVISION OF OVERHEAD DOOR CORP
3395 ADDISON DRIVE
PENSACOLA, FLORIDA 32514
(850)-474-9890

UNLESS OTHERWISE SPECIFIED

INTERPRET DIMS & TOLS PER ASME Y14.5M
ALL DIMS ARE IN INCHES
DO NOT SCALE
DIMS CIRCLED WITH SYMBOL ARE CRITICAL TO QUALITY DESIGN FEATURES & MUST MEET APPLICABLE IN-PROCESS INSPECTION STANDARDS.

TOLERANCES:
.X = ±.1
.XX = ±.03
.XXX = ±.010
ANGULAR = ±.5°
HOLES:
< Ø.251 = +.004/-0.003
Ø.251-Ø.500 = +.006/-0.003
> Ø.500 = +.008/-0.003

ALL GEOMETRY GOVERNED BY 3D CAD DATABASE:

APPROVALS	DATE
DRAWN G.CLARK	4-11-19
CHECKED D. KORNISH	2-18-20
APPROVED -	-
MATERIAL -	-
FINISH -	-

WINDLOAD SPECIFICATION OPTION CODE 1128	SIZE D	DWG NO. D-365183	REV A
--	-----------	---------------------	----------

Wayne Dalton GARAGE DOORS PENSACOLA, FLORIDA

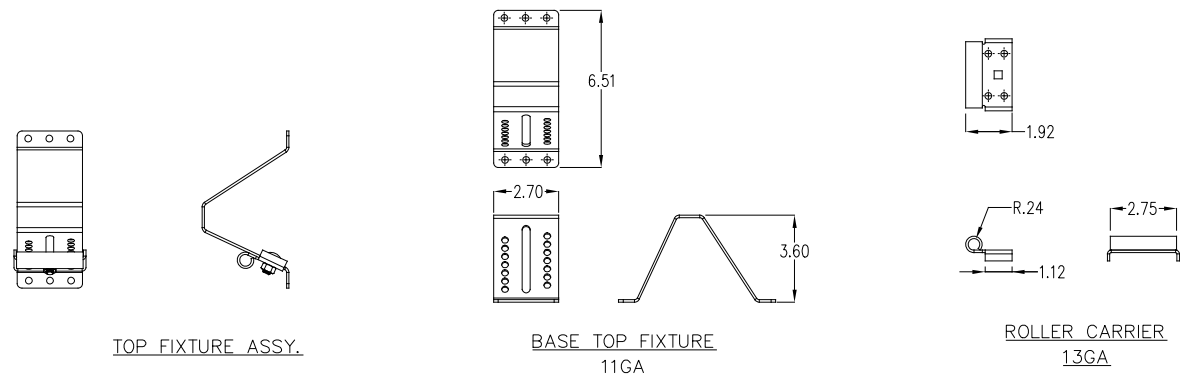
DESCRIPTION
8000/8100/8200 16'2" MAX WIDTH

SCALE 1:12 UOM = EA SHEET 3 OF 4

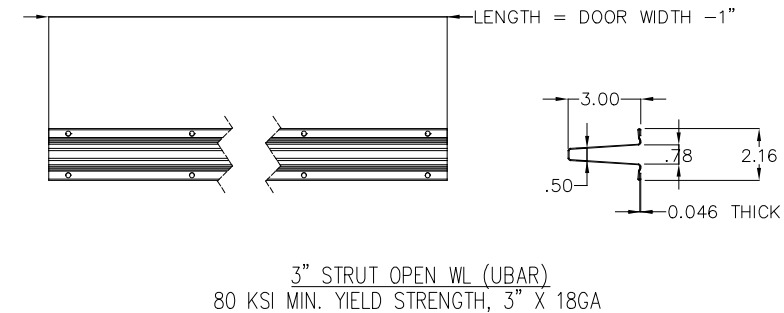
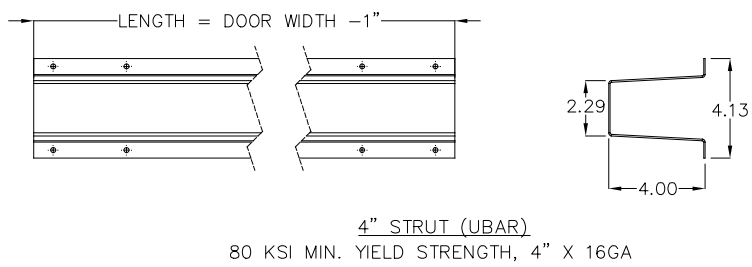
SCALE 1:12 UOM = EA SHEET 3 OF 4

SCALE 1:12 UOM = EA SHEET 3 OF 4

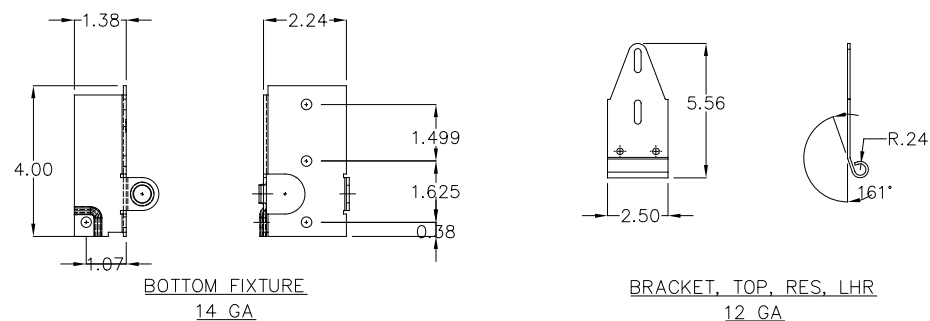
NOTES: (UNLESS OTHERWISE SPECIFIED)
 1. FOR DIMENSIONS AND NOTE REFERENCES, REFER TO INDIVIDUAL DRAWINGS.



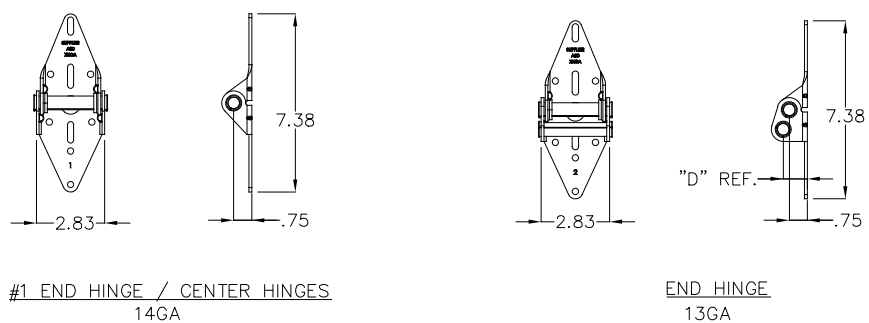
TOP FIXTURE DETAILS



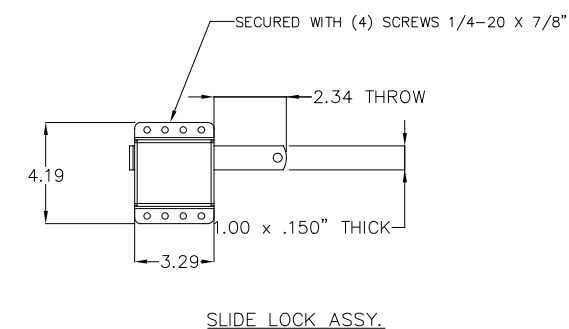
STRUT DETAILS



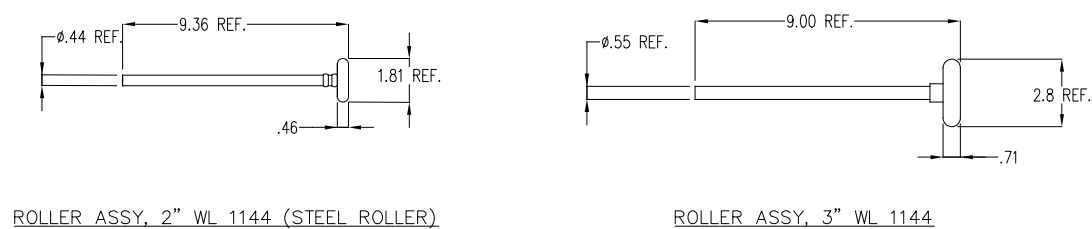
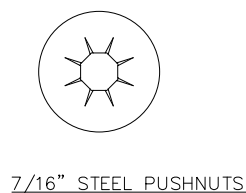
BOTTOM FIXTURE DETAILS



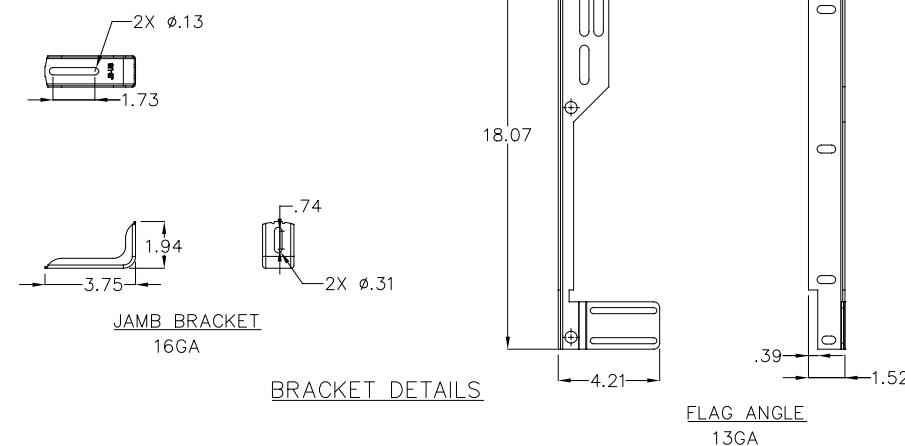
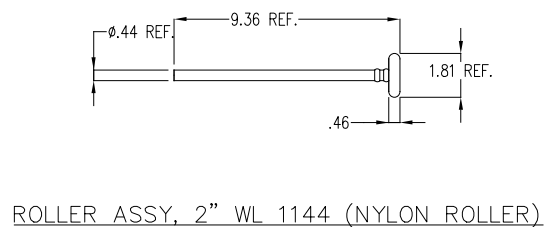
HINGE DETAILS



LOCK DETAILS



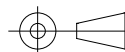
ROLLER STEM ASSY DETAILS (WITH PUSH NUTS)



JOHN E. SCATES, PE
 2560 KING ARTHUR BLVD #124-54
 LEWISVILLE, TX 75056
 FL PE 51737 TX PE 56308/F2203

PROFESSIONAL ENGINEER'S SEAL PROVIDED ONLY FOR
 VERIFICATION OF WINDLOAD CONSTRUCTION DETAILS.

THIRD ANGLE PROJECTION



A DIVISION OF OVERHEAD
 DOOR CORP
 3395 ADDISON DRIVE
 PENSACOLA, FLORIDA 32514
 (850)-474-9890

UNLESS OTHERWISE SPECIFIED

INTERPRET DIMS & TOLS
 PER ASME Y14.5M
 ALL DIMS ARE IN
 INCHES
 DO NOT SCALE
 DIMS CIRCLED WITH SYMBOL ARE CRITICAL TO QUALITY DESIGN
 FEATURES & MUST MEET APPLICABLE
 IN-PROCESS INSPECTION STANDARDS.

TOLERANCES:

.X = ±.1
 .XX = ±.03
 .XXX = ±.010
 ANGULAR = ±.5°

HOLES:

< Ø.251 = +.004/-0.003
 Ø.251-Ø.500 = +.006/-0.003
 > Ø.500 = +.008/-0.003

ALL GEOMETRY GOVERNED BY 3D CAD DATABASE:

APPROVALS	DATE
DRAWN G. CLARK	4-11-19
CHECKED D. KORNISH	2-18-20
APPROVED	-
MATERIAL	-
FINISH	-

PENSACOLA, FLORIDA	
DESCRIPTION 8000/8100/8200 16'2" MAX WIDTH	
SIZE D	DWG NO. D-365183
SCALE 1:12	REV A

UOM = EA	SHEET 4 OF 4
----------	--------------