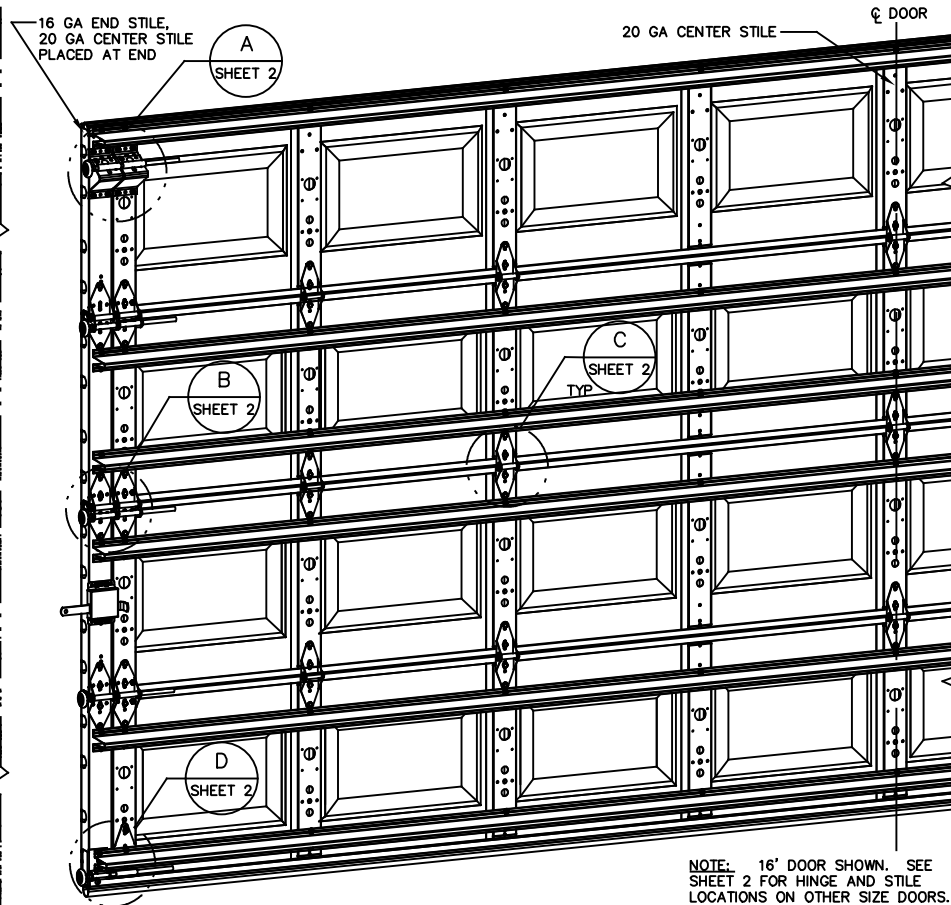
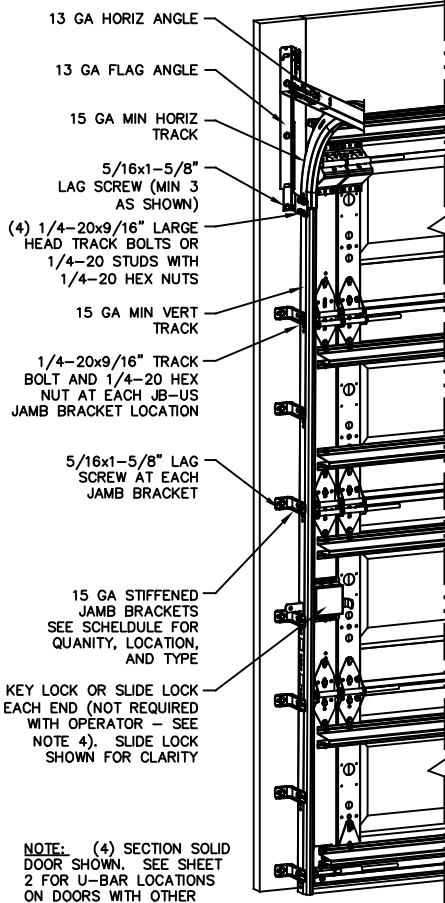


**NOTES:**

1. NON IMPACT GLAZING OPTIONS:  
A. 16 X 9.75 CLEAR OPENING INSTALLED TOP OR INTERMEDIATE SECTION.  
GLAZING SSB (0.090") MINIMUM.  
MAY INCLUDE DECORATIVE INSERTS  
NOT AVAILABLE IN MORE THAN ONE SECTION.  
DOES NOT SATISFY WINDBORNE-DEBRIS.
2. IMPACT GLAZING OPTION:  
16.75 X 9.75 CLEAR OPENING  
GLAZING 1/4" GROOVED POLYCARBONATE ALUMINUM FRAMES WITH 10 SCREWS MAY INCLUDE DECORATIVE INSERTS INSTALLED IN TOP OR INTERMEDIATE SECTION.  
NOT AVAILABLE IN MORE THAN ONE SECTION.  
SEE ASSEMBLY DETAIL ON SHEET 2.
3. VINYL OR WOOD DOOR STOP NAILED A MAXIMUM OF 6" O.C. MUST OVERLAP TOP AND BOTH ENDS OF PANELS MINIMUM 7/16" TO MEET NEGATIVE PRESSURES.
4. KEY LOCK, SLIDE LOCKS, OR OPERATOR REQUIRED.
5. LOUVER OPTION - .032" MINIMUM LOUVERS IN MOLDED FRAMES SCREWED TOGETHER WITH A MINIMUM OF (10) #8x1" SCREWS INSTALLED IN THE BOTTOM SECTION. LOUVERS ARE NOT IMPACT RESISTANT AND DO NOT MEET THE REQUIREMENTS FOR WIND-BORNE DEBRIS REGIONS.
6. SECTION STEEL TO HAVE A MINIMUM 25 GA THICKNESS.
7. THE DESIGN OF THE SUPPORTING STRUCTURAL ELEMENTS SHALL BE THE RESPONSIBILITY OF THE PROFESSIONAL OF RECORD FOR THE BUILDING OR STRUCTURE AND IN ACCORDANCE WITH CURRENT BUILDING CODES FOR THE LOADS LISTED ON THIS DRAWING.
8. DOOR JAMB TO BE MINIMUM 2" X 6", GRADE 2 SOUTHERN PINE. REFER TO JAMB CONNECTION SUPPLEMENT FOR ATTACHMENT TO SUPPORTING STRUCTURE.
9. FOR LOW HEAD ROOM LIFT CONDITIONS, TOP BRACKET SHALL BE A 13 GA LHR 7/4 TOP BRACKET WITH A MINIMUM OF (3) 1/4-14x7/8" SELF DRILLING CRIMPITITE SCREWS IN LIEU OF THE BRACKET SHOWN ON THIS DRAWING. U-BAR ON TOP SECTION SHALL BE INSTALLED ON TOP OF LHR TOP BRACKETS.



- REVISIONS**
- P1 MODIFIED NOTES TO STATE THAT LOUVERS ARE NOT IMPACT RESISTANT.  
GRT 6/29/07
- P2 ADDED IMPACT RESISTANT GLAZING. ADDED DETAIL E SHEET 2 FOR GLAZING. ADDED MAX GLAZING DIMENSION TO NOTES SHEET 1. MODIFIED JAMB BRACKET SCHEDULE. ADDED TRACK TO FLAG CONNECTION NOTE.  
GRT 11/10/07
- P3 MODIFIED LOUVER OPTION. ADDED TEXAS LICENSE NUMBER TO TITLE BLOCK.  
GRT 9/19/08
- P4 UPDATED TITLE BLOCK AND IMPACT GLAZING  
ESC 4/16/12
- P5 UPDATED TITLE BLOCK  
ESC 10/3/17
- P6 UPDATED TITLE BLOCK, REV PER ER 31052  
ESC 9/25/18
- P7 UPDATED NOTES ADDED LHR DETAIL ER 31052  
ESC 2/12/19

NOTE: (4) SECTION SOLID DOOR SHOWN. SEE SHEET 2 FOR U-BAR LOCATIONS ON DOORS WITH OTHER SECTION QUANTITIES AND SEE NOTES 1 AND 2 THIS SHEET FOR GLAZING OPTIONS.

NOTE: 16' DOOR SHOWN. SEE SHEET 2 FOR HINGE AND STILE LOCATIONS ON OTHER SIZE DOORS.

**SUPERIMPOSED DESIGN PRESSURE LOADS ON SUPPORTING STRUCTURE**

DOOR WIDTH	DOOR HEIGHT	UNIFORM LOAD EACH JAMB (PLF)
10'-0"	ALL	+172.0/-191.5
12'-0"	ALL	+206.4/-229.8
14'-0"	ALL	+240.8/-268.1
15'-0"	ALL	+258.0/-287.3
16'-0"	ALL	+275.2/-306.4

**JAMB BRACKET SCHEDULE**

DOOR HEIGHT	NO. OF SECTIONS	NO. OF JAMB BRACKETS (EACH JAMB)	LOCATION OF CENTERLINE OF JAMB BRACKETS MEASURED FROM BOTTOM OF TRACK (ALL DIMENSIONS ± 2")
6'-6"	4	7	2" (JB-US), 10" (JB-US), 21-3/4" (JB-US), 29-3/4" (JB-US), 39" (JB-US), 48" (JB-US), 57-1/4" (JB-US)
7'-0"	4	7	2" (JB-US), 10" (JB-US), 21-3/4" (JB-US), 29-3/4" (JB-US), 42" (JB-US), 52-1/2" (JB-US), 63-1/4" (JB-US)
7'-6"	5	9	2" (JB-US), 10" (JB-US), 18-3/4" (JB-US), 26-3/4" (JB-US), 36" (JB-US), 45" (JB-US), 54-1/4" (JB-US), 63" (JB-US), 74-1/2" (JB-US)
8'-0"	5	9	2" (JB-US), 10" (JB-US), 21-3/4" (JB-US), 29-3/4" (JB-US), 39" (JB-US), 48" (JB-US), 57-1/2" (JB-US), 66" (JB-US), 75-1/2" (JB-US)
> 8'-0"			SEE NOTE BELOW

NOTE: (JB-US) FOLLOWING DIMENSION DENOTES SLOTTED JAMB BRACKET ATTACHED TO TRACK WITH 1/4-20x9/16" TRACK BOLT AND NUT AS SHOWN ABOVE.  
ALL DOORS GREATER THAN 8' IN HEIGHT REQUIRE USE OF CONTINUOUS WALL ANGLE. SEE SUPPLEMENT TRACK CHART FOR DETAILS.

JOHN E. SCATES, PE  
2560 KING ARTHUR BLVD #124-54  
LEWISVILLE, TX 75056  
FL PE 51737  
TX PE 56308/F2203

PROFESSIONAL ENGINEER'S SEAL PROVIDED ONLY FOR VERIFICATION OF WINDLOAD CONSTRUCTION DETAILS.

**Wayne Dalton**  
GARAGE DOORS

A DIVISION OF OVERHEAD DOOR CORP  
3395 ADDISON DRIVE  
PENSACOLA, FLORIDA 32514  
(850) 474-9890

STATIC PRESSURE RATINGS		APPROVED SIZES		SCALE: N.T.S.		SIZE: A	
DESIGN (PSF):	+34.40/-38.30	MAX WIDTH:	16'-0"	DATE	NAME		
TEST (PSF):	+51.60/-57.45	MAX HEIGHT:	14'-0"	DRAWN	GRT		
IMPACT/CYCLIC RATED (YES/NO):	YES	MAX SECTION HEIGHT:	21"	CHECKED	MRB		
MODELS 8000/8100/8200				SHEET 1 OF 2			
WINDLOAD SPECIFICATION OPTION CODE 1124				DRAWING PART NO.		REV.	
				327018		P7	

**REVISIONS**

- P1 MODIFIED NOTES TO STATE THAT LOUVERS ARE NOT IMPACT RESISTANT. GRT 6/29/07
- P2 ADDED IMPACT RESISTANT GLAZING. ADDED DETAIL E SHEET 2 FOR GLAZING. ADDED MAX GLAZING DIMENSION TO NOTES SHEET 1. MODIFIED JAMB BRACKET SCHEDULE. ADDED TRACK TO FLAG CONNECTION NOTE. GRT 11/10/07
- P3 MODIFIED LOUVER OPTION. ADDED TEXAS LICENSE NUMBER TO TITLE BLOCK. GRT 9/19/08
- P4 UPDATED TITLE BLOCK AND IMPACT GLAZING GRT 4/16/12
- P5 UPDATED TITLE BLOCK ESC 10/3/17
- P6 UPDATED TITLE BLOCK, REV PER ER 31052 ESC 9/25/18
- P7 UPDATED NOTES ADDED LHR DETAIL ER 31052 ESC 2/12/19

**U-BAR LOCATIONS**

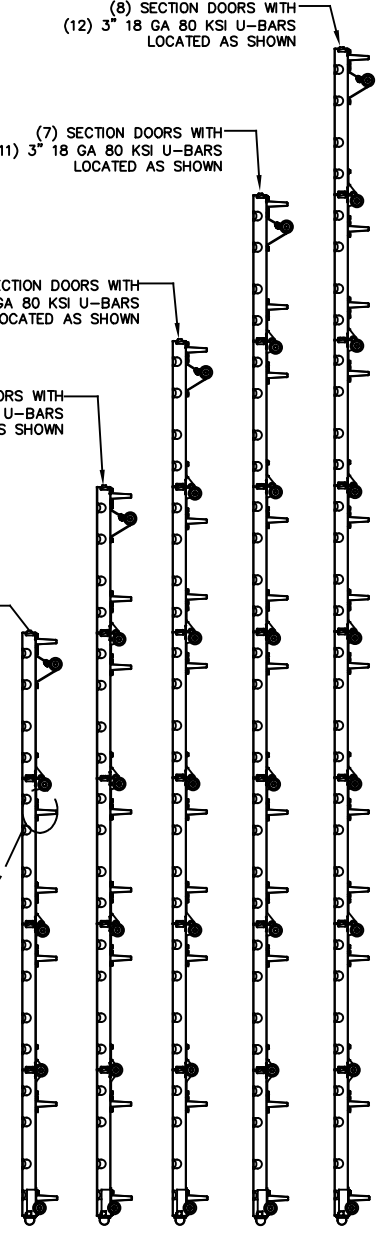
(8) SECTION DOORS WITH (12) 3" 18 GA 80 KSI U-BARS LOCATED AS SHOWN

(7) SECTION DOORS WITH (11) 3" 18 GA 80 KSI U-BARS LOCATED AS SHOWN

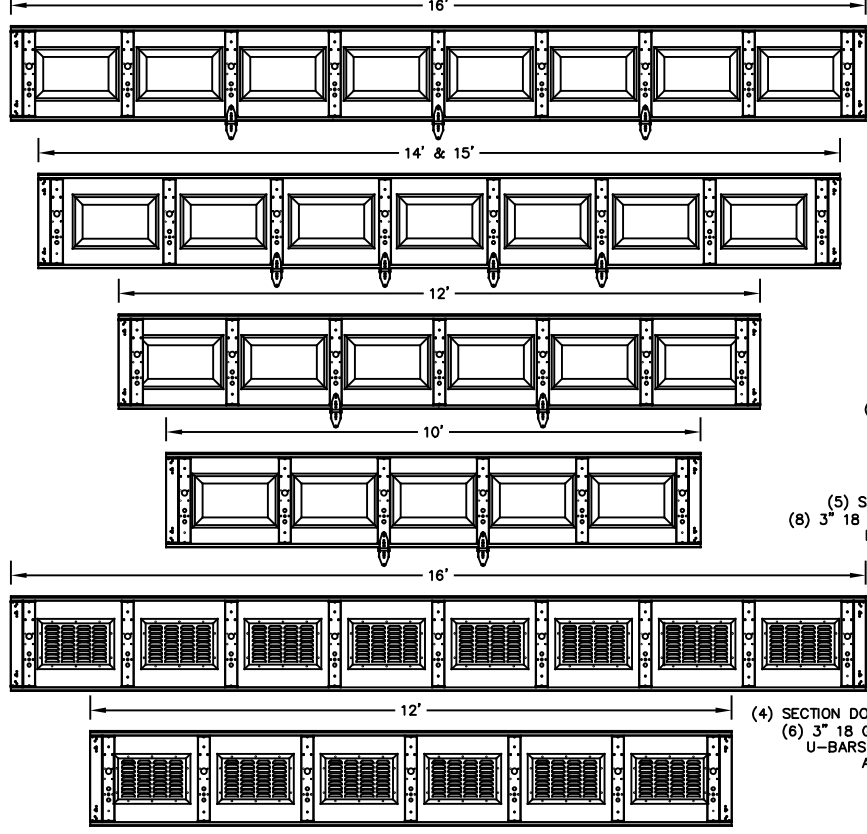
(6) SECTION DOORS WITH (9) 3" 18 GA 80 KSI U-BARS LOCATED AS SHOWN

(5) SECTION DOORS WITH (8) 3" 18 GA 80 KSI U-BARS LOCATED AS SHOWN

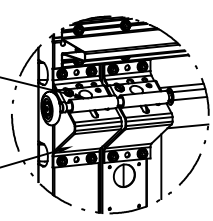
(4) SECTION DOORS WITH (6) 3" 18 GA 80 KSI U-BARS LOCATED AS SHOWN



**CENTER STILE & INTERMEDIATE HINGE LOCATIONS**

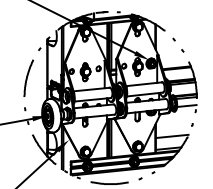


12 GA ROLLER SLIDE ATTACHED TO TRACK WITH 5/16-18 BOLT & NUT IN CENTER SLOT AND 1/4-20x9/16" TRACK BOLT & 1/4-20 HEX NUT THROUGH ANY TWO ALIGNING HOLES



**DETAIL A**

(2) 12 GA COMMERCIAL 'A' FRAME TOP BRACKETS EACH ATTACHED WITH (4) 1/4-14x7/8" SELF DRILLING CRIMPITTE SCREWS

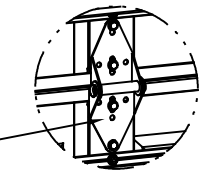


**DETAIL B**

ADD (2) 1/4-14x7/8" SELF DRILLING CRIMPITTE SCREWS (INSIDE OF EACH INSIDE END HINGE)

2" STEEL ROLLER WITH 9" GRADE 1144 OR EQUIVALENT STEM AND 7/16" PUSHNUT AT EACH ROLLER LOCATION. 1/4" MAX BETWEEN PUSHNUT AND BRACKET OR HINGE. OPTIONAL - 11 BALL BEARING NYLON ROLLER WITH 9" GRADE 1144 OR EQUIVALENT STEM

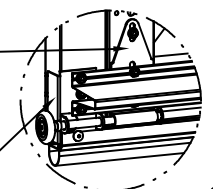
#1 HINGE IS 14 GA  
#2 HINGE IS 13 GA  
#3 HINGE (AND ALL ABOVE) ARE 13 GA WIDE BODY END HINGE ATTACHED WITH (4) 1/4-14x5/8" SELF TAPPING SCREWS



**DETAIL C**

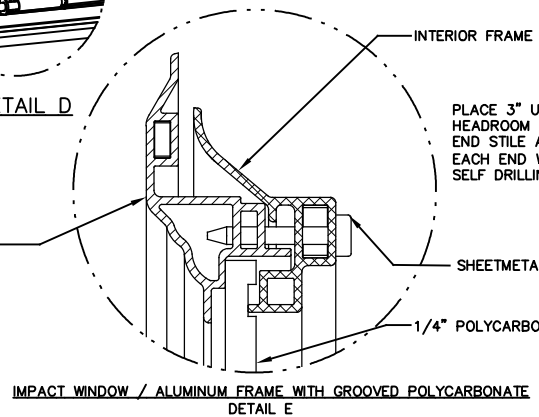
14 GA WIDE BODY INTERMEDIATE HINGE ATTACHED WITH (4) 1/4-14x5/8" SELF TAPPING SCREWS

12 GA EXTENSION BRACKET ATTACHED WITH (3) 1/4-14x7/8" SELF DRILLING CRIMPITTE SCREWS (2 THROUGH STRUT AND BRACKET)



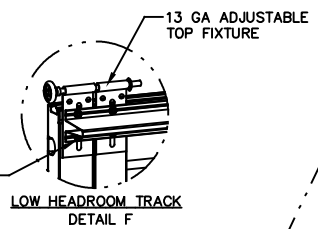
**DETAIL D**

14 GA BOTTOM BRACKET ATTACHED WITH (4) 1/4-14x7/8" SELF DRILLING CRIMPITTE SCREWS (2 OF WHICH IS THROUGH STRUT AND AND (1) 1/4-14x5/8" SELF DRILLING RED SCREW



**IMPACT WINDOW / ALUMINUM FRAME WITH GROOVED POLYCARBONATE**  
**DETAIL E**

PLACE 3" U-BAR OVER LOW HEADROOM BRACKET ATTACH THRU END STILE AND CENTER STILE AT EACH END WITH (4) 1/4-14x7/8" SELF DRILLING CRIMPITTE SCREWS.



**LOW HEADROOM TRACK**  
**DETAIL F**

ATTACH U-BAR WITH (2) 1/4-14x7/8" SELF DRILLING CRIMPITTE SCREWS AT EACH STILE LOCATION, TYP.

PROFESSIONAL ENGINEER'S SEAL PROVIDED ONLY FOR VERIFICATION OF WINDLOAD CONSTRUCTION DETAILS.

JOHN E. SCATES, PE  
2560 KING ARTHUR BLVD #124-54  
LEWISVILLE, TX 75056  
FL PE 51737  
TX PE 56308/F2203



A DIVISION OF OVERHEAD DOOR CORP  
3395 ADDISON DRIVE  
PENSACOLA, FLORIDA 32514  
(850) 474-9890

STATIC PRESSURE RATINGS		APPROVED SIZES		SCALE: N.T.S.	SIZE: A
DESIGN (PSF):	+34.40/-38.30	MAX WIDTH:	16'-0"	DATE	NAME
TEST (PSF):	+51.60/-57.45	MAX HEIGHT:	14'-0"	DRAWN	GRT
IMPACT/CYCLIC RATED (YES/NO):	YES	MAX SECTION HEIGHT:	21"	CHECKED	MRB
MODELS 8000/8100/8200				SHEET 2 OF 2	
WINDLOAD SPECIFICATION OPTION CODE 1124				DRAWING PART NO.	REV.
				327018	P7