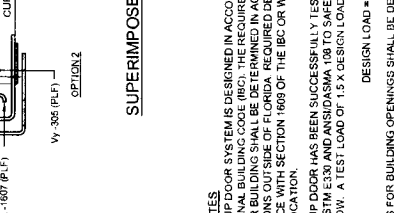
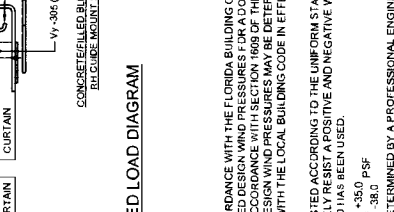
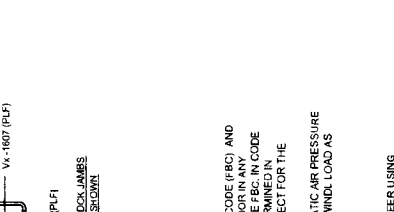
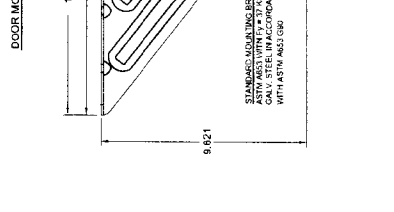
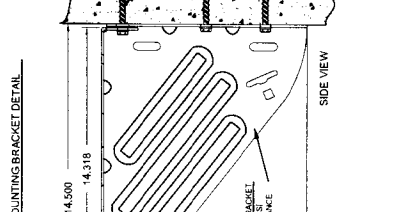
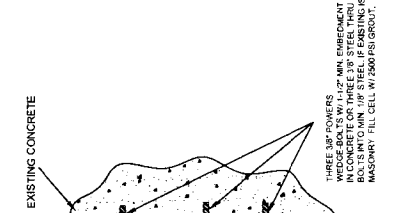
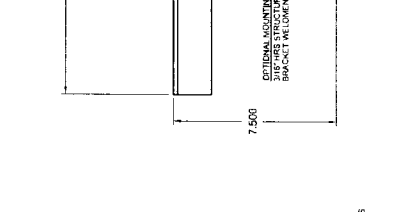
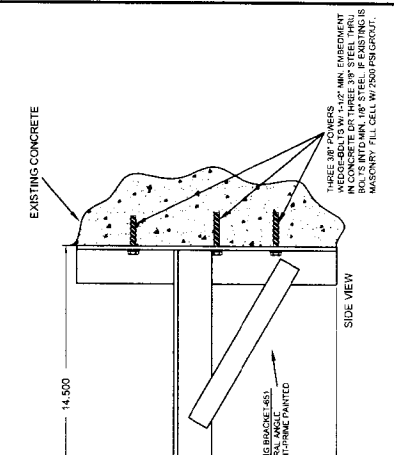
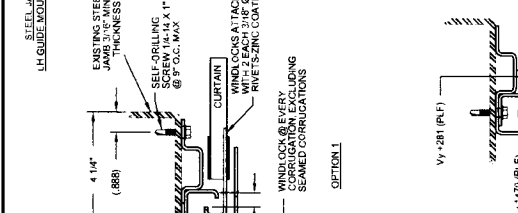
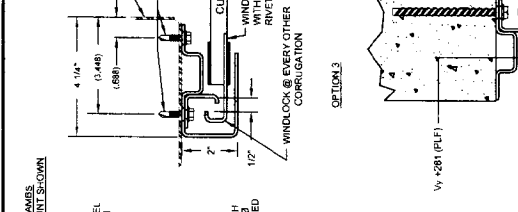
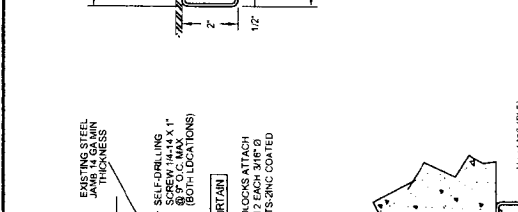
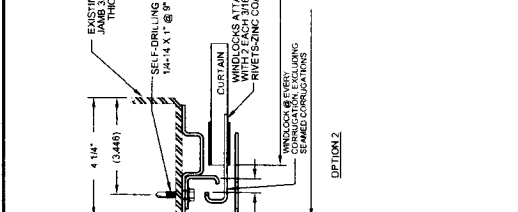
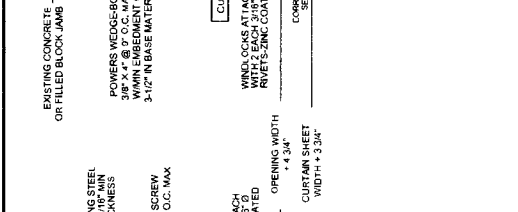
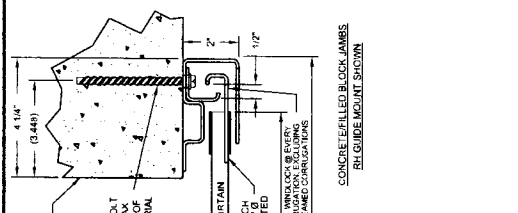


REV	DESCRIPTION	DATE	APPROVAL
	DRAWING RELEASE	1-31-03	DM
A	GUIDE ATTACH AT TOE	11-13-03	DM
B	ADD GUIDE OPTION 3	4-13-04	DM
C	RETEST FOR FLORIDA	9-26-05	DM
D	REMOVED STD NDRS. DATES	9-26-05	CS
E	ADDED 'T' BRACKET OPTION	01-20-12	CS
F	ADDED CHARTED PSF VALUES	11-07-12	CS
G	REVISED CHARTED PSF VALUES DOWN TO 10' F. REVISED HEADBOOK CHART	05-22-13	CS

MAX WIND SPEED (PSF)	MAX WIND LOAD (PSF)	DESIGN LOAD (PSF)	DESIGN WIND SPEED (MPH)	DESIGN WIND LOAD (PSF)
10'-0"	20'-0"	77.7	73.9	83.9
11'-0"	20'-0"	65.8	70.8	70.8
12'-0"	20'-0"	56.4	61	61
13'-0"	20'-0"	49.3	53.3	53.3
14'-0"	20'-0"	43.5	47.2	47.2
15'-0"	20'-0"	38.8	42.1	42.1
16'-0"	20'-0"	35.0	38.0	38.0
17'-0"	20'-0"	31.8	34.5	34.5
18'-0"	20'-0"	29.0	31.5	31.5
19'-0"	20'-0"	26.6	28.9	28.9
20'-0"	20'-0"	24.5	26.7	26.7



JANUS INTERNATIONAL CORPORATION
 134 JANUS INTERNATIONAL BLVD TEMPLE, GA 30179
 770-562-2850 Fax 770-562-2264
 © 2012 Janus International Corporation All Rights Reserved

CERTIFIED WIND LOAD RATED 26
 G.A. SERIES 3100 DOOR ASSEMBLY
 MAX. SIZE: 20'-0" X 20'-0"

DRAWING NUMBER: **T1005**
 SIZE: **B**
 SCALE: NONE
 SHEET: 2 OF: 2

APPROVALS: CURT SCHROEDER
 DATE: 11-07-12

APPROVALS: CURT SCHROEDER
 DATE: 11-07-12

APPROVALS: CURT SCHROEDER
 DATE: 11-07-12

APPROVALS: CURT SCHROEDER
 DATE: 11-07-12

APPROVALS: CURT SCHROEDER
 DATE: 11-07-12

APPROVALS: CURT SCHROEDER
 DATE: 11-07-12

APPROVALS: CURT SCHROEDER
 DATE: 11-07-12

THESE CONFIDENTIAL DOCUMENTS SUBMITTED BY JANUS CONTAIN INFORMATION OF A PROPRIETARY NATURE AND MAY NOT BE REPRODUCED OR USED TO MANUFACTURE ANYTHING IN PART OR IN WHOLE FOR ANY PURPOSE OTHER THAN THAT WHICH IS NECESSARY FOR PREPARATION OF BIDS OF ENGINEERING WITHOUT THE EXPRESS PERMISSION OF JANUS WHICH MAY BE OBTAINED BY CONTACTING JANUS AT ANY TIME.

UNUSUALLY SPECIFIED DIMENSIONS ARE IN INCHES. TOLERANCES LISTED BELOW:

FRACTIONS	ANGLES	HOLE DIAMETERS
+1/16"	+/- 0' 30"	+0.004
1/8"		-0.003
3/16"		+0.008
1/2"		-0.003
3/4"		+0.008
1"		-0.003

STATE OF FLORIDA
JOSEPH DIXON, R
18627
PROFESSIONAL ENGINEER
EXPIRES 12/31/14
5/22/13

GENERAL NOTES
 1. THIS CURTAIN WALL SYSTEM IS DESIGNED IN ACCORDANCE WITH THE FLORIDA BUILDING CODE (FBC) AND INTERNATIONAL BUILDING CODE (IBC). THE REQUIRED DESIGN WIND PRESSURES FOR A DOOR IN ANY PARTICULAR BUILDING SHALL BE DETERMINED IN ACCORDANCE WITH SECTION 1609 OF THE FBC IN CODE JURISDICTIONS OUTSIDE OF FLORIDA. REQUIRED DESIGN WIND PRESSURES MAY BE DETERMINED IN ACCORDANCE WITH SECTION 1609 OF THE IBC OR WITH THE LOCAL BUILDING CODE IN EFFECT FOR THE SPECIFIC LOCATION.
 2. THIS ROLL-UP DOOR HAS BEEN SUCCESSFULLY TESTED ACCORDING TO THE UNIFORM STATIC AIR PRESSURE TEST PER ASTM E330 AND ANSI/DINMA 108 TO SAFELY RESIST A POSITIVE AND NEGATIVE WIND LOAD AS NOTED BELOW. A TEST LOAD OF 1.5 X DESIGN LOAD HAS BEEN USED.
 DESIGN LOAD = -35.0 PSF
 3. WIND LOADS FOR BUILDING OPENINGS SHALL BE DETERMINED BY A PROFESSIONAL ENGINEER USING APPROPRIATE WIND SPEED AND DESIGN CRITERIA. WIND LOADS MAY BE USED WHERE THE DESIGN LOAD MEETS OR EXCEEDS THE DESIGN LOAD FOR THE BUILDING OPENING.
 4. SUPERIMPOSED LOADS ON THE JAMBS FROM THIS DOOR ARE DESIGNED AS V_W AND V_W (VERTICAL). CONTRACTORS SHALL HAVE BUILDING ENGINEER VERIFY ADEQUACY OF BUILDING STRUCTURE TO RESIST SUPERIMPOSED LOADS V_W AND V_W.
 5. ALL WELDING SHALL BE PERFORMED BY QUALIFIED WELDERS IN ACCORDANCE WITH A.M.S. SPECIFICATIONS (LATEST EDITION). ALL WELDING ELECTRODES SHALL CONFORM TO A.W.S. A51, GRADE E70.
 6. DOORS SHALL BE PROVIDED WITH LOCK MECHANISMS AT THE OPTION OF THE OWNER.
 7. ALL BOLTS AND WASHERS SHALL BE GALVANIZED OR STAINLESS STEEL WITH A MINIMUM TENSILE STRENGTH OF 60 KSI.
 8. DESIGN BASED ON CERTIFIED TESTING LABORATORIES, INC. TEST REPORTS NO. CTLA1432W FOR THROUGH GUIDE ATTACHMENT TO JAMB AND NO. CTLA1432W-1 FOR TOE OF GUIDE ATTACHMENT TO JAMB.
 9. ANCHOR NOTES:
 A. EMBEDMENT LENGTH DOES NOT INCLUDE STUCCO FINISH.
 B. FOR HOLLOW MASONRY, FILL ALL CELLS @ ANCHOR WITH 2500 PSI GROUT.
 C. ANCHORS SHALL BE INSTALLED IN ACCORDANCE WITH MANUFACTURER'S SPECIFICATIONS.
 10. DOOR OPERATION TYPE TO BE PUSH-UP, HAND CHAIN, OR ELECTRIC.
 11. GUIDE TO JAMB ATTACHMENT FASTENERS BEGIN 4" FROM FLOOR AND 4" BELOW TOP OF THE WALL OPENING.
 12. TEST DOOR WALL OPENING SIZE: 16'-0" X 8'-0".