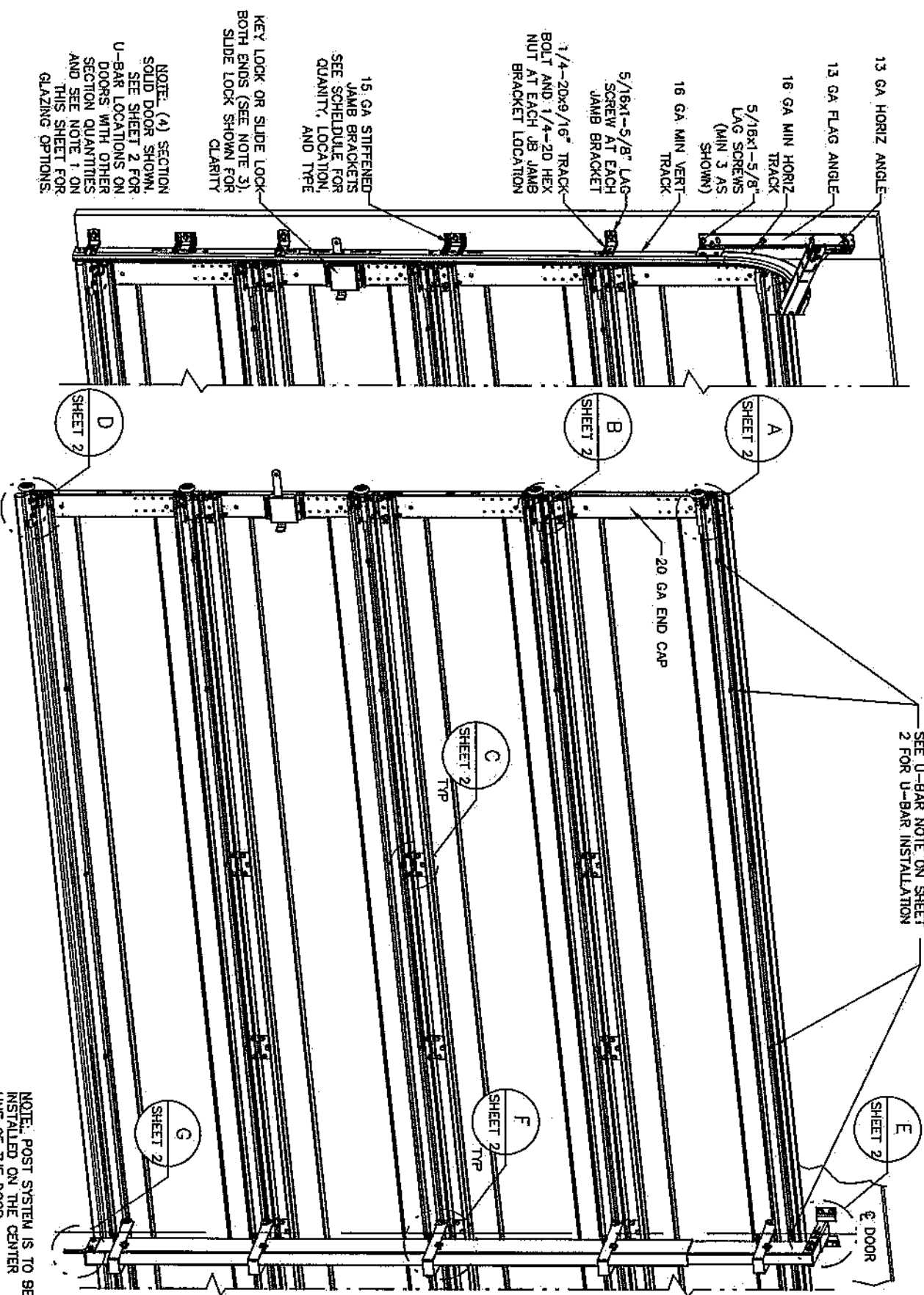


NOTES:
 1. VINYL OR WOOD DOOR STOP NAILED A MAXIMUM OF 6" O.C. MUST OVERLAP TOP AND BOTH ENDS OF PANELS MINIMUM 7/16" TO MEET NEGATIVE PRESSURES.
 2. KEY LOCK OR SLIDE LOCKS REQUIRED.
 3. SECTION SHALL BE CONSTRUCTED WITH FOAMED IN PLACE POLYURETHANE FOAM INSULATION CHEMICALLY BONDED TO 30 GA MINIMUM FACER STEEL AND A POLYLAMINATE OR 32 GA STEEL BACKER. END CAP TO HAVE A MINIMUM 1.4" DEPTH.
 4. THE DESIGN OF THE SUPPORTING STRUCTURAL ELEMENTS SHALL BE THE RESPONSIBILITY OF THE PROFESSIONAL ENGINEER OF RECORD FOR THE BUILDING OR STRUCTURE AND IN ACCORDANCE WITH CURRENT BUILDING CODES FOR THE LOADS LISTED ON THIS DRAWING.
 5. DOOR JAMB TO BE MINIMUM 2x6 STRUCTURAL GRADE LUMBER. REFER TO JAMB CONNECTION SUPPLEMENT FOR ATTACHMENT TO SUPPORTING STRUCTURE.
 6. LOUVER OPTION (DETAIL H) - .08" MINIMUM LOUVERS IN MOLDED FRAMES. 19"x13.9" (OLO)=15 1/2"x 10 1/2"), SCREWED TOGETHER WITH A MINIMUM OF (12) #8x1" SCREWS ((3) ALONG EACH HORIZONTAL LEG AND (3) ALONG EACH VERTICAL LEG). LOUVERS ARE NOT IMPACT RESISTANT AND DO NOT MEET THE REQUIREMENTS FOR WIND-BORNE DEBRIS REGIONS. LOUVERS ARE ONLY INSTALLED IN THE BOTTOM SECTION.



SUPERIMPOSED DESIGN PRESSURE LOADS ON SUPPORTING STRUCTURE

MAX DOOR WIDTH	MAX DOOR HEIGHT	UNIFORM LOAD EACH JAMB (PLF)	POINT LOAD AT EACH POST LOCATION (LBS)
18'-0"	7'-0"	+180.6 / -224.0	+1617.0 / -1802.6
	8'-0"	+180.6 / -224.0	+1837.5 / -2048.5

JAMB BRACKET SCHEDULE

DOOR HEIGHT	NO. OF BRACKETS (EACH JAMB)	TRACK TYPE	LOCATION OF CENTERLINE OF JAMB BRACKETS MEASURED FROM BOTTOM OF TRACK (ALL DIMENSIONS ± 2")
7'-0"	4	QI	2" (JB), 13" (QI), 25-1/2" (JB), 45-1/4" (QI), 63" (JB)
7'-0"	4	FAT	2" (JB), 10" (JB), 25-3/4" (JB), 42" (JB), 63-1/4" (JB)
8'-0"	4 OR 5	QI	2" (JB), 13" (QI), 23" (JB), 34" (JB), 47-1/4" (QI), 67" (QI)
8'-0"	4 OR 5	FAT	2" (JB), 10" (JB), 21-3/4" (JB), 29-3/4" (JB), 48" (JB), 66" (JB)

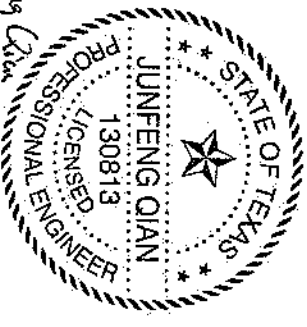
HIGH LIFT/ROOF PITCH SEE NOTE BELOW

NOTE: (A) SECTION SOLID DOOR SHOWN. SEE SHEET 2 FOR U-BAR LOCATIONS ON DOORS WITH OTHER SECTION QUANTITIES AND SEE NOTE 1 ON THIS SHEET FOR GLAZING OPTIONS.

NOTE: POST SYSTEM IS TO BE INSTALLED ON THE CENTER LINE OF THE DOOR. SEE WINDLOAD POST INSTALLATION INSTRUCTIONS.

REVISIONS

- P1 REVISED SUPERIMPOSED DESIGN PRESSURE LOADS ON SUPPORTING STRUCTURE MAR 5/10/06
- P2 ADDED IMPACT RESISTANCE TO DOOR. ADDED JB JAMB BRACKET AT 2" LOCATION. ADDED MODEL 6100. MODIFIED NOTE 7 TO STATE THAT LOUVERS ARE NOT IMPACT RESISTANT. GRT 6/6/07
- P3 MODIFIED JAMB BRACKET SCHEDULE FOR FAT OPTION. ADDED LHR TRACK DETAIL SHEET 2. GRT 4/17/08
- P4 ADDED CONCRETE DETAIL SHEET 2. ADDED TEXAS LICENSE NUMBER TO TITLE BLOCK. CHANGED LOUVER NOTE. ADDED HIGH LIFT AND ROOF PITCH TRACK NOTE. GRT 4/29/09
- P5 UPDATED TITLE BLOCK GRT 5/4/10
- P6 ER31223 CHANGED DOOR MODEL NUMBERS, AND BACKER NOTES. ESC 6/7/2017
- REV F - UPDATED REVISION FROM NUMERIC TO ALPHA TLC 092920
- REV G - DRAWING UPDATES FOR TDI TLC 3/23/21
- REV H - DRAWING UPDATES FOR TDI TLC 4/20/21



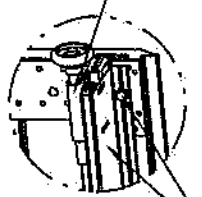
Junfeng Qian
 JUNFENG QIAN
 5729 AMPHORA AVE
 MCKINNEY, TEXAS 75070
 TEXAS PE 130813
 PROFESSIONAL ENGINEER'S SEAL PROVIDED ONLY FOR VERIFICATION OF WINDLOAD CONSTRUCTION DETAILS.

NOTE:
 (JB) FOLLOWING DIMENSION DENOTES SLOTTED JAMB BRACKET ATTACHED TO TRACK WITH 1/4"-20x9/16" TRACK BOLT AND NUT.
 (QI) FOLLOWING DIMENSION DENOTES QUICK INSTALL JAMB BRACKET INSTALLED IN BUTTERFLY SLOT. NO ADDITIONAL HARDWARE NEEDED TO ATTACH TO TRACK.
 ALL DOORS WITH HIGH LIFT AND/OR ROOF PITCH REQUIRE USE OF CONTINUOUS WALL ANGLE. SEE SUPPLEMENT TRACK CHART FOR DETAILS.

Wayne Dalton
 GARAGE DOORS
 A DIVISION OF OVERHEAD DOOR CORP
 3395 ADDISON DRIVE
 PENSACOLA, FLORIDA 32514
 (850) 474-9890

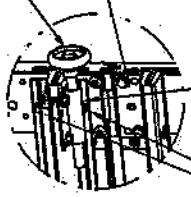
STATIC PRESSURE RATINGS:	APPROVED SIZES:	SCALE:	N.T.S.	SIZE:	A
DESIGN (PSF): +39.20 / -43.70	MAX WIDTH: 18'-0"	DATE:	3/3/06	NAME:	GRT
TEST (PSF): +58.80 / -65.55	MAX HEIGHT: 8'-0"	DRAWN:	4/20/21	CHECKED:	TLC
IMPACT/CYCLIC RATED (YES/NO): YES	MAX SECTION HEIGHT: 24"	SHEET 1 OF 2			
MODELS 5120/5145/9100/9405/9600	WINDLOAD SPECIFICATION OPTION CODE 0609	DRAWING PART NO.	319035	REV.	H

13 GA ADJUSTABLE TOP FIXTURE ATTACHED TO PRE-PUNCHED HOLES IN BOTTOM OF U-BAR WITH (2) 1/4-14x5/8" CRIMPITE SCREWS



DETAIL A

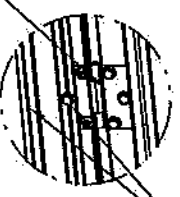
13 GA ROLLER SLIDE ATTACHED TO PRE-PUNCHED HOLES IN TOP OF U-BAR WITH (2) 1/4-14x5/8" CRIMPITE SCREWS. USE VIEWING HOLE IN SLIDE TO ENSURE PROPER ALIGNMENT OF ROLLERS



DETAIL B

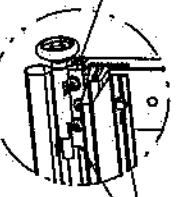
2" NYLON STORMGUARD ROLLER WITH 4-1/2" STEM

18 GA HINGE ATTACHED WITH (6) 1/4-20x5/8" CRIMPITE SCREWS (2 OF WHICH ARE FACTORY ATTACHED, 3 OF WHICH ARE FIELD INSTALLED INTO TOP LEAF AND 1 OF WHICH IS FIELD INSTALLED THRU PRE-PUNCHED HOLE IN U-BAR)



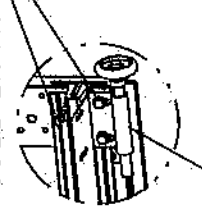
DETAIL C

12 GA BOTTOM BRACKET FACTORY ATTACHED WITH (3) 1/4-14x5/8" CRIMPITE SCREWS



DETAIL D

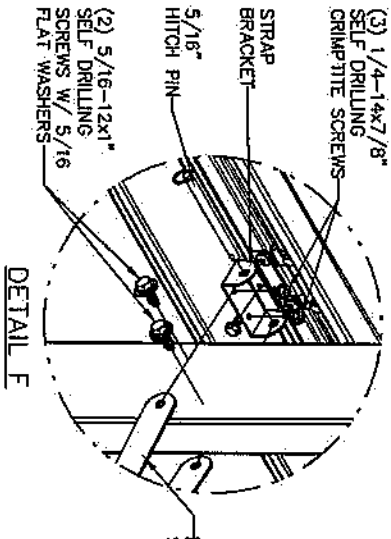
PLACE U-BAR OVER INTEGRAL RIB WITH THE (8) PRE-PUNCHED HOLES EACH END FACING UPWARD AND ATTACH THRU END CAP AT EACH END WITH (2) 1/4-14x7/8" SELF DRILLING CRIMPITE SCREWS FOR STANDARD TRACK AND (3) 1/4-14x7/8" SELF DRILLING CRIMPITE SCREWS FOR LOW HEADROOM TRACK (2 OF WHICH ARE USED TO ATTACHED THE TOP BRACKET AS SHOWN)



DETAIL A

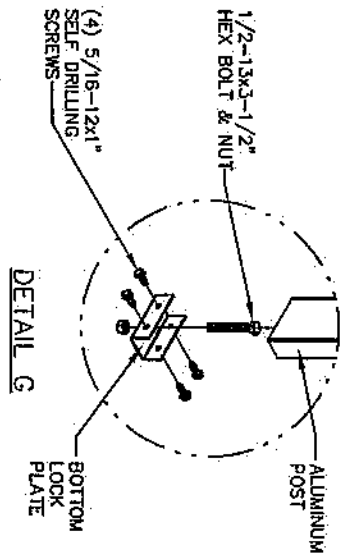
NOTE: DUE TO CLEARANCES REQUIRED TO INSTALL SCREWS AT THE ENDS OF THE U-BARS, ALL U-BARS SHALL BE INSTALLED ON ROLLER SLIDES AND TOP FIXTURE ON THE U-BARS. SEE ATTACHMENT NOTES ON THIS SHEET.

PLACE U-BAR OVER INTEGRAL RIB AND ATTACH WITH (2) 1/4-20x5/8" CRIMPITE SCREWS THRU PRE-PUNCHED HOLES AT EACH INTERMEDIATE HINGE LOCATION (1 THRU FLANGE OF U-BAR AND BOTTOM HINGE LEAF AND 1 THRU WEB OF U-BAR AND INTEGRAL RIB OF SECTION) EXCEPT: AT ALL LOCATIONS REQUIRING A STRAP BRACKET, (1) 1/4-14x7/8" SELF DRILLING CRIMPITE SCREW WILL BE USED.



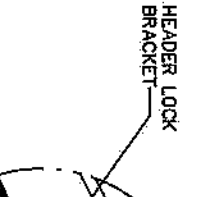
DETAIL F

PLACE U-BAR OVER INTEGRAL RIB WITH NOTCH DOWN TO CLEAR BOTTOM BRACKET AND ATTACH THRU END CAP AT EACH END WITH (1) 1/4-14x7/8" SELF DRILLING CRIMPITE SCREW AS SHOWN AND USE (1) 1/4-14x7/8" SELF DRILLING CRIMPITE SCREW ACROSS THE BOTTOM OF THE BOTTOM U-BAR AT EACH PRE-PUNCHED HOLE AT EVERY HINGE LOCATION. USE (1) 1/4-20x5/8" CRIMPITE SCREW AT ALL OTHER PRE-PUNCHED HOLE LOCATIONS.



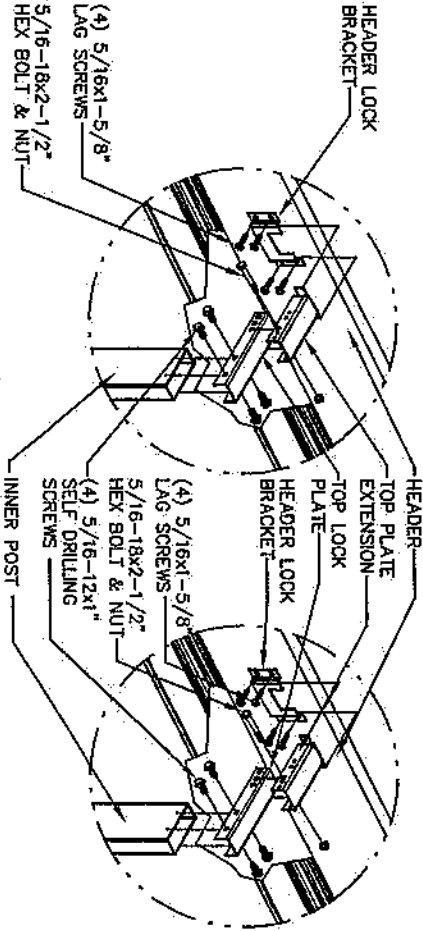
DETAIL G

13 GA ADJUSTABLE TOP FIXTURE



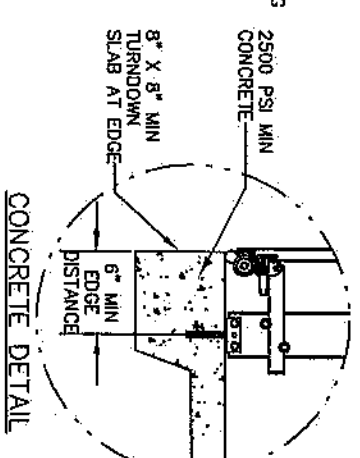
DETAIL A

LOW HEADROOM TRACK



DETAIL E

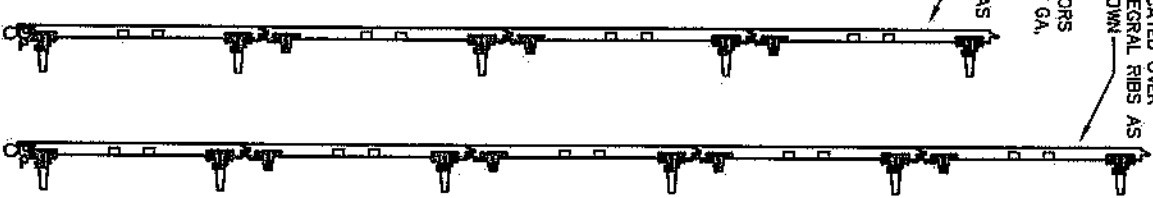
(4) SECTION DOORS WITH (5) 3", 18 GA, 80 KSI U-BARS LOCATED OVER INTEGRAL RIBS AS SHOWN



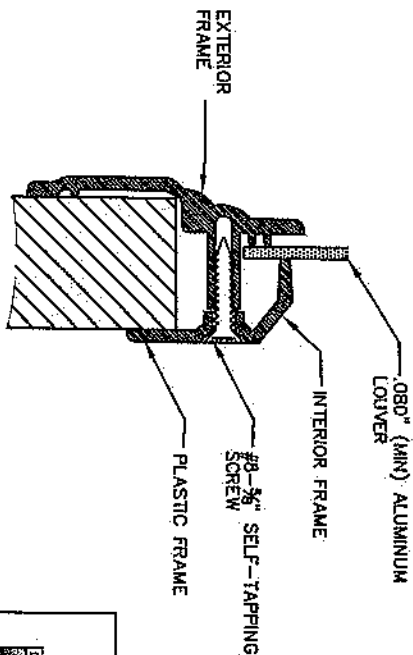
CONCRETE DETAIL

U-BAR ATTACHMENT NOTES:

1. ALL U-BARS SHALL BE PLACED OVER INTEGRAL RIBS AND ATTACHED THRU PRE-PUNCHED HOLES WITH (2) 1/4-14x5/8" CRIMPITE SCREWS AT EACH INTERMEDIATE HINGE LOCATION, (2) 1/4-14x7/8" SELF DRILLING CRIMPITE SCREWS AT EACH END CAP (EXCEPT BOTH U-BARS ON BOTTOM SECTION - SEE DETAIL B AND D THIS SHEET), (2) 1/4-14x5/8" CRIMPITE SCREWS APPROXIMATELY MIDWAY BETWEEN END OF DOOR AND INTERMEDIATE HINGE LOCATION, AND (1) 1/4-14x5/8" CRIMPITE SCREW APPROXIMATELY 8" FROM EACH END. THERE SHALL BE A TOTAL OF (20) SCREWS ATTACHING EACH U-BAR EXCEPT BOTH U-BARS ON BOTTOM SECTION SHALL HAVE A TOTAL OF (18) SCREWS EACH.
2. WITH THE EXCEPTION OF THE (8) PRE-PUNCHED HOLES IN THE TOP OF EACH END USED FOR ATTACHMENT OF THE ROLLER SLIDES AND THE (6) PRE-PUNCHED HOLES IN THE BOTTOM OF EACH END USED FOR THE ATTACHMENT OF THE TOP FIXTURE AND UNLESS NOTED OTHERWISE ON THIS SPECIFICATION DRAWING, ALL PRE-PUNCHED HOLES IN ALL U-BARS SHALL BE ATTACHED TO THE DOOR WITH 1/4-14x5/8" CRIMPITE SCREWS.
3. 18 GA U-BARS SHALL BE STAMPED "46" APPROXIMATELY 8" FROM EACH END.



JUNFENG QIAN
PROFESSIONAL ENGINEER
130813
5729 AMPHORA AVE
MCJINNEY, TEXAS 75070
TEXAS PE 130813



EXTERIOR FRAME
INTERIOR FRAME
PLASTIC FRAME
NON-IMPACT LUBBER (STATIC RATED)
DETAIL H

Wayne Dalton
GARAGE DOORS

A DIVISION OF OVERHEAD DOOR CORP
3395 ADDISON DRIVE
PENSACOLA, FLORIDA 32514
(850) 474-9890

STATIC PRESSURE RATINGS

DESIGN (PSF): +39.20/-43.70

TEST (PSF): +58.80/-65.55

IMPACT/CYCLIC RATED (YES/NO): YES

MODELS 5120/5145/9100/9405/9600

APPROVED SIZES

MAX WIDTH: 18'-0"

MAX HEIGHT: 8'-0"

MAX SECTION HEIGHT: 24"

MODELS 5120/5145/9100/9405/9600

SCALE: N.T.S.

DATE

3/3/06

CHECKED

4/20/21

SIZE: A

NAME

GRT

TLC

SHEET 2 OF 2

DRAWING PART NO.

319035

REV.

H

REVISIONS