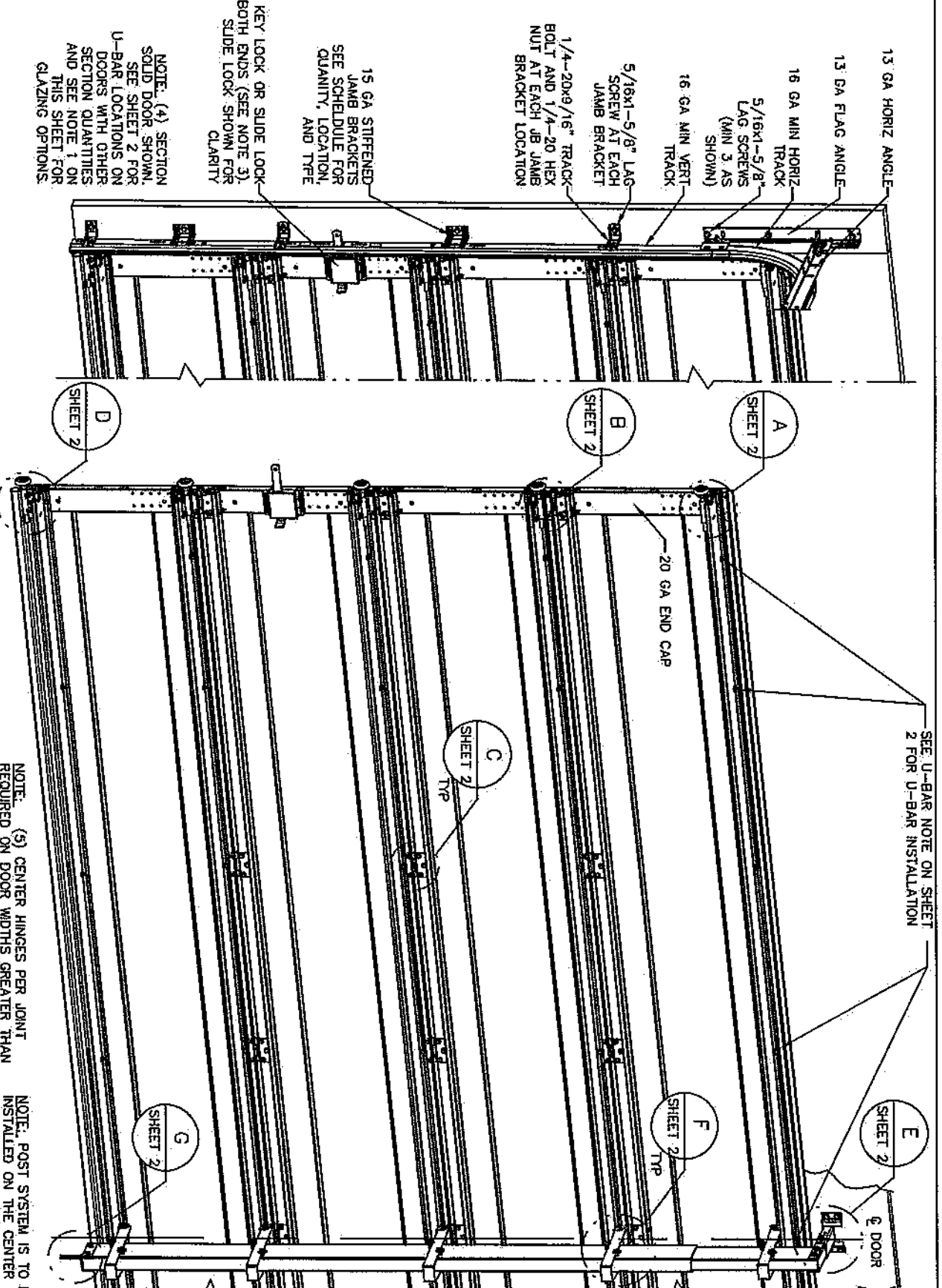


- NOTES:**
- IMPACT RESISTANT GLAZING (DETAIL H) - IMPACT RESISTANT GLAZING SYSTEM MAY BE INSTALLED IN TOP OR INTERMEDIATE SECTION (WITH OR WITHOUT DECORATIVE INSERTS). GLAZING SHALL BE 1/4" MAKROLON-AR POLYCARBONATE OR EQUAL. GLAZING SHALL HAVE A MAXIMUM HEIGHT OF 15.21" AND A MAXIMUM LENGTH OF 50.08" SCREWED TOGETHER WITH A MINIMUM OF (10) #8x1" SCREWS ((3) ALONG EACH HORIZONTAL LEG AND (2) ALONG EACH VERTICAL LEG). GLAZING IS IMPACT RESISTANT AND DOES MEET THE REQUIREMENTS FOR WIND-BORNE DEBRIS REGIONS. GLAZED SECTION REQUIRES REINFORCEMENT BRACKETS ATTACHED TO U-BAR ON UPPER INTEGRAL RIB (SEE DETAIL J SHEET 2). 20 GA U-STRUT SCREWED TO LOWER INTEGRAL RIB OF SECTION AND OPERATOR STILE TO BE FACTORY INSTALLED. INSTALLER SHALL FIELD INSTALL ((3)) 1/4"-14x7/8" SELF DRILLING COMPRIITE SCREW TO ATTACH THE ADDITIONAL STRAP BRACKET TO THE U-STRUT AND OPERATOR STILE AT THE CENTERLINE OF THE DOOR PER DETAIL F ON SHEET 2.
  - WNTL OR WOOD DOOR STOP NAILED A MAXIMUM OF 6" O.C. MUST OVERLAP TOP AND BOTH ENDS OF PANELS MINIMUM 7/16" TO MEET NEGATIVE PRESSURES.
  - KEY LOCK OR SLIDE LOCKS REQUIRED.
  - SECTION SHALL BE CONSTRUCTED WITH FOAMED IN PLACE POLYURETHANE FOAM INSULATION CHEMICALLY BONDED TO 30 GA MINIMUM FAGER STEEL AND A POLYLAMINATE OR 3/2 GA STEEL BACKER. END CAP TO HAVE A MINIMUM 1.4" DEPTH.
  - THE DESIGN OF THE SUPPORTING STRUCTURAL ELEMENTS SHALL BE THE RESPONSIBILITY OF THE PROFESSIONAL ENGINEER OF RECORD FOR THE BUILDING STRUCTURE AND IN ACCORDANCE WITH CURRENT BUILDING CODES FOR THE LOADS LISTED ON THIS DRAWING.
  - DOOR JAMB TO BE MINIMUM 2x6 STRUCTURAL GRADE LUMBER. REFER TO JAMB CONNECTION SUPPLEMENT FOR ATTACHMENT TO SUPPORTING STRUCTURE.
  - LOUVER OPTION (DETAIL I) - 08" MINIMUM LOUVERS IN MOLDED FRAMES, 19"x13.9" (OLO=15 1/2" X 10 1/2"), SCREWED TOGETHER WITH A MINIMUM OF (12) #8x1" SCREWS ((3) ALONG EACH HORIZONTAL LEG AND (3) ALONG EACH VERTICAL LEG). LOUVERS ARE NOT IMPACT RESISTANT AND DO NOT MEET THE REQUIREMENTS FOR WIND-BORNE DEBRIS REGIONS. LOUVERS ARE ONLY INSTALLED IN THE BOTTOM SECTION. LOUVERED SECTION REQUIRES OPERATOR STILE TO BE FACTORY INSTALLED AT THE CENTERLINE OF THE DOOR.



**JAMB BRACKET SCHEDULE**

DOOR HEIGHT (SECTIONS) (EACH JAMB)	NO. OF BRACKETS (EACH JAMB)	TRACK TYPE	LOCATION OF CENTERLINE OF JAMB BRACKETS MEASURED FROM BOTTOM OF TRACK (ALL DIMENSIONS ± 2")
7'-0"	4	QI	2" (JB), 13" (Q), 25-1/2" (JB), 45-1/4" (Q), 65" (JB)
7'-0"	4	FAT	2" (JB), 10" (JB), 25-3/4" (JB), 42" (JB), 63-1/4" (JB)
8'-0"	4 OR 5	QI	2" (JB), 13" (Q), 25" (JB), 34" (JB), 47-1/4" (Q), 67" (Q)
8'-0"	4 OR 5	FAT	2" (JB), 10" (JB), 21-3/4" (JB), 29-3/4" (JB), 48" (JB), 66" (JB)

HIGH LIFT/ROOF PITCH SEE NOTE BELOW

**NOTE:**

(JB) FOLLOWING DIMENSION DENOTES SLOTTED JAMB BRACKET ATTACHED TO TRACK WITH 1/4"-20x9/16" TRACK BOLT AND NUT.

(Q) FOLLOWING DIMENSION DENOTES QUICK INSTALL JAMB BRACKET INSTALLED IN BUTTERFLY SLOT. NO ADDITIONAL HARDWARE NEEDED TO ATTACH TO TRACK.

ALL DOORS WITH HIGH LIFT AND/OR ROOF PITCH REQUIRE USE OF CONTINUOUS WALL ANGLE. SEE SUPPLEMENT TRACK CHART FOR DETAILS.

**SUPERIMPOSED DESIGN PRESSURE LOADS ON SUPPORTING STRUCTURE**

MAX DOOR WIDTH	MAX DOOR HEIGHT	UNIFORM LOAD EACH JAMB (PLF)	POINT LOAD AT HEADER AND SLAB AT EACH POST LOCATION (LBS)
16'-0"	7'-0"	+157.0/-208.0	+1437.3/-1602.3
14'-0"	7'-0"	+157.0/-208.0	+1633.3/-1820.8
12'-0"	7'-0"	+157.0/-208.0	+1257.7/-1402.1
10'-0"	7'-0"	+157.0/-208.0	+1429.2/-1593.2
8'-0"	7'-0"	+157.0/-208.0	+1078.0/-1201.7
7'-0"	7'-0"	+157.0/-208.0	+1225.0/-1365.6
6'-0"	7'-0"	+157.0/-208.0	+898.3/-1001.5
5'-0"	7'-0"	+157.0/-208.0	+1020.8/-1138.0

**REVISIONS**

- P1 ADDED SUPERIMPOSED DESIGN PRESSURE LOADS ON SUPPORTING STRUCTURE AND CLARIFIED NUMBER OF FASTENERS AND CENTER HINGES REQUIRED FOR NARROWER DOOR WIDTHS. MRB 5/10/06
- P2 ADDED IMPACT RESISTANCE TO DOOR. ADDED JB JAMB BRACKET AT 2" LOCATION. ADDED MODEL 6100. MODIFIED NOTE 7 TO STATE THAT LOUVERS ARE NOT IMPACT RESISTANT. GRT 6/6/07
- P3 MODIFIED JAMB BRACKET SCHEDULE FOR FAT OPTION. ADDED LHR TRACK DETAIL SHEET 2. GRT 4/17/08
- P4 ADDED IMPACT RESISTANT GLAZING. ADDED CONCRETE DETAIL SHEET 2. ADDED TEXAS LICENSE NUMBER TO TITLE BLOCK. CHANGED LOUVER NOTE. ADDED HIGH LIFT AND ROOF PITCH TRACK NOTE. GRT 4/29/09
- P5 UPDATED TITLE BLOCK GRT 5/4/10
- P6 ER31223 CHANGED DOOR MODEL NUMBERS, AND BACKER NOTES. ESC 6/7/2017
- REV E - UPDATED REVISION FROM NUMERIC TO ALPHA TLC 092920
- REV F - DRAWING UPDATES FOR TDI TLC 3/23/21
- REV G - DRAWING UPDATES FOR TDI TLC 4/20/21



Junfeng Qian  
4/30/2021

LINING QIAN  
5729 AMHERST AVE  
MCKINNEY, TEXAS 75070  
TEXAS PE 130813

PROFESSIONAL ENGINEER'S SEAL PROVIDED ONLY FOR VERIFICATION OF WINDLOAD CONSTRUCTION DETAILS.

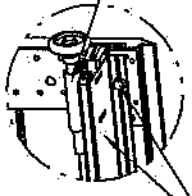
**Wayne Dalton**  
GARAGE DOORS

A DIVISION OF OVERHEAD DOOR CORP  
3305 ADDISON DRIVE  
PENSACOLA, FLORIDA 32514  
(850) 474-9890

STATIC PRESSURE RATINGS:	APPROVED SIZES:	SCALE:	N.T.S.
DESIGN (PSF): +39.20/-43.70	MAX WIDTH: 16'-0"	DATE:	NAME:
TEST (PSF): +58.80/-65.55	MAX HEIGHT: 8'-0"	DRAWN:	GRT
IMPACT/CYCLIC RATED (YES/NO): YES	MAX SECTION HEIGHT: 24" CHECKED	4/20/21	TLC
MODELS 5120/5145/9100/9405/9600	SHEET 1 OF 3	DRAWING PART NO.	REV.
WINDLOAD SPECIFICATION OPTION CODE 0604	319030	G	

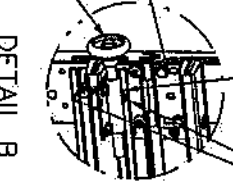
REVISIONS

13 GA ADJUSTABLE TOP  
FIXTURE ATTACHED TO  
PRE-PUNCHED HOLES  
IN BOTTOM OF U-BAR  
WITH (2) 1/4-14x5/8"  
CRIMPITE SCREWS



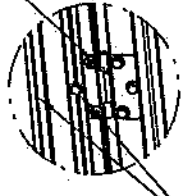
DETAIL A

13 GA ROLLER SLIDE ATTACHED TO  
PRE-PUNCHED HOLES IN TOP OF U-BAR  
WITH (2) 1/4-14x5/8" CRIMPITE SCREWS.  
USE MENDING HOLE IN SLIDE TO ENSURE  
PROPER ALIGNMENT OF ROLLERS



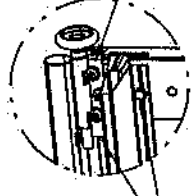
DETAIL B

18 GA HINGE ATTACHED  
WITH (6) 1/4-20x5/8"  
CRIMPITE SCREWS (2 OF  
WHICH ARE FACTORY  
ATTACHED, 3 OF WHICH  
ARE FIELD INSTALLED INTO  
TOP LEAF AND 1 OF  
WHICH IS FIELD INSTALLED  
THRU PRE-PUNCHED HOLE  
IN U-BAR)



DETAIL C

12 GA BOTTOM BRACKET  
FACTORY ATTACHED WITH  
(3) 1/4-14x5/8"  
CRIMPITE SCREWS



DETAIL D

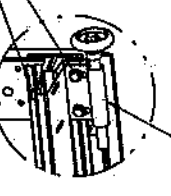
PLACE U-BAR OVER INTEGRAL RIB  
WITH THE (8) PRE-PUNCHED  
HOLES EACH END FACING UPWARD  
AND ATTACH THRU END CAP AT  
EACH END WITH (2) 1/4-14x7/8"  
SELF DRILLING CRIMPITE SCREWS  
FOR STANDARD TRACK AND (3)  
1/4-14x7/8" SELF DRILLING  
CRIMPITE SCREWS FOR LOW  
HEADROOM TRACK (2 OF WHICH  
ARE USED TO ATTACH THE TOP  
BRACKET AS SHOWN).

PLACE U-BAR OVER INTEGRAL  
RIB WITH THE (8) PRE-PUNCHED  
HOLES EACH END FACING UPWARD  
AND ATTACH THRU END CAP AT  
EACH END WITH (2) 1/4-14x7/8"  
SELF DRILLING CRIMPITE SCREWS  
EXCEPT: U-BAR PLACED  
OVER TOP RIB ON THE BOTTOM  
SECTION SHALL ONLY BE  
ATTACHED THRU END CAP AT  
EACH END WITH (1) 1/4-14x7/8"  
SELF DRILLING CRIMPITE SCREW  
LOCATED ON THE BOTTOM FLANGE  
OF THE U-BAR

NOTE: DUE TO CLEARANCES  
REQUIRED TO INSTALL SCREWS AT  
THE ENDS OF THE U-BARS, ALL  
U-BARS SHALL BE INSTALLED ON  
SECTIONS PRIOR TO INSTALLING  
ROLLER SLIDES AND TOP FIXTURE  
ON THE U-BARS. SEE  
ATTACHMENT NOTES ON THIS  
SHEET.

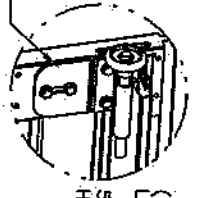
PLACE U-BAR OVER INTEGRAL  
RIB AND ATTACH WITH (2)  
1/4-20x5/8" CRIMPITE SCREWS  
THRU PRE-PUNCHED HOLES AT  
EACH INTERMEDIATE HINGE  
LOCATION (1 THRU FLANGE OF  
U-BAR AND BOTTOM HINGE LEAF  
AND 1 THRU WEB OF U-BAR AND  
INTEGRAL RIB OF SECTION)  
EXCEPTION: AT ALL LOCATIONS  
REQUIRING A STRAP BRACKET, (1)  
1/4-14x7/8" SELF DRILLING  
CRIMPITE SCREW WILL BE USED.

13 GA ADJUSTABLE  
TOP FIXTURE



DETAIL A

USED ONLY ON IMPACT  
GLAZED SECTION - 11  
GA REINFORCEMENT  
BRACKET ATTACHED  
WITH (4) 1/4-14x7/8"  
SELF DRILLING  
CRIMPITE SCREWS (2  
THROUGH BOTH  
BRACKET AND U-BAR)

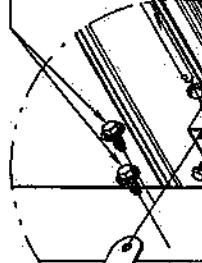


DETAIL J

(3) 1/4-14x7/8" SELF DRILLING CRIMPITE  
SCREW THRU ADDITIONAL STRAP BRACKET,  
U-STRUT & OPERATOR BRACKET.  
NOTE: ADDITIONAL STRAP BRACKET, U-STRUT,  
OPERATOR BRACKET, & SCREWS ONLY REQUIRED  
ON IMPACT GLAZED SECTIONS. SEE NOTE 1  
SHEET 1

(3) 1/4-14x7/8"  
SELF DRILLING  
CRIMPITE SCREWS

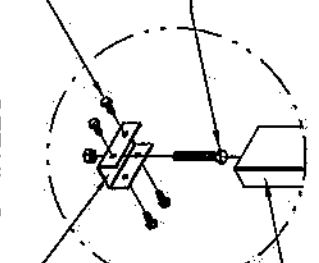
(2) 5/16-12x1"  
SELF DRILLING  
SCREWS W/ 5/16  
FLAT WASHERS



DETAIL E

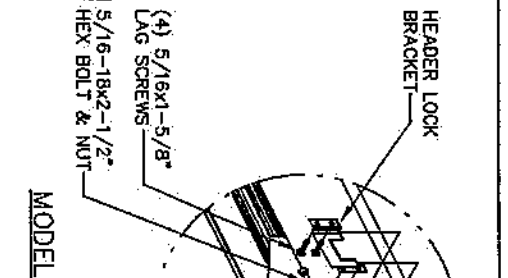
CONCRETE DETAIL

(4) 5/16-12x1"  
SELF DRILLING  
SCREWS



DETAIL G

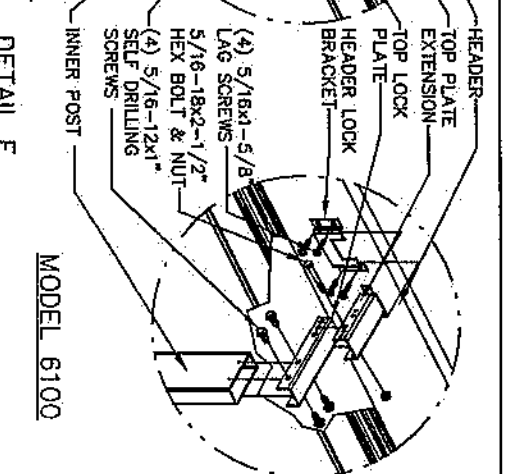
HEADER LOCK  
BRACKET



DETAIL I

MODELS 5120/9100

HEADER  
TOP PLATE  
EXTENSION-  
TOP LOCK  
PLATE  
HEADER LOCK  
BRACKET

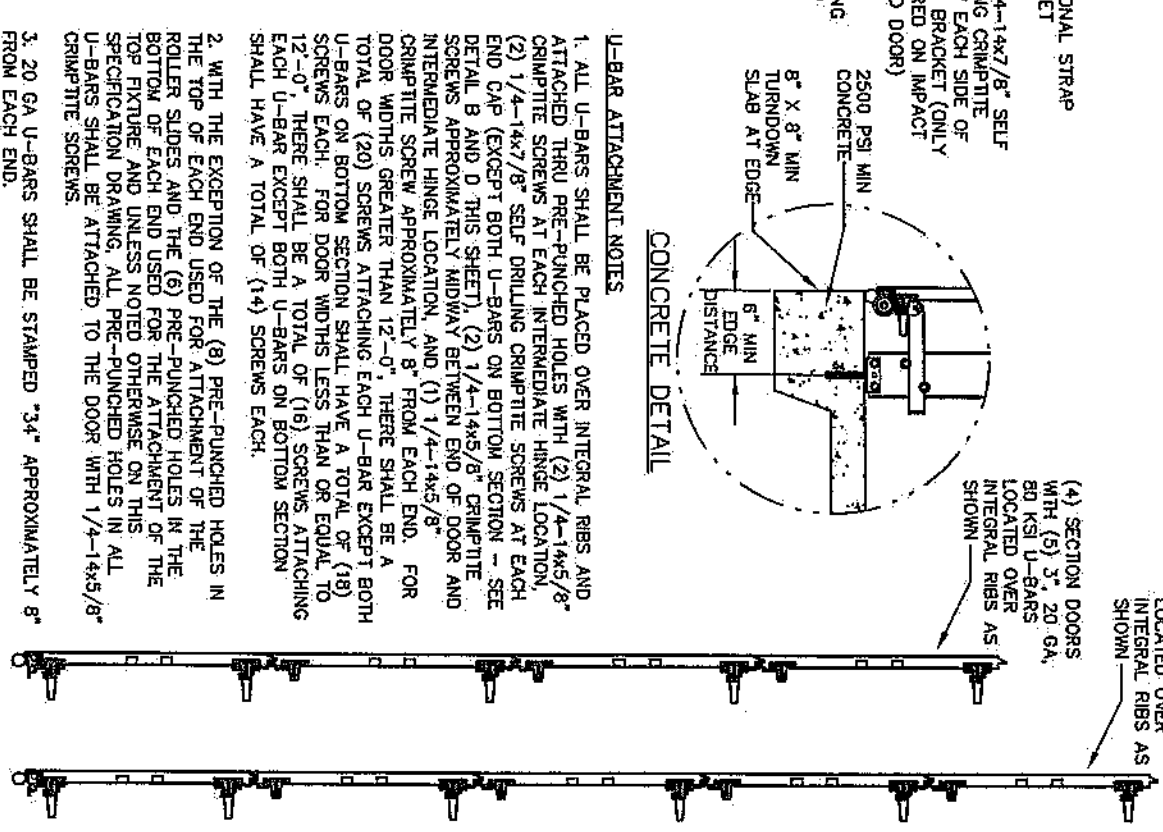


DETAIL E

MODEL 6100

(3) SECTION DOORS  
WITH (6) 3", 20 GA,  
80 KSI U-BARS  
LOCATED OVER  
INTEGRAL RIBS AS  
SHOWN

(4) SECTION DOORS  
WITH (5) 3", 20 GA,  
80 KSI U-BARS  
LOCATED OVER  
INTEGRAL RIBS AS  
SHOWN



**U-BAR ATTACHMENT NOTES**

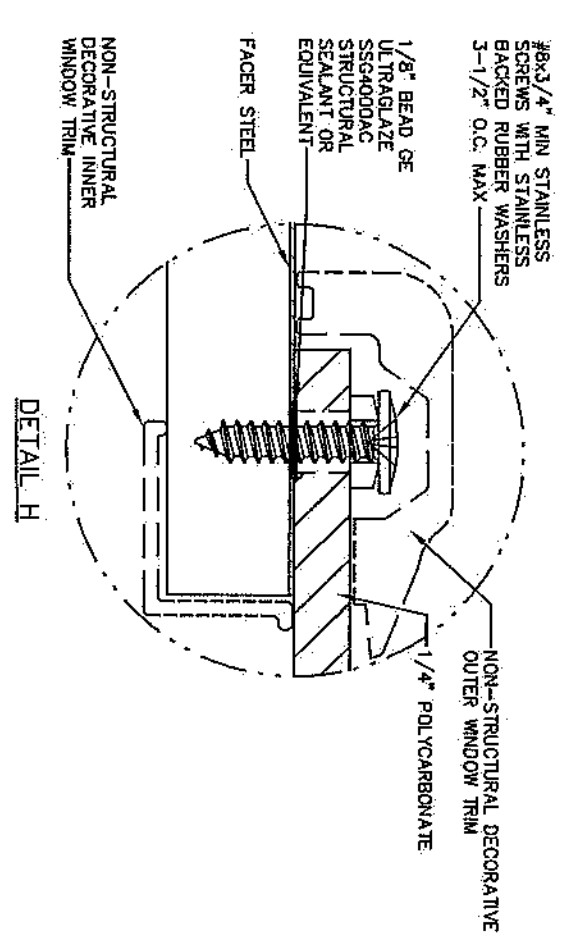
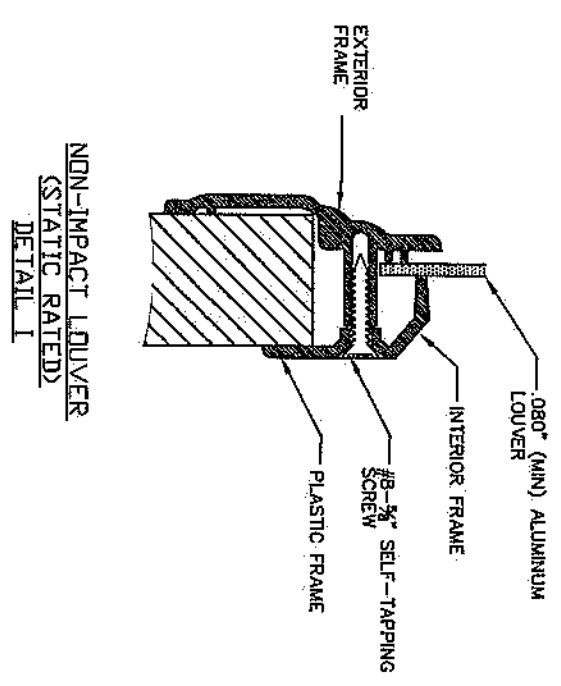
1. ALL U-BARS SHALL BE PLACED OVER INTEGRAL RIBS AND ATTACHED THRU PRE-PUNCHED HOLES WITH (2) 1/4-14x5/8" CRIMPITE SCREWS AT EACH INTERMEDIATE HINGE LOCATION, (2) 1/4-14x7/8" SELF DRILLING CRIMPITE SCREWS AT EACH END CAP (EXCEPT BOTH U-BARS ON BOTTOM SECTION - SEE DETAIL B AND D THIS SHEET), (2) 1/4-14x5/8" CRIMPITE SCREWS APPROXIMATELY MIDWAY BETWEEN END OF DOOR AND INTERMEDIATE HINGE LOCATION, AND (1) 1/4-14x5/8" CRIMPITE SCREW APPROXIMATELY 8" FROM EACH END. FOR DOOR WIDTHS GREATER THAN 12'-0", THERE SHALL BE A TOTAL OF (20) SCREWS ATTACHING EACH U-BAR EXCEPT BOTH U-BARS ON BOTTOM SECTION SHALL HAVE A TOTAL OF (14) SCREWS EACH.
2. WITH THE EXCEPTION OF THE (8) PRE-PUNCHED HOLES IN THE TOP OF EACH END USED FOR ATTACHMENT OF THE ROLLER SLIDES AND THE (6) PRE-PUNCHED HOLES IN THE BOTTOM OF EACH END USED FOR THE ATTACHMENT OF THE TOP FIXTURE AND UNLESS NOTED OTHERWISE ON THIS SPECIFICATION DRAWING, ALL PRE-PUNCHED HOLES IN ALL U-BARS SHALL BE ATTACHED TO THE DOOR WITH 1/4-14x5/8" CRIMPITE SCREWS.
3. 20 GA U-BARS SHALL BE STAMPED "34" APPROXIMATELY 8" FROM EACH END.



Junfeng Qian  
4/30/2021  
JUNFENG QIAN  
5729 AMPHORA AVE  
MCKINNEY, TEXAS 75070  
TEXAS PE 130813  
PROFESSIONAL ENGINEER'S SEAL PROVIDED ONLY FOR  
VERIFICATION OF WINDLOAD CONSTRUCTION DETAILS.

**Wayne Dalton**  
GARAGE DOORS  
A DIVISION OF OVERHEAD DOOR CORP.  
3395 ADDISON DRIVE  
PENSACOLA, FLORIDA 32514  
(850) 474-9890

STATIC PRESSURE RATINGS	APPROVED SIZES	SCALE: N.T.S.	SIZE: A
DESIGN (PSF): +39.20/-43.70	MAX WIDTH: 16'-0"		
TEST (PSF): +58.80/-65.55	MAX HEIGHT: 8'-0"	DRAWN: 3/3/06	NAME: GRT
IMPACT/CYCLIC RATED (YES/NO): YES	MAX SECTION HEIGHT: 24"	CHECKED: 4/20/21	TLC
MODELS 5120/5145/9100/9405/9600		SHEET 2 OF 3	
WINDLOAD SPECIFICATION OPTION CODE 0604		DRAWING PART NO. 319030	REV. G



Junfeng Qian  
4/30/2021  
JUNFENG QIAN  
5729 AMPHORA AVE  
MCKINNEY, TEXAS 75070  
TEXAS PE 130813  
PROFESSIONAL ENGINEER'S SEAL PROVIDED ONLY FOR VERIFICATION OF WINDOW CONSTRUCTION DETAILS.

**Wayne Dalton**  
GARAGE DOORS  
A DIVISION OF OVERHEAD DOOR CORP.  
3395 ADDISON DRIVE  
PENSACOLA, FLORIDA 32514  
(850) 474-9890

STATIC PRESSURE RATINGS		APPROVED SIZES		SCALE: N.T.S.		SIZE: A	
DESIGN (PSF):	+39.20/-43.70	MAX WIDTH:	16'-0"	DATE		NAME	
TEST (PSF):	+58.80/-65.55	MAX HEIGHT:	8'-0"	DRAWN	3/3/06	GRT	
IMPACT/CYCLIC RATED (YES/NO):	YES	MAX SECTION HEIGHT:	24"	CHECKED	4/20/21	TLC	
MODELS 5120/5145/9100/9405/9600				SHEET 3 OF 3		REV.	
WINDLOAD SPECIFICATION OPTION CODE 0604				DRAWING PART NO.		319030	
				REV.		G	