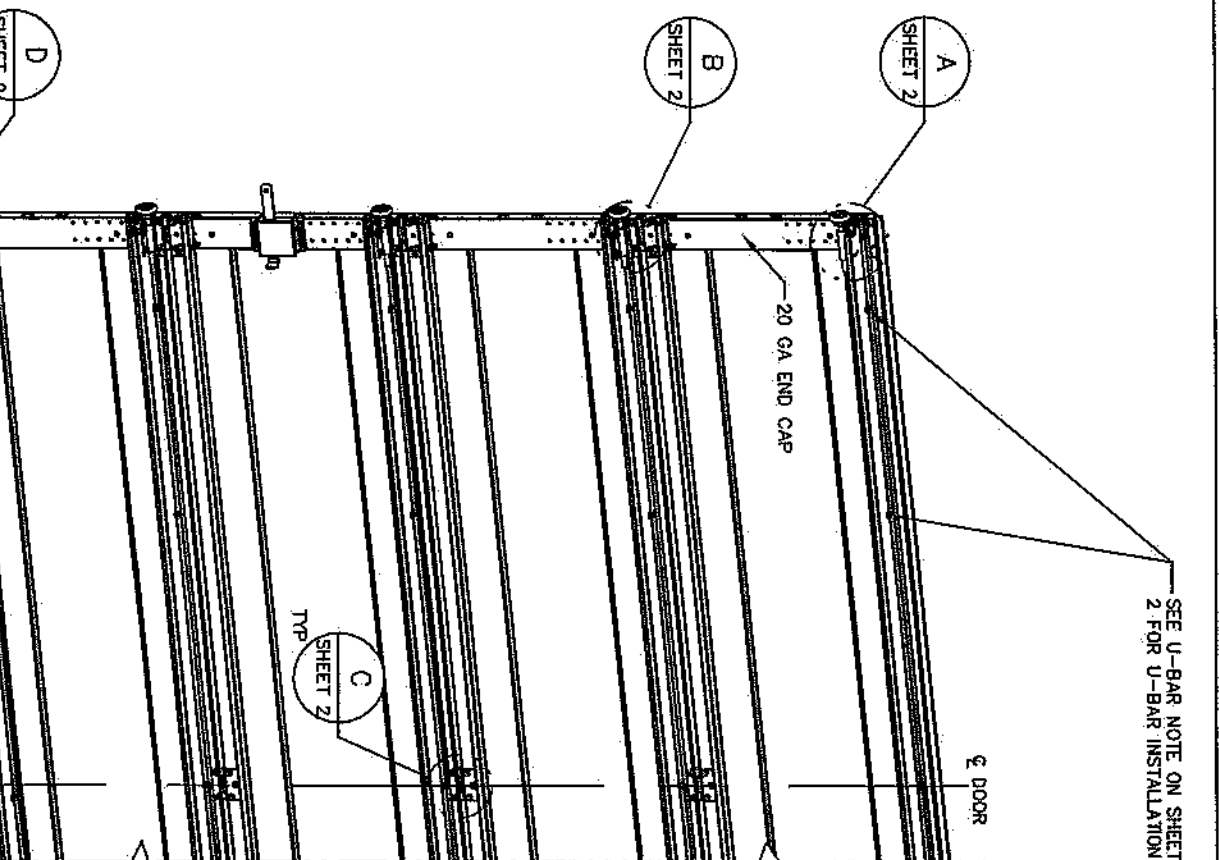
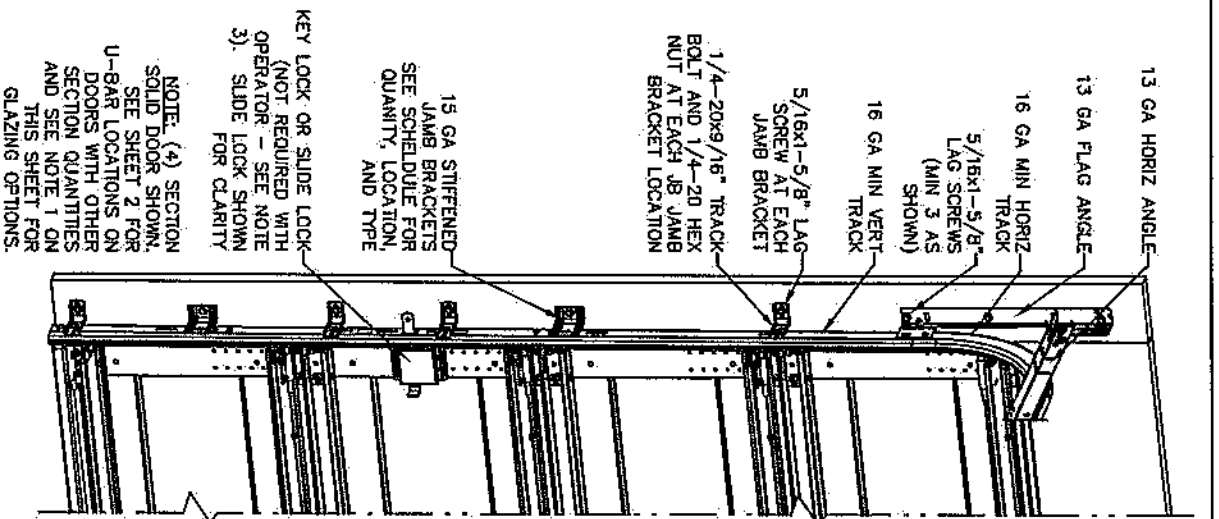


- NOTES:
1. IMPACT RESISTANT GLAZING (DETAIL E) - IMPACT RESISTANT GLAZING SYSTEM MAY BE INSTALLED IN TOP OR INTERMEDIATE SECTION (WITH OR WITHOUT DECORATIVE INSERTS). GLAZING SHALL BE 1/4" MARROLON-AR POLYCARBONATE OR EQUAL. GLAZING SHALL HAVE A MAXIMUM HEIGHT OF 15.21" AND A MAXIMUM LENGTH OF 50.08" SCREWED TOGETHER WITH A MINIMUM OF (10) #9X1" SCREWS ((3) ALONG EACH HORIZONTAL LEG AND (2) ALONG EACH VERTICAL LEG). GLAZING IS IMPACT RESISTANT AND DOES MEET THE REQUIREMENTS FOR WIND-BORNE DEBRIS REGIONS. GLAZED SECTION REQUIRES REINFORCEMENT BRACKETS ATTACHED TO U-BAR ON UPPER INTEGRAL RIB (SEE DETAIL G SHEET 2). 18 GA J-STRUT SCREWED TO LOWER INTEGRAL RIB OF SECTION AND OPERATOR STILE TO BE FACTORY INSTALLED.
 2. VINYL OR WOOD DOOR STOP NAILED A MAXIMUM OF 6" O.C. MUST OVERLAP TOP AND BOTH ENDS OF PANELS MINIMUM 7/16" TO MEET NEGATIVE PRESSURES.
 3. KEY LOCK, SLIDE LOCK, OR OPERATOR REQUIRED.
 4. SECTION SHALL BE CONSTRUCTED WITH FOAMED IN PLACE POLYURETHANE FOAM INSULATION CHEMICALLY BONDED TO 30 GA MINIMUM FACER STEEL AND A POLYLAMINATE OR 32 GA STEEL BACKER. END CAP TO HAVE A MINIMUM 1.4" DEPTH.
 5. THE DESIGN OF THE SUPPORTING STRUCTURAL ELEMENTS SHALL BE THE RESPONSIBILITY OF THE PROFESSIONAL OF RECORD FOR THE BUILDING OR STRUCTURE AND IN ACCORDANCE WITH CURRENT BUILDING CODES FOR THE LOADS LISTED ON THIS DRAWING.
 6. DOOR JAMB TO BE MINIMUM 2x6 STRUCTURAL GRADE LUMBER. REFER TO JAMB CONNECTION SUPPLEMENT FOR ATTACHMENT TO SUPPORTING STRUCTURE.
 7. LOUVER OPTION (DETAIL H) - .08" MINIMUM LOUVERS IN MOLDED FRAMES, 19"x13.9" (OLO=15 1/2" X 10 1/2"), SCREWED TOGETHER WITH A MINIMUM OF (12) #8X1" SCREWS ((3) ALONG EACH HORIZONTAL LEG AND (3) ALONG EACH VERTICAL LEG). LOUVERS ARE NOT IMPACT RESISTANT AND DO NOT MEET THE REQUIREMENTS FOR WIND-BORNE DEBRIS REGIONS. LOUVERS ARE ONLY INSTALLED IN THE BOTTOM SECTION.

- 13 GA HORIZ ANGLE
13 GA FLAG ANGLE
16 GA MIN HORIZ TRACK
5/16x1-5/8" LAG SCREWS (MIN 3 AS SHOWN)
16 GA MIN VERT TRACK
5/16x1-5/8" LAG SCREW AT EACH JAMB BRACKET
1/4-20x9/16" TRACK BOLT AND 1/4-20 HEX NUT AT EACH JAMB BRACKET LOCATION
15 GA STIFFENED JAMB BRACKETS SEE SCHEDULE FOR QUANTITY, LOCATION, AND TYPE
KEY LOCK OR SLIDE LOCK (NOT REQUIRED WITH OPERATOR - SEE NOTE 3). SLIDE LOCK SHOWN FOR CLARITY



SUPERIMPOSED DESIGN PRESSURE LOADS ON SUPPORTING STRUCTURE

MAX DOOR HEIGHT	DOOR WIDTH	UNIFORM LOAD EACH JAMB (PLF)
8'-0"	ALL	+164.0/-185.2
9'-0"	ALL	+184.5/-208.4

JAMB BRACKET SCHEDULE

DOOR HEIGHT	NO. OF SECTIONS (EACH JAMB)	NO. OF BRACKETS (EACH JAMB)	TRACK TYPE	LOCATION OF CENTERLINE OF JAMB BRACKETS MEASURED FROM BOTTOM OF TRACK (ALL DIMENSIONS ± 2")
7'-0"	4	6	Q1	2" (JB), 13" (Q1), 25-1/2" (JB), 34" (JB), 45-1/4" (Q1), 63" (JB)
7'-0"	4	6	FAT	2" (JB), 10" (JB), 21-3/4" (JB), 29-3/4" (JB), 42" (JB), 63-1/4" (JB)
8'-0"	4 OR 5	8	Q1	2" (JB), 13" (Q1), 23" (JB), 34" (JB), 47-1/4" (Q1), 58" (JB), 67" (Q1), 75" (JB)
8'-0"	4 OR 5	8	FAT	2" (JB), 10" (JB), 21-3/4" (JB), 29-3/4" (JB), 48" (JB), 57-1/4" (JB), 66" (JB), 75-1/2" (JB)

> 8'-0" / HIGH LIFT / ROOF PITCH SEE NOTE BELOW

NOTE:
(JB) FOLLOWING DIMENSION DENOTES SLOTTED JAMB BRACKET ATTACHED TO TRACK WITH 1/4-20x9/16" TRACK BOLT AND NUT.
(Q1) FOLLOWING DIMENSION DENOTES QUICK INSTALL JAMB BRACKET INSTALLED IN BUTTERFLY SLOT. NO ADDITIONAL HARDWARE NEEDED TO ATTACH TO TRACK.
ALL DOORS WITH HIGH LIFT, ROOF PITCH, AND/OR GREATER THAN 8' IN HEIGHT REQUIRE USE OF CONTINUOUS WALL ANGLE. SEE SUPPLEMENT TRACK CHART FOR DETAILS.



Junfeng Qian
4/30/2021
JUNFENG QIAN
5729 AMHERST AVE
MCKENNEY, TEXAS 75070
TEXAS PE 130813
PROFESSIONAL ENGINEER'S SEAL PROVIDED ONLY FOR VERIFICATION OF WINDLOAD CONSTRUCTION DETAILS.

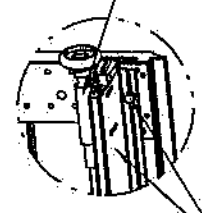
COMPLIES WITH THE REQUIREMENTS OF IBC/IRC 2018

Wayne Dalton
GARAGE DOORS
A DIVISION OF OVERHEAD DOOR CORP
3395 ADDISON DRIVE
PENSACOLA, FLORIDA 32514
(850) 474-9890

STATIC PRESSURE RATINGS	APPROVED SIZES	SCALE: N.T.S.	SIZE: A
DESIGN (PSF): +41.00/-46.30	MAX WIDTH: 9'-0"	DATE	NAME
TEST (PSF): +61.50/-69.45	MAX HEIGHT: 10'-0"	3/3/06	GRT
IMPACT/CYCLIC RATED (YES/NO): YES	MAX SECTION HEIGHT: 24" CHECKED	4/20/21	TLC
MODELS 5120/5145/9100/9405/9600	SHEET 1 OF 2		
WINDLOAD SPECIFICATION OPTION CODE 0601	DRAWING PART NO. 319027		REV. G

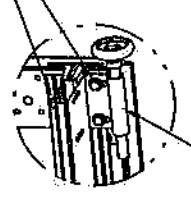
- REVISIONS
- P1 ADDED IMPACT RESISTANCE TO DOOR. ADDED MODEL 6100. MODIFIED NOTE 6 TO STATE THAT LOUVERS ARE NOT IMPACT RESISTANT. GRT 6/5/07
 - P2 INCREASED MAX DOOR HEIGHT TO 10'. MODIFIED JAMB BRACKET SCHEDULE FOR FAT OPTION. ADDED LHR TRACK DETAIL. SHEET 2. GRT 4/17/08
 - P3 ADDED IMPACT RESISTANT GLAZING. ADDED TEXAS LICENSE NUMBER TO TITLE BLOCK. CHANGED LOUVER NOTE. ADDED HIGH LIFT AND ROOF PITCH TRACK NOTE. GRT 4/29/09
 - P4 UPDATED TITLE BLOCK. GRT 5/4/10
 - P5 ER31223 CHANGED DOOR MODEL NUMBERS, AND BACKER NOTES. ESC 6/7/2017 ESC 5/23/17
 - REV E - UPDATED REVISION FROM NUMERIC TO ALPHA. TLC 092920
 - REV F - DRAWING UPDATES FOR TDI. TLC 3/23/21
 - REV G - DRAWING UPDATES FOR TDI. TLC 4/20/21

13 GA ADJUSTABLE TOP FIXTURE ATTACHED TO PRE-PUNCHED HOLES IN BOTTOM OF U-BAR WITH (2) 1/4-14x5/8" CRIMPITE SCREWS



DETAIL A

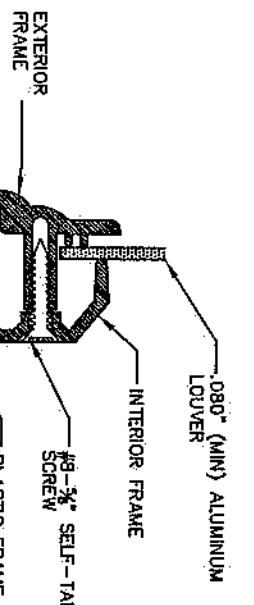
PLACE U-BAR OVER INTEGRAL RIB WITH THE (8) PRE-PUNCHED HOLES EACH END FACING UPWARD AND ATTACH THRU END CAP AT EACH END WITH (2) 1/4-14x7/8" SELF DRILLING CRIMPITE SCREWS FOR STANDARD TRACK AND (3) 1/4-14x7/8" SELF DRILLING CRIMPITE SCREWS FOR LOW HEADROOM TRACK (2 OF WHICH ARE USED TO ATTACH THE TOP BRACKET AS SHOWN).



DETAIL A

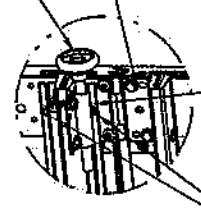
13 GA ADJUSTABLE TOP FIXTURE

LOW HEADROOM TRACK



EXTERIOR FRAME

13 GA ROLLER SLIDE ATTACHED TO PRE-PUNCHED HOLES IN TOP OF U-BAR WITH (2) 1/4-14x5/8" CRIMPITE SCREWS. USE VIEWING HOLE IN SLIDE TO ENSURE PROPER ALIGNMENT OF ROLLERS



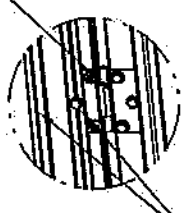
DETAIL B

PLACE U-BAR OVER INTEGRAL RIB WITH THE (8) PRE-PUNCHED HOLES EACH END FACING UPWARD AND ATTACH THRU END CAP AT EACH END WITH (2) 1/4-14x7/8" SELF DRILLING CRIMPITE SCREWS. U-BAR PLACED OVER TOP RIB ON THE BOTTOM SECTION SHALL ONLY BE ATTACHED THRU END CAP AT EACH END WITH (1) 1/4-14x7/8" SELF DRILLING CRIMPITE SCREW LOCATED ON THE BOTTOM FLANGE OF THE U-BAR. NOTE: DUE TO CLEARANCES REQUIRED TO INSTALL SCREWS AT THE ENDS OF THE U-BARS, ALL U-BARS SHALL BE INSTALLED ON SECTIONS PRIOR TO INSTALLING ROLLER SLIDES AND TOP FIXTURE ON THE U-BARS. SEE ATTACHMENT NOTES ON THIS SHEET.



DETAIL C

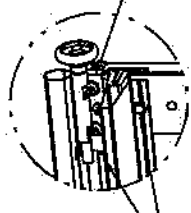
18 GA HINGE ATTACHED WITH (6) 1/4-20x5/8" CRIMPITE SCREWS (2 OF WHICH ARE FACTORY ATTACHED, 3 OF WHICH ARE FIELD INSTALLED INTO TOP LEAF, AND 1 OF WHICH IS FIELD INSTALLED THRU PRE-PUNCHED HOLE IN U-BAR)



DETAIL C

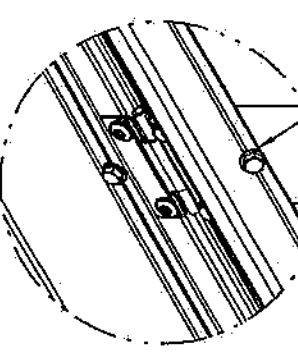
PLACE U-BAR OVER INTEGRAL RIB AND ATTACH WITH (2) 1/4-20x5/8" CRIMPITE SCREWS THRU PRE-PUNCHED HOLES AT EACH INTERMEDIATE HINGE LOCATION (1 THRU FLANGE OF U-BAR AND BOTTOM HINGE LEAF AND 1 THRU WEB OF U-BAR AND INTEGRAL RIB OF SECTION)

12 GA BOTTOM BRACKET FACTORY ATTACHED WITH (3) 1/4-14x5/8" CRIMPITE SCREWS



DETAIL D

PLACE U-BAR OVER INTEGRAL RIB WITH NOTCH DOWN TO CLEAR BOTTOM BRACKET AND ATTACH THRU END CAP AT EACH END WITH (1) 1/4-14x7/8" SELF DRILLING CRIMPITE SCREW AS SHOWN AND USE (1) 1/4-14x7/8" SELF DRILLING CRIMPITE SCREW ACROSS THE BOTTOM OF THE BOTTOM U-BAR AT EACH PRE-PUNCHED HOLE AT EVERY HINGE LOCATION. USE (1) 1/4-20x5/8" CRIMPITE SCREW AT ALL OTHER PRE-PUNCHED HOLE LOCATIONS.



DETAIL F

U-BAR ATTACHMENT NOTES:

1. ALL U-BARS SHALL BE PLACED OVER INTEGRAL RIBS AND ATTACHED THRU PRE-PUNCHED HOLES WITH (2) 1/4-14x5/8" CRIMPITE SCREWS AT EACH INTERMEDIATE HINGE LOCATION, (2) 1/4-14x7/8" SELF DRILLING CRIMPITE SCREWS AT EACH END CAP (EXCEPT BOTH U-BARS ON BOTTOM SECTION - SEE DETAIL B AND D THIS SHEET), (2) 1/4-14x5/8" CRIMPITE SCREWS APPROXIMATELY MIDWAY BETWEEN END OF DOOR AND INTERMEDIATE HINGE LOCATION, AND (1) 1/4-14x5/8" CRIMPITE SCREW APPROXIMATELY 8" FROM EACH END. THERE SHALL BE A TOTAL OF (12) SCREWS ATTACHING EACH U-BAR EXCEPT BOTH U-BARS ON BOTTOM SECTION SHALL HAVE A TOTAL OF (10) SCREWS EACH.
2. WITH THE EXCEPTION OF THE (8) PRE-PUNCHED HOLES IN THE TOP OF EACH END USED FOR ATTACHMENT OF THE ROLLER SLIDES AND THE (6) PRE-PUNCHED HOLES IN THE BOTTOM OF EACH END USED FOR THE ATTACHMENT OF THE TOP FIXTURE AND UNLESS NOTED OTHERWISE ON THIS SPECIFICATION DRAWING, ALL PRE-PUNCHED HOLES IN ALL U-BARS SHALL BE ATTACHED TO THE DOOR WITH 1/4-14x5/8" CRIMPITE SCREWS.
3. 18 GA U-BARS SHALL BE STAMPED "46" APPROXIMATELY 8" FROM EACH END.

NON-IMPACT LOUVER (STATIC RATED)

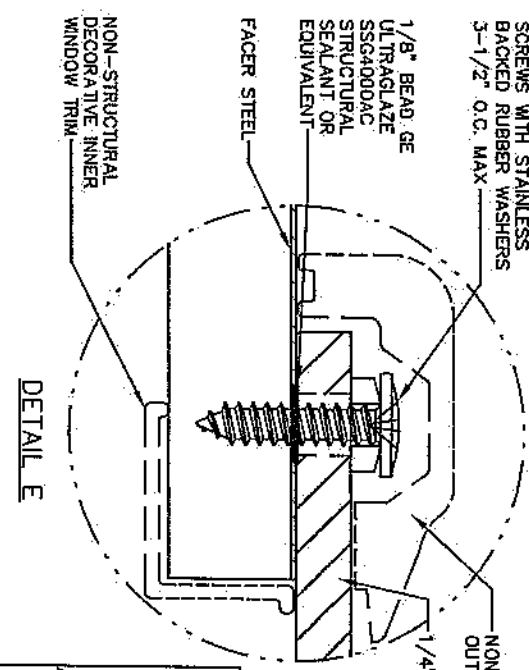
DETAIL H

(4) SECTION DOORS WITH (6) 3" 18 GA, 80 KSI U-BARS LOCATED OVER INTEGRAL RIBS AS SHOWN

(5) SECTION DOORS WITH (6) 3" 18 GA, 80 KSI U-BARS LOCATED OVER INTEGRAL RIBS AS SHOWN



JUNFENG QIAN
3729 AMPHORA AVE
MCKINNEY, TEXAS 75070
TEXAS PE 130813



DETAIL E

Wayne Dalton
GARAGE DOORS
A DIVISION OF OVERHEAD DOOR CORP
3385 ADDISON DRIVE
PENSACOLA, FLORIDA 32514
(850) 474-9890

STATIC PRESSURE RATINGS		APPROVED SIZES		SCALE: N.T.S.		SIZE: A	
DESIGN (PSF):	+41.00/-46.30	MAX WIDTH:	9'-0"	DATE:		NAME:	
TEST (PSF):	+61.50/-69.45	MAX HEIGHT:	10'-0"	DRAWN:	3/3/06	GRT:	
IMPACT/CYCLIC RATED (YES/NO):	YES	MAX SECTION HEIGHT:	24" (CHECKED)	CHECKED:	4/20/21	TLC:	
MODELS 5120/5145/9100/9405/9600				SHEET 2 OF 2		REV.	
WINDLOAD SPECIFICATION OPTION CODE 0601				DRAWING PART NO.		319027	
				REV.		G	