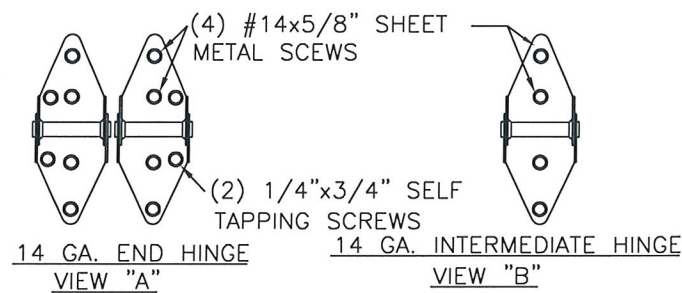
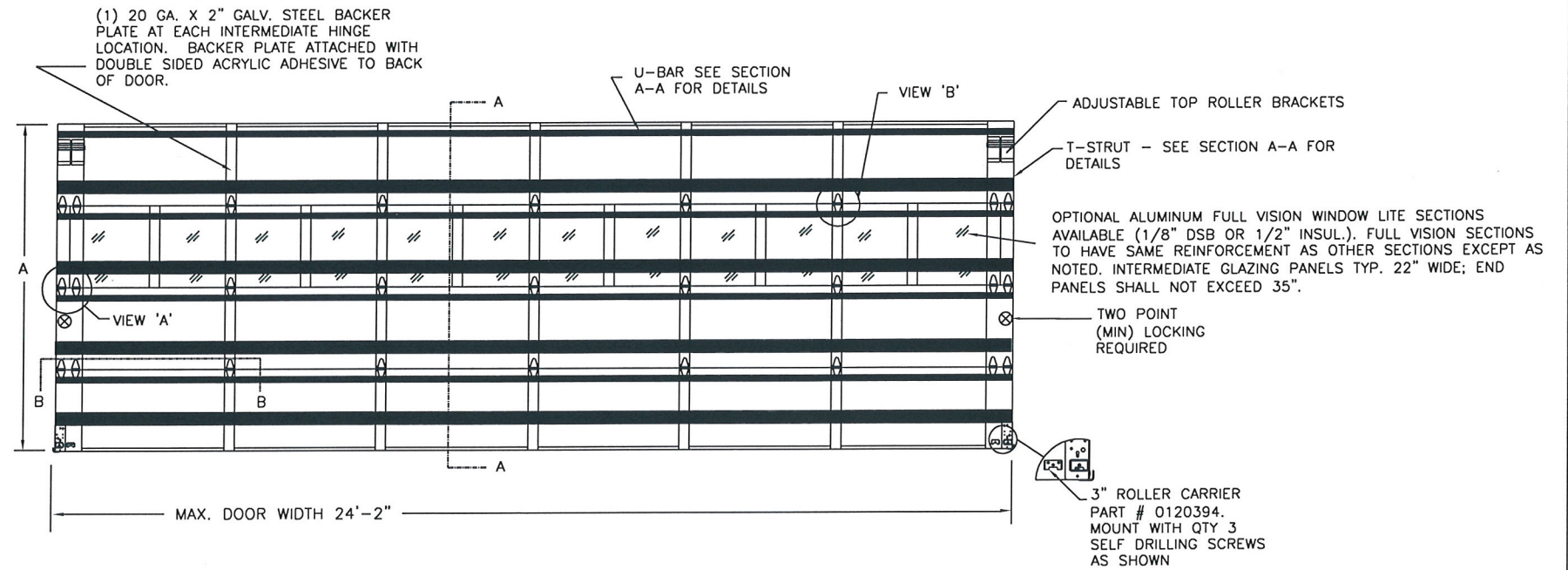


CLOPAY MODEL 3200, 3220  
HOLMES MODEL 240

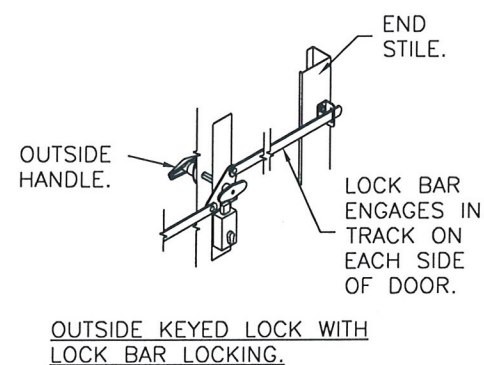
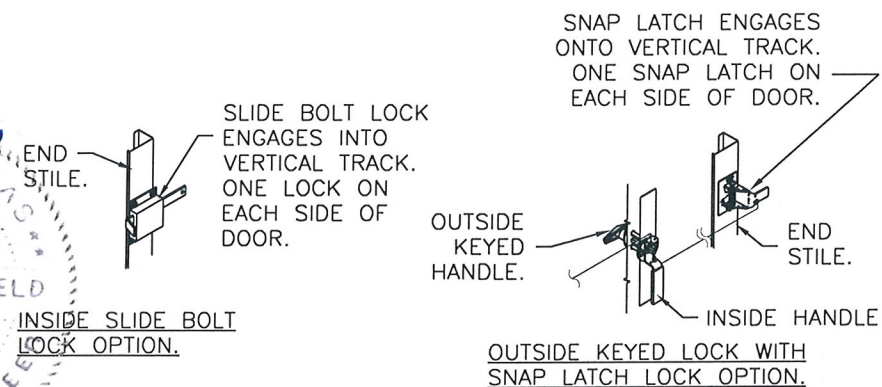
REVISIONS					
REV. NO.	ZONE:	DATE:	ECN NO.	APPVD:	DESCRIPTION
00	-	2/8/17	-	-	INITIAL RELEASE



DOOR WIDTH	NUMBER OF INTERMEDIATE HINGES
20'-3" THRU 24'-2"	5

DOOR HEIGHT 'A'	NUMBER OF SECTIONS
UP TO 8'-0"	4
8'-3" THRU 10'-0"	5
10'-3" THRU 12'-0"	6
12'-3" THRU 14'-0"	7
14'-3" THRU 16'-0"	8
16'-3" THRU 18'-0"	9

MAX. SECTION HEIGHT: 24"



DESIGN LOADS: +25.0, -25.0 PSF  
TEST LOADS: +37.5, -37.5 PSF

Unless Stated Otherwise TOLERANCES are

.0 = ±.031  
.00 = ±.015  
.000 = ±.005  
.0000 = ±.001  
Degrees = ±1/2'

Unless Stated Otherwise DIMENSIONS ARE IN INCHES.



MANUFACTURING PRODUCT CODE:  
MPC: C-DSIE-1F447

**Clopay**  
Building Products Company  
8585 Duke Boulevard  
Mason, OH 45040 USA  
Tel. No. 513-770-4800  
Fax No. 513-770-4853

CLOPAY WINDLOAD RATING  
W4

DESCRIPTION: MODEL 240/3200/3220 WINDLOAD 24'-2"

DRAWN BY: RJH	DATE: 2/8/17	SCALE: NONE	DWG. SIZE B
CHECKED BY: -	DATE: -	SHEET 1 OF 4	
DWG. NO.: 105197	VER: TDI		

STATE OF TEXAS  
MARK WESTERFIELD  
P.E.  
2/21/17

DESIGN ENGINEER: MARK WESTERFIELD, P.E.  
FLORIDA P.E. #48495, NC P.E. #23832, TEXAS P.E. #91513

CLOPAY CORP.  
ALL RIGHTS RESERVED.

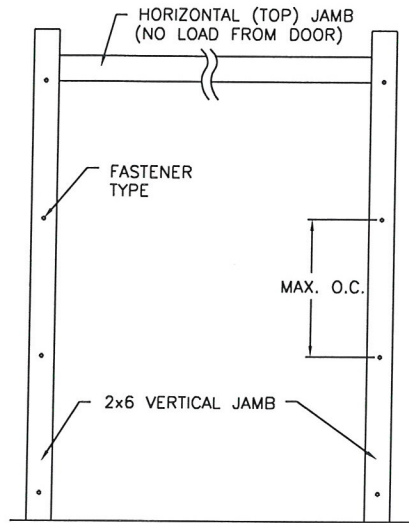
CLOPAY MODEL 3200, 3220  
HOLMES MODEL 240, 240G

REVISIONS					
REV. NO.	ZONE:	DATE:	ECN NO.	APPVD:	DESCRIPTION
00	-	-	-	-	SEE REVISION HISTORY ON SHEET 1

**JAMB TO SUPPORTING STRUCTURE ATTACHMENT**

- NOTES:**
1. ALL THE LOAD FROM THE DOOR IS TRANSFERRED TO THE TRACK AND THEN FROM THE TRACK TO THE 2x6 VERTICAL SYP (GRADE #2 OR BETTER) JAMBS. NO LOAD FROM THE DOOR IS TRANSFERRED TO THE HORIZONTAL (TOP) JAMB.
  2. EACH VERTICAL JAMB SEES A MAXIMUM DESIGN LOAD OF +300 LB & -300 LB. PER LINEAR FOOT OF JAMB.
  3. ALL JAMB FASTENERS MAY BE (BUT ARE NOT REQUIRED TO BE) COUNTERSUNK TO PROVIDE A FLUSH MOUNTING SURFACE.
  4. A 1/3 STRESS INCREASE FOR WIND LOAD WAS NOT USED IN THE CALCULATION OF ALLOWABLE LOADS FOR ANCHORS AND FASTENERS FOR STEEL, CONCRETE AND MASONRY.

**NOTE:** 2x6 WOOD JAMBS ARE NOT REQUIRED WITH CONTINUOUS ANGLE MOUNT TRACK. HOWEVER, IF DESIRED ON STEEL JAMBS OR CONCRETE OR BLOCK WALLS, APPROVED FASTENERS AS DETAILED BELOW SHOULD BE INCREASED IN LENGTH BY 1-1/2" AND INSTALLED DIRECTLY THROUGH THE ANGLE AND 2x6 WOOD JAMBS INTO THE STEEL JAMBS OR CONCRETE OR BLOCK WALLS. ANCHORS CAN BE (BUT ARE NOT REQUIRED TO BE) COUNTERSUNK TO PROVIDE A FLUSH MOUNTING SURFACE. CONTINUOUS ANGLE TRACK CAN BE ANCHORED DIRECTLY TO GROUT REINFORCED BLOCK WALL OR 3,000 PSI MIN. CONCRETE COLUMN OR STEEL JAMBS.



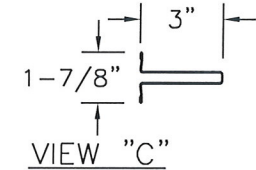
1.95" THICK, 1# DENSITY EXPANDED POLYSTYRENE FOAM INSULATION LAMINATED TO BOTH EXTERIOR AND INTERIOR SKINS.

SILICONE FILLED CHANNEL SEPARATES FRONT AND BACK SKIN OF DOOR

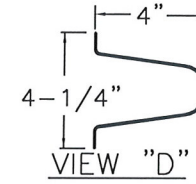
3" TALL x 20 GA. GALV. STEEL U-BAR. ATTACHED ONE AT THE TOP OF EACH SECTION EACH U-BAR ATTACHED WITH (2) 1/4"x3/4" SELF TAPPING SCREWS AT EACH BACKER PLATE & 4 SCREWS ON EACH END STILE

12 GA. GALV. STEEL TOP ROLLER BRACKET. EACH BRACKET ATTACHED W/(4) #14x5/8" SHEET METAL SCREWS. ADJUSTABLE SLIDE ATTACHED TO TOP BRACKET WITH (2) 1/4"x1/2" BOLTS AND NUTS PER BRACKET. (2 BRACKETS PER SIDE)

TONGUE AND GROOVE JOINTS



VIEW "C"  
3" TALL U-BAR  
20 GA. GALV. STEEL,  
50 KSI



VIEW "D"  
4" TALL TAPER STRUT.  
0.062" MIN. GALV.  
STEEL, 80 KSI. MIN.

14 GA. GALV. STEEL ROLLER HINGE. (SEE VIEW A)

24 GA. MIN. EXTERIOR STEEL WITH GALV. & POLYESTER FINISH

27 GA. MIN. INTERIOR STEEL SKIN WITH GALV. & POLYESTER FINISH

ONE 4" X 80 KSI X .062" T-STRUT PER SECTION. EACH T-STRUT ATTACHED AT EACH HINGE LOCATION WITH (2) 1/4"x3/4" SELF TAPPING SCREWS [(4) AT EACH DOUBLE END STILE]. (SEE VIEW "D")

12 GA. GALV. STEEL BOTTOM BRACKET. ATTACHED WITH (4) #14x5/8" SHEET METAL SCREWS.

ALUMINUM EXTRUSION & VINYL WEATHERSTRIP.

**SECTION A-A (SIDE VIEW)**

**FASTENER ATTACHMENT TO SUPPORTING STRUCTURE SCHEDULES**

BUILDING TYPE	FASTENER TYPE	MAXIMUM ON-CENTER DISTANCE BETWEEN FASTENERS*	STEEL WASHERS REQUIRED?
HOLLOW BLOCK WALL	1/4" x 1-1/4" MIN. EMBED ULTRACON CONCRETE ANCHOR	5-1/2"	1" O.D.
GROUT FILLED BLOCK WALL	1/4" x 1-3/4" MIN. EMBED ULTRACON CONCRETE ANCHOR	9"	1" O.D.
2000 PSI MIN. CONCRETE	1/4" x 1" MIN. EMBED ULTRACON CONCRETE ANCHOR	8"	1" O.D.
2000 PSI MIN. CONCRETE	1/4" x 1" MIN. EMBED TAPCON CONCRETE ANCHOR	7-1/2"	1" O.D.
2000 PSI MIN. CONCRETE	3/8" x 1-3/4" MIN. EMBED WEJ-IT ANKR TITE SLEEVE ANCHOR	16-3/4"	INCLUDED
4000 PSI MIN. CONCRETE	3/8" x 1-3/4" MIN. EMBED WEJ-IT ANKR TITE SLEEVE ANCHOR	24"	INCLUDED
WOOD FRAME (SYP 0.55 SG)	1/2" x 3" LAG SCREW (ASTM A307, GRADE A) 1-5/8" EMBED INTO STRUCTURE	18"	1" O.D.
14GA STEEL (0.060" MIN.)	1/4"-14 x 1" ITW BUILDEX TEKS SELF-DRILLING FASTENER	7-1/2"	1" O.D.
12GA STEEL (0.105" MIN.)	1/4"-14 x 1" ITW BUILDEX TEKS SELF-DRILLING FASTENER	13-1/4"	1" O.D.
1/8" STEEL	1/4"-14 x 1" ITW BUILDEX TEKS SELF-DRILLING FASTENER	15-3/4"	1" O.D.

\* FIRST (BOTTOM) ANCHOR STARTING AT NO MORE THAN HALF OF THE MAXIMUM ON-CENTER DISTANCE. HIGHEST ANCHOR INSTALLED AT LEAST AS HIGH AS THE DOOR OPENING.  
CLOPAY DOES NOT SUPPLY JAMB ATTACHMENT FASTENERS.  
MINIMUM DISTANCE BETWEEN CENTER OF ANCHOR AND EDGE OF CONCRETE BLOCK: 2-1/2", EXCLUDING STUCCO THICKNESS.

DESIGN LOADS: +25.0, -25.0 PSF  
TEST LOADS: +37.5, -37.5 PSF

MANUFACTURING PRODUCT CODE:  
MPC: C-DSIE-1F447

Unless Stated Otherwise  
TOLERANCES are  
.0 = ±.031  
.00 = ±.015  
.000 = ±.005  
.0000 = ±.001  
Degrees = ±1/2°

**Clopay**  
Building Products Company

8585 Duke Boulevard  
Mason, OH 45040 USA  
Tel. No. 513-770-4800  
Fax No. 513-770-4853

CLOPAY WINDLOAD RATING  
W4

DESCRIPTION: MODEL 240/3200/3220 WINDLOAD 24'-2"

DRAWN BY: RJH	DATE: 2/8/17	SCALE: NONE	DWG. SIZE B
CHECKED BY: -	DATE: -	SHEET 2 OF 4	
DWG. NO.: 105197	VER: TDI		

Unless Stated Otherwise  
DIMENSIONS ARE IN INCHES.

CLOPAY CORP.  
ALL RIGHTS RESERVED.

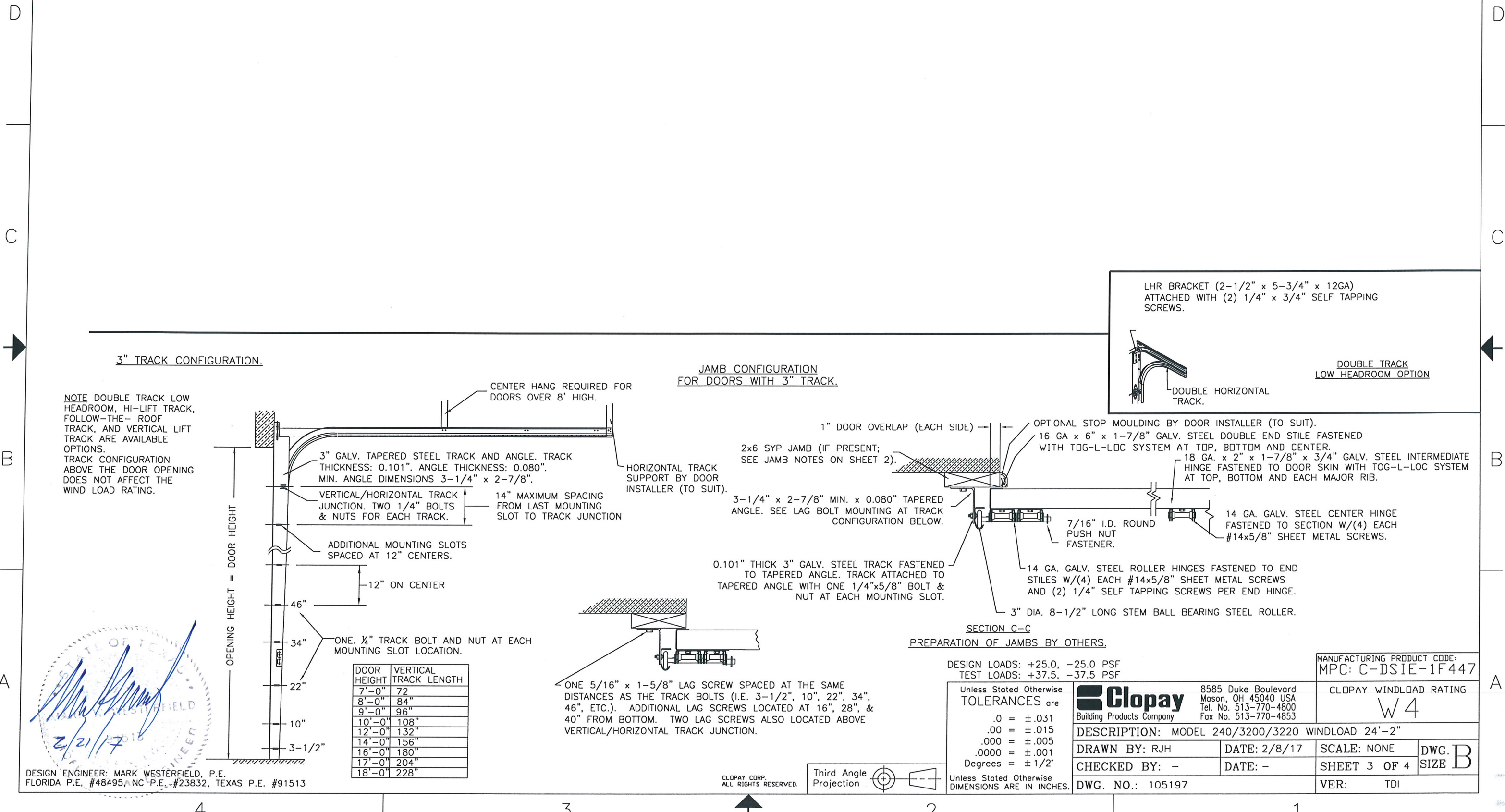


DESIGN ENGINEER: MARK WESTERFIELD, P.E.  
FLORIDA P.E. #48495, NC P.E. #23832, TEXAS P.E. #91513

STATE OF TEXAS  
Professional Engineer  
Mark Westerfield  
2/2/17

CLOPAY MODEL 3200, 3220  
HOLMES MODEL 240, 240G

REVISIONS					
REV. NO.	ZONE:	DATE:	ECN NO.	APPVD:	DESCRIPTION
00	-	-	-	-	SEE REVISION HISTORY ON SHEET 1



STATE OF FLORIDA  
REGISTERED PROFESSIONAL ENGINEER  
MARK WESTERFIELD  
2/21/17

DESIGN ENGINEER: MARK WESTERFIELD, P.E.  
FLORIDA P.E. #48495, NC P.E. #23832, TEXAS P.E. #91513

DESIGN LOADS: +25.0, -25.0 PSF  
TEST LOADS: +37.5, -37.5 PSF

Unless Stated Otherwise TOLERANCES are

.0	= ±.031
.00	= ±.015
.000	= ±.005
.0000	= ±.001
Degrees	= ±1/2'

Unless Stated Otherwise DIMENSIONS ARE IN INCHES.

**Glopay**  
Building Products Company  
8585 Duke Boulevard  
Mason, OH 45040 USA  
Tel. No. 513-770-4800  
Fax No. 513-770-4853

MANUFACTURING PRODUCT CODE:  
MPC: C-DSIE-1F447

CLOPAY WINDLOAD RATING  
W4

DESCRIPTION: MODEL 240/3200/3220 WINDLOAD 24'-2"			
DRAWN BY: RJH	DATE: 2/8/17	SCALE: NONE	DWG. SIZE B
CHECKED BY: -	DATE: -	SHEET 3 OF 4	
DWG. NO.: 105197	VER: TDI		

CLOPAY MODEL 3200, 3220  
HOLMES MODEL 240, 240G

REVISIONS					
REV. NO.	ZONE:	DATE:	ECN NO.	APPVD:	DESCRIPTION
00	-	-	-	-	SEE REVISION HISTORY ON SHEET 1

THE OPTIONAL GLAZING SHOWN ON THIS DRAWING MEETS THE WIND LOAD REQUIREMENTS OF THE FLORIDA BUILDING CODE OR INTERNATIONAL BUILDING CODE BUT DOES NOT MEET THE IMPACT RESISTANT REQUIREMENT FOR WINDBORNE DEBRIS REGIONS (REF. CHAPTER 16 FBC/IBC)

**STANDARD ASSEMBLY CONSTRUCTION:**  
OPTIONAL LITES WITH DSB OR BETTER GLAZING AVAILABLE. OPTIONAL FULL VISION SECTIONS WITH DSB OR BETTER GLAZING AVAILABLE.  
THE ENTIRE DOOR ASSEMBLY INSTALLED IN COMPLIANCE WITH THIS SECTION MEETS THE WIND LOAD REQUIREMENTS OF THE FLORIDA BUILDING CODE OR INTERNATIONAL BUILDING CODE BUT DOES NOT MEET THE IMPACT RESISTANT REQUIREMENT FOR WINDBORNE DEBRIS REGIONS (REF. CHAPTER 16 FBC/IBC).

NON-IMPACT-RESISTANT  
FULL VISION SECTION OPTION



OPTIONAL ALUMINUM FULL VISION WINDOW LITE SECTIONS AVAILABLE (1/8" DSB, 1/8" ACRYLIC, 1/4" WIRE OR BETTER). FULL VISION SECTIONS. OPTIONAL ACRYLIC IS PLASKOLITE OPTIX, AN APPROVED CC2 PLASTIC IN COMPLIANCE WITH IBC/FBC 2606.

STANDARD ASSEMBLY DETAILS

DESIGN ENGINEER: MARK WESTERFIELD, P.E.  
FLORIDA P.E. #48495, INC P.E. #23832, TEXAS P.E. #91513

DESIGN LOADS: +25.0, -25.0 PSF  
TEST LOADS: +37.5, -37.5 PSF

Unless Stated Otherwise  
**TOLERANCES** are  
.0 = ±.031  
.00 = ±.015  
.000 = ±.005  
.0000 = ±.001  
Degrees = ± 1/2'

**Clopay** Building Products Company  
8585 Duke Boulevard  
Mason, OH 45040 USA  
Tel. No. 513-770-4800  
Fax No. 513-770-4853

MANUFACTURING PRODUCT CODE:  
MPC: C-DSIE-1F447

CLOPAY WINDLOAD RATING  
**W4**

DESCRIPTION: MODEL 240/3200/3220 WINDLOAD 24'-2"

DRAWN BY: RJH      DATE: 2/8/17      SCALE: NONE      DWG. **B**

CHECKED BY: -      DATE: -      SHEET 4 OF 4      SIZE **B**

DWG. NO.: 105197      VER: TDI

CLOPAY CORP.  
ALL RIGHTS RESERVED.



Unless Stated Otherwise  
DIMENSIONS ARE IN INCHES.