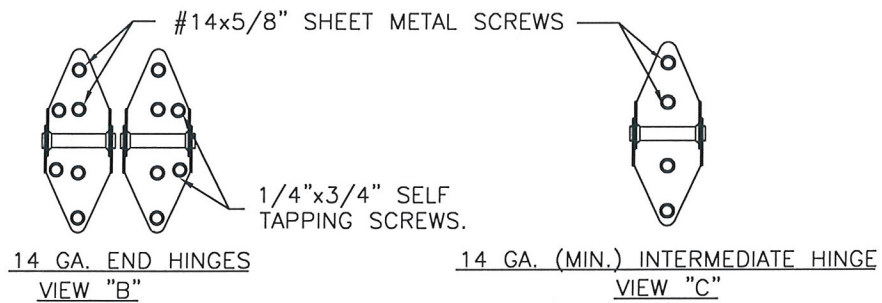
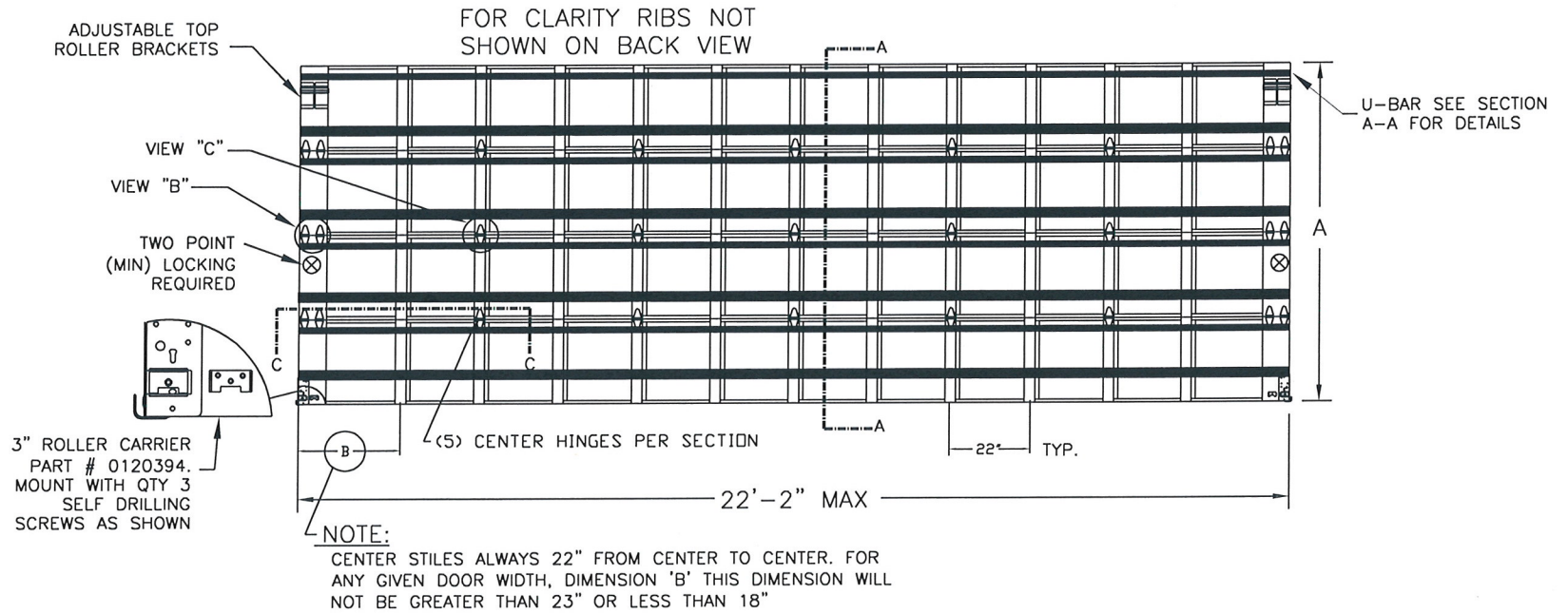


MODELS AVAILABLE (CLOPAY/ HOLMES/ IDEAL)
 MODELS 524, 520/ 224/ C4ST, COST
 INSULATED MODELS 524S, 520S, 524V/ 224S/ C4SS, COSS, C4SV

REVISIONS					
REV. NO.	ZONE:	DATE:	ECN NO.	APPVD:	DESCRIPTION
00	-	2/1/17	-	-	INITIAL RELEASE



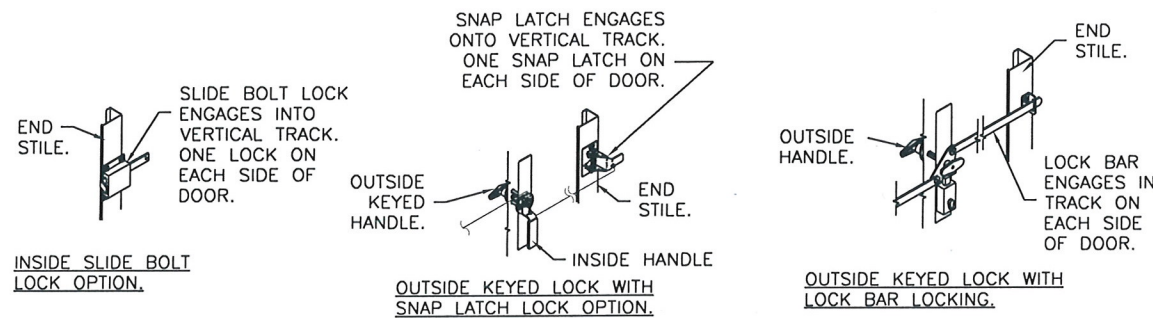
DOOR WIDTH	NUMBER OF CENTER STILES/ HINGES	NUMBER OF EXTRA STILES
16'-3" THRU 20'-2"	4	5
20'-3" THRU 22'-2"	5	6

DOOR HEIGHT 'A'	NUMBER OF SECTIONS
8'-0"	4
8'-3" THRU 10'-0"	5
10'-3" THRU 12'-0"	6
12'-3" THRU 14'-0"	7
14'-3" THRU 16'-0"	8
16'-3" THRU 18'-0"	9

MAX. SECTION HEIGHT: 24"

STATE OF TEXAS
 MARK V. WESTERFIELD
 2/21/17
 PROFESSIONAL ENGINEER

MARK WESTERFIELD, P.E.
 FLORIDA P.E. No. 48495,
 NC P.E. #23832, TEXAS, P.E. #91513



DESIGN LOADS: +30 & -30 P.S.F.
 TEST LOADS: +45 & -45 P.S.F.

Unless Stated Otherwise TOLERANCES are
 .0 = ±.031
 .00 = ±.015
 .000 = ±.005
 .0000 = ±.001
 Degrees = ± 1/2"

Unless Stated Otherwise DIMENSIONS ARE IN INCHES.

Clopay
 Building Products Company

8585 Duke Boulevard
 Mason, OH 45040 USA
 Tel. No. 513-770-4800
 Fax No. 513-770-4853

MANUFACTURING PRODUCT CODE:
 MPC: C-PAN-1E448

CLOPAY WINDLOAD RATING
 W5

DESCRIPTION: COMMERCIAL RIBBED DOOR, +30/-30 PSF DESIGN LOAD			
DRAWN BY: RJH	DATE: 2/1/17	SCALE: NONE	DWG. B
CHECKED BY: -	DATE: -	SHEET 1 OF 4	SIZE B
DWG. NO.: 105064	VER: TDI		

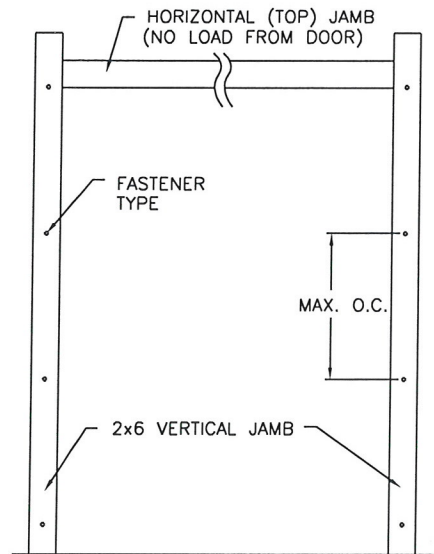
MODELS AVAILABLE (CLOPAY/ HOLMES/ IDEAL)
 MODELS 524, 520/ 224/ C4ST, COST
 INSULATED MODELS 524S, 520S, 524V/ 224S/ C4SS, COSS, C4SV

REVISIONS					
REV. NO.	ZONE:	DATE:	ECN NO.	APPVD:	DESCRIPTION
00	-	-	-	-	SEE REVISION HISTORY ON SHEET 1

JAMB TO SUPPORTING STRUCTURE ATTACHMENT

- NOTES:**
1. ALL THE LOAD FROM THE DOOR IS TRANSFERRED TO THE TRACK AND THEN FROM THE TRACK TO THE 2x6 VERTICAL SYP (GRADE #2 OR BETTER) JAMBS. NO LOAD FROM THE DOOR IS TRANSFERRED TO THE HORIZONTAL (TOP) JAMB.
 2. EACH VERTICAL JAMB SEES A MAXIMUM DESIGN LOAD OF +330 LB & -330 LB. PER LINEAR FOOT OF JAMB.
 3. ALL JAMB FASTENERS MAY BE (BUT ARE NOT REQUIRED TO BE) COUNTERSUNK TO PROVIDE A FLUSH MOUNTING SURFACE.
 4. A 1/3 STRESS INCREASE FOR WIND LOAD WAS NOT USED IN THE CALCULATION OF ALLOWABLE LOADS FOR ANCHORS AND FASTENERS FOR STEEL, CONCRETE AND MASONRY.

NOTE: 2x6 WOOD JAMBS ARE NOT REQUIRED WITH CONTINUOUS ANGLE MOUNT TRACK. HOWEVER, IF DESIRED ON STEEL JAMBS OR CONCRETE OR BLOCK WALLS, APPROVED FASTENERS AS DETAILED BELOW SHOULD BE INCREASED IN LENGTH BY 1-1/2" AND INSTALLED DIRECTLY THROUGH THE ANGLE AND 2x6 WOOD JAMBS INTO THE STEEL JAMBS OR CONCRETE OR BLOCK WALLS. ANCHORS CAN BE (BUT ARE NOT REQUIRED TO BE) COUNTERSUNK TO PROVIDE A FLUSH MOUNTING SURFACE. CONTINUOUS ANGLE TRACK CAN BE ANCHORED DIRECTLY TO GROUT REINFORCED BLOCK WALL OR 3,000 PSI MIN. CONCRETE COLUMN OR STEEL JAMBS.

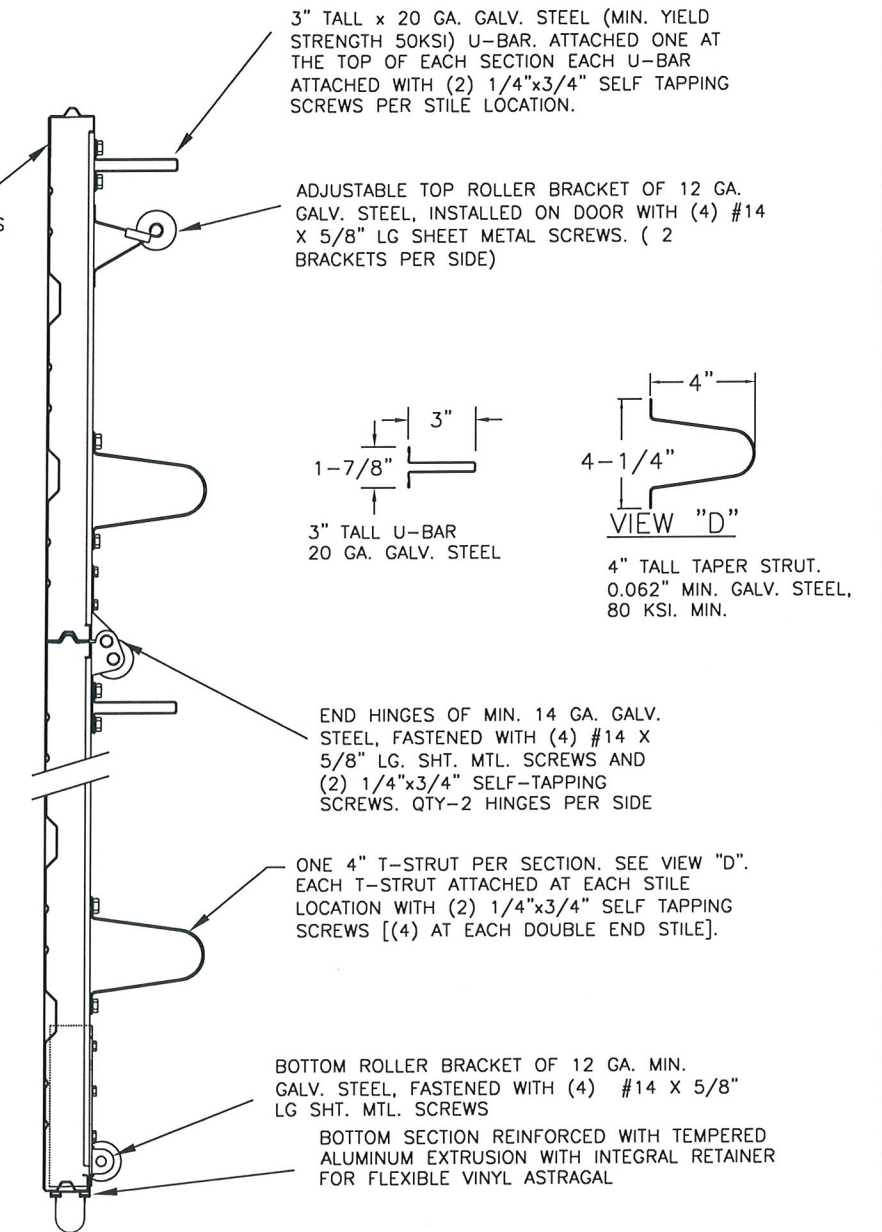


FASTENER ATTACHMENT TO SUPPORTING STRUCTURE SCHEDULES

BUILDING TYPE	FASTENER TYPE	MAXIMUM ON-CENTER DISTANCE BETWEEN FASTENERS*	STEEL WASHERS REQUIRED?
HOLLOW BLOCK WALL	1/4" x 1-1/4" MIN. EMBED ULTRACON CONCRETE ANCHOR	5"	1" O.D.
GROUT FILLED BLOCK WALL	1/4" x 1-3/4" MIN. EMBED ULTRACON CONCRETE ANCHOR	8-1/4"	1" O.D.
2000 PSI MIN. CONCRETE	1/4" x 1" MIN. EMBED ULTRACON CONCRETE ANCHOR	7-1/4"	1" O.D.
2000 PSI MIN. CONCRETE	1/4" x 1" MIN. EMBED TAPCON CONCRETE ANCHOR	6-3/4"	1" O.D.
2000 PSI MIN. CONCRETE	3/8" x 1-3/4" MIN. EMBED WEJ-IT ANKR TITE SLEEVE ANCHOR	15"	INCLUDED
4000 PSI MIN. CONCRETE	3/8" x 1-3/4" MIN. EMBED WEJ-IT ANKR TITE SLEEVE ANCHOR	24"	INCLUDED
WOOD FRAME (SYP 0.55 SG)	1/2" x 3" LAG SCREW (ASTM A307, GRADE A) 1-5/8" EMBED INTO STRUCTURE	16-1/2"	1" O.D.
14GA STEEL (0.060" MIN.)	1/4"-14 x 1" ITW BUILDEX TEKS SELF-DRILLING FASTENER	6-3/4"	1" O.D.
12GA STEEL (0.105" MIN.)	1/4"-14 x 1" ITW BUILDEX TEKS SELF-DRILLING FASTENER	12"	1" O.D.
1/8" STEEL	1/4"-14 x 1" ITW BUILDEX TEKS SELF-DRILLING FASTENER	14-1/2"	1" O.D.

* FIRST (BOTTOM) ANCHOR STARTING AT NO MORE THAN HALF OF THE MAXIMUM ON-CENTER DISTANCE. HIGHEST ANCHOR INSTALLED AT LEAST AS HIGH AS THE DOOR OPENING.
 CLOPAY DOES NOT SUPPLY JAMB ATTACHMENT FASTENERS.
 MINIMUM DISTANCE BETWEEN CENTER OF ANCHOR AND EDGE OF CONCRETE BLOCK: 2-1/2", EXCLUDING STUCCO THICKNESS.

SECTIONS ARE 1-7/8" THK PANELS ROLL FORMED OF .022" MIN. HOT DIPPED G-40 GALVANIZING, ROLL FORMED STEEL.



SECTION A-A (SIDE VIEW)

DESIGN LOADS: +30 & -30 P.S.F.
 TEST LOADS: +45 & -45 P.S.F.

MANUFACTURING PRODUCT CODE:
 MPC: C-PAN-1E448

Unless Stated Otherwise
 TOLERANCES are
 .0 = ±.031
 .00 = ±.015
 .000 = ±.005
 .0000 = ±.001
 Degrees = ±1/2°

Glopay
 Building Products Company
 8585 Duke Boulevard
 Mason, OH 45040 USA
 Tel. No. 513-770-4800
 Fax No. 513-770-4853

CLOPAY WINDLOAD RATING
W5

DESCRIPTION: COMMERCIAL RIBBED DOOR, +30/-30 PSF DESIGN LOAD			
DRAWN BY: RJH	DATE: 2/1/17	SCALE: NONE	DWG. B
CHECKED BY: -	DATE: -	SHEET 2 OF 4	SIZE B
DWG. NO.: 105064	VER: TDI		



MARK WESTFIELD, P.E.
 FLORIDA P.E. No. 48495
 NC P.E. #23832, TEXAS P.E. #91513

4

3

2

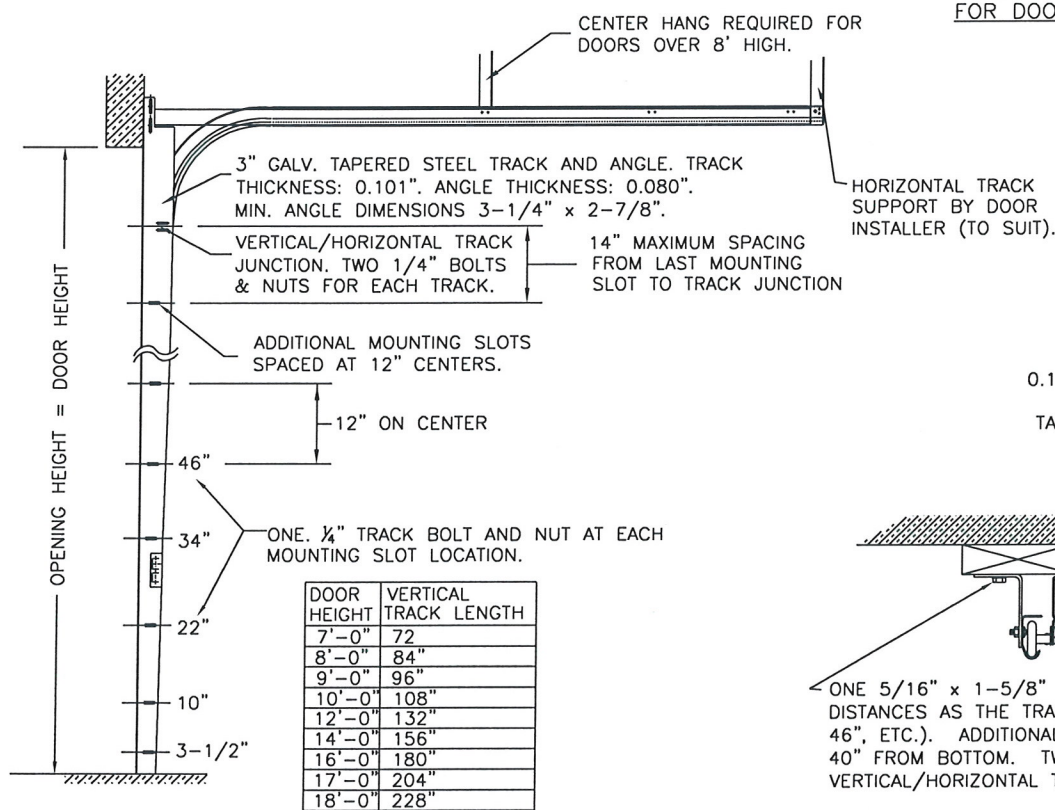
1

MODELS AVAILABLE (CLOPAY/ HOLMES/ IDEAL)
 MODELS 524, 520/ 224/ C4ST, COST
 INSULATED MODELS 524S, 520S, 524V/ 224S/ C4SS, COSS, C4SV

REVISIONS					
REV. NO.	ZONE:	DATE:	ECN NO.	APPVD:	DESCRIPTION
00	-	-	-	-	SEE REVISION HISTORY ON SHEET 1

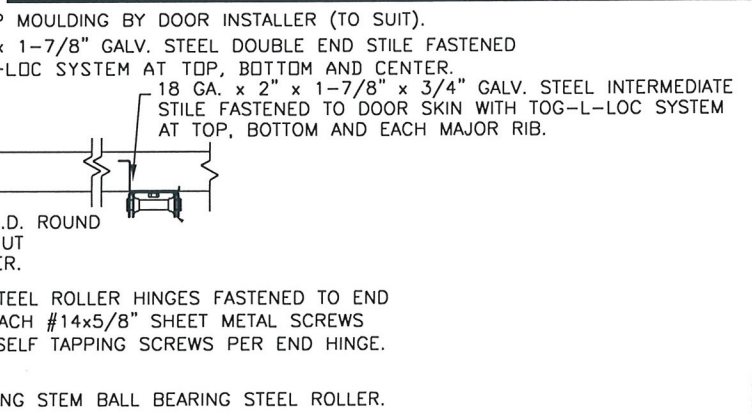
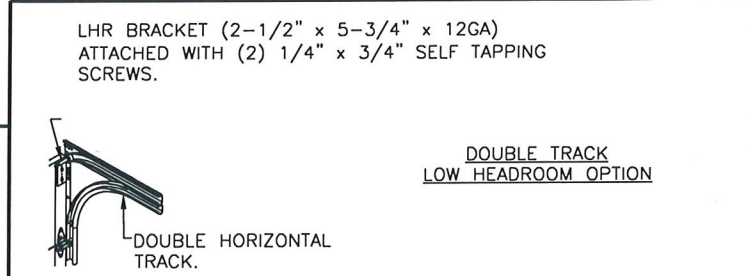
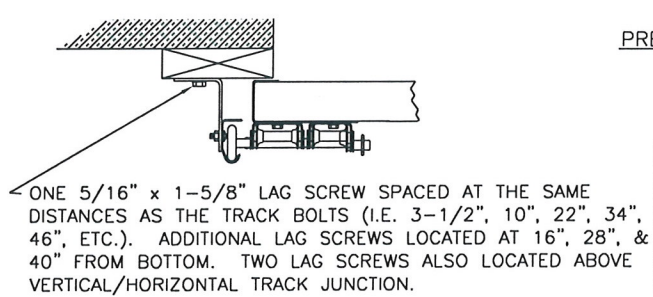
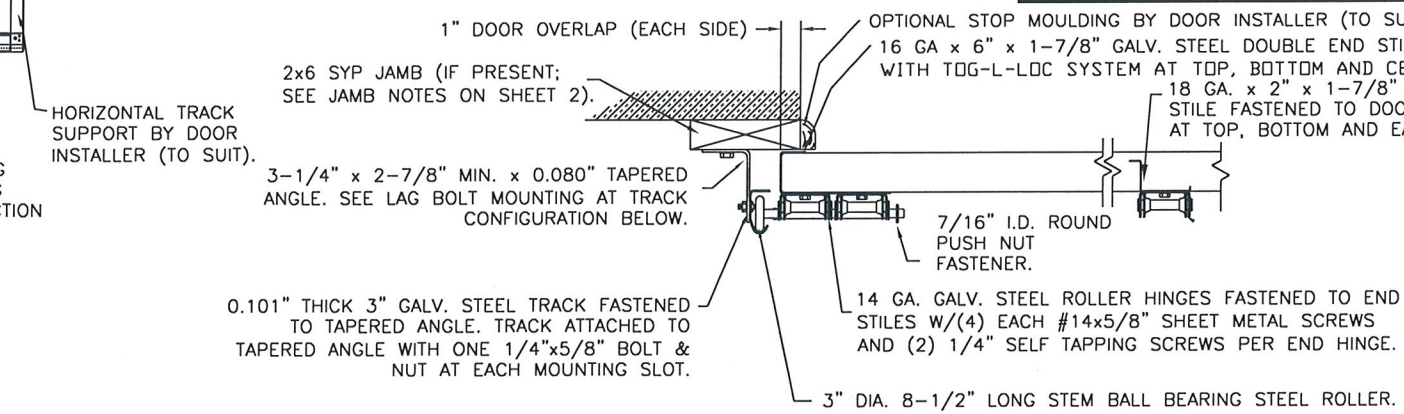
3" TRACK CONFIGURATION.

NOTE DOUBLE TRACK LOW HEADROOM, HI-LIFT TRACK, FOLLOW-THE-ROOF TRACK, AND VERTICAL LIFT TRACK ARE AVAILABLE OPTIONS. TRACK CONFIGURATION ABOVE THE DOOR OPENING DOES NOT AFFECT THE WIND LOAD RATING.



DOOR HEIGHT	VERTICAL TRACK LENGTH
7'-0"	72"
8'-0"	84"
9'-0"	96"
10'-0"	108"
12'-0"	132"
14'-0"	156"
16'-0"	180"
17'-0"	204"
18'-0"	228"

JAMB CONFIGURATION FOR DOORS WITH 3" TRACK.



SECTION C-C PREPARATION OF JAMBS BY OTHERS.

DESIGN LOADS: +30 & -30 P.S.F.
 TEST LOADS: +45 & -45 P.S.F.

Unless Stated Otherwise TOLERANCES are
 .0 = ±.031
 .00 = ±.015
 .000 = ±.005
 .0000 = ±.001
 Degrees = ±1/2'
 Unless Stated Otherwise DIMENSIONS ARE IN INCHES.

Clopay Building Products Company
 8585 Duke Boulevard
 Mason, OH 45040 USA
 Tel. No. 513-770-4800
 Fax No. 513-770-4853

MANUFACTURING PRODUCT CODE:
 MPC: C-PAN-1E448

CLOPAY WINDLOAD RATING
W5

DESCRIPTION: COMMERCIAL RIBBED DOOR, +30/-30 PSF DESIGN LOAD			
DRAWN BY: RJH	DATE: 2/1/17	SCALE: NONE	DWG. SIZE B
CHECKED BY: -	DATE: -	SHEET 3 OF 4	
DWG. NO.: 105064	VER: TDI		

STATE OF TEXAS
 REGISTERED PROFESSIONAL ENGINEER
 MARK WESTERFIELD, P.E.
 FLORIDA P.E. No. 48495
 NC P.E. #23832, TEXAS P.E. #91513

4

3

2

1

MODELS AVAILABLE (CLOPAY/ HOLMES/ IDEAL)
 MODELS 524, 520/ 224/ C4ST, C0ST
 INSULATED MODELS 524S, 520S, 524V/ 224S/ C4SS, C0SS, C4SV

REVISIONS					
REV. NO.	ZONE:	DATE:	ECN NO.	APPVD:	DESCRIPTION
00	-	-	-	-	SEE REVISION HISTORY ON SHEET 1

THE OPTIONAL GLAZING SHOWN ON THIS DRAWING MEETS THE WIND LOAD REQUIREMENTS OF THE FLORIDA BUILDING CODE OR INTERNATIONAL BUILDING CODE BUT DOES NOT MEET THE IMPACT RESISTANT REQUIREMENT FOR WINDBORNE DEBRIS REGIONS (REF. CHAPTER 16 FBC/IBC)

STANDARD ASSEMBLY CONSTRUCTION:
 OPTIONAL LITES WITH DSB OR BETTER GLAZING AVAILABLE. OPTIONAL FULL VISION SECTIONS WITH DSB OR BETTER GLAZING AVAILABLE.
 THE ENTIRE DOOR ASSEMBLY INSTALLED IN COMPLIANCE WITH THIS SECTION MEETS THE WIND LOAD REQUIREMENTS OF THE FLORIDA BUILDING CODE OR INTERNATIONAL BUILDING CODE BUT DOES NOT MEET THE IMPACT RESISTANT REQUIREMENT FOR WINDBORNE DEBRIS REGIONS (REF. CHAPTER 16 FBC/IBC).

NON-IMPACT-RESISTANT
FULL VISION SECTION OPTION



OPTIONAL ALUMINUM FULL VISION WINDOW LITE SECTIONS AVAILABLE (1/8" DSB, 1/8" ACRYLIC, 1/4" WIRE OR BETTER). FULL VISION SECTIONS TO HAVE SAME REINFORCEMENT AS OTHER SECTIONS EXCEPT AS NOTED. OPTIONAL ACRYLIC IS PLASKOLITE OPTIX, AN APPROVED CC2 PLASTIC IN COMPLIANCE WITH IBC/FBC 2606

STANDARD ASSEMBLY DETAILS



MARK WESTFIELD, P.E. A.I.
 FLORIDA P.E. No. 48495
 NC P.E. #23832, TEXAS P.E. #91513

DESIGN LOADS: +30 & -30 P.S.F.
 TEST LOADS: +45 & -45 P.S.F.

MANUFACTURING PRODUCT CODE:
 MPC: C-PAN-1E448

Unless Stated Otherwise
 TOLERANCES are
 .0 = ±.031
 .00 = ±.015
 .000 = ±.005
 .0000 = ±.001
 Degrees = ± 1/2'



8585 Duke Boulevard
 Mason, OH 45040 USA
 Tel. No. 513-770-4800
 Fax No. 513-770-4853

CLOPAY WINDLOAD RATING
 W5

DESCRIPTION: COMMERCIAL RIBBED DOOR, +30/-30 PSF DESIGN LOAD

DRAWN BY: RJH	DATE: 2/1/17	SCALE: NONE	DWG. SIZE B
CHECKED BY: -	DATE: -	SHEET 4 OF 4	

DWG. NO.: 105064	VER: TDI
------------------	----------

Unless Stated Otherwise
 DIMENSIONS ARE IN INCHES.