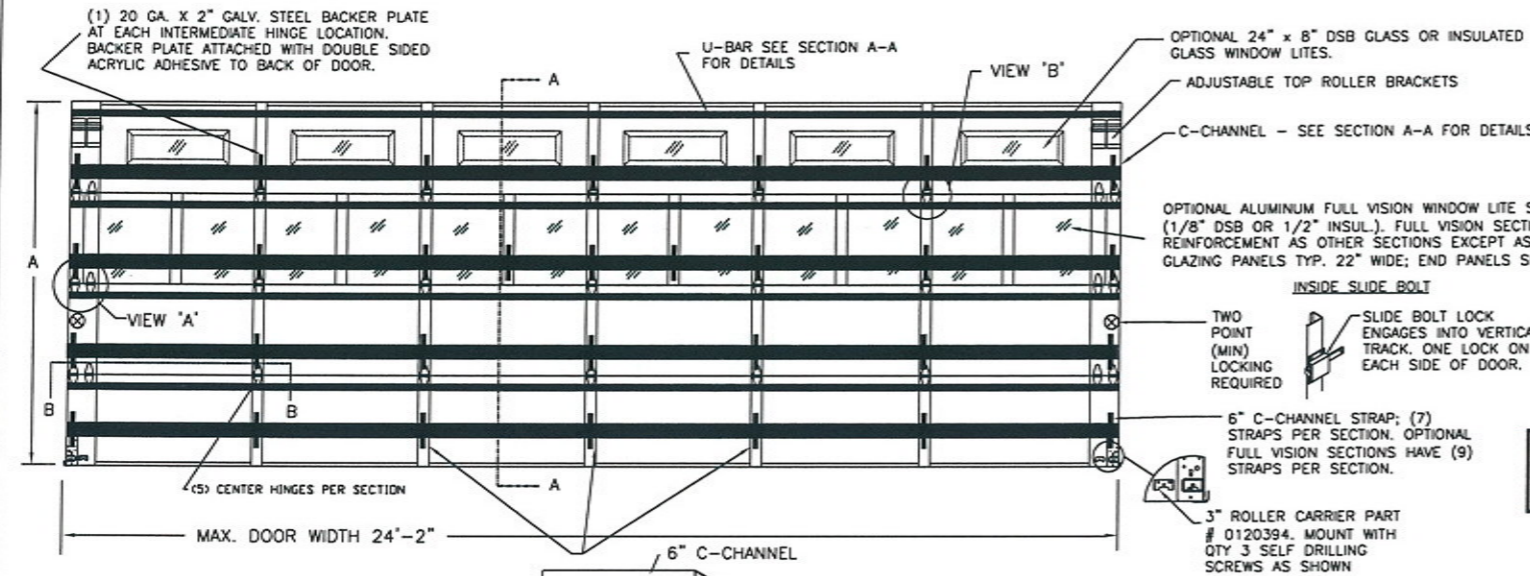


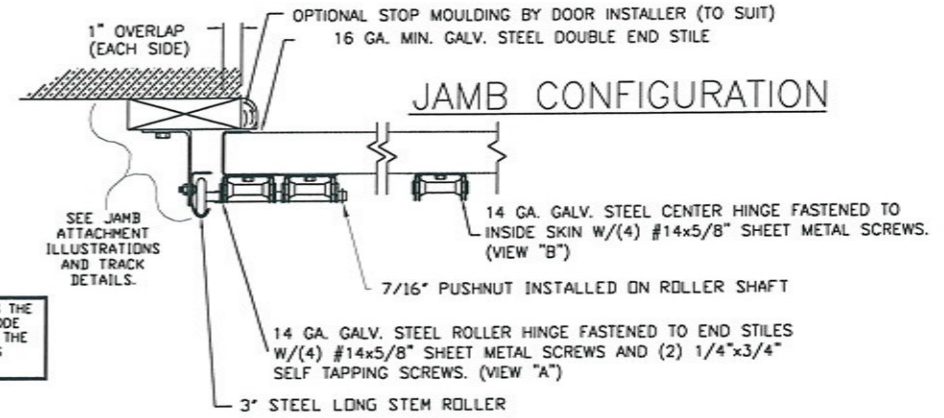
CLOPAY MODEL 3200: 24 GA. EXTERIOR STEEL SKIN
 CLOPAY MODEL 3220: 20 GA. EXTERIOR STEEL SKIN
 HOLMES MODEL 240/240G: 24 GA. EXTERIOR STEEL SKIN

UP TO 24'2"W x 18'0"H MAXIMUM

REVISIONS					
REV. NO.	ZONE	DATE	ECN NO.	APPVD:	DESCRIPTION
03	-	02/2012	-	-	UPDATED WINDCODE CHART
04	-	08/2012	-	-	REVISED FOR TDI
05	-	06/2013	-	-	REMOVED ACRYLIC/WIRE GLASS. ADDED GLAZING SIZE FOR FV.
06	-	08/2016	-	-	REMOVED WIND SPEED TABLE.



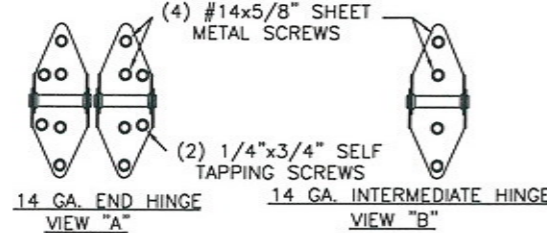
THE OPTIONAL GLAZING SHOWN ON THIS DRAWING MEETS THE WIND LOAD REQUIREMENTS OF THE FLORIDA BUILDING CODE OR INTERNATIONAL BUILDING CODE BUT DOES NOT MEET THE IMPACT RESISTANT REQUIREMENT FOR WINDBORNE DEBRIS REGIONS (FBC / IBC CHAPTER 16).



SECTION B-B

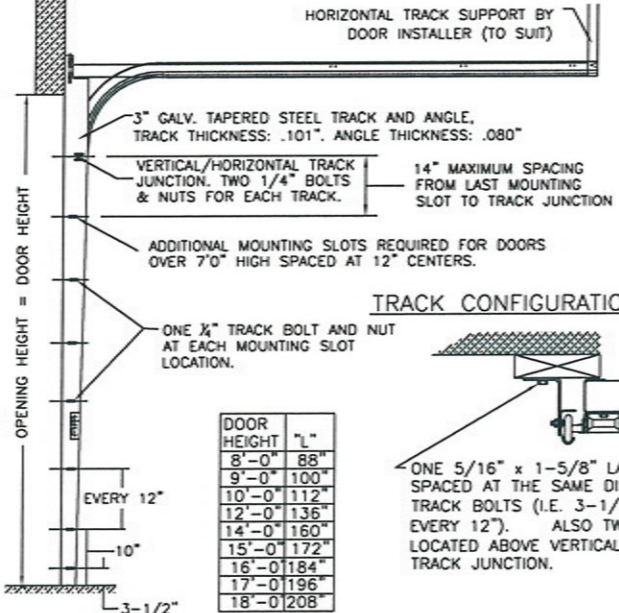
DOOR HEIGHT 'A'	NUMBER OF SECTIONS
UP TO 8'-0"	4
8'-3" THRU 10'-0"	5
10'-3" THRU 12'-0"	6
12'-3" THRU 14'-0"	7
14'-3" THRU 16'-0"	8
16'-3" THRU 18'-0"	9

MAX. SECTION HEIGHT: 24"



ATTACH THE 6" x 2-1/4" x 12 GA. STEEL REINFORCING PLATE TO THE UNDERSIDE OF THE C-CHANNEL WITH (4) 1/4" x 3/4" SELF TAPPING SCREWS AT THESE LOCATIONS.

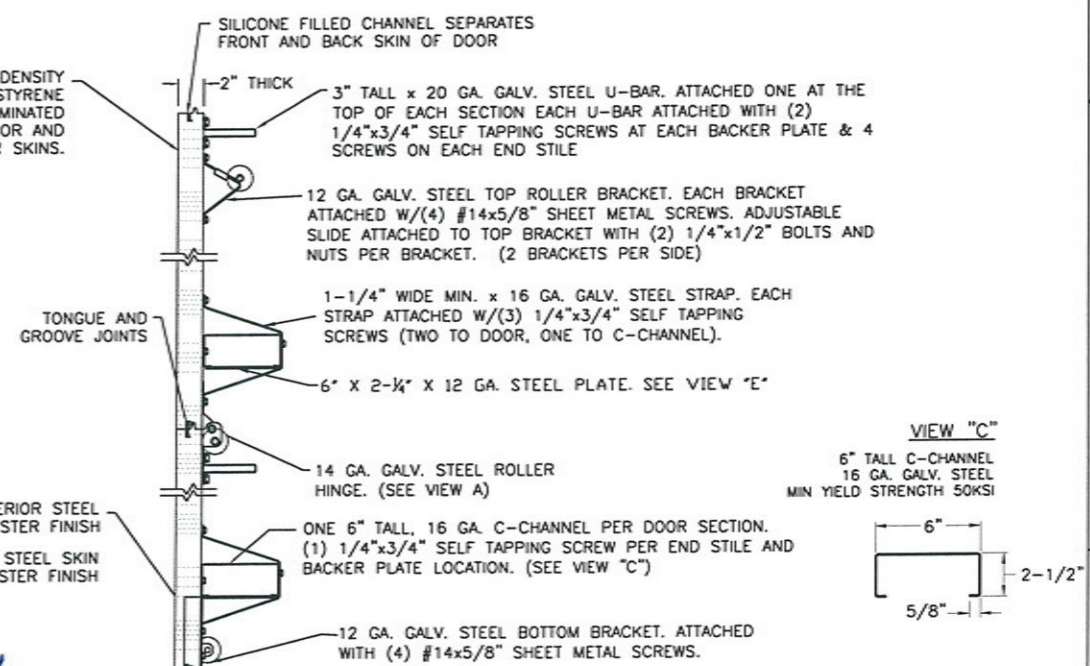
NOTE: TRACK CONFIGURATION ABOVE THE DOOR OPENING DOES NOT AFFECT THE WIND LOAD RATING OF THIS DOOR.



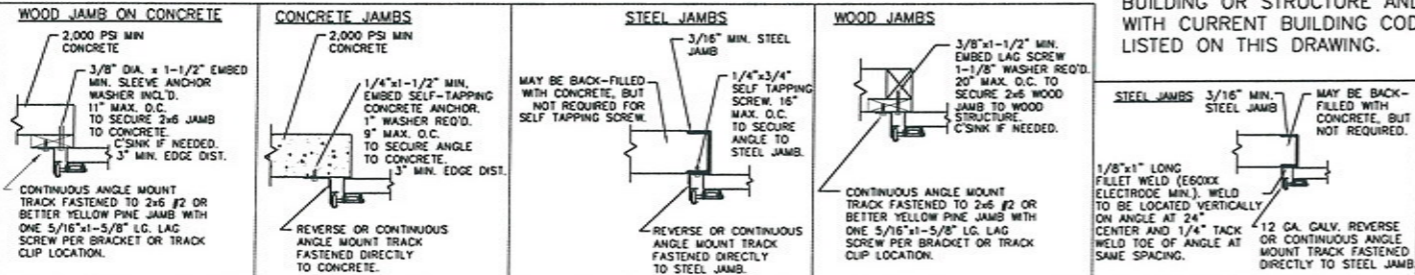
DOOR HEIGHT	"L"
8'-0"	88"
9'-0"	100"
10'-0"	112"
12'-0"	136"
14'-0"	160"
15'-0"	172"
16'-0"	184"
17'-0"	196"
18'-0"	208"

TRACK CONFIGURATION

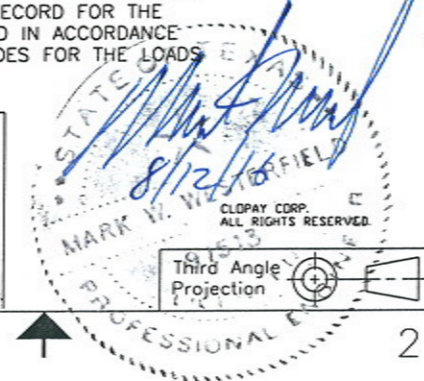
1.95" THICK, 1# DENSITY EXPANDED POLYSTYRENE FOAM INSULATION LAMINATED TO BOTH EXTERIOR AND INTERIOR SKINS.



ANCHOR NOTE: FIRST (BOTTOM) ANCHOR STARTING AT NO MORE THAN HALF OF THE MAXIMUM ON-CENTER DISTANCE. HIGHEST ANCHOR INSTALLED AT LEAST AS HIGH AS THE DOOR OPENING.



NOTE: THE DESIGN OF THE SUPPORTING STRUCTURAL ELEMENTS ARE THE RESPONSIBILITY OF THE PROFESSIONAL OF RECORD FOR THE BUILDING OR STRUCTURE AND IN ACCORDANCE WITH CURRENT BUILDING CODES FOR THE LOADS LISTED ON THIS DRAWING.



DESIGN ENGINEER: MARK WESTERFIELD, P.E.
 FLORIDA P.E. #48495, NC P.E. #23832, TEXAS P.E. #91513
 DESIGN LOADS: +25.0, -25.0 PSF
 TEST LOADS: +37.5, -37.5 PSF

MANUFACTURING PRODUCT CODE: MPC: C-DSIE-1F447

CLOPAY WINDLOAD RATING: W4

DESCRIPTION: MODEL 240/3200/3220 WINDLOAD 24'-2"

DRAWN BY: BFA DATE: 11/08/04 SCALE: NONE DWG. SIZE: B

CHECKED BY: - DATE: - SHEET 1 OF 1

DWG. NO.: 103334 VER: TDI

Unless Stated Otherwise TOLERANCES are:
 .0 = ±.031
 .00 = ±.015
 .000 = ±.005
 .0000 = ±.001
 Degrees = ± 1/2"

Unless Stated Otherwise DIMENSIONS ARE IN INCHES.