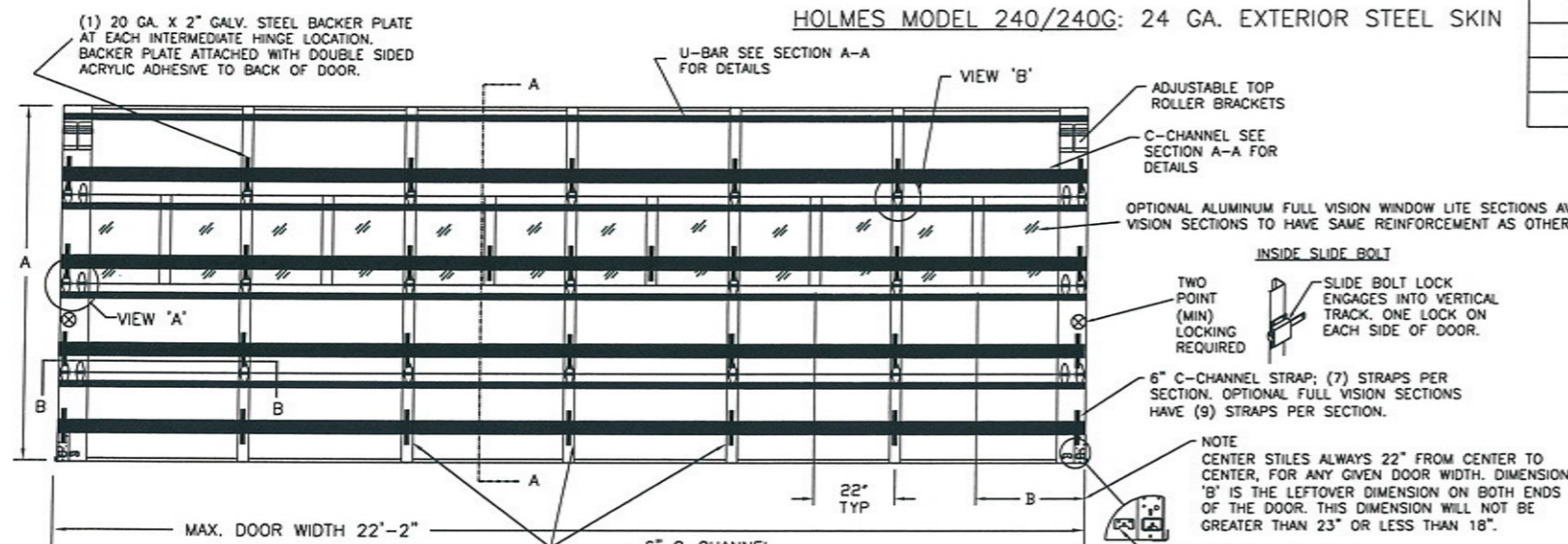
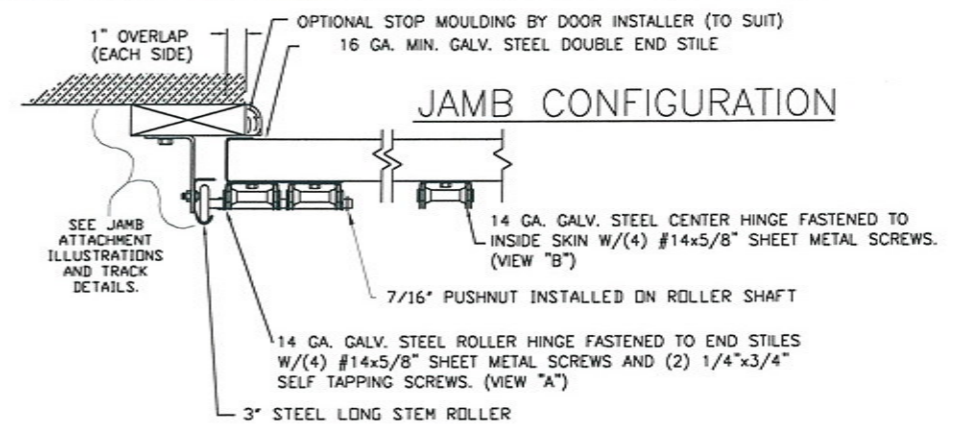


MODEL 240/3200/3220 UP TO 22'2"W x 18'0"H MAXIMUM
 CLOPAY MODEL 3200: 24 GA. EXTERIOR STEEL SKIN
 CLOPAY MODEL 3220: 20 GA. EXTERIOR STEEL SKIN

HOLMES MODEL 240/240G: 24 GA. EXTERIOR STEEL SKIN



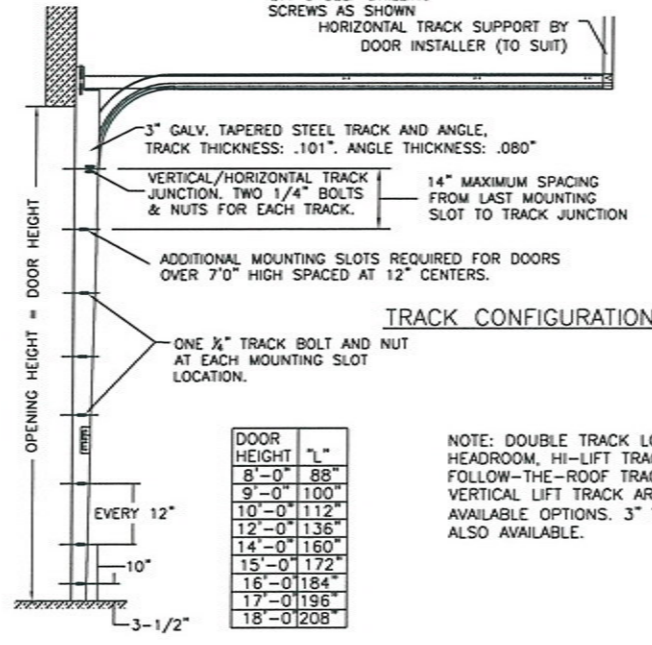
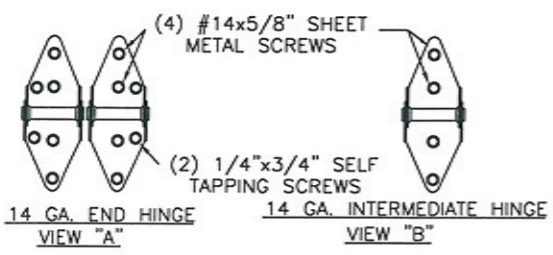
| REVISIONS | | | | | |
|-----------|------|---------|---------|--------|---|
| REV. NO. | ZONE | DATE | ECN NO. | APPVD. | DESCRIPTION |
| 03 | - | 02/2012 | - | - | UPDATED WINDCODE CHART |
| 04 | - | 08/2012 | - | - | REVISED FOR TDI |
| 05 | - | 06/2013 | - | - | REMOVED ACRYLIC GLAZING. SPECIFIED FV DIMENSIONS. |
| 06 | - | 08/2016 | - | - | REMOVED WIND SPEED TABLE. |



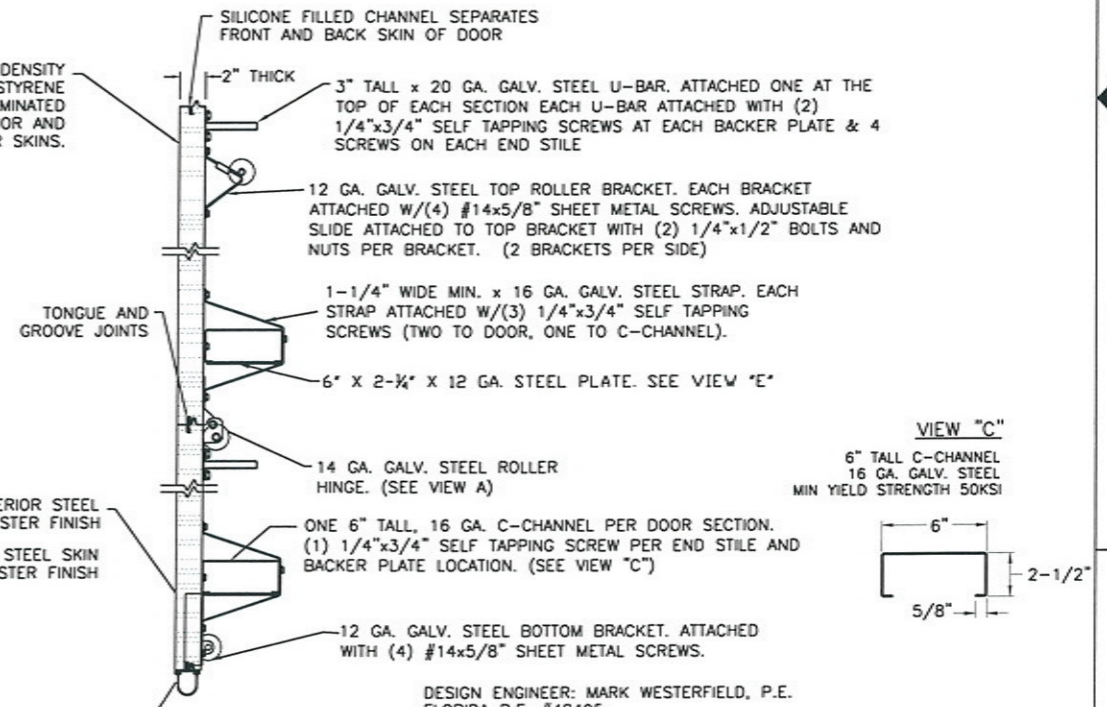
SECTION B-B

| DOOR HEIGHT 'A' | NUMBER OF SECTIONS |
|--------------------|--------------------|
| UP TO 8'-0" | 4 |
| 8'-3" THRU 10'-0" | 5 |
| 10'-3" THRU 12'-0" | 6 |
| 12'-3" THRU 14'-0" | 7 |
| 14'-3" THRU 16'-0" | 8 |
| 16'-3" THRU 18'-0" | 9 |

ATTACH THE 6" x 2-1/4" x 12 GA. STEEL REINFORCING PLATE TO THE UNDERSIDE OF THE C-CHANNEL WITH (4) 1/4" x 3/4" SELF TAPPING SCREWS AT THESE LOCATIONS.



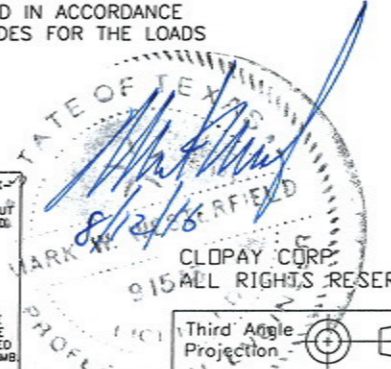
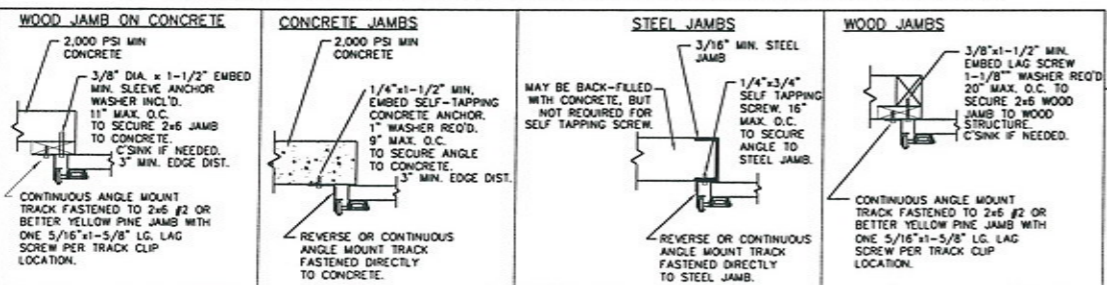
1.95" THICK, 1# DENSITY EXPANDED POLYSTYRENE FOAM INSULATION LAMINATED TO BOTH EXTERIOR AND INTERIOR SKINS.



THE OPTIONAL GLAZING SHOWN ON THIS DRAWING MEETS THE WIND LOAD REQUIREMENTS OF THE FLORIDA BUILDING CODE OR INTERNATIONAL BUILDING CODE BUT DOES NOT MEET THE IMPACT RESISTANT REQUIREMENT FOR WINDBORNE DEBRIS REGIONS (FBC / IBC CHAPTER 16).

NOTE: THE DESIGN OF THE SUPPORTING STRUCTURAL ELEMENTS ARE THE RESPONSIBILITY OF THE PROFESSIONAL OF RECORD FOR THE BUILDING OR STRUCTURE AND IN ACCORDANCE WITH CURRENT BUILDING CODES FOR THE LOADS LISTED ON THIS DRAWING.

ANCHOR NOTE: FIRST (BOTTOM) ANCHOR STARTING AT NO MORE THAN HALF OF THE MAXIMUM ON-CENTER DISTANCE. HIGHEST ANCHOR INSTALLED AT LEAST AS HIGH AS THE DOOR OPENING.



DESIGN ENGINEER: MARK WESTERFIELD, P.E.
 FLORIDA P.E. #48495
 DESIGN LOADS: +30.0, -30.0 PSF
 TEST LOADS: +45.0, -45.0 PSF

MANUFACTURING PRODUCT CODE: MPC: C-DSIE-1F447

CLOPAY WINDLOAD RATING: W5

DESCRIPTION: MODEL 240/3200/3220 WINDLOAD 22'-2"

DRAWN BY: RJK DATE: 11/08/04 SCALE: NONE DWG. B

CHECKED BY: - DATE: - SHEET 1 OF 1 SIZE B

DWG. NO.: 103320 VER: TDI

Unless Stated Otherwise TOLERANCES are:
 .0 = ±.031
 .00 = ±.015
 .000 = ±.005
 .0000 = ±.001
 Degrees = ±1/2'

Unless Stated Otherwise DIMENSIONS ARE IN INCHES.