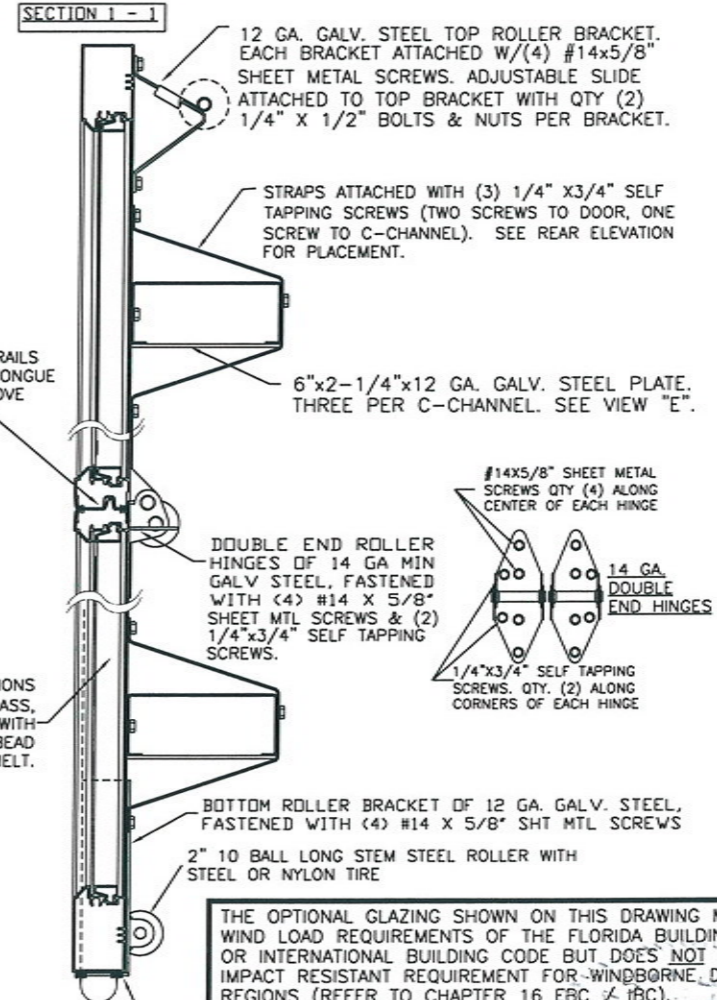
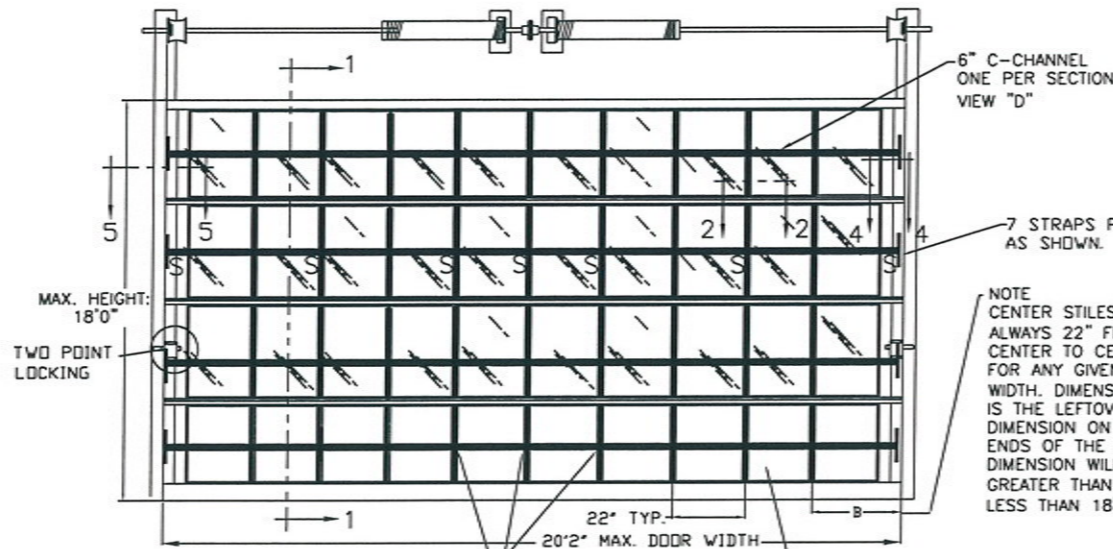
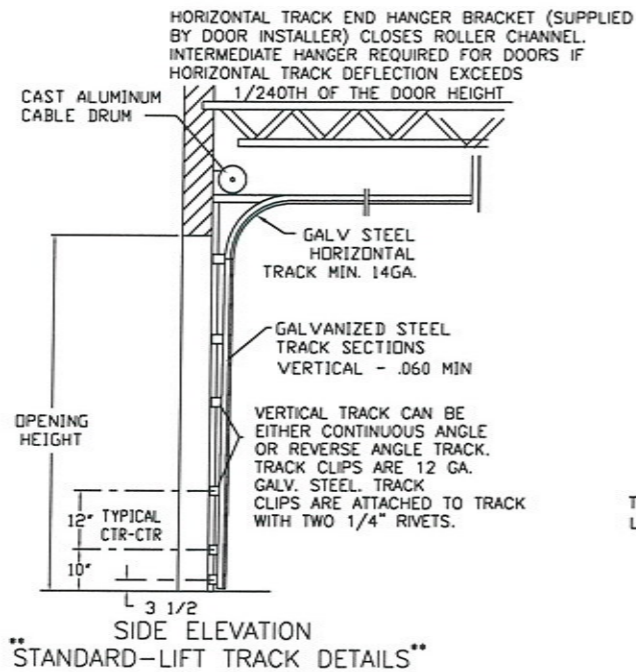


CLOPAY MODEL 902
IDEAL MODEL C2AL

DOOR HEIGHT 'A'	NUMBER OF SECTIONS
UP TO 8'-0"	4
8'-3" THRU 10'-0"	5
10'-3" THRU 12'-0"	6
12'-3" THRU 14'-0"	7
14'-3" THRU 16'-0"	8
16'-3" THRU 18'-0"	9

MAX. SECTION HEIGHT: 24"

REVISIONS					
REV. NO.	ZONE:	DATE:	ECN NO.	APPVD:	DESCRIPTION
04	-	02/2012	-	SH	UPDATED WINDCODE CHART
05	-	08/2012	-	SH	REVISED FOR TDI
06	-	06/2013	-	SH	REMOVED ACRYLIC GLAZING. SPECIFIED MAX GLAZING DIMENSION
07	-	08/2016	-	SH	REMOVED WIND SPEED TABLE.



****NOTE: DOUBLE TRACK LOW HEADROOM, HI-LIFT TRACK, FOLLOW-THE-ROOF TRACK, AND VERTICAL LIFT TRACK ARE AVAILABLE OPTIONS. 3" TRACK ALSO AVAILABLE.**

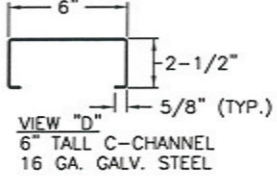
DOOR IS MADE OF 6063-T5 ALUMINUM EXTRUSIONS. WALL THICKNESS:
TOP & BOTTOM RAILS .075
INTER. TOP & BOTTOM RAILS .075
TOP HAS .1 X 1.875" FIN
INTER. TOP RAIL CAP .040
SINGLE & DOUBLE END STILES .075
CENTER STILES .062

AT THE CENTER OF EACH C-CHANNEL ATTACH THREE 6"x2-1/4"x12 GA. STEEL PLATE TO THE UNDERSIDE OF THE C-CHANNEL WITH (4) 1/4"x3/4" SELF TAPPING SCREWS.

VIEW "E" 6" C-CHANNEL

CENTER STILES FASTENED TO RAILS WITH FULL LENGTH 5/16" ALUMINUM RODS AND FLANGE NUTS

END STILES FASTENED TO RAILS WITH FULL LENGTH 5/16" ALUMINUM RODS AND FLANGE NUTS

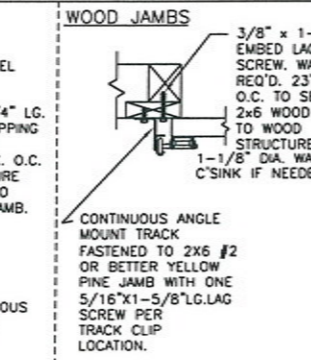
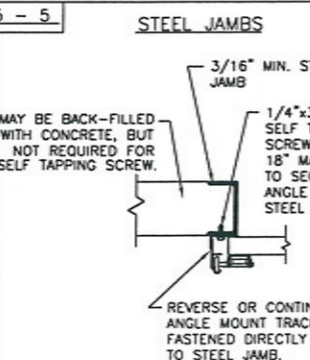
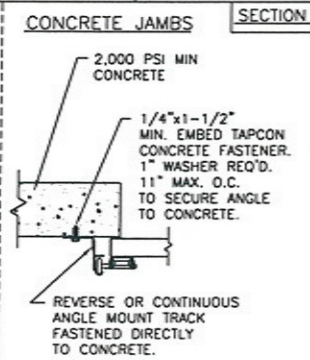
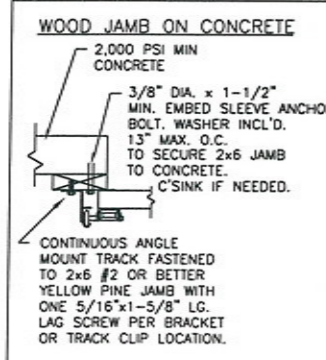
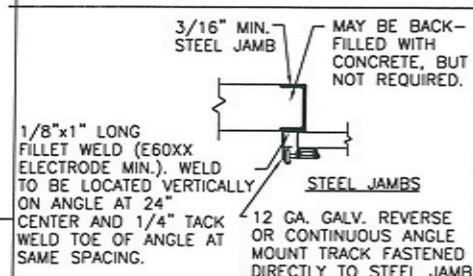


REINFORCING FIN ON INTER. TOP RAILS ANGLE CUT AT END STILES

SECTION 4 - 4

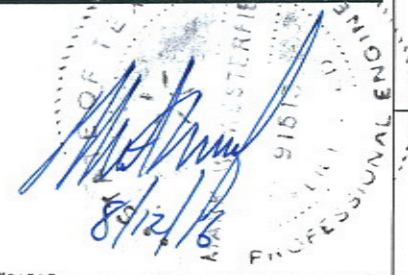
COR-LDOLVLY CENTER HINGE OF 16 GA. GALV. STEEL, ATTACHED TO INTER. BOTTOM RAIL WITH (2) #14 X 5/8" SHT MTL SCREWS AND TO INTER. TOP RAIL WITH (2) 1/4" - 20 X 1/2" HEX HEAD MACHINE SCREWS & NUTS

SECTION 2 - 2



THE DESIGN OF THE SUPPORTING STRUCTURAL ELEMENTS IS THE RESPONSIBILITY OF THE BUILDING ENGINEER OR ARCHITECT OF RECORD.

THE OPTIONAL GLAZING SHOWN ON THIS DRAWING MEETS THE WIND LOAD REQUIREMENTS OF THE FLORIDA BUILDING CODE OR INTERNATIONAL BUILDING CODE BUT DOES NOT MEET THE IMPACT RESISTANT REQUIREMENT FOR WINDBORNE DEBRIS REGIONS (REFER TO CHAPTER 16 FBC 18C).



DESIGN ENGINEER: MARK WESTERFIELD, P.E.
FLORIDA P.E. #48495, NC P.E. #23832, TEXAS P.E. #91513
DESIGN LOADS: +30 & -30 P.S.F.
TEST LOADS +45 & -45 P.S.F.

MANUFACTURING PRODUCT CODE:
MPC: C-AL-1F499

CLOPAY CORP.
ALL RIGHTS RESERVED.

Third Angle Projection

Unless Stated Otherwise
TOLERANCES are
.0 = ±.031
.00 = ±.015
.000 = ±.005
.0000 = ±.001
Degrees = ±1/2°
Unless Stated Otherwise
DIMENSIONS ARE IN INCHES.

Clopay Building Products Company
8585 Duke Boulevard
Mason, OH 45040 USA
Tel. No. 513-770-4800
Fax No. 513-770-4853

CLOPAY WINDLOAD RATING
W5

DESCRIPTION: M/N 902, C2AL 20'2" WIDE DES. +30/-30 PSF
DRAWN BY: RJK DATE: 3/24/04 SCALE: NONE DWG. SIZE B
CHECKED BY: MWW DATE: 4/1/04 SHEET 1 OF 1
DWG. NO.: 103296 VER: TDI