

NOTE: DOUBLE TRACK LOW HEADROOM, HI-LIFT TRACK, FOLLOW-THE-ROOF TRACK AND VERTICAL LIFT TRACK ARE AVAILABLE OPTIONS. 3" TRACK ALSO AVAILABLE.

MAX. 14'-2" WIDE X 18'-0" HIGH

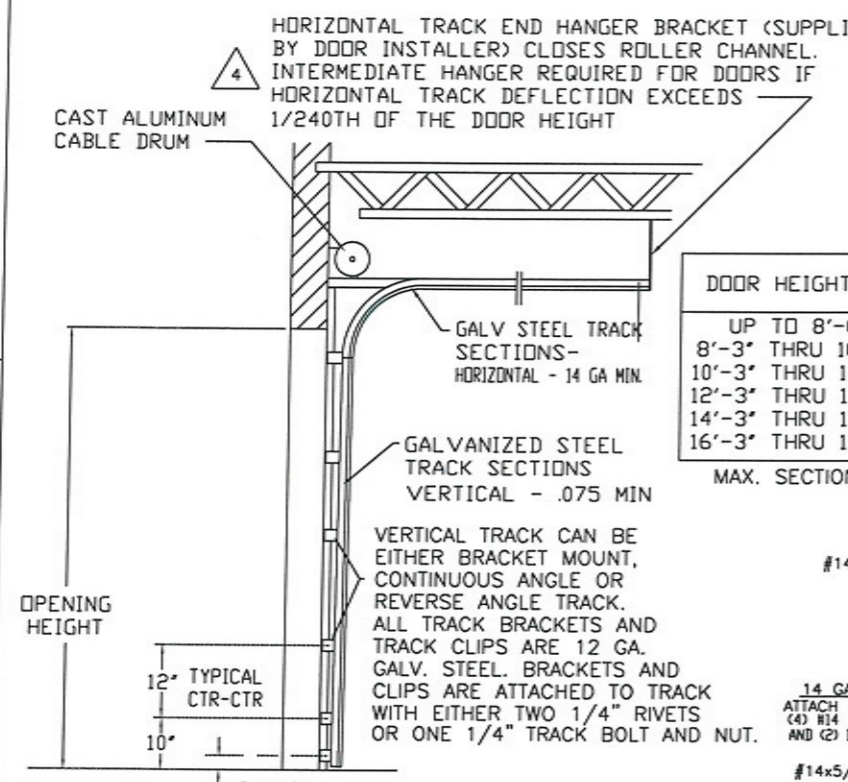
REVISIONS					
REV. NO.	ZONE	DATE	ECN NO.	APPVD.	DESCRIPTION
08	-	11/2008	-	-	ADDED MPC; UPDATED JAMB ATTACHMENTS.
09	-	02/2012	-	-	UPDATED WINDCODE CHART
10	-	08/2012	-	-	REVISED FOR TDI
11	-	06/2013	-	-	REMOVED GLAZING OPTION.
11	-	08/2016	-	-	REMOVED WIND SPEED TABLE.

MODELS AVAILABLE (CLOPAY/ HOLMES/ IDEAL)
 MODELS 524, 520/ 224/ C4ST, COST
 INSULATED MODELS 524S, 520S, 524V/ 224S/ C4SS, COSS, C4SV

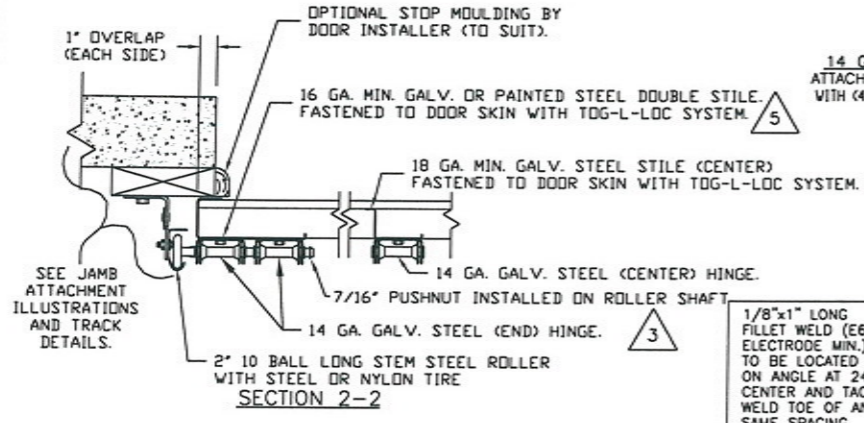
DOOR HEIGHT 'A'	NUMBER OF SECTIONS
UP TO 8'-0"	4
8'-3" THRU 10'-0"	5
10'-3" THRU 12'-0"	6
12'-3" THRU 14'-0"	7
14'-3" THRU 16'-0"	8
16'-3" THRU 18'-0"	9

MAX. SECTION HEIGHT: 24"

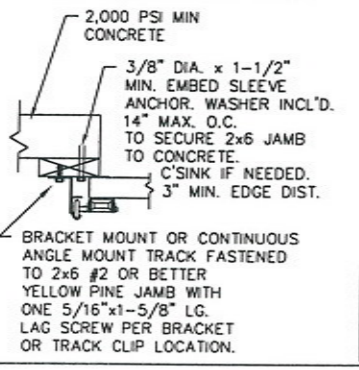
DOOR WIDTH	NUMBER OF CENTER STILES	NUMBER OF C-CHANNEL STRAPS
12'-3" THRU 13'-2"	2	6
13'-3" THRU 14'-2"	3	7



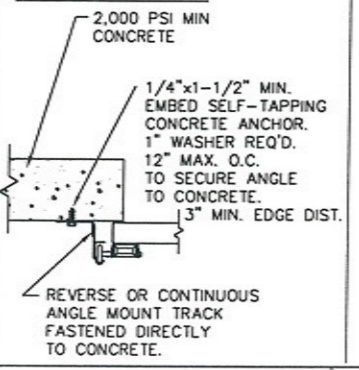
STANDARD-LIFT TRACK DETAILS



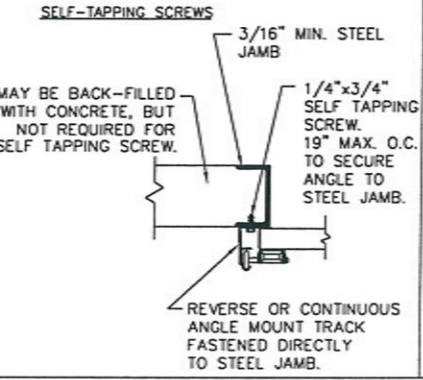
WOOD JAMB ON CONCRETE



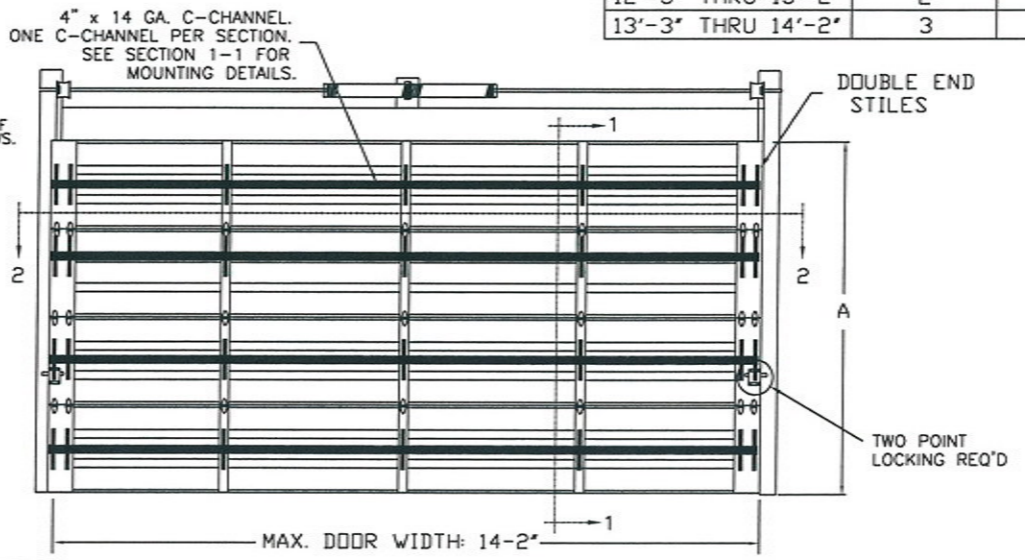
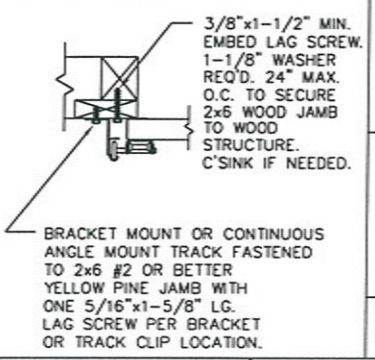
CONCRETE JAMBS



STEEL JAMBS

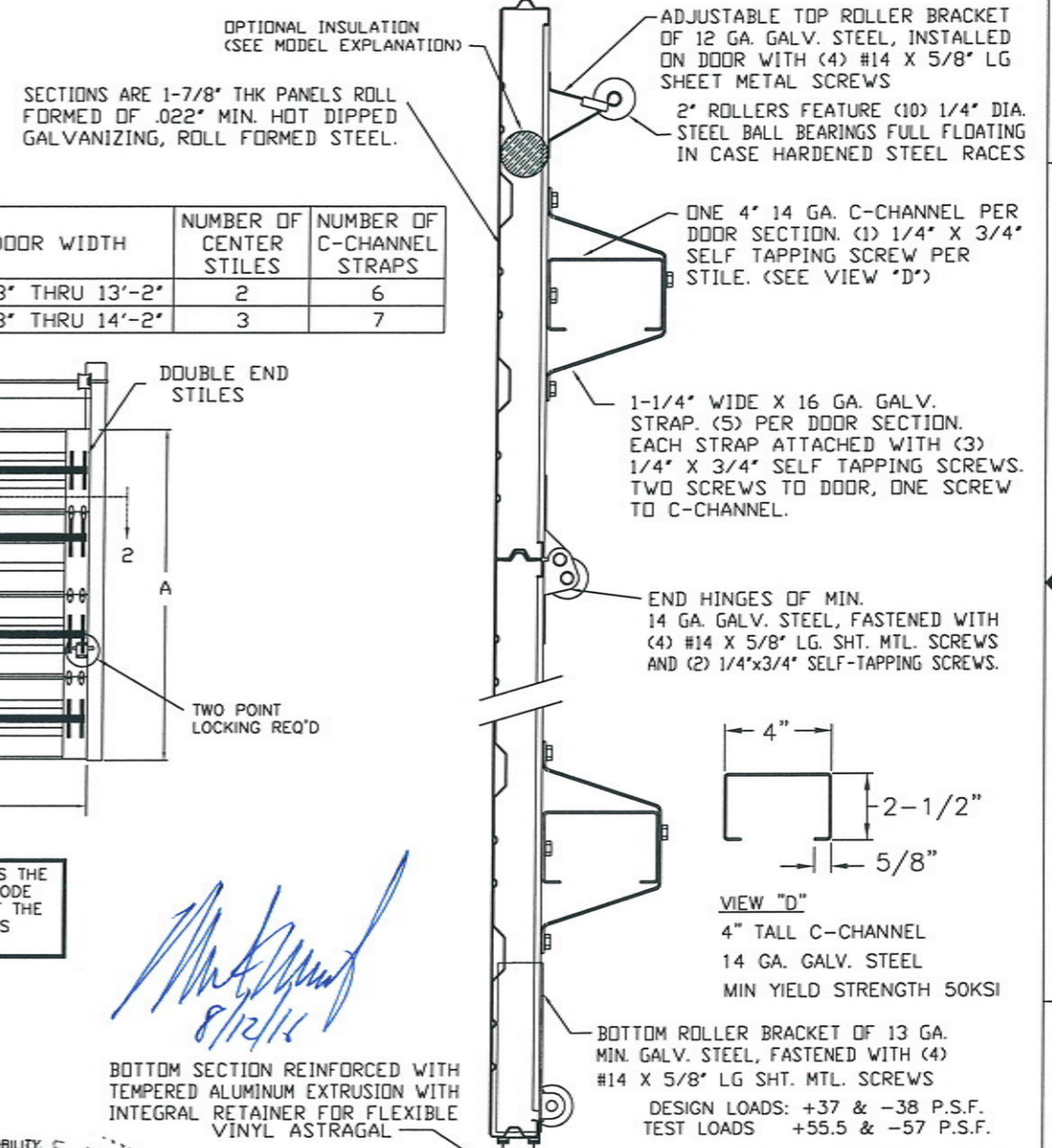


WOOD JAMBS



THE OPTIONAL GLAZING SHOWN ON THIS DRAWING MEETS THE WIND LOAD REQUIREMENTS OF THE FLORIDA BUILDING CODE OR INTERNATIONAL BUILDING CODE BUT DOES NOT MEET THE IMPACT RESISTANT REQUIREMENT FOR WINDBORNE DEBRIS REGIONS (REF. CHAPTER 16 FBC/IBC)

ANCHOR NOTE: FIRST (BOTTOM) ANCHOR STARTING AT NO MORE THAN HALF OF THE MAXIMUM ON-CENTER DISTANCE. HIGHEST ANCHOR INSTALLED AT LEAST AS HIGH AS THE DOOR OPENING.



Mark Westerfield
8/12/14

BOTTOM SECTION REINFORCED WITH TEMPERED ALUMINUM EXTRUSION WITH INTEGRAL RETAINER FOR FLEXIBLE VINYL ASTRAGAL

MARK WESTERFIELD, P.E.
FLORIDA P.E. #48495, NC P.E. #23832, TEXAS P.E. #91513

THE DESIGN OF THE SUPPORTING STRUCTURAL ELEMENTS IS THE RESPONSIBILITY OF THE BUILDING ENGINEER OR ARCHITECT OF RECORD.

Unless Stated Otherwise TOLERANCES are

±.031
 ±.015
 ±.005
 ±.001
 Degrees ± 1/2"

Third Angle Projection

Unless Stated Otherwise DIMENSIONS ARE IN INCHES.

SECTION 1 - 1

MANUFACTURING PRODUCT CODE: MPC: C-PAN-1E448

WINDLOAD RATING W6

DESCRIPTION: COMMERCIAL RIBBED DOOR, +37/ -38 PSF DESIGN LOAD

DRAWN BY: DAS DATE: 5/13/02 SCALE: NONE DWG. SIZE B

CHECKED BY: MWW DATE: 5/02 SHEET 1 OF 1

DWG. NO.: 102585 VER: TDI

Glopay Building Products Company
 8585 Duke Boulevard
 Mason, OH 45040 USA
 Tel. No. 513-770-4800
 Fax No. 513-770-4853