

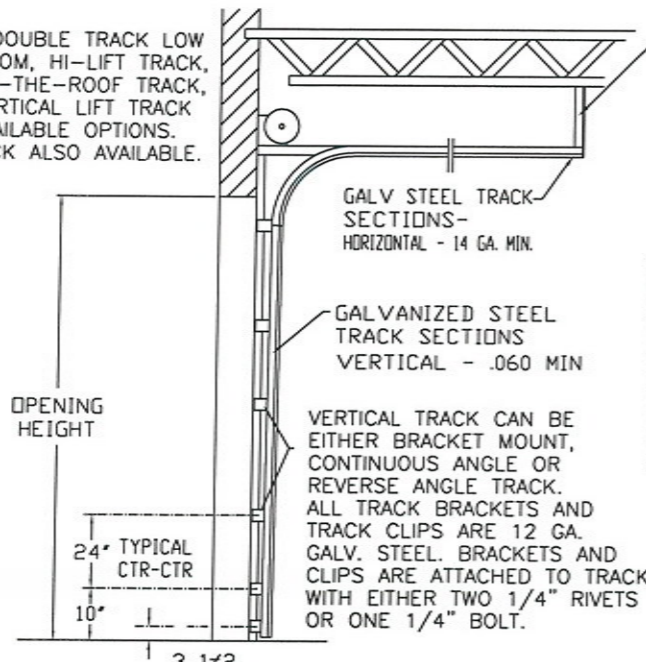
MODELS AVAILABLE (CLOPAY/ HOLMES/ IDEAL)
 MODELS 524, 520/ 224/ C4ST, C0ST
 INSULATED MODELS 524S, 520S, 524V/ 224S/ C4SS, C0SS, C4SV

MAX 8'-2" WIDE 18'-0" HIGH

REVISIONS					
REV. NO.	ZONE:	DATE:	ECN NO.	APPVD:	DESCRIPTION
10	-	10/2005	-	-	ADDED ROLLER OPTION
11	-	11/2008	-	-	ADDED MPC; UPDATED JAMB ATTACHMENT.
12	-	02/2012	-	-	UPDATED WINDCODE CHART
13	-	08/2012	-	-	REVISED FOR TDI
14	-	06/2013	-	-	REMOVED ACRYLIC AND WIRE GLAZING. SPECIFIED GLAZING DIMENSIONS.
15	-	08/2016	-	-	REMOVED WIND SPEED TABLES.

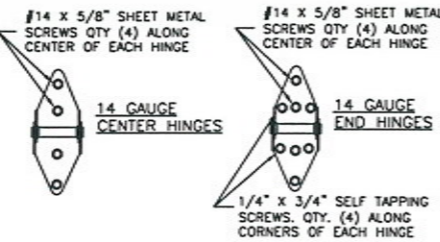
HORIZONTAL TRACK END HANGER BRACKET (SUPPLIED BY DOOR INSTALLER) CLOSES ROLLER CHANNEL. INTERMEDIATE HANGER REQUIRED FOR DOORS IF HORIZONTAL TRACK DEFLECTION EXCEEDS 1/240TH OF THE DOOR HEIGHT

NOTE: DOUBLE TRACK LOW HEADROOM, HI-LIFT TRACK, FOLLOW-THE-ROOF TRACK, AND VERTICAL LIFT TRACK ARE AVAILABLE OPTIONS. 3" TRACK ALSO AVAILABLE.



DOOR HEIGHT 'A'	NUMBER OF SECTIONS
UP TO 8'-0"	4
8'-3" THRU 10'-0"	5
10'-3" THRU 12'-0"	6
12'-3" THRU 14'-0"	7
14'-3" THRU 16'-0"	8
16'-3" THRU 18'-0"	9

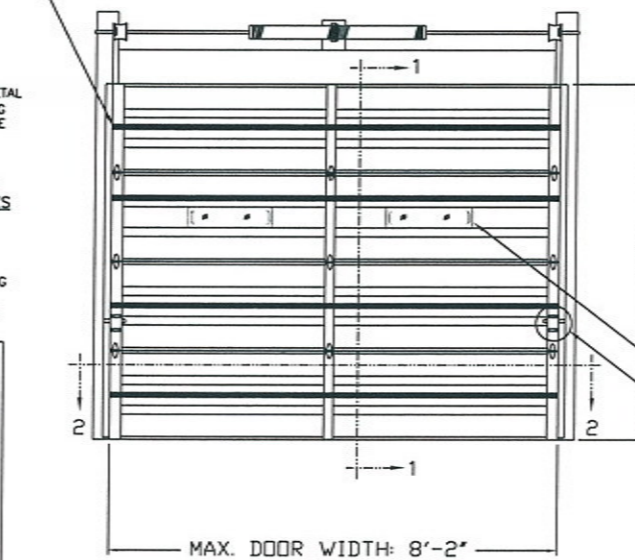
MAX. SECTION HEIGHT: 24"



THE OPTIONAL GLAZING SHOWN ON THIS DRAWING MEETS THE WIND LOAD REQUIREMENTS OF THE FLORIDA BUILDING CODE OR INTERNATIONAL BUILDING CODE BUT DOES NOT MEET THE IMPACT RESISTANT REQUIREMENT FOR WINDBORNE DEBRIS REGIONS (REF. CHAPTER 16 FBC/IBC)

SECTIONS ARE 1-7/8" THK PANELS ROLL FORMED OF .019" MIN. HOT DIPPED GALVANIZING, ROLL FORMED STEEL.

2-1/4" x 20 GA. GALV. STEEL U-BAR. ONE U-BAR PER DOOR SECTION U-BARS ATTACHED AT EACH STILE LOCATION WITH (2) 1/4" x 3/4" SELF-TAPPING SCREWS



OPTIONAL INSULATION (SEE MODEL EXPLANATION)



OPTIONAL ALUMINUM FULL VISION WINDOW LITE SECTIONS AVAILABLE (1/8" DSB) FULL VISION SECTIONS TO HAVE 2" x 2" x 1/8" L-ANGLE HORIZONTAL REINFORCEMENT. L-ANGLES ATTACHED TO THE REINFORCING RIB WITH (2) 1/4"-20 X 5/8" HEX HEAD BOLTS AND NUTS AT EVERY HINGE LOCATION.
 OPTIONAL 24" x 6" POLYPROPYLENE SCREW TOGETHER FRAME TYPE DSB WINDOW LITES AVAILABLE.

TWO POINT LOCKING REQ'D

ADJUSTABLE TOP ROLLER BRACKET OF 12 GA. GALV. STEEL, INSTALLED ON DOOR WITH (4) #14 X 5/8" LG SHEET METAL SCREWS

END HINGES OF MIN. 14 GA. GALV. STEEL, FASTENED WITH (4) #14 X 5/8" LG. SHT. MTL. SCREWS AND (4) 1/4"x3/4" SELF-TAPPING SCREWS.

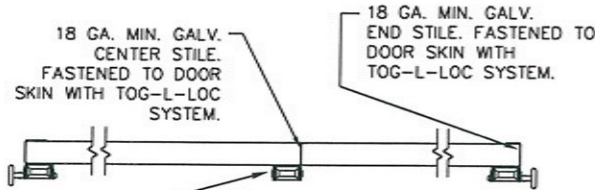
2" 10 BALL SHORT STEM STEEL ROLLER WITH STEEL OR NYLON TIRE

BOTTOM ROLLER BRACKET OF 13 GA. GALV. STEEL, FASTENED WITH (4) #14 X 5/8" LG SHT. MTL. SCREWS

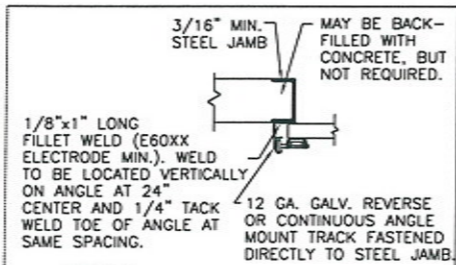
SECTION 1-1

DESIGN LOADS: +30 & -30 P.S.F.
 TEST LOADS +45 & -45 P.S.F.

SIDE ELEVATION STANDARD-LIFT TRACK DETAILS



SECTION 2-2



WELDED

STEEL JAMBS

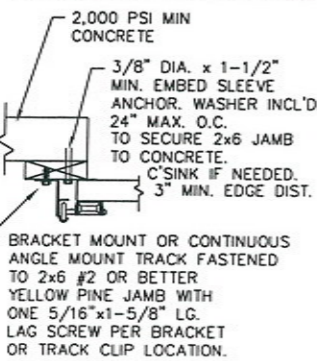
WOOD JAMBS

THE DESIGN OF THE SUPPORTING STRUCTURAL ELEMENTS IS THE RESPONSIBILITY OF THE BUILDING ENGINEER OR ARCHITECT OF RECORD.

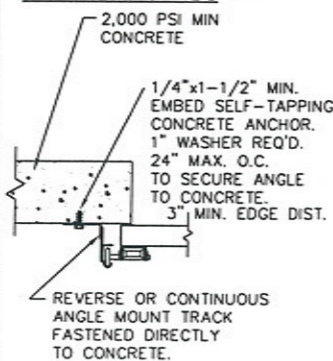
MARK WESTERFIELD, P.E.
 FLORIDA P.E. #48495, NC P.E. #23832,
 TEXAS P.E. #91513

MANUFACTURING PRODUCT CODE:
 MPC: C-PAN-1E448

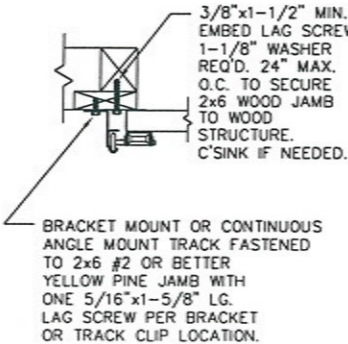
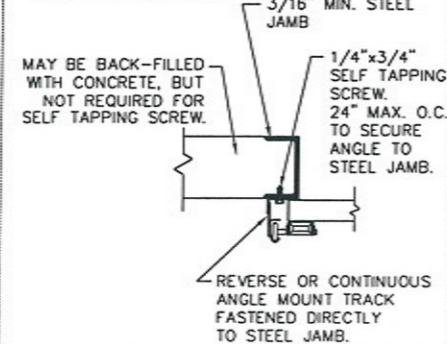
WOOD JAMB ON CONCRETE



CONCRETE JAMBS



SELF-TAPPING SCREWS



Unless Stated Otherwise TOLERANCES are

- .0 = ±.031
- .00 = ±.015
- .000 = ±.005
- .0000 = ±.001
- Degrees = ±1/2"



8585 Duke Boulevard
 Mason, OH 45040 USA
 Tel. No. 513-770-4800
 Fax No. 513-770-4853

WINDLOAD RATING
 W5

DESCRIPTION: COMMERCIAL RIBBED DOOR, 8' 2" WIDTH, +/- 30 PSF DESIGN LOAD

DRAWN BY: RJK DATE: 4/19/99 SCALE: NOTED DWG. B
 CHECKED BY: MWW DATE: 4/99 SHEET 1 OF 1 SIZE B

DWG. NO.: 101874



Unless Stated Otherwise DIMENSIONS ARE IN INCHES.