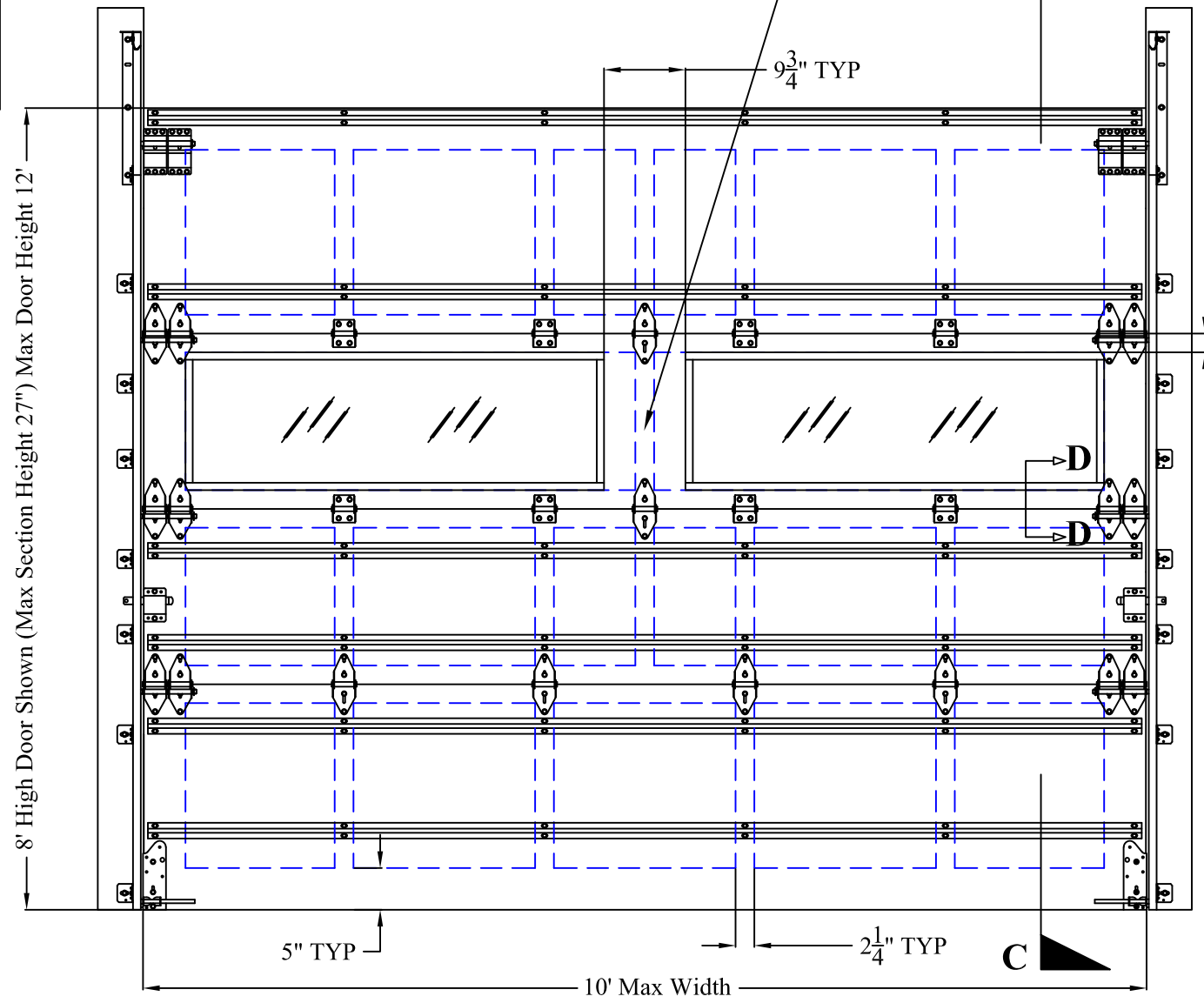


2-1/4" x 1-3/8"  
Vertical Stile Douglas Fir  
Frame. Fastened with 1"X1"  
16 GA crown staples. With  
additional 1-3/8" Douglas  
Fir filler blocking 9-3/4"  
(TYP). Attached with 1"X1"  
16 GA crown staples.

2-1/4" x 1-3/8" Douglas Fir  
Frame. Fastened with 1"X1" 16 GA  
crown staples

5" x 1-3/8" Douglas Fir  
Frame. Fastened with 1"X1" 16 GA  
crown staples

2-1/4" x 1-3/8"  
Vertical Stile Douglas Fir  
Frame. Fastened with 1"X1"  
16 GA crown staples. With  
additional 1-3/8" Douglas  
Fir filler blocking 9-3/4"  
(TYP). Attached with 1"X1"  
16 GA crown staples.



Complies with IBC/IRC 2018 (TEXAS)  
Tested in accordance with  
TAS 202 &  
TAS 201/203  
Design Pressure: +48/-55 PSF  
Test Pressure: +72/-82.5 PSF  
Large Missile Impact Resistant  
**Note:** The design of the supporting  
structural elements shall be the  
responsibility of the professional of  
record for the structure and in  
accordance with current building  
codes for the loads listed on this  
document  
**Note:** This drawing provides  
windload assembly details for the  
claimed size and pressures

DRAWN BY:	J.A.C.	CHECKED BY:	J.A.C.
PLOT:	1-20	DATE:	06/03/2021
NO.		REVISION DESCRIPTION	
BY		DATE	

**DRAWING TITLE**  
10 X 8 CARRIAGE HOUSE DOOR +48/-55 PSF

**MANUFACTURER**  
HOME FACTORIES INC.  
dba CARRIAGE HOUSE DOOR  
1517 EAST MAIN ST.  
OLD FORT N.C., 28762  
828-668-1600

**CONSULTANTS**  
JOHN E. SCATES, PE  
2560 KING ARTHUR #124-54  
LEWISVILLE, TX 75056  
FL PE 51737  
TX PE 56308 / F-2203

CERTIFICATION

DRAWN BY: J.A.C.	CHECKED BY: J.A.C.
PLOT: N/A	DATE: 06/03/2021
NO.	REVISION DESCRIPTION
BY	DATE

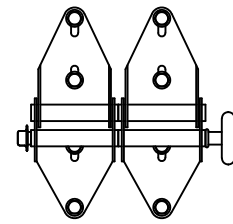
**DRAWING TITLE**  
10 X 8 CARRIAGE HOUSE DOOR +48/-55 PSF

**MANUFACTURER**  
HOME FACTORIES INC.  
dba CARRIAGE HOUSE DOOR  
1517 EAST MAIN ST.  
OLD FORT N.C., 28762  
828-668-1600

**CONSULTANTS**  
JOHN E. SCATES, PE  
2560 KING ARTHUR #124-54  
LEWISVILLE, TX 75056  
FL PE 51737  
TX PE 56308 / F-2203

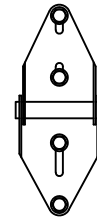
**CERTIFICATION**

DRAWING NO. 1756	REV.
SHEET NO. 2 OF 5	

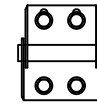


**End Hinge**  
11 gauge galvanized steel double end hinges attached with four 1/4" x 2 1/4" carriage bolts or four 1/4" x 1 1/4" lag screws

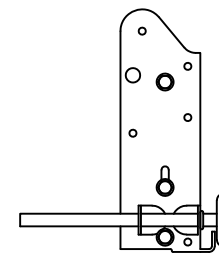
**Roller**  
2" steel or nylon roller with a hardened 7" stem and push nut installed (hurricane roller)



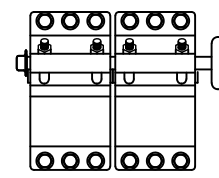
**Center Hinge**  
11 gauge galvanized steel hinge at each center stile attached with four 1/4" x 2 1/4" carriage bolts or four 1/4" x 1 1/4" lag screws



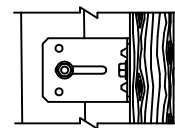
**Short Center Hinge**  
11 gauge galvanized steel hinge at each center stile attached with four 1/4" x 2 1/4" carriage bolts or two 1/4" x 1 1/4" lag screws (for use on glass section)



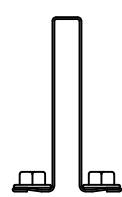
**Bottom Bracket**  
11 gauge galvanized steel bottom bracket attached to bottom section with three 1/4" x 2 1/4" carriage bolts or three 1/4" x 1 1/4" lag screws (no push nut required on bottom roller)



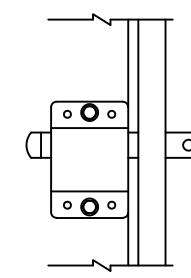
**Top Fixture**  
12 gauge galvanized steel double top fixtures attached with six 1/4" x 1 1/4" lag screws each (push nut is required on top roller)



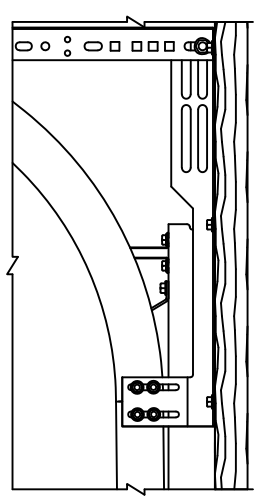
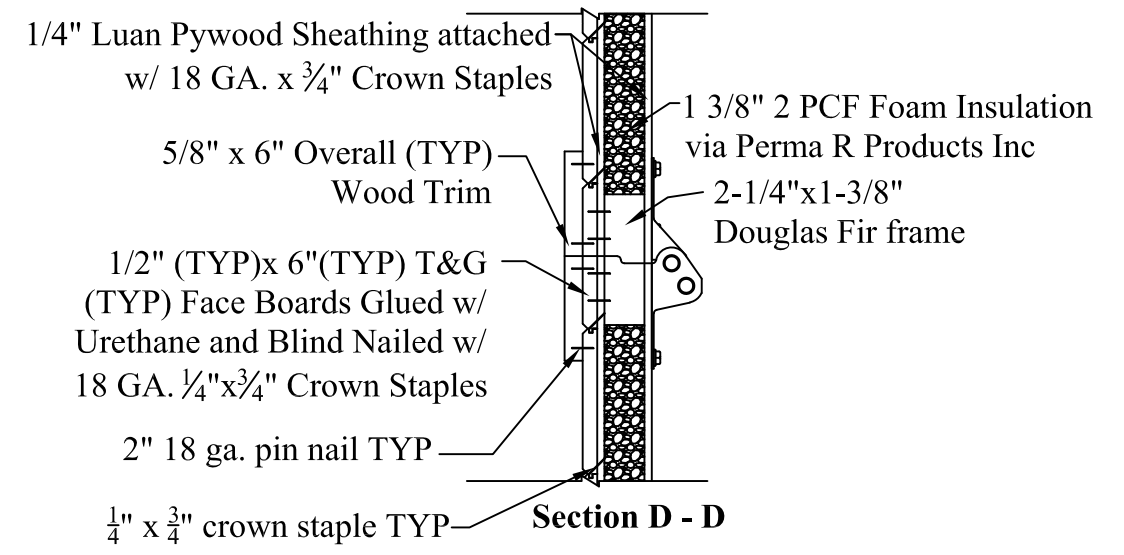
**Track Brackets**  
12 gauge galvanized steel track bracket attached to wood jamb with one 5/16" x 1 5/8" wood lag screw and to vertical track with one 1/4" x 5/8" track bolt and nut



**Struts**  
3" 20 gauge 50 ksi hat strut attached with two 1/4" x 1 1/4" lag screws per stile and located as shown on the sections



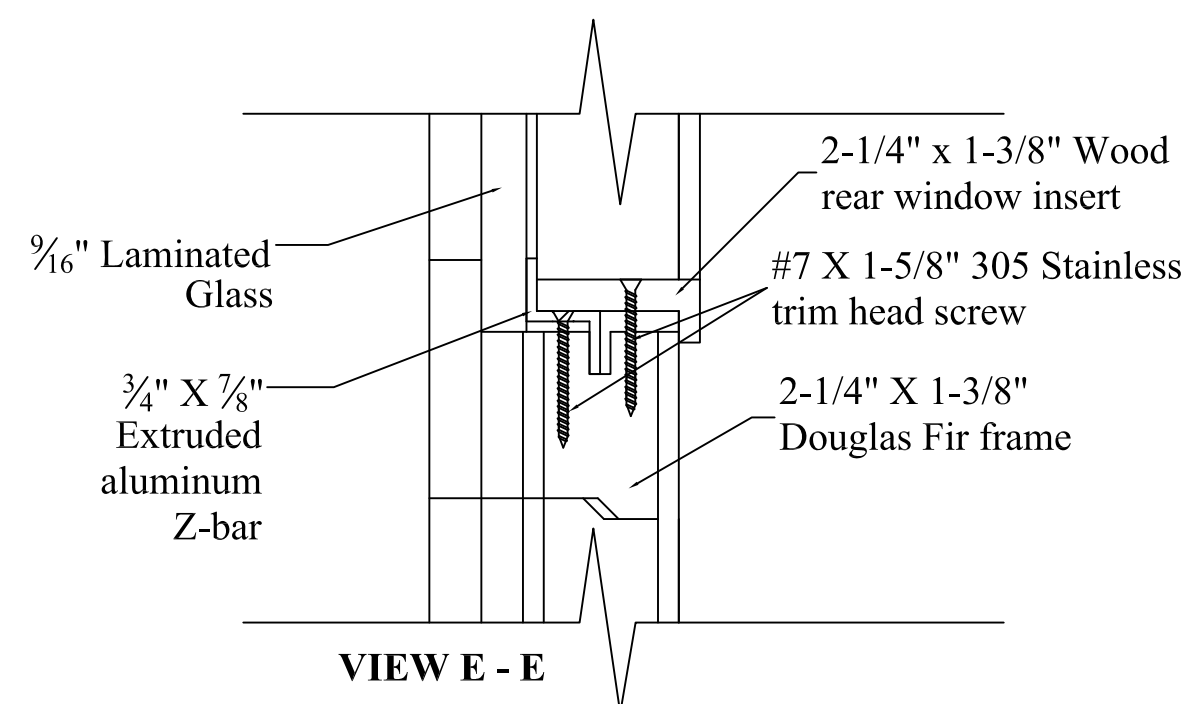
**Locking Mechanism**  
Doors must have locking device installed. Door may have two slide locks. (inside slide lock shown)



**Flag Bracket**  
12 gauge galvanized steel flag bracket attached to wood jamb with three 5/16" x 1 5/8" wood lag screws and to the horizontal and vertical tracks with two 1/4" x 3/4" track bolts and nuts each

**Horizontal Track and Angle**  
Horizontal track and angle to suit

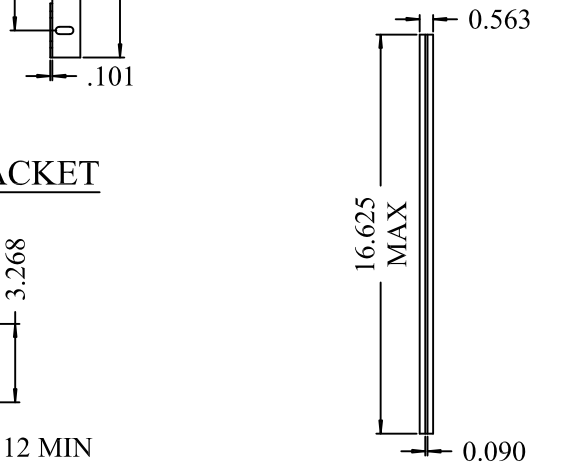
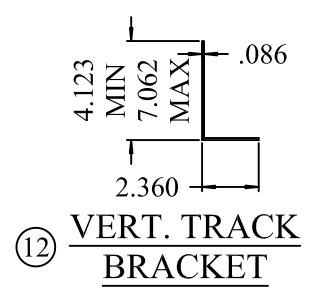
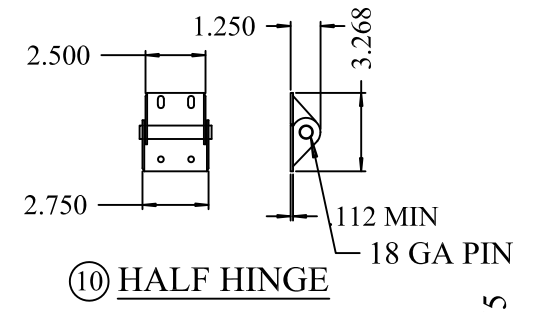
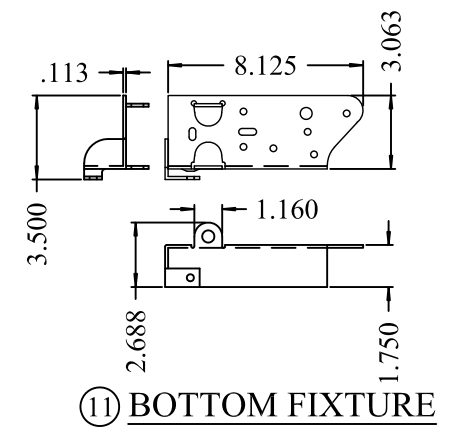
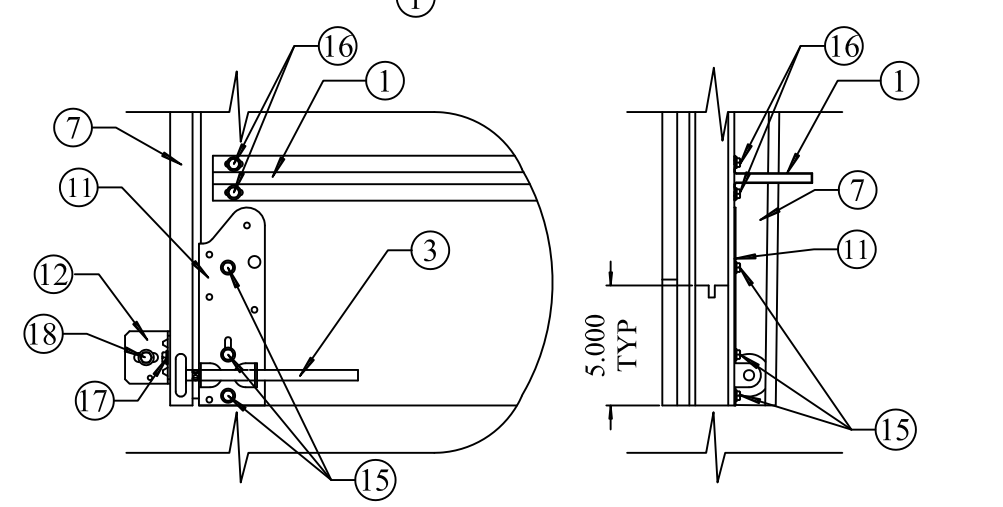
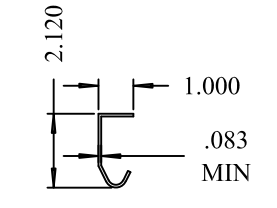
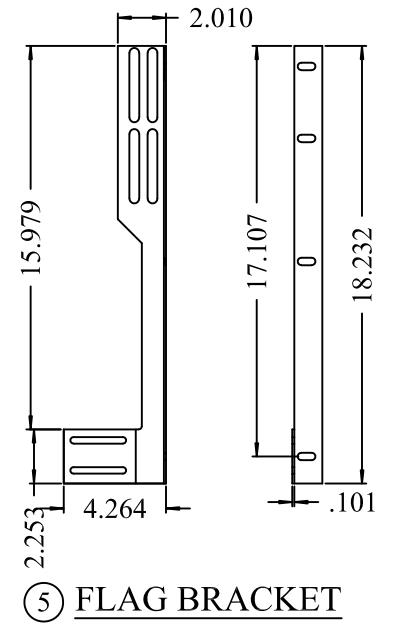
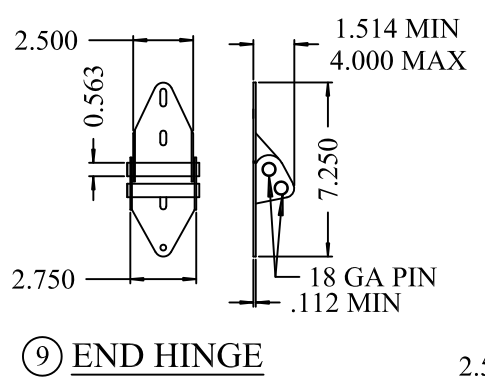
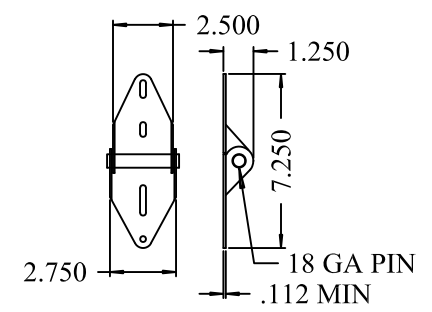
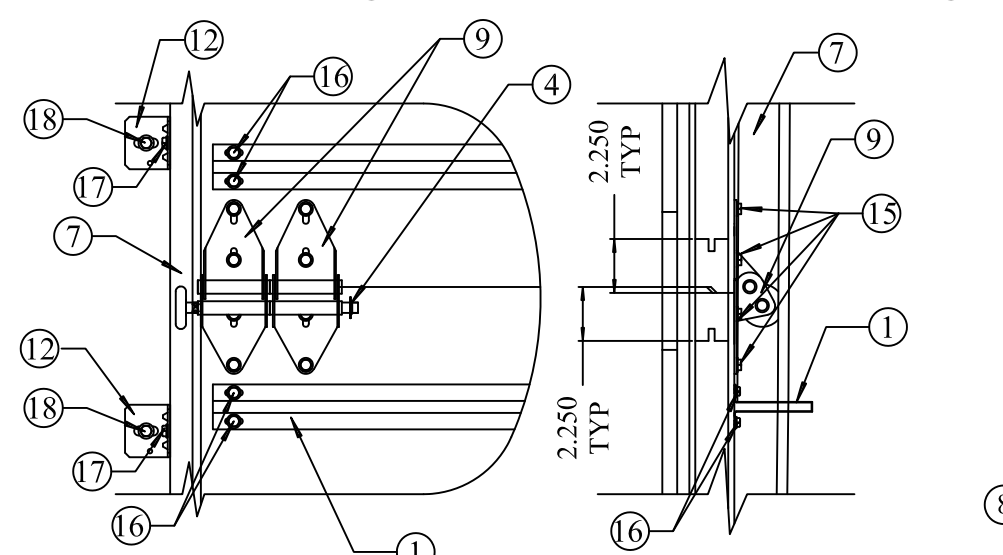
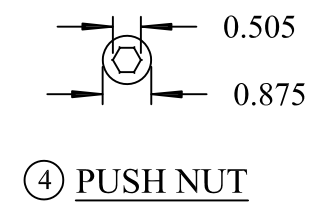
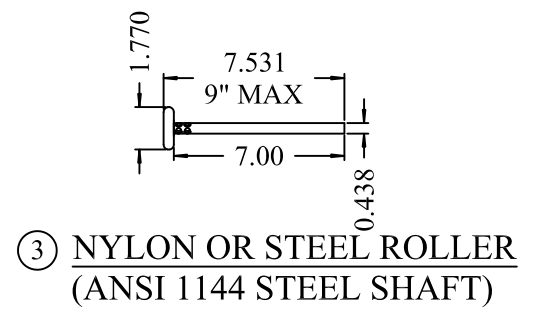
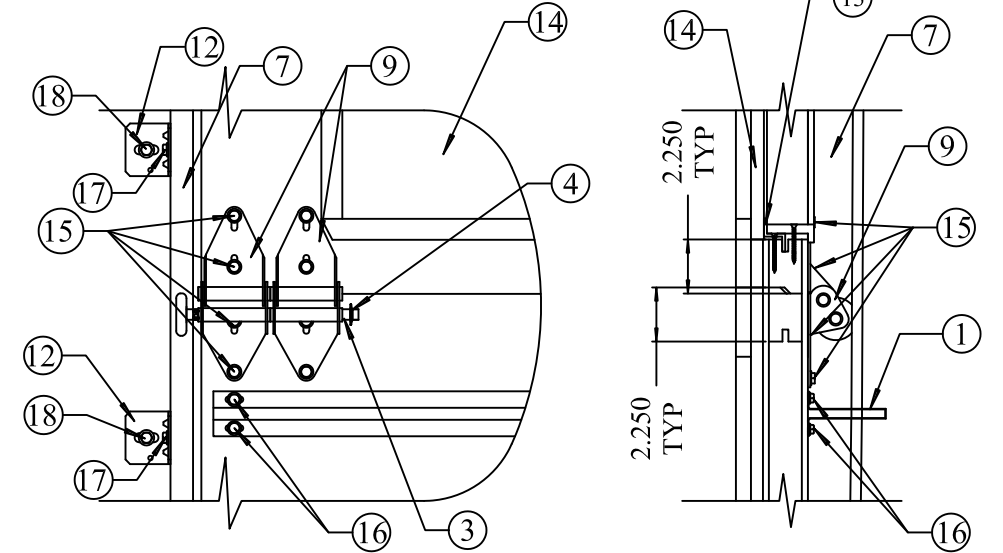
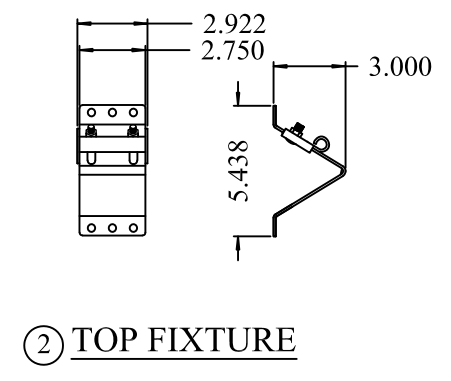
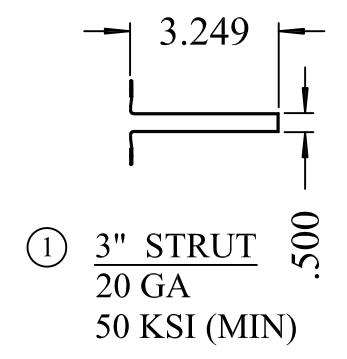
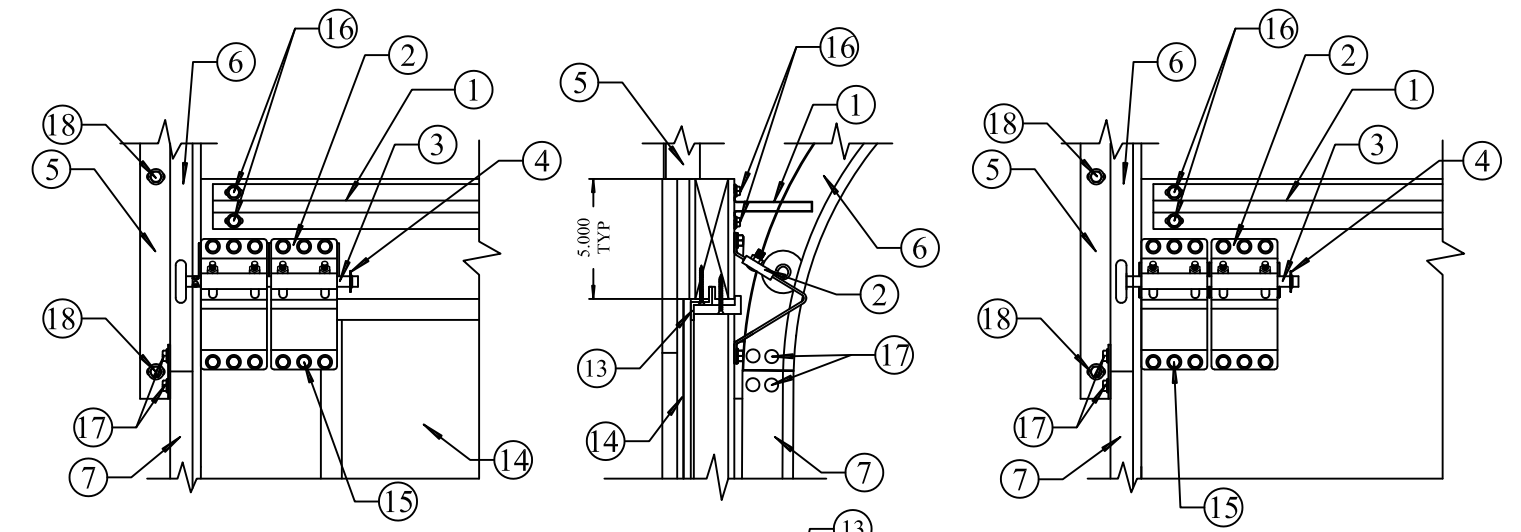
**Vertical Track**  
2" galvanized steel track with a minimum thickness of .083"



ALL FASTENERS AND MATERIALS OTHER THAN LISTED ARE IDENTICAL AS VIEW D-D

**Windows (optional)**  
9/16" thick laminated 1/4" Annealed glass, .090" Saflex® Clear PVB manufactured by SOLUTIA INC., 1/4" Annealed glass. Windows with a maximum opening of 47" x 16 5/8" on the front and 48 3/4" x 18 3/8" on the back, retained on all four sides by an extruded aluminum retainer and wood rear window insert attached with #7 x 1 5/8" stainless steel trim head screws (Glass Bite on all four sides is 7/8"), and sealed on all four edges with Dow Corning 995 sealant

DRAWN BY: J.A.C.		CHECKED BY: J.A.C.	
PLOT: N/A		DATE: 06/03/2021	
NO.	REVISION DESCRIPTION	BY	DATE

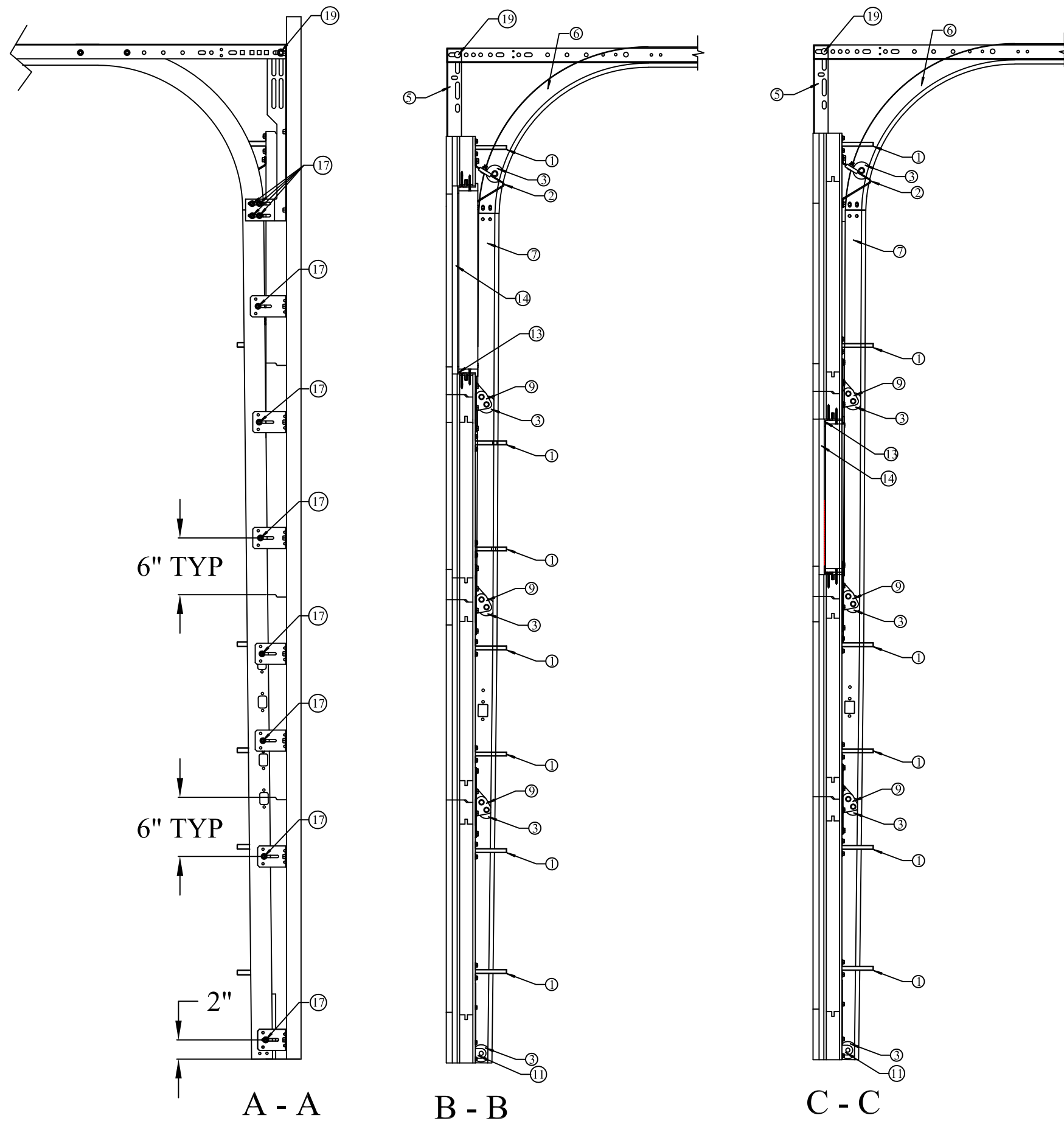


DRAWING TITLE: **10 X 8 CARRIAGE HOUSE DOOR +48/-55 PSF**

CONSULTANTS: HOME FACTORIES INC.  
dba CARRIAGE HOUSE DOOR  
1517 EAST MAIN ST.  
OLD FORT N.C., 28762  
828-668-1600

MANUFACTURER: JOHN E. SCATES, PE  
2560 KING ARTHUR #124-54  
LEWISVILLE, TX 75056  
FL PE 51737  
TX PE 56308 / F-2203

CERTIFICATION



ITEM #	ITEM DESCRIPTION	MANUFACTURER/NOTES
PARTS AND HARDWARE		
1	3" STRUT	20 GA 50KSI
2	TOP FIXTURE	12 GA
3	ROLLER	ANSI 1144 STEEL SHAFT
4	PUSH NUT	
5	FLAG BRACKET	12 GA
6	HORIZONTAL TRACK	12 GA
7	VERTICAL TRACK	12 GA
8	INTERMEDIATE HINGE	11 GA
9	END HINGE	11 GA
10	HALF HINGE	11 GA
11	BOTTOM FIXTURE	11 GA
12	TRACK BRACKET	12 GA
13	ALUMINUM RETAINER	6063 T5
14	HURRICANE GLASS	
MISCELLANEOUS FASTENERS		
15	1/4" X 2 1/4" CARRIAGE BOLT AND NUT OR 1/4" X 1 1/2" LAG SCREW	FOR HINGES AND HARDWARE
16	1/4" X 2 1/4" CARRIAGE BOLT AND NUT OR 1/4" X 1 1/4" LAG SCREW	FOR STRUTS
17	1/2" X 20 X 3/4" TRACK BOLT AND NUT	
18	3/16" X 1 1/2" LAG SCREW	
19	3/8" X 20 X 3/4" TRACK BOLT AND NUT	

NO.	REVISION DESCRIPTION	BY	DATE
1-12			

**10 X 8 CARRIAGE HOUSE DOOR +48/-55 PSF**

MANUFACTURER

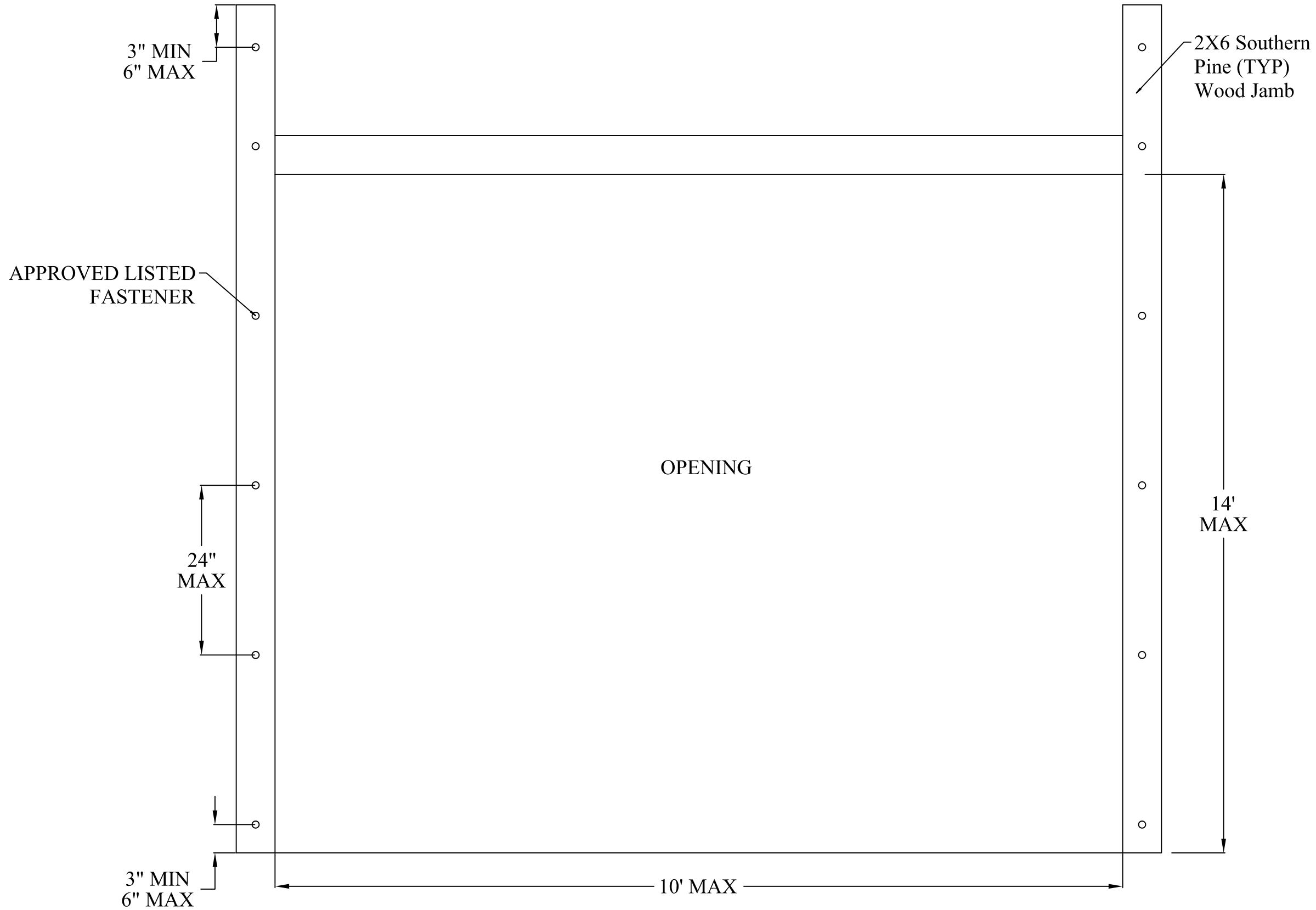
HOME FACTORIES INC.  
dba CARRIAGE HOUSE DOOR  
1517 EAST MAIN ST.  
OLD FORT N.C., 28762  
828-668-1600

CONSULTANTS

JOHN E. SCATES, PE  
2560 KING ARTHUR #124-54  
LEWISVILLE, TX 75056  
FL PE 51737  
TX PE 56308 / F-2203

CERTIFICATION

ITEM #		DRAWN BY: J.A.C.	CHECKED BY: J.A.C.
	2 X 6 (TYP) SOUTHERN PINE (OR BETTER) FASTENERS TO STRUCTURE	PLOT: N/A	DATE: 06/03/2021
	2500 PSI CONCRETE		
1	3/8" DEWALT SCREW BOLT + W/1-1/4" WASHER Embed 3.5", Min Edge Dist 3.5", Min spacing 9"	DATE	
2	3/8" POWERS WEDGE BOLT + W/1-1/4" WASHER Embed 3.5", Min Edge Dist 3.5", Min spacing 9"	BY	
3	3/8" HILTI KWIK KH-EZ W/1-1/4" WASHER Embed 3.5", Min Edge Dist 3", Min spacing 9"	REVISION DESCRIPTION	
	FILLED CMU	NO.	
4	3/8" DEWALT SCREW BOLT + W/1-1/4" WASHER Embed 3.25", Min Edge Dist 1.5", Min spacing 3"		
5	3/8" HILTI KWIK BOLT W/1-1/4" WASHER Embed 3.5", Min Edge Dist 4", Min spacing 6"		
	WOOD SPRUCE/PINE/FIR S.G. ≥ .42 (2x6 IS ALWAYS SOUTHERN PINE)		
6	3/8"x3" LAG SCREW W/ 1-1/8" WASHER ON 24" SPACING		



**DRAWING TITLE**  
10 X 8 CARRIAGE HOUSE DOOR +48/-55 PSF

**CONSULTANTS**  
JOHN E. SCATES, PE  
2560 KING ARTHUR #124-54  
LEWISVILLE, TX 75056  
FL PE 51737  
TX PE 56308 / F-2203

**MANUFACTURER**  
HOME FACTORIES INC.  
dba CARRIAGE HOUSE DOOR  
1517 EAST MAIN ST.  
OLD FORT N.C., 28762  
828-668-1600

CERTIFICATION