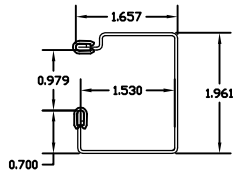
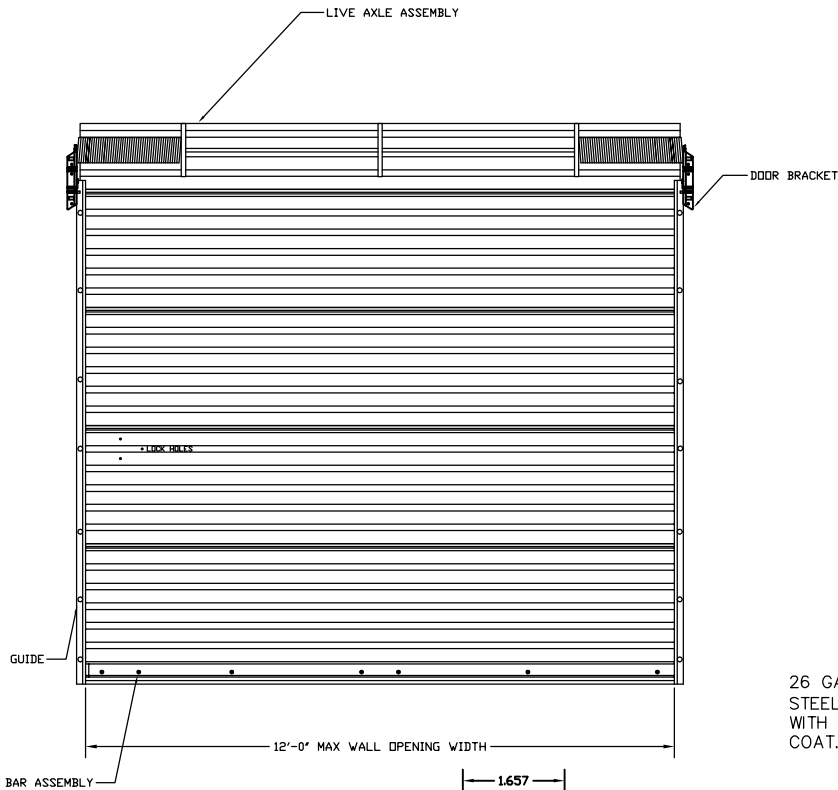
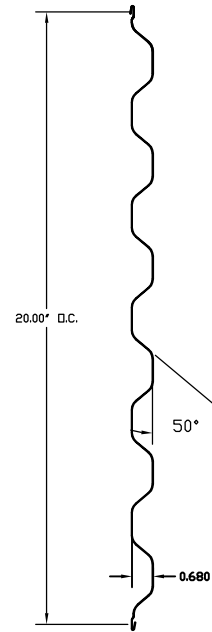


DRAWING NO.  
944WL



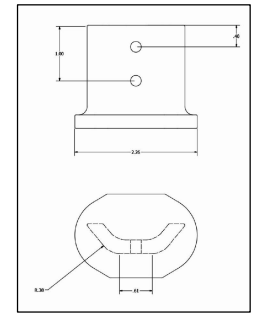
**GUIDE DETAIL - LH SHOWN**  
18 GAUGE (0.047" MIN.) ASTM A-653 STEEL, HOT DIPPED GALVANIZED PER ASTM A-924 (G-40). FACTORY INSTALLED POLYPROPYLENE GUIDE RUNNER.

SPACEGUARD LATCH FACTORY INSTALLED - STEEL AND ZINC CAST PART WITH POWDER COATING FINISH. SECURED WITH 3 - 3/8" JAM NUTS



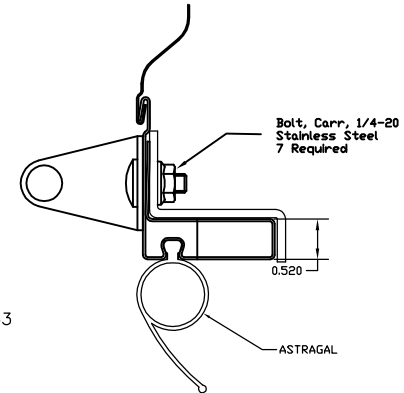
**DOOR PANEL**

26 GAUGE (0.018" MIN.) GRADE 80 STEEL PER ASTM A-653 STEEL, HOT DIPPED GALVANIZED PER ASTM A-924 (G-40). WITH FULL COAT OF PRIMER AND BAKED POLYESTER FINISH COAT.



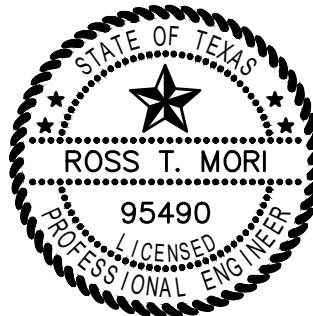
**WINDLOCK**

BLACK NYLON 6/6. WINDLOCKS ARE LOCATED AS REQUIRED TO MEET SPECIFIC WINDLOAD AND SECURED WITH TWO 3/8" ZINC PLATED RIVETS.



**BOTTOM BAR ASSEMBLY**

22 GAUGE (0.030" MIN.) ASTM A1011 GALVALUME, HOT DIPPED, MIN. YIELD OF 50 KSI, ROLL FORMED. BACKUP ANGLE TO BE MANUFACTURED FROM 12 GAUGE ASTM A-653 STEEL, HOT DIPPED GALVANIZED PER ASTM A-924 (G-40)



THIS DRAWING AND ALL PARTS THEREOF ARE THE EXCLUSIVE PROPERTY OF TRAC RITE DOOR, INC. AND MAY NOT BE REPRODUCED IN WHOLE OR PART WITHOUT WRITTEN PERMISSION.  
TOLERANCE (UNLESS OTHERWISE SPECIFIED)  
LINEAR: ± .032"  
ANGULAR: ± 2'

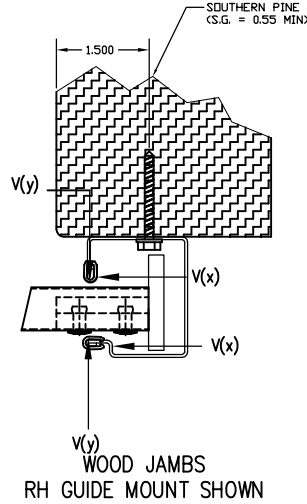
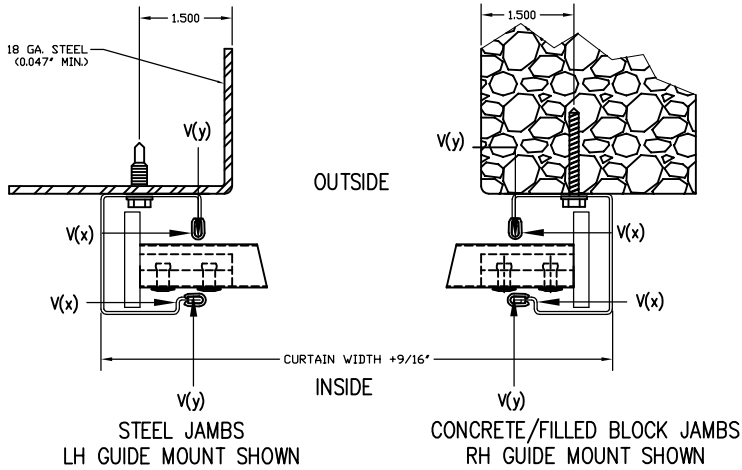
**Trac-Rite Door, Inc.**  
314 Wilburn Road, Sun Prairie, WI 53590  
Phone: 800-448-8979 Fax: 800-236-8722  
www.tracrite.com

DATE	02-16-22	DESCRIPTION	944 WINDLOCK DOOR	
BY	JSB	APP'D	JSB	DRAWING NO.
SCALE	N/A	SIZE	B	REV.
				SHEET
			944WL	1 OF 2

REV.	ECN	DESCRIPTION	BY	DATE

DRAWING NO.  
**944WL**

**SUPERIMPOSED LOAD DIAGRAM**  
GUIDE FASTENERS @ 9.00" MAX. O.C.

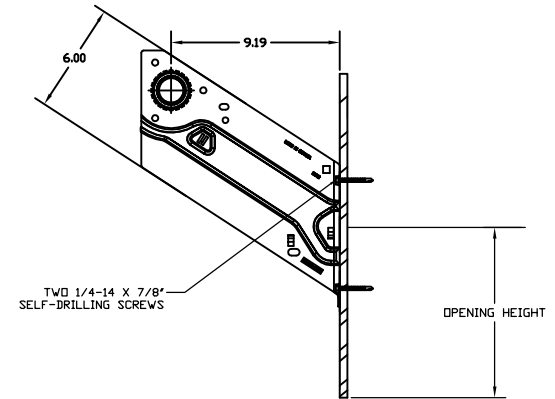


MAX DOOR WIDTH	MAX DOOR HEIGHT	DESIGN LOAD + (PSF)	V <sub>x</sub> + (PLF)	V <sub>y</sub> + (PLF)	DESIGN LOAD - (PSF)	V <sub>x</sub> - (PLF)	V <sub>y</sub> - (PLF)
8'-0"	12'-0"	34	0	136	37	0	148
9'-0"	12'-0"	34	0	153	37	0	167
10'-0"	12'-0"	24	0	120	22	0	110
11'-0"	12'-0"	24	30	132	22	55	121
12'-0"	12'-0"	24	119	144	22	150	132

WIND LOCK SPACING @ 16.75" MAX. O.C.

**DOOR MOUNTING BRACKET TO STEEL**

14 GAUGE (0.075" MIN.) ASTM A-653 STEEL, HOT DIPPED GALVANIZED PER ASTM A-924. EVERY BRACKET INCLUDES GREASE PACKED BALL BEARING.

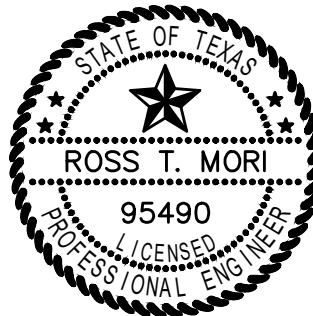


**NOTES:**

- STRUCTURAL PERFORMANCE UNDER UNIFORM LOAD PER ASTM E 330 TO SAFELY RESIST A POSITIVE OR NEGATIVE WIND LOAD AS NOTED ABOVE. A TEST LOAD OF 1.5 X DESIGN LOAD HAS BEEN USED.
- ALL DOORS COMPLY WITH THE 2018 IRC/IBC.
- THE DOOR ASSEMBLY SHALL BE INSTALLED IN ACCORDANCE WITH THE MANUFACTURER'S INSTALLATION INSTRUCTIONS.
- WIND LOADS FOR BUILDING OPENINGS SHALL BE DETERMINED BY A PROFESSIONAL ENGINEER USING APPROPRIATE WIND SPEED AND DESIGN CRITERIA. THIS DOOR MAY BE USED WHERE THE DESIGN LOAD MEETS OR EXCEEDS THE DESIGN LOAD FOR THE BUILDING OPENING.
- SUPERIMPOSED LOADS ON THE JAMBS FROM THIS DOOR ARE DESIGNED AS V(x) AND V(y) HEREIN. CONTRACTORS SHALL HAVE BUILDING ENGINEER VERIFY ADEQUACY OF BUILDING STRUCTURE TO RESIST SUPERIMPOSED LOAD V(x), V(y), AND BRACKET LOADS SHOWN
- ALL WELDING SHALL BE PERFORMED BY QUALIFIED WELDERS IN ACCORDANCE WITH A.W.S. SPECIFICATIONS, LATEST EDITION. ALL WELDING ELECTRODES SHALL CONFORM TO A.W.S. A5.1 GRADE E-70.
- ALL BOLTS AND WASHERS SHALL BE GALVANIZED OR STAINLESS STEEL WITH A MINIMUM TENSILE STRENGTH OF 60 KSI.
- FASTENERS NOTES
  - EMBEDMENT LENGTH DOES NOT INCLUDE STUCCO FINISH.
  - FOR HOLLOW MASONRY, FILL ALL CELLS @ ANCHOR WITH 2500 PSI GROUT.
  - ANCHORS SHALL BE INSTALLED IN ACCORDANCE WITH MANUFACTURERS SPECIFICATIONS.

**FASTENERS REQUIRED**

MOUNTING CONSTRUCTION	DOOR GUIDE	DOOR BRACKET
STEEL	SELF-DRILLING SCREW 1/4-14 x 7/8"	SELF-DRILLING SCREW 1/4-14 x 7/8"
WOOD	LAG SCREW 1/4 x 1 1/2"	LAG SCREW 5/16 x 1 5/8"
CONCRETE	DEWALT SCREW BOLT+ 1/4" x 1 3/4"	DEWALT SCREW BOLT+ 3/8" x 4"



THIS DRAWING AND ALL PARTS THEREOF ARE THE EXCLUSIVE PROPERTY OF TRAC-RITE DOOR, INC. AND MAY NOT BE REPRODUCED IN WHOLE OR PART WITHOUT WRITTEN PERMISSION.

**Trac-Rite Door, Inc.**  
314 Wilburn Road, Sun Prairie, WI 53590  
Phone: 800-448-8979 Fax: 800-236-8722  
www.tracrite.com

DATE: 02-16-22  
DESCRIPTION: 944 WINDLOCK DOOR  
BY: JSB APP'D: JSB  
DRAWING NO.: 944WL  
SCALE: N/A SIZE: B  
REV. SHEET: -- 2 OF 2

REV.	ECN	DESCRIPTION	BY	DATE