

BRAND	MODERN STEEL		COMMERCIAL DOORS	
	FLUSH	GROOVED	FLUSH	GROOVED
CLOPAY	9208, HDPC2	9209, HDPCR2	3728	3729
HOLMES	7208	7209	--	C7R20

SEE SHEET 5 FOR "CANYON RIDGE MODERN SERIES" MODELS.

SHEET: 1 OF 5

REVISIONS					DESCRIPTION
REV. NO.	ZONE	DATE	ECN NO.	APPVD:	
00	-	9/13/21	-	JDW	REVISED FOR RELEASE.

MIXED GLAZING SHOWN.

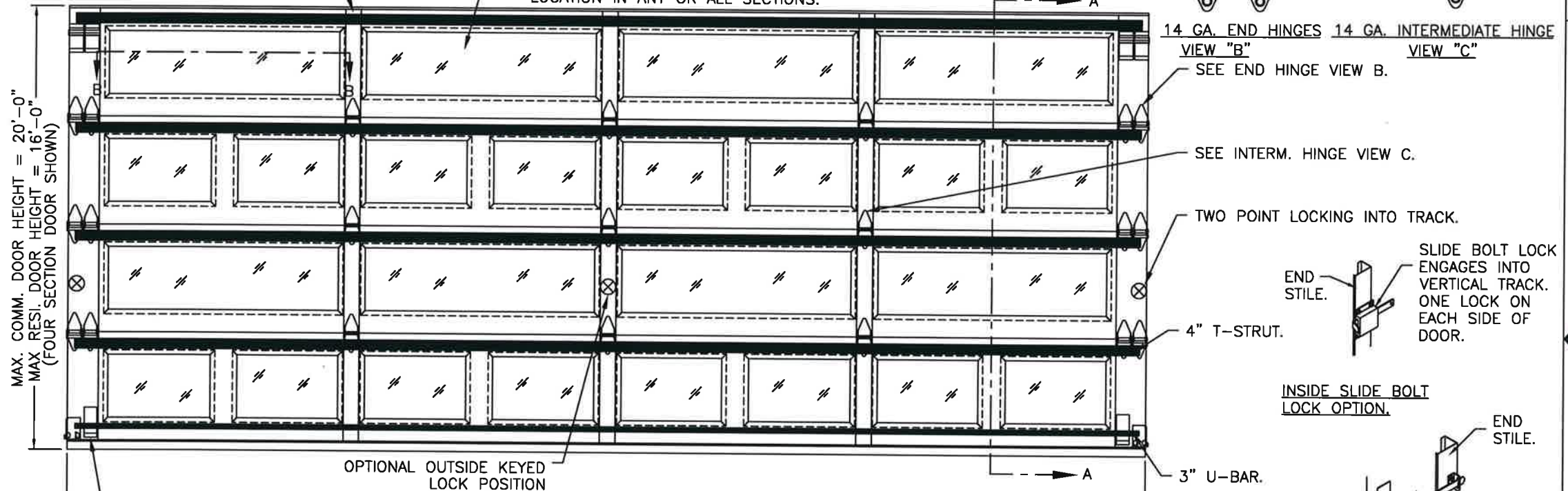
(1) 20 GA. BACKER EXTERNAL PLATE AT EACH INTERMEDIATE HINGE LOCATION, ATTACHED WITH DOUBLE SIDED ACRYLIC ADHESIVE TO BACK OF DOOR.

OPTIONAL GLAZING MAY BE IMPACT RESISTANT (SEE DETAIL A ON SHEET 2) OR STANDARD (SEE DETAIL B ON SHEET 2). MAXIMUM GLAZING SIZE (DLO) IS 39-1/4"x13-1/4". GLAZING MAY BE SHORT-PANEL OR LONG-PANEL. GLAZING MAY BE INSTALLED IN ANY LOCATION IN ANY OR ALL SECTIONS.

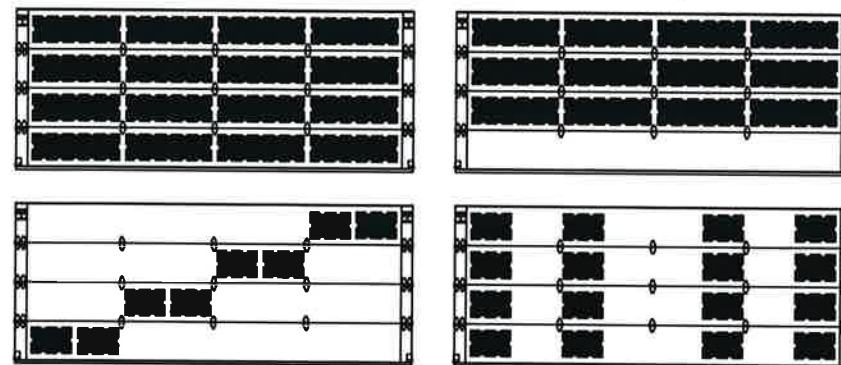
1/4"x3/4" SELF TAPPING SCREWS.

#14x5/8" SHEET METAL SCREWS

DOOR HEIGHT	# OF SECTIONS	# OF U-BARS
UP TO 6'0"	3	5
6'3" TO 8'0"	4	6
8'3" TO 10'0"	5	8
10'3" TO 12'0"	6	9
12'3" TO 14'0"	7	11
14'3" TO 16'0"	8	12
16'3" TO 18'0"	9	14
18'3" TO 20'0"	10	15
MAX SECTION HEIGHT: 24'		



REPRESENTATIVE GLAZING PATTERNS.



GLAZING MAY BE IN ANY LOCATION IN ANY OR ALL SECTIONS. THESE PATTERNS ARE REPRESENTATIVE OF THE APPROVED CONFIGURATIONS. NOT ALL CONFIGURATIONS ARE AVAILABLE AS STANDARD PRODUCT. CONSULT FACTORY FOR DETAILS.

DESIGN LOADS: +38.0 P.S.F. & -42.0 P.S.F.
TEST LOADS: +57.0 P.S.F. & -63.0 P.S.F.

Unless Stated Otherwise
TOLERANCES are
.0 = ±.031
.00 = ±.015
.000 = ±.005
.0000 = ±.001
Degrees = ±1/2°

Unless Stated Otherwise
DIMENSIONS ARE IN INCHES.

8585 Duke Boulevard
Mason, OH 45040 USA
Tel. No. 513-770-4800
Fax No. 513-770-4853

<p>THIS PRODUCT COMPLIES WITH THE 2018 IBC/IRC.</p>			
MANUFACTURING PRODUCT CODE			
DSIUA-1F477			
PART NO.: N/A			
WINDLOAD RATING			
W6 DP38T			
DESCRIPTION: MODERN STEEL 2" INTELICORE +38/-42 PSF TO 16' W			
DRAWN BY: JDW	DATE: 09/2021	SCALE: NTS	DWG. SIZE B
CHECKED BY: --	DATE: --	SHEET 1 OF 5	
DWG. NO.: 105042 - A/B		VER: TDI	

DESIGN ENGINEER
MARK WESTERFIELD, P.E.
FLORIDA P.E. #48495, NC P.E. #23832, TEXAS P.E. #91513

BRAND	MODERN STEEL		COMMERCIAL DOORS	
	FLUSH	GROOVED	FLUSH	GROOVED
CLOPAY	9208, HDPC2	9209, HDPCR2	3728	3729
HOLMES	7208	7209	--	C7R20

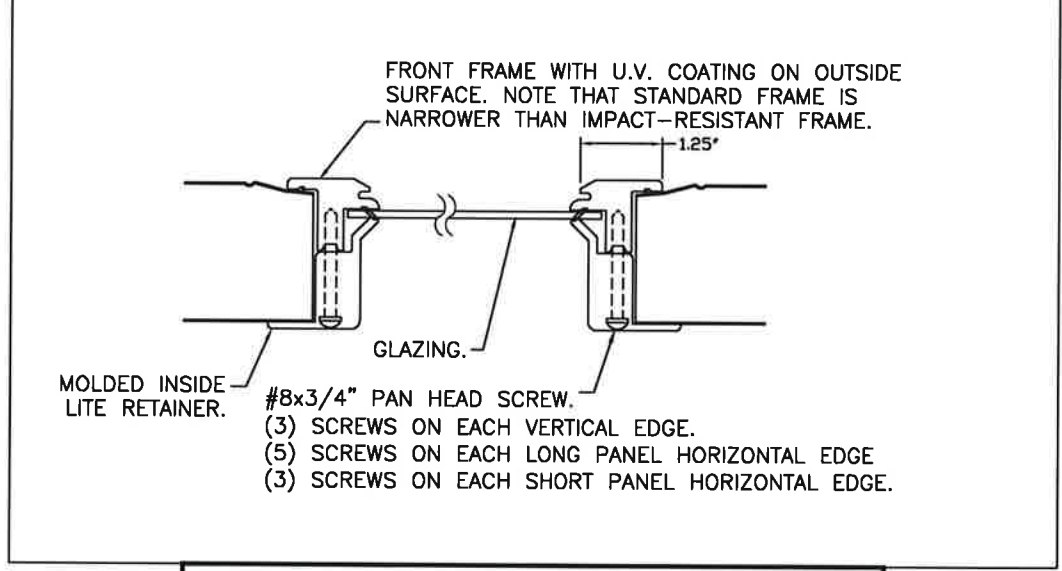
SEE SHEET 5 FOR "CANYON RIDGE MODERN SERIES" MODELS.

SHEET:
2 OF 5

REVISIONS					
REV. NO.	ZONE	DATE	ECN NO.	APPVD	DESCRIPTION
00	-	-	-	-	SEE REVISION HISTORY ON SHEET ONE.

STANDARD ASSEMBLY CONSTRUCTION:
 OPTIONAL DSB OR 1/8" ACRYLIC LITES AVAILABLE. OPTIONAL ACRYLIC GLAZING IS PLASKOLITE OPTIX OR LUCITE CP APPROVED CC2 PLASTIC IN ACCORDANCE WITH IBC/FBC 2606.
 THE ENTIRE DOOR ASSEMBLY INSTALLED IN COMPLIANCE WITH THIS SECTION MEETS THE WIND LOAD REQUIREMENTS OF THE FLORIDA BUILDING CODE OR INTERNATIONAL BUILDING CODE BUT DOES NOT MEET THE IMPACT RESISTANT REQUIREMENT FOR WINDBORNE DEBRIS REGIONS (REF. CHAPTER 16 FBC/IBC).

SECTION B-B (NON-IMPACT RESISTANT GLAZING OPTION)



**STANDARD ASSEMBLY DETAILS
DETAIL B**

D
C
B
A

D
C
B
A



DESIGN ENGINEER
 MARK WESTERFIELD, P.E.
 FLORIDA P.E. #48495, NC P.E. #23832, TEXAS P.E. #91513

DESIGN LOADS: +38.0 P.S.F. & -42.0 P.S.F.
 TEST LOADS: +57.0 P.S.F. & -63.0 P.S.F.

Unless Stated Otherwise
 TOLERANCES are
 .0 = ±.031
 .00 = ±.015
 .000 = ±.005
 .0000 = ±.001
 Degrees = ±1/2'
 Unless Stated Otherwise
 DIMENSIONS ARE IN INCHES.

Clopay
 CORPORATION
 8585 Duke Boulevard
 Mason, OH 45040 USA
 Tel. No. 513-770-4800
 Fax No. 513-770-4853

MANUFACTURING PRODUCT CODE
 DSIUA-1F477

PART NO.: N/A

WINDLOAD RATING
W6 DP38T

DESCRIPTION: MODERN STEEL 2" INTELICORE +38/-42 PSF TO 16' W			
DRAWN BY: JDW	DATE: 09/2021	SCALE: NTS	DWG. B
CHECKED BY: --	DATE: --	SHEET 2 OF 5	SIZE B
DWG. NO.: 105042 - A/B		VER: TDI	

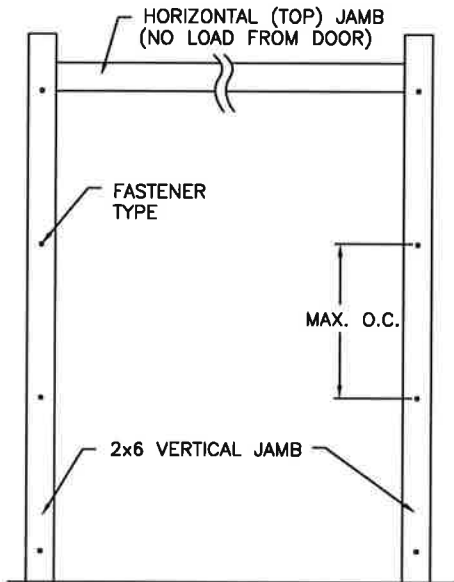
4 3 2 1

BRAND	MODERN STEEL		COMMERCIAL DOORS	
	FLUSH	GROOVED	FLUSH	GROOVED
CLOPAY	9208, HDPC2	9209, HDPCR2	3728	3729
HOLMES	7208	7209	--	C7R20

SEE SHEET 5 FOR "CANYON RIDGE MODERN SERIES" MODELS.

SHEET:
3 OF 5

REVISIONS					DESCRIPTION
REV. NO.	ZONE	DATE	ECN NO.	APPVD.	
00	-	-	-	-	SEE REVISION HISTORY ON SHEET ONE.



JAMB TO SUPPORTING STRUCTURE ATTACHMENT

NOTES:

1. ALL THE LOAD FROM THE DOOR IS TRANSFERRED TO THE TRACK AND THEN FROM THE TRACK TO THE 2x6 VERTICAL SYP (GRADE #2 OR BETTER) JAMBS. NO LOAD FROM THE DOOR IS TRANSFERRED TO THE HORIZONTAL (TOP) JAMB.
2. EACH VERTICAL JAMB SEES A MAXIMUM DESIGN LOAD OF +304 LB & -336 LB. PER LINEAR FOOT OF JAMB.
3. ALL JAMB FASTENERS MAY BE (BUT ARE NOT REQUIRED TO BE) COUNTERSUNK TO PROVIDE A FLUSH MOUNTING SURFACE.
4. A 1/3 STRESS INCREASE FOR WIND LOAD WAS NOT USED IN THE CALCULATION OF ALLOWABLE LOADS FOR ANCHORS AND FASTENERS FOR STEEL, CONCRETE AND MASONRY.

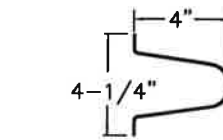
NOTE: 2x6 WOOD JAMBS ARE NOT REQUIRED WITH CONTINUOUS ANGLE MOUNT TRACK. HOWEVER, IF DESIRED ON STEEL JAMBS OR CONCRETE OR BLOCK WALLS, APPROVED FASTENERS AS DETAILED BELOW SHOULD BE INCREASED IN LENGTH BY 1-1/2" AND INSTALLED DIRECTLY THROUGH THE ANGLE AND 2x6 WOOD JAMBS INTO THE STEEL JAMBS OR CONCRETE OR BLOCK WALLS. ANCHORS CAN BE (BUT ARE NOT REQUIRED TO BE) COUNTERSUNK TO PROVIDE A FLUSH MOUNTING SURFACE. CONTINUOUS ANGLE TRACK CAN BE ANCHORED DIRECTLY TO GROUT REINFORCED BLOCK WALL OR 3,000 PSI MIN. CONCRETE COLUMN OR STEEL JAMBS.

2x6 JAMB TO SUPPORTING STRUCTURE ATTACHMENT
(NOT TO BE USED FOR ATTACHMENT OF TRACK ANGLE TO 2x6 VERTICAL JAMBS)

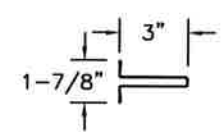
BUILDING TYPE	FASTENER TYPE	MAXIMUM ON-CENTER DISTANCE BETWEEN FASTENERS*	STEEL WASHERS REQUIRED
HOLLOW CMU BLOCK WALL	1/4" x 1-1/4" MIN. EMBED ULTRACON CONCRETE ANCHOR	5 1/2"	1" O.D.
GROUT-FILLED CMU BLOCK	1/4" x 1-1/4" MIN. EMBED ULTRACON CONCRETE ANCHOR	9"	1" O.D.
2000 PSI MIN. CONCRETE	1/4" x 1" MIN. EMBED ULTRACON CONCRETE ANCHOR	7 3/4"	1" O.D.
2000 PSI MIN. CONCRETE	1/4" x 1" MIN. EMBED TAPCON CONCRETE ANCHOR	7 1/4"	1" O.D.
2000 PSI MIN. CONCRETE	3/8" X 1-3/4" MIN. EMBED WEJ-IT ANKR TITE SLEEVE ANCHOR	16 1/2"	INCLUDED
4000 PSI MIN. CONCRETE	3/8" X 1-3/4" MIN. EMBED WEJ-IT ANKR TITE SLEEVE ANCHOR	24"	INCLUDED
WOOD FRAME (SYP 0.55 SG)	1/2" x 3" LAG SCREW (ASTM A307, GRADE A) 1-5/8" EMBED INTO STRUCTURE	17 3/4"	1" O.D.
14GA STEEL (0.060" MIN.)	1/4"-14 x 1" ITW BUILDDEX TEKS SELF-DRILLING FASTENER	7 1/2"	1" O.D.
12GA STEEL (0.105" MIN.)	1/4"-14 x 1" ITW BUILDDEX TEKS SELF-DRILLING FASTENER	13"	1" O.D.
1/8" STEEL	1/4"-14 x 1" ITW BUILDDEX TEKS SELF-DRILLING FASTENER	15 1/2"	1" O.D.

* FIRST (BOTTOM) ANCHOR STARTING AT NO MORE THAN HALF OF THE MAXIMUM ON-CENTER DISTANCE. HIGHEST ANCHOR INSTALLED AT LEAST AS HIGH AS THE DOOR OPENING. CLOPAY DOES NOT SUPPLY JAMB ATTACHMENT FASTENERS. MINIMUM DISTANCE BETWEEN CENTER OF ANCHOR AND EDGE OF CONCRETE: 2-1/2", EXCLUDING STUCCO THICKNESS. EXCEPTION FOR TAPCON -- MINIMUM EDGE DISTANCE FOR TAPCON FASTENER IS 1-1/4", EXCLUDING STUCCO THICKNESS.

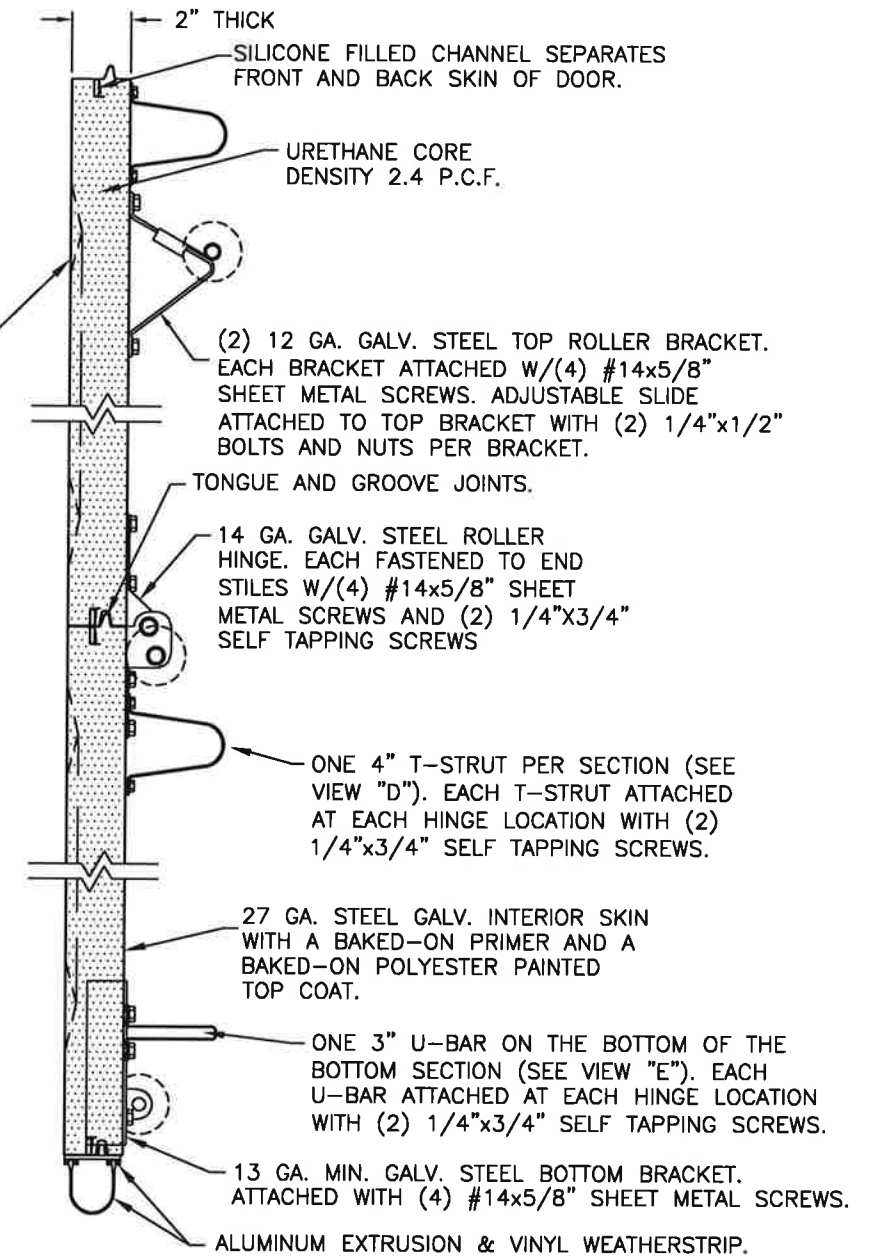
OTHER JAMB CONFIGURATIONS: REFER TO DASMA TDS-161. A LICENSED DESIGN PROFESSIONAL MAY ALSO BE EMPLOYED TO APPROVE ALTERNATE FASTENERS AND/OR JAMB CONFIGURATIONS.



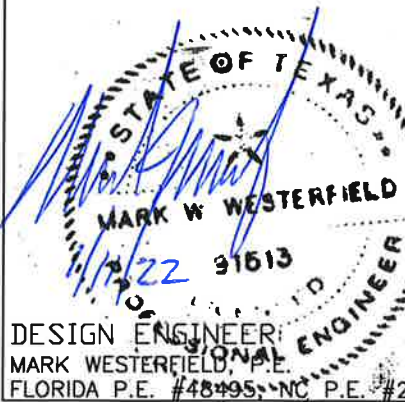
VIEW "D"
4" TALL TAPER STRUT.
0.062" MIN. GALV. STEEL,
80 KSI MIN.



VIEW "E"
3" TALL U-BAR.
20 GA. MIN. GALV. STEEL,
80 KSI MIN.



SECTION A-A (SIDE VIEW)



DESIGN LOADS: +38.0 P.S.F. & -42.0 P.S.F.
TEST LOADS: +57.0 P.S.F. & -63.0 P.S.F.

Unless Stated Otherwise
TOLERANCES are
.0 = ±.031
.00 = ±.015
.000 = ±.005
.0000 = ±.001
Degrees = ±1/2"

Glopay CORPORATION
8585 Duke Boulevard
Mason, OH 45040 USA
Tel. No. 513-770-4800
Fax No. 513-770-4853

MANUFACTURING PRODUCT CODE
DSIUA-1F477

PART NO.: N/A

WINDLOAD RATING
W6 DP38T

DESCRIPTION: MODERN STEEL 2" INTELICORE +38/-42 PSF TO 16' W

DRAWN BY: JDW DATE: 09/2021 SCALE: NTS DWG. B
CHECKED BY: -- DATE: -- SHEET 3 OF 5 SIZE B

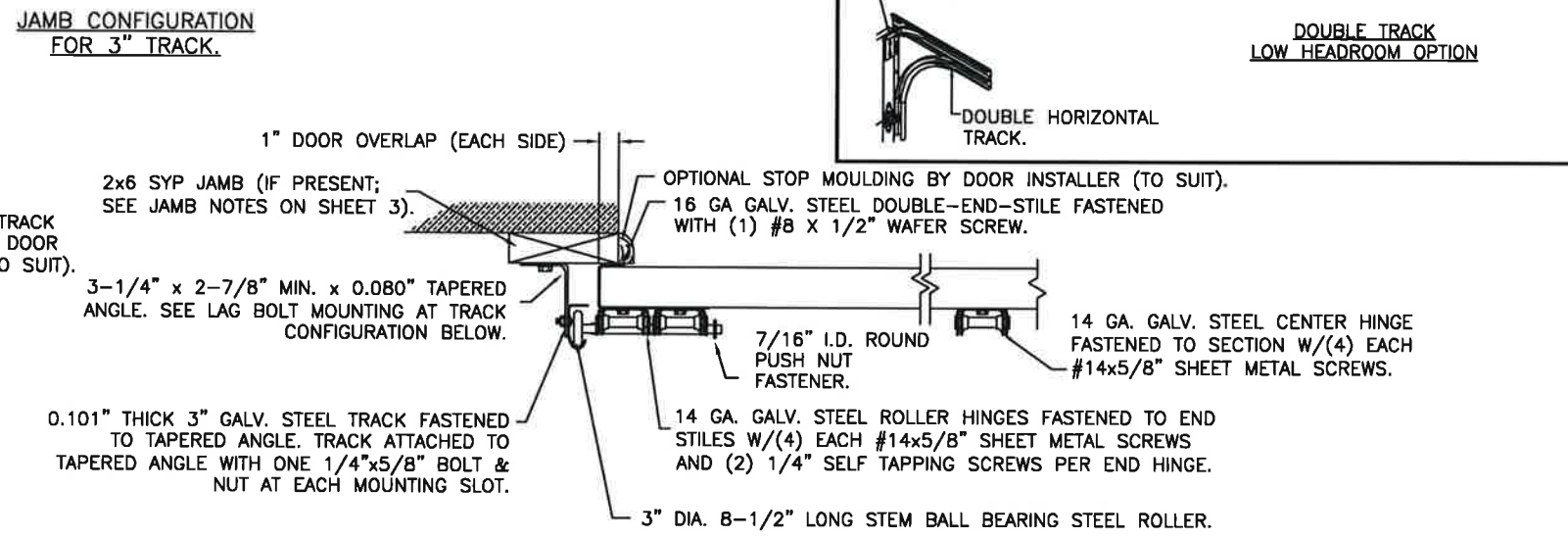
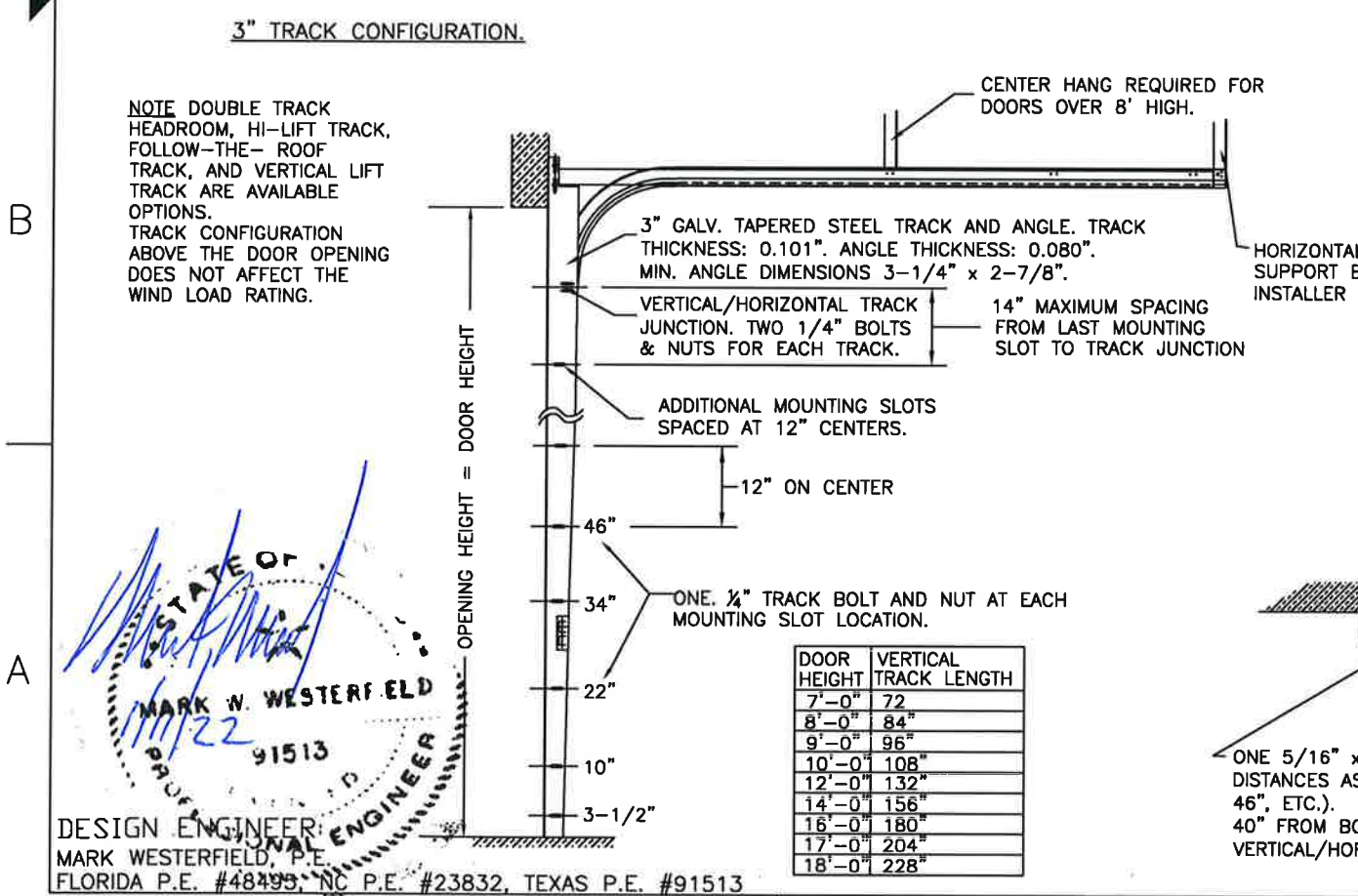
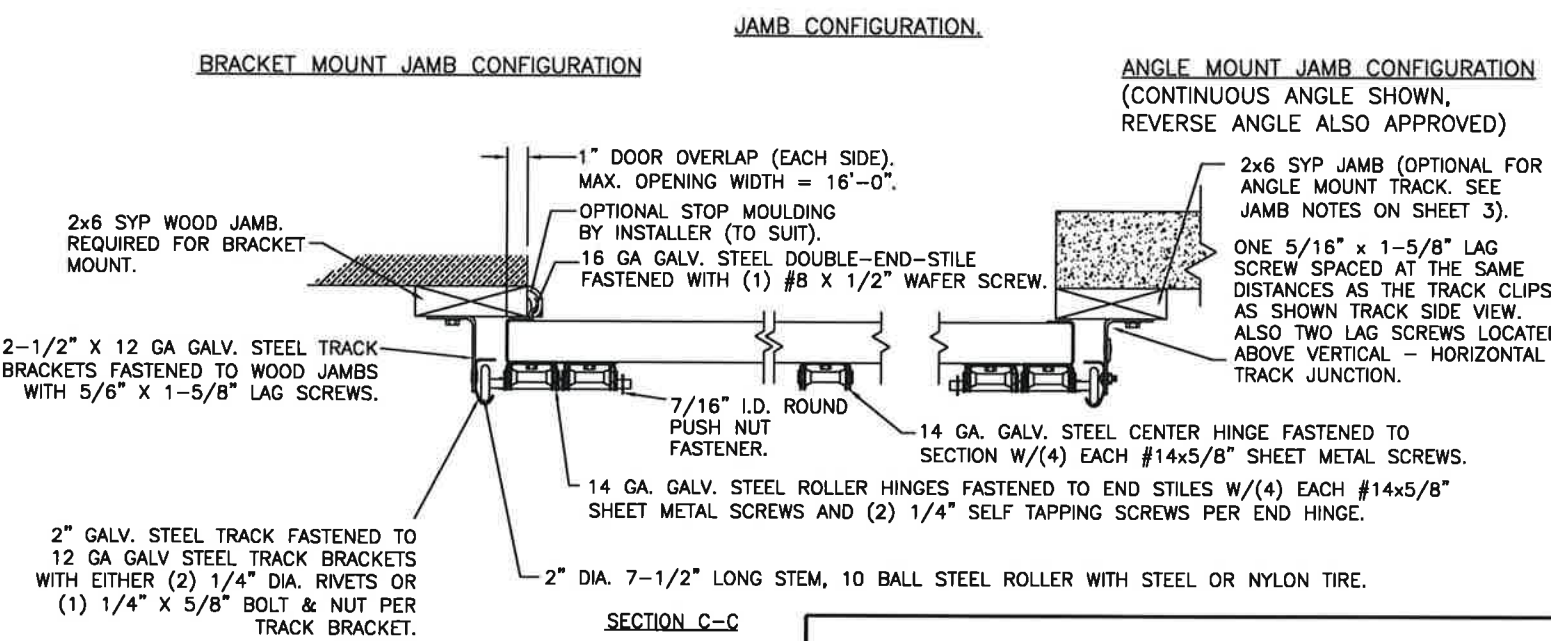
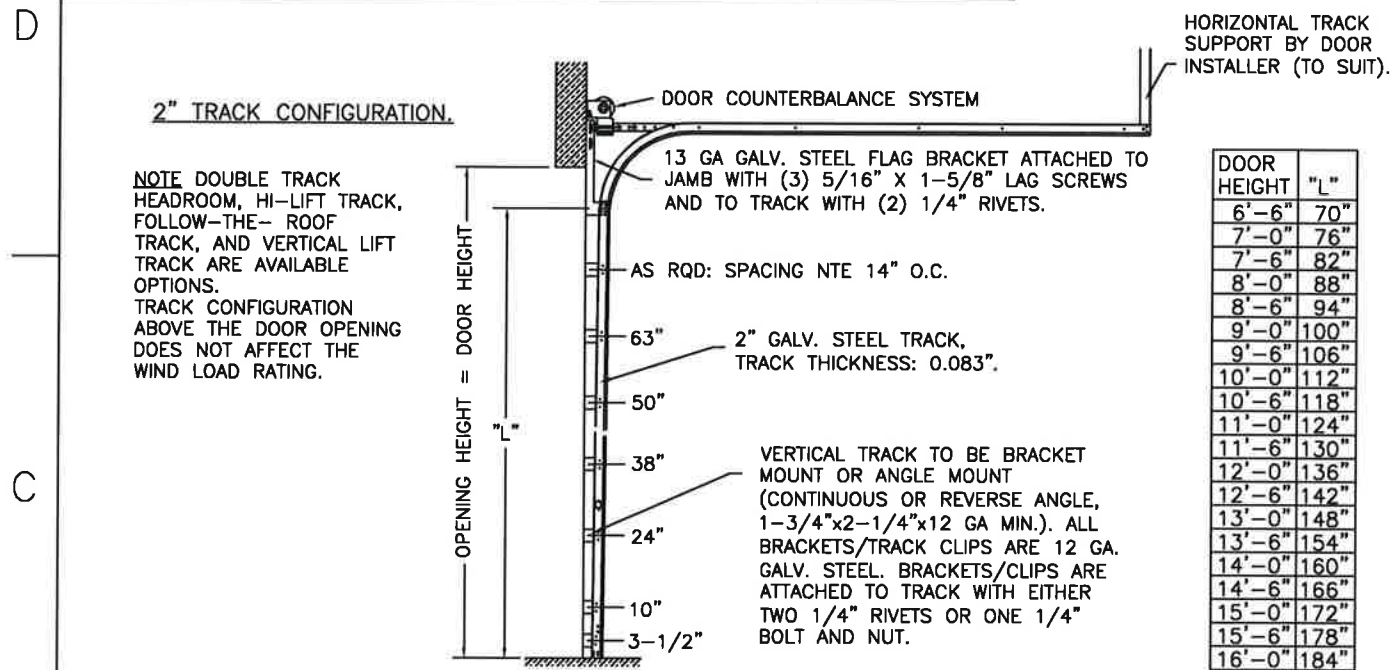
DWG. NO.: 105042 - A/B VER: TDI

BRAND	MODERN STEEL		COMMERCIAL DOORS	
	FLUSH	GROOVED	FLUSH	GROOVED
CLOPAY	9208, HDPC2	9209, HDPCR2	3728	3729
HOLMES	7208	7209	--	C7R20

SEE SHEET 5 FOR "CANYON RIDGE MODERN SERIES" MODELS.

SHEET:
4 OF 5

REVISIONS					DESCRIPTION
REV. NO.	ZONE	DATE	ECN NO.	APPVD:	
00	-	-	-	-	SEE REVISION HISTORY ON SHEET ONE.



STATE OF FLORIDA
MARK W. WESTERFIELD
 91513
 PROFESSIONAL ENGINEER
 DESIGN ENGINEER
 MARK WESTERFIELD, P.E.
 FLORIDA P.E. #48495, NC P.E. #23832, TEXAS P.E. #91513

DESIGN LOADS: +38.0 P.S.F. & -42.0 P.S.F.
 TEST LOADS: +57.0 P.S.F. & -63.0 P.S.F.

Unless Stated Otherwise
TOLERANCES are
 .0 = ±.031
 .00 = ±.015
 .000 = ±.005
 .0000 = ±.001
 Degrees = ±1/2°
 Unless Stated Otherwise
 DIMENSIONS ARE IN INCHES.

Glopay CORPORATION
 8585 Duke Boulevard
 Mason, OH 45040 USA
 Tel. No. 513-770-4800
 Fax No. 513-770-4853

MANUFACTURING PRODUCT CODE
 DSIUA-1F477

PART NO.: N/A

WINDLOAD RATING
W6 DP38T

DESCRIPTION: MODERN STEEL 2" INTELICORE +38/-42 PSF TO 16' W
 DRAWN BY: JDW DATE: 09/2021 SCALE: NTS DWG. B
 CHECKED BY: -- DATE: -- SHEET 4 OF 5
 DWG. NO.: 105042 - A/B VER: TDI

CLOPAY 'CANYON RIDGE MODERN SERIES': CRM2nnn

HOLMES 'GLENMOOR MODERN SERIES': GLM2nnn

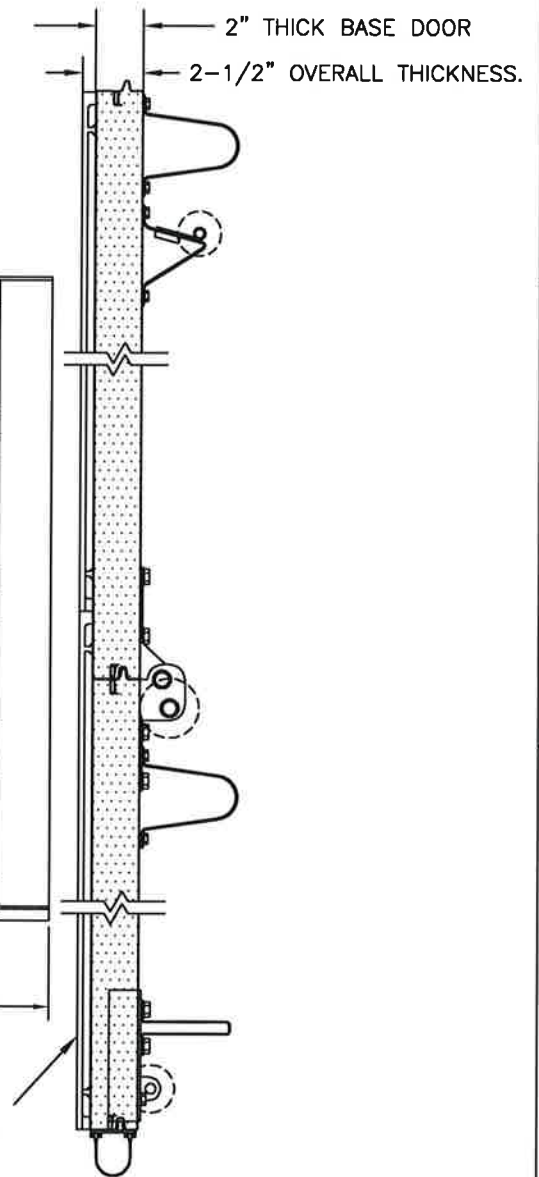
IDEAL 'CUSTOM CRAFTED MODERN WOOD-LOOK' SERIES: WLM2nnn

NOTE: "nnn" REPRESENTS THE ARRANGEMENT OF THE DECORATIVE OVERLAYS. DOORS MAY HAVE 'PLANK' APPEARANCE, ALUMINUM INLAYS, OR "FULL VISION".

SHEET:		REVISIONS					
5 OF 5		REV. NO.	ZONE:	DATE:	ECN NO.	APPVD:	DESCRIPTION
		00	-	-	-	-	SEE REVISION HISTORY ON SHEET ONE.

FULL VISION GLAZING SHOWN.

OPTIONAL GLAZING MAY BE IMPACT RESISTANT (SEE DETAIL A ON SHEET 2) OR STANDARD (SEE DETAIL B ON SHEET 2). MAXIMUM GLAZING SIZE (DLO) IS 39-1/4"x13-1/4". GLAZING MAY BE SHORT-PANEL OR LONG-PANEL. GLAZING MAY BE INSTALLED IN ANY LOCATION IN ANY OR ALL SECTIONS.

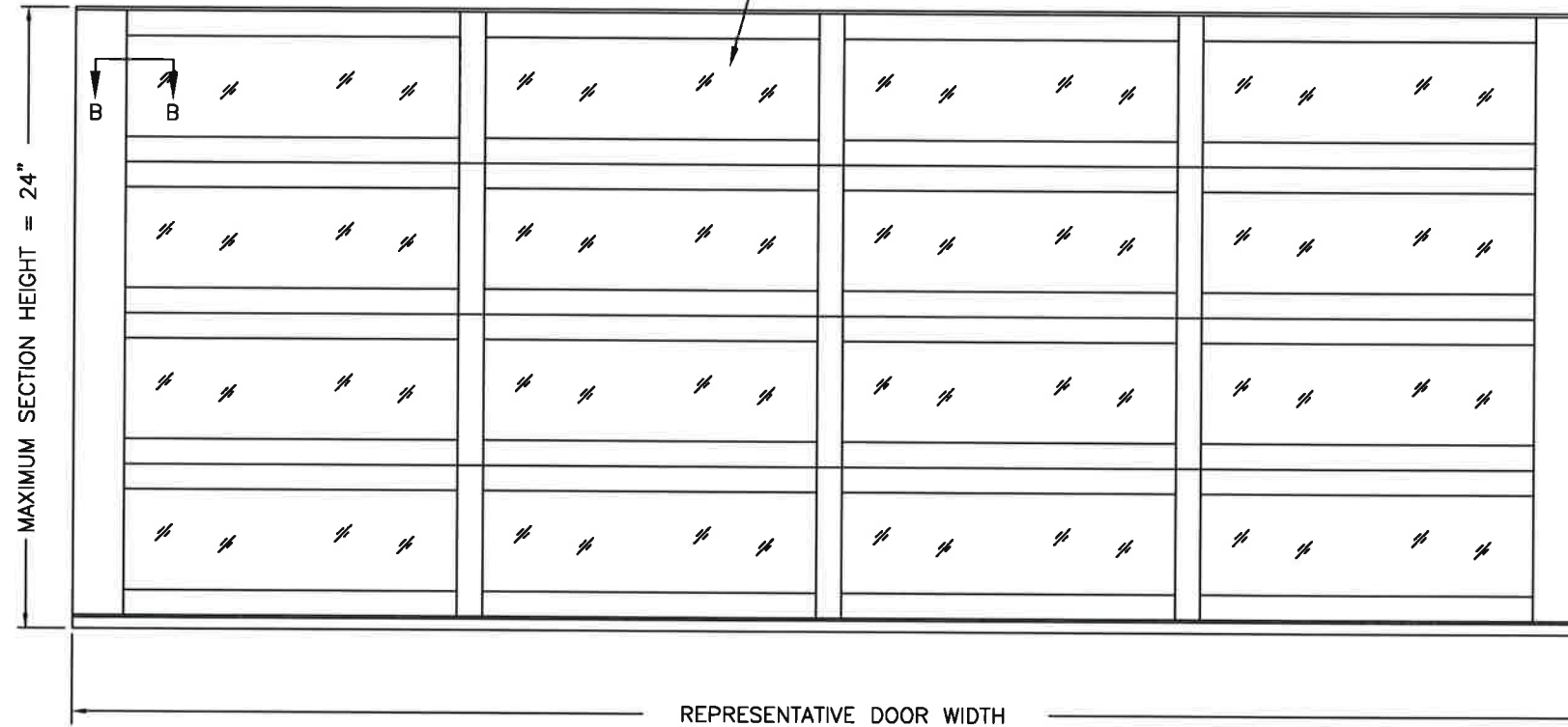


SECTION A-A (SIDE VIEW)

SECTION B-B



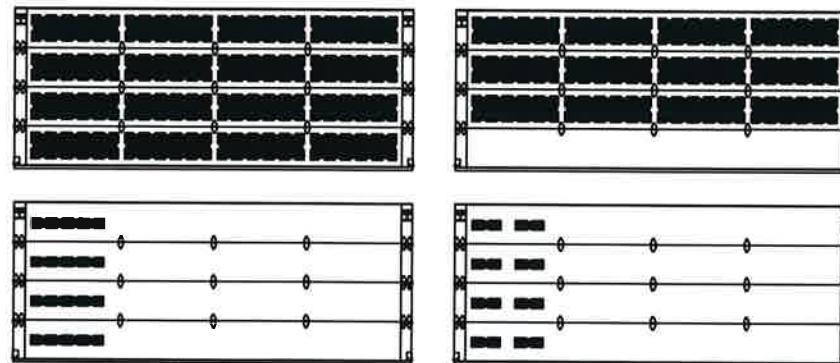
NOTE: "CANYON RIDGE" TYPE IMPACT RESISTANT GLAZING SHOWN WITH DECORATIVE OVERLAY. STANDARD GLAZING ALSO AVAILABLE. DETAILS ARE OTHERWISE STRUCTURALLY EQUIVALENT TO DETAIL A OR DETAIL B ON SHEET 2 OF THIS DRAWING.



REPRESENTATIVE DOOR WIDTH

CANYON-RIDGE TYPE MODERN SERIES: HIGH DENSITY MOLDED COMPOSITE CLADDING OR OVERLAYS ADHERED TO OUTSIDE SKIN WITH PERMANENT ADHESIVE.

REPRESENTATIVE GLAZING PATTERNS.



GLAZING MAY BE IN ANY LOCATION IN ANY OR ALL SECTIONS. THESE PATTERNS ARE REPRESENTATIVE OF THE APPROVED CONFIGURATIONS. NOT ALL CONFIGURATIONS ARE AVAILABLE AS STANDARD PRODUCT. CONSULT FACTORY FOR DETAILS.

"CANYON RIDGE" TYPE OVERLAY DOORS

- NOTES:
- "CANYON RIDGE" TYPE DOORS USE THE SAME REINFORCEMENTS AND BASE SECTION CONSTRUCTION AND TRACK CONFIGURATION DESCRIBED ON SHEETS 1-4 OF THIS DRAWING.
 - "CANYON RIDGE" TYPE DOORS ARE IMPACT RESISTANT AS SOLID OR WITH IMPACT RESISTANT GLAZING AND FRAME AS SHOWN IN DETAIL B-B ABOVE.

DESIGN ENGINEER:
 MARK WESTERFIELD, P.E.
 FLORIDA P.E. #48495, NC P.E. #23832, TEXAS P.E. #91513

DESIGN LOADS: +38.0 P.S.F. & -42.0 P.S.F.
TEST LOADS: +57.0 P.S.F. & -63.0 P.S.F.

Unless Stated Otherwise
 TOLERANCES are
 .0 = ±.031
 .00 = ±.015
 .000 = ±.005
 .0000 = ±.001
 Degrees = ±1/2°

Unless Stated Otherwise DIMENSIONS ARE IN INCHES.

Glopay CORPORATION
 8585 Duke Boulevard
 Mason, OH 45040 USA
 Tel. No. 513-770-4800
 Fax No. 513-770-4853

DESCRIPTION: MODERN STEEL 2" INTELICORE +38/-42 PSF TO 16' W		WINDLOAD RATING W6 DP38T	
DRAWN BY: JDW	DATE: 09/2021	SCALE: NTS	DWG. B
CHECKED BY: --	DATE: --	SHEET 5 OF 5	SIZE B
DWG. NO.: 105042 - A/B		VER: TDI	

MANUFACTURING PRODUCT CODE DSIUD-1K479
PART NO.: N/A