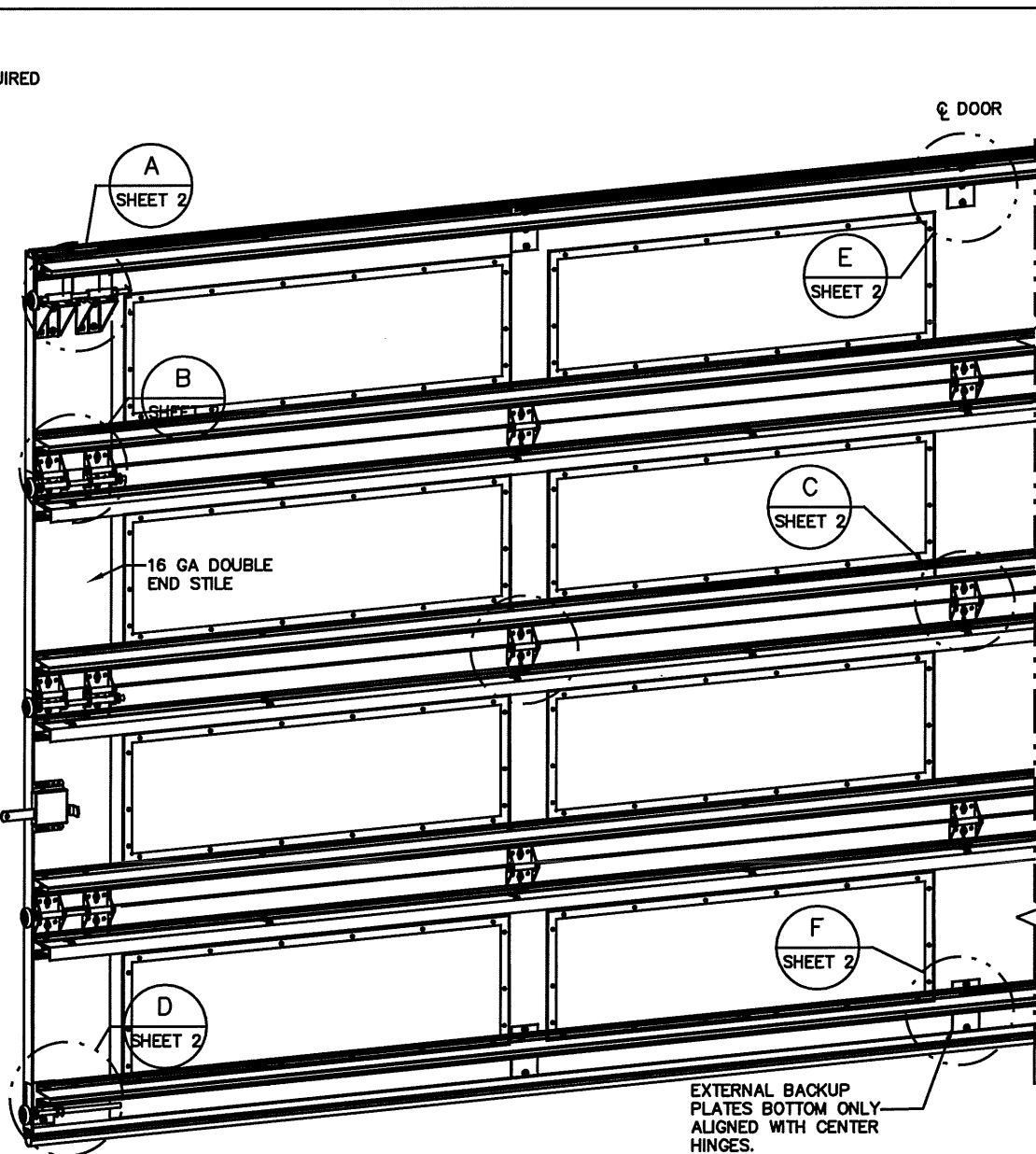
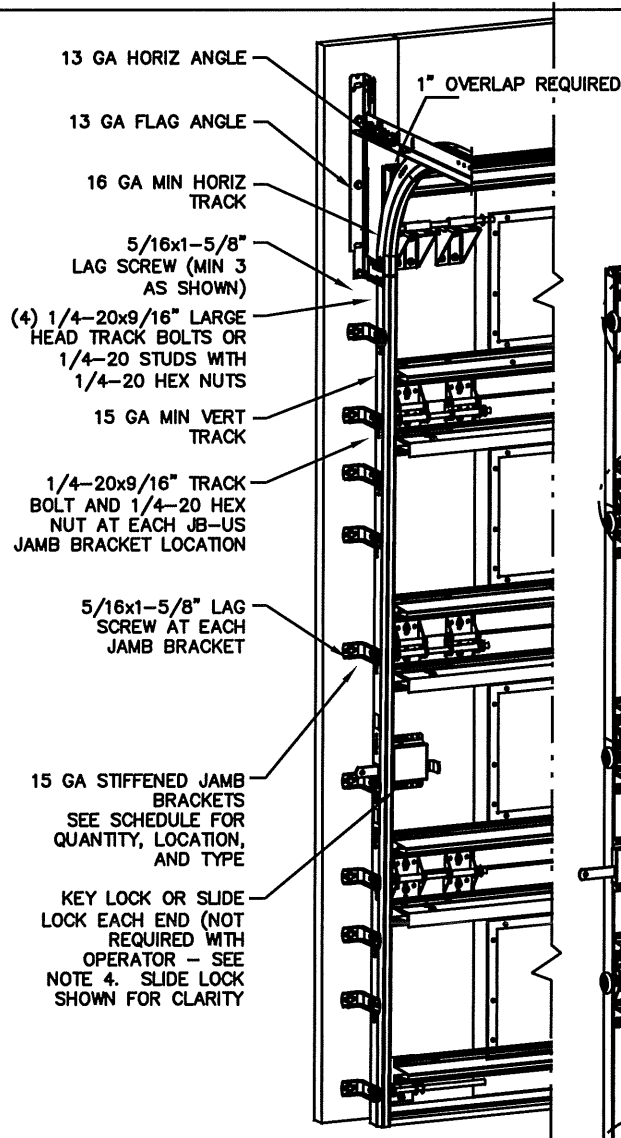


NOTES:

1. IMPACT RESISTANT GLAZING OPTION - IMPACT RESISTANT GLAZING SYSTEM MAY BE INSTALLED IN ANY OR ALL SECTIONS. GLAZING SHALL BE 1/4" GROOVED POLYCARBONATE. ALUMINUM FRAMES ASSEMBLED WITH (16) SCREWS. MAXIMUM CLEAR OPENING OF 40" X 12-3/4", FASTENED WITH A MINIMUM #8 X 1" SMS: 6X ALONG THE HORIZONTAL AND 3X ALONG THE VERTICAL. SEE DETAIL I ON SHEET 3 FOR ASSEMBLY DETAILS.
2. NON-IMPACT RESISTANT GLAZING OPTION - 3/32" MINIMUM SSB GLAZING IN MOLDED FRAMES SCREWED TOGETHER WITH A MINIMUM OF (14) #8x1" SCREWS (2X ALONG THE HORIZONTAL AND 5X ALONG THE VERTICAL) INSTALLED IN ANY OR ALL SECTIONS MEETS UNIFORM STATIC WIND PRESSURES SHOWN ON THIS DRAWING. MAXIMUM GLAZING DIMENSIONS SHALL BE 38.5" X 13" CUTOUT. GLASS IS NOT IMPACT RESISTANT AND DOES NOT MEET THE REQUIREMENTS FOR WIND-BORNE DEBRIS REGIONS. SEE DETAIL G, H ON SHEET 3 FOR ASSEMBLY DETAILS. ALTERNATE OPTION- 1/2" DSB ANNEALED GLAZING IN ALUMINUM EXTERIOR FRAME/PLASTIC MOLDED INTERIOR FRAME SCREWED TOGETHER WITH A MINIMUM OF (14) #8x1" SCREWS (2X ALONG THE HORIZONTAL AND 5X ALONG THE HORIZONTAL) INSTALLED IN ANY OR ALL SECTIONS MEETS UNIFORM STATIC WIND PRESSURES SHOWN ON THIS DRAWING. MAXIMUM GLAZING DIMENSIONS SHALL BE 39" X 5-1/6" CUTOUT. GLASS IS NOT IMPACT RESISTANT AND DOES NOT MEET THE REQUIREMENTS FOR WIND-BORNE DEBRIS REGIONS. DLO = 4"X37.8".
3. KEY LOCK, SLIDE LOCK, OR OPERATOR REQUIRED.
4. FACER STEEL TO HAVE A MINIMUM 29 GA THICKNESS AND BACKER STEEL TO HAVE A MINIMUM 29 GA THICKNESS.
5. EACH SECTION HAS AN INTERNAL 1" WIDE X 20 GA CONTINUOUS STEEL STRIP AT THE TOP AND BOTTOM OF THE SECTION.
6. DOOR JAMB TO BE MINIMUM 2x6 SOUTHERN PINE LUMBER. REFER TO JAMB CONNECTION SUPPLEMENT FOR ATTACHMENT TO SUPPORTING STRUCTURE.
7. FOR LOW HEAD ROOM LIFT CONDITIONS, TOP BRACKET SHALL BE A 13 GA LHR 7/4 TOP BRACKET WITHOUT PUSHNUTS AND WITH A MINIMUM OF (3) 1/4-14x7/8" SELF DRILLING CRIMP TITE SCREWS IN LIEU OF THE BRACKET SHOWN ON THIS DRAWING. U-BAR ON TOP SECTION SHALL BE INSTALLED ON TOP OF LHR TOP BRACKETS.
8. MINIMUM 1" OVERLAP ON BOTH JAMBS REQUIRED TO MEET NEGATIVE DESIGN PRESSURES.
9. COMPLIES WITH THE REQUIREMENTS OF IBC/IRC 2018.



REVISIONS
- RELEASE DRAWING SW 3/23/2021

SUPERIMPOSED DESIGN PRESSURE LOADS ON SUPPORTING STRUCTURE		
DOOR WIDTH	DOOR HEIGHT	UNIFORM LOAD EACH JAMB (PLF)
17'-2"	ALL	+315.9/-357.1
18'-2"	ALL	+334.3/-377.9

JAMB BRACKET SCHEDULE			
DOOR HEIGHT	NO. OF SECTIONS	NO. OF JAMB BRACKETS (EACH JAMB)	LOCATION OF CENTERLINE OF JAMB BRACKETS MEASURED FROM BOTTOM OF TRACK (ALL DIMENSIONS ± 2")
6'-6"	4	9	2", 10", 16", 21-3/4", 29-3/4", 42", 48", 55", 63-3/4"
7'-0"	4	9	2", 10", 16", 21-3/4", 29-3/4", 42", 48", 55", 63-3/4"
7'-6"	4 OR 5	11	2", 10", 16", 21-3/4", 29-3/4", 40", 48", 57-1/4", 66", 71", 75-1/2"
8'-0"	4 OR 5	11	2", 10", 16", 21-3/4", 29-3/4", 40", 48", 57-1/4", 66", 71", 75-1/2"
> 8'-0"			SEE NOTE BELOW

NOTE:
 (JB-US) FOLLOWING DIMENSION DENOTES SLOTTED JAMB BRACKET ATTACHED TO TRACK WITH 1/4-20x9/16" TRACK BOLT AND NUT AS SHOWN ABOVE.
 ALL DOORS GREATER THAN 8' IN HEIGHT REQUIRE USE OF CONTINUOUS WALL ANGLE. SEE SUPPLEMENT TRACK CHART FOR DETAILS.

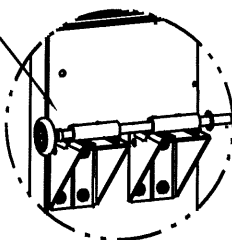
DWAYNE J. KORNISH, PE
 4578 COUNTY ROAD 160
 MOUNT HOPE, OHIO
 FL PE 77845
 TX PE 117868

PROFESSIONAL ENGINEER'S SEAL PROVIDED ONLY FOR VERIFICATION OF WINDLOAD CONSTRUCTION DETAILS.

The Genuine. The Original. A DIVISION OF OVERHEAD DOOR CORP 3395 ADDISON DRIVE PENSACOLA, FLORIDA 32514 (850) 474-9890	STATIC PRESSURE RATINGS DESIGN (PSF): +36.80/-41.60 TEST (PSF): +55.20/-62.40 IMPACT/CYCLIC RATED (YES/NO): YES	APPROVED SIZES MAX WIDTH: 18'-2" MAX HEIGHT: 24'-0" MAX SECTION HEIGHT: 24"	SCALE: N.T.S. DATE: 03/23/21 CHECKED:	SIZE: A NAME: SW
	MODELS 5740/5760/190/490/7560/591-596/599		SHEET 1 OF 3	
	WINDLOAD SPECIFICATION OPTION CODE 2618		DRAWING PART NO. 411838	
			REV. -	

REVISIONS

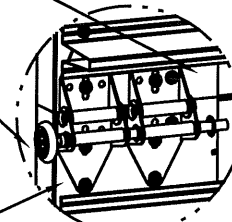
(2) 12 GA COMMERCIAL TOP FRAME BRACKETS WITH 13 GA ROLLER CARRIERS EACH ATTACHED WITH (4) 1/4-20x3/4" SELF DRILLING SCREWS



DETAIL A

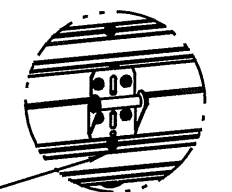
ADD (2) 1/4-20x3/4" SELF DRILLING SCREWS (INSIDE OF EACH INSIDE END HINGE)

2" STEEL ROLLER WITH 9" GRADE 1144 OR EQUIVALENT STEM AND 7/16" PUSH NUT AT EACH ROLLER LOCATION. 1/4" MAX BETWEEN PUSH NUT AND OUTER HINGE. (OPTIONAL: BALL BEARING NYLON ROLLER).



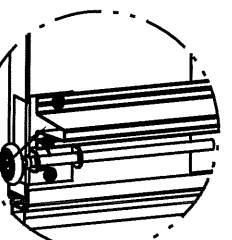
DETAIL B

(2) 13 GA WIDE BODY END HINGES EACH ATTACHED WITH (4) 1/4-20x3/4" SELF DRILLING SCREWS



DETAIL C

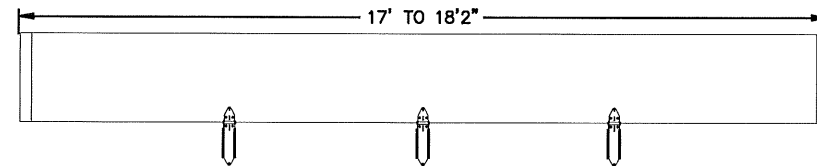
14 GA WIDE BODY EXTENDED HINGE ATTACHED WITH (7) 1/4-20x3/4" SELF DRILLING SCREWS. (2 THROUGH STRUT AND HINGE)



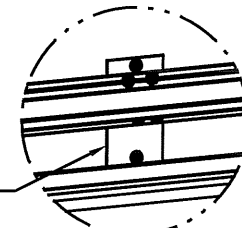
DETAIL D

14 GA BOTTOM BRACKET ATTACHED WITH (3) 1/4-20x3/4" SELF DRILLING SCREWS (2 THROUGH STRUT AND BRACKET)

HINGE & BACKER PLATE LOCATIONS

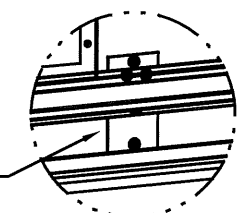


20 GA BACK PLATE ATTACHED WITH DOUBLE SIDED TAPE AND (2) 1/4-20x3/4" SELF DRILLING SCREWS AT TAPE LOCATION. UBAR ATTACHED WITH (4) 1/4-20x3/4" THROUGH STRUT AND PLATE.



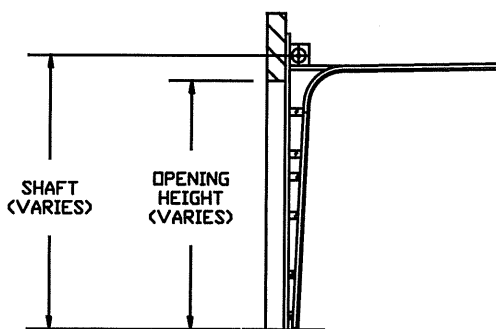
DETAIL E

20 GA BACK PLATE ATTACHED WITH DOUBLE SIDED TAPE AND (2) 1/4-20x3/4" SELF DRILLING SCREWS AT TAPE LOCATION. UBAR ATTACHED WITH (4) 1/4-20x3/4" THROUGH STRUT AND PLATE.



DETAIL F

ANGLE STRUT: 2X2X12GA ANGLE SHALL BE ATTACHED TO 3" UBAR WITH (2) 1/4-14x7/8" SELF DRILLING CRIMPITTE SCREWS AT EACH HINGE LOCATION AND BETWEEN ALL END HINGES AND INTERMEDIATE HINGES. A MINIMUM OF (18) FASTENERS ARE TO BE USED.



OPTIONAL 2-PIECE TRACK DETAIL

ALL INTERMEDIATE U-BARS SHALL BE ATTACHED WITH (2) 1/4-14x7/8" SELF DRILLING CRIMPITTE SCREWS AND ALL TOP AND BOTTOM U-BARS SHALL BE ATTACHED WITH (4) 1/4-14x7/8" SELF DRILLING CRIMPITTE SCREWS AT EACH HINGE LOCATION AND HALF WAY BETWEEN ALL HINGES. A MINIMUM OF (22) FASTENERS ARE TO BE USED.

(10) SECTION DOORS WITH (11) 3" 18 GA 80 KSI U-BARS (9) ANGLE STRUTS LOCATED AS SHOWN

(9) SECTION DOORS WITH (10) 3" 18 GA 80 KSI U-BARS (8) ANGLE STRUTS LOCATED AS SHOWN

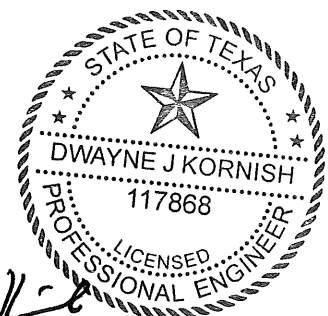
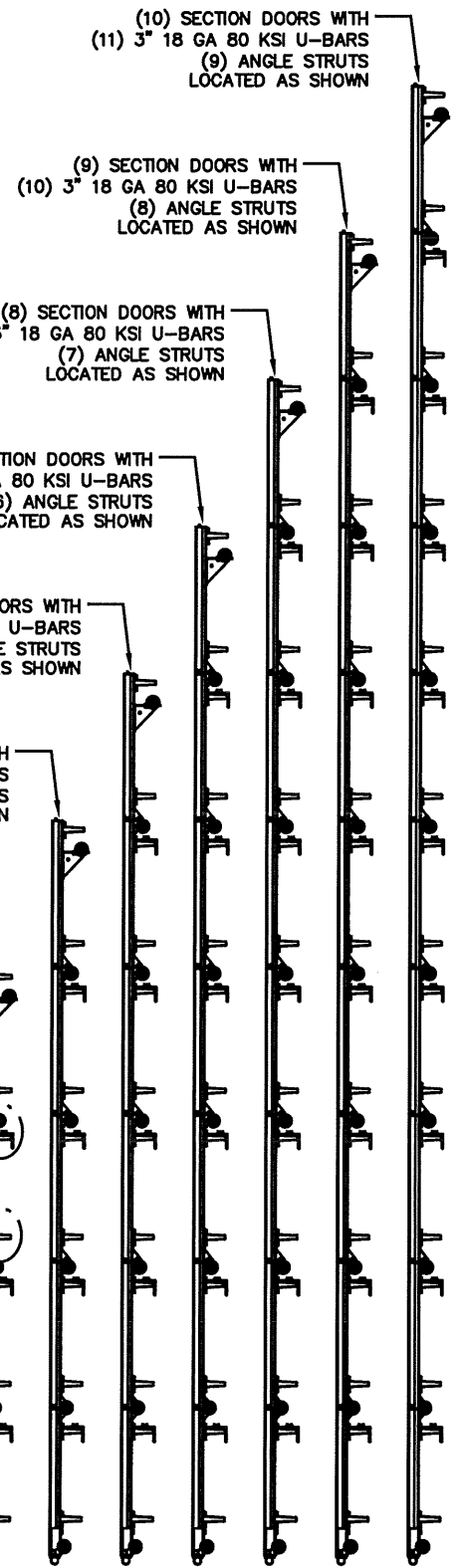
(8) SECTION DOORS WITH (9) 3" 18 GA 80 KSI U-BARS (7) ANGLE STRUTS LOCATED AS SHOWN

(7) SECTION DOORS WITH (8) 3" 18 GA 80 KSI U-BARS (6) ANGLE STRUTS LOCATED AS SHOWN

(6) SECTION DOORS WITH (7) 3" 18 GA 80 KSI U-BARS (5) ANGLE STRUTS LOCATED AS SHOWN

(5) SECTION DOORS WITH (6) 3" 18 GA 80 KSI U-BARS (4) ANGLE STRUTS LOCATED AS SHOWN

(4) SECTION DOORS WITH (5) 3" 18 GA 80 KSI U-BARS (3) ANGLE STRUTS LOCATED AS SHOWN



DWAYNE J. KORNISH, PE
4578 COUNTY ROAD 160
MOUNT HOPE, OHIO
FL PE 77845
TX PE 117868

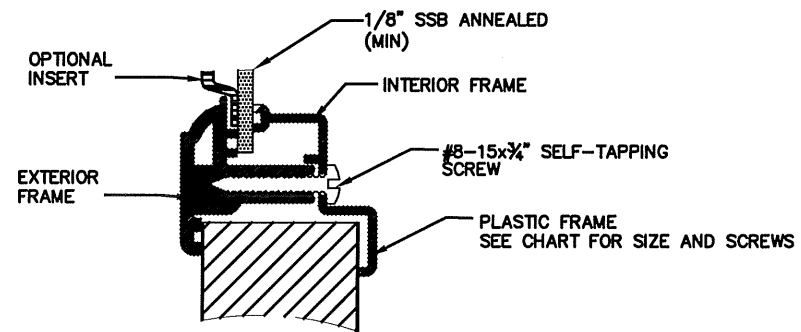
PROFESSIONAL ENGINEER'S SEAL PROVIDED ONLY FOR VERIFICATION OF WINDLOAD CONSTRUCTION DETAILS.

The Genuine. The Original.

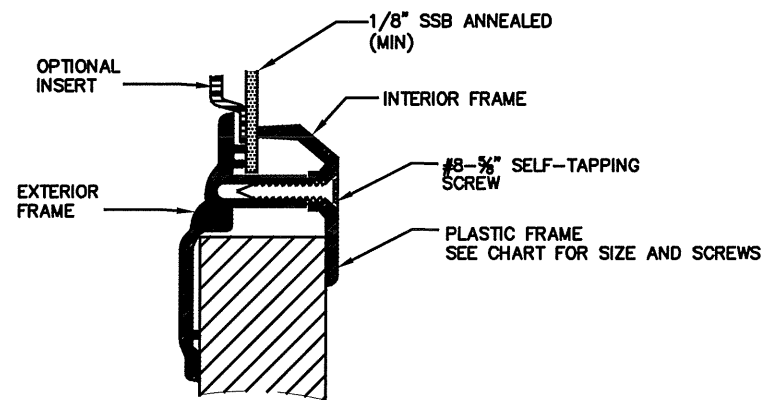


A DIVISION OF OVERHEAD DOOR CORP
3395 ADDISON DRIVE
PENSACOLA, FLORIDA 32514
(850) 474-9890

STATIC PRESSURE RATINGS		APPROVED SIZES		SCALE: N.T.S.		SIZE: A	
DESIGN (PSF):	+36.80/-41.60	MAX WIDTH:	18'-2"	DATE		NAME	
TEST (PSF):	+55.20/-62.40	MAX HEIGHT:	24'-0"	DRAWN	03/23/21	SW	
IMPACT/CYCLIC RATED (YES/NO): YES		MAX SECTION HEIGHT:	24"	CHECKED			
MODELS 5740/5760/190/490/7560/591-596/599				SHEET 2 OF 3			
WINDLOAD SPECIFICATION OPTION CODE 2618				DRAWING PART NO.		REV.	
				411838		-	

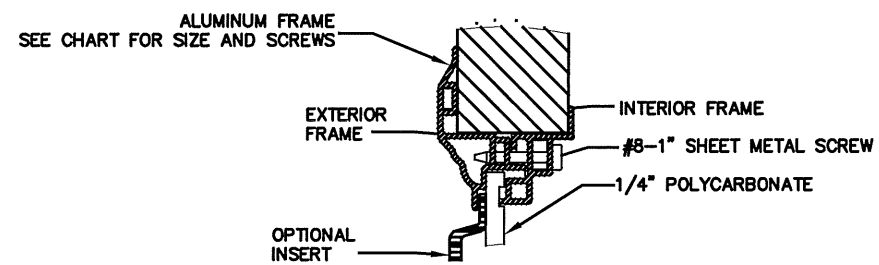


DETAIL G
NON-IMPACT GLAZING

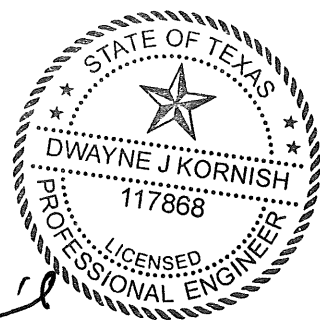


DETAIL H
NON-IMPACT GLAZING

OUTSIDE FRAME SIZE	DAYLIGHT OPENING (DLO)	SCREW QTY EA HORIZ LEG	SCREW QTY EA VERT LEGS	SCREW QTY TOTAL	DETAIL
17"X51"	14X48	5	3	16	G
15.1X44"	11.5"X40.5"	8	3	22	H
14.9X20.8"	11"X17"	3	3	12	H
7"X40.8	4"X37.8"	5	2	14	H
15.3"X44.1"	11.3"X40.1"	6	3	18	I
14.6"X20.8"	10.6"X16.8"	3	2	10	I
13"X38"	9"X34"	5	2	14	I



DETAIL I
IMPACT GLAZING



DWAYNE J. KORNISH, PE
4578 COUNTY ROAD 160
MOUNT HOPE, OHIO
FL PE 77845
TX PE 117868

PROFESSIONAL ENGINEER'S SEAL PROVIDED ONLY FOR VERIFICATION OF WINDLOAD CONSTRUCTION DETAILS.

The Genuine. The Original.



A DIVISION OF OVERHEAD DOOR CORP
3395 ADDISON DRIVE
PENSACOLA, FLORIDA 32514
(850) 474-9890

STATIC PRESSURE RATINGS		APPROVED SIZES		SCALE: N.T.S.		SIZE: A	
DESIGN (PSF):	+36.80/-41.60	MAX WIDTH:	18'-2"	DATE	03/23/21	NAME	SW
TEST (PSF):	+55.20/-62.40	MAX HEIGHT:	24'-0"	DRAWN	03/23/21	CHECKED	
IMPACT/CYCLIC RATED (YES/NO): YES		MAX SECTION HEIGHT: 24"					
MODELS 5740/5760/190/490/7560/591-596/599				SHEET 3 OF 3			
WINDLOAD SPECIFICATION OPTION CODE 2618				DRAWING PART NO.		REV.	
				411838		-	