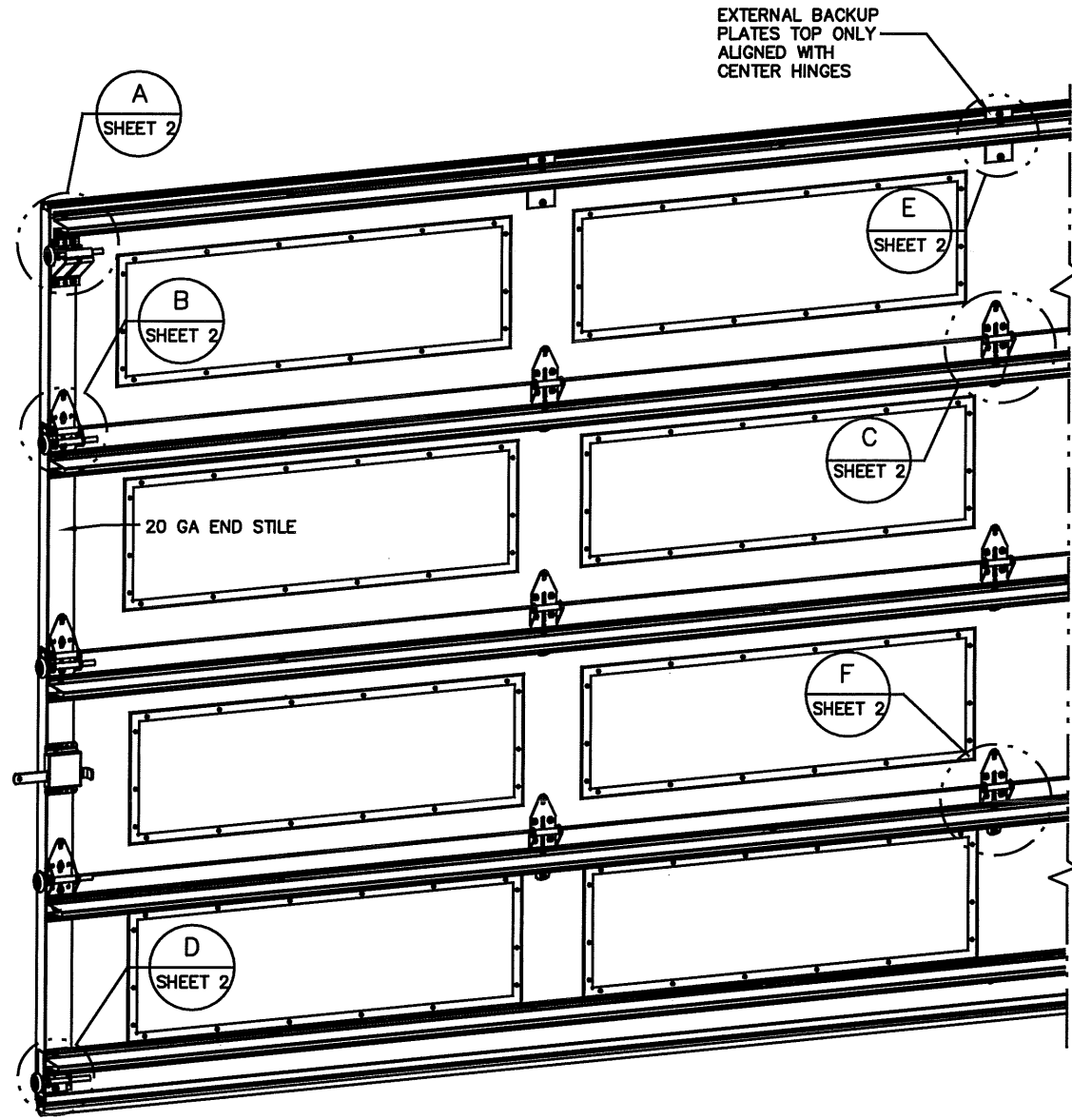
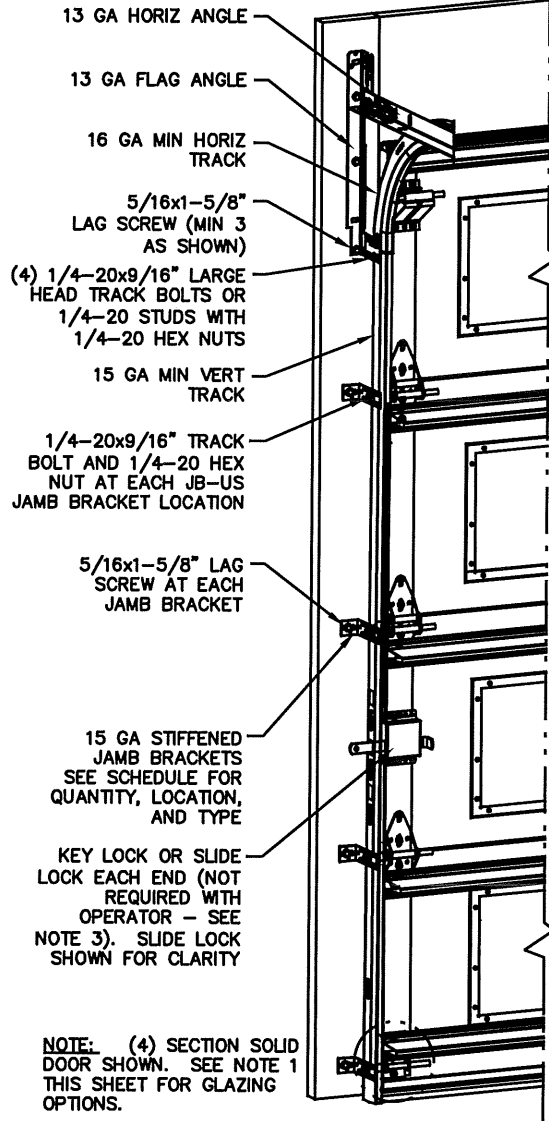


NOTES:

- NON-IMPACT RESISTANT GLAZING OPTION - 3/32" MINIMUM SSB GLAZING IN MOLDED FRAMES SCREWED TOGETHER WITH A MINIMUM OF (14) #8x1" SCREWS (2X ALONG THE HORIZONTAL AND 5X ALONG THE VERTICAL) INSTALLED IN ANY OR ALL SECTIONS MEETS UNIFORM STATIC WIND PRESSURES SHOWN ON THIS DRAWING. MAXIMUM GLAZING DIMENSIONS SHALL BE 38.5" x 13" CUTOUT. GLASS IS NOT IMPACT RESISTANT AND DOES NOT MEET THE REQUIREMENTS FOR WIND-BORNE DEBRIS REGIONS. SEE DETAIL G, H ON SHEET 3 FOR ASSEMBLY DETAILS. ALTERNATE OPTION- 1/2" DSB ANNEALED GLAZING IN ALUMINUM EXTERIOR FRAME/PLASTIC MOLDED INTERIOR FRAME SCREWED TOGETHER WITH A MINIMUM OF (14) #8x1" SCREWS (2X ALONG THE HORIZONTAL AND 5X ALONG THE HORIZONTAL) INSTALLED IN ANY OR ALL SECTIONS MEETS UNIFORM STATIC WIND PRESSURES SHOWN ON THIS DRAWING. MAXIMUM GLAZING DIMENSIONS SHALL BE 39" X 5-1/6" CUTOUT. GLASS IS NOT IMPACT RESISTANT AND DOES NOT MEET THE REQUIREMENTS FOR WIND-BORNE DEBRIS REGIONS. DLO = 4"x37.8".
- VINYL OR WOOD DOOR STOP NAILED A MAXIMUM OF 6" O.C. MUST OVERLAP TOP AND BOTH ENDS OF PANELS MINIMUM 7/16" TO MEET NEGATIVE PRESSURES.
- KEY LOCK, SLIDE LOCK, OR OPERATOR REQUIRED.
- FACER STEEL TO HAVE A MINIMUM 29 GA THICKNESS AND BACKER STEEL TO HAVE A MINIMUM 29 GA THICKNESS.
- EACH SECTION HAS AN INTERNAL 1" WIDE X 20 GA CONTINUOUS STEEL STRIP AT THE TOP AND BOTTOM OF THE SECTION.
- DOOR JAMB TO BE MINIMUM 2x6 SOUTHERN PINE LUMBER. REFER TO JAMB CONNECTION SUPPLEMENT FOR ATTACHMENT TO SUPPORTING STRUCTURE.
- FOR LOW HEAD ROOM LIFT CONDITIONS, TOP BRACKET SHALL BE A 13 GA LHR 7/4 TOP BRACKET WITH A MINIMUM OF (3) 1/4-14x7/8" SELF DRILLING CRIMPITE SCREWS IN LIEU OF THE BRACKET SHOWN ON THIS DRAWING. U-BAR ON TOP SECTION SHALL BE INSTALLED ON TOP OF LHR TOP BRACKETS.
- MINIMUM 1" OVERLAP ON BOTH JAMBS REQUIRED TO MEET NEGATIVE DESIGN PRESSURES.
- COMPLIES WITH THE REQUIREMENTS OF IBC/IRC 2018.



REVISIONS
- RELEASE DRAWING SW 3/23/2021

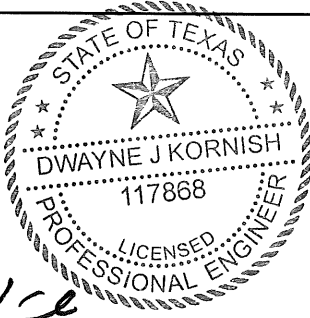
SUPERIMPOSED DESIGN PRESSURE LOADS ON SUPPORTING STRUCTURE

DOOR WIDTH	DOOR HEIGHT	UNIFORM LOAD EACH JAMB (PLF)
17'-2"	ALL	+109.9/-127.1
18'-2"	ALL	+116.3/-134.5

JAMB BRACKET SCHEDULE

DOOR HEIGHT	NO. OF SECTIONS	NO. OF JAMB BRACKETS (EACH JAMB)	LOCATION OF CENTERLINE OF JAMB BRACKETS MEASURED FROM BOTTOM OF TRACK (ALL DIMENSIONS ± 2")
6'-6"	4	4	2" (JB-US), 21-3/4" (JB-US), 48" (JB-US), 57-1/4" (JB-US)
7'-0"	4	4	2" (JB-US), 21-3/4" (JB-US), 42" (JB-US), 63-1/4" (JB-US)
7'-6"	4 OR 5	4	2" (JB-US), 26-3/4" (JB-US), 45" (JB-US), 74-1/2" (JB-US)
8'-0"	4 OR 5	4	2" (JB-US), 21-3/4" (JB-US), 48" (JB-US), 75-1/2" (JB-US)
> 8'-0"			SEE NOTE BELOW

NOTE: (JB-US) FOLLOWING DIMENSION DENOTES SLOTTED JAMB BRACKET ATTACHED TO TRACK WITH 1/4-20x9/16" TRACK BOLT AND NUT AS SHOWN ABOVE.
ALL DOORS GREATER THAN 8' IN HEIGHT REQUIRE USE OF CONTINUOUS WALL ANGLE. SEE SUPPLEMENT TRACK CHART FOR DETAILS.



DWAYNE J. KORNISH, PE
4576 COUNTY ROAD 160
MOUNT HOPE, OHIO
FL PE 77845
TX PE 117868

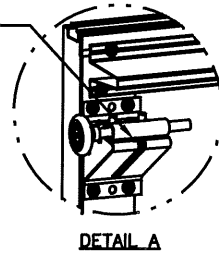
PROFESSIONAL ENGINEER'S SEAL PROVIDED ONLY FOR VERIFICATION OF WINDLOAD CONSTRUCTION DETAILS.



A DIVISION OF OVERHEAD DOOR CORP
3395 ADDISON DRIVE
PENSACOLA, FLORIDA 32514
(850) 474-9890

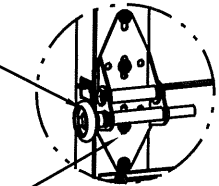
STATIC PRESSURE RATINGS		APPROVED SIZES	SCALE: N.T.S.	SIZE: A
DESIGN (PSF):	+12.80/-14.80	MAX WIDTH: 18'-2"	DATE	NAME
TEST (PSF):	+19.20/-22.20	MAX HEIGHT: 24'-0"	DRAWN	03/23/21
IMPACT/CYCLIC RATED (YES/NO): NO		MAX SECTION HEIGHT: 24" CHECKED		
MODELS 5740/5760/190/490/7560/591-596/599			SHEET 1 OF 3	
WINDLOAD SPECIFICATION OPTION CODE 2614			DRAWING PART NO.	REV.
			411834	-

16 GA 'A' FRAME BRACKET WITH
13 GA ROLLER CARRIER
ATTACHED WITH (4) 1/4-20x3/4"
SELF DRILLING SCREWS



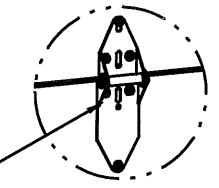
DETAIL A

2" STEEL ROLLER WITH 5-1/4"
STEM.
(OPTIONAL: BALL BEARING NYLON
ROLLERS)



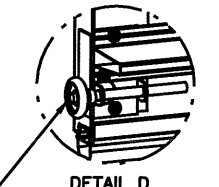
DETAIL B

13 GA WIDE BODY END
HINGE ATTACHED WITH
(4) 1/4-20x3/4" SELF
DRILLING SCREWS.



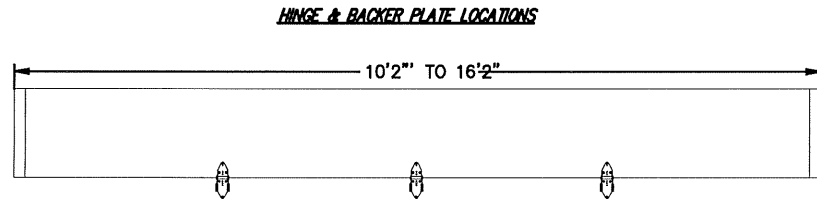
DETAIL C

14 GA WIDE BODY
EXTENDED HINGE
ATTACHED WITH (7)
1/4-20x3/4" SELF
DRILLING SCREWS.
(2 THROUGH STRUT
AND HINGE)

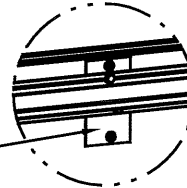


DETAIL D

14 GA BOTTOM BRACKET
ATTACHED WITH (3)
1/4-20x3/4" SELF DRILLING
SCREWS

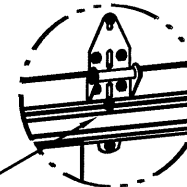


20 GA BACK PLATE
ATTACHED WITH DOUBLE
SIDED TAPE AND (2)
1/4-20x3/4" SELF
DRILLING SCREWS AT
TAPE LOCATION. UBAR
ATTACHED WITH (2)
1/4-20x3/4" THROUGH
STRUT AND PLATE.

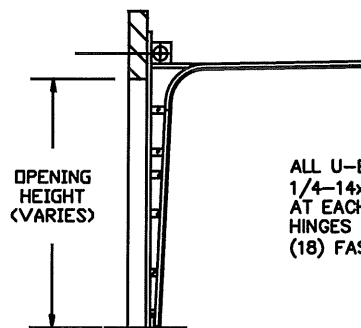


DETAIL E

14 GA WIDE BODY
EXTENDED HINGE
ATTACHED WITH (7)
1/4-20x3/4" SELF
DRILLING SCREWS.
(2 THROUGH STRUT
AND HINGE)



DETAIL F



OPTIONAL 2-PIECE TRACK DETAIL

ALL U-BARS SHALL BE ATTACHED WITH (2)
1/4-14x7/8" SELF DRILLING CRIMPITITE SCREWS
AT EACH HINGE LOCATION AND BETWEEN ALL END
HINGES AND INTERMEDIATE HINGES. A MINIMUM OF
(18) FASTENERS ARE TO BE USED.

TOP STRUT SHALL BE 2"
20GA 80KSI U-BAR.

(4) SECTION DOORS WITH
(1) 2" 20 GA 80 KSI U-BARS
(4) 3" 18 GA 80 KSI U-BARS
LOCATED AS SHOWN

(5) SECTION DOORS WITH
(1) 2" 20 GA 80 KSI U-BARS
(5) 3" 18 GA 80 KSI U-BARS
LOCATED AS SHOWN

(6) SECTION DOORS WITH
(1) 2" 20 GA 80 KSI U-BARS
(6) 3" 18 GA 80 KSI U-BARS
LOCATED AS SHOWN

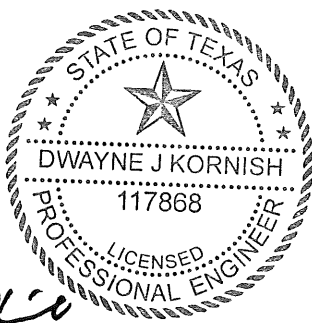
(7) SECTION DOORS WITH
(1) 2" 20 GA 80 KSI U-BARS
(7) 3" 18 GA 80 KSI U-BARS
LOCATED AS SHOWN

(8) SECTION DOORS WITH
(1) 2" 20 GA 80 KSI U-BARS
(8) 3" 18 GA 80 KSI U-BARS
LOCATED AS SHOWN

(9) SECTION DOORS WITH
(1) 2" 20 GA 80 KSI U-BARS
(9) 3" 18 GA 80 KSI U-BARS
LOCATED AS SHOWN

(10) SECTION DOORS WITH
(1) 2" 20 GA 80 KSI U-BARS
(10) 3" 18 GA 80 KSI U-BARS
LOCATED AS SHOWN

REVISIONS



DWAYNE J. KORNISH, PE
4578 COUNTY ROAD 160
MOUNT HOPE, OHIO
FL PE 77845
TX PE 117868

PROFESSIONAL ENGINEER'S SEAL PROVIDED ONLY FOR
VERIFICATION OF WINDLOAD CONSTRUCTION DETAILS.

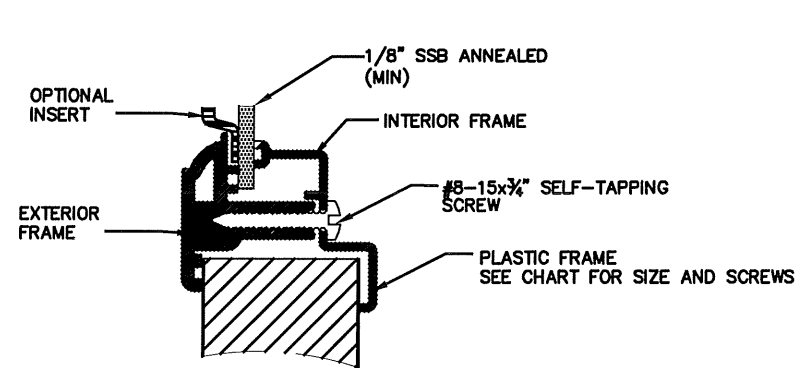
The Genuine. The Original.



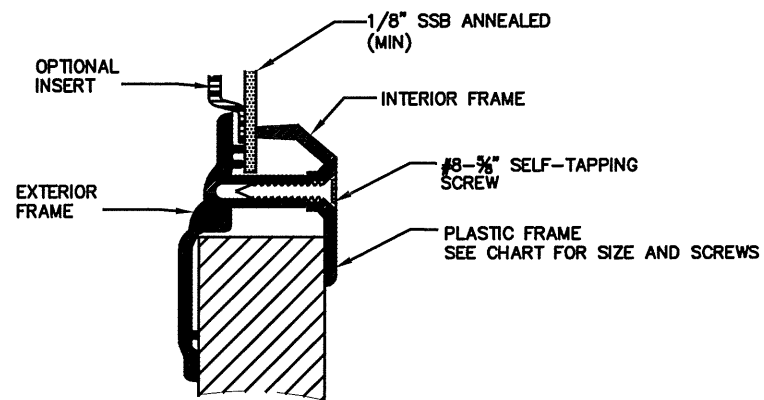
A DIVISION OF OVERHEAD DOOR CORP
3395 ADDISON DRIVE
PENSACOLA, FLORIDA 32514
(850) 474-9890

STATIC PRESSURE RATINGS		APPROVED SIZES		SCALE: N.T.S.		SIZE: A	
DESIGN (PSF):	+12.80/-14.80	MAX WIDTH:	18'-2"	DATE	03/23/21	NAME	SW
TEST (PSF):	+19.20/-22.20	MAX HEIGHT:	24'-0"	DRAWN			
IMPACT/CYCLIC RATED (YES/NO): NO		MAX SECTION HEIGHT:	24'	CHECKED			
MODELS 5740/5760/190/490/7560/591-596/599				SHEET 2 OF 3			
WINDLOAD SPECIFICATION OPTION CODE 2614				DRAWING PART NO.		REV.	
				411834		-	

REVISIONS

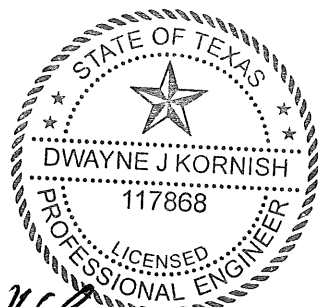


DETAIL G
NON-IMPACT GLAZING



DETAIL H
NON-IMPACT GLAZING

OUTSIDE FRAME SIZE	DAYLIGHT OPENING (DLO)	SCREW QTY EA HORIZ LEG	SCREW QTY EA VERT LEGS	SCREW QTY TOTAL	DETAIL
17"X51"	14X48	5	3	16	G
15.1X44"	11.5"X40.5"	8	3	22	H
14.9X20.8"	11"X17"	3	3	12	H
7"X40.8	4"X37.8"	5	2	14	H



DJK
5/20/2021

DWAYNE J. KORNISH, PE
4578 COUNTY ROAD 160
MOUNT HOPE, OHIO
FL PE 77845
TX PE 117868

PROFESSIONAL ENGINEER'S SEAL PROVIDED ONLY FOR VERIFICATION OF WINDLOAD CONSTRUCTION DETAILS.

The Genuine. The Original.



A DIVISION OF OVERHEAD DOOR CORP
3395 ADDISON DRIVE
PENSACOLA, FLORIDA 32514
(850) 474-9890

STATIC PRESSURE RATINGS		APPROVED SIZES		SCALE: N.T.S.		SIZE: A	
DESIGN (PSF):	+12.80/-14.80	MAX WIDTH:	18'-2"	DATE	03/23/21	NAME	SW
TEST (PSF):	+19.20/-22.20	MAX HEIGHT:	24'-0"	DRAWN		CHECKED	
IMPACT/CYCLIC RATED (YES/NO): NO		MAX SECTION HEIGHT:	24"				
MODELS 5740/5760/190/490/7560/591-596/599				SHEET 3 OF 3			
WINDLOAD SPECIFICATION OPTION CODE 2614				DRAWING PART NO.		REV.	
				411834		-	