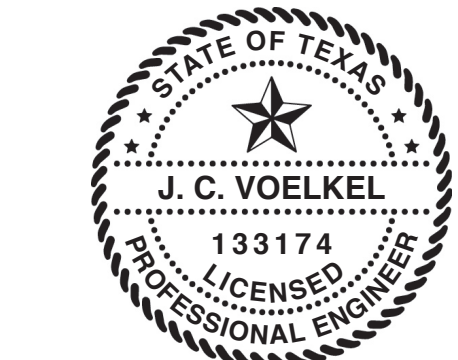
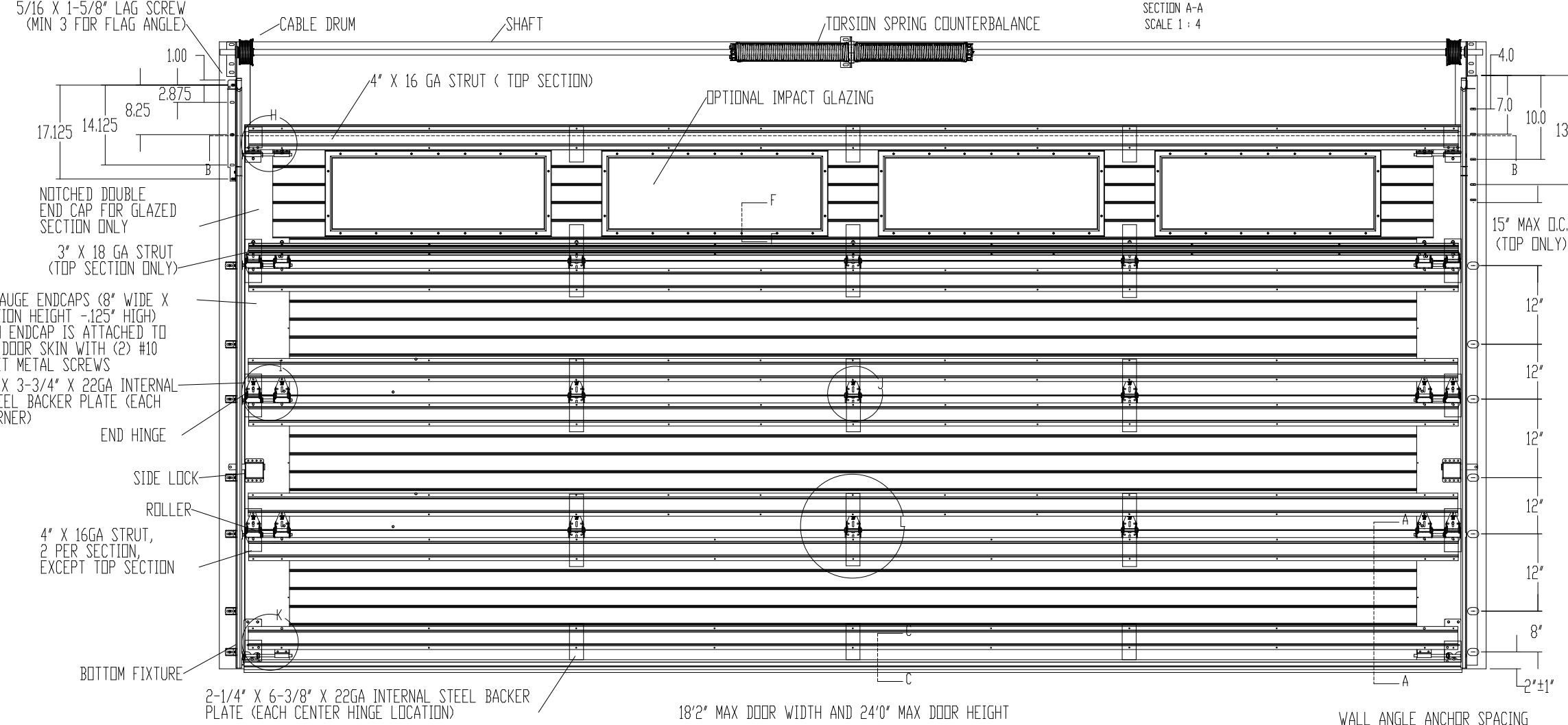
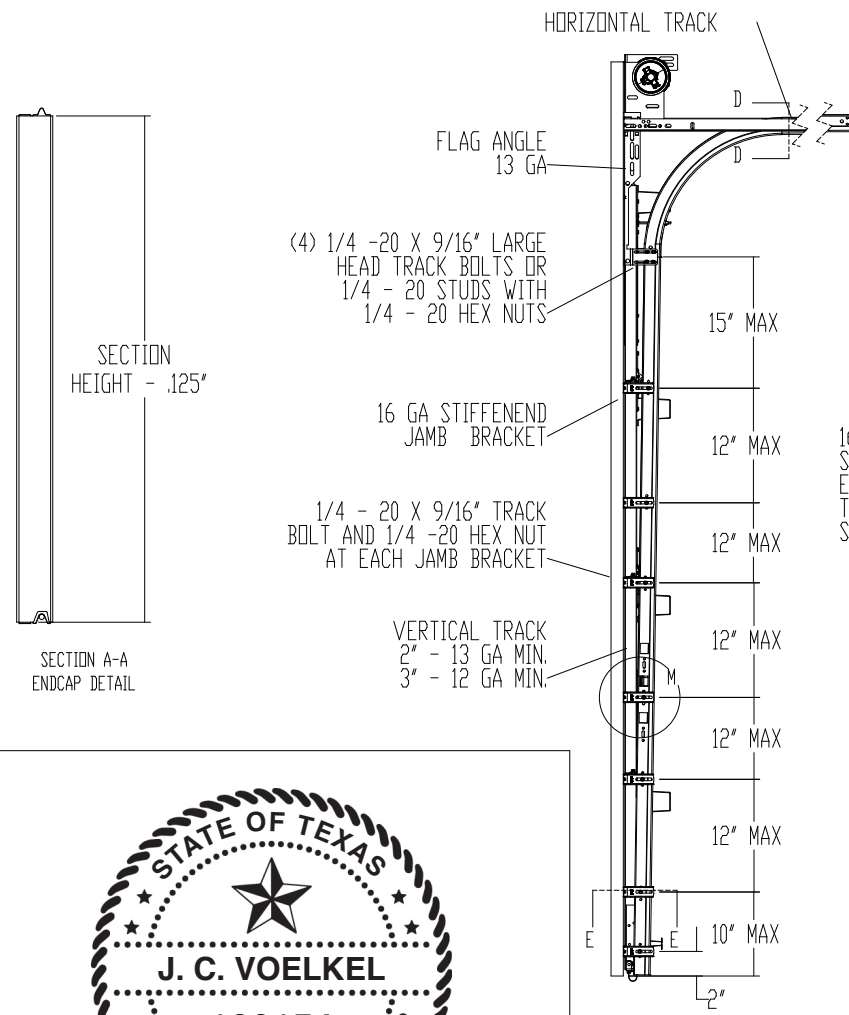
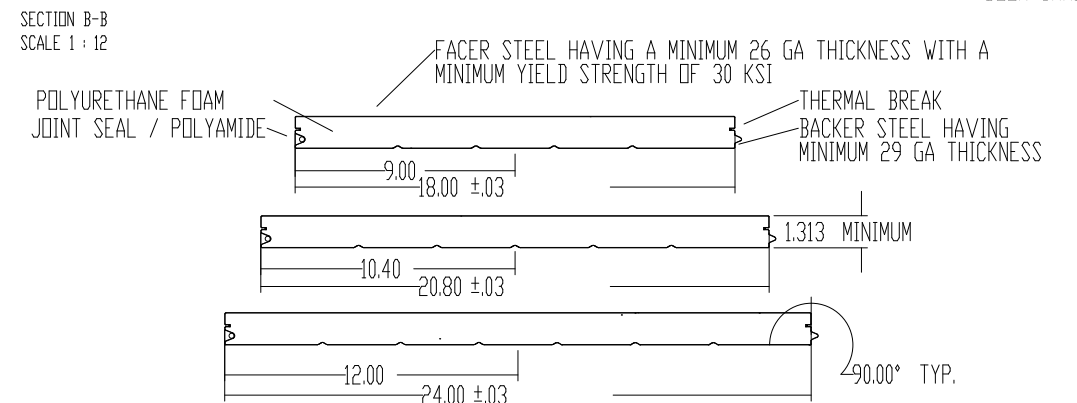


NOTES: (UNLESS OTHERWISE SPECIFIED)

1. RATED DESIGN LOAD +46/-52 PSF.
2. SECTION HEIGHTS MAY VARY TO CREATE VARIOUS DOOR HEIGHTS, 24' MAXIMUM SECTION HEIGHT.
3. MINIMUM 1" OVERLAP ON BOTH JAMBS REQUIRED TO MEET NEGATIVE DESIGN PRESSURES.
4. TESTED IN ACCORDANCE WITH DADE COUNTY PROTOCOLS TAS 201-94, TAS 202-94, & TAS 203-94.
5. DOOR SKIN MUST BE 30,000 PSI MIN. YIELD STRENGTH.
6. JAMB LOAD CALCULATIONS:
 $(1/2 \text{ DOOR WIDTH}) \times (1 \text{ FT OF HEIGHT}) \times (\text{DESIGN PRESSURE})$
 $(9.08) \times (1 \text{ FOOT}) \times (46.00 \text{ AND } -52.00) \times (17.68 / -472.16) \text{ LB}$
7. JAMB FASTENER REQUIREMENTS:
 $F = (1/2 \text{ DOOR WIDTH}) \times (1 \text{ FT OF HEIGHT}) \times (\text{DESIGN PRESSURE})$
 $F = 417 \text{ LBS.}$
8. DOOR SKIN MATERIAL SHALL BE GALVANIZED ACCORDING TO ASTM A-525 TO G40 MIN, WITH BAKED-ON PRIMER, AND BAKED-ON POLYESTER PAINT TOP COAT.
9. FOR ANCHORING INTO WOOD, USE ONE 5/16" LAG SCREW PER TRACK BRACKET WITH 1-1/2" EMBEDMENT INTO SOUTHERN PINE (G=0.55) OR BETTER.
10. WELD SLOT ON ANGLE 3/32" X 1" LONG ON 12" CENTERS, "IF WELDING MOUNTING OPTION IS CHOSEN."
11. LIFT UP MECHANISM-MANUAL, CHAIN LIFT, OR OPERATOR IS NOT PART OF THIS APPROVAL.
12. STANDARD LIFT, HIGH LIFT, VERTICAL LIFT, AND LOW HEADROOM TRACK IS AVAILABLE. FOR LOW HEADROOM LIFT CONDITIONS TOP BRACKET SHALL BE 13 GA LHR 7/4 TOP BRACKET WITH A MIN OF (3) 1/4 - 14 X 7/8" SELF DRILLING CRIMPITE SCREWS IN LIEU OF THE BRACKET SHOWN ON DRAWING. U-BAR ON TOP SECTION SHALL BE INSTALLED ON TOP OF LHR TOP BRACKETS.
13. SEE SHEET 5 FOR STRUT ATTACHMENT DETAILS.
14. KEY LOCK, OR SIDE LOCK REQUIRED.
15. IMPACT RESISTANT GLAZING OPTION- IMPACT RESISTANT GLAZING SYSTEM MAY BE INSTALLED IN TOP OR INTERMEDIATE SECTIONS. GLAZING SHALL BE 1/4" POLYCARBONATE, FASTENED WITH # 8 X 1" SMS. SEE DETAIL F-F ON SHEET 2 FOR ASSEMBLY DETAILS. MAXIMUM OF ONE GLAZED SECTION.
16. THE DESIGN OF THE SUPPORTING STRUCTURAL ELEMENTS SHALL BE THE RESPONSIBILITY OF THE PROFESSIONAL OF RECORD FOR THE BUILDING OR STRUCTURE AND IN ACCORDANCE WITH CURRENT BUILDING CODES FOR THE LOADS LISTED ON THIS DRAWING.
17. A 2-1/4" X 6-3/8" X 22 GA BACKER PLATE IS TO BE LOCATED AT EVERY CENTER HINGE. 3" X 3-3/4" X 22 GA BACKUP PLATE AT EACH END HINGE LOCATIONS. EACH IS ADHERED TO THE INTERIOR OF THE SECTION BACKER STEEL.

THE DOORS ARE DESIGNED AND MANUFACTURED TO COMPLY WITH THE 2018 IRC AND THE 2018 IBC.

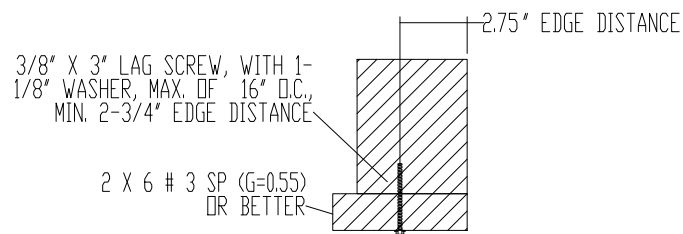
REVISIONS				
ER	REV	DESCRIPTION	DATE	APVL
ER	P00	NEW DRAWING	8/28/18	ESC
32442	A	ADDED IRC/IBC NOTE	8/26/20	TLC



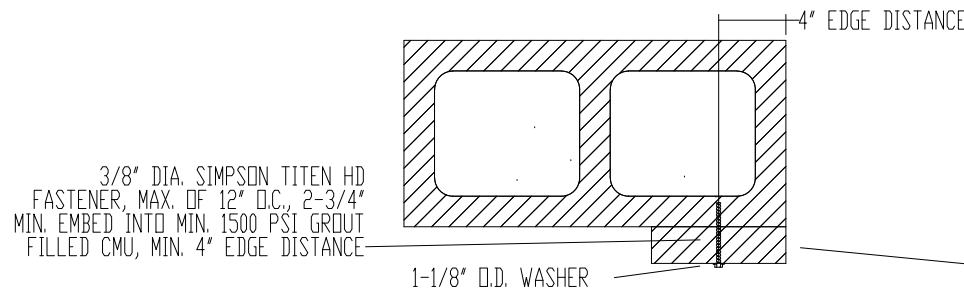
J. CHRISTIAN VOELKEL, PE
 312 N. WARRINGTON ROAD, UNIT 1A
 PENSACOLA, FL
 FL PE 82229 TX PE 133174
 PROFESSIONAL ENGINEER'S SEAL PROVIDED ONLY FOR VERIFICATION OF WINDLOAD CONSTRUCTION DETAILS.



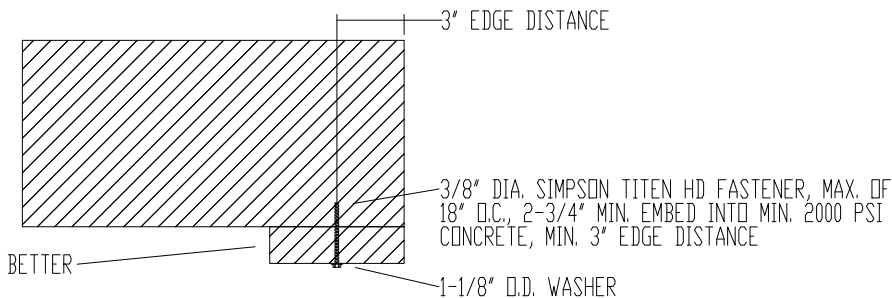
<p>THIRD ANGLE PROJECTION</p>	<p>INTERPRET DIMS & TOLS PER ASME Y14.5M ALL DIMS ARE IN INCHES DO NOT SCALE DIMS CIRCLED WITH SYMBOL ' (INSP-1)BN' ARE CRITICAL TO QUALITY DESIGN FEATURES & MUST MEET APPLICABLE IN-PROCESS INSPECTION STANDARDS.</p>	<p>TOLERANCES: .X = ±.1 .XX = ±.03 .XXX = ±.010 ANGULAR = ±.5° HOLES: < 0.251 = +.004/-0.003 0.251-0.500 = +.006/-0.003 > 0.500 = +.008/-0.003 ALL GEOMETRY GOVERNED BY 3D CAD DATABASE:</p>	<p>APPROVALS DATE</p> <p>DRAWN E. CONRAD 8/28/18</p> <p>CHECKED D. KORNISH -</p> <p>APPROVED - -</p> <p>MATERIAL - -</p> <p>FINISH - -</p>	<p>PENSACOLA, FLORIDA</p>
			<p>WINDLOAD SPECIFICATION OPTION CODE 2351</p>	<p>DESCRIPTION WINDLOAD MODELS 4600/4650/6600/8300/8500/8650/5150/5200/TM515/TM525, +46/-52PSF DADE COUNTY, 18'2" MAX WIDTH</p>
			<p>SCALE 1:12 UOM = EA SHEET 1 OF 5</p>	



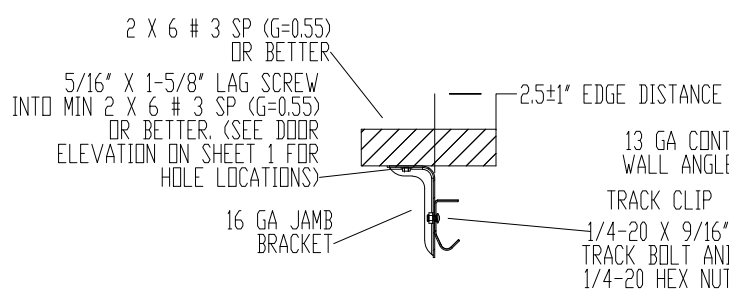
WOOD MOUNTED TO # 3 SOUTHERN PINE SUBSTRATE



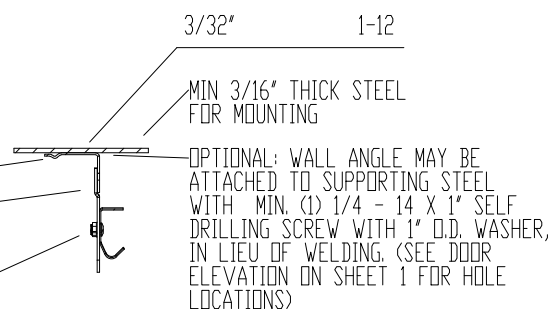
WOOD MOUNTED TO GROUT FILLED MASONRY BLOCK DETAIL



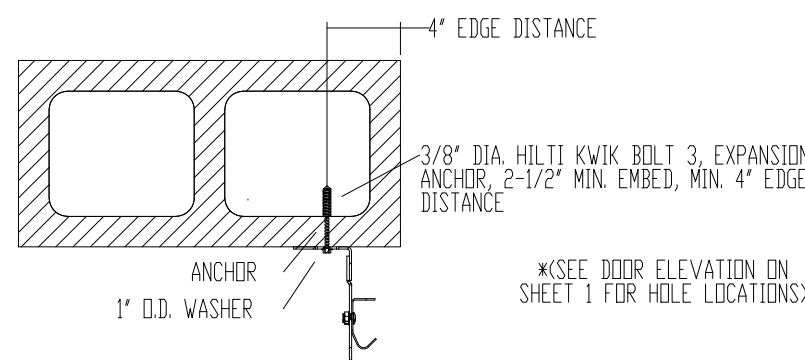
WOOD MOUNTED TO 2000 PSI CONCRETE DETAIL



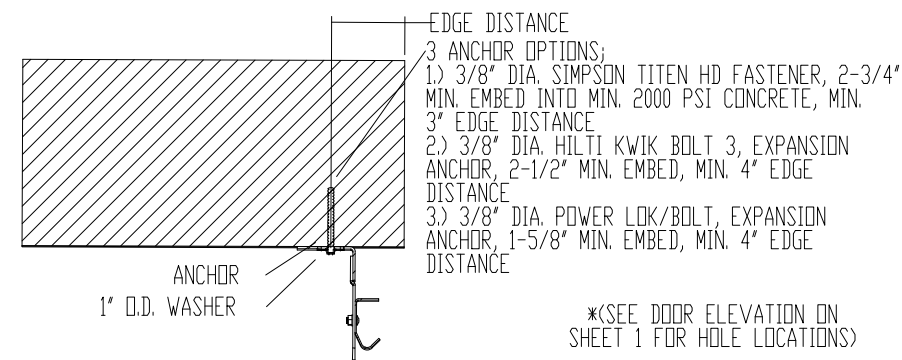
MOUNTING TO WOOD JAMB DETAIL



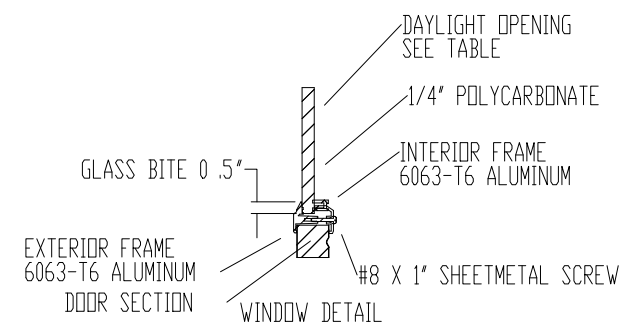
MOUNTING TO STEEL JAMB DETAIL



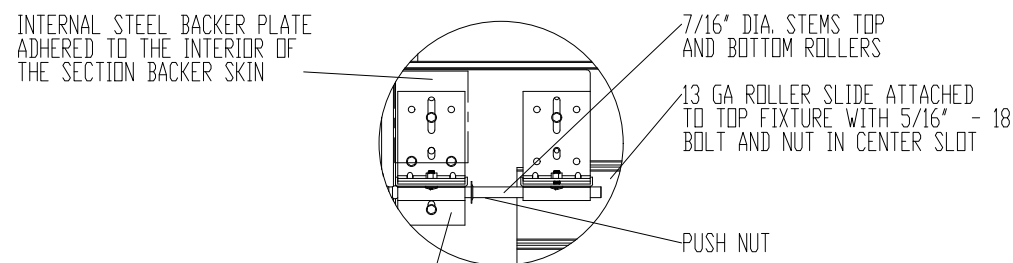
MOUNTING TO GROUT FILLED MASONRY BLOCK DETAIL



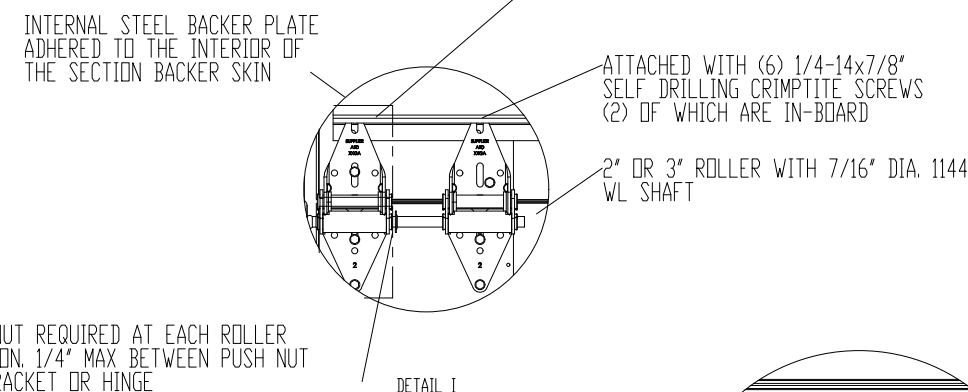
MOUNTING TO 2000 PSI CONCRETE DETAIL



SECTION F-F SCALE 1:4

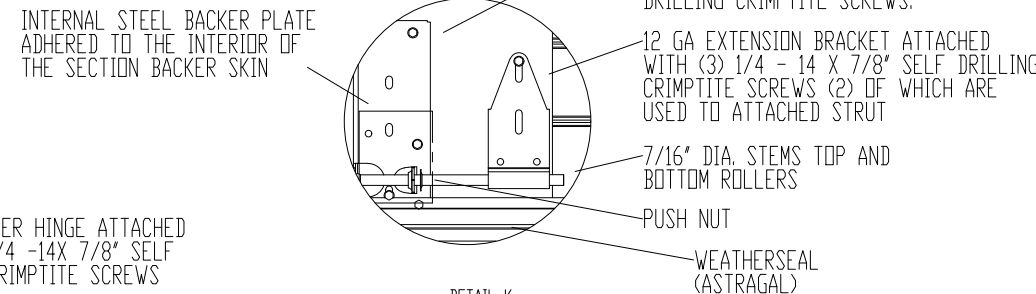


DETAIL H SCALE 1:4

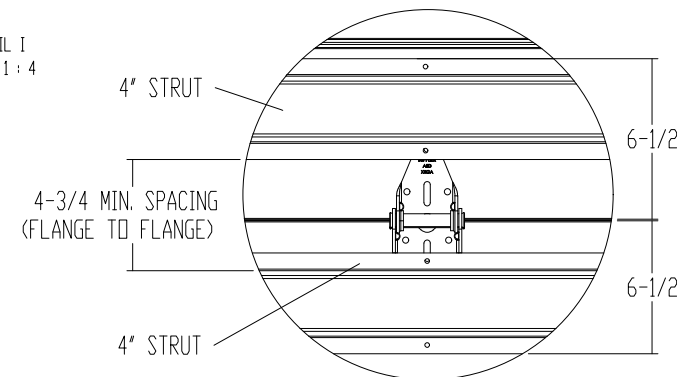


DETAIL I SCALE 1:4

TOP FIXTURE 'L' REINFORCING ANGLE BRACKET



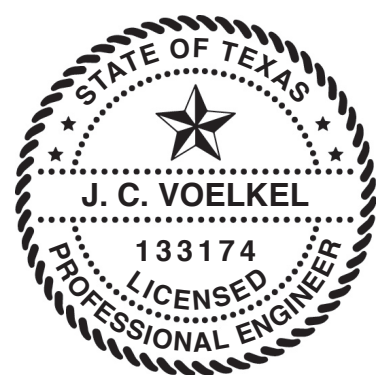
DETAIL K SCALE 1:4



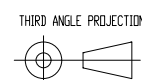
DETAIL L SCALE 1:4



DETAIL J SCALE 1:4



J. CHRISTIAN VOELKEL, PE
312 N. NEW WARRINGTON ROAD, UNIT 1A
PENSACOLA, FL
FL PE 82229 TX PE 133174
PROFESSIONAL ENGINEER'S SEAL PROVIDED ONLY FOR VERIFICATION OF WINDLOAD CONSTRUCTION DETAILS.



A DIVISION OF OVERHEAD DOOR CORP
3395 ADDISON DRIVE
PENSACOLA, FLORIDA 32514
(850)-474-9890

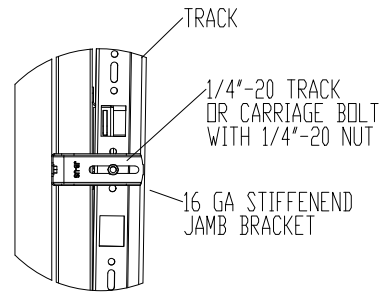
UNLESS OTHERWISE SPECIFIED
INTERPRET DIMS & TOLS PER ASME Y14.5M
ALL DIMS ARE IN INCHES
DO NOT SCALE
DIM'S CIRCLED WITH SYMBOL 'INSPECTION' ARE CRITICAL TO QUALITY DESIGN FEATURES & MUST MEET APPLICABLE IN-PROCESS INSPECTION STANDARDS.

TOLERANCES:	
.X	= ±.1
.XX	= ±.03
.XXX	= ±.010
ANGULAR	= ±.5°
HOLES:	
< 0.251	= +.004/-0.003
0.251-0.500	= +.006/-0.003
> 0.500	= +.008/-0.003

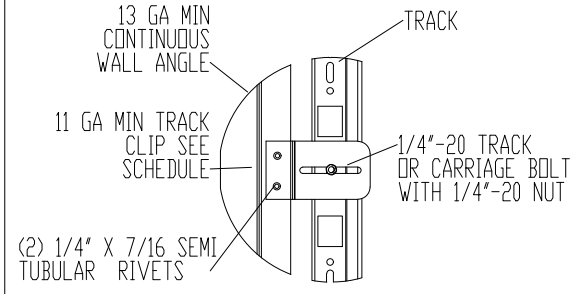
ALL GEOMETRY GOVERNED BY 3D CAD DATABASE:

APPROVALS		DATE
DRAWN	E. CONRAD	8/28/18
CHECKED	D. KORNISH	-
APPROVED	-	-
MATERIAL	-	-
FINISH	-	-
WINDLOAD SPECIFICATION OPTION CODE 2351		

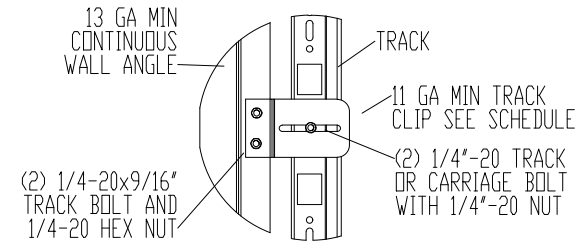
PENSACOLA, FLORIDA		
DESCRIPTION WINDLOAD MODELS 4600/4650/6600/8300/ 8500/8650/5150/5200/TM515/TM525, +46/-52PSF DADE COUNTY, 18'2" MAX WIDTH		
SIZE	DWG NO. D-363476	REV A
SCALE 1:12	UOM = EA	SHEET 2 OF 5



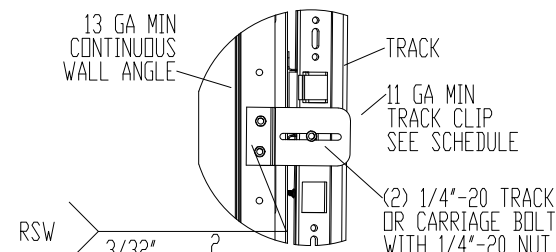
TYPICAL TRACK AND JAMB FASTENERS DETAIL



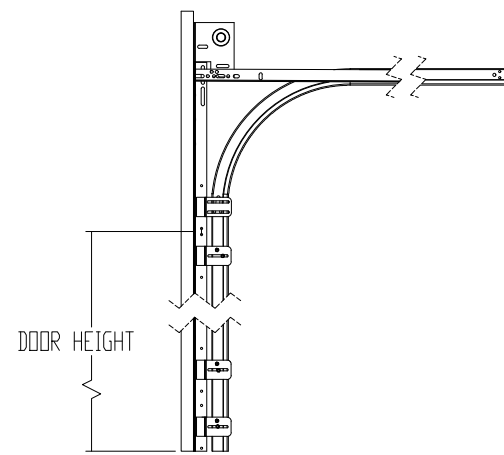
TYPICAL TRACK CLIP RIVETING DETAIL



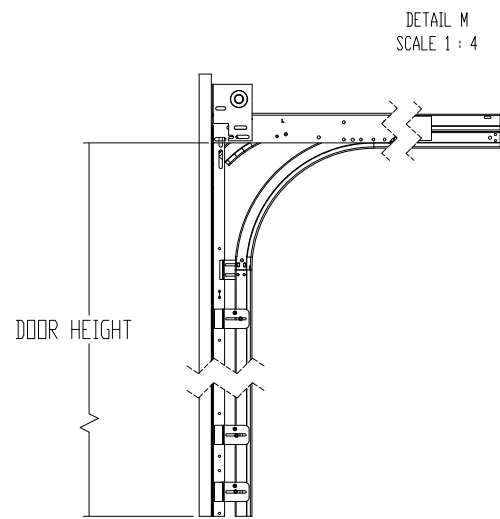
TYPICAL TRACK CLIP BOLTING DETAIL
OPTIONAL WALL ANGLE TRACK



TYPICAL TRACK CLIP WELDING DETAIL

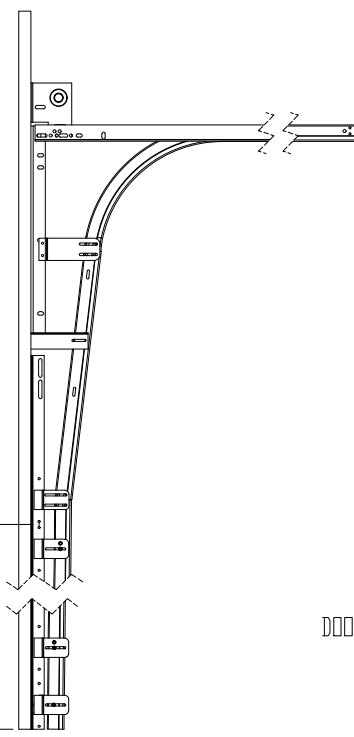


STANDARD LIFT TRACK DETAIL

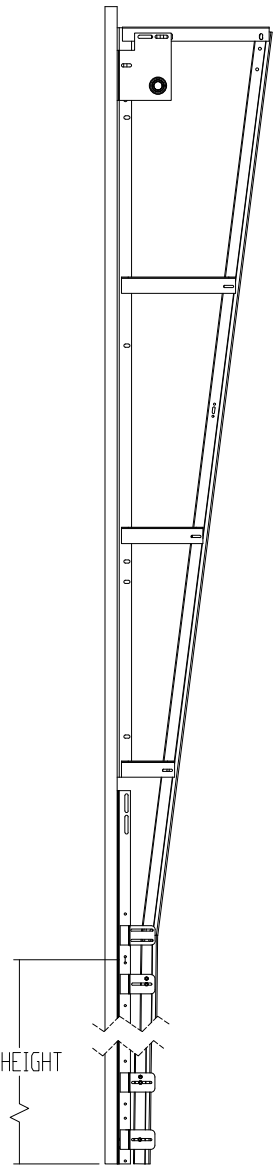


LOW HEADROOM TRACK DETAIL

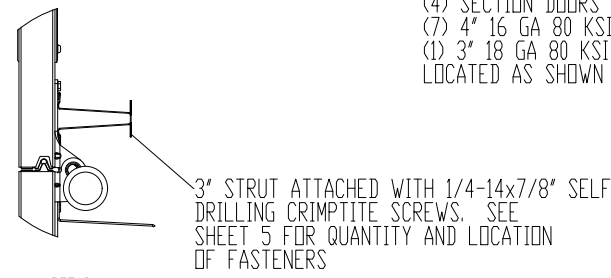
TRACK DETAIL SCALE 1:12



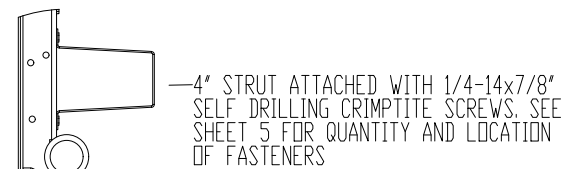
HIGH LIFT TRACK DETAIL



VERTICAL LIFT TRACK DETAIL



DETAIL N SCALE 1:4



DETAIL O SCALE 1:4

(7) SECTION DOORS WITH
(13) 4" 16 GA 80 KSI U- BARS
(1) 3" 18 GA 80 KSI U- BARS
LOCATED AS SHOWN

(6) SECTION DOORS WITH
(11) 4" 16 GA 80 KSI U- BARS
(1) 3" 18 GA 80 KSI U- BARS
LOCATED AS SHOWN

(5) SECTION DOORS WITH
(9) 4" 16 GA 80 KSI U- BARS
(1) 3" 18 GA 80 KSI U- BARS
LOCATED AS SHOWN

(4) SECTION DOORS WITH
(7) 4" 16 GA 80 KSI U- BARS
(1) 3" 18 GA 80 KSI U- BARS
LOCATED AS SHOWN

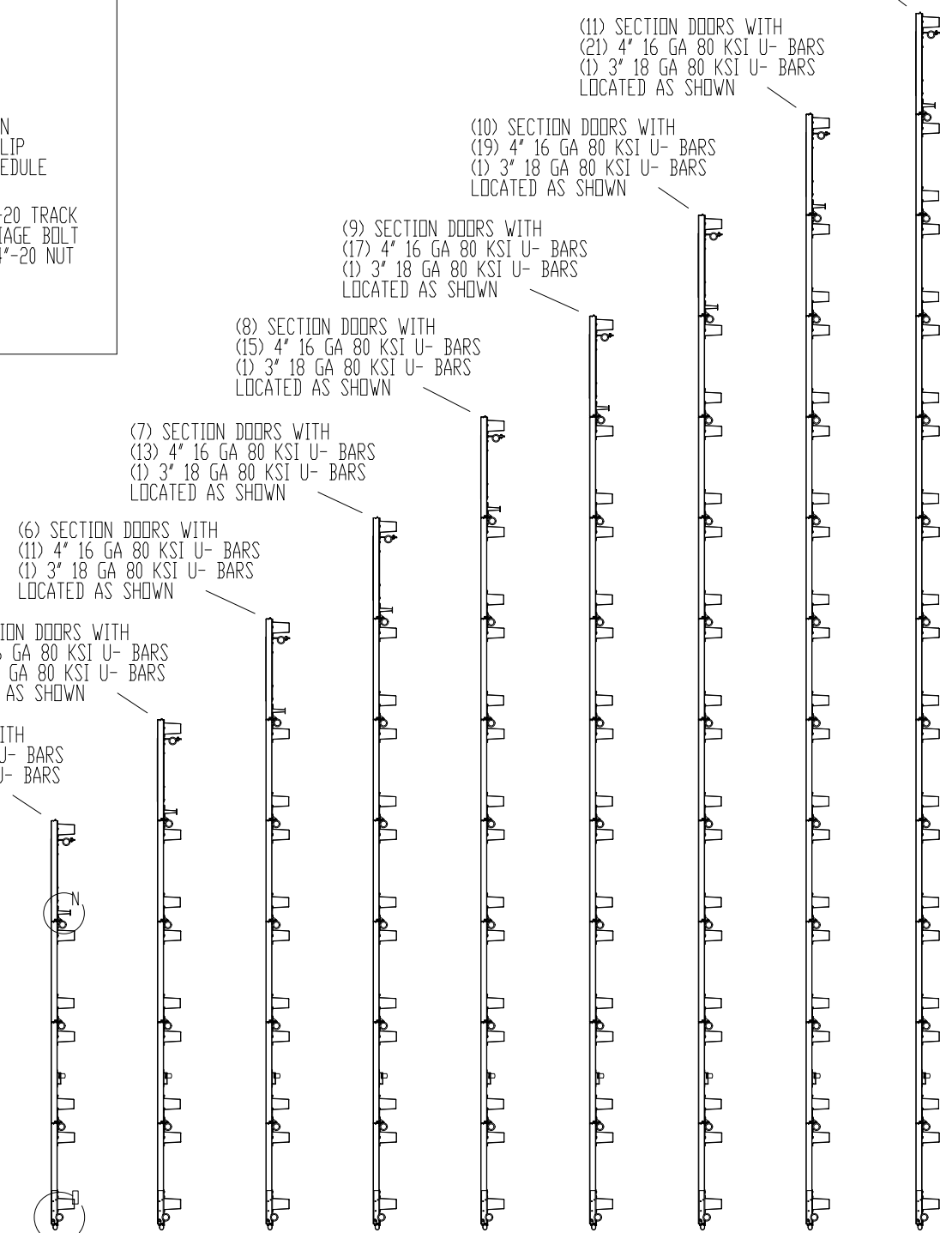
(8) SECTION DOORS WITH
(15) 4" 16 GA 80 KSI U- BARS
(1) 3" 18 GA 80 KSI U- BARS
LOCATED AS SHOWN

(9) SECTION DOORS WITH
(17) 4" 16 GA 80 KSI U- BARS
(1) 3" 18 GA 80 KSI U- BARS
LOCATED AS SHOWN

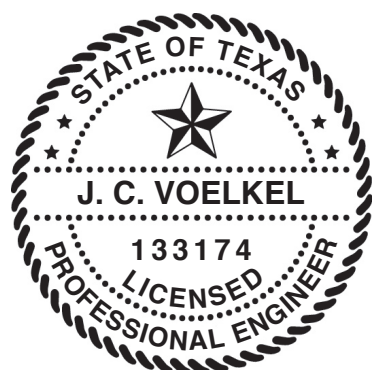
(10) SECTION DOORS WITH
(19) 4" 16 GA 80 KSI U- BARS
(1) 3" 18 GA 80 KSI U- BARS
LOCATED AS SHOWN

(11) SECTION DOORS WITH
(21) 4" 16 GA 80 KSI U- BARS
(1) 3" 18 GA 80 KSI U- BARS
LOCATED AS SHOWN

(12) SECTION DOORS WITH
(23) 4" 16 GA 80 KSI U- BARS
(1) 3" 18 GA 80 KSI U- BARS
LOCATED AS SHOWN



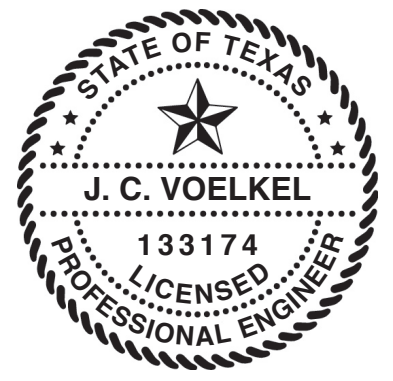
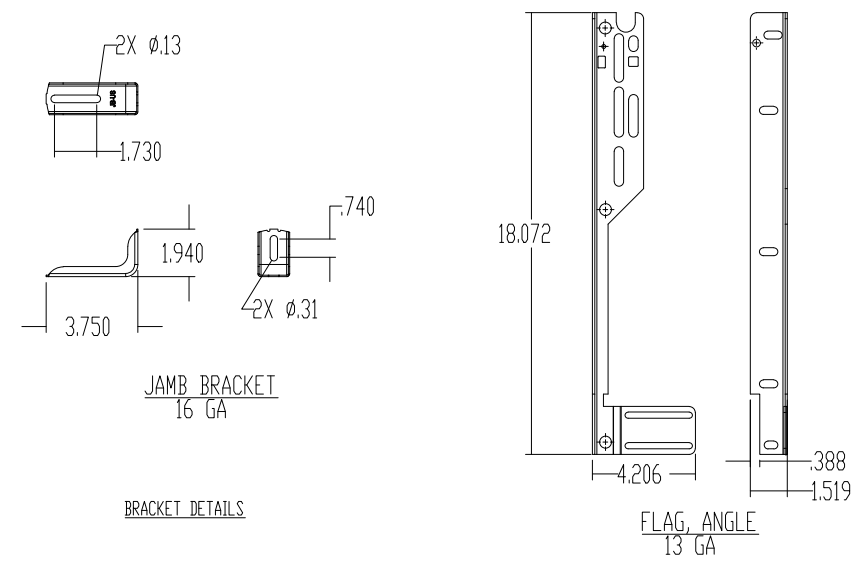
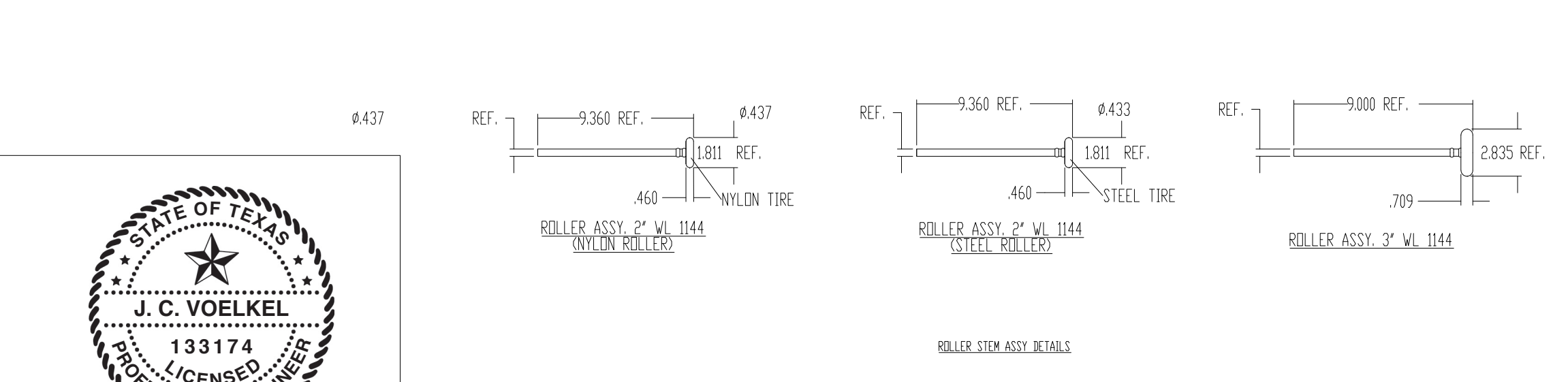
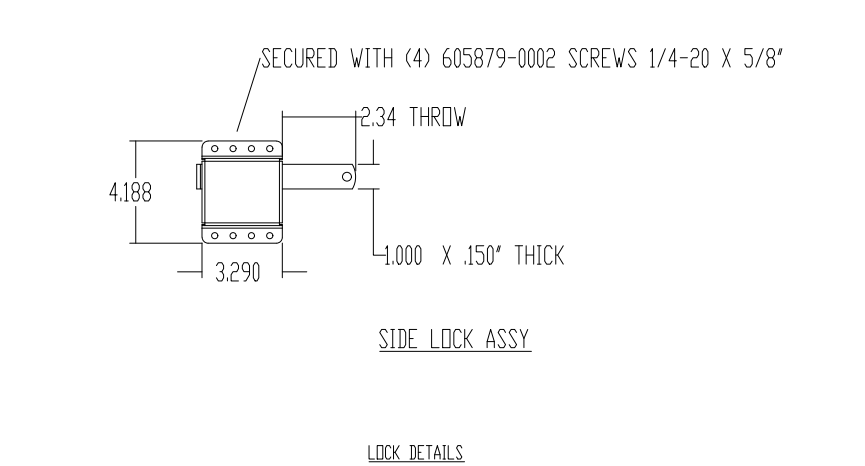
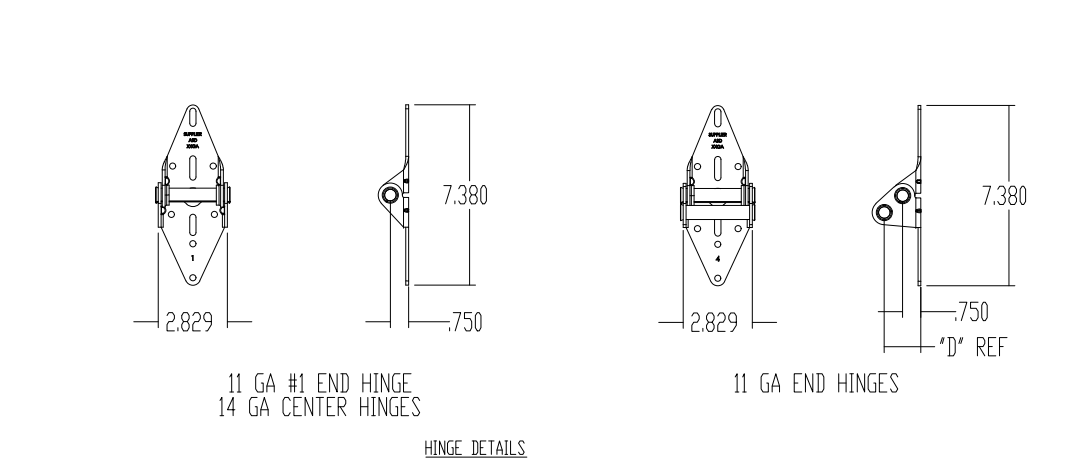
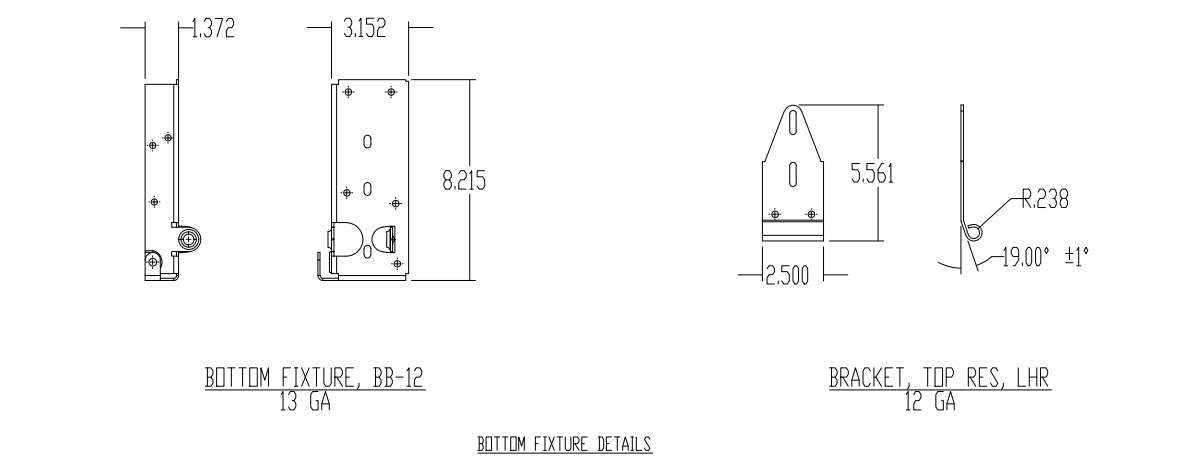
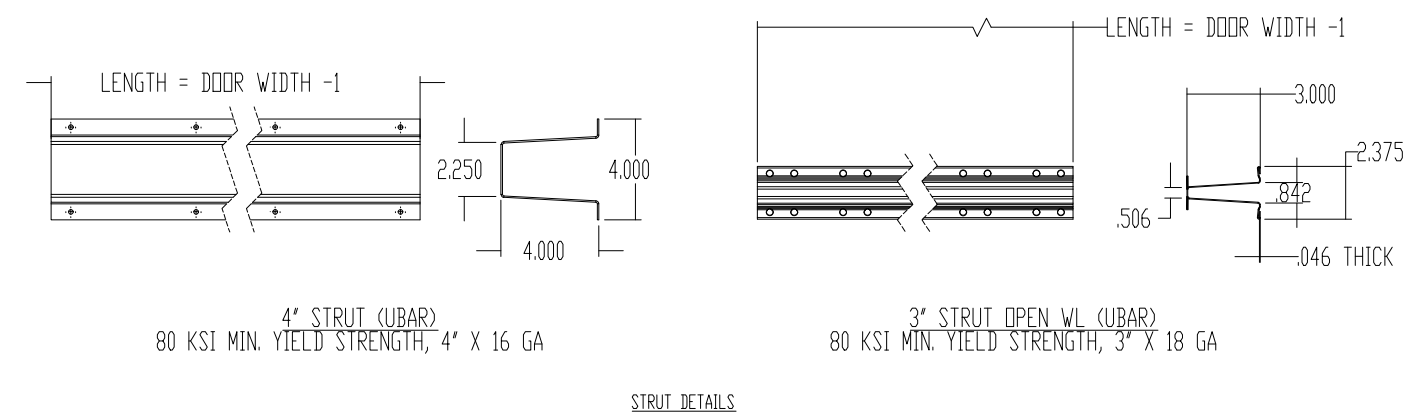
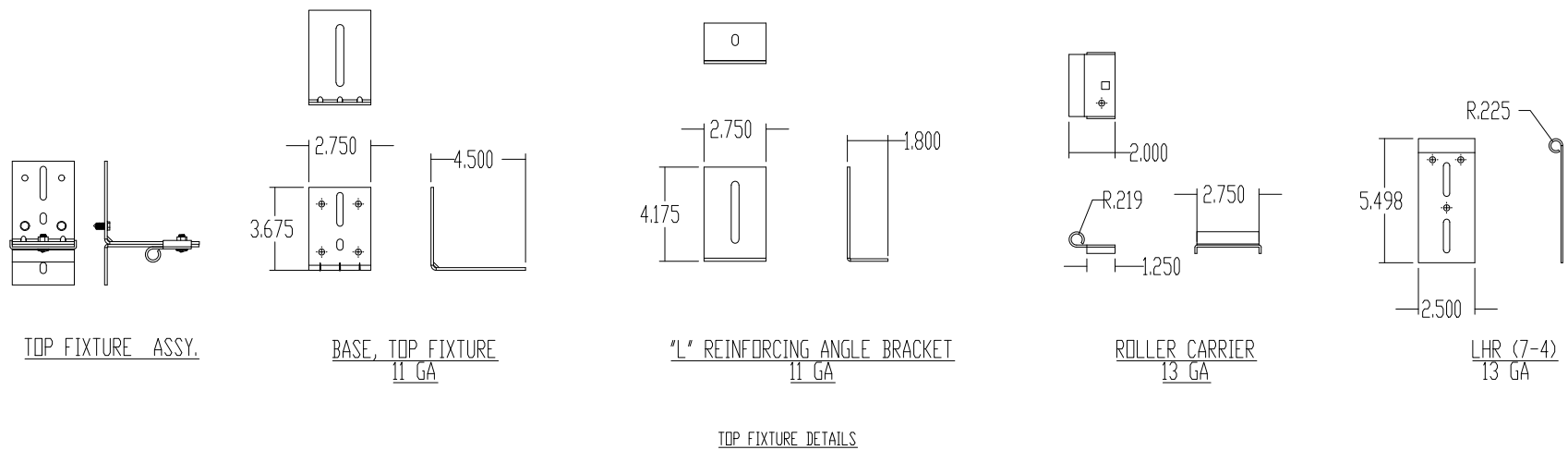
STRUT LOCATIONS SCALE 1:20



J. CHRISTIAN VOELKEL, PE
312 N. NEW WARRINGTON ROAD, UNIT 1A
PENSACOLA, FL
FL PE 82229 TX PE 133174
PROFESSIONAL ENGINEER'S SEAL PROVIDED ONLY FOR
VERIFICATION OF WINDLOAD CONSTRUCTION DETAILS.

THIRD ANGLE PROJECTION		UNLESS OTHERWISE SPECIFIED		APPROVALS DATE		PENSACOLA, FLORIDA	
	INTERPRET DIMS & TOLS PER ASME Y14.5M ALL DIMS ARE IN INCHES DO NOT SCALE DIMS CIRCLED WITH SYMBOL 'INSPECT' ARE CRITICAL TO QUALITY DESIGN FEATURES & MUST MEET APPLICABLE IN-PROCESS INSPECTION STANDARDS.	TOLERANCES: .X = ±.1 .XX = ±.03 .XXX = ±.010 ANGULAR = ±.5°		DRAWN E. CONRAD 8/28/18 CHECKED D. KORNISH - APPROVED - - MATERIAL - - FINISH - -	DESCRIPTION WINDLOAD MODELS 4600/4650/6600/8300/ 8500/8650/5150/5200/TM515/TM525, +46/-52PSF DADE COUNTY, 18'2" MAX WIDTH		SIZE DWG NO. D D-363476 REV A
		HOLES: < 0.251 = +0.04/-0.03 0.251-0.500 = +0.06/-0.03 > 0.500 = +0.08/-0.03		WINDLOAD SPECIFICATION OPTION CODE 2351		SCALE 1:12 UOM = EA SHEET 3 OF 5	
A DIVISION OF OVERHEAD DOOR CORP 3395 ADDISON DRIVE PENSACOLA, FLORIDA 32514 (850)-474-9890		ALL GEOMETRY GOVERNED BY 3D CAD DATABASE:					

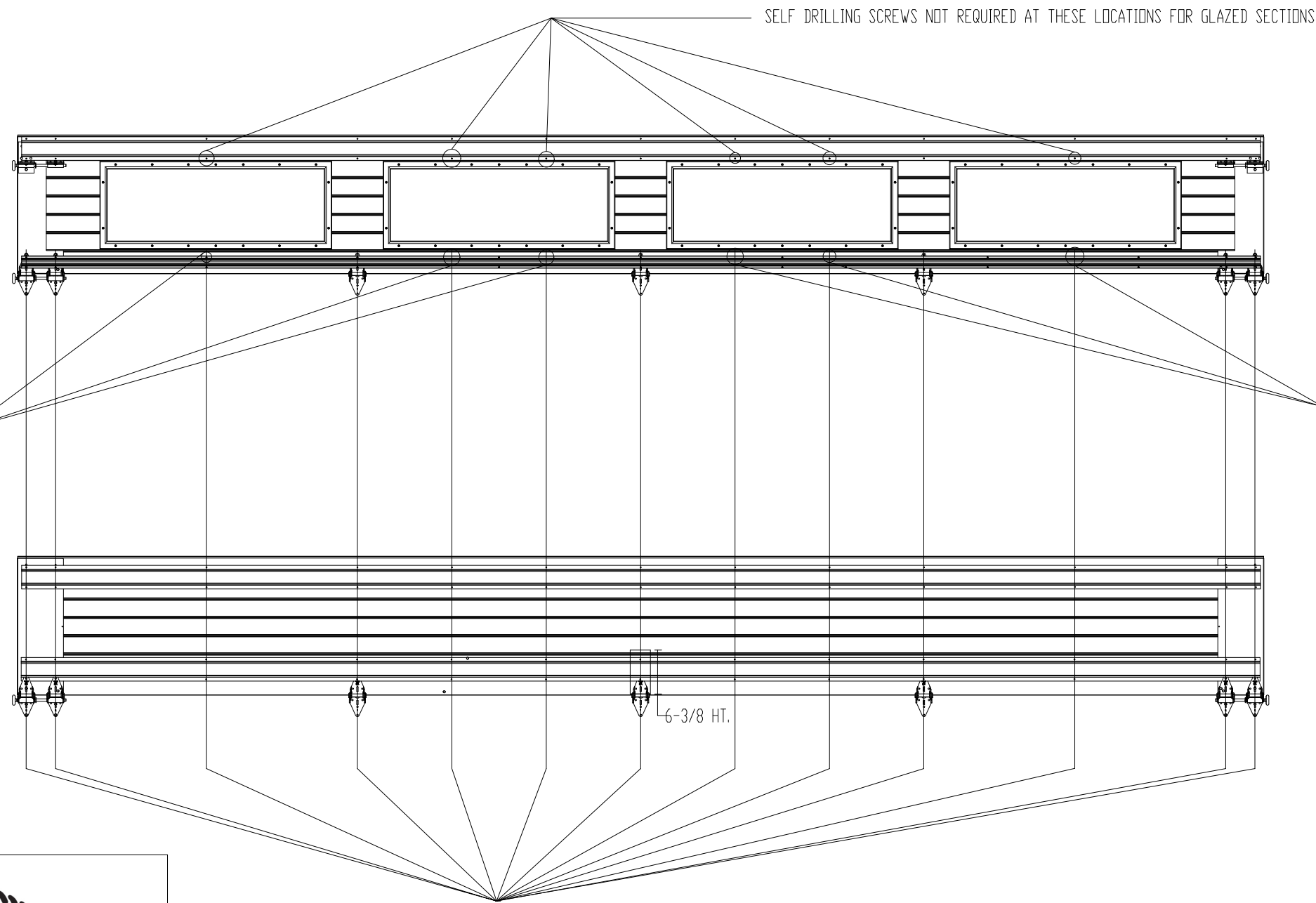
NOTES: (UNLESS OTHERWISE SPECIFIED)
 1. FOR DIMENSIONS AND NOTE REFERENCES, REFER TO INDIVIDUAL DRAWINGS.



J. CHRISTIAN VOELKEL, PE
 312 N. NEW WARRINGTON ROAD, UNIT 1A
 PENSACOLA, FL
 FL PE 82229 TX PE 133174
 PROFESSIONAL ENGINEER'S SEAL PROVIDED ONLY FOR
 VERIFICATION OF WINDLOAD CONSTRUCTION DETAILS.

	UNLESS OTHERWISE SPECIFIED INTERPRET DIMS & TOLS PER ASME Y14.5M ALL DIMS ARE IN INCHES DO NOT SCALE DIMS CIRCLED WITH SYMBOL ' (INSP-TBN) ARE CRITICAL TO QUALITY DESIGN FEATURES & MUST MEET APPLICABLE IN-PROCESS INSPECTION STANDARDS.	TOLERANCES: .X = ±.1 .XX = ±.03 .XXX = ±.010 ANGULAR = ±.5° HOLES: < Ø.251 = +.004/-0.003 Ø.251-Ø.500 = +.006/-0.003 > Ø.500 = +.008/-0.003 ALL GEOMETRY GOVERNED BY 3D CAD DATABASE:	APPROVALS DATE DRAWN E. CONRAD 8/28/18 CHECKED D. KORNISH APPROVED MATERIAL FINISH	PENSACOLA, FLORIDA DESCRIPTION WINDLOAD MODELS 4600/4650/6600/8300/ 8500/8650/5150/5200/TM515/TM525, +46/-52PSF DADE COUNTY, 18'2" MAX WIDTH
			WINDLOAD SPECIFICATION OPTION CODE 2351	SIZE DWG NO. D D-363476 REV A
SCALE 1:12 UOM = SHEET 4 OF 5				

STRUT FASTENER LOCATIONS

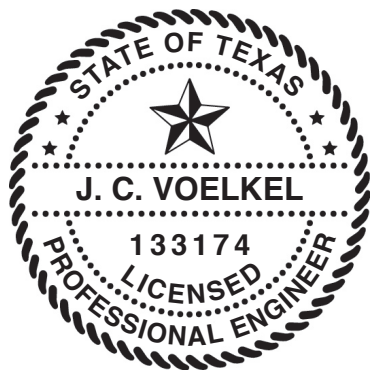


GLAZED SECTION

SELF DRILLING SCREWS NOT REQUIRED AT THESE LOCATIONS FOR GLAZED SECTIONS.

INTERMEDIATE OR BOTTOM SECTION

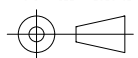
STRUTS ATTACHED WITH (2) 1/4-14x7/8" SELF DRILLING CRIMPTITE SCREWS AT EACH HINGE LOCATION AND AT EACH ADDITIONAL LOCATION SHOWN ABOVE.



J. CHRISTIAN VOELKEL, PE
 312 N. NEW WARRINGTON ROAD, UNIT 1A
 PENSACOLA, FL
 FL PE 82229 TX PE 133174

PROFESSIONAL ENGINEER'S SEAL PROVIDED ONLY FOR VERIFICATION OF WINDLOAD CONSTRUCTION DETAILS.

THIRD ANGLE PROJECTION



A DIVISION OF OVERHEAD DOOR CORP
 3395 ADDISON DRIVE
 PENSACOLA, FLORIDA 32514
 (850)-474-9890

UNLESS OTHERWISE SPECIFIED

INTERPRET DIMS & TOLS PER ASME Y14.5M
 ALL DIMS ARE IN INCHES
 DO NOT SCALE

DIMS CIRCLED WITH SYMBOL ' (INSP-TBN) ARE CRITICAL TO QUALITY DESIGN FEATURES & MUST MEET APPLICABLE IN-PROCESS INSPECTION STANDARDS.

TOLERANCES:
 .X = ±.1
 .XX = ±.03
 .XXX = ±.010
 ANGULAR = ±.5°

HOLE:
 < 0.251 = +.004/-0.003
 0.251-0.500 = +.006/-0.003
 > 0.500 = +.008/-0.003

ALL GEOMETRY GOVERNED BY 3D CAD DATABASE:

APPROVALS DATE

DRAWN	E. CONRAD	8/28/18
CHECKED	D. KORNISH	-
APPROVED	-	-
MATERIAL	-	-
FINISH	-	-

WINDLOAD SPECIFICATION OPTION CODE 2351

PENSACOLA, FLORIDA
 DESCRIPTION
 WINDLOAD MODELS 4600/4650/6600/8300/
 8500/8650/5150/5200/TM515/TM525, +46/-52PSF
 DADE COUNTY, 18'2" MAX WIDTH

SIZE DWG NO. REV
 D D-363476 A

SCALE 1:12 UOM = EA SHEET 5 OF 5