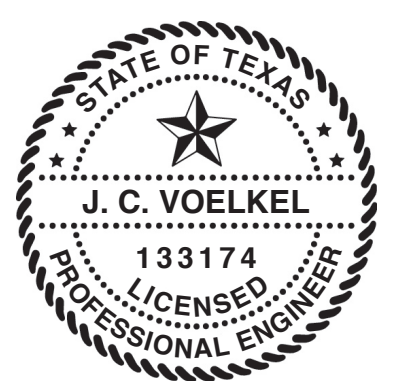
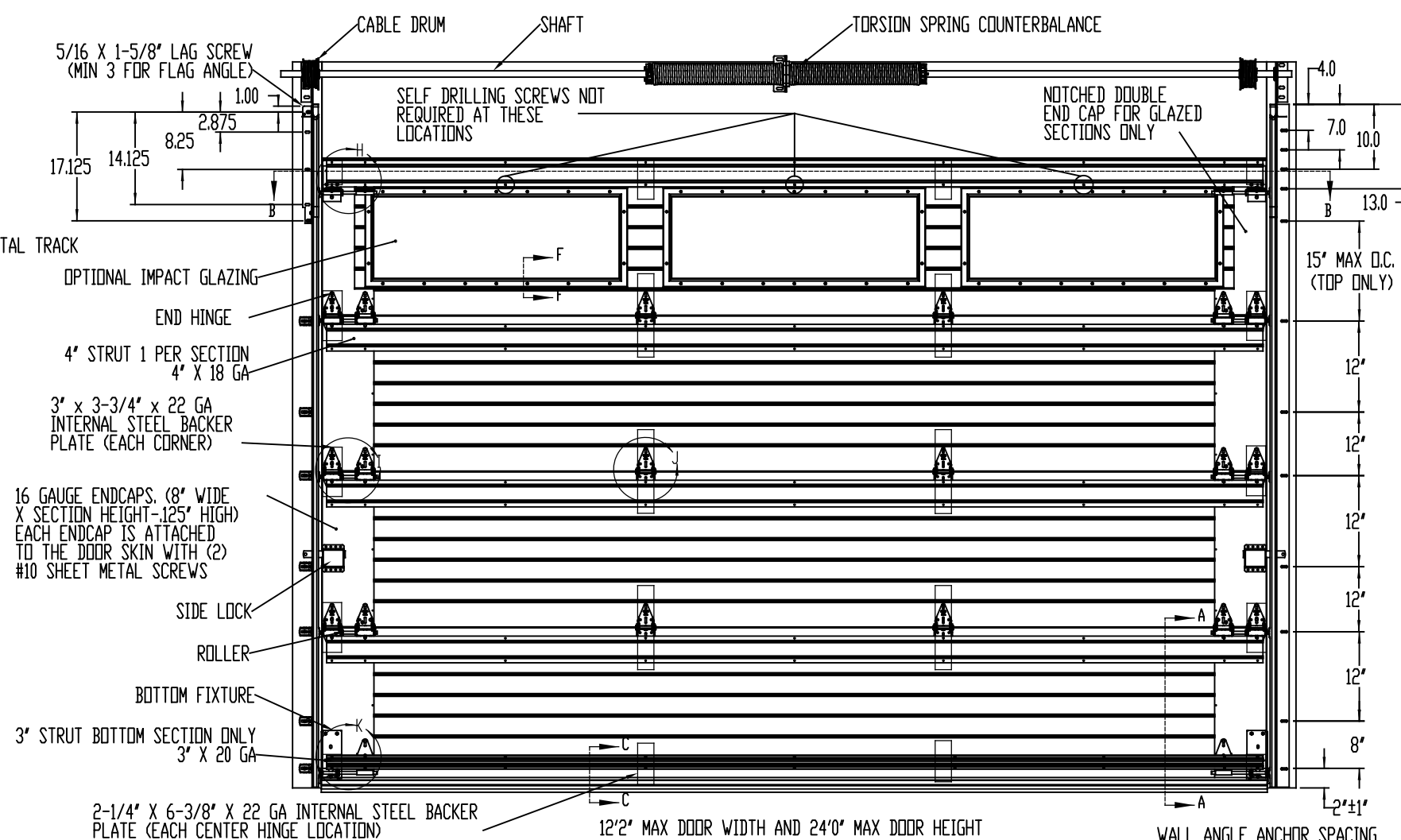
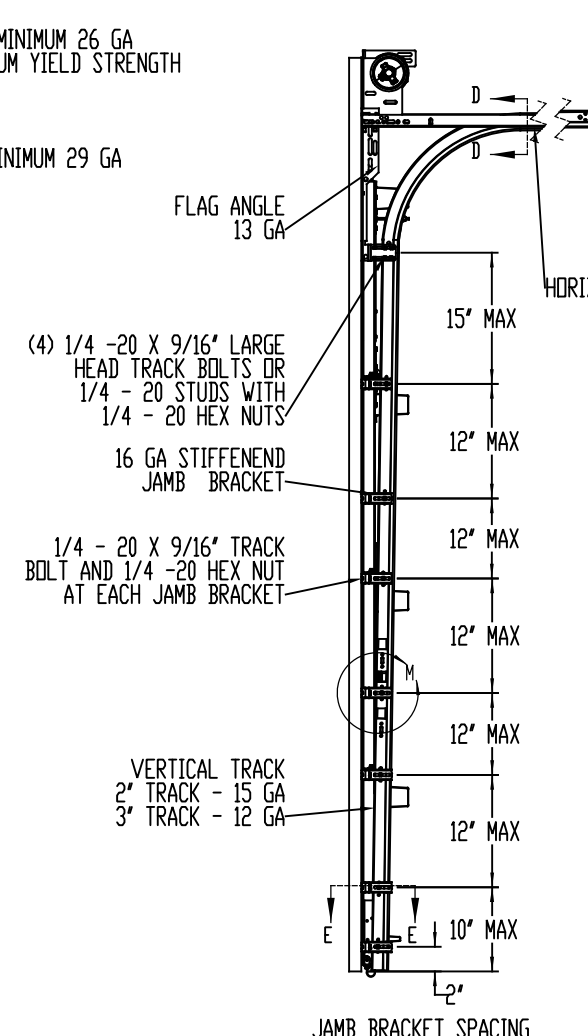
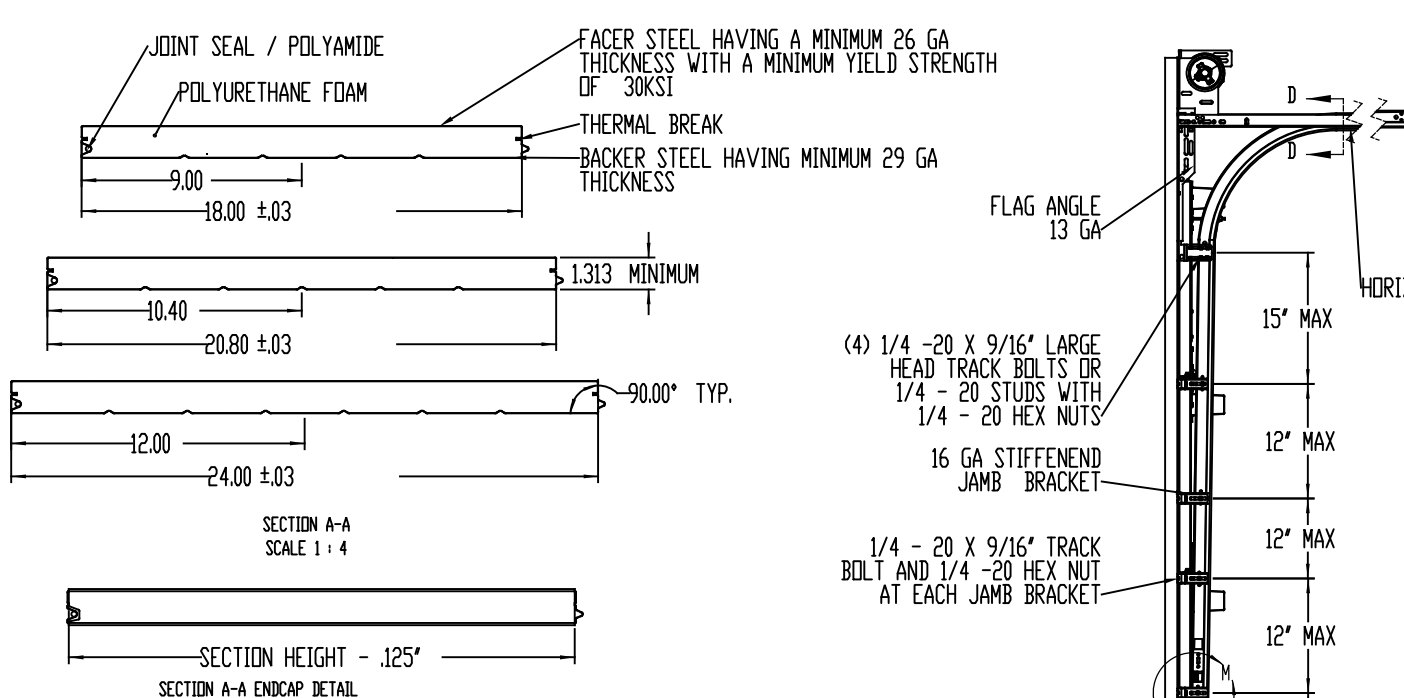
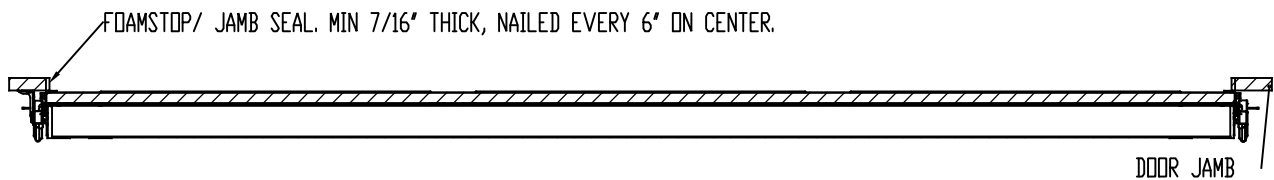


NOTES: (UNLESS OTHERWISE SPECIFIED)

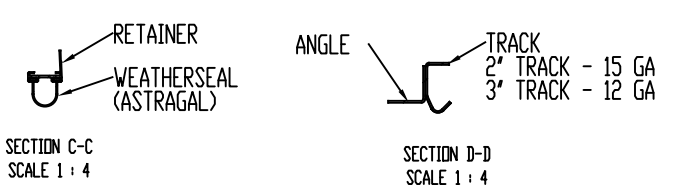
1. RATED DESIGN LOAD +46/-52 PSF.
2. SECTION HEIGHTS MAY VARY TO CREATE VARIOUS DOOR HEIGHTS, 24' MAXIMUM SECTION HEIGHT.
3. FOAMSTOP OR JAMB SEAL ON ALL JAMBS REQUIRED TO MEET NEGATIVE DESIGN PRESSURES.
4. TESTED IN ACCORDANCE WITH DADE COUNTY PROTOCOLS TAS 201-94, TAS 202-94, & TAS 203-94.
5. DOOR SKIN MUST BE 30,000 PSI MIN. YIELD STRENGTH.
6. JAMB LOAD CALCULATIONS:
 $(1/2 \text{ DOOR WIDTH}) \times (1 \text{ FT OF HEIGHT}) \times (\text{DESIGN PRESSURE})$
 $(6.08) \times (1 \text{ FOOT}) \times (46.00 \text{ AND } -52.00) = 279.68 / -316.16 \text{ LB}$
7. JAMB FASTENER REQUIREMENTS:
 $F_x = (1/2 \text{ DOOR WIDTH}) \times (1 \text{ FT OF HEIGHT}) \times (\text{DESIGN PRESSURE})$
 $F_x = 280 \text{ LBS.}$
8. DOOR SKIN MATERIAL SHALL BE GALVANIZED ACCORDING TO ASTM A-525 TO G40 MIN, WITH BAKED-ON PRIMER, AND BAKED-ON POLYESTER PAINT TOP COAT.
9. FOR ANCHORING INTO WOOD, USE ONE 5/16" LAG SCREW PER TRACK BRACKET WITH 1-1/2" EMBEDMENT INTO SOUTHERN PINE (G=0.55) OR BETTER.
10. WELD SLOT ON ANGLE 3/32" X 1" LONG ON 12" CENTERS. "IF WELDING MOUNTING OPTION IS CHOSEN."
11. LIFT UP MECHANISM-MANUAL, CHAIN LIFT, OR OPERATOR IS NOT PART OF THIS APPROVAL.
12. STANDARD LIFT, HIGH LIFT, VERTICAL LIFT, AND LOW HEADROOM TRACK IS AVAILABLE. FOR LOW HEADROOM LIFT CONDITIONS TOP BRACKET SHALL BE 13 GA LHR 7/4 TOP BRACKET WITH A MIN OF (3) 1/4 - 14 X 7/8" SELF DRILLING CRIMPTITE SCREWS IN LIEU OF THE BRACKET SHOWN ON DRAWING. U-BAR ON TOP SECTION SHALL BE INSTALLED ON TOP OF LHR TOP BRACKETS.
13. ATTACH STRUTS WITH (2) 1/4-14x7/8" SELF DRILLING CRIMPTITE SCREWS AT ALL HINGE LOCATIONS AND (2) BETWEEN EACH INTERMEDIATE HINGE.
14. KEY LOCK, OR SIDE LOCK REQUIRED.
15. IMPACT RESISTANT GLAZING OPTION- IMPACT RESISTANT GLAZING SYSTEM MAY BE INSTALLED IN TOP OR INTERMEDIATE SECTIONS. GLAZING SHALL BE 1/4" POLYCARBONATE. FASTENED WITH # 8 X 1" SMS. SEE DETAIL F-F ON SHEET 2 FOR ASSEMBLY DETAILS. MAXIMUM OF ONE GLAZED SECTION.
16. THE DESIGN OF THE SUPPORTING STRUCTURAL ELEMENTS SHALL BE THE RESPONSIBILITY OF THE PROFESSIONAL OF RECORD FOR THE BUILDING OR STRUCTURE AND IN ACCORDANCE WITH CURRENT BUILDING CODES FOR THE LOADS LISTED ON THIS DRAWING.
17. LOUVER OPTION - LOUVERS MAY BE INSTALLED IN DOOR IF THE AREA OF EACH LOUVER DOES NOT EXCEED 60 IN². DOOR VENTS LARGER THAN 60 IN² MUST BE TESTED FOR IMPACT.
18. A 2-1/4" X 6-3/8" X 22 GA BACKER PLATE IS TO BE LOCATED AT EVERY CENTER HINGE AND 3" X 3-3/4" X 22 GA BACKER PLATE AT EACH END HINGE LOCATION. EACH IS ADHERED TO THE INTERIOR OF THE SECTION BACKER STEEL.

THE DOORS ARE DESIGNED AND MANUFACTURED TO COMPLY WITH THE 2018 IRC AND THE 2018 IBC.

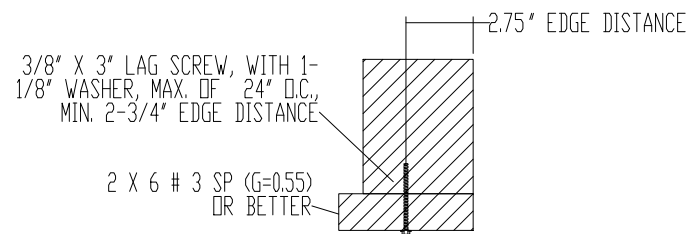
REVISIONS				
ER	REV	DESCRIPTION	DATE	APVL
ER	POO	NEW DRAWING	8/28/18	ESC
32442	A	ADDED IRC/IBC NOTE	8/26/20	TLC



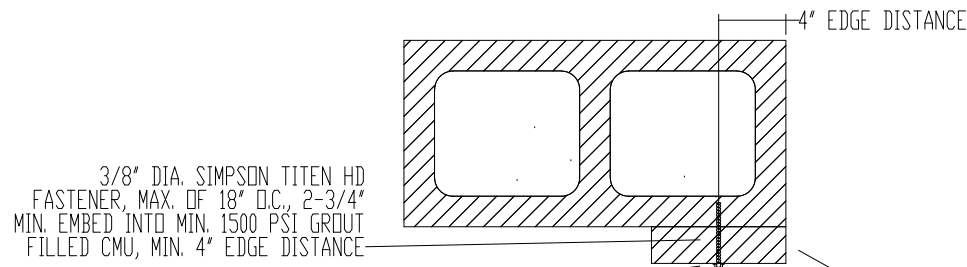
J. CHRISTIAN VOELKEL, PE
 312 N. NEW WARRINGTON ROAD, UNIT 1A
 - PENSACOLA, FL
 FL PE 82229 TX PE 133174
 PROFESSIONAL ENGINEER'S SEAL PROVIDED ONLY FOR VERIFICATION OF WINDLOAD CONSTRUCTION DETAILS.



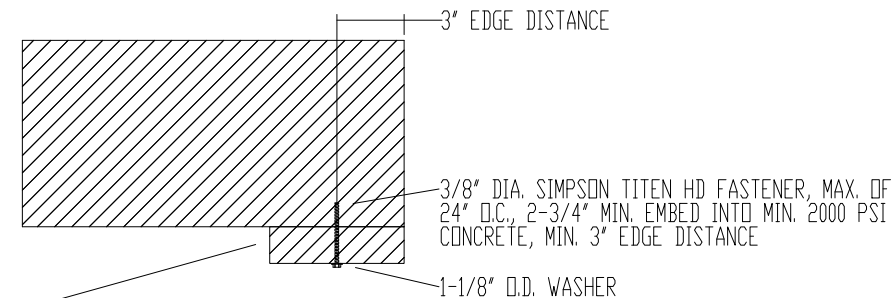
THIRD ANGLE PROJECTION		UNLESS OTHERWISE SPECIFIED		APPROVALS		DATE			
INTERPRET DIMS & TOLS PER ASME Y14.5M ALL DIMS ARE IN INCHES DO NOT SCALE DIMS CIRCLED WITH SYMBOL ' (INSP-TBN) ARE CRITICAL TO QUALITY DESIGN FEATURES & MUST MEET APPLICABLE IN-PROCESS INSPECTION STANDARDS.	TOLERANCES: .X = ±.1 .XX = ±.03 .XXX = ±.010 ANGULAR = ±.5° HOLES: < Ø.251 = +.004/-0.003 Ø.251-Ø.500 = +.006/-0.003 > Ø.500 = +.008/-0.003 ALL GEOMETRY GOVERNED BY 3D CAD DATABASE.	DRAWN	E. CONRAD	8/28/18	Wayne Dalton GARAGE DOORS PENSACOLA, FLORIDA	DESCRIPTION WINDLOAD MODELS 4600/4650/6600/8300/8500/8650/5150/5200/TM515/TM525, +46/-52PSF DADE COUNTY, 12'2" MAX WIDTH	SIZE DWG NO. D D-363474	REV A	
		CHECKED	D. KORNISH	-					WINDLOAD SPECIFICATION OPTION CODE 2311
A DIVISION OF OVERHEAD DOOR CORP 3395 ADDISON DRIVE PENSACOLA, FLORIDA 32514 (850)-474-9890									



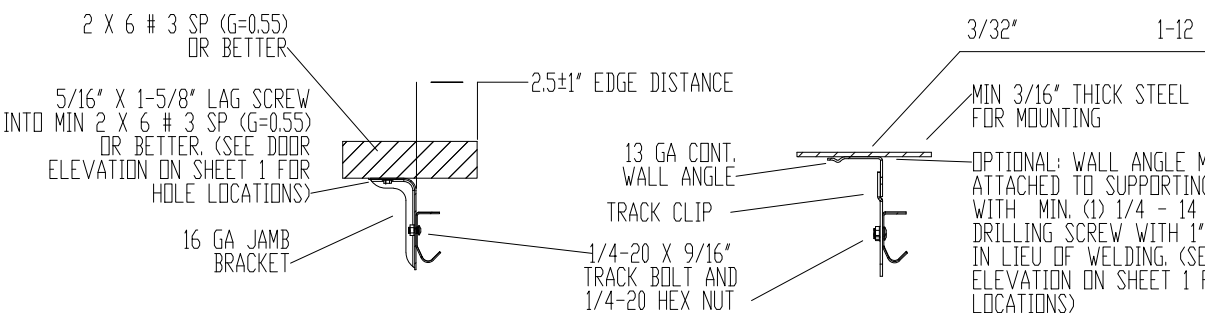
WOOD MOUNTED TO # 3 SOUTHERN PINE SUBSTRATE



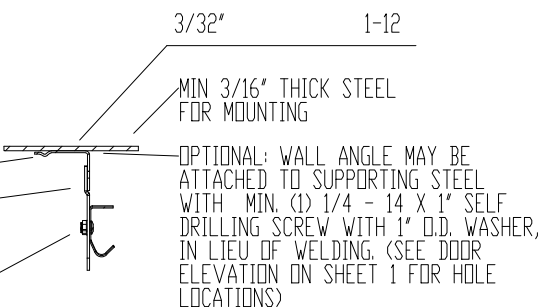
WOOD MOUNTED TO GROUT FILLED MASONRY BLOCK DETAIL



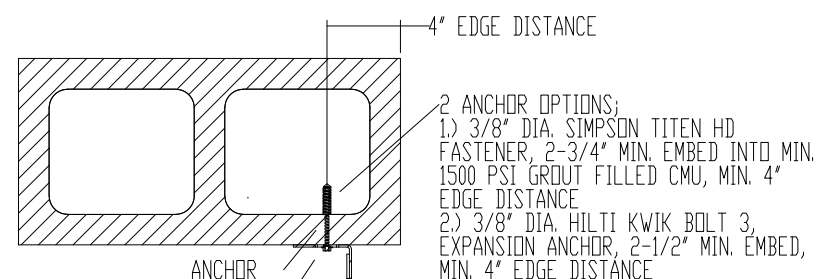
WOOD MOUNTED TO 2000 PSI CONCRETE DETAIL



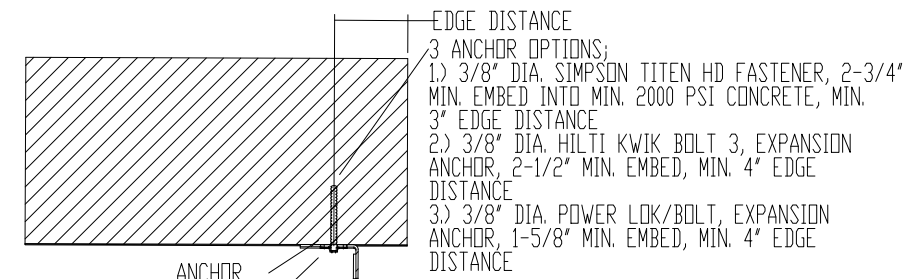
MOUNTING TO WOOD JAMB DETAIL



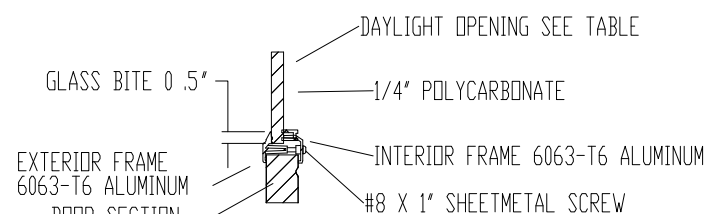
MOUNTING TO STEEL JAMB DETAIL



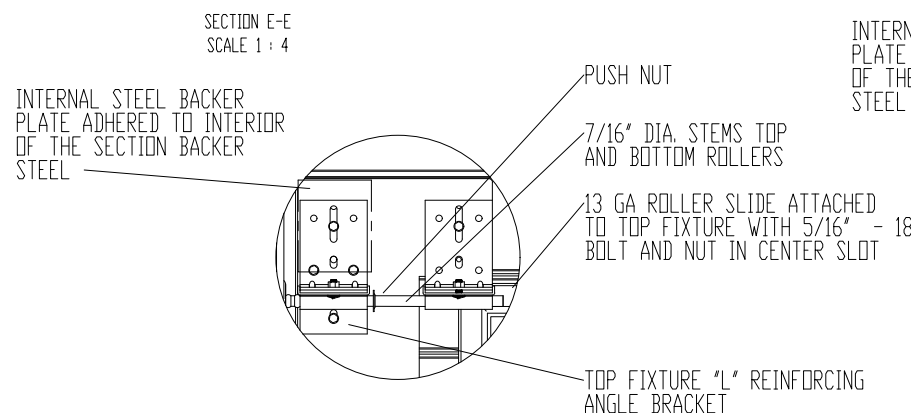
MOUNTING TO GROUT FILLED MASONRY BLOCK DETAIL



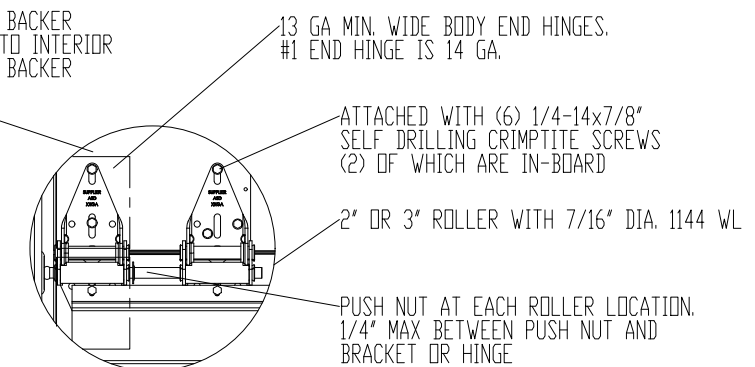
MOUNTING TO 2000 PSI CONCRETE DETAIL



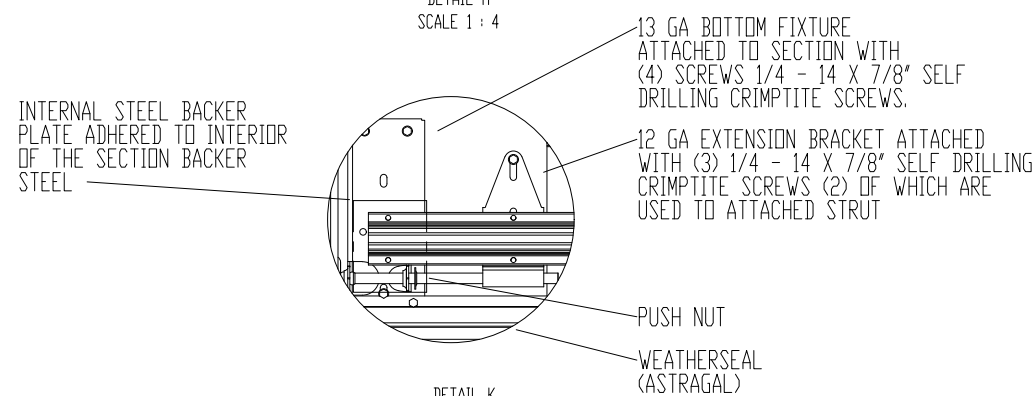
SECTION F-F SCALE 1:4



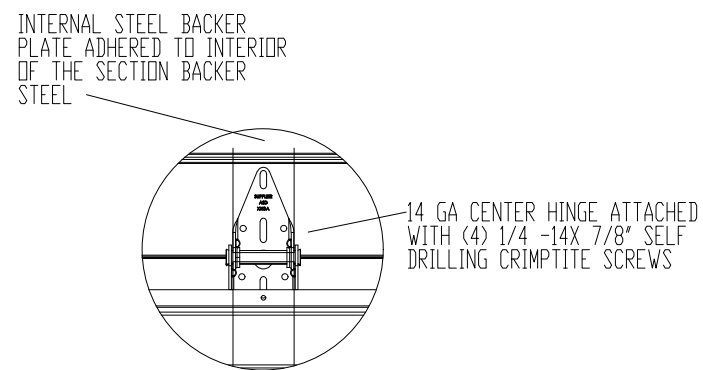
DETAIL H SCALE 1:4



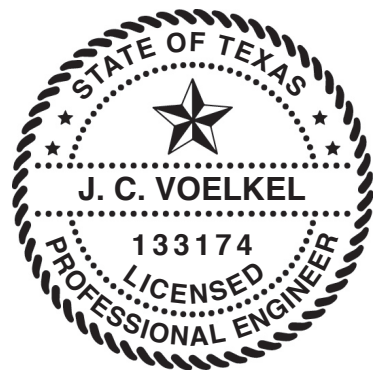
DETAIL I SCALE 1:4



DETAIL K SCALE 1:4



DETAIL J SCALE 1:4

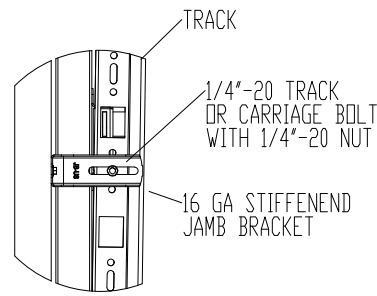


J. CHRISTIAN VOELKEL, PE
312 N. NEW WARRINGTON ROAD, UNIT 1A
PENSACOLA, FL
FL PE 82229 TX PE 133174

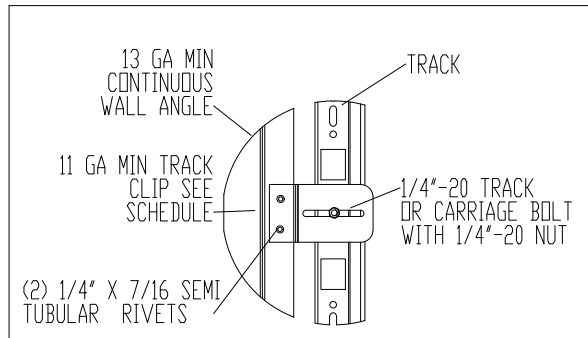
PROFESSIONAL ENGINEER'S SEAL PROVIDED ONLY FOR VERIFICATION OF WINDLOAD CONSTRUCTION DETAILS.

THIRD ANGLE PROJECTION		UNLESS OTHERWISE SPECIFIED		APPROVALS DATE		PENSACOLA, FLORIDA	
	INTERPRET DIMS & TOLS PER ASME Y14.5M ALL DIMS ARE IN INCHES DO NOT SCALE DIMS CIRCLED WITH SYMBOL 'INSPECTION' ARE CRITICAL TO QUALITY DESIGN FEATURES & MUST MEET APPLICABLE IN-PROCESS INSPECTION STANDARDS.	TOLERANCES: .X = ±.1 .XX = ±.03 .XXX = ±.010 ANGULAR = ±.5° HOLES: < 0.251 = +.004/-0.003 0.251-0.500 = +.006/-0.003 > 0.500 = +.008/-0.003	DRAWN E. CONRAD 8/28/18	DESCRIPTION WINDLOAD MODELS 4600/4650/6600/8300/8500/8650/5150/5200/TMS15/TMS25, +46/-52PSF DADE COUNTY, 12'2" MAX WIDTH	SIZE DWG NO. D-363474	REV A	SCALE 1:12 UOM = EA SHEET 2 OF 4
			CHECKED D. KORNISH -				
A DIVISION OF OVERHEAD DOOR CORP 3395 ADDISON DRIVE PENSACOLA, FLORIDA 32514 (850)-474-9890		ALL GEOMETRY GOVERNED BY 3D CAD DATABASE:					

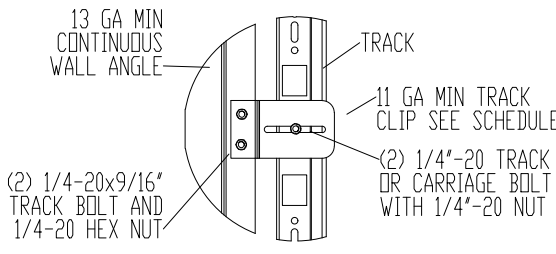
NOTES: (UNLESS OTHERWISE SPECIFIED)
 1. ONE 4" STRUT PER SECTION, AND ONE 3" STRUT PER BOTTOM SECTION, ATTACHED WITH 1/4"-14X7/8" SELF DRILLING CRIMPTITE SCREWS.



TYPICAL TRACK AND JAMB FASTENERS DETAIL

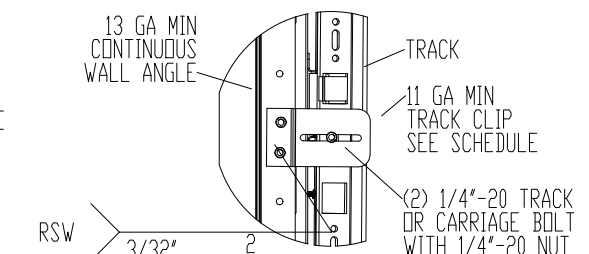


TYPICAL TRACK CLIP RIVETING DETAIL

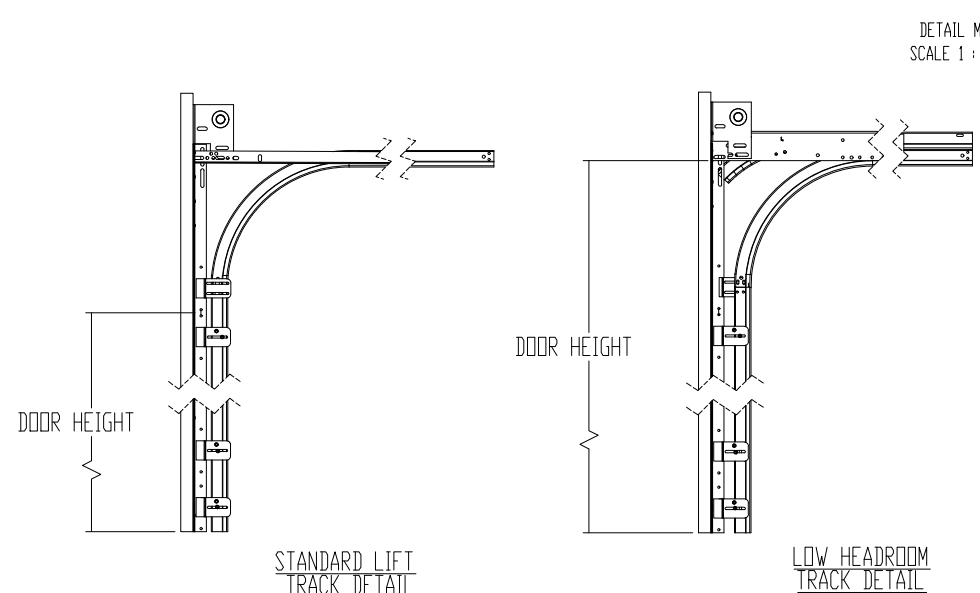


TYPICAL TRACK CLIP BOLTING DETAIL

OPTIONAL WALL ANGLE TRACK



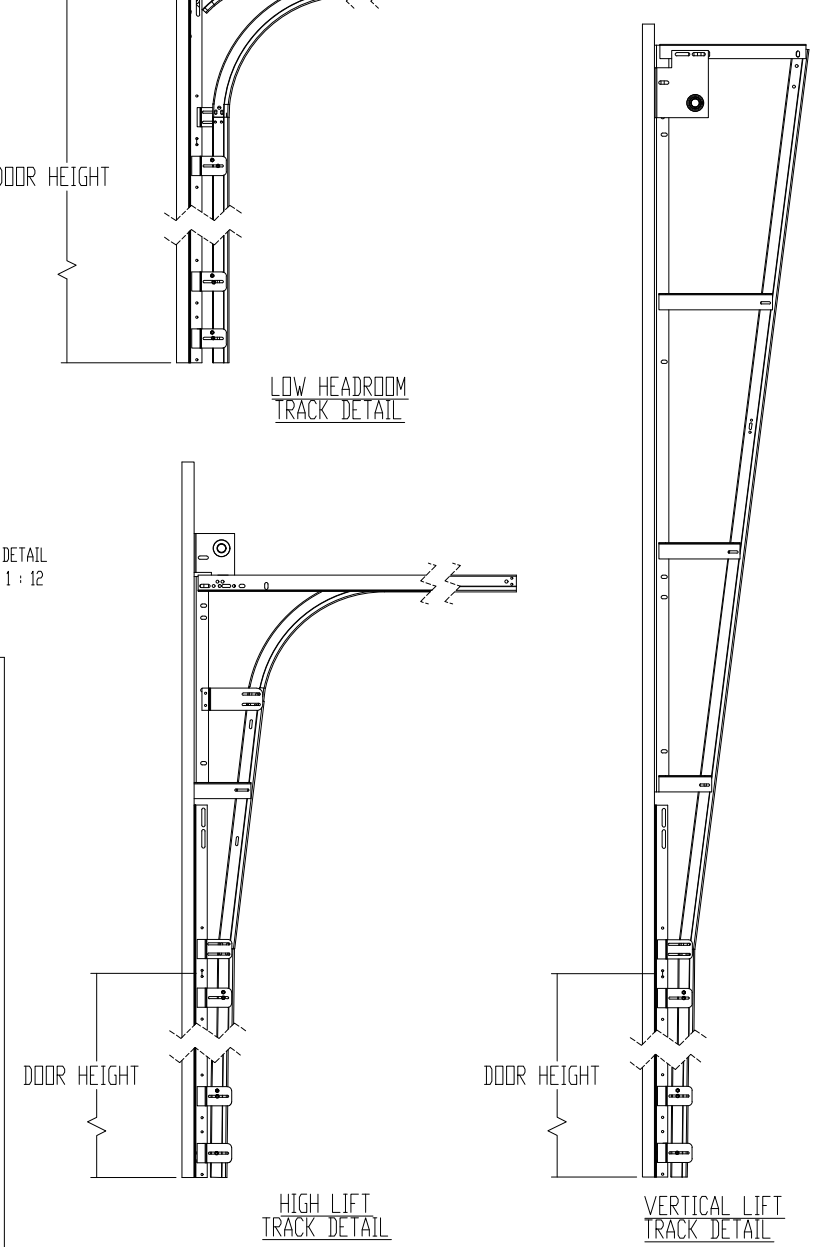
TYPICAL TRACK CLIP WELDING DETAIL



STANDARD LIFT TRACK DETAIL

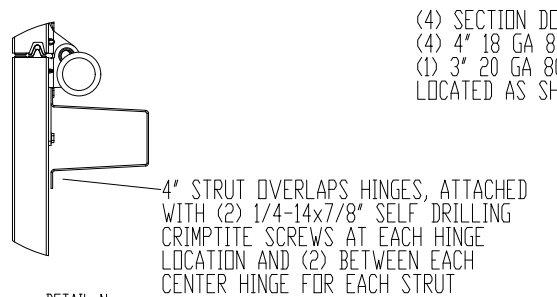
LOW HEADROOM TRACK DETAIL

TRACK DETAIL SCALE 1:12

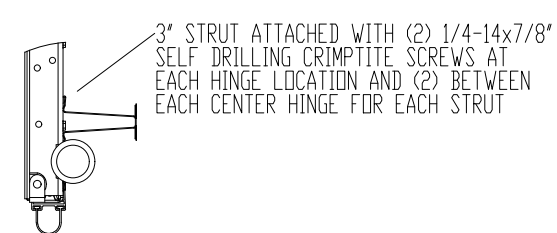


HIGH LIFT TRACK DETAIL

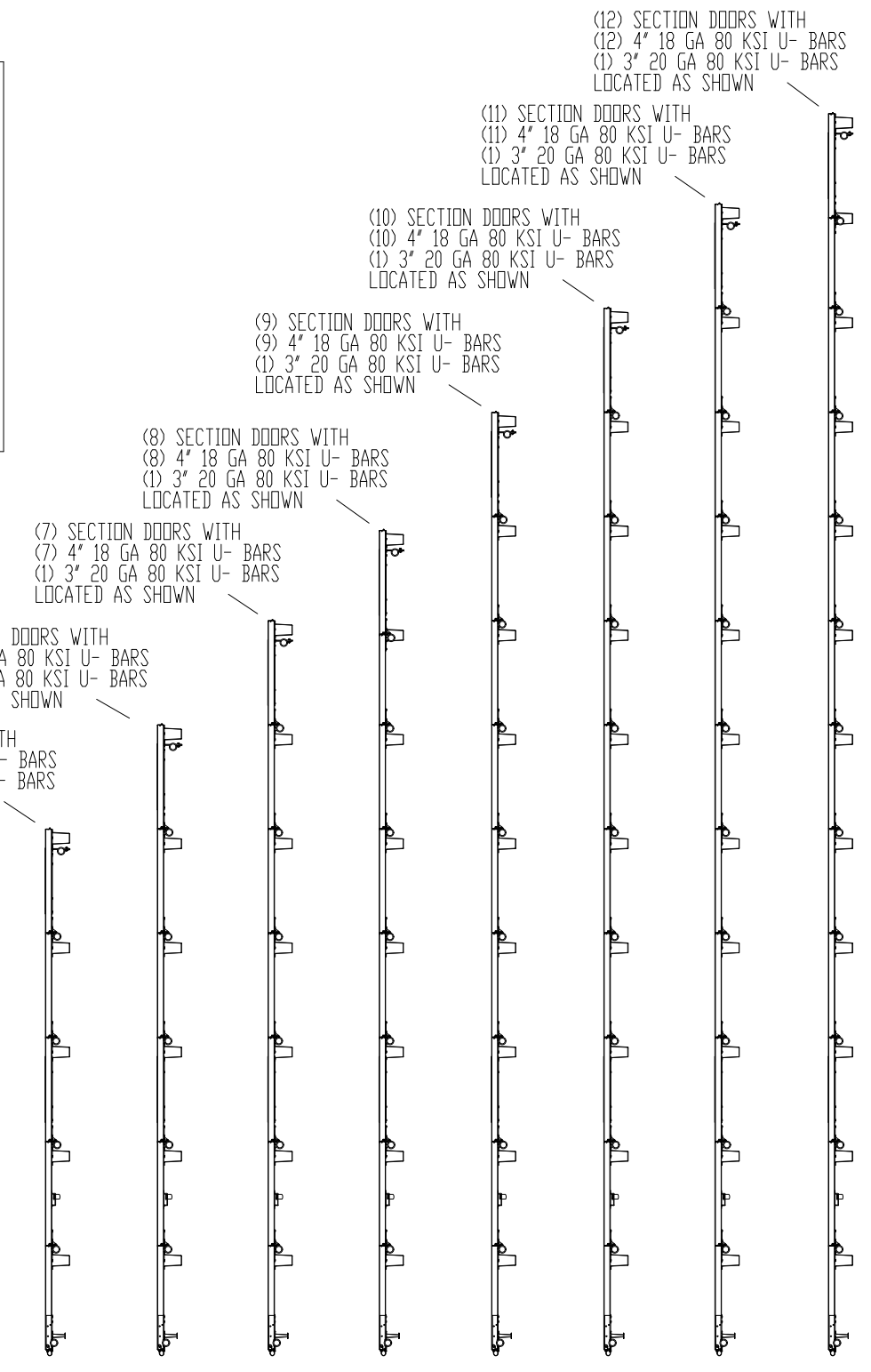
VERTICAL LIFT TRACK DETAIL



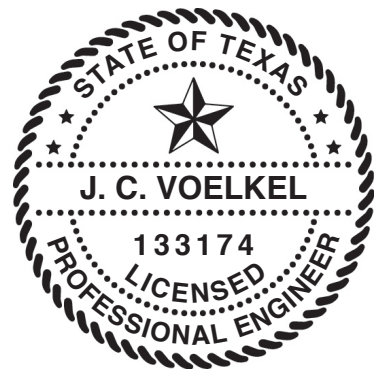
DETAIL N SCALE 1:4



DETAIL D SCALE 1:4



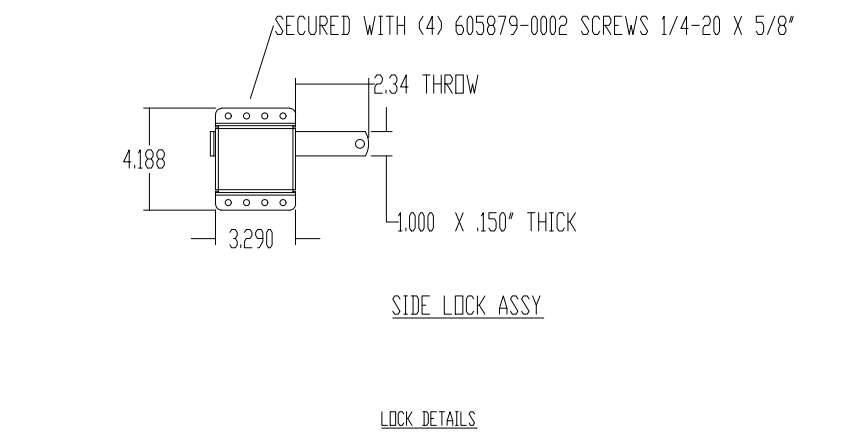
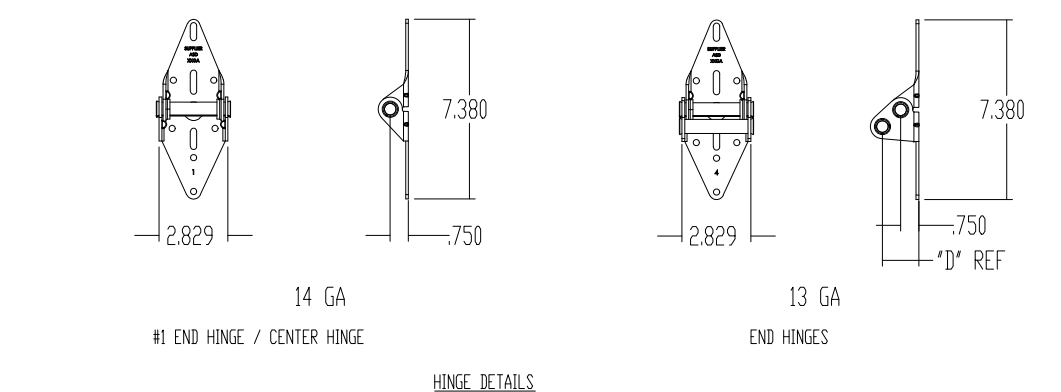
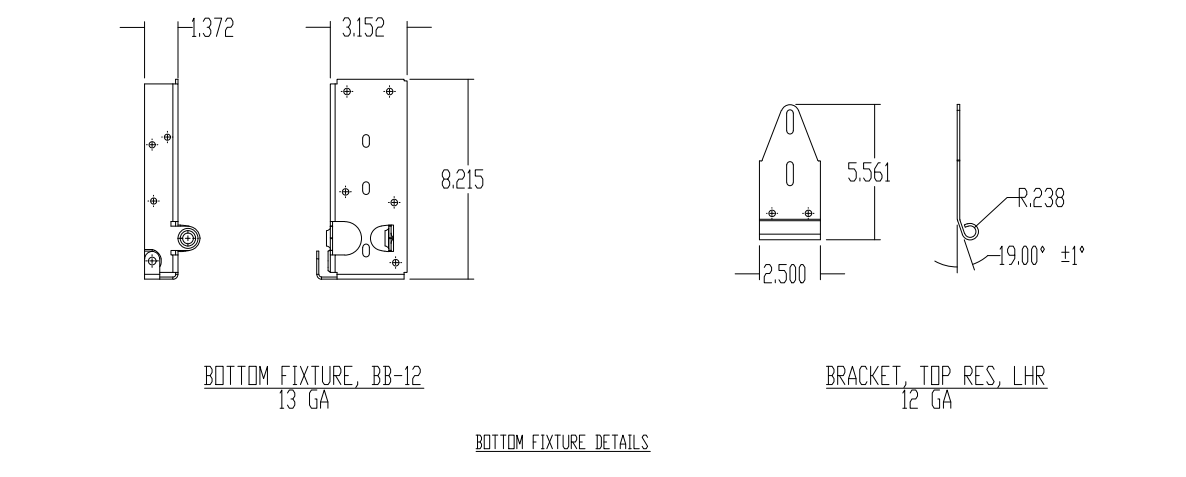
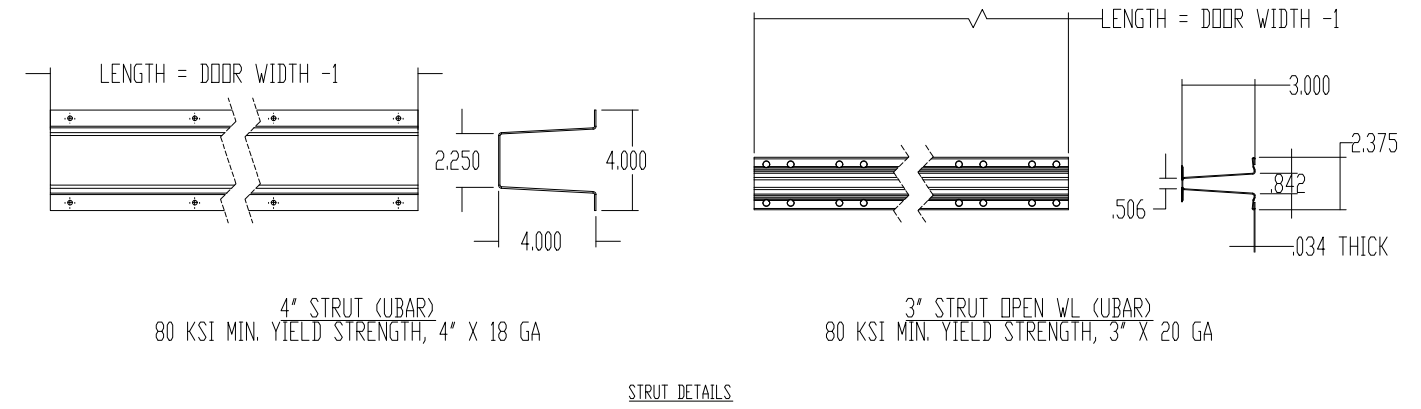
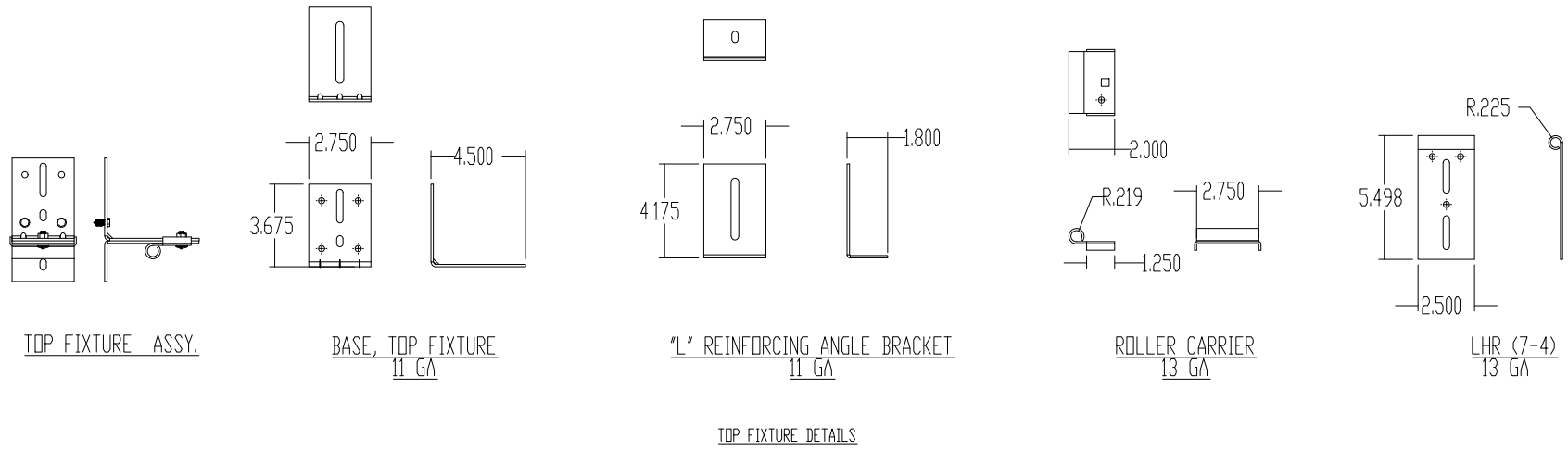
STRUT LOCATIONS SCALE 1:20



J. CHRISTIAN VOELKEL, PE
 312 N. NEW WARRINGTON ROAD, UNIT 1A
 PENSACOLA, FL
 FL PE 82229 TX PE 133174
 PROFESSIONAL ENGINEER'S SEAL PROVIDED ONLY FOR VERIFICATION OF WINDLOAD CONSTRUCTION DETAILS.

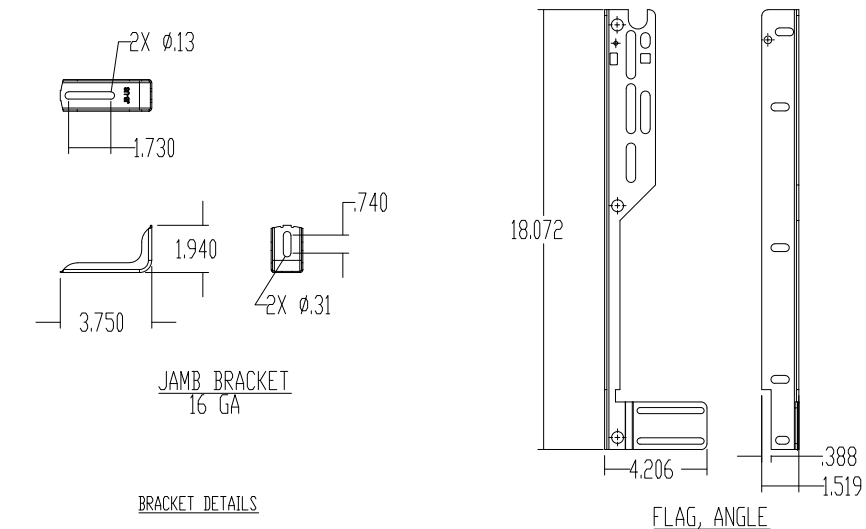
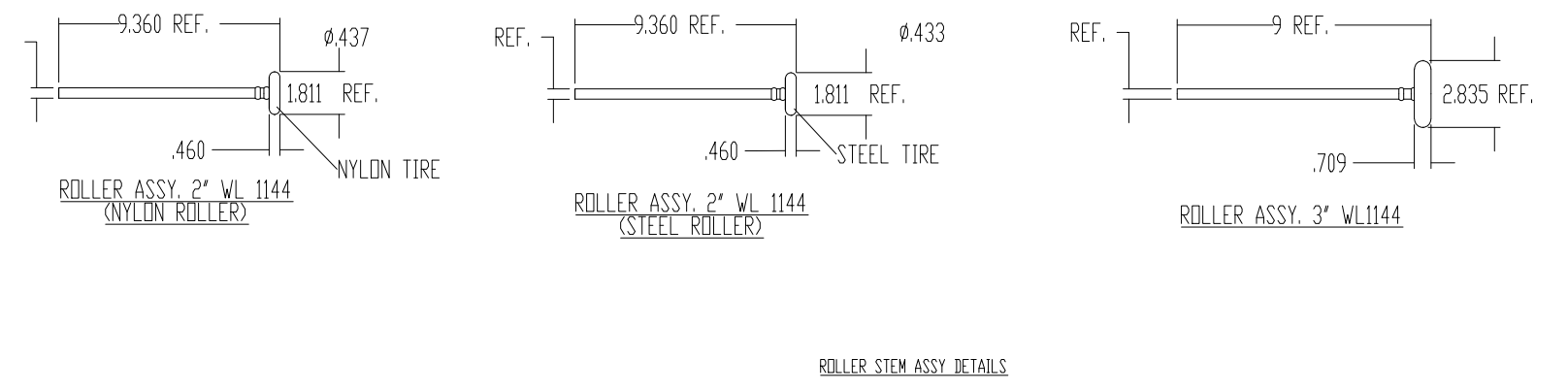
THIRD ANGLE PROJECTION 	UNLESS OTHERWISE SPECIFIED INTERPRET DIMS & TOLS PER ASME Y14.5M ALL DIMS ARE IN INCHES DO NOT SCALE DIMS CIRCLED WITH SYMBOL ' (INSP-IBN) ARE CRITICAL TO QUALITY DESIGN FEATURES & MUST MEET APPLICABLE IN-PROCESS INSPECTION STANDARDS.	TOLERANCES: .X = ±.1 .XX = ±.03 .XXX = ±.010 ANGULAR = ±.5°	APPROVALS DATE DRAWN E. CONRAD 8/28/18 CHECKED D. KORNISH - APPROVED - - MATERIAL - - FINISH - -	PENSACOLA, FLORIDA DESCRIPTION WINDLOAD MODELS 4600/4650/6600/8300/8500/8650/5150/5200/TM515/TM525, +46/-52PSF DADE COUNTY, 12'2" MAX WIDTH
		HOLES: < 0.251 = +.004/-0.03 0.251-0.500 = +.006/-0.03 > 0.500 = +.008/-0.03 ALL GEOMETRY GOVERNED BY 3D CAD DATABASE:	WINDLOAD SPECIFICATION OPTION CODE 2311	SIZE DWG NO. D D-363474
A DIVISION OF OVERHEAD DOOR CORP 3395 ADDISON DRIVE PENSACOLA, FLORIDA 32514 (850)-474-9890	SCALE 1:12 UDM = EA SHEET 3 OF 4			

NOTES: (UNLESS OTHERWISE SPECIFIED)
 1. FOR DIMENSIONS AND NOTE REFERENCES, REFER TO INDIVIDUAL DRAWINGS.



STATE OF TEXAS
 J. C. VOELKEL
 133174
 LICENSED PROFESSIONAL ENGINEER

J. CHRISTIAN VOELKEL, PE
 312 N. NEW WARRINGTON ROAD, UNIT 1A
 PENSACOLA, FL
 FL PE 82229 TX PE 133174
 PROFESSIONAL ENGINEER'S SEAL PROVIDED ONLY FOR
 VERIFICATION OF WINDLOAD CONSTRUCTION DETAILS.



	UNLESS OTHERWISE SPECIFIED INTERPRET DIMS & TOLS PER ASME Y14.5M ALL DIMS ARE IN INCHES DO NOT SCALE DIMS CIRCLED WITH SYMBOL ' (INSP-IBN) ARE CRITICAL TO QUALITY DESIGN FEATURES & MUST MEET APPLICABLE IN-PROCESS INSPECTION STANDARDS.	TOLERANCES: .X = ±.1 .XX = ±.03 .XXX = ±.010 ANGULAR = ±.5° HOLES: < Ø.251 = +.004/-0.003 Ø.251-Ø.500 = +.006/-0.003 > Ø.500 = +.008/-0.003 ALL GEOMETRY GOVERNED BY 3D CAD DATABASE:	APPROVALS DATE DRAWN E. CONRAD 8/28/18 CHECKED D. KORNISH APPROVED MATERIAL FINISH	PENSACOLA, FLORIDA DESCRIPTION WINDLOAD MODELS 4600/4650/6600/8300/ 8500/8650/5150/5200/TM515/TM525, +46/-52PSF DADE COUNTY, 12'2" MAX WIDTH
			WINDLOAD SPECIFICATION OPTION CODE 2311	SIZE DWG NO. D D-363474 REV A
SCALE 1:12 UOM = SHEET 4 OF 4				