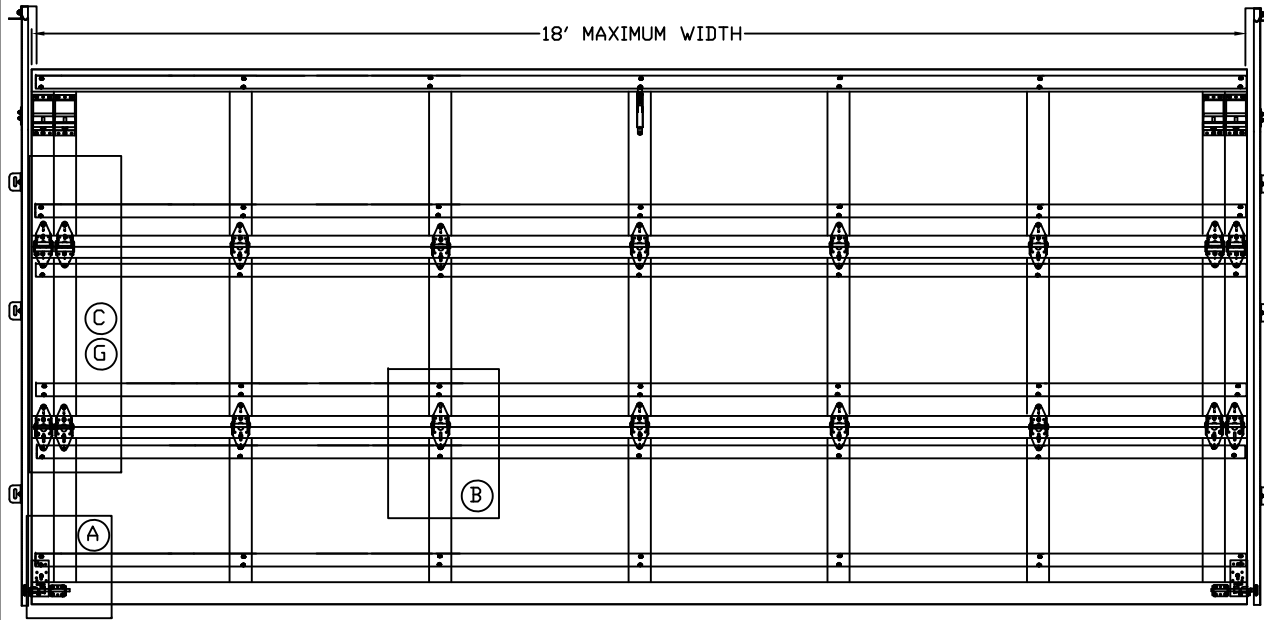


DOORKRAFT,LLC
 1625 Crescent Circle
 Suite 225
 Carrollton,TX 75006

RESIDENTIAL CEDAR WOOD DOOR WINDLOAD 1

DRAWING No.: 18' x 7' WL1	
SHEET No.: 1 OF 2	
DRAWN BY: JKL	DATE: 05-18-2020
REVISION HISTORY: REVISED TO NEW STANDARDS	REV. 5.18.2020
ORIGINAL DRAWING	ORG.DATE 10.2.2019

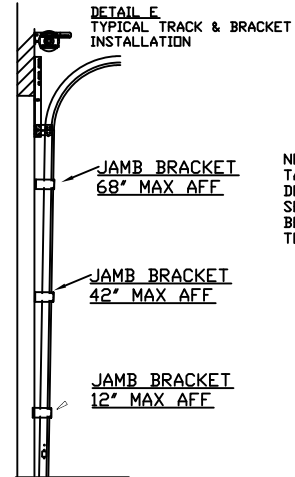
SCALE: NONE	DESIGN PRESSURES +18.3 -20.5	TESTING STANDARDS: DASMA 108-05/12/17	DOOR DISTRIBUTOR: DOORKRAFT LLC
-------------	------------------------------	---------------------------------------	---------------------------------



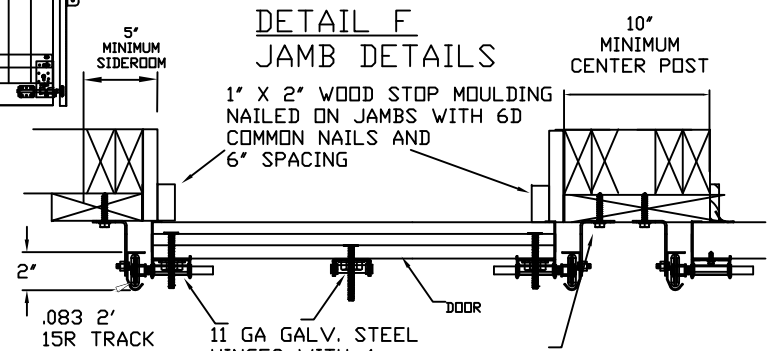
INTERIOR ELEVATION

7' TALL DOOR
 3 QTY 28"
 SECTIONS

8' TALL DOOR
 4 QTY 24"
 SECTIONS

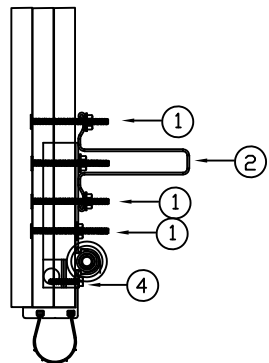


NOTE: SPACING SHOWN FOR SINGLE DOOR 7' TALL TRACK SPACING MAY BE ADJUSTED DOWNWARD FOR TALLER DOORS OR SHORTER SECTION HEIGHTS. ADDITIONAL BRACKETS MAY BE NEEDED FOR TALLER DOORS. SPACING NOT TO EXCEED 30".

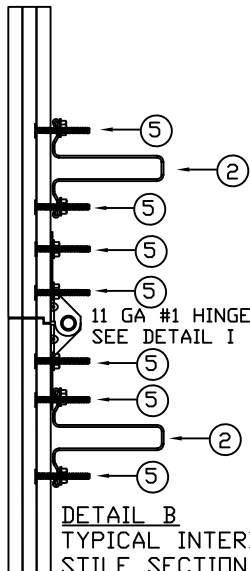


DETAIL F
 JAMB DETAILS

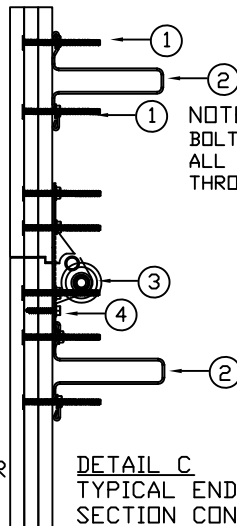
NOTE: ALL ROLLERS ARE
 DETAIL Q ON PAGE 2



DETAIL A
 TYPICAL BOTTOM
 SECTION CONSTRUCTION



DETAIL B
 TYPICAL INTERIOR
 STILE SECTION
 CONSTRUCTION



DETAIL C
 TYPICAL END STILES
 SECTION CONSTRUCTION

NOTE: ALL HARDWARE ON END STILES THROUGH BOLTED THROUGH FRAME AND TONGUE & GROOVE BOARD. ALL CENTER STILE HARDWARE THROUGH BOLTED ONLY THROUGH FRAME

- ⑤ 1/4-20 X 1-7/8" FLAT HEAD CARRIAGE BOLT WITH 1/4-20 SERRATED FLANGE NUT
- ④ 5/16" X 1-5/8" HH LAG SCREW WITH WASHER HEAD
- ③ 11 GAUGE HINGE #1,#2,#3 (DETAIL I,J,K)
- ② 3' X 17'-11" STRUT HD 17GA(Detail U)
- ① 1/4-20 X 2-1/4" FLAT HEAD CARRIAGE BOLT WITH 1/4-20 SERRATED FLANGE NUT

10g HD JAMB BRACKET FASTENED TO WOOD JAMBS WITH 5/16" X 1-3/4" LAG SCREW WITH WASHER HEAD. FASTEN TO TRACK WITH 1/4" TRACK BOLTS AND NUTS. PREPARATION OF JAMBS BY OTHERS SEE DETAIL E FOR SPACING

John E. Scates, P.E.
 2560 King Arthur #124-54
 Lewisville, TX 75056

DOORKRAFT,LLC

1625 Crescent Circle
Suite 225
Carrollton, TX 75006

RESIDENTIAL CEDAR WOOD DOOR WINDLOAD 1

DRAWING No. 1
18' x 7' WL1

SHEET No. 2 OF 2

SCALE:
NONE

DESIGN
PRESSURES

+18.3

-20.5

TESTING STANDARDS:

DASMA 108-05/12/17

DOOR DISTRIBUTOR:

DOORKRAFT LLC

DRAWN BY: JKL

DATE: 05-18-2020

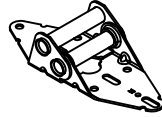
DETAIL I
11 GA #1 HINGE



DETAIL J
11 GA #2 HINGE



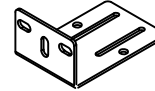
DETAIL K
11 GA #3 HINGE



DETAIL L
10 GA HDJAMB
BRACKET 4-1/4"



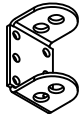
DETAIL M
10 GA HDJAMB
BRACKET 5-1/2"



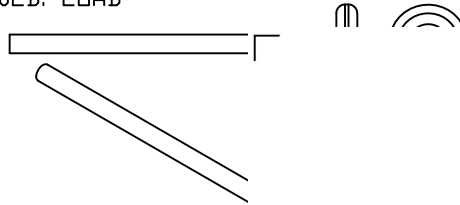
DETAIL N
COMMERCIAL TOP BRACKET
ARROW TRU-LINE PART:853ADJTFC0



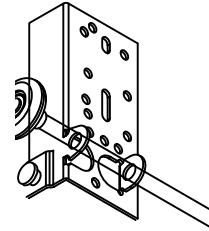
DETAIL S
ROLLER CARRIER
NAPOLEAN LYNX PART#3-44-1



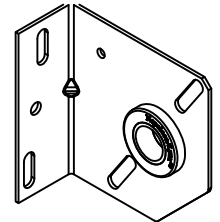
DETAIL Q
2" NYLON PRECISION BEARING
HIGH STRENGTH ROLLER
9-1/2" ZINC PLATED HIGH STRENGTH STEM
100LB. LOAD



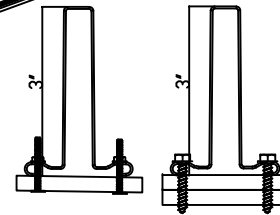
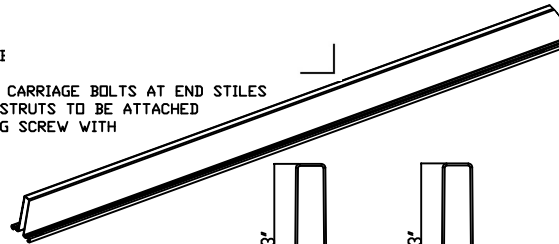
DETAIL R
BB-100 BOTTOM BRACKET
NAPOLEAN LYNX PART: 3-37-1



DETAIL V
3-3/8" CENTER SUPPORT
11GA W/BRG



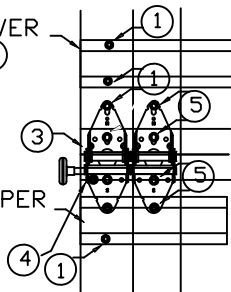
DETAIL U
3" 17'11" STRUT
STRUTS TO BE THROUGH-I
WITH 1/4-20X 1-7/8" FH
AND 1/4-20 X 2-1/4" FH CARRIAGE BOLTS AT END STILES
ON MODEL WL-1 CENTER STRUTS TO BE ATTACHED
WITH 5/8" X 1- 3/8" LAG SCREW WITH
WASHER HEAD



DETAIL G
TYPICAL END STILE
ATTACHMENT

TYPICAL LOWER
STRUT ②

TYPICAL UPPER
STRUT ②



- ① 1/4-20 X 2-1/4" FLAT HEAD CARRIAGE BOLT WITH 1/4-20 SERRATED FLANGE NUT
- ② 3" X 17'-11" STRUT HD 17GA
- ③ 11 GAUGE HINGE #1,#2,#3
- ④ 5/8-16 X 1-5/8" HH LAG SCREW WITH WASHER HEAD
- ⑤ BOLT WITH 1/4-20 SERRATED FLANGE NUT

(through bolted
through frame
and t&g)

John E. Scates, P.E.
2560 King Arthur #124-54
Lewisville, TX 75056