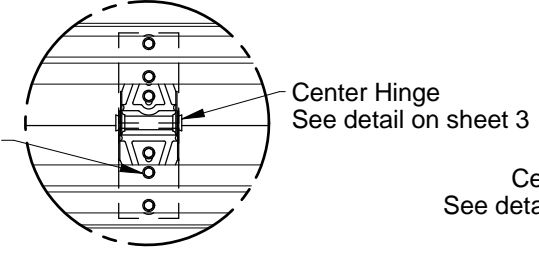
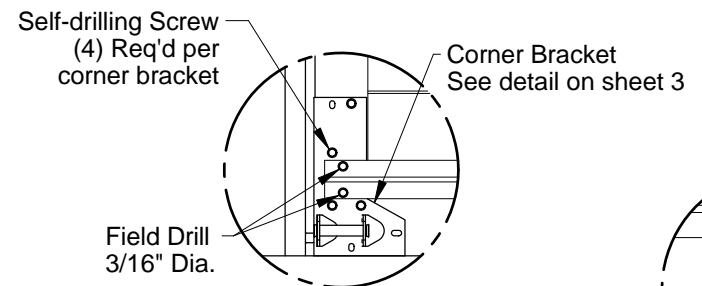


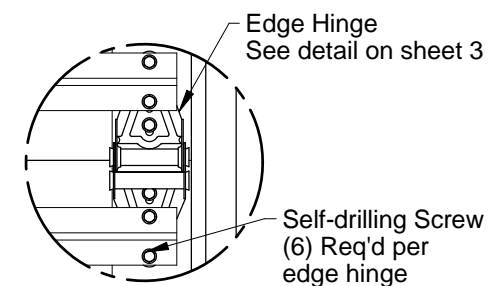
Top Fixture Attachment



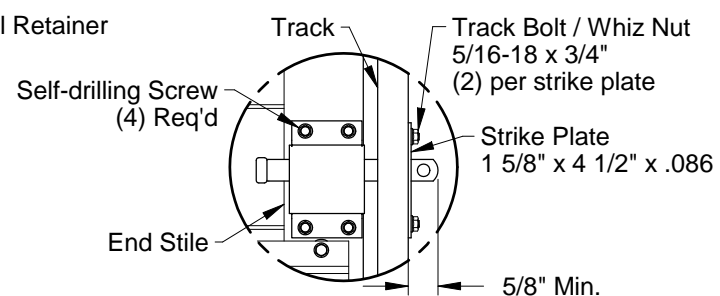
Center Hinge Attachment



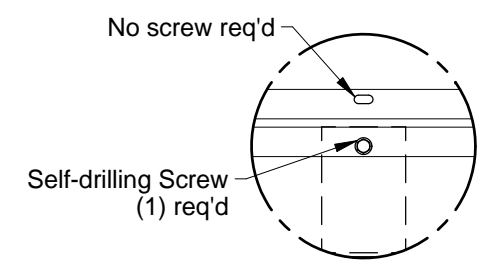
Corner Bracket Attachment



Edge Hinge Attachment

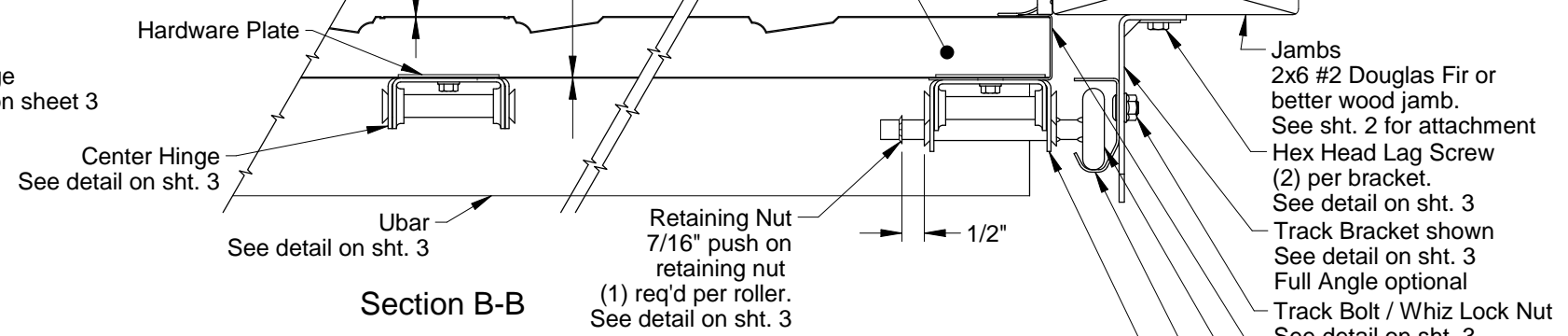


Optional Interior Lock Attachment

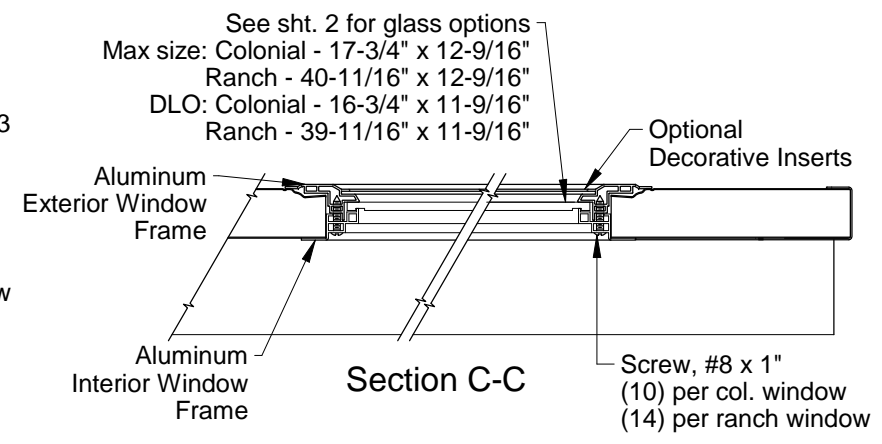


Bottom Section Ubar Attachment

Interior Skin
.013 thick G-40 galvanized steel with an epoxy primer and baked on polyester finish which is roll-formed with wood grain texture.
Exterior Skin
.014 thick G-40 galvanized steel with an epoxy primer and baked on polyester finish which is roll-formed with wood grain texture.



Section B-B



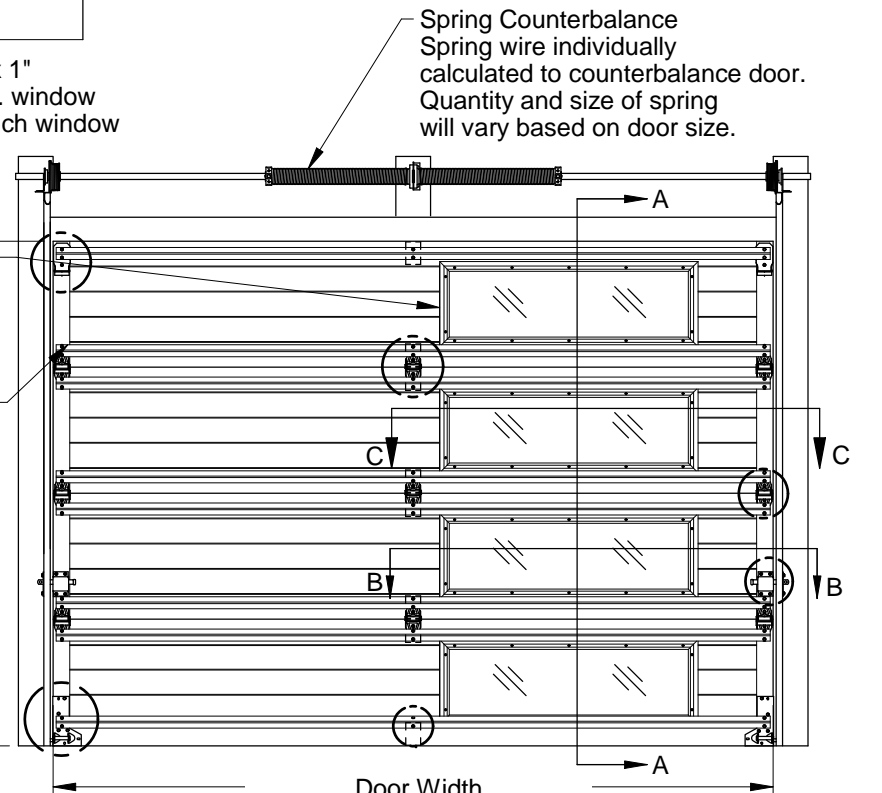
Section C-C

See sht. 2 for glass options
Max size: Colonial - 17-3/4" x 12-9/16"
Ranch - 40-11/16" x 12-9/16"
DLO: Colonial - 16-3/4" x 11-9/16"
Ranch - 39-11/16" x 11-9/16"

Door Height
7'-0" High shown
Other door heights available up to 10'-0" using 21" or 24" high sections

Windows (Optional)
See options on sht. 2
One vertical row available on left or right side of door. (Right shown)

Steel Reinforcement
(2) U-bar per section fastened to all center and end stiles using (2) self-drilling screws at each stile.
Locks required on doors not electrically operated.



Interior Elevation
See chart for other door widths (10'-0" shown)

Doors tested per ANSI/DASMA 108 for static air pressure and ANSI/DASMA 115 for large missile impact and cyclic wind pressure

Max. Door Width	AP138 / AP138C / AP200 / AP200C									
	Colonial		Ranch		Carriage House		Colonial		Ranch	
	Hinges per Section	Design Loads	Hinges per Section	Design Loads	Hinges per Section	Design Loads	Hinges per Section	Design Loads	Hinges per Section	Design Loads
8'-0"	1	50.0 -55.0	1	50.0 -55.0	1	50.0 -55.0	1	50.0 -55.0	1	50.0 -55.0
9'-0"	1	50.0 -55.0	1	50.0 -55.0	1	50.0 -55.0	1	50.0 -55.0	1	50.0 -55.0
10'-0"	2	50.0 -55.0	1	50.0 -55.0	1	50.0 -55.0	1	50.0 -55.0	1	50.0 -55.0

John E. Scates
2560 King Arthur Blvd, Ste 124-54
Lewisville, TX 75056
FL PE #51737
TX PE #56308-42203

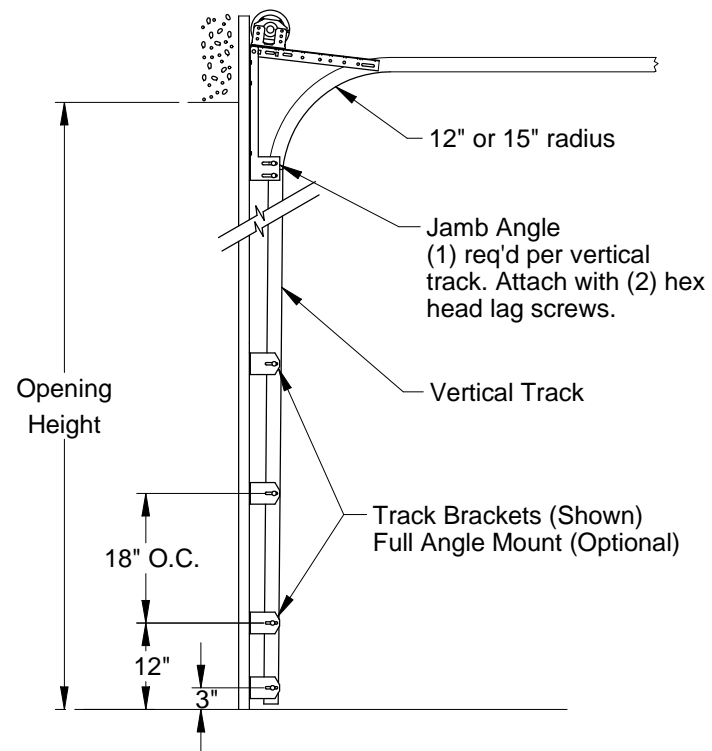
Rev.	Description	ECO	Date
B	Removed vent option on sheet 1.	7679.02	12/09/19
A	New release for production.	7679.01	02/07/19

Scale: None
Drawn by: R. Frey
Checked by: G. Wedekind
Date: 02/07/19
ECO: 7679.01

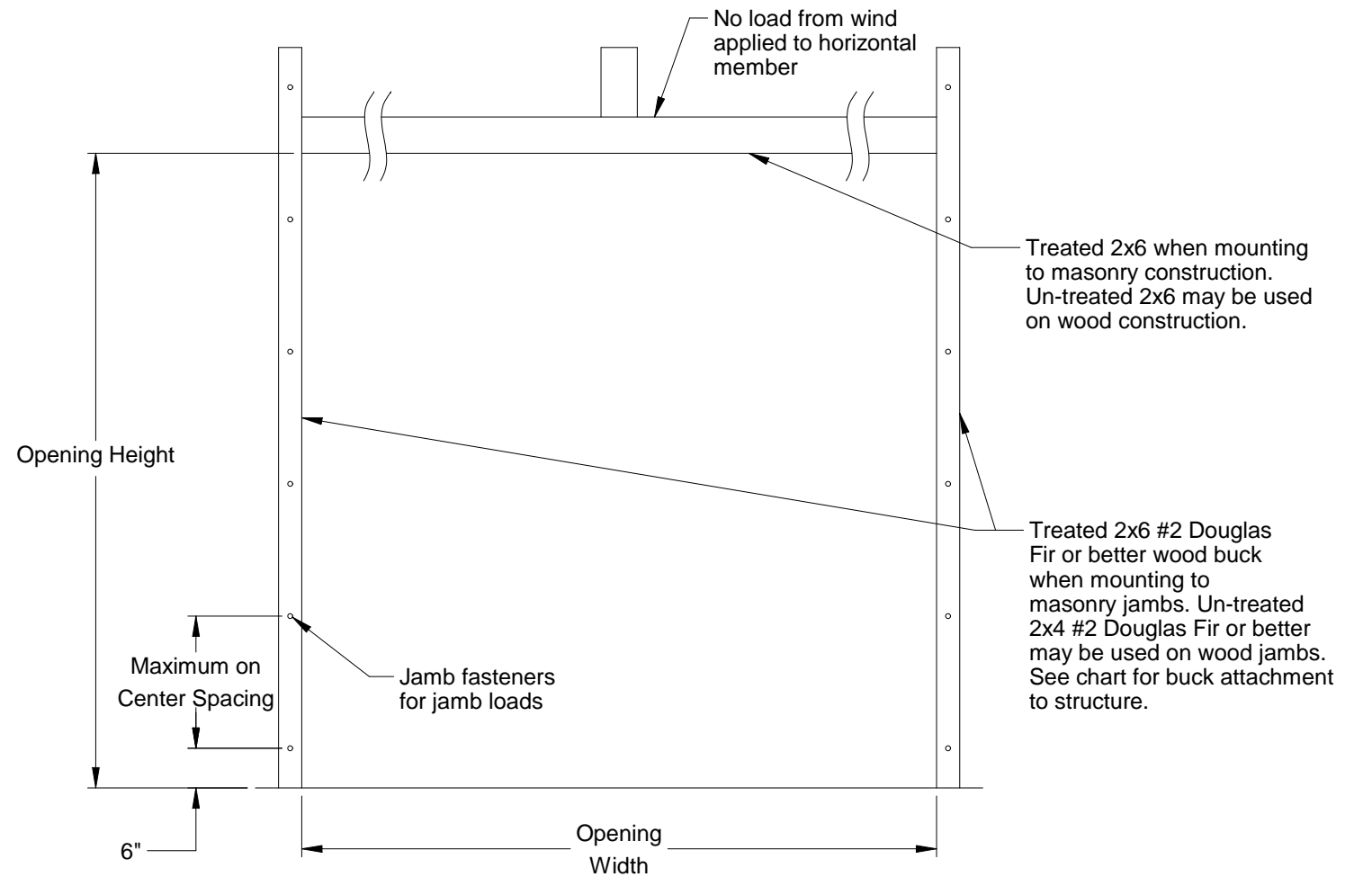
RAYNOR
1101 East River Road
Dixon, IL 61021

Title: Spec, Wind Load Aspen Series

No. P-2901	Sheet 1 of 3	Rev B
------------	--------------	-------



Typical Track Installation
 Normal headroom track shown, low headroom, lift clearance and vertical lift track available

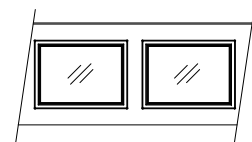


Jamb Attachment Notes:

1. Maximum Positive Load per Jamb = (10'-0" x 50.0 PSF) / 2 = 250 lbs. per foot.
2. Maximum Negative Load per Jamb = (10'-0" x -55.0 PSF) / 2 = 275 lbs. per foot.
3. Design of the supporting structure shall be the sole responsibility of the building designer and shall be designed for the jamb loads listed in notes 1 and 2.
4. Alternate jamb attachments may be used if approved by a registered Professional Engineer.
5. DASMA Technical Data Sheet TDS-161 may be used for alternate jamb attachments.
6. 3/8" diameter lag screws required 1/16" pilot hole and 1-1/2" minimum required distance.



(1) Colonial windows:
1/4" Polycarbonate

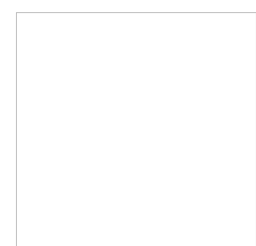


(2) Colonial windows:
1/4" Polycarbonate



Ranch windows:
1/4" Polycarbonate

Window Options



John E. Scates
 2560 King Arthur Blvd, Ste 124-54
 Lewisville, TX 75056
 FL PE #51737
 TX PE #56308-f2203

2x6 Attachment to Structure

Structure Type	Fastener Type	Minimum Embedment	Minimum Edge Distance	Minimum on Center Spacing	Maximum on Center Spacing	Allowable Tension Load
2500 PSI Min. Concrete	1/4" Tapcon+ (Plus) with 1-1/8" OD Washer	2"	2.5	6"	24"	526
Southern Pine	3/8" x 3" Lag with 1-1/8" OD Washer	1.50"	1.50"	1.50"	24"	655
Spruce Pine Fir	3/8" x 3" LAG with 1-1/8" OD Washer	1.50"	1.50"	1.50"	23"	482

Scale: None
Drawn by: R. Frey
Checked by: G. Wedekind
Date: 02/07/19
ECO: 7679.01



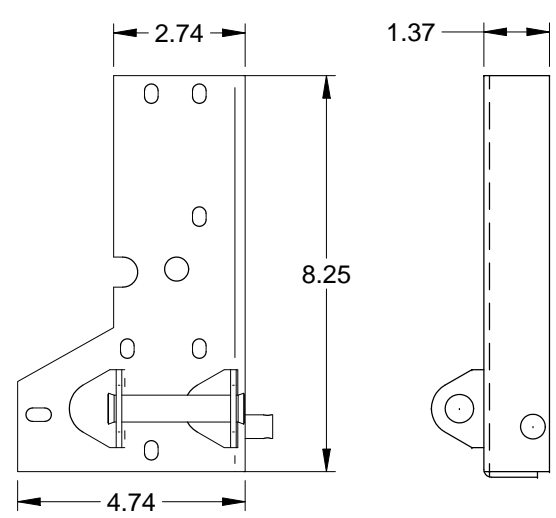
1101 East River Road
 Dixon, IL 61021

Title: Spec, Wind Load Aspen Series

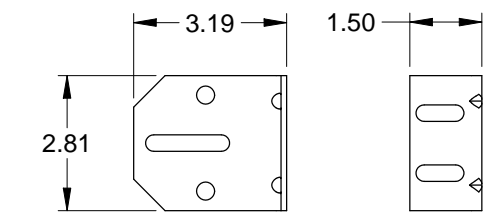
No. P-2901

Sheet 2

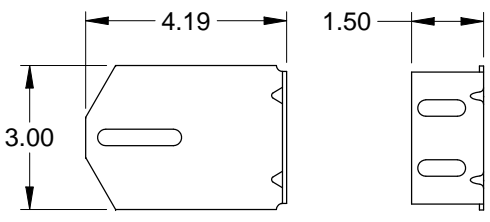
Rev B



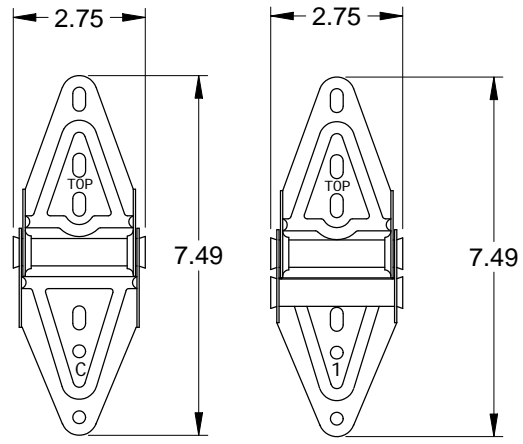
Corner Bracket
.116 Galv. Steel



3" Track Bracket
.116 Galv. Steel

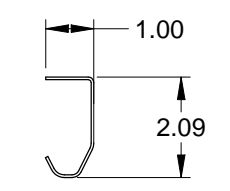


4" Track Bracket
.116 Galv. Steel

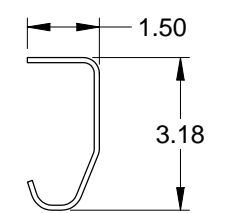


Center Hinge
.045 Galv. Steel

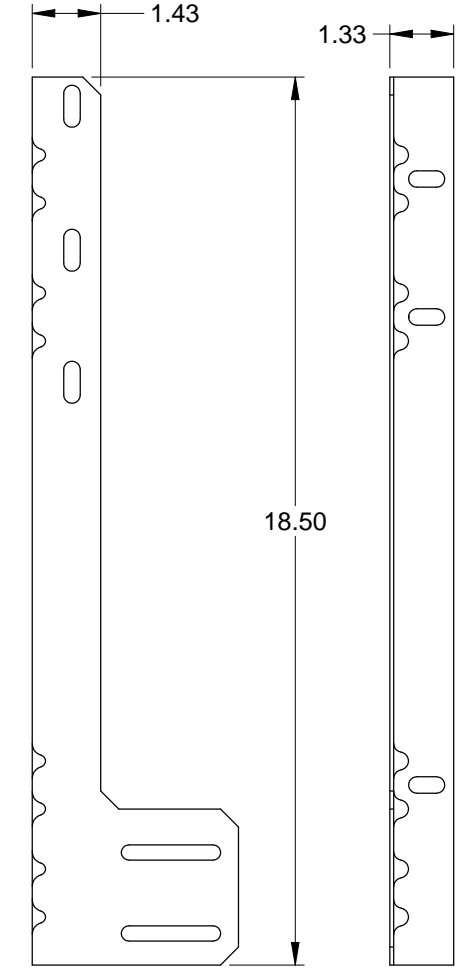
Edge Hinge
.086 Galv. Steel



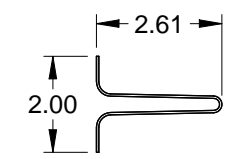
2" Track
.086 Galv. Steel



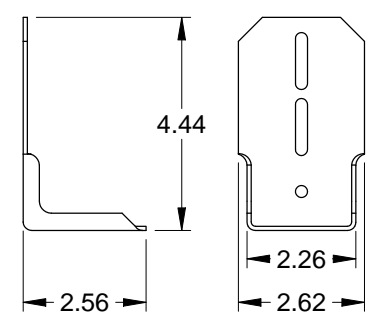
3" Track (Optional)
.105 Galv. Steel



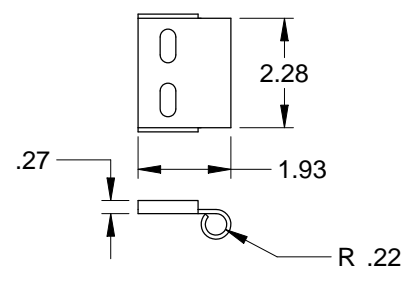
Jamb Angle
.078 Galv. Steel



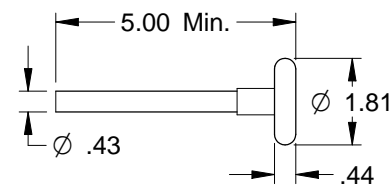
Steel U-bar
18 Ga. (.049 min.) Galvanized
High Tensile Steel
80 KSI Minimum Yield



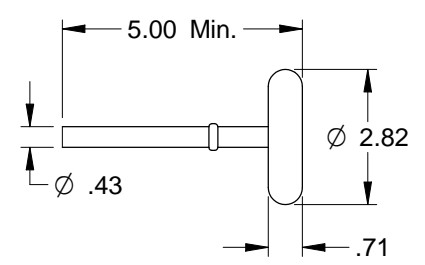
Top Fixture
.086 Galv. Steel



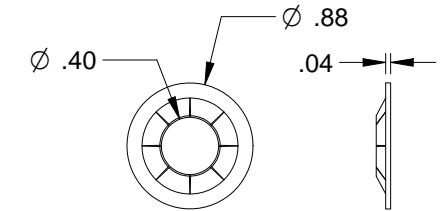
Roller Carrier
.116 Galv. Steel
Attached to Top Fixture
w/(2) Track Bolts and Whiz Nuts



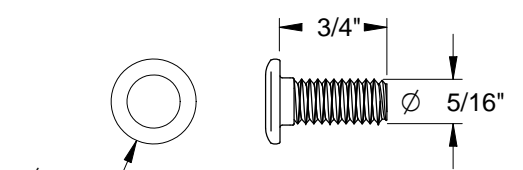
2" Roller
Nylon 11-ball (Std.)
Steel 10-ball (Opt.)



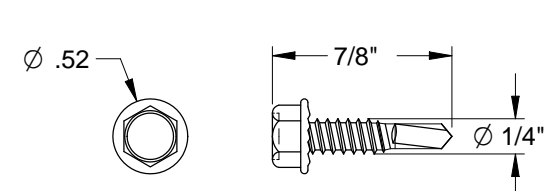
3" Roller
Steel 10-ball (Opt.)



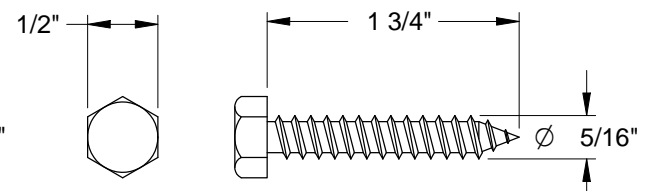
Retaining Nut



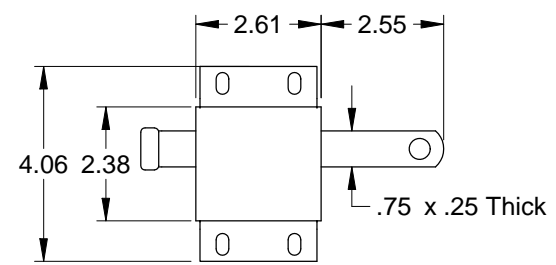
Track Bolt



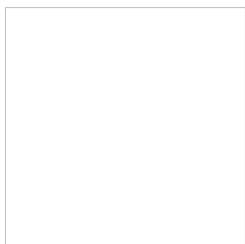
Self-Drilling Screw



Hex Head Lag Screw



Slide Lock
Case .086 Galv. Steel



John E. Scates
2560 King Arthur Blvd, Ste 124-54
Lewisville, TX 75056
FL PE #51737
TX PE #56308-f2203

Scale: None
Drawn by: R. Frey
Checked by: G. Wedekind
Date: 02/07/19
ECO: 7679.01



1101 East River Road
Dixon, IL 61021

Title: Spec, Wind Load Aspen Series		
No. P-2901	Sheet 3	Rev B