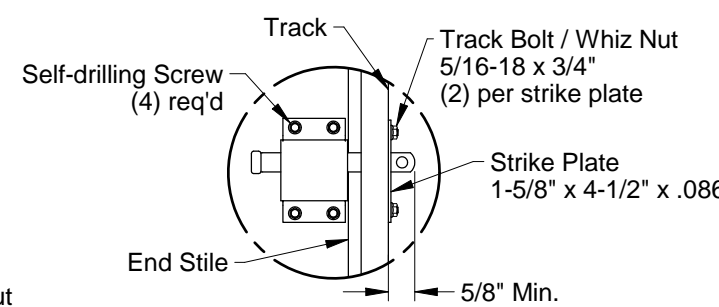


**Top Fixture Attachment**



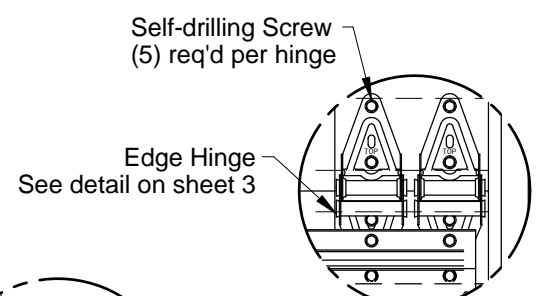
**Optional Interior Lock Attachment**

Doors tested per ANSI/DASMA 108 for static air pressure

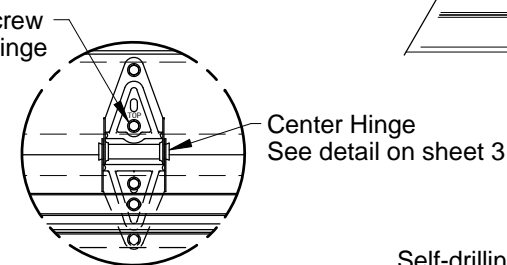
Maximum Door Width	Ctr Hngs per Sect	Design Loads	
8'-2"	1	33.2	-36.7
9'-2"	1		
10'-2"	2		
12'-2"	2		
14'-2"	3	29.5	-32.6
16'-2"	3		
18'-2"	4		
20'-2"	4	26.6	-29.4
22'-2"	5	22.0	-24.3
24'-2"	5	18.5	-20.5

John E. Scates  
2560 King Arthur Blvd, Ste 124-54  
Lewisville, TX 75056  
FL PE #51737  
TX PE #56308-f2203

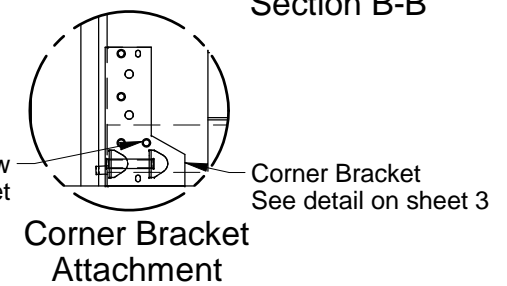
Professional Engineer's seal provided only for verification of wind load construction details



**Edge Hinge Attachment**



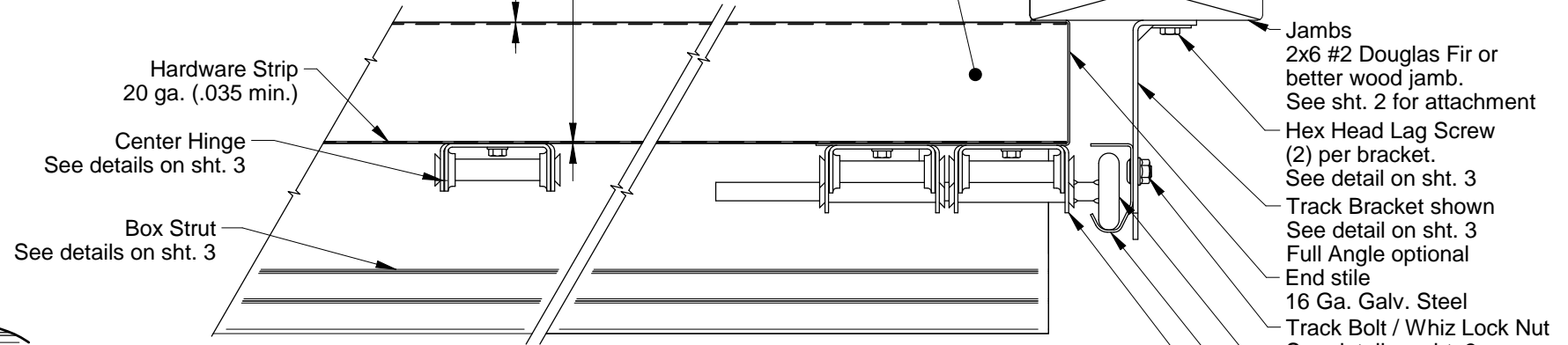
**Center Hinge Attachment**



**Corner Bracket Attachment**

**Interior Skin**  
.013 thick G-40 galvanized steel with an epoxy primer and baked on polyester finish which is roll-formed with stucco texture.

**Exterior Skin**  
.013 thick G-40 galvanized steel with an epoxy primer and baked on polyester finish which is roll-formed with stucco texture.



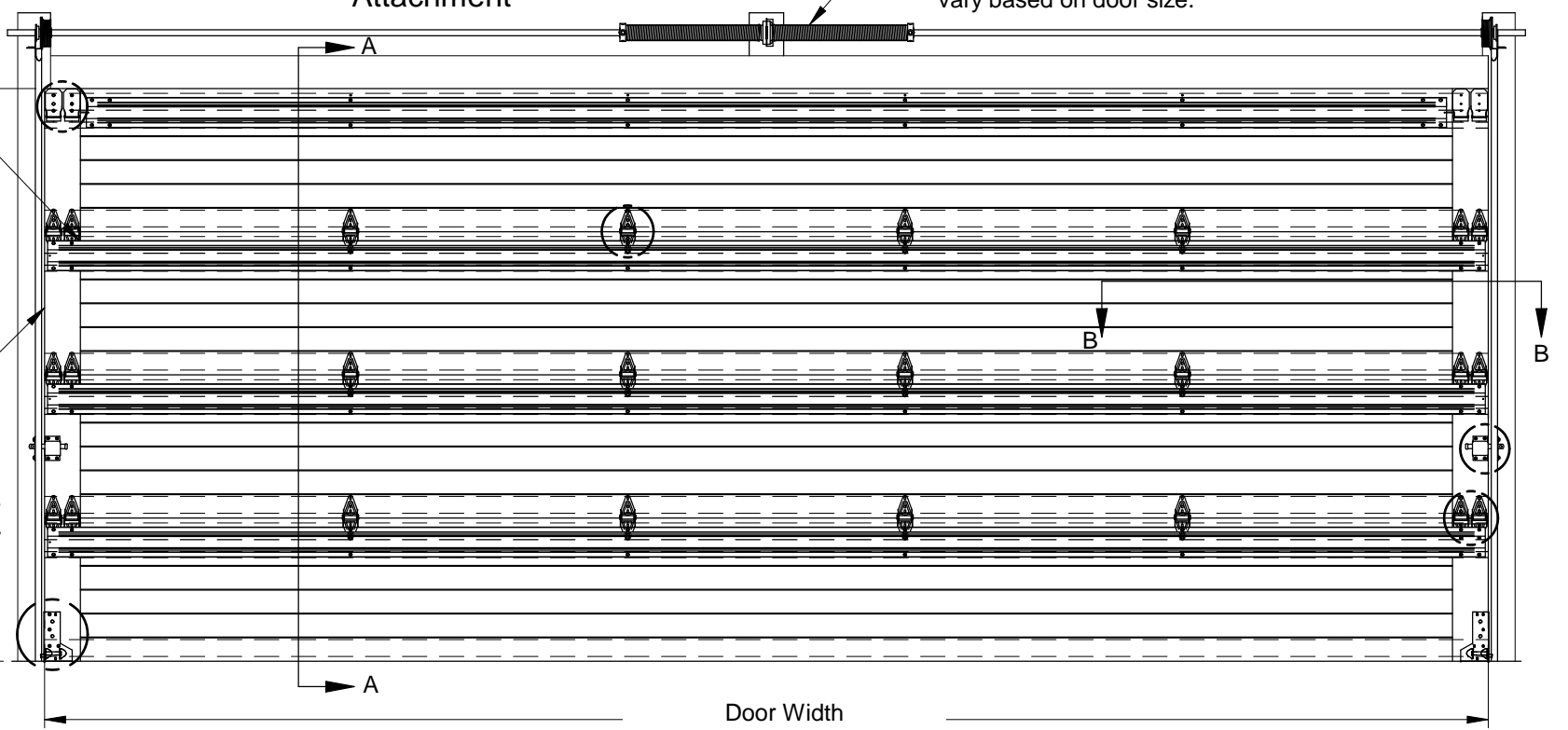
**Section B-B**

**Steel Reinforcement**  
(1) Box strut per section, fastened to all center and end stiles using (2) sheet metal screws at each stile.

**Door Height**  
8'-0" High shown  
Other door heights available up to 24'-0" using 21" or 24" high sections

**Double endstiles**

**Locks required on doors not electrically operated.**



**Door Width**  
See chart for other door widths (20'-2" shown)

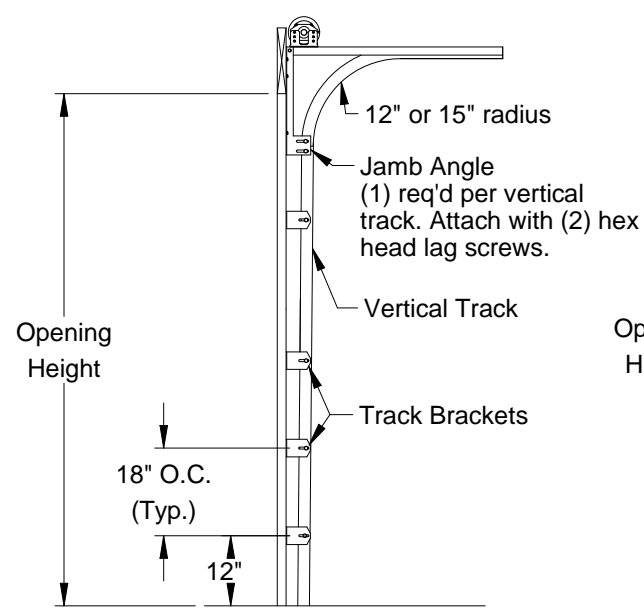
**Interior Elevation**

Rev.	Description	ECO	Date	ECO: 7679.01
B	Removed vent option on sheet 1.	7679.03	12/09/19	
A	New release for production.	7679.01	02/04/19	

Scale: None
Drawn by: R. Frey
Checked by: G. Wedekind
Date: 02/04/19

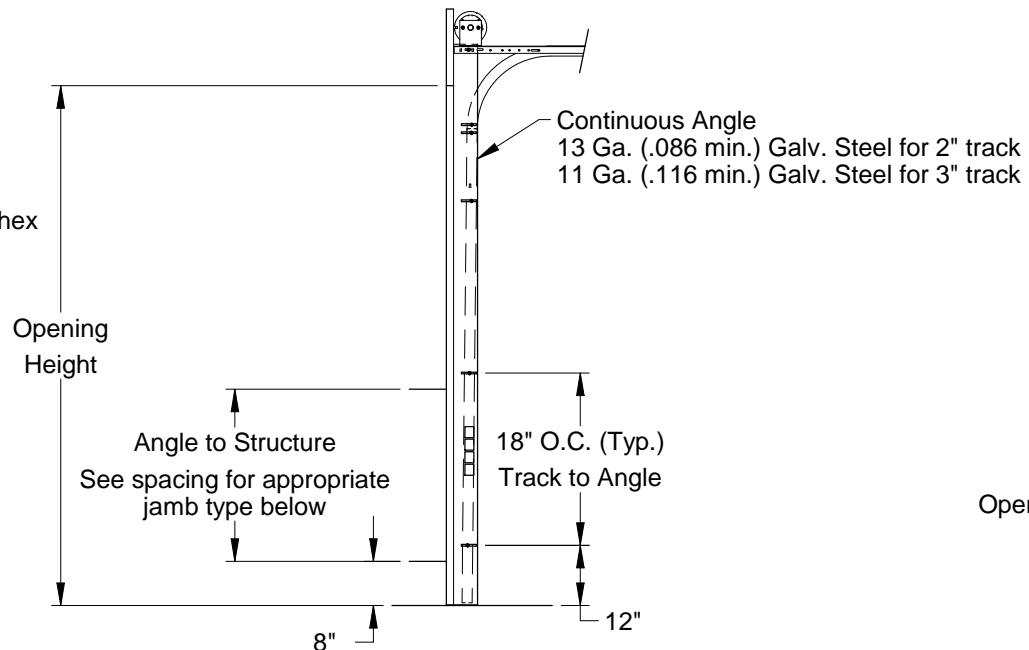
1101 East River Road  
Dixon, IL 61021

Title: Spec, Wind Load TM300	
No. P-2815	Rev B
Sheet 1 of 3	

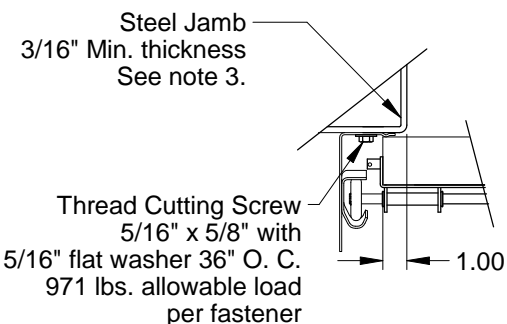
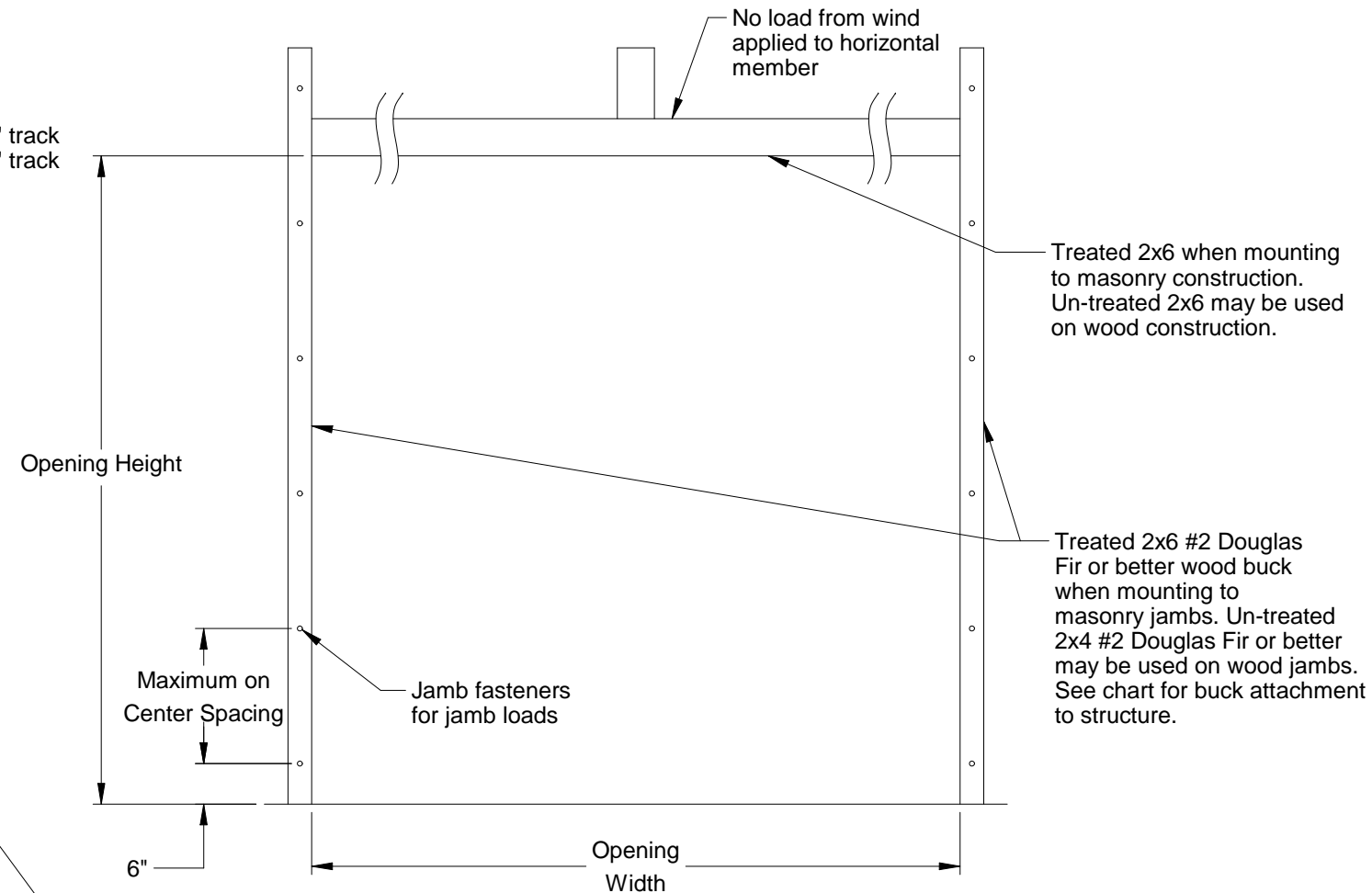


**Typical Track Installation  
Bracket Mount  
Wood Jamb**

Normal headroom track shown, low headroom, lift clearance and vertical lift track available

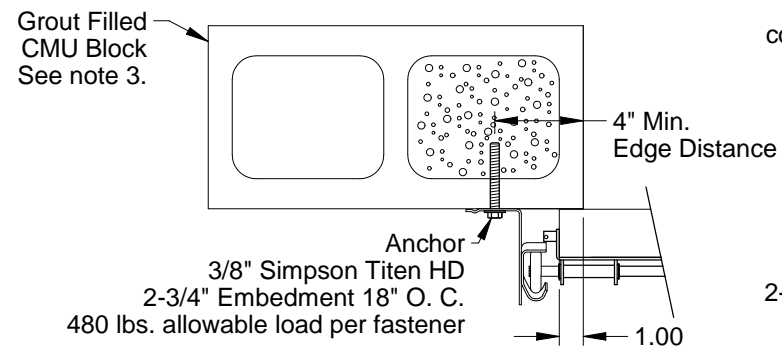


**Typical Track Installation  
Angle Mount  
Wood, Steel or Concrete Jamb**



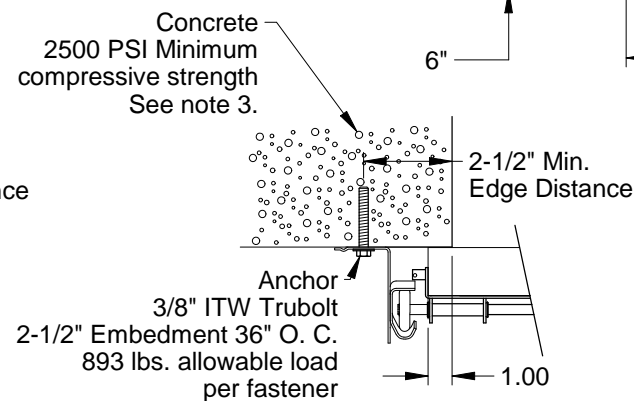
**Track Assembly Attachment  
to Steel Jamb**

2" Track Angle Mount Turned-in (shown)  
3" Track Angle Mount Available



**Track Assembly Attachment  
to Grout Filled CMU Block**

2" Track Angle Mount Turned-out (shown)  
3" Track Angle Mount Available

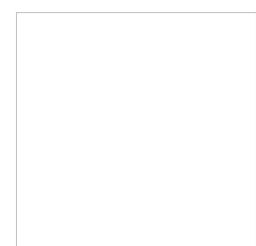


**Track Assembly Attachment  
to 2500 PSI Min. Concrete**

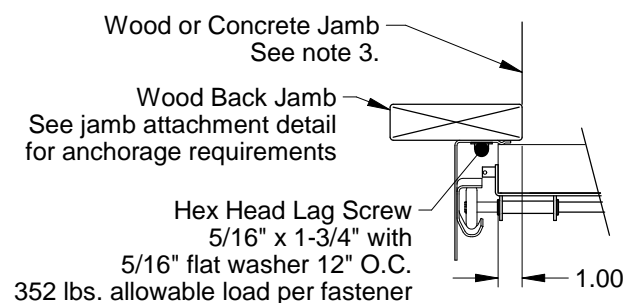
2" Track Angle Mount Turned-out (shown)  
3" Track Angle Mount Available

**Jamb Attachment Notes:**

1. Maximum Positive Load per Jamb =  $(20'-2" \times 26.6 \text{ PSF}) / 2 = 268 \text{ lbs. per foot.}$
2. Maximum Negative Load per Jamb =  $(20'-2" \times -29.4 \text{ PSF}) / 2 = 296 \text{ lbs. per foot.}$
3. Design of the supporting structure shall be the sole responsibility of the building designer and shall be designed for the jamb loads listed in notes 1 and 2.
4. Alternate jamb attachments may be used if approved by a registered Professional Engineer.
5. DASMA Technical Data Sheet TDS-161 may be used for alternate jamb attachments.
6. 3/8" diameter lag screws required 1/16" pilot hole and 1-1/2" minimum required distance.

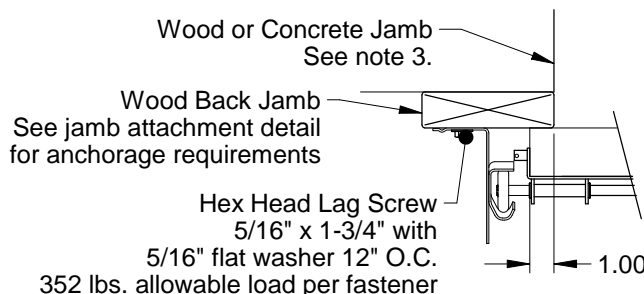


John E. Scates  
2560 King Arthur Blvd, Ste 124-54  
Lewisville, TX 75056  
FL PE #51737  
TX PE #56308-f2203



**Track Assembly Attachment  
to Wood Back Jamb**

2" Track Angle Mount Turned-in (shown)  
3" Track Angle Mount Available



**Track Assembly Attachment  
to Wood Back Jamb**

2" Track Angle Mount Turned-out (shown)  
3" Track Angle Mount Available

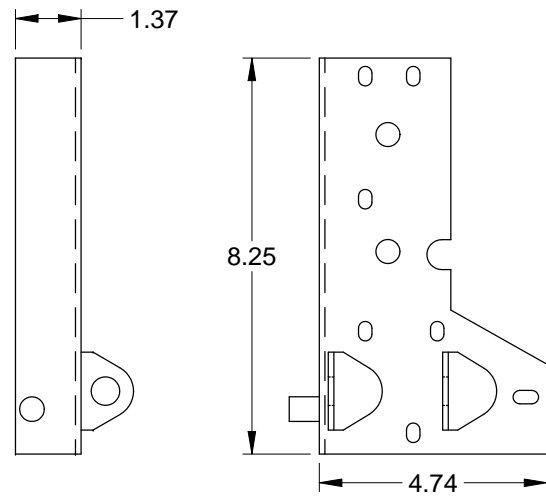
2x6 Attachment to Structure						
Structure Type	Fastener Type	Minimum Embedment	Minimum Edge Distance	Minimum on Center Spacing	Maximum on Center Spacing	Allowable Tension Load
2500 PSI Min. Concrete	1/4" Tapcon+ (Plus) with 1-1/8" OD Washer	2"	2.5"	6"	23"	526
Southern Pine	3/8" x 3" Lag with 1-1/8" OD Washer	1.50"	1.50"	1.50"	24"	655
Spruce Pine Fir	3/8" x 3" LAG with 1-1/8" OD Washer	1.50"	1.50"	1.50"	21"	482

Scale: None
Drawn by: R. Frey
Checked by: G. Wedekind
Date: 02/04/19
ECO: 7679.01

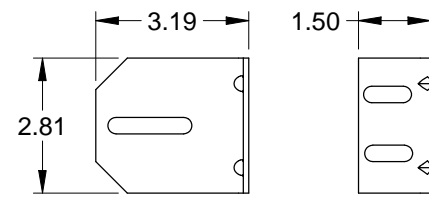


1101 East River Road  
Dixon, IL 61021

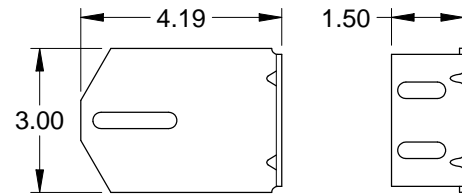
Title: Spec, Wind Load TM300		
No. P-2815	Sheet 2	Rev B



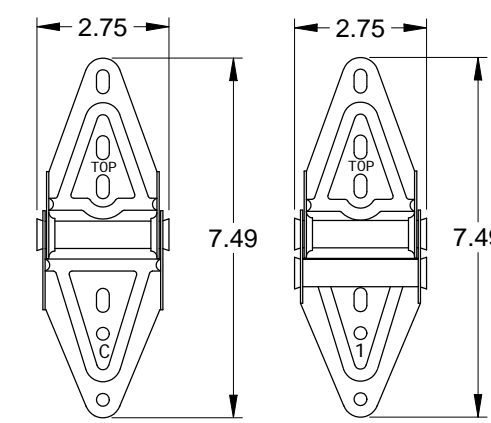
Corner Bracket  
(For doors over 600 lbs.)  
.116 Galv. Steel



3" Track Bracket  
.116 Galv. Steel

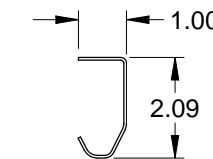


4" Track Bracket  
.116 Galv. Steel

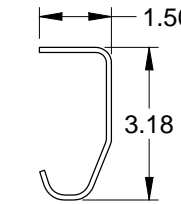


Center Hinge  
.045 Galv. Steel

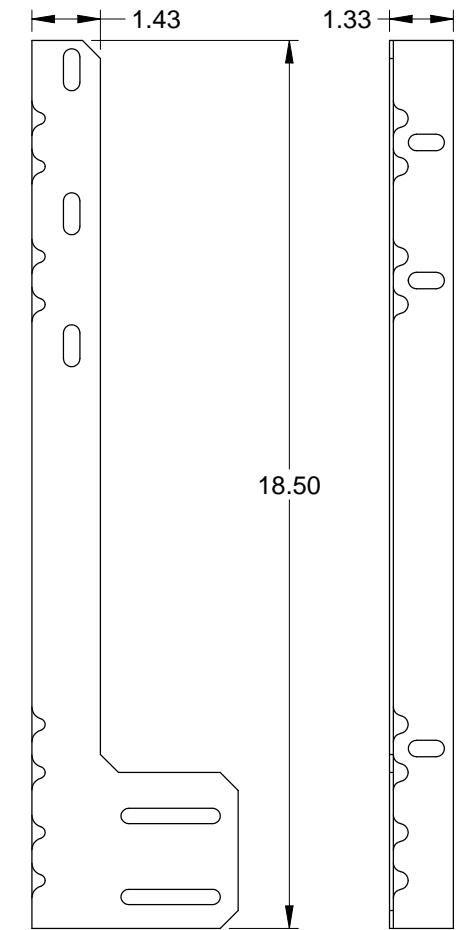
Edge Hinge  
.086 Galv. Steel



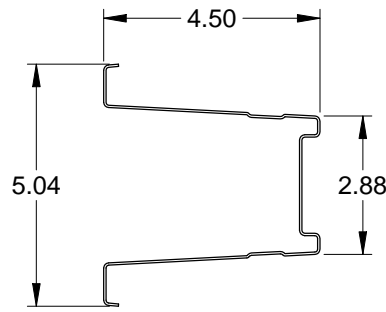
2" Track  
.055 Galv. Steel



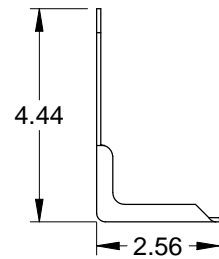
3" Track (Optional)  
.105 Galv. Steel



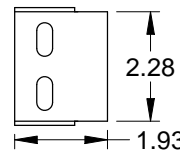
Jamb Angle  
.078 Galv. Steel



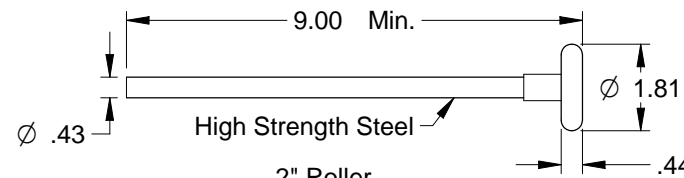
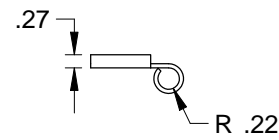
Steel Box Strut  
20 Ga. (.035" Min.) Galvanized  
High Tensile Steel  
80 KSI Minimum Yield



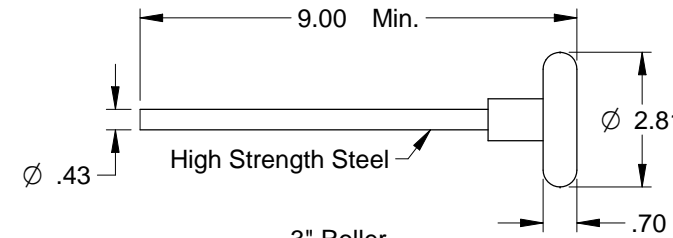
Top Fixture  
.086 Galv. Steel



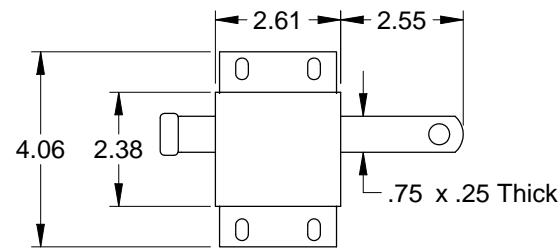
Roller Carrier  
.116 Galv. Steel  
Attached to Top Fixture  
w/(2) Track Bolts and Whiz Nuts



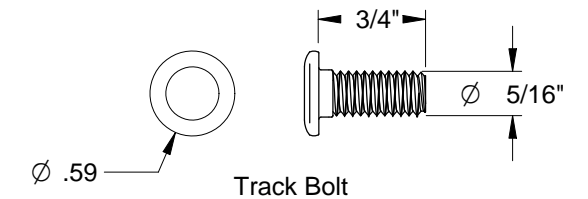
2" Roller  
Nylon Precision Bearing (Std.)  
Steel 10-ball (Opt.)



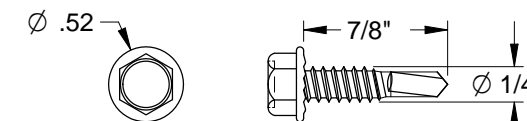
3" Roller  
Steel Precision Bearing (Opt.)



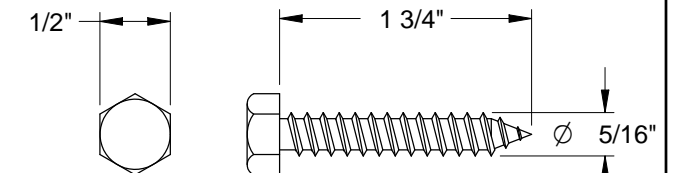
Slide Lock  
Case .086 Galv. Steel



Track Bolt



Self-Drilling Screw



Hex Head Lag Screw



John E. Scates  
2560 King Arthur Blvd, Ste 124-54  
Lewisville, TX 75056  
FL PE #51737  
TX PE #56308-f2203

Scale: None	<p>1101 East River Road Dixon, IL 61021</p>	Title: Spec, Wind Load TM300	
Drawn by: R. Frey		No. P-2815	Sheet 3
Checked by: G. Wedekind			
Date: 02/04/19			
ECO: 7679.01			