

Doors tested per ANSI/DASMA 108 for static air pressure

Maximum Door Width	Stiles per Sect.	Hinges per Sect.	Design Loads	
8'-2"	2	2	50.1	-55.9
9'-2"	2	2		
10'-2"	2	2	43.0	-48.0
12'-2"	3	3		
14'-2"	3	3	33.0	-36.9
16'-2"	4	4		

John E. Scates  
 2560 King Arthur Blvd, Ste 124-54  
 Lewisville, TX 75056  
 FL PE #51737  
 TX PE #56308-12203

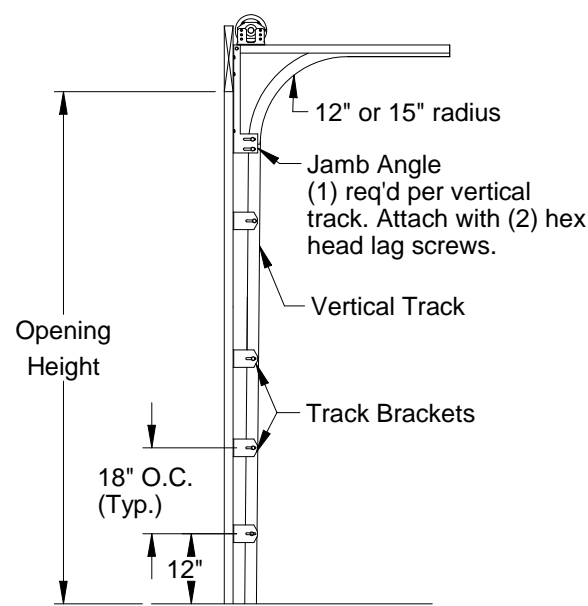
Professional Engineer's seal provided only for verification of wind load construction details

Rev.	Description	ECO	Date	ECO: 7679.01
B	Added glass types on sheet 1.	7679.03	12/18/19	
A	New release for production.	7679.01	01/08/19	

Scale: None
Drawn by: R. Frey
Checked by: G. Wedekind
Date: 01/08/19

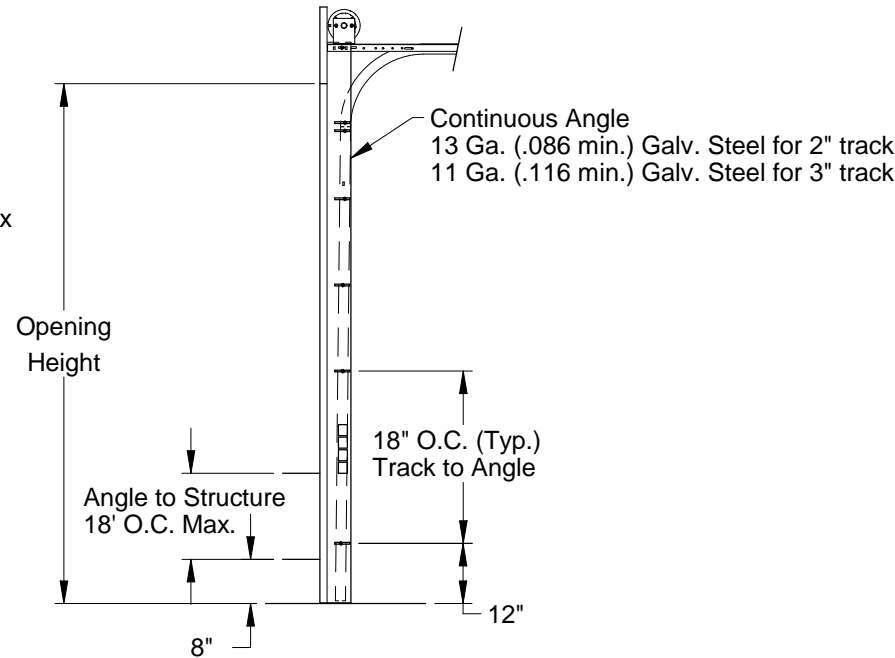


Title: Spec, Wind Load AlumaView - AV200, StyleView - CPF, WPF	
No. P-2809	Sheet 1 of 3
Rev B	

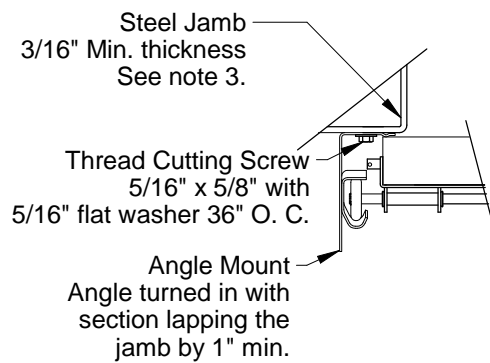
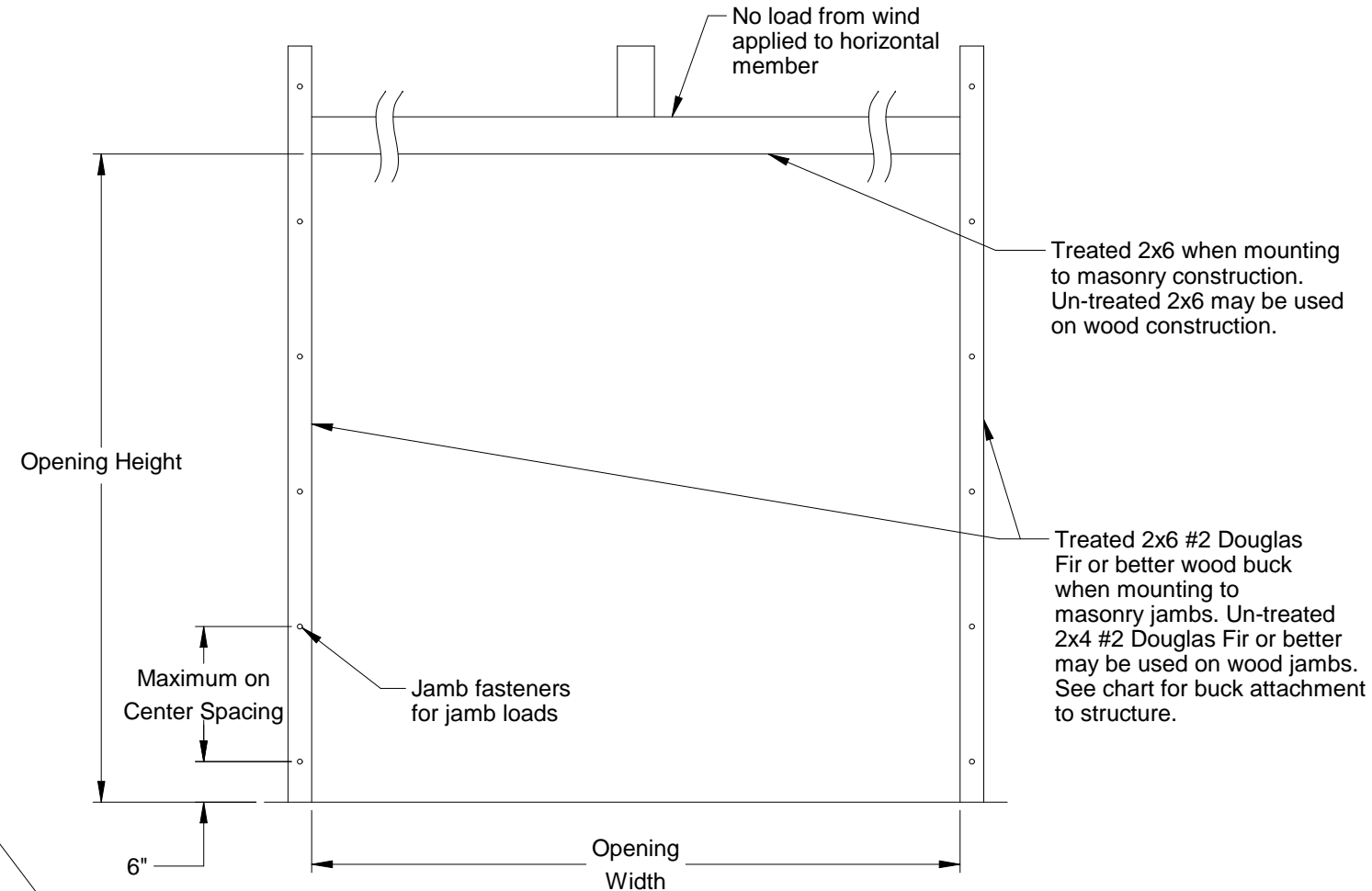


**Typical Track Installation  
Bracket Mount  
Wood Jamb**

Normal headroom track shown, low headroom, lift clearance and vertical lift track available

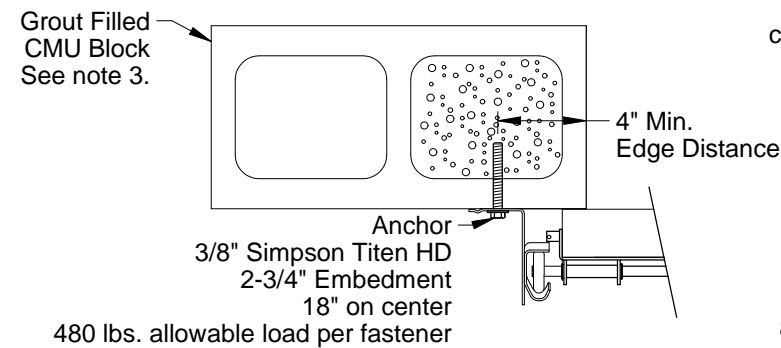


**Typical Track Installation  
Angle Mount  
Wood, Steel or Concrete Jamb**



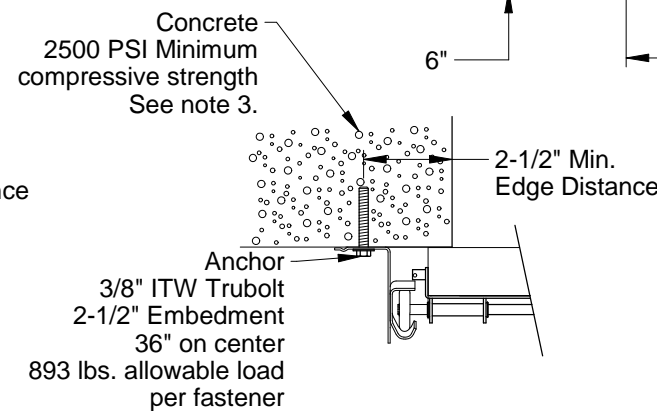
**Track Assembly Attachment  
to Steel Jamb**

2" Track Angle Mount turned in Shown  
3" Track Angle Mount Available



**Track Assembly Attachment  
to Grout Filled CMU Block**

2" Track Angle Mount turned out Shown  
3" Track Angle Mount Available



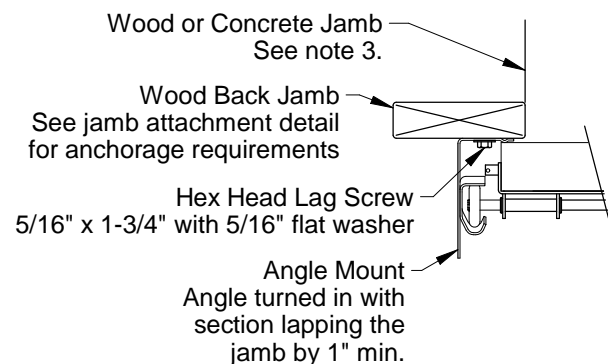
**Track Assembly Attachment  
to 2500 PSI Min. Concrete**

2" Track Angle Mount turned out Shown  
3" Track Angle Mount Available

**Jamb Attachment Notes:**

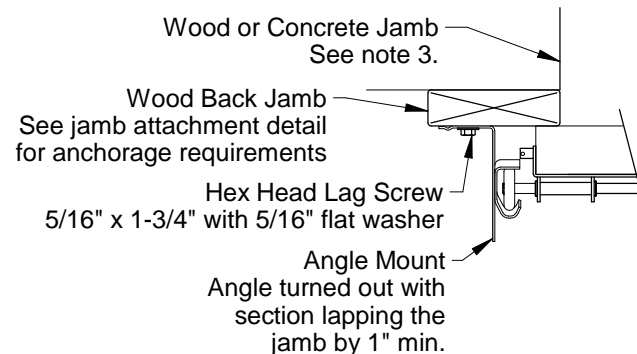
1. Maximum Positive Load per Jamb = (14'-2" x 43.0 PSF) / 2 = 305 lbs. per foot.
2. Maximum Negative Load per Jamb = (14'-2" x -48.0 PSF) / 2 = 340 lbs. per foot.
3. Design of the supporting structure shall be the sole responsibility of the building designer and shall be designed for the jamb loads listed in notes 1 and 2.
4. Alternate jamb attachments may be used if approved by a registered Professional Engineer.
5. DASMA Technical Data Sheet TDS-161 may be used for alternate jamb attachments.
6. 3/8" diameter lag screws required 1/16" pilot hole and 1-1/2" minimum required distance.

2x6 Attachment to Structure						
Structure Type	Fastener Type	Minimum Embedment	Minimum Edge Distance	Minimum on Center Spacing	Maximum on Center Spacing	Allowable Tension Load
2500 PSI Min. Concrete	1/4" Tapcon+ (Plus) with 1-1/8" OD Washer	2"	2.5"	6"	24"	526
Southern Pine	3/8" x 3" Lag with 1-1/8" OD Washer	1.50"	1.50"	1.50"	24"	655
Spruce Pine Fir	3/8" x 3" LAG with 1-1/8" OD Washer	1.50"	1.50"	1.50"	18"	482



**Track Assembly Attachment  
to Wood Back Jamb**

2" Track Angle Mount turned in Shown  
3" Track Angle Mount Available



**Track Assembly Attachment  
to Wood Back Jamb**

2" Track Angle Mount turned out Shown  
3" Track Angle Mount Available

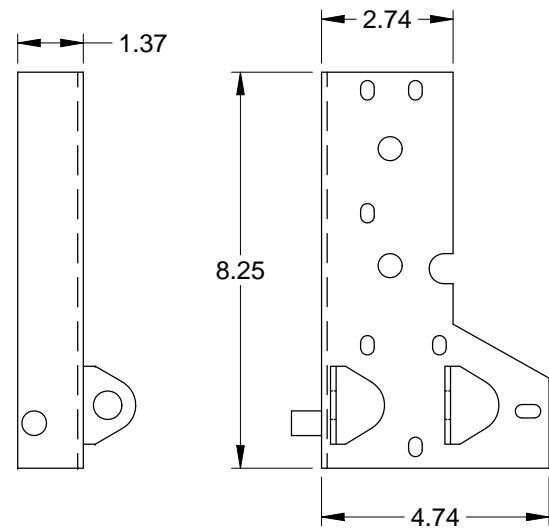
John E. Scates  
2560 King Arthur Blvd, Ste 124-54  
Lewisville, TX 75056  
FL PE #51737  
TX PE #56308-12203

Scale: None
Drawn by: R. Frey
Checked by: G. Wedekind
Date: 01/08/19
ECO: 7679.01

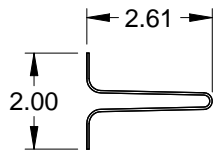


1101 East River Road  
Dixon, IL 61021

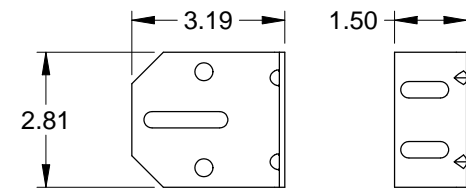
Title: Spec, Wind Load AlumaView - AV200, StyleView - CPF, WPF		
No. P-2809	Sheet 2	Rev B



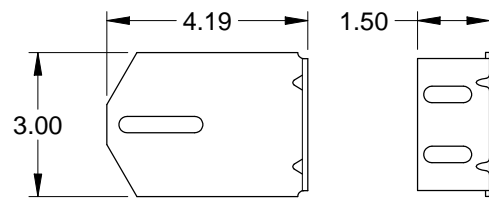
Corner Bracket  
(For doors over 600 lbs.)  
.116 Galv. Steel



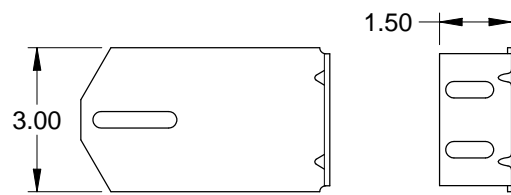
Steel U-bar  
18 Ga. (.049 min.) Galvanized  
High Tensil Steel  
80 KSI Minimum Yield



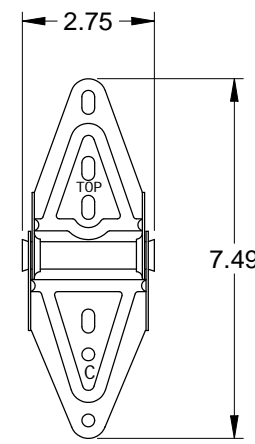
3" Track Bracket  
.116 Galv. Steel



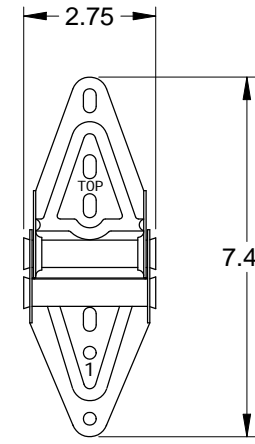
4" Track Bracket  
.116 Galv. Steel



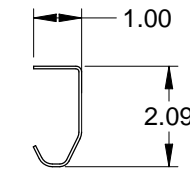
5" Track Bracket  
.116 Galv. Steel



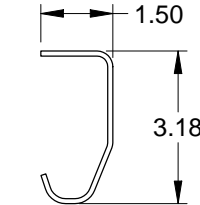
Center Hinge  
.045 Galv. Steel



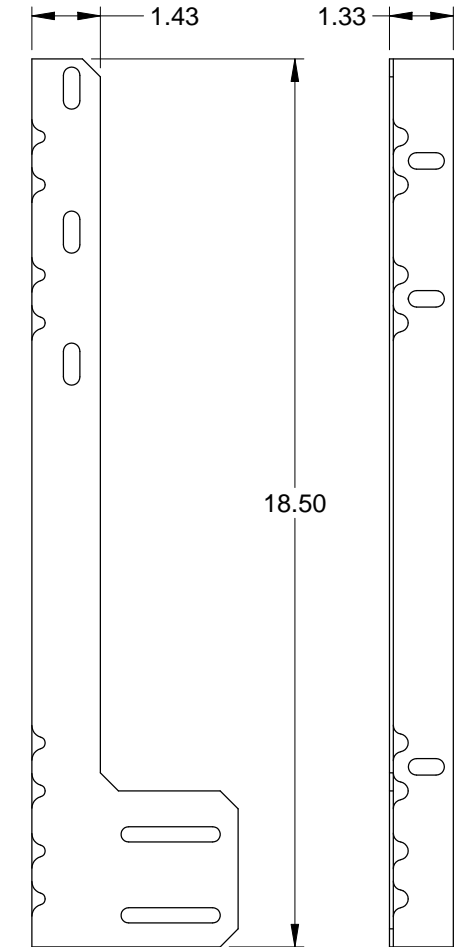
Edge Hinge  
.086 Galv. Steel



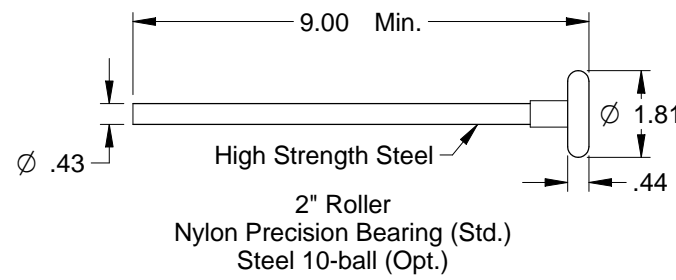
2" Track  
.086 Galv. Steel



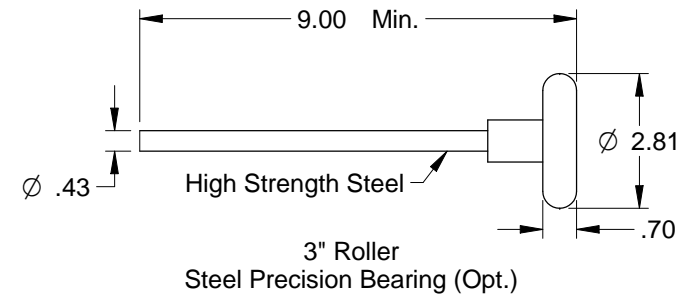
3" Track (Optional)  
.105 Galv. Steel



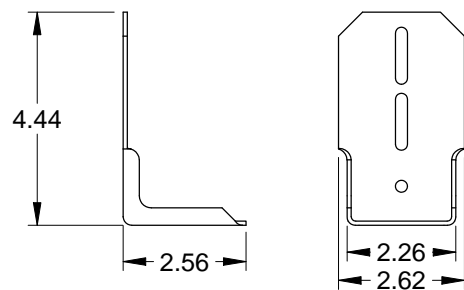
Jamb Angle  
.078 Galv. Steel



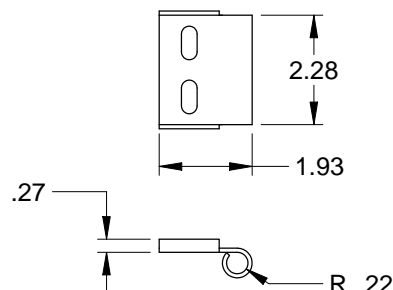
2" Roller  
Nylon Precision Bearing (Std.)  
Steel 10-ball (Opt.)



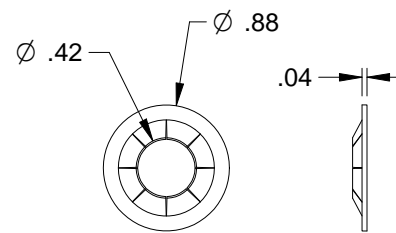
3" Roller  
Steel Precision Bearing (Opt.)



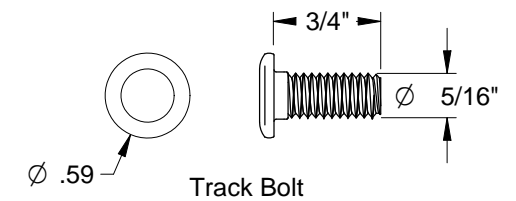
Top Fixture  
.086 Galv. Steel



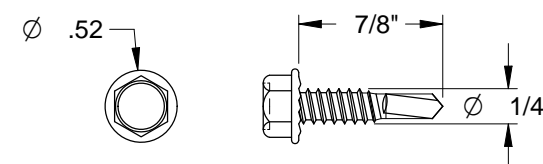
Roller Carrier  
.116 Galv. Steel  
Attached to Top Fixture  
w/(2) Track Bolts and Whiz Nuts



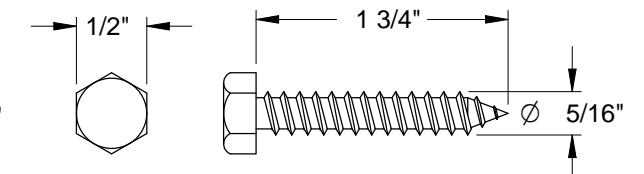
Retaining Nut



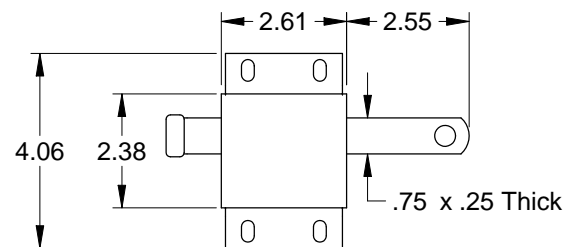
Track Bolt



Self-Drilling Screw



Hex Head Lag Screw



Slide Lock  
Case .086 Galv. Steel

Scale: None	<p>1101 East River Road Dixon, IL 61021</p>	Title: Spec, Wind Load AlumaView - AV200, StyleView - CPF, WPF	
Drawn by: R. Frey		No. P-2809	Sheet 3
Checked by: G. Wedekind			Rev B
Date: 01/08/19 ECO: 7679.01			

John E. Scates  
2560 King Arthur Blvd, Ste 124-54  
Lewisville, TX 75056  
FL PE #51737  
TX PE #56308-f2203