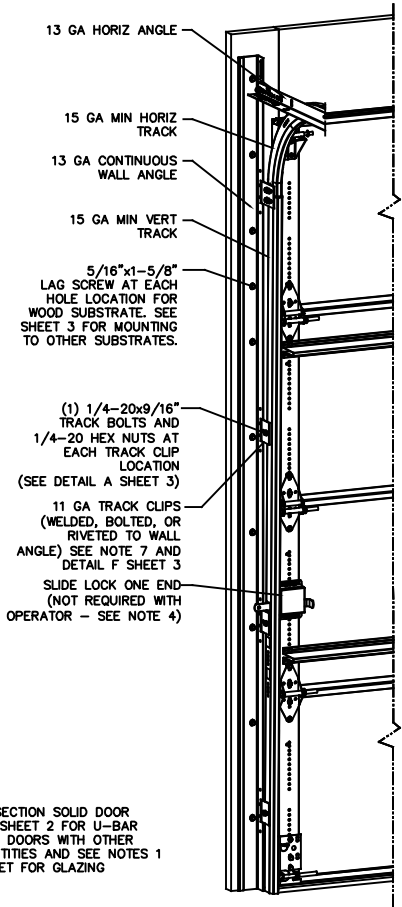


NOTES

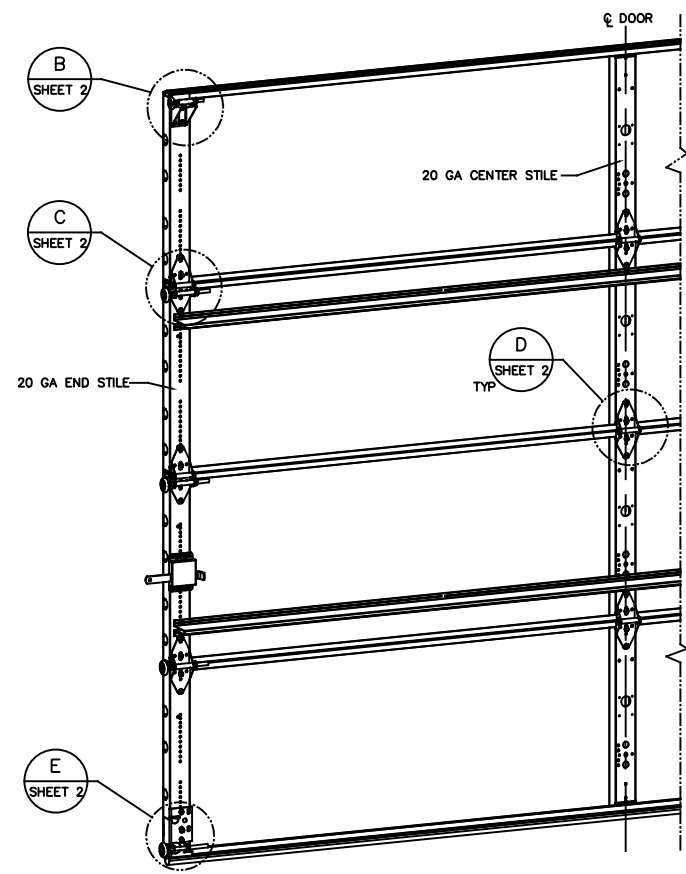
- STANDARD GLAZING OPTION - .125" MINIMUM DSB GLAZING MEETS UNIFORM STATIC DESIGN PRESSURES SHOWN ON THIS DRAWING. GLAZING SHALL HAVE A MAXIMUM HEIGHT OF 6.70" AND A MAXIMUM LENGTH OF 24.00". GLAZING IS NOT IMPACT RESISTANT AND DOES NOT MEET THE REQUIREMENTS FOR WIND-BORNE DEBRIS REGIONS.
- ALUMINUM FULL VIEW OPTION - ALUMINUM FULL VIEW SECTION MAY REPLACE ANY SECTION EXCEPT TOP AND BOTTOM PANELS. ALUMINUM FULL VIEW SECTION SHALL HAVE RAILS AND STILES OF EXTRUDED ALUMINUM ALLOY 6063-T6 WITH A 2-1/4" INTEGRAL FIN AND .125" MINIMUM DSB GLAZING INSTALLED WITH ALUMINUM RETAINERS IN ORDER TO MEET UNIFORM STATIC DESIGN PRESSURES SHOWN ON THIS DRAWING. AFV PANEL SIZE IS 57.5"x21.9" (MAX). GLAZING IS NOT IMPACT RESISTANT AND DOES NOT MEET THE REQUIREMENTS FOR WIND-BORNE DEBRIS REGIONS.
- MINIMUM OF 1" OVERLAP ON BOTH JAMBS REQUIRED TO MEET NEGATIVE DESIGN PRESSURES.
- SLIDE LOCK OR OPERATOR REQUIRED.
- SECTION STEEL TO HAVE THE FOLLOWING MINIMUM THICKNESS:
421, 423 - 20 GA
427, 429 - 24 GA
434, 436 - 25 GA
- THE DESIGN OF THE SUPPORTING STRUCTURAL ELEMENTS SHALL BE THE RESPONSIBILITY OF THE PROFESSIONAL OF RECORD FOR THE BUILDING OR STRUCTURE AND IN ACCORDANCE WITH CURRENT BUILDING CODES FOR THE LOADS LISTED ON THIS DRAWING.
- TRACK CLIPS SHALL BE LOCATED WITH CENTERLINE OF BOTTOM CLIP SPACED 10" MAX FROM BOTTOM OF TRACK AND REMAINING TRACK CLIPS SPACED AT 24" O.C. MAX. SPACING BETWEEN TOP TRACK CLIP AND SPLICE PLATE SHALL BE 30" O.C. MAX.
- WHEN MOUNTING TO WOOD, DOOR JAMB TO BE MINIMUM 2x6 STRUCTURAL GRADE LUMBER. REFER TO JAMB CONNECTION SUPPLEMENT FOR ATTACHMENT TO SUPPORTING STRUCTURE.

| REVISIONS | | | | |
|-----------|-----|----------------------|---------|----------|
| CR | REV | DESCRIPTION | DATE | APPROVAL |
| VL005 | - | INITIAL DRAWING | 1/14/21 | TLC |
| VL005 | A | ADDED AFV PANEL SIZE | 4/28/21 | TLC |

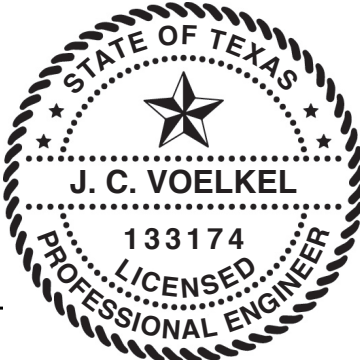


NOTE: (+) SECTION SOLID DOOR SHOWN. SEE SHEET 2 FOR U-BAR LOCATIONS ON DOORS WITH OTHER SECTION QUANTITIES AND SEE NOTES 1 & 2 THIS SHEET FOR GLAZING OPTIONS.

| SUPERIMPOSED DESIGN PRESSURE LOADS ON SUPPORTING STRUCTURE | | |
|--|-------------|----------------------------------|
| MAX DOOR WIDTH | DOOR HEIGHT | MAX UNIFORM LOAD EACH JAMB (PLF) |
| 10'-4" | ALL | +60.2/-68.5 |



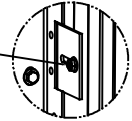
THE DOORS ARE DESIGNED AND MANUFACTURED TO COMPLY WITH THE 2018 IRC AND THE 2018 IBC.



| STATIC PRESSURE RATINGS | | APPROVED SIZES | |
|------------------------------------|--|-------------------------|--|
| DESIGN PRESSURE (PSF): +11.7/-13.3 | | MAX WIDTH: 10'-4" | |
| IMPACT/CYCLIC RATED: NO | | MAX HEIGHT: 24'-1" | |
| | | MAX SECTION HEIGHT: 24' | |

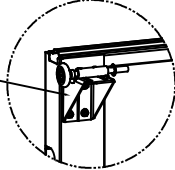
| THESE DIMENSIONS ARE IN U.S. CUSTOMARY UNITS | | | | FINISH | | MATERIAL | | DATE | | DRAWING TITLE | |
|--|---------|---------------------------|------------------------------------|-----------------|-----|--------------------------|-------------------|-------------|---------|---------------|--------------------------------|
| REF DWG | USED ON | DRIVE SHAFT DIAMETER | W/DRIVE UNLESS OTHERWISE SPECIFIED | FINISH | N/A | THE GENUINE THE ORIGINAL | LEVEDEVILLE TEXAS | DATE | 1/14/21 | DRAWING TITLE | WINDLOAD, OPTION CODE 2070 |
| | | UNDER .251 +.004/- .003 | NUMBERS: ± .25 | | | | | DRAWN BY | T CLARK | | SERIES 421/423/427/429/434/436 |
| | | .251 TO .500 +.006/- .003 | .X ± .1 | UNIT OF MEASURE | EA | N/A | | CHECKED BY | J QIAN | 1/8/21 | 11.7/-13.3 PSF, 10'-4" MAX |
| | | OVER .500 +.008/- .003 | .XX ± .03 | | | | | APPROVED BY | T CLARK | 4/28/21 | DRAWING NUMBER |
| | | FRACTIONS ± 1/16 | .XXX ± .010 | | | | | | | | D-411783 |
| | | | ANGLES: ± .5° | | | | | | | | SCALE: N/A |
| | | | | | | | | | | | SHEET 1 OF 3 |

1/4-20x9/16" TRACK BOLT AND 1/4-20 HEX NUT THROUGH THE SLOT IN THE TRACK AND TRACK CLIP



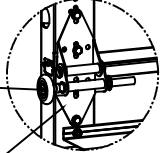
DETAIL A

12 GA COMMERCIAL TOP FRAME BRACKET WITH 13 GA ROLLER CARRIER ATTACHED WITH (4) 1/4-14x7/8" SELF DRILLING CRIMPITITE SCREWS



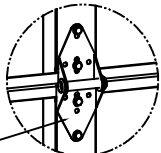
DETAIL B

2" STEEL ROLLER WITH 5-1/8" STEM AND 7/16" PUSHNUT AT EACH ROLLER LOCATION. 1/4" MAX BETWEEN PUSHNUT AND BRACKET OR HINGE



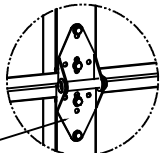
DETAIL C

14 GA WIDE BODY END HINGE TO ATTACH SECTIONS ONE AND TWO. 13 GA WIDE BODY END HINGE TO ATTACH REMAINING SECTIONS. FOR ALL, ATTACH WITH (4) 1/4-14x7/8" SELF DRILLING CRIMPITITE SCREWS



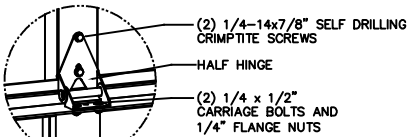
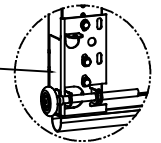
DETAIL D

14 GA WIDE BODY INTERMEDIATE HINGE ATTACHED WITH (4) 1/4-14x7/8" SELF DRILLING CRIMPITITE SCREWS



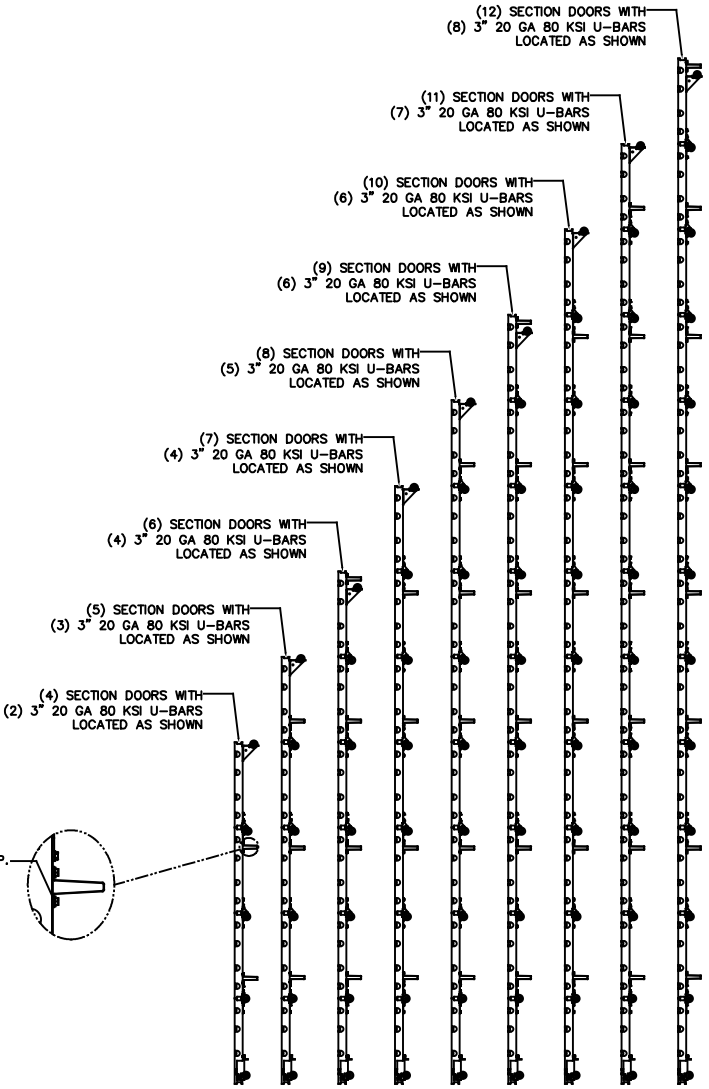
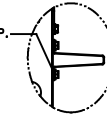
DETAIL E

12 GA BOTTOM BRACKET ATTACHED WITH (3) 1/4-14x7/8" SELF DRILLING CRIMPITITE SCREWS

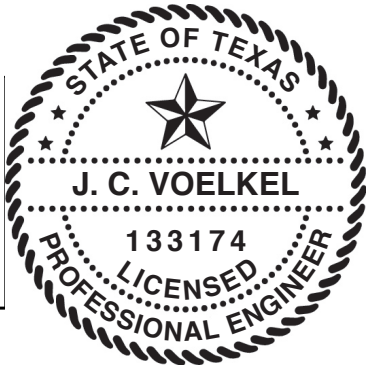


AFV SECTION

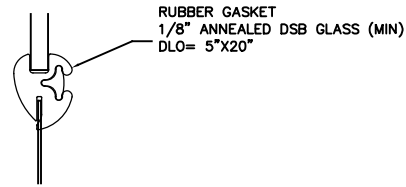
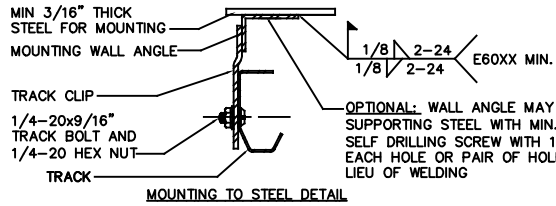
ATTACH U-BARS WITH (2) 1/4-14x7/8" SELF DRILLING CRIMPITITE SCREWS AT ALL STILE LOCATIONS, TYP.



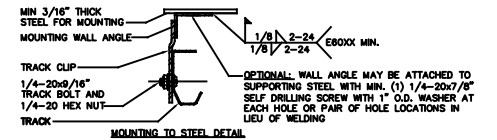
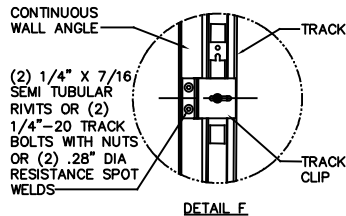
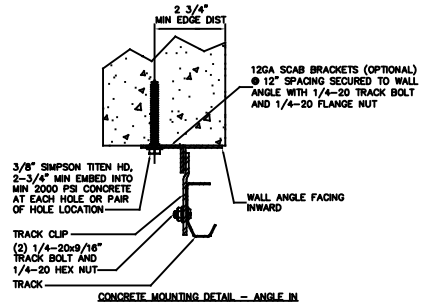
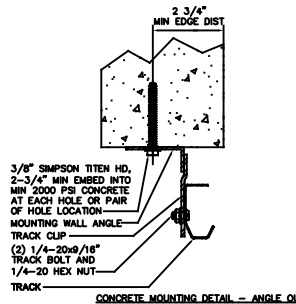
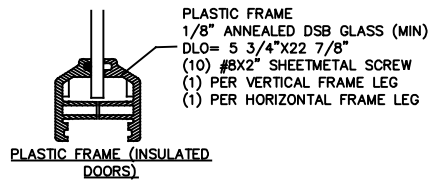
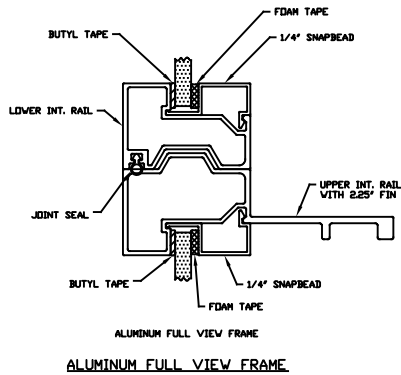
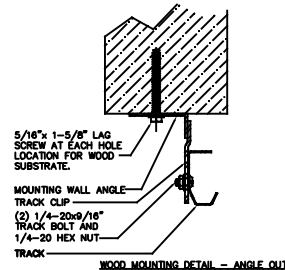
| STATIC PRESSURE RATINGS | APPROVED SIZES |
|-----------------------------------|-------------------------|
| DESIGN PRESSURE(PSF): +11.7/-13.3 | MAX WIDTH: 10'-4" |
| | MAX HEIGHT: 24'-1" |
| IMPACT/CYCLIC RATED: NO | MAX SECTION HEIGHT: 24' |



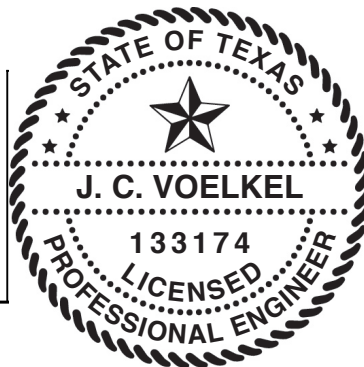
| | | | |
|--|---|--|---|
| THE DRAWINGS AND ALL OTHER INFORMATION CONTAINED HEREIN ARE THE CONFIDENTIAL AND PROPRIETARY PROPERTY OF OVERHEAD DOOR CORPORATION AND ITS AFFILIATED COMPANIES. THIS DRAWING AND INFORMATION, IN WHOLE OR IN PART, MAY NOT BE COPIED IN ANY MANNER OR DISCLOSED TO ANYONE WITHOUT THE PRIOR WRITTEN CONSENT OF OVERHEAD DOOR CORPORATION. NO DISCLOSURE OF ANY OF THIS DRAWING OR INFORMATION IS INTENDED TO OPERATE AS A LICENSE OR AUTHORIZATION TO USE IT FOR ANY PURPOSE WITHOUT THE SPECIFIC WRITTEN CONSENT OF OVERHEAD DOOR CORPORATION. | | | |
| | TOLERANCES UNLESS OTHERWISE SPECIFIED HOLE DIAMETER UNDER .251 +.004/-003 .251 TO .500 +.006/-003 OVER .500 +.008/-003 FRACTIONS ± 1/16 | WHOLE NUMBERS: ± .25 .X ± .1 .XX ± .03 .XXX ± .010 ANGLES: ± .5° | FINISH N/A LEVEVILLE, TEXAS THE GENUINE, THE ORIGINAL MATERIAL N/A |
| | REF DWG USED ON | UNIT OF MEASURE EA | DATE 4/28/21 |
| CHECKED BY T CLARK J QIAN | | DATE 1/14/21 1/8/21 | SHEET 2 OF 3 |



RUBBER FRAME GASKET (NON-INSULATED DOORS)



| STATIC PRESSURE RATINGS | APPROVED SIZES |
|-----------------------------------|-------------------------|
| DESIGN PRESSURE(PSF): +11.7/-13.3 | MAX WIDTH: 10'-4" |
| | MAX HEIGHT: 24'-1" |
| IMPACT/CYCLIC RATED: NO | MAX SECTION HEIGHT: 24' |



| THESE TRACKS AND THIS MODEL TABLE DESCRIBE THE TRACKS WHICH ARE IN U.S. CUSTOMARY UNITS | | TOLERANCES UNLESS OTHERWISE SPECIFIED | | FINISH | LEVELVILLE, TEXAS | DATE | DRAWING TITLE |
|---|---------------------------|---------------------------------------|--------|-----------------|-------------------|---------|--|
| HOLE DIAMETER | UNDER .251 +.004/- .003 | WHOLE NUMBERS | ± .25 | N/A | | 1/14/21 | WINDLOAD, OPTION CODE 2070 |
| | .251 TO .500 +.006/- .003 | FRACTIONS | ± .1 | | | | SERIES 421/423/427/429/434/436, 11.7/-13.3 PSF, 10'-4" MAX |
| | OVER .500 +.008/- .003 | ANGLES | ± .010 | UNIT OF MEASURE | | 1/8/21 | DRAWING NUMBER |
| | ± 1/16 | | ± .5° | EA | | 4/28/21 | D-411783 |
| REF DWG | USED ON | | | | | | SCALE: N/A |
| | | | | | | | SHEET 3 OF 3 |