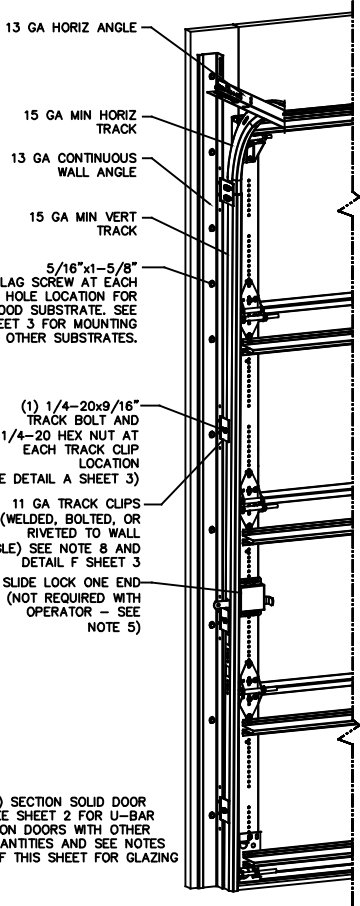


REVISIONS				
CR	REV	DESCRIPTION	DATE	APPROVAL
	VL005	- INITIAL DRAWING	1/13/2021	TLC
	VL005	A ADDED AFV PANEL SIZE	4/27/21	TLC

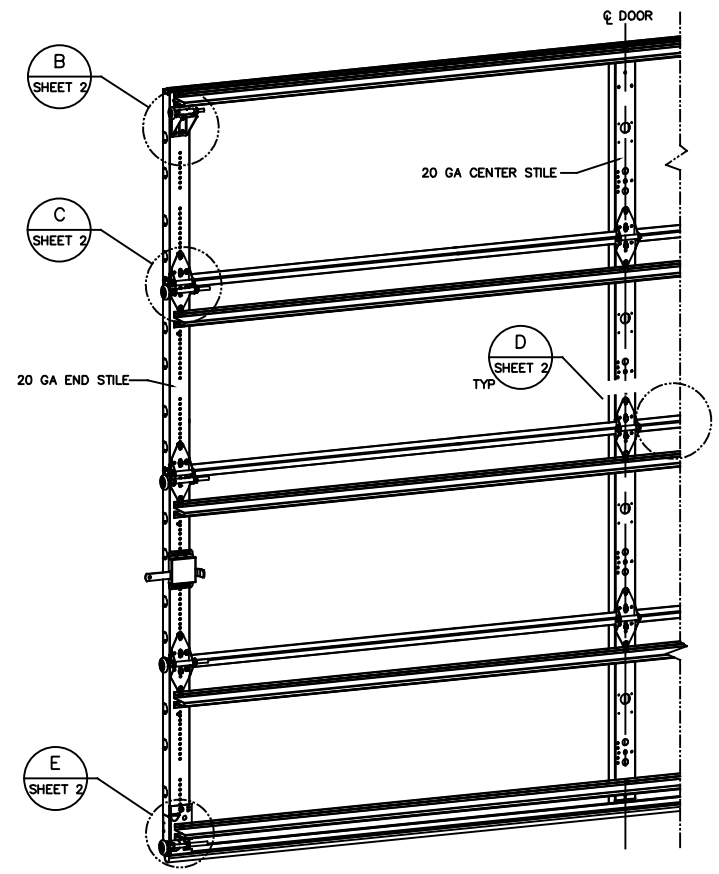
NOTES

- NON-IMPACT RESISTANT OPTION - 125" MINIMUM DSB GLAZING MEETS UNIFORM STATIC DESIGN PRESSURES SHOWN ON THIS DRAWING. GLAZING SHALL HAVE A MAXIMUM HEIGHT OF 6.70" AND A MAXIMUM LENGTH OF 24.00". GLAZING IS NOT IMPACT RESISTANT AND DOES NOT MEET THE REQUIREMENTS FOR WIND-BORNE DEBRIS REGIONS.
- IMPACT RESISTANT GLAZING OPTION - IMPACT RESISTANT GLAZING SYSTEM MAY BE INSTALLED IN INTERMEDIATE SECTIONS (WITH OR WITHOUT DECORATIVE INSERTS). GLAZING SHALL BE 1/4" POLYCARBONATE. MAXIMUM GLAZING DIMENSIONS SHALL BE 11" x 17". FASTENED WITH A MINIMUM #8 X 1" SMS; 3X ALONG THE HORIZONTAL AND 2X ALONG THE VERTICAL.
- ALUMINUM FULL VIEW OPTION - ALUMINUM FULL VIEW SECTION MAY REPLACE ANY SECTION EXCEPT TOP AND BOTTOM PANELS. ALUMINUM FULL VIEW SECTION SHALL HAVE RAILS AND STILES OF EXTRUDED ALUMINUM ALLOY 6063-T6 AND 125" MINIMUM DSB GLAZING INSTALLED WITH ALUMINUM RETAINERS IN ORDER TO MEET UNIFORM STATIC DESIGN PRESSURES SHOWN ON THIS DRAWING. AFV PANEL SIZE IS 51.5"x21.9" (MAX). GLAZING IS NOT IMPACT RESISTANT AND DOES NOT MEET THE REQUIREMENTS FOR WIND-BORNE DEBRIS REGIONS.
- MINIMUM OF 1" OVERLAP ON BOTH JAMBS REQUIRED TO MEET NEGATIVE DESIGN PRESSURES.
- SLIDE LOCK OR OPERATOR REQUIRED.
- SECTION STEEL TO HAVE THE FOLLOWING MINIMUM THICKNESS:  
421, 423 - 20 GA  
427, 429 - 24 GA  
434, 436 - 25 GA
- THE DESIGN OF THE SUPPORTING STRUCTURAL ELEMENTS SHALL BE THE RESPONSIBILITY OF THE PROFESSIONAL OF RECORD FOR THE BUILDING OR STRUCTURE AND IN ACCORDANCE WITH CURRENT BUILDING CODES FOR THE LOADS LISTED ON THIS DRAWING.
- TRACK CLIPS SHALL BE LOCATED WITH CENTERLINE OF BOTTOM CLIP SPACED 10" MAX FROM BOTTOM OF TRACK AND REMAINING TRACK CLIPS SPACED AT 24" O.C. MAX. SPACING BETWEEN TOP TRACK CLIP AND SPLICE PLATE SHALL BE 30" O.C. MAX.
- WHEN MOUNTING TO WOOD, DOOR JAMB TO BE MINIMUM 2x6 STRUCTURAL GRADE LUMBER. REFER TO JAMB CONNECTION SUPPLEMENT FOR ATTACHMENT TO SUPPORTING STRUCTURE.

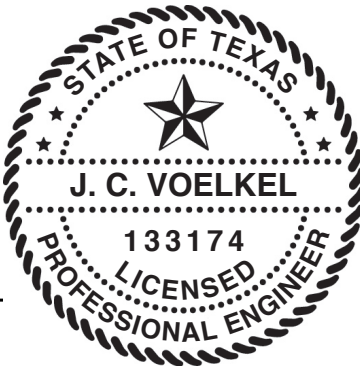


NOTE: (4) SECTION SOLID DOOR SHOWN. SEE SHEET 2 FOR U-BAR LOCATIONS ON DOORS WITH OTHER SECTION QUANTITIES AND SEE NOTES 1, 2 & 3 OF THIS SHEET FOR GLAZING OPTIONS.

SUPERIMPOSED DESIGN PRESSURE LOADS ON SUPPORTING STRUCTURE		
MAX DOOR WIDTH	DOOR HEIGHT	MAX UNIFORM LOAD EACH JAMB (PLF)
9'-4"	ALL	+132.1/-151.3



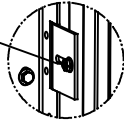
THE DOORS ARE DESIGNED AND MANUFACTURED TO COMPLY WITH THE 2018 IRC AND THE 2018 IBC.



STATIC PRESSURE RATINGS	APPROVED SIZES
DESIGN PRESSURE(PSF): +28.4/-32.2	MAX WIDTH: 9'-4" MAX HEIGHT: 24'-1"
IMPACT/CYCLIC RATED: YES	MAX SECTION HEIGHT: 24'

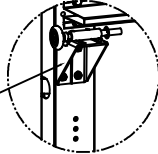
THESE THINGS AND THIS MARKING REQUIREMENT APPLY TO ALL PRODUCTS MADE BY US. CUSTOMARY UNITS.		TOLERANCES UNLESS OTHERWISE SPECIFIED		FINISH	The Genuine. The Original. LEVETTES DOOR		DATE		DRAWING TITLE	
HOLE DIAMETER	WHOLE NUMBERS: ± .25	UNDER .251 +.004/- .003	.X	N/A	LEVETTES DOOR	DATE	9/12/2020	DRAWING TITLE		LEVETTES DOOR
.251 TO .500 +.006/- .003	± .1	OVER .500 +.008/- .003	.XX	UNIT OF MEASURE	LEVETTES DOOR	DATE	1/21/21	SERIES 421/423/427/429/434/436, 438.4/-32.2 PSF, 9'-4" MAX		LEVETTES DOOR
FRACTIONS ± 1/16	.XXX ± .010		.XXX	EA	LEVETTES DOOR	DATE	4/27/21	DRAWING NUMBER		D-411780
	ANGLES: ± .5°				LEVETTES DOOR	DATE		SCALE		N/A
REF DWG	USED ON				LEVETTES DOOR	DATE		SHEET		1 OF 3

1/4-20x9/16" TRACK BOLT AND 1/4-20 HEX NUT THROUGH THE SLOT IN THE TRACK AND TRACK CLIP



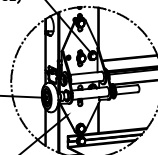
DETAIL A

12 GA COMMERCIAL TOP FRAME BRACKET WITH 13 GA ROLLER CARRIER ATTACHED WITH (4) 1/4-14x7/8" SELF DRILLING CRIMPITITE SCREWS



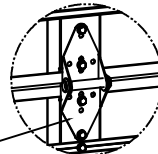
DETAIL B

ADD (2) 1/4-14x7/8" SELF DRILLING CRIMPITITE SCREWS (INSIDE OF EACH INSIDE END HINGE)



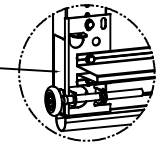
DETAIL C

2" STEEL ROLLER WITH 5-1/8" STEM AND 7/16" PUSHNUT AT EACH ROLLER LOCATION. 1/4" MAX BETWEEN PUSHNUT AND BRACKET OR HINGE



DETAIL D

14 GA WIDE BODY END HINGE TO ATTACH SECTIONS ONE AND TWO. 13 GA WIDE BODY END HINGE TO ATTACH REMAINING SECTIONS. FOR ALL, ATTACH WITH (4) 1/4-14x7/8" SELF DRILLING CRIMPITITE SCREWS

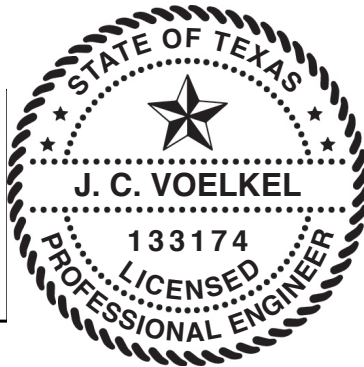


DETAIL E

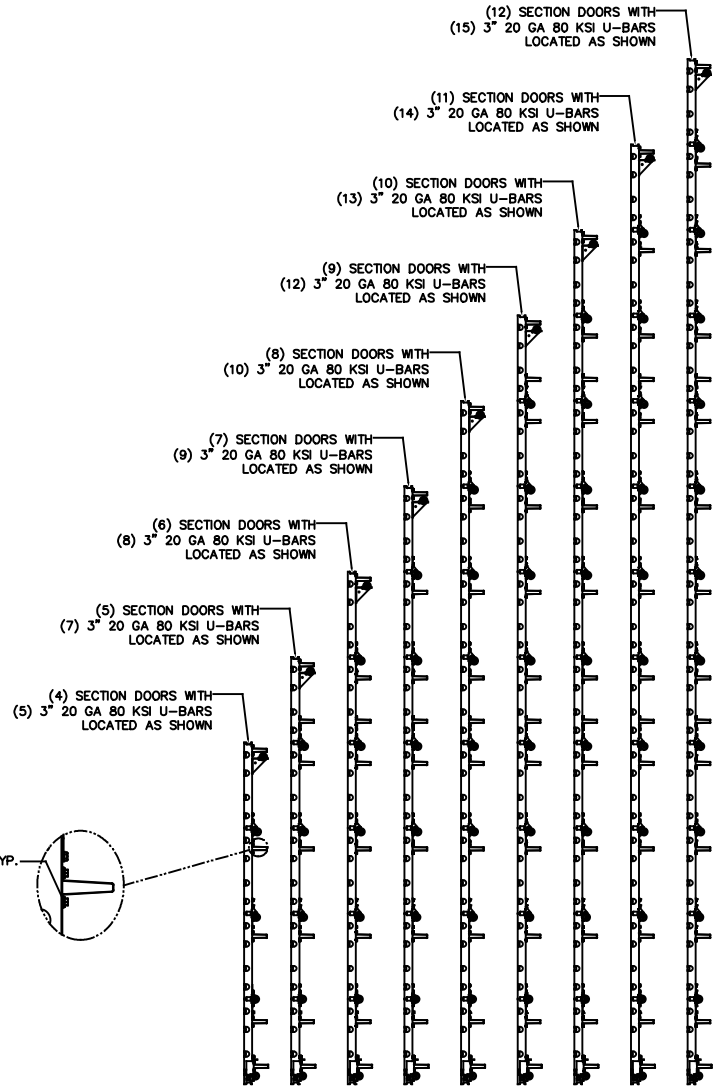
14 GA WIDE BODY INTERMEDIATE HINGE ATTACHED WITH (4) 1/4-14x7/8" SELF DRILLING CRIMPITITE SCREWS

12 GA BOTTOM BRACKET ATTACHED WITH (3) 1/4-14x7/8" SELF DRILLING CRIMPITITE SCREWS

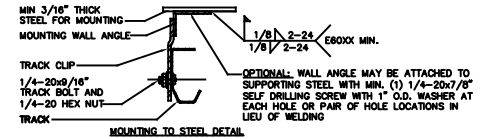
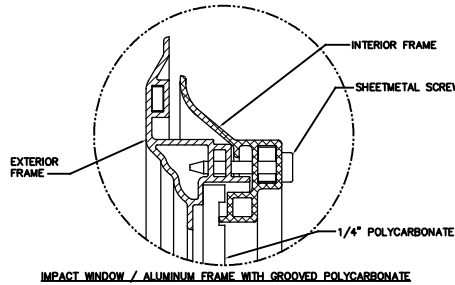
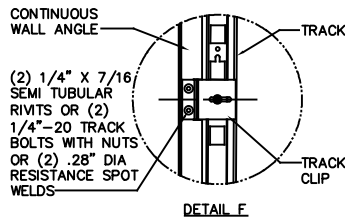
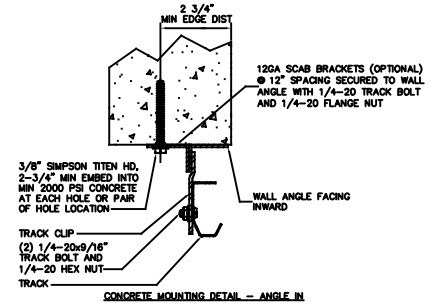
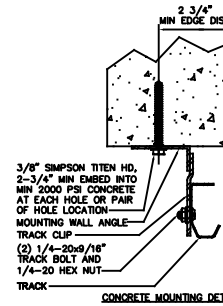
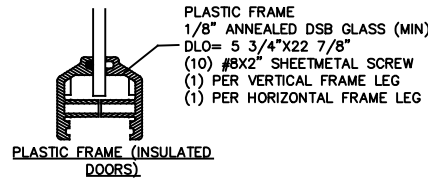
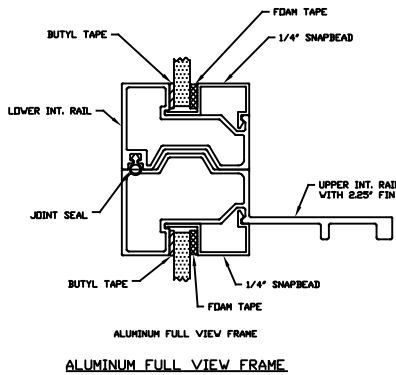
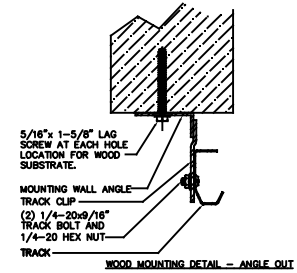
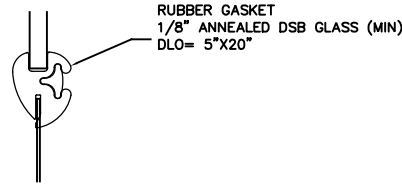
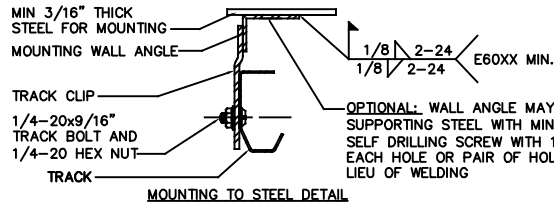
STATIC PRESSURE RATINGS	APPROVED SIZES
DESIGN PRESSURE(PSF): +28.4/-32.2	MAX WIDTH: 9'-4"
	MAX HEIGHT: 24'-1"
IMPACT/CYCLIC RATED: YES	MAX SECTION HEIGHT: 24'



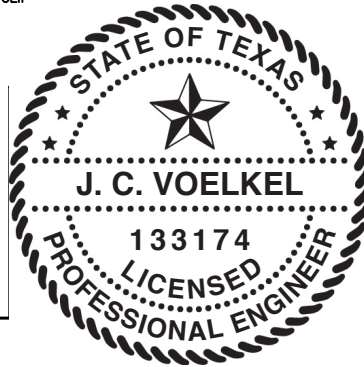
ATTACH U-BARS WITH (2) 1/4-14x7/8" SELF DRILLING CRIMPITITE SCREWS AT ALL STILE LOCATIONS, TYP.



THE DRAWINGS AND ALL OTHER INFORMATION CONTAINED HEREIN ARE THE CONFIDENTIAL AND PROPRIETARY PROPERTY OF OVERHEAD DOOR CORPORATION AND ITS AFFILIATED COMPANIES. THIS DRAWING AND INFORMATION, IN WHOLE OR IN PART, MAY NOT BE COPIED IN ANY MANNER OR DISCLOSED TO ANYONE WITHOUT THE PRIOR WRITTEN CONSENT OF OVERHEAD DOOR CORPORATION. NO DISCLOSURE OF ANY OF THIS DRAWING OR INFORMATION IS INTENDED TO OPERATE AS A LICENSE OR AUTHORIZATION TO USE IT FOR ANY PURPOSE WITHOUT THE SPECIFIC WRITTEN CONSENT OF OVERHEAD DOOR CORPORATION.			
	TOLERANCES UNLESS OTHERWISE SPECIFIED HOLE DIAMETER UNDER .251 +.004/-003 .251 TO .500 +.006/-003 OVER .500 +.008/-003 FRACTIONS ± 1/16	WHOLE NUMBERS: ± .25 .X ± .1 .XX ± .03 .XXX ± .010 ANGLES: ± .5°	FINISH N/A LEVELVILLE, TENNESSEE MATERIAL N/A
	REF DWG USED ON	DATE 4/27/21	DRAWN BY T CLARK CHECKED BY J QIAN APPROVED BY T CLARK
DRAWING TITLE WINDOW LOAD OPTION CODE 2064 SERIES 421/423/427/429/434/436, BB.4/-32.2 PSF, 9'-4" MAX			DRAWING NUMBER D- 411780
REF DWG USED ON			SHEET 2 OF 3



STATIC PRESSURE RATINGS	APPROVED SIZES
DESIGN PRESSURE(PSF): +28.4/-32.2	MAX WIDTH: 9'-4"
	MAX HEIGHT: 24'-1"
IMPACT/CYCLIC RATED: YES	MAX SECTION HEIGHT: 24'



THE DRAWINGS AND ALL OTHER INFORMATION CONTAINED HEREIN ARE THE CONFIDENTIAL AND PROPRIETARY PROPERTY OF OVERHEAD DOOR CORPORATION AND ITS AFFILIATED COMPANIES. THIS DRAWING AND INFORMATION, IN WHOLE OR IN PART, MAY NOT BE COPIED IN ANY MANNER OR DISCLOSED TO ANYONE WITHOUT THE PRIOR WRITTEN CONSENT OF OVERHEAD DOOR CORPORATION. NO DISCLOSURE OF ANY OF THIS DRAWING OR INFORMATION IS INTENDED TO OPERATE AS A LICENSE OR AUTHORIZATION TO USE IT FOR ANY PURPOSE WITHOUT THE SPECIFIC WRITTEN CONSENT OF OVERHEAD DOOR CORPORATION.		DATE: 9/12/2020		DRAWING TITLE: WINDOW OPTION CODE 2064	
FINISH: N/A		DATE: 1/21/21		SERIES: 421/423/427/429/434/436	
LIMIT OF MEASURE: EA		DATE: 4/27/21		BB.4/-32.2 PSF, 9'-4" MAX	
MATERIAL: N/A		DRAWING NUMBER: D-411780		SCALE: N/A	
REF DWG: USED ON:		DRAWN BY: T CLARK		SHEET 3 OF 3	
DATE: 1/16		CHECKED BY: J QIAN			
HOLE DIAMETER: UNDER .251 +.004/- .003		APPROVED BY: T CLARK			
WHOLE NUMBERS: ± .25					
FRACTIONS: ± .010					
ANGLES: ± .5°					