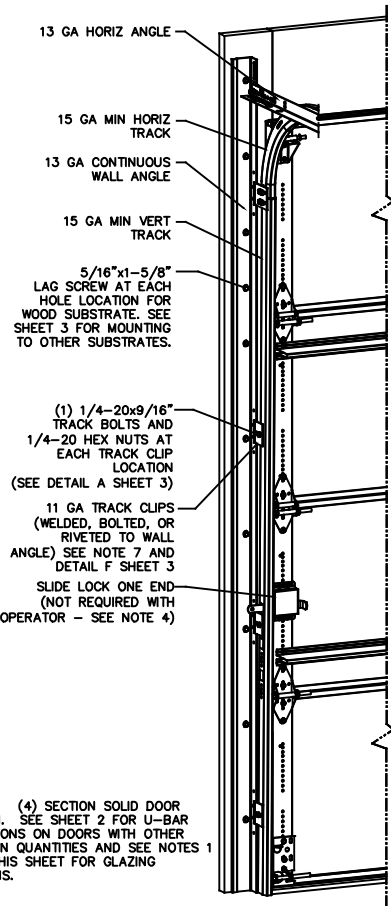


NOTES

- NOTES:**
- STANDARD GLAZING OPTION - .125" MINIMUM DSB GLAZING MEETS UNIFORM STATIC DESIGN PRESSURES SHOWN ON THIS DRAWING. GLAZING SHALL HAVE A MAXIMUM HEIGHT OF 6.70" AND A MAXIMUM LENGTH OF 24.00". GLAZING IS NOT IMPACT RESISTANT AND DOES NOT MEET THE REQUIREMENTS FOR WIND-BORNE DEBRIS REGIONS.
 - ALUMINUM FULL VIEW OPTION - ALUMINUM FULL VIEW SECTION MAY REPLACE ANY SECTION EXCEPT TOP AND BOTTOM PANELS. ALUMINUM FULL VIEW SECTION SHALL HAVE RAILS AND STILES OF EXTRUDED ALUMINUM ALLOY 6063-T6 AND .125" MINIMUM DSB GLAZING INSTALLED WITH ALUMINUM RETAINERS IN ORDER TO MEET UNIFORM STATIC DESIGN PRESSURES SHOWN ON THIS DRAWING. AFV PANEL SIZE IS 51.5"x21.9" (MAX). GLAZING IS NOT IMPACT RESISTANT AND DOES NOT MEET THE REQUIREMENTS FOR WIND-BORNE DEBRIS REGIONS.
 - MINIMUM OF 1" OVERLAP ON BOTH JAMBS REQUIRED TO MEET NEGATIVE DESIGN PRESSURES.
 - SLIDE LOCK OR OPERATOR REQUIRED.
 - SECTION STEEL TO HAVE THE FOLLOWING MINIMUM THICKNESS:
421, 423 - 20 GA
427, 429 - 24 GA
434, 436 - 25 GA
 - THE DESIGN OF THE SUPPORTING STRUCTURAL ELEMENTS SHALL BE THE RESPONSIBILITY OF THE PROFESSIONAL OF RECORD FOR THE BUILDING OR STRUCTURE AND IN ACCORDANCE WITH CURRENT BUILDING CODES FOR THE LOADS LISTED ON THIS DRAWING.
 - TRACK CLIPS SHALL BE LOCATED WITH CENTERLINE OF BOTTOM CLIP SPACED 10" MAX FROM BOTTOM OF TRACK AND REMAINING TRACK CLIPS SPACED AT 24" O.C. MAX. SPACING BETWEEN TOP TRACK CLIP AND SPLICE PLATE SHALL BE 30" O.C. MAX.
 - WHEN MOUNTING TO WOOD, DOOR JAMB TO BE MINIMUM 2x6 STRUCTURAL GRADE LUMBER. REFER TO JAMB CONNECTION SUPPLEMENT FOR ATTACHMENT TO SUPPORTING STRUCTURE.

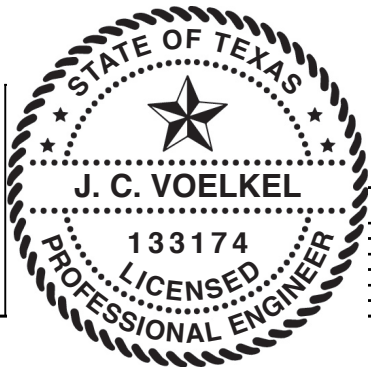


NOTE: (4) SECTION SOLID DOOR SHOWN. SEE SHEET 2 FOR U-BAR LOCATIONS ON DOORS WITH OTHER SECTION QUANTITIES AND SEE NOTES 1 & 2 THIS SHEET FOR GLAZING OPTIONS.

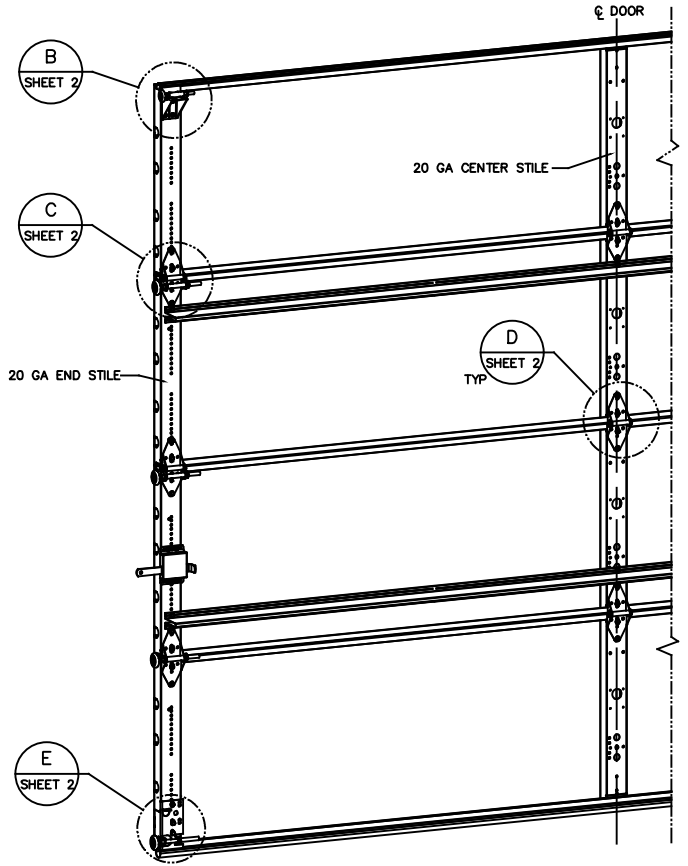
SUPERIMPOSED DESIGN PRESSURE LOADS ON SUPPORTING STRUCTURE

MAX DOOR WIDTH	DOOR HEIGHT	MAX UNIFORM LOAD EACH JAMB (PLF)
9'-4"	ALL	+73.9/-84.6

STATIC PRESSURE RATINGS	APPROVED SIZES
DESIGN PRESSURE(PSF): +15.9/-18.2	MAX WIDTH: 9'-4"
	MAX HEIGHT: 24'-1"
IMPACT/CYCLIC RATED: NO	MAX SECTION HEIGHT: 24'



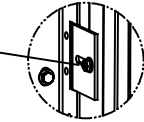
REVISIONS				
OR	REV	DESCRIPTION	DATE	APPROVAL
	VL005	- INITIAL DRAWING	1/13/2021	TLC
	VL005	A ADDED AFV PANEL SIZE	4/27/21	TLC



THE DOORS ARE DESIGNED AND MANUFACTURED TO COMPLY WITH THE 2018 IRC AND THE 2018 IBC.

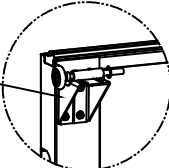
THE DRAWINGS AND ALL OTHER INFORMATION CONTAINED HEREIN ARE THE CONFIDENTIAL AND PROPRIETARY PROPERTY OF OVERHEAD DOOR CORPORATION AND ITS AFFILIATED COMPANIES. THIS DRAWING AND INFORMATION, IN WHOLE OR IN PART, MAY NOT BE COPIED IN ANY MANNER OR DISCLOSED TO ANYONE WITHOUT THE PRIOR WRITTEN CONSENT OF OVERHEAD DOOR CORPORATION. NO DISCLOSURE OF ANY OF THIS DRAWING OR INFORMATION IS INTENDED TO OPERATE AS A LICENSE OR AUTHORIZATION TO USE IT FOR ANY PURPOSE WITHOUT THE SPECIFIC WRITTEN CONSENT OF OVERHEAD DOOR CORPORATION.										
REF DWG	USED ON	TOLERANCES UNLESS OTHERWISE SPECIFIED			FINISH N/A	UNIT OF MEASURE EA	MATERIAL N/A	DATE 9/12/2020	DRAWN BY T CLARK	DRAWING TITLE VINYL DOOR OPTION CODE 2061 SERIES 421/423/427/429/434/436, 15.9/-18.2 PSF, 9'-4" MAX
		HOLE DIAMETER UNDER .251 +.004/- .003 .251 TO .500 +.006/- .003 OVER .500 +.008/- .003	WHOLE NUMBERS X ± .1 XX ± .03 XXX ± .010	FRACTIONS ± 1/16						
								APPROVED BY T CLARK	DATE 4/27/21	ISSUE NUMBER D-411777
										SCALE: N/A SHEET 1 OF 3

1/4-20x9/16" TRACK BOLT AND 1/4-20 HEX NUT THROUGH THE SLOT IN THE TRACK AND TRACK CLIP



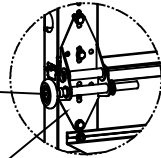
DETAIL A

12 GA COMMERCIAL TOP FRAME BRACKET WITH 13 GA ROLLER CARRIER ATTACHED WITH (4) 1/4-14x7/8" SELF DRILLING CRIMPITTE SCREWS



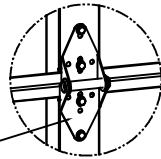
DETAIL B

2" STEEL ROLLER WITH 5-1/8" STEM AND 7/16" PUSHNUT AT EACH ROLLER LOCATION. 1/4" MAX BETWEEN PUSHNUT AND BRACKET OR HINGE



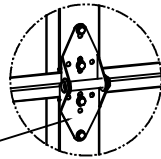
DETAIL C

14 GA WIDE BODY END HINGE TO ATTACH SECTIONS ONE AND TWO. 13 GA WIDE BODY END HINGE TO ATTACH REMAINING SECTIONS. FOR ALL, ATTACH WITH (4) 1/4-14x7/8" SELF DRILLING CRIMPITTE SCREWS



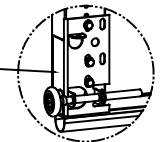
DETAIL D

14 GA WIDE BODY INTERMEDIATE HINGE ATTACHED WITH (4) 1/4-14x7/8" SELF DRILLING CRIMPITTE SCREWS

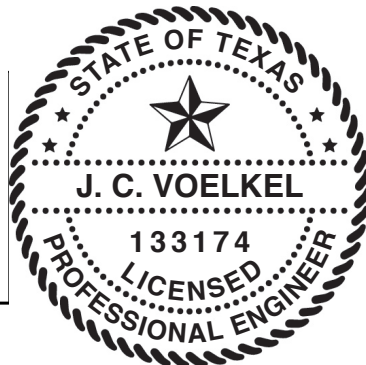


DETAIL E

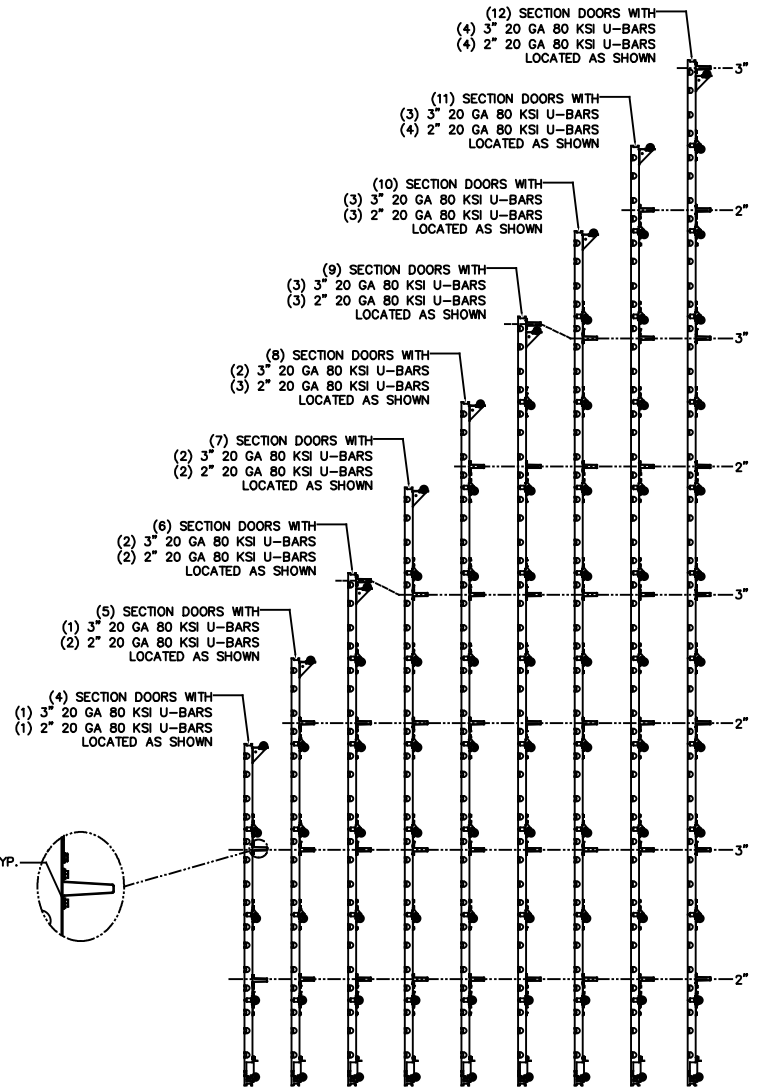
12 GA BOTTOM BRACKET ATTACHED WITH (3) 1/4-14x7/8" SELF DRILLING CRIMPITTE SCREWS



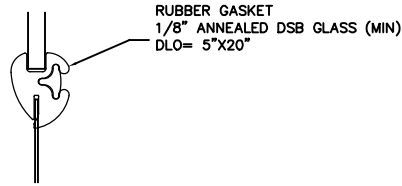
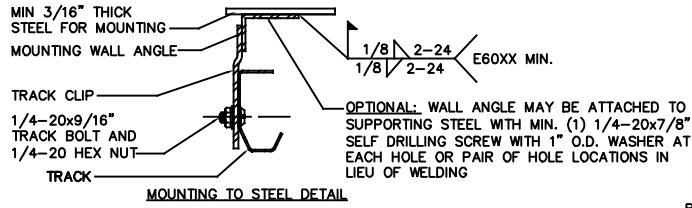
STATIC PRESSURE RATINGS	APPROVED SIZES
DESIGN PRESSURE(PSF): +15.9/-18.2	MAX WIDTH: 9'-4"
	MAX HEIGHT: 24'-1"
IMPACT/CYCLIC RATED: NO	MAX SECTION HEIGHT: 24'



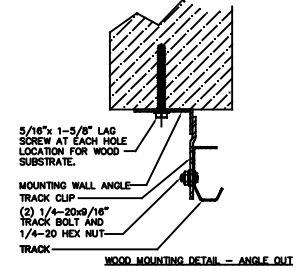
ATTACH U-BARS WITH (2) 1/4-14x7/8" SELF DRILLING CRIMPITTE SCREWS AT ALL STILE LOCATIONS, TYP.



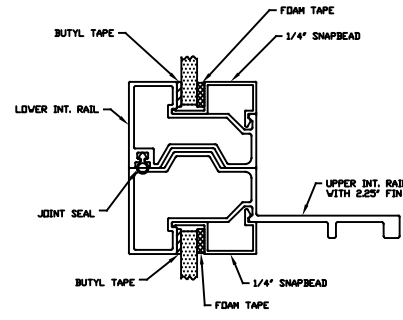
THE DRAWINGS AND ALL OTHER INFORMATION CONTAINED HEREIN ARE THE CONFIDENTIAL AND PROPRIETARY PROPERTY OF OVERHEAD DOOR CORPORATION AND ITS AFFILIATED COMPANIES. THIS DRAWING AND INFORMATION, IN WHOLE OR IN PART, MAY NOT BE COPIED IN ANY MANNER OR DISCLOSED TO ANYONE WITHOUT THE PRIOR WRITTEN CONSENT OF OVERHEAD DOOR CORPORATION. NO DISCLOSURE OF ANY OF THIS DRAWING OR INFORMATION IS INTENDED TO OPERATE AS A LICENSE OR AUTHORIZATION TO USE IT FOR ANY PURPOSE WITHOUT THE SPECIFIC WRITTEN CONSENT OF OVERHEAD DOOR CORPORATION.										
REF DWG	USED ON	HOLE DIAMETER			FINISH	MATERIAL	LEVEWILLE, TEXAS	DATE	DRAWING TITLE	
		UNDER .251 +.004/- .003	WHOLE NUMBERS: ± .25	N/A					VINDL/DAD/OPTION CODE 2061	
		.251 TO .500 +.006/- .003	X ± .1				9/12/2020	SERIES 421/423/427/429/434/436, 15.9/-18.2 PSF, 9'-4" MAX		
		OVER .500 +.008/- .003	XX ± .03	UNIT OF MEASURE			1/21/21	DRAWING NUMBER D-411777		
		FRACTIONS ± 1/16	XXX ± .010				4/27/21	SOLD: N/A SHEET 2 OF 3		
		± 1/16	ANGLES: ± .5°							



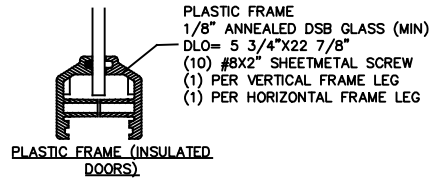
RUBBER FRAME GASKET (NON-INSULATED DOORS)



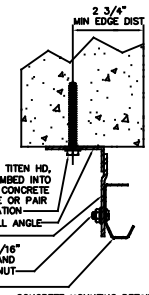
WOOD MOUNTING DETAIL - ANGLE CUT



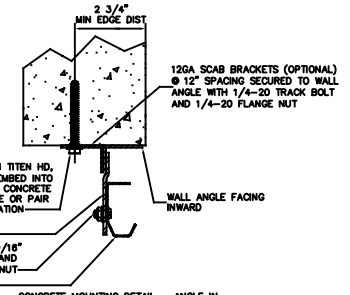
ALUMINUM FULL VIEW FRAME



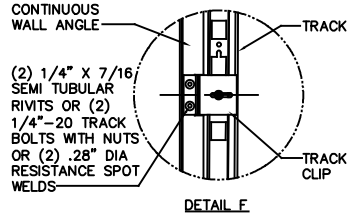
PLASTIC FRAME (INSULATED DOORS)



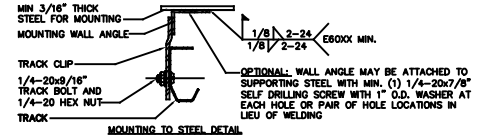
CONCRETE MOUNTING DETAIL - ANGLE CUT



CONCRETE MOUNTING DETAIL - ANGLE IN

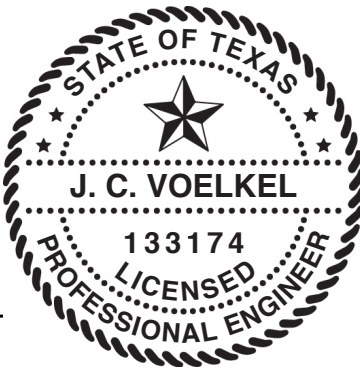


DETAIL F



MOUNTING TO STEEL DETAIL

STATIC PRESSURE RATINGS	APPROVED SIZES
DESIGN PRESSURE(PSF): +15.9/-18.2	MAX WIDTH: 9'-4"
	MAX HEIGHT: 24'-1"
IMPACT/CYCLIC RATED: NO	MAX SECTION HEIGHT: 24'



THE DRAWINGS AND ALL OTHER INFORMATION CONTAINED HEREIN ARE THE CONFIDENTIAL AND PROPRIETARY PROPERTY OF OVERHEAD DOOR CORPORATION AND ITS AFFILIATED COMPANIES. THIS DRAWING AND INFORMATION, IN WHOLE OR IN PART, MAY NOT BE COPIED IN ANY MANNER OR DISCLOSED TO ANYONE WITHOUT THE PRIOR WRITTEN CONSENT OF OVERHEAD DOOR CORPORATION. NO DISCLOSURE OF ANY OF THIS DRAWING OR INFORMATION IS INTENDED TO OPERATE AS A LICENSE OR AUTHORIZATION TO USE IT FOR ANY PURPOSE WITHOUT THE SPECIFIC WRITTEN CONSENT OF OVERHEAD DOOR CORPORATION.			
	TITLE: TELEVISION DATE: 9/12/2020	FINISH: N/A UNIT OF MEASURE: EA	DRAWING TITLE: VINDL/DAD/OPTION CODE 2061 SERIES: 421/423/427/429/434/436, 15.9/-18.2 PSF, 9'-4' MAX DRAWING NUMBER: D-411777 SCALE: N/A SHEET 3 OF 3
	DRG NO: REF DWG USED ON: 4	DIMENSIONS UNLESS OTHERWISE SPECIFIED: DIMENSIONS: UNDER .251 +.004/- .003 DIMENSIONS: .251 TO .500 +.006/- .003 DIMENSIONS: OVER .500 +.008/- .003 FRACTIONS: ± 1/16	WHOLE NUMBERS: ± .25 DECIMALS: ± .1 ANGLES: ± .5°